



Musgrove

**PETROLEUM
CORPORATION**
GREAT BEND, KANSAS

COMPANY: Pauley Oil

LEASE: FSI # 6

FIELD: Brock

LOCATION: SE-NW-SW-NW (1851' FNL & 455' FWL)

SEC: 7 TWSP: 23s RGE: 11w

COUNTY: Stafford STATE: Kansas

KB: 1834 GL: 1827

API # 15-185-23803-00-00

CONTRACTOR: Southwind Drilling Company (Rig # 4)

Spud: 04-17-2013 Comp: 04-23-2013

RTD: 4000 LTD: 3993

Mud Up: 2400 Type Mud: Chemical was displaced

Samples Saved From: 2900' to RTD

Drilling Time Kept From: 2900' to RTD

Samples Examined From: 2900' to RTD

Geological Supervision From: 3000' to RTD

Geologist on Well: Josh Austin

Surface Casing: 8 5/8" @ 564'

Production Casing: 5 1/2" Set and Cemented

Electronic Surveys: By Pioneer Energy Services CNL/CDL, MEL, DIL

NOTES

On the basis of the structural position, reviewing the electric logs and sample shows it was recommended by all parties involved in the FSI #6 to set 3 1/2" production casing to further test the Arbuckle and Lansing zones with intentions of making a shallow disposal well if the zones are non-productive.

Pauley Oil well comparison sheet

WELLING WELL FSD #3 SE 1/4 26-23e-12w					COMPARISON WELL FSD #4 SE 1/4 8-23e-12w				COMPARISON WELL FSD #5 SE 1/4 17-23e-12w			
1834 KB					1825 KB		Structural Relationship		1835 KB		Structural Relationship	
Formation	Sample	Sub-Sea	Log	Sub-Sea	Log	Sub-Sea	Sample	Log	Log	Sub-Sea	Sample	Log
Hochner	3141	-1307	3136	-1302	3126	-1301	-6	-1	3128	-1293	-14	-9
Toronto	3160	-1326	3152	-1318	3144	-1319	-7	1	3146	-1311	-15	-7
Douglas	3178	-1344	3168	-1334					3162	-1327	-17	-7
Brown Lime	3283	-1449	3276	-1442					3270	-1435	-14	-7
Lansing	3307	-1473	3300	-1466	3295	-1470	-3	4	3296	-1461	-12	-5
Base KC	3566	-1732	3553	-1719	3545	-1720	-12	1				
Viola	3595	-1761	3584	-1750	3582	-1757	-4	7	3592	-1757	-4	7
Simpson Shale	3639	-1805	3632	-1798	3610	-1785	-20	-13	3624	-1789	-16	-9
Arbuckle	3692	-1858	3684	-1850	3664	-1839	-19	-11	3676	-1841	-17	-9
Total Depth	4000	-2166	3993	-2159	3852	-2027			3800	-1965		

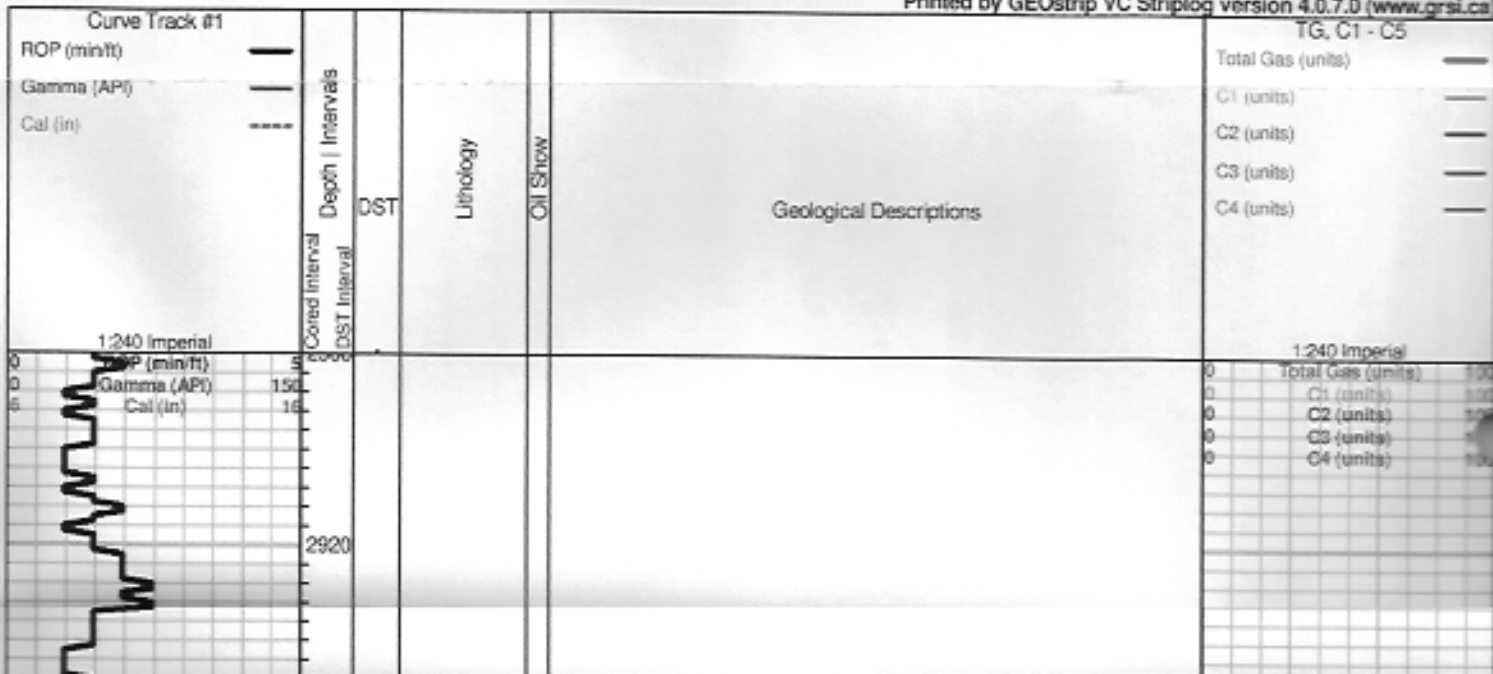
ROCK TYPES

Cht	Dolsec	shale, gn	Carbon Sh
Cong	Lmst fw/7>	shale, gry	Ss

OTHER SYMBOLS

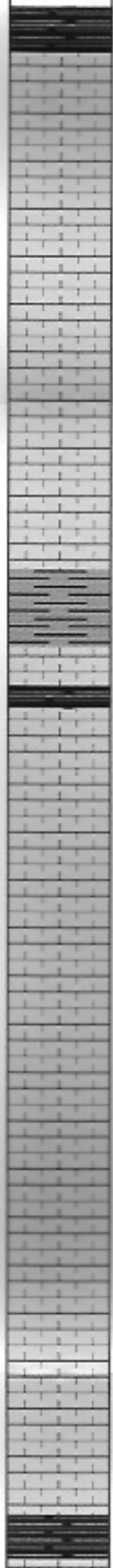
- DST
- DST Int
 - DST alt
 - Core
 - tail pipe

Printed by GEOstrip VC Striplog version 4.0.7.0 (www.grsi.ca)



2940
2960
2980
3000
3020
3040
3060
3080
3100
3120
3140

ROP (min/ft) 5
Gamma (API) 150
CST (in) 16



black carboniferous shale

Limestone; cream-lt. grey, fine-medium xln, fossiliferous in part, granular, chalky, no shows

Limestone; as above

grey-black shale

trace black carboniferous shale

Limestone; cream-lt. grey-buff, highly oolitic/foossiliferous, granular in part, fair-good fossil cast-oolicastic type porosity, no shows

Limestone as above

Limestone; tan-cream-buff, highly fossiliferous, dense in part, poorly developed porosity, plus white chalk

Limestone; tan-cream, fine xln, dense, slightly fossiliferous poor visible porosity, no shows

Limestone; as above, trace Chert, grey, boney

HEEBNER 3141 (-1307)

black carboniferous shale

0	Total Gas (units)	100
0	C1 (units)	100
0	C2 (units)	100
0	C3 (units)	100
0	C4 (units)	100

black carboniferous shale

plus grey-green shale

TORONTO 3160 (-1326)

Limestone; cream-tan, fossiliferous in part, chalky, few pin point type porosity, no shows

DOUGLAS 3178 (-1344)

Shale; grey-greyish green-maroon, micaceous in part, few silty pieces

Shale; grey-greyish green, micaceous in part, few silty pieces

Shale as above

Shale; grey-dark grey, micaceous, silty

as above

BROWN LIME 3283 (-1449)

Limestone; buff-tan, fine xln, dense, slightly fossiliferous, cherty in part

grey-dark grey Shale

LANSING 3307 (-1473)

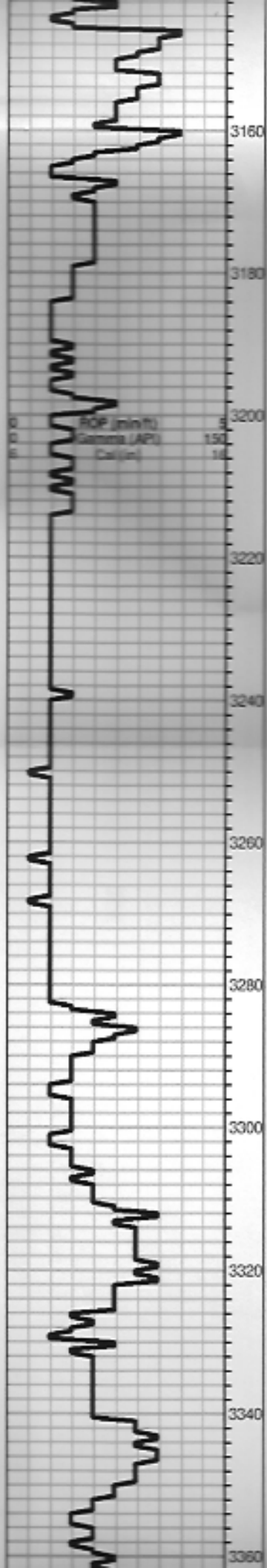
Limestone; grey-cream, fine xln, chalky in part, dense, inter xln-vuggy porosity, trace golden brown-grey stain, lt. SFO, faint-fair odor

Limestone; white-cream, highly oolitic, chalky in part, poor-no visible porosity, no shows

Chert; oolitic boney

grey-dark grey Shale

Limestone; cream-buff, highly oolitic in part, poorly developed porosity, trace black stain



0	Total Gas (units)	100
0	C1 (units)	100
0	C2 (units)	100
0	C3 (units)	100
0	C4 (units)	100

Limestone; cream-buff, highly oolitic in part, poorly developed porosity, trace black stain, NSFO, faint odor

Limestone as above

grey-maroon-green shale

Limestone; cream-grey, fine xln, chalky, dense, slighty fossiliferous, plus white chalk, no shows

Limestone; as above

Limestone; tan-buff-grey, fine-medium xln, oolitic in part, dense, no shows

Limestone; as above plus grey, oolitic Chert

Limestone; cream-lt. grey, sub oomoldic, chalky, fair-good oomoldic porosity, (barren)

grey-maroon-green shale

Limestone; cream-lt. grey, fine xln, dense, boney, chalky in part, poor visible porosity, no shows

plus grey boney Chert

Limestone; white, fine xln, chalky, black "dead oil" staining, NSFO, no odor

grey-dark grey Shale

Limestone; cream-buff, fine xln, chalky in part, few scattered porosity, questionable trace brown stain, NSFO, no odor

Limestone; as above no shows

black carboniferous shale

Limestone; cream, fine xln, oolitic, fair porosity, brown stain, SFO, fair odor

BASE KANSAS CITY 3566 (-1732)

0	Total Gas (units)	100
0	C1 (units)	100
0	C2 (units)	100
0	C3 (units)	1
0	C4 (units)	1

CONGLOMERATE

Limestone; cream-grey, fine xln, dense, chalky, plus variety colors of shale

VIOLA 3595 (-1761)

Chert; cream-grey-buff, semi tripolitic, weathered in part, good vuggy type porosity, brown stain, SFO, good "gassy" odor

Chert as above

Chert; white-cream, boney, black edge staining, trace free oil, fair odor

SIMPSON SHALE 3639 (-1805)

Shale; grey-green, soft, waxey in part

Sand; greyish green, very fine grained, sub angular, sub rounded, friable, dolomitic in part, trace brown stain, questionable SFO, faint odor

Shale; grey-greyish green, soft, silty

ARBUCKLE 3692 (-1858)

Dolomite; cream-lt. grey, fine-medium xln, sucrosic in part, dense, few scattered inter xln-vuggy porosity, brown-grey stain, SFO/SAT, good-strong odor

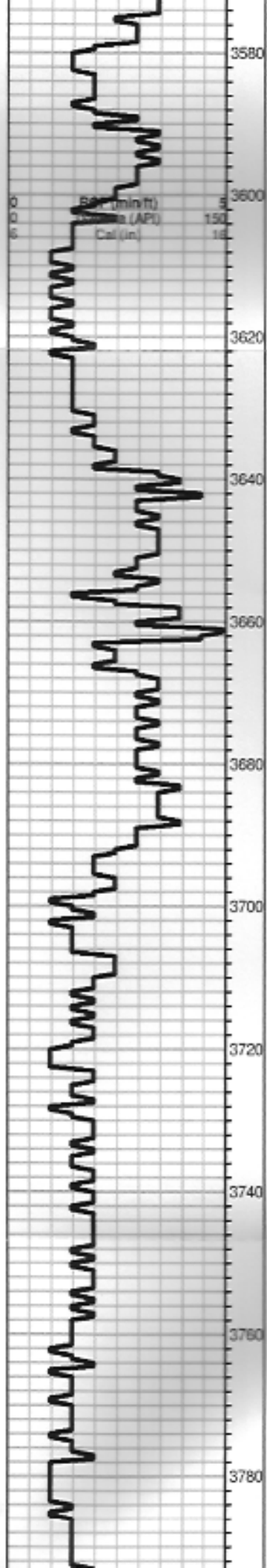
Dolomite; cream-buff, fine-medium xln, sucrosic, scattered inter xln porosity, brown-dark brown stain, SFO/SAT, good odor

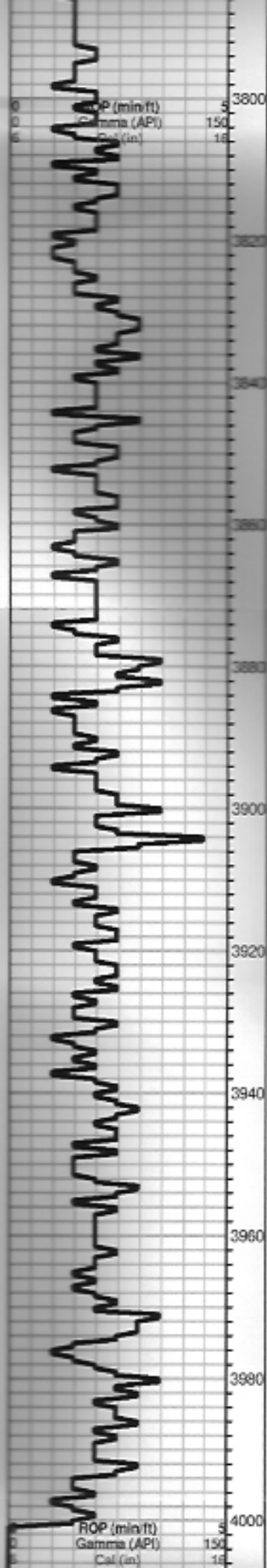
Dolomite; cream, fine-medium xln, sucrosic in part, dense, few inter xln-vuggy porosity, black-grey stain, SFO/SAT in part, fair-good odor
plus white boney Chert

Dolomite; cream-tan-buff, fine xln, sucrosic in part, few inter xln porosity, black stain, trace free oil, fair-good odor, plus boney white-cream, Chert

Dolomite as above

Total Gas (units)	100
C1 (units)	100
C2 (units)	100
C3 (units)	100
C4 (units)	100





Dolomite; cream-pink-buff, fine xln, sucrosic in part, poorly developed porosity, trace black stain, NSFO, faint-fair odor, plus boney white, Chert

Total Gas (units)	100
C1 (units)	100
C2 (units)	100
C3 (units)	100
C4 (units)	100

Dolomite; cream-pink, fine-medium xln, dense, poorly developed porosity, no shows, very faint odor, Chert as above

Dolomite; lt. grey-buff, fine xln, slightly sucrosic, dense, fair inter xln porosity, no shows, plus white-lt grey Chert

Dolomite; cream-lt. grey-tan, fine-medium xln, dense, fair inter xln porosity, no shows, Chert as above

Dolomite; lt. grey-buff, fine xln, slightly sucrosic, dense, scattered inter xln-finely vuggy type porosity, no shows, trace white-grey, boney Chert

Dolomite; buff, fine xln, dense, poor porosity, no shows

Dolomite as above

Dolomite; tan-cream, fine xln, dense, few scattered inter xln porosity, no shows, plus Chert; tan-cream-white, boney

As above

Dolomite; buff-cream-grey, fine xln, dense, inter xln porosity, no shows, Chert; cream-white, boney

Rotary Total Depth 4000 (-2166)

Total Gas (units)	100
C1 (units)	100
C2 (units)	100