



Musgrove

**PETROLEUM
CORPORATION**
Clafin, Kansas

Geologist's Report

Company: Pauley Oil

Lease: FSI #5

Field: Brock

Location: SE-SE-NW-NW (1269' FNL & 1048' FWL)

Sec: 7 Twsp: 23S Rge: 11W

County: Stafford State: Kansas

GL: 1828' KB: 1835'

Contractor: Southwind Drilling Company Rig #4

Spud: 4-12-13 Comp: 4-16-13

RTD: 3800' LTD: 3797'

Mud Up: 2400' Type Mud: Chemical/Displaced

Samples Saved From: 2600 to RTD

Drilling Time Kept From: 2600 to RTD

Samples Examined From: 2600 to RTD

Geological Supervision From: 3150 to RTD

Geologist on Well: K. Talbott

Surface Casing: 8 5/8" @ 351'

Production Casing: 5 1/2" set and cemented

Electronic Surveys: By Pioneer: CNL/CDL, MEL, DIL

	Pauley Oil				Paulery Oil	
	FSI #5				Spare	
	SE-SE-NW-NW Sec. 7-T23S-11W				SE-NW-NW-SW Sec. 7-T23S-R11W	
KB	1835				1834	
Formation	Sample	Sub-sea	E-Log	Sub-Sea	Sample	Sub-sea
Anhydrite			708	1127		1834
Base Anhy.			729	1106		1834
Heebner	3130	-1295	3132	-1297	3133	-1299
Toronto	3150	-1315	3147	-1312	3153	-1319
Brown Lime	3271	-1436	3270	-1435	3278	-1444
ensing	3298	-1463	3285	-1450	3302	-1468
Viola	3592	-1757	3591	-1756	3595	-1761
Simpson	3625	-1790	3624	-1789	3624	-1790

Viola	3592	-1757	3591	-1756	3595	-1761
Simpson	3625	-1790	3624	-1789	3624	-1790
Arbuckle	3678	-1843	3680	-1845	3679	-1845

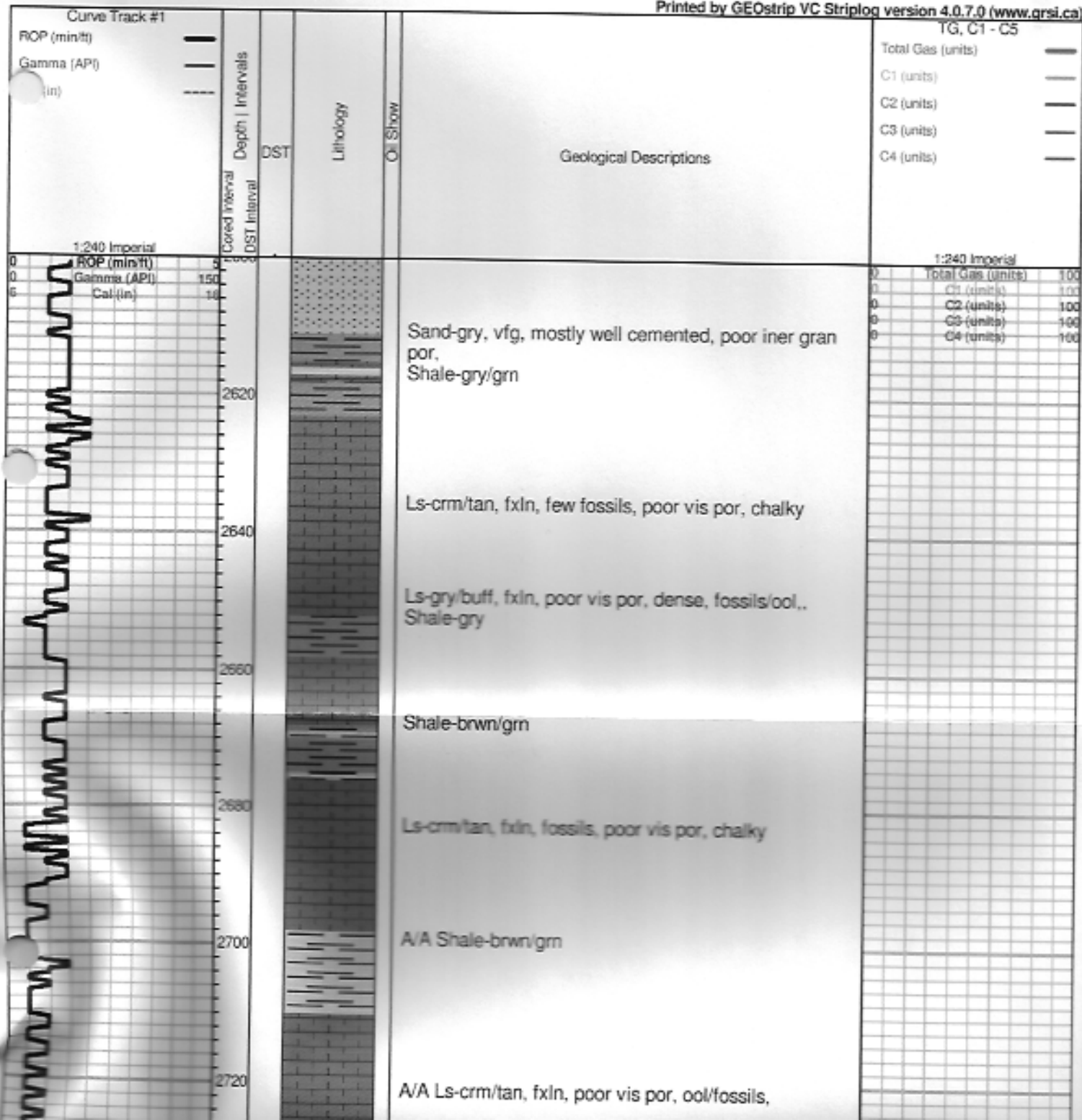
ROCK TYPES

Chl	Dolprim	shale, gm	Carbon Sh	Ss
Chl vari	Lmst fw<7	shale, gry	Shool	

OTHER SYMBOLS

- DST
 DST Int
 DST alt

Printed by GEOstrip VC Striplog version 4.0.7.0 (www.grsi.ca)



2720
2740
2760
2780
2800
2820
2840
2860
2880
2900
2920

ROP (min/ft)
Gamma (API)
Cal (in)

0
0
6

8
150
10

A/A Ls-crm/tan, fxln, poor vis por, ool/fossils,

Shale-gry, silty, mica

Ls-crm/tan, fxln, fossils, poor vis por, chalky
Shale-brwn/grn

A/A

Shale-gry/ slightly silty

Ls-gry/buff, fxln, fossils/ool, poor vs por

Sand-gry, vfg-fg, poor iner gran por, mica, glauconite

Ls-crm/tan, fxln, fossils, poor vis, por, chalky

A/A

Ls-crm/tan, fxln, fossils, poor vis por, chalky

A/A

Ls-crm/tan, fxln, fossils, poor vis por, slightly chalky

Ls-crm/tan, fxln, fossils, poor iner xln por, dark brown to black spotty stains nsfo, no odor

0	Total Gas (units)	100
0	C1 (units)	100
0	C2 (units)	100
0	C3 (units)	100
0	C4 (units)	100

to black epoxy stains here; no odor

2940
2960
2980
3000
3020
3040
3060
3080
3100
3120
3140

ROP (min/ft)
Gamma (API)
D (in)

A/A

Ls-crm/tan/gry, f-med xln, fossils, poor iner xln por, trace brown stains, NSFO, No odor

A/A

Ls-crm/tan, f-med xln, fossils, poor iner xln por, chalky

0	Total Gas (units)	100
0	C1 (units)	100
0	C2 (units)	100
0	C3 (units)	100
0	C4 (units)	100

A/A

Ls-wht/lt gry, f-med xln, poor iner xln por, fossils, chalky

Ls-wht/lt gry, f-med xln, poor iner xln to vug por, fossils, chalky

Ls-crm/tan, f-med xln, ool/fossils, slightly dolomitic, poor iner xln por, chalky

A/A

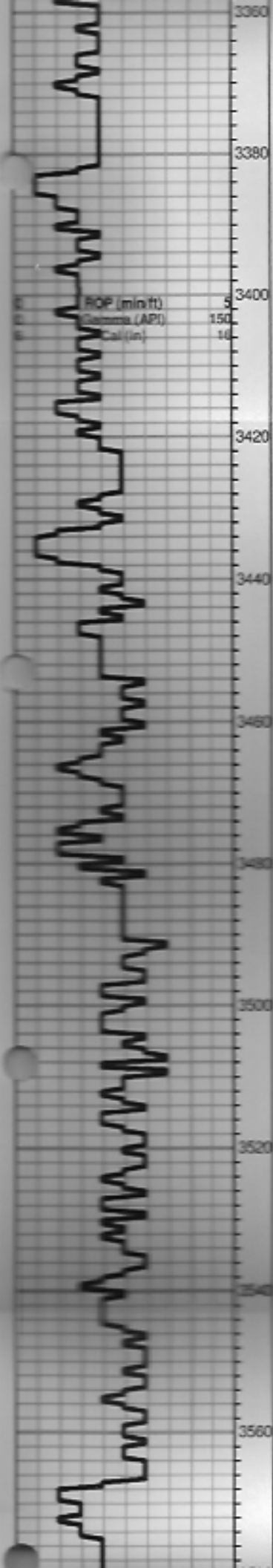
Ls-gry/tan, fxln, fossils, poor vis por, chalky, chery
Shale-brwn/gm

Heebner 3130.0 (-1295.0) -1293.0

Black carbon shale

Shale-brwn/gry/gm

Toronto 3150.0 (-1315.0) -1311.0



Ls-gry/tan, fxln, fossils/ool, poor vis por, dense
Chert-gry/wht

Ls-crm/tan, fxln, fossils, poor/fair iner xln to vug por,
Brown stains, SFO, poor/fair odor

Ls-wht/crm/tan, fxln, ool/fossils, oom por, brown stains,
broken open fair/good SFO, faint odor.

Total Gas (units)	100
C1 (units)	100
C2 (units)	100
C3 (units)	100
C4 (units)	100

Ls-crm/tan, fxln, ool, scattered oom por, Trace brown
stains, TrSFO, faint odor

Ls-tan/lt gry, fxln ool, scattered good oom por with
poor vug por, golden brown stains, SFO,

Ls-lt gry/wht, fxln, ool/fossil,s poor oom and vug por,
golden brown stains, SFO, faint odor

Ls-wht/lt gry/crm, fxln, ool, poor iner ool to iner xln por,
golden brown stains, SFO, faint/fair odor

Ls-crm/tan, fxln, ool, poor vis por, chalky

Ls-crm/tan, fxln, ool, poor vis por, chalky

Ls-crm/wht, fxln, poor vis por, chalky

Ls-crm/tan, fxln, few fossils, poor vi spor, chalky

Shale-brwn/gry/gm

Ls-crm/wht/lt gry, fxln, poor iner xln por, sucrosic, trace
dark brown stains, NSFO, no odor



Ls-A/A
Chert-wht/crm

Chert-wht/crm

Trace sand-clear, fine grained, glauconitic, poor iner granular por, firm

Viola 3592.0 (-1757.0) -1757.0

Ls-tan/crm, f-med xln, fossils, poor/fair ine rxln to ppt por, golden brown stains, SFO,

Chert-tan/crm/wht, Gas Bubbles??

Chert-wht/crm/tan, semi-trip golden brown stains, SFO, odor

Simpson Shale 3625.0 (-1790.0) -1789.0

Shale-bwn/gry/gm

Chert-wht/tan, mostly fresh, shale-bwn/gm

Sand-gry/gm/wht, fine grained, glauconitic, mostly firm , poor iner gran. por, dark brown to black stains, TrSFO

Arbuckle 3678.0 (-1843.0) -1845.0

Dol-crm/tan/buff, f-med xln, few rhomb, mostly dense, poor iner xln por, golden/dark brown stains, Broken open SFO, good odor

Dol-crm/tan, f,xln, dense, poor iner xln with good scattered vug por, golden brown stains, SFO, good odor

Dol-crm/tan, f-med xln, few rhomb xln, poor iner xln to vug por, golden brown stains, Broken open TrSFO, good odor, Chert-boney wht/crm

A/A Scattered good vug por,

Dol-crm/tan, f,xln, dense, poor iner xln, por, trace stains, No odor

A/A chert- boney wht/crm

Dol-wht/crm, fxln, dense, poor vis por, cherty, chalky

	Total Gas (units)	100
0	C1 (units)	100
0	C2 (units)	100
0	C3 (units)	100
0	C4 (units)	100

