

GEOLOGIST'S REPORT

DRILLING TIME AND SAMPLE LOG

COMPANY <u>Trans Pacific Oil Corp.</u>	ELEVATIONS	
LEASE <u>Suttle A. #1-9</u>	KB <u>2091</u>	
FIELD _____	DF _____	
LOCATION <u>1240' FSL, 2290' FEL</u>	GL <u>2096</u>	
SEC <u>9</u> TWSP <u>18s</u> RGE <u>18w</u>	Measurements Are All From <u>KB</u>	
COUNTY <u>Rush</u> STATE <u>Kansas</u>	CASING SURFACE <u>8 5/8" @ 1247'</u>	
CONTRACTOR <u>Shields Drilling</u>	PRODUCTION <u>5 1/2" @ 3852'</u>	
SPUD <u>4/19/13</u> COMP <u>4/27/13</u>	ELECTRICAL SURVEYS	
RTD <u>3854'</u> LTD <u>3854'</u>	<u>Nabors</u>	
MUD LP <u>2800'</u> TYPE MUD <u>Chemical</u>	<u>RAG Log</u>	

SAMPLES SAVED FROM <u>3400</u>	TO <u>TD</u>
DRILLING TIME KEPT FROM <u>3050</u>	TO <u>TD</u>
SAMPLES EXAMINED FROM <u>3400</u>	TO <u>TD</u>
GEOLOGICAL SUPERVISION FROM <u>3250</u>	TO <u>TD</u>
GEOLOGIST ON WELL <u>W. Bryce Bidleman</u>	

FORMATION TOPS	LOG	SAMPLES
Anhydrite	1257 (+834)	-5'
Base Anhydrite	1283 (+808)	
Heebner	3434 (-1343)	-4'
Lansing	3487 (-1396)	-1'
Base Kansas City	3748 (-1457)	-1'
Arbuckle	3851 (-1760)	-14'
RTD	3854 (-1763)	
LTD	3854 (-1763)	

Reference well:
S.A. Allison Young #3
SE SW 26 9-18s-18w

REMARKS Due to encouraging drill stem test results, 5 1/2" production casing will set one foot into the Arbuckle to further evaluate the Arbuckle for prod

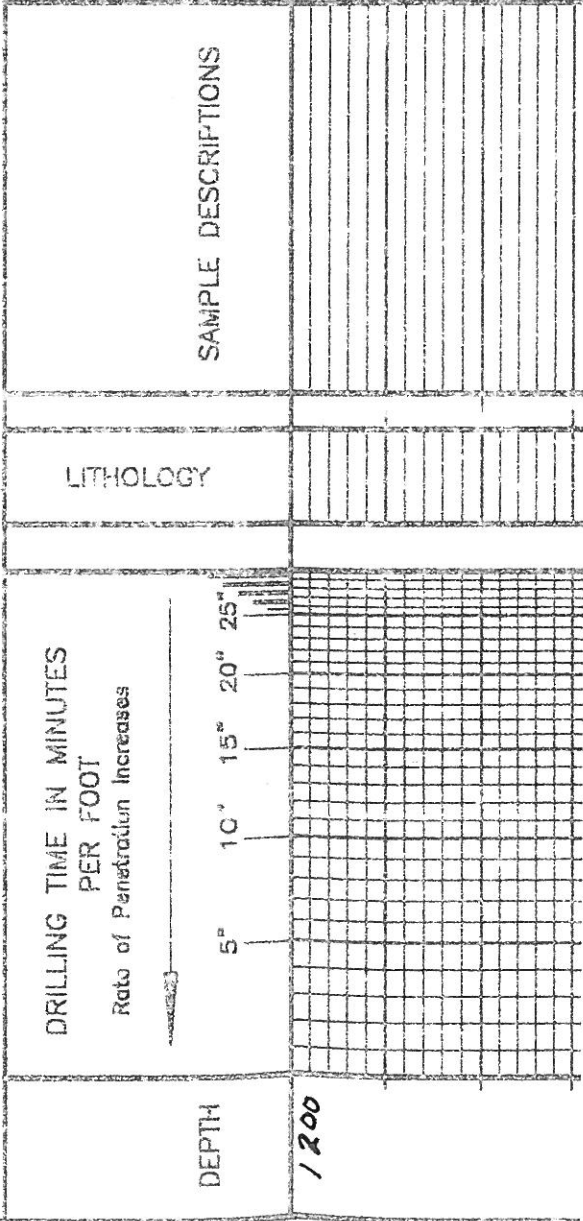
Respectfully,

W. Bryce Bidleman

LEGEND

- Dolomite
- Chert
- Coal Lime
- Limestone
- Carb sh
- Shale
- Sandstone
- Salt
- Anhydrite

SCALE " = 100'



8 1/2" @ 1200'

Anhydrite 1257 (1834)
Flag - same

Base Anhydrite 1283 (1808)
Flag - same

Top of 3175 (1084)
Flag 3176 (1085)

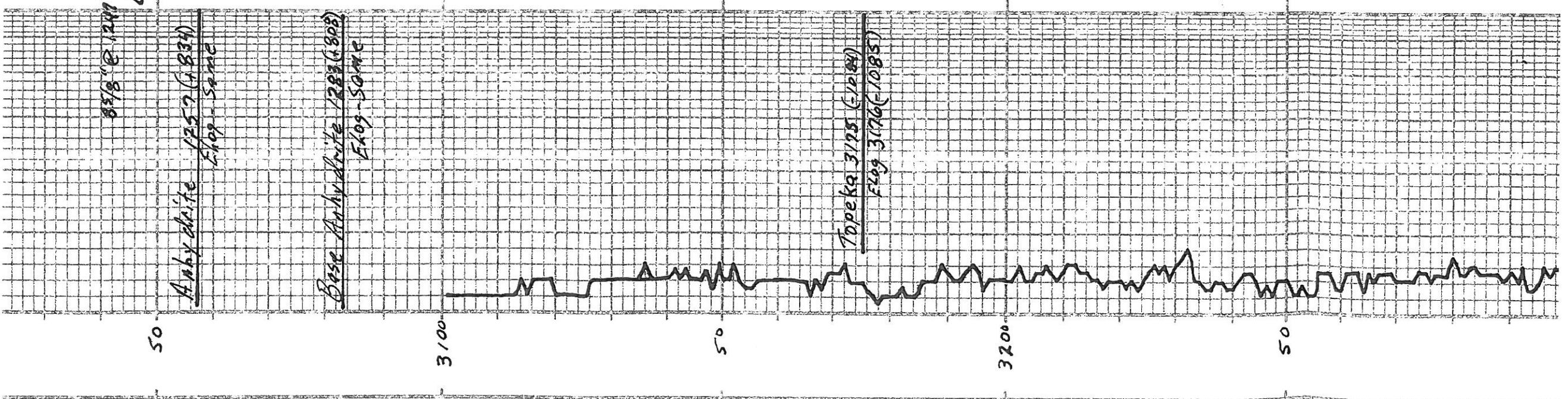
50

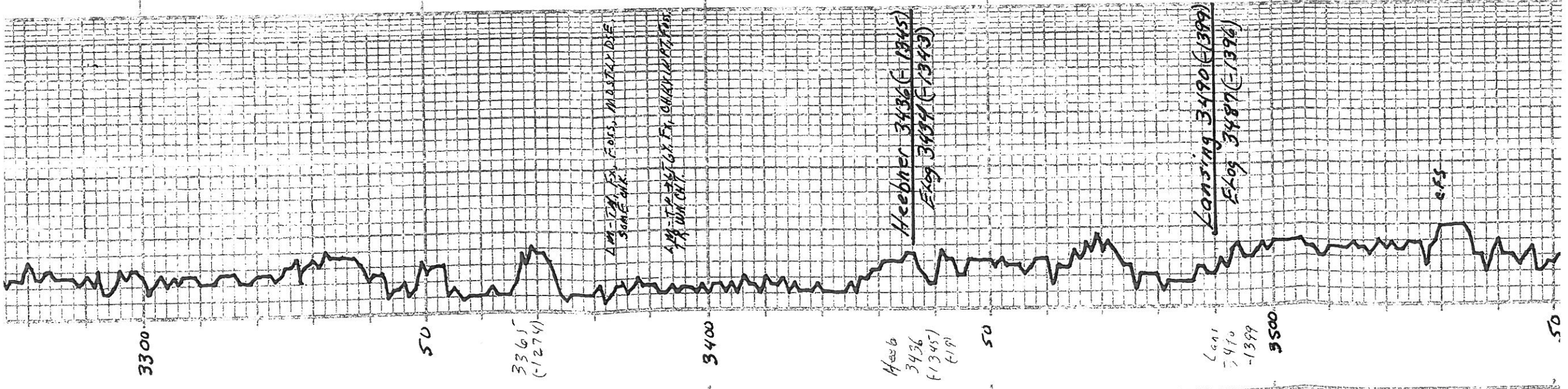
3100

50

3200

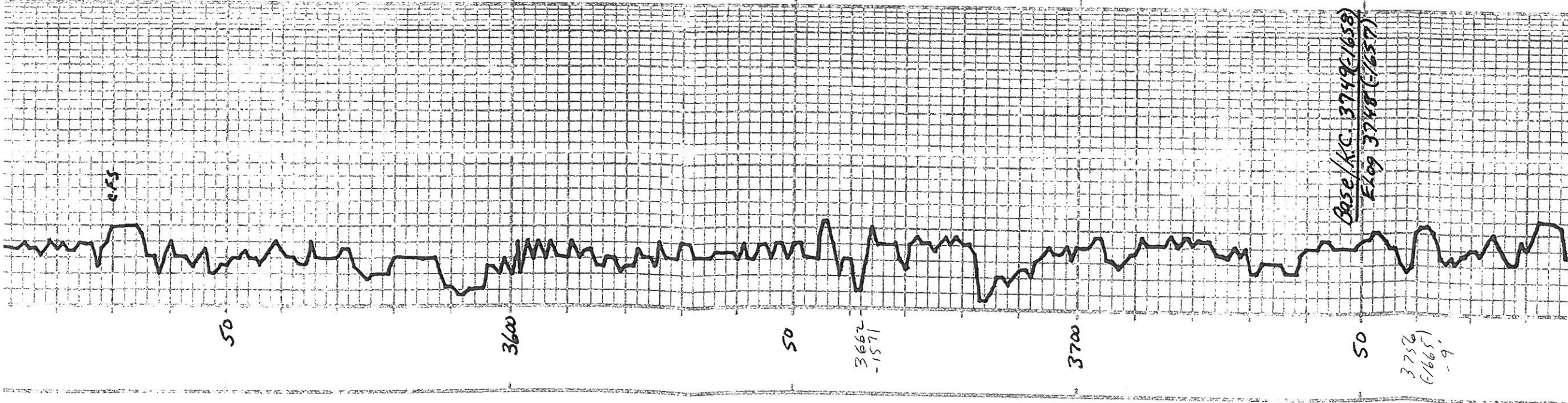
50



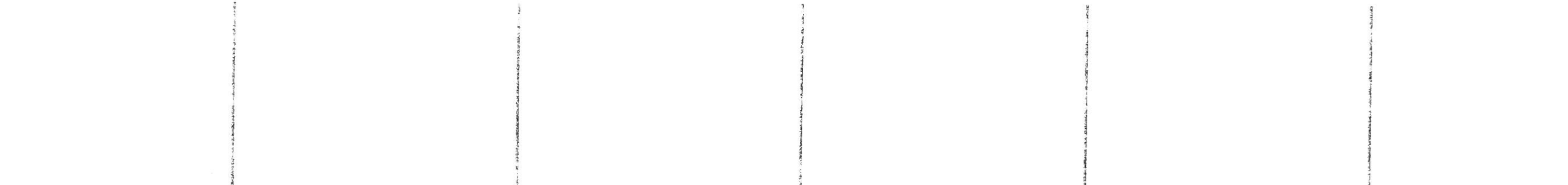


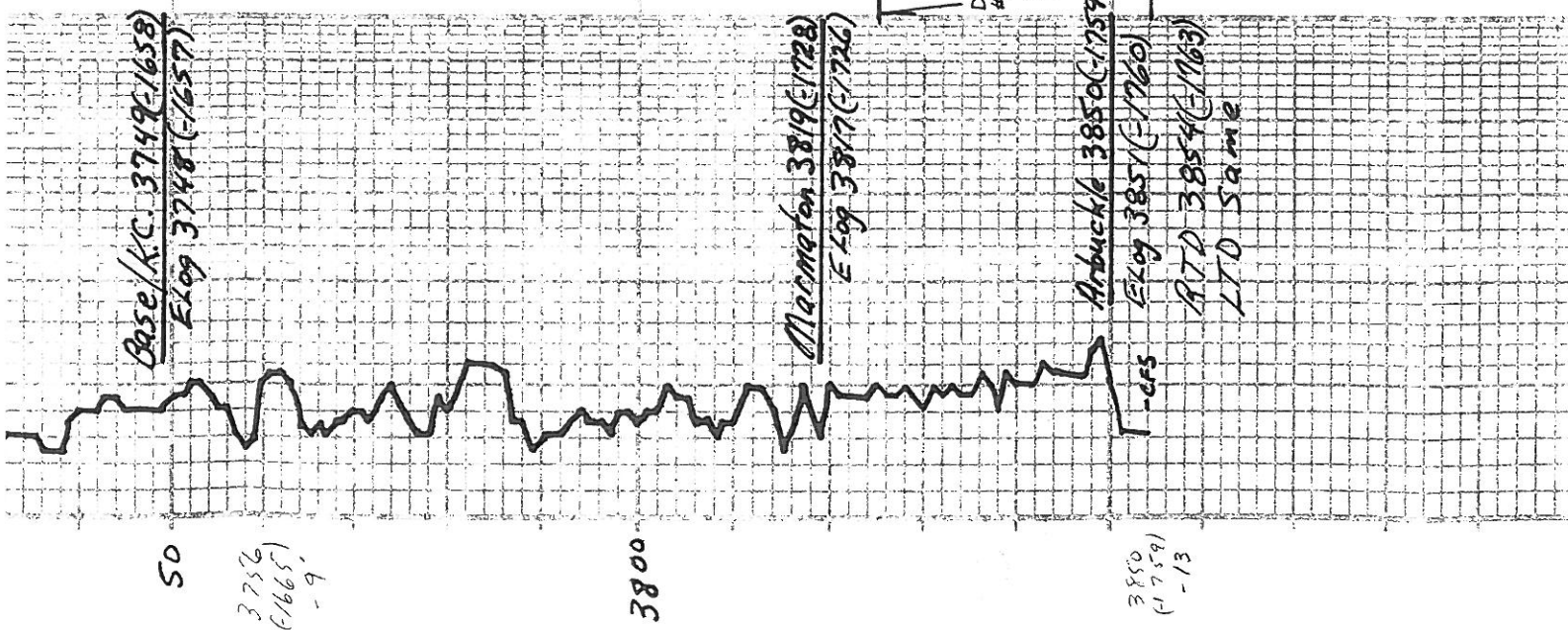
Vertical columns of handwritten notes, likely describing vegetation or soil characteristics, corresponding to the graph above.

LM-TM, FX, FOSS, GRAY IN PT, F.R AMT, SOFT, CHK. CHT-TM-TM, FOS.	LM-TM-TM, FX, FOS, SCAT PR VEG, I. FOS MLD, GRAY, CHT-AA	LM-TM-TM, FX, FOS, DISE, SL LESS CHK.	LM-TM-TM, GM, FY, FX, FEW FOS, DISE, BLK, GRB.	LM-TM-TM, GM, FX, FOS, DISE, HARD, SH-RD-TM, GR.	SH-RD-TM, GR-TM, GR.	LM-TM-TM, GM, FX, FEW FOS, DISE, SM AMT, SOFT, CHK. N.S.	LM-TM-TM, GM, FX, MOSTLY DISE, SMALL AMT, CHK. SH-RD-TM, GR-TM, GR.	LM-TM-TM, FX, FEW FOS, DISE, N.S.	LM-CRM-TM, FX, FEW FOS, SMALL AMT, CHK. SH-RD-TM, GR.	LM-TM-TM, GM, FY, FX, FOS, DISE, GRAY, R. PT, N.S.	LM-CRM-TM, FX, FOS, DISE, GRAY, R. PT, N.S.	LM-TM-TM, GM, FY, FX, DISE, GRAY, R. PT, N.S.
---	--	---------------------------------------	--	--	----------------------	--	---	-----------------------------------	---	--	---	---



LM-TN-TX-TU → GY, FX, FOSS,
DSE. SH-RD → SH-RD →
GY.
LM-CRM → GRM, Ex, Foss, MOSTLY
DSE, CHRY IN PT. NS.
LM-CRM → GRM, Foss, 2 SPAT PR
VGLG, MOSTLY DSE, CHRY IN PT.
LM-TU → TU → GY, FX, DSE,
SH-RD → GRM → GY.
LM-CRM → TU, Ex, MOST. DSE,
CHRY IN PT. NS.
LM-AA.
LM-TU → GRM, Ex, Foss, SHOT
FR VGLG, Foss MOSTLY CHRY
IN PT.
LM-CRM → TU → GY, Foss, EX, MOSTLY,
DSE. CHRY IN PT.
SH-RD → GRM → GY.
LM-TU → GY, Foss, FEW DDLIES,
SH-RD → GRM → GY. TR GY FOR CHRY
IN PT.
LM-TU → GRM, Foss, DDLIT IN PT.
DSE. SH-RD → GRM, SHP.
CHRY IN PT.
SH-AA.
LM-AA. ELMER W/GRM, CHRY - AA.
SH-RD → GRM → GY → BSK, CARB.
LM-TU, F → MX, DDLIT, 60 DDLAD
CHRY IN PT. NS.
LM-CRM → TU, Ex, Foss, DDLIT IN
PT. MOST DSE, CHRY IN PT. NS.
SH-RD → GY.
LM-TU, Ex, DSE, HARD, FEW
DDLIES, FOSMOS, FRUIT ABOVE.
LM-AA.
SH-RD → GRM → GY → BLK.
LM-TU → GRM, Ex, MOSTLY DSE,
CHRY IN PT. NS. SHLY - RD → GY, SOME
GY GLASS.
LM-WH → GRM → TU, Ex, FEW
Foss, MOSTLY DSE.
CHRY IN PT. NS.
LM-CRM → TU, Ex, FEW Foss,
DSE, CHRY IN PT. CHRY - AA.
LM-AA.
SH-AA → GRM → GY → BLK.
LM-CRM → TU, Ex, MOSTLY DSE,
SH-RD → GRM → GY, SOME GY
GLASS.
LM-TU, F → MX, FEW Foss,
DDLIT, 60 DDLAD, NS.
LM-TU, Ex, Foss, DDLIT IN PT, FEW
DDLAD, MOSTLY DSE.
SH-GY.
LM-CRM → TU, Ex, FEW SOAT
Foss, VGLG, DSE, CHRY IN PT. NS.
LM-CRM → TU, Ex, Foss, DSE.
CHRY IN PT.
LM-TU, Ex, DSE, SOME GY DSE
SH-RD → GRM → GY → BLK.
LM-TU, Ex, DSE, CHRY IN PT.
SH-RD → GRM → GY.
LM-CRM → TU, Ex, Foss (in PT),
MOSTLY DSE, CHRY IN PT.
LM-AA.
SH-AA → GRM → GY.
LM-AA, SH-RD, FR AMT. SOFT
RD GLASS. TR EUR RD, CHRY.
LM-AA → GRM, Ex, FEW Foss
FR AMT. CHRY, TR RD → OR, CHRY.
SH-AA.
LM-CRM → TU, Ex, MOSTLY DSE, CHRY





DEPTH
 3750
 (1759)
 -13

3800

3750
 (1665)
 -9

DRILLING TIME Minutes/Foot

5 10 15 20 25

Rate of Penetration Increases

COMPANY Trans Pacific Oil Corporation

LEASE Suttle A-1-9

LOCATION 1240' E 51, 2290' E 12 SEC 9 T1P 18 S RING 18 W

COUNTY Rush STATE Kansas

LITHOLOGY

SAMPLE DESCRIPTIONS

REMARKS

ELEVATION: K.B. 2091

LM-TU → FX, DSE, CHKY W. PT.
 SH-70 → 61 → 62

LM-CRM → TU, FX, Foss (w/PT)
 MOSTLY DSE, CHKY W. PT.

LM-AA
 SH-MAR → GRN → GY.

LM-AA SH-RD. FR AMT SOFT
 RD CLAYS. TR GRD. SMT.

LM-LH → GRM, FX, Foss
 FR AMT CHX. TR RD → OR ENT.
 SH-AA

LM-CRM → TU, FX, MOSTLY DSE, CHAT
 10 FT. SL. MAR IN ENT-ORANGE,
 CLR. FINE SH.

SH-AA. SPA WASHED SL. RED.

LM-CRM → TU, FX, MOSTLY DSE, FR
 AMT. CHX. FR AMT ORANGE CHX.
 SH-GY.

LM-AA, ORANGE CHT.
 SH-MAR → GRN → GY. SOME BROWN
 CLAYS.

LM-TU → GY-TU, FX, DSE.
 ENT-ORANGE, TRANS, JHR.

LM-TU → GY, F → MY, DSE
 SH-MAR → GRN → GY → BK.

LM-GY-TU → AT GY, FX, DSE,
 HARD, SB-LITH.

DOL-CRM F → MY, SUGAR LPT
 RE LIT-AL → F → GY, F → TU,
 PROPERLY, FEW STIPS AT 3RD,
 WK OOKR, FR FLU.

DST #1 3825-3854'
 30-75-60-90
 1st Open - Built to 8"
 2nd Open - 808/43" (W)
 Rec: 150' 61P
 165' 60 (9520)
 119' SWC 654 MCO
 — (5620, 28 W

284' Total F. mi.
 FP: 18-51 / 56-1.
 SIP: 1220 / 1217
 HP: 1843 / 1813