

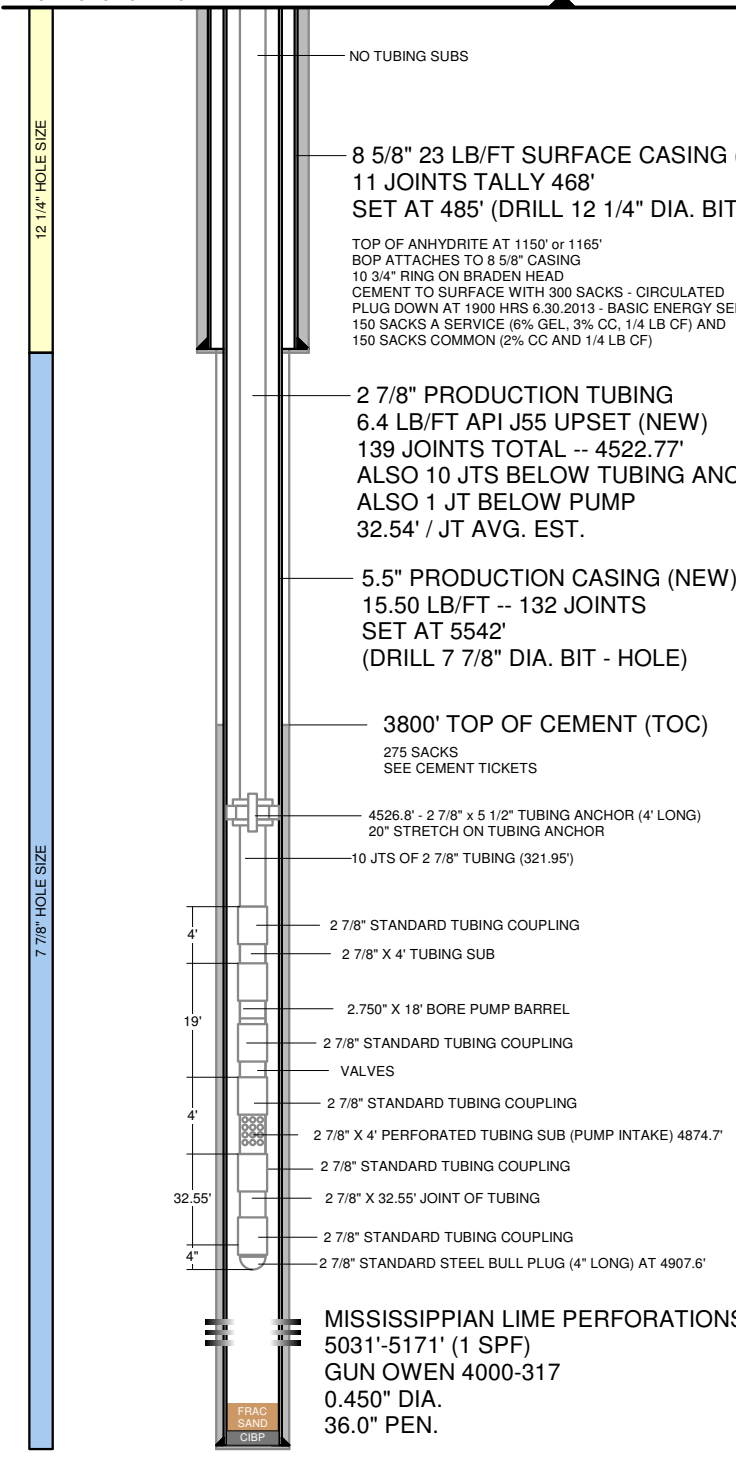
SURFACE TEMP: 90 DEG F

K.B.: 13'

G.L. ELEVATION 2235' (SHL)

SET TOP CLPG 12" AGL

5 1/2" X 2 7/8" TUBING HEAD



NOTES:

PUMPING UNIT: C - 456 -320 - 144 (104" SURFACE STROKE)  
CONVENTIONAL SENTRY UNIT (NEW)  
50HP ELECTRIC MOTOR WITH 50 HP SPOCC VFD  
VFD INSTALLED  
RUN TIME: 24 HRS PER DAY  
1.25" X 25' POLISHED ROD WITH LINER ASSEMBLY  
2', 4', 4" AND 8' PONY RODS ON TOP (7/8" N97 GRADE)  
1.50" X 22' HARD LINED POLISHED ROD LINER WITH SEAL  
85 - 7/8" GRADE N97 SUCKER RODS ON TOP  
103 - 3/4" GRADE N97 SUCKER RODS ON BOTTOM  
4 - 1.50" X 25' SINKER BAR ON TOP OF PUMP  
ONE 4' X 7/8" GRADE N97 PONY ROD ON BOTTOM (TOP OF PUMP)  
SPEED RANGE: 4 TO 13 SPM  
MAX. SPEED: 13 SPM  
CURRENT SPEED: 10 SPM  
9500 TO 10,000 LBS OF TOTAL ROD WEIGHT  
MAX. DISPLACEMENT: 800+ BPD (2.75" BORE PUMP)  
TUBING ANCHOR SET IN HOLE

TUBULARS

PURPOSE	CONDUCTOR	SURFACE	INTERMEDIATE	PRODUCTION	PROD. TUBING
SIZE	13 3/8"	8 5/8"		5 1/2"	2 7/8"
WEIGHT	NONE	2,946 PSIG	NONE	15.5 LB/FT	6.40 LB/FT
GRADE	NONE	J-55	NONE	J-55	J-55
BURST	NONE	24.0 LB/FT	NONE	4,812 PSIG	7,265 PSIG
COLLAPSE	NONE	381,395 LBF	NONE	4,043 PSIG	7,676 PSIG
YIELD	NONE	1,434 PSIG	NONE	248,274 LBF	99,661 LBF
CAPACITY	NONE	0.064 BBL/FT	NONE	0.024 BBL/FT	0.006 BBL/FT
THICKNESS	NONE	0.2640"	NONE	0.2750"	0.2170"
ID	NONE	8.0970"	NONE	4.9500"	2.4410"
DRIFT ID	NONE	7.9720"	NONE	4.8250"	2.3470"
AREA	NONE	51.49 IN2	NONE	19.42 IN2	4.68 IN2
SETTING DEPTH	NONE	468'	NONE	5,542'	4900' IN WELL
LENGTH	NONE	468'	NONE	5,542'	NEED 5515'
FOB	NONE	CHASE, KS	NONE	CHASE, KS	CHASE, KS
COST	NONE	\$ / FT	NONE	\$ / FT	\$ / FT

DATE	12/06/2012
APPROVED BY	B. KELSO
AFE	915
API No.	15097217590000
GL ELEVATION	2235'
KB	13'
KB ELEVATION	2248'
RIG	KELSO

MISSISSIPPIAN LIME PERFORATIONS:

STAGE ONE FRAC ON 08/12/2013 AND PERFORATING ON 07/22/2013  
37 PERFORATIONS FROM 5087 TO 5171 IN THE LOWER SECTION OF THE MISSISSIPPIAN LIME

PERFORATION DETAIL:  
5087, 5088, 5089, 5090, 5091, 5092, 5093, 5094, 5095, 5096, 5097, 5098, 5099, 5105, 5113, 5125, 5127, 5129, 5130, 5132, 5134, 5135, 5140, 5142, 5144, 5146, 5148, 5151, 5152, 5154, 5155, 5156, 5157, 5158, 5162, 5167, 5171

TOTAL CROSS-SECTIONAL AREA: 5.884 IN2 (WIITH 37 - 0.450" HOLES)

PLUG BETWEEN STAGES SET ON 08/12/2013  
5 1/2" 15.50 LB/FT CIBP SET AT 5082 (IF THERE IS NO CASING COLLAR THERE)

STAGE TWO FRAC ON 08/12/2013  
35 PERFORATIONS FROM 5031 TO 5075 IN THE UPPER SECTION OF THE MISSISSIPPIAN LIME

PERFORATION DETAIL:  
5031, 5032, 5033, 5034, 5035, 5036, 5037, 5038, 5039, 5040, 5041, 5042, 5043, 5044, 5045, 5046, 5047, 5051, 5052, 5053, 5054, 5055, 5056, 5057, 5058, 5059, 5062, 5063, 5064, 5065, 5066, 5067, 5073, 5074, 5075

TOTAL CROSS-SECTIONAL AREA: 5.567 IN2 (WIITH 35 - 0.450" HOLES)

DOWN HOLE SUCKER ROD PUMP:  
2.75" TUBING PUMP  
PUMP LENGTH: 18' (NICARD AND SS)  
PUMP BBL ON TUBING  
4' X 7/8" PONY ROD ON TOP OF PUMP  
PUMP INTAKE DEPTH: 4874'  
PUMP IS SETTING 157' ABOVE PERFS. EST.

PBTD: 5515' MD TVD  
RTD: 5570' MD TVD  
LTD: 5566' MD TVD  
DOWNHOLE TEMP: 150 DEG F

**McCLAREN B #1**  
KIOWA COUNTY, KANSAS  
06-T30S-R18W  
SHL: 330 FNL, 330 FEL  
BHL: 330 FNL, 330 FEL  
NICHOLS FIELD

