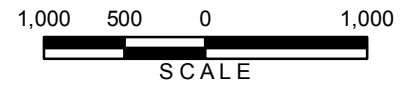
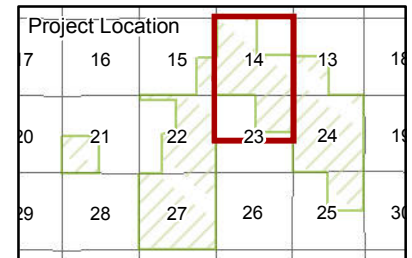
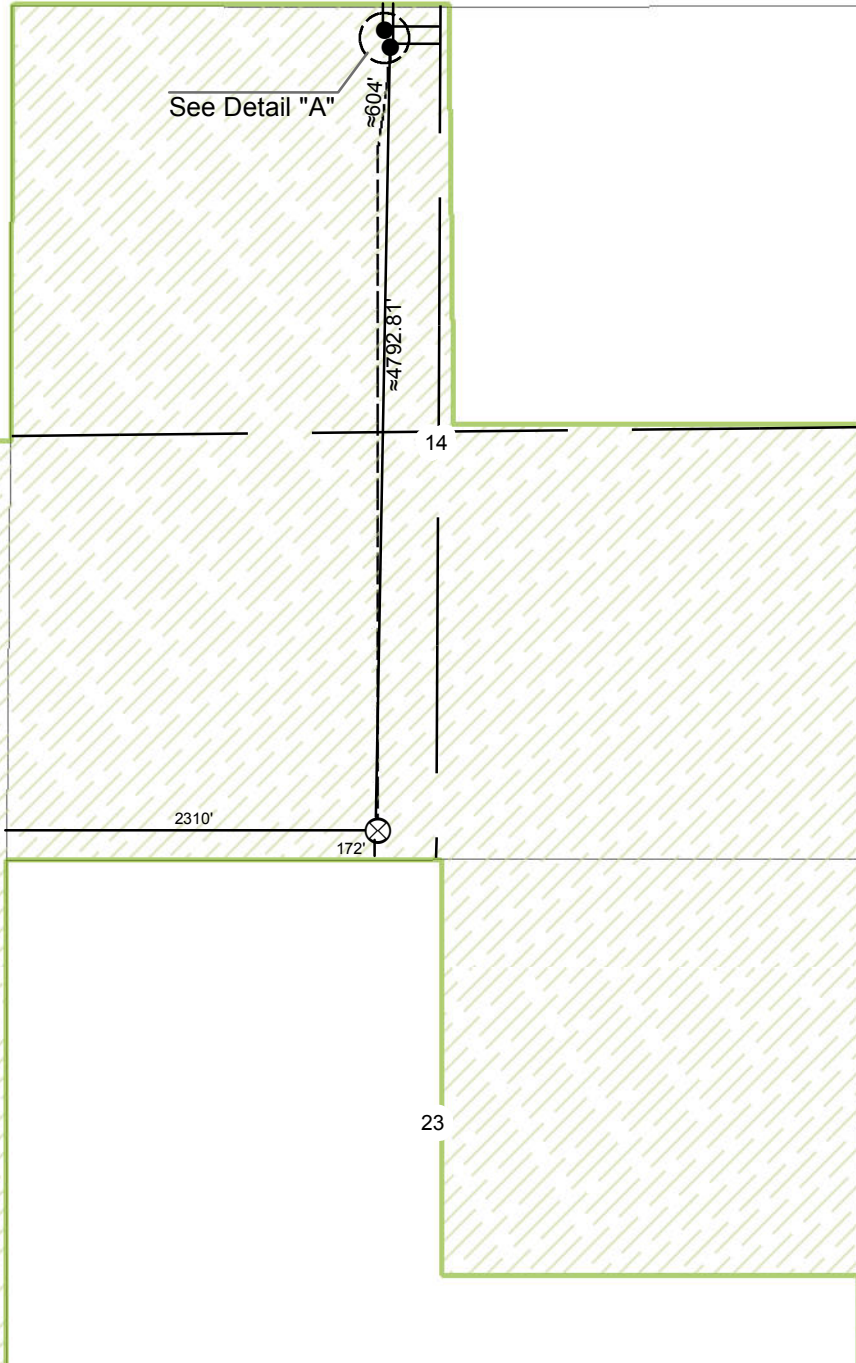
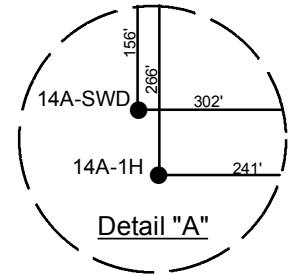


T27S, R12W, 6th P.M.

Well location, 14A-1H, located as shown in the NE 1/4 NW 1/4 of Section 14 T27S, R7W, 6th P.M., Pratt County, Kansas



**LEGEND**

- Proposed Well Head
- ⊗ Target Bottom Hole
- Greengroup Lease Area

The information included on this graphic representation has been compiled from a variety of sources and is subject to change without notice. Kleinfelder makes no representations or warranties, express or implied, as to accuracy, completeness, timeliness, or rights to the use of such information. This document is not intended for use as a land survey product nor is it designed or intended as a construction design document. The use or misuse of the information contained on this graphic representation is at the sole risk of the party using or misusing the information.



PROJECT NO.	135592
DRAWN:	9/10/2013
DRAWN BY:	B. Carlin
CHECKED BY:	R. Zora
FILE NAME:	Greengroup14A.mxd

**Seneca Resources  
Greengroup 14A-1H**

Pratt County, Kansas

FIGURE