

DMT Company

Onsite Hydrocarbon Detection

WELL FILE

Scale 1:240 (5"=100') Imperial
Measured Depth Log

Well Name: BRADFORD #1
Location: N2 S2 SE SE SECTION 29 23S 23W
License Number: 34317, API# 15-083-21889
Spud Date: 6/28/2013
Surface Coordinates: 400' FROM SOUTH LINE OF SECTION
660' FROM EAST LINE OF SECTION
Bottom Hole Coordinates: 400' FROM SOUTH LINE OF SECTION
660' FROM EAST LINE OF SECTION
Ground Elevation (ft): 2422' K.B. Elevation (ft): 2435'
Logged Interval (ft): 3900' To: 5420' Total Depth (ft): 5420'
Formation: ARBUCKLE
Type of Drilling Fluid: CHEMICAL, ANDY'S MUD
Region: HODGEMAN CO. KS.
Drilling Completed: 7/9/2013
Printed by WellSight Log Viewer from WellSight Systems 1-800-447-1534 www.WellSight.com

OPERATOR

Company: BEREXCO
Address: 2020 NORTH BRAMBLEWOOD
WICHITA, KANSAS 67206
(316) 337-8312

GEOLOGIST

Name: DAVID GOULD (LOGGER)
Company: DMT COMPANY
Address: 532 SUNRISE
PRATT, KANSAS 67124
(620) 388-2847

Comments

CONTRACTOR:
Beredco Rig #2

BIT RECORD:
#1, 12 1/4, RR 0-270'
#2, 7 7/8, SMITH, F12Y, PY2418, 270-4865'
#3, 7 7/8, SMITH, FH143YG, PX9633, 4865-5420'

SURVEYS:
270' 1/2 DEGREE
786' 3/4 DEGREE
1316' 3/4 DEGREE
2479' 3/4 DEGREE
3589' 3/4 DEGREE
4704' 3/4 DEGREE

DAILY STATUS: (6:00 AM)
6/28/2013, SPUD, DRILL TO 101'
6/29/2013, RUN SURFACE PIPE, WOC, DRILL TO 724'

6/30/2013, DRILL TO 1099', LOSS CIR. LOSS 80 BBLs, DRILL TO 2313'
 7/1/2013, DRILL TO 3052'
 7/2/2013, DRILL TO 3603'
 7/3/2013, DRILL TO 4110'
 7/4/2013, DRILL TO 4510'
 7/5/2013, 4704', DST #1
 7/6/2013, DST #1, DRILL TO 4714', DST #2
 7/7/2013, DST#2, DRILL TO 4864, LOG
 7/8/2013, LOGGING, DRILL TO 5215'
 7/9/2013, DRILL TO 5420', LAY DOWN DRILL PIPE
 7/10/2013, RUN 5 1/2 PRODUCTION CASING

Well Name & No.: Bradford #1-29 Company: Berexco Test No.: 1 Interval Tested: 4698 – 4704

Zone Tested: Mississippi Times: 15-30-60-90

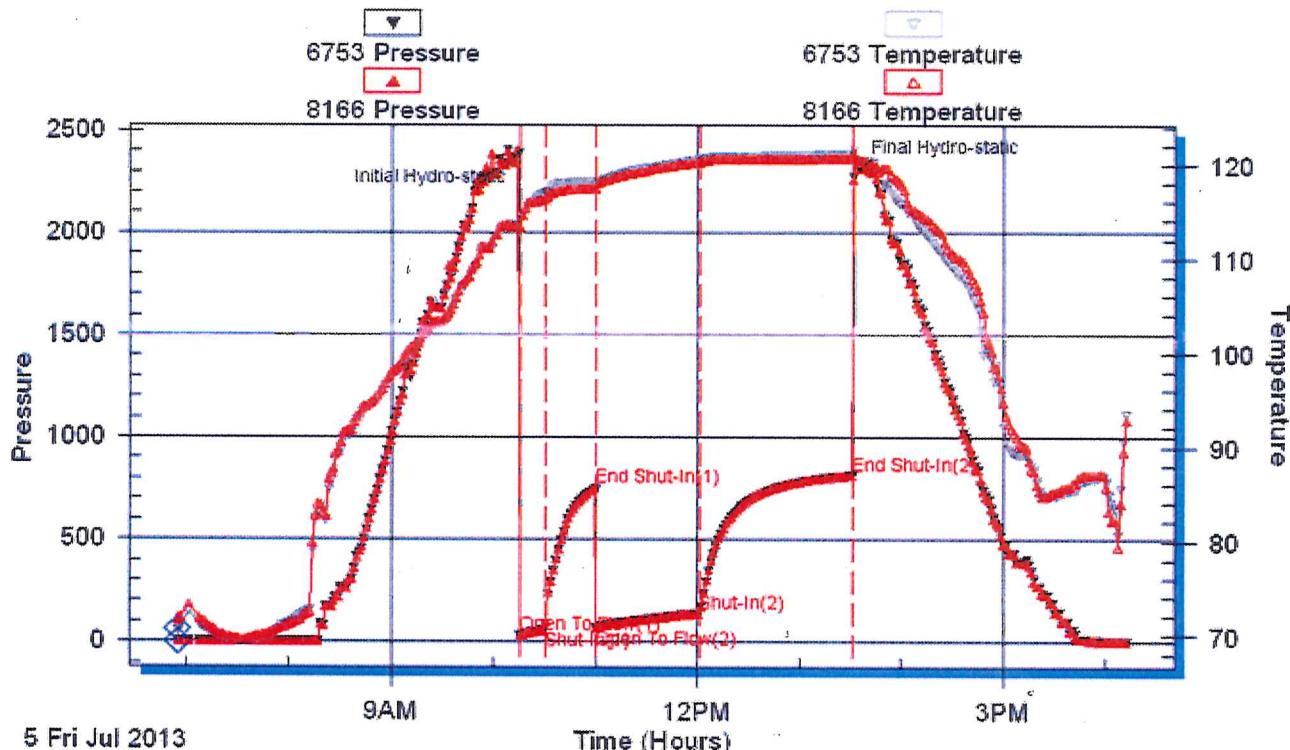
Blow Description: IFP: 3 1/4" Blow ISI: No Blow FFP: BOB in 60 Min. FSI: 3/4" in 30 min. Died in 75 min.

Rec: 180 Feet of GO 25% Gas 75% Oil, 120 Feet of Water 100% Water, 225 Feet of GIP Rec. Total: 300', BHT: 121

Initial Hydrostatic: 2386 First Initial Flow: 35 First Final Flow: 62 Initial Shut-In: 751

Second Initial Flow: 69 Second Final Flow: 138 Final Shut-In: 812 Final Hydrostatic: 2310

Pressure vs. Time



Gauge 6753: Displaying every 3 points.

Well Name & No.: Bradford #1-29 Company: Berexco Test No.: 2 Interval Tested: 4704 - 4714

Zone Tested: Mississippi Times: 15-30-60-90

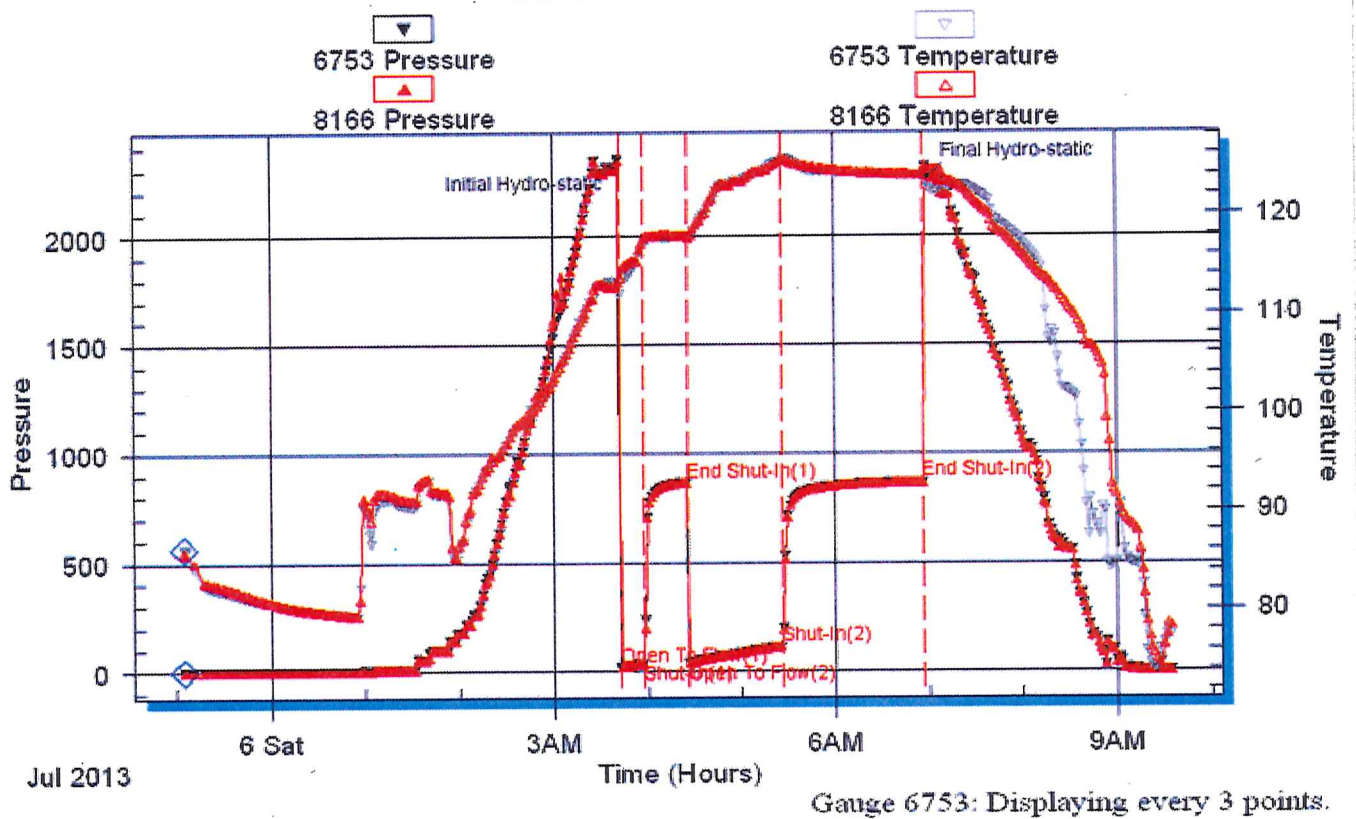
Blow Description: IFP: 1 1/2" Blow ISI: No Blow FFP: 3 3/4" Blow FSI: No Blow

Rec: 185 Feet of VSMCW 95 % Water, 5% Mud, 30 Feet of GO 20% Gas, 80% Oil Rec. Total: 215', BHT: 124

Initial Hydrostatic: 2354 First Initial Flow: 20 First Final Flow: 38 Initial Shut-In: 867

Second Initial Flow: 42 Second Final Flow: 114 Final Shut-In: 868 Final Hydrostatic: 2270

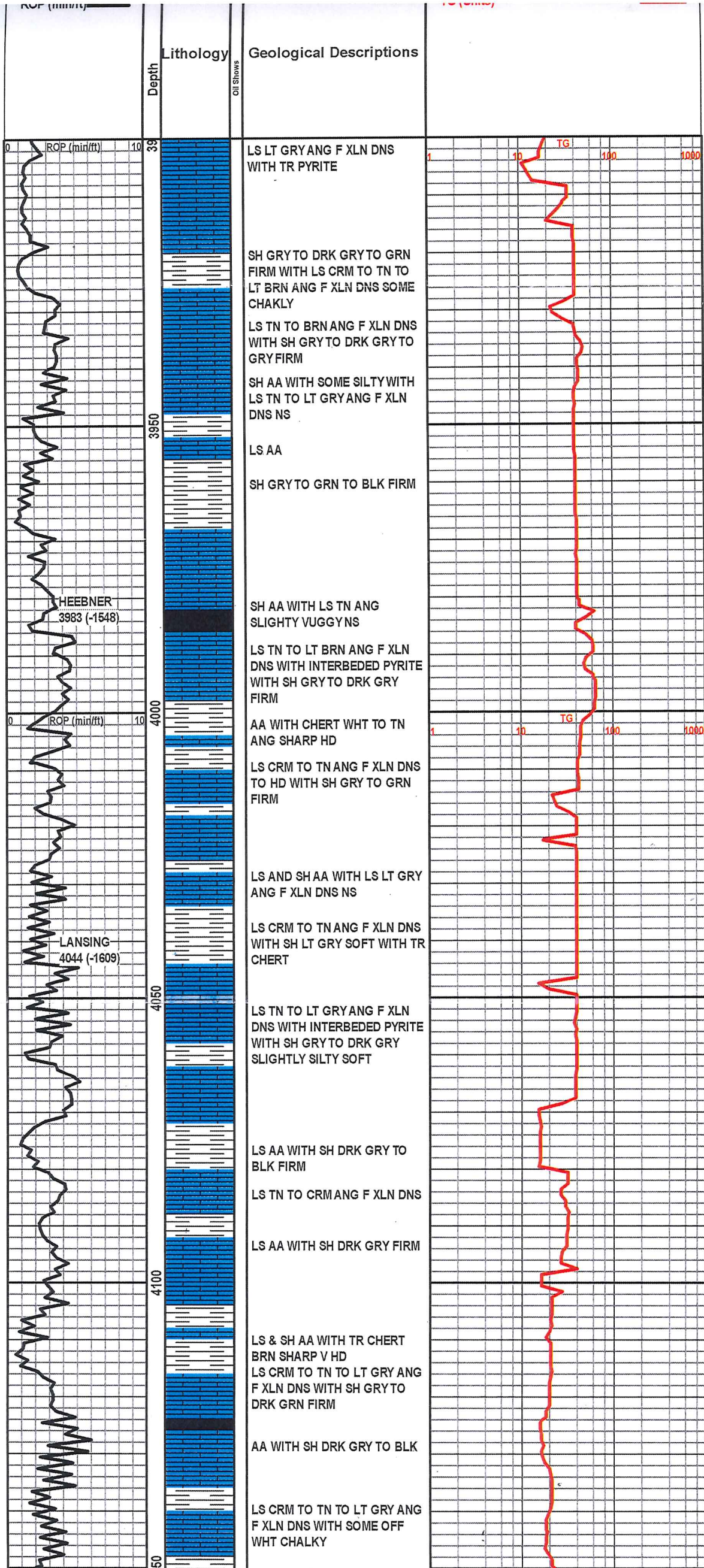
Pressure vs. Time



ROCK TYPES

Anhy	Clyst	Gyp	Mrlst	Shgy
Bent	Coal	Igne	Salt	Slst
Brec	Congl	Lmst	Shale	Ss
Cht	Dol	Meta	Shcol	Till

Curve Track 1				TG
ROP (min/ft)				TG (Units)

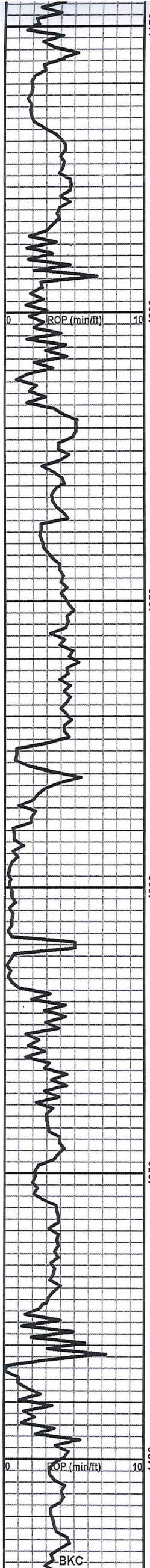


HEEBNER
3983 (-1548)

LANSING
4044 (-1609)

TG

TG



LS AA WITH LS BRN ANG F XLN
DNS WITH SH GRY FIRM

LS CRM TO TN TO OFF WHT
ANG SLIGHTLY CHALKYNS

LS AA WITH SH GRY FIRM

LS CRM AA WITH LS TN ANG
SLIGHTLY DNS WITH V-G PON
POR NS

LS CRM TO TN ANG F XLN DNS
WITH SH GRY TO GRN FIRM

AA WITH SH DRK GRN TO GRY
TO BLK FIRM

LS CRM TO TN ANG F XLN DNS
WITH SOME F-G POR NS

LS AA WITH SOME BEING
CHALKY WITH SH GRY FIRM

LS TN TO BRN ANG F XLN DNS
WITH SH GRY FIRM

LS & SH AA WITH SH GRN FIRM

LS TN ANG F XLN DNS NS WITH
SH LT GRY SOFT TO FIRM

LS & SH AA WITH LS BRN ANG
VUGGY WITH FOSS DNS

LS TN TO LT GRY F XLN FG
OOLICATIC POR NS N FLOR

SH BLK CARB

LS AA WITH LS BRN ANG F XLN
DNS

LS TN TO BRN ANG F XLN DNS
WITH SH GRY TO GRN FIRM
WITH SOME SLIGHTLY SITLTY

SH AA WITH SH BLK FIRM

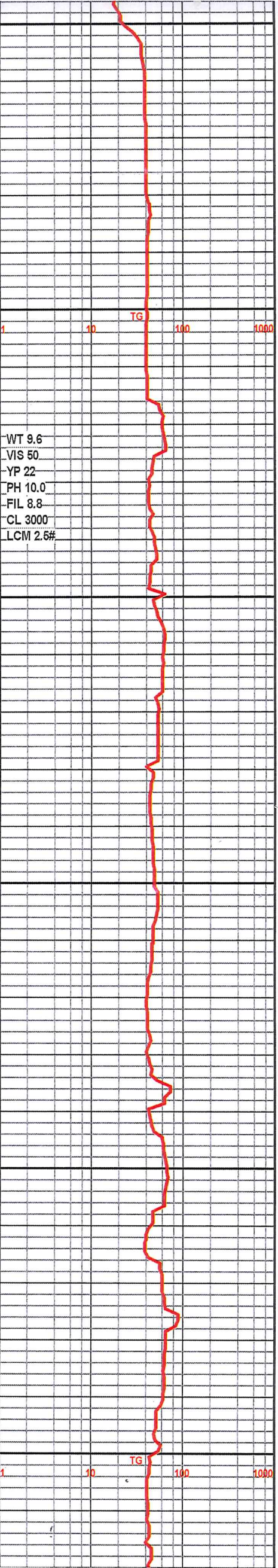
LS BRN ANG F XLN V DNS WITH
INTERBEDED PYRITE WITH SH
GRY FIRM

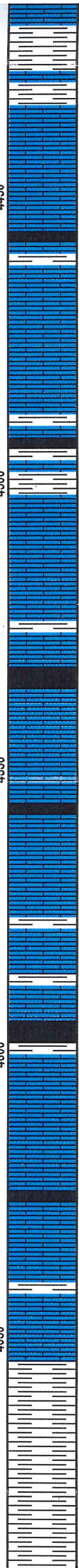
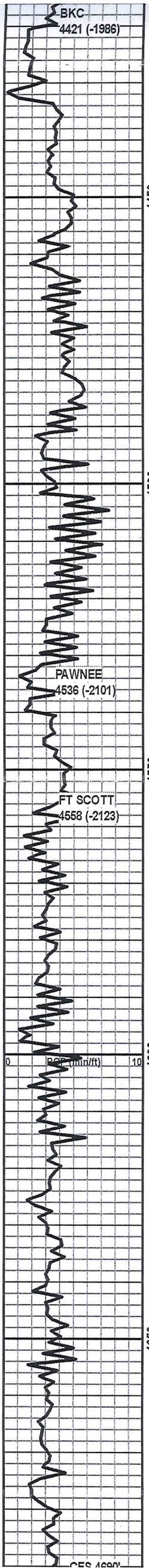
LS TN TO LT GRY ANG F XLN
DNS

LS AA WITH TR CHERT WHT V
DNS

LS AA WITH SH GRY TO GRN
FIRM WITH CHERT DRK GRY TO
BLK SHARP V DNS

LS TN TO BRN TO LT GRY ANG





LS TN TO BRN TO LT GRY ANG
F XLN DNS WITH SH AA

LS CRM TO TN ANG F XLN DNS

SH BLK CARB

LS TN TO BRN ANG F XLN DNS
WITH SH GRY FIRM

LS AA WITH SH DRK GRY TO
BLK FIRM

LS CRM TO TN ANG F XLN DNS
TR PYRITE

LS AA WITH LS BRN ANG DNS

AA WITH SH DRK GRY TO BLK
FIRM

LS TN TO BRN ANG F XLN DNS
WITH LS OFF WHT CHALKY
WITH TR CHERT

SH BLK CARB

LS AA WITH SH DRK GRY TO
GRN TO BLK FIRM

SH BLK CARB

LS AA WITH LS BRN ANG F XLN
SLIGHTLY VUGGY NS

SH BRN TO GRY TO BLK TO
GRN FIRM

SH AA WITH LS BRN ANG
VUGGY F XLN DNS TO HD

MOSTLY SH AA

SH BLK CARB

AA WITH LS TN ANG F XLN DNS

LS BRN TO DRK GRY ANG F
XLN DNS SOME SLIGHTLY
CHAKLY WITH SH AA

SH BLK CARB

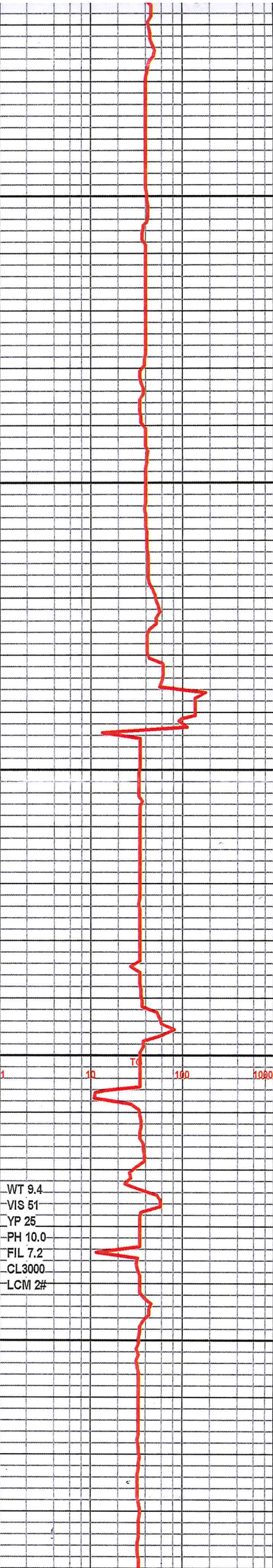
LS CRM TO TN ANG F XLN DNS
WITH SH AA

MOSTLY SH GRY TO BLK TO
GRN FIRM

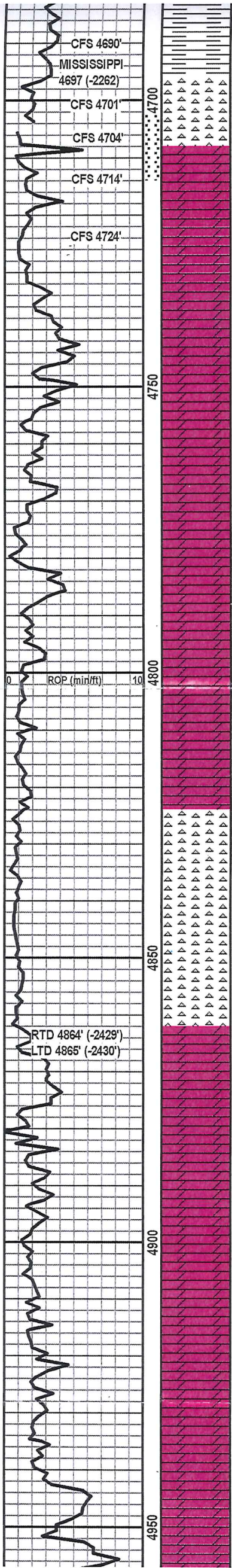
SH AA WITH SOME BEING
SLIGHTLY SILTY

SH GRY TO GRN FIRM WITH
CHERT SHARP WITH PYRITE

SH AA WITH LS TN TO LT BRN
ANG F XLN DNS



WT 9.4
VIS 51
YP 25
PH 10.0
FIL 7.2
CL3000
LCM 2#



SH AA WITH LS TN TO LT BRN ANG F XLN DNS NS

CHERT WHT TO OFF WHT WEATHERED F POR VG BLK STAIN LOTS OF DEAD OIL SOME FREE OIL PAL FLOR G CUT G ODOR WITH DOL TN TO BRN F-M XLN F POR G STAIN FREE OIL G FLOR G CUT G ODOR

DOL LT TN TO LT GRYPANG F XLN F-G POR G STAIN G ODOR FREE OIL G FLOR G CUT

DOL LT TN TO LT GRYPANG F XLN F-G POR SLIGHT OIL STAIN NO FREE OIL

DOL TN TO LT GRYPANG VF TO F XLN F-G POR NO STAIN NS

DOL AA WITH LESS POR & STAIN

DOL TN ANG F XLN P POR NS

DOL LT GRYPANG F XLN DNS ONE PIECE WITH G-VG POR SLIGHT STAIN G SHOW OF FREE OIL G FLOR G CUT

DOL TN ANG F XLN F-G POR NS

DOL TN TO LT GRYPANG F XLN DNS P POR NS

DOL GRYPANG AA WITH CHERT LT TO DRK GRYPANG SHARP V HD

DOL TN TO GRYPANG F XLN DNS WITH SOME G POR NS

DOL AA WITH CHERT WHT TO OFF WHT V HD NS

CHERT WHT TO LT TN TO LT GRYPANG SHARP V HD FRC NS

CHERT AA WITH SOME SLIGHTLY WEATHERED NS

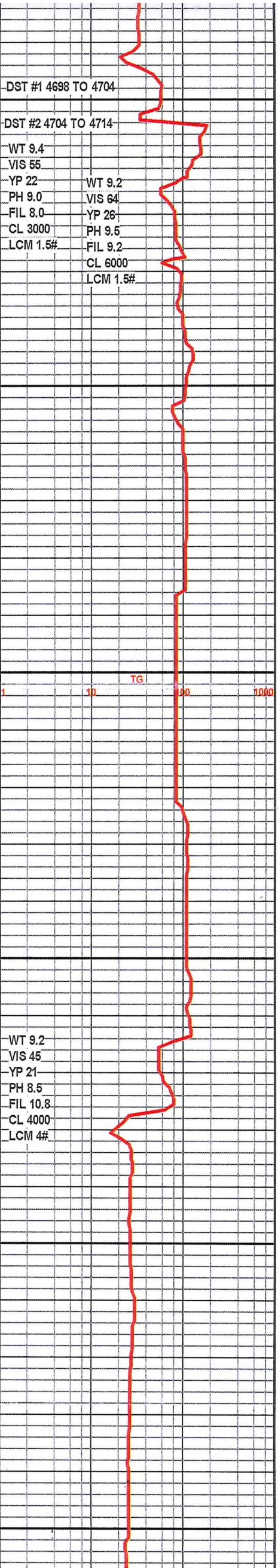
DOL TN ANG F XLN DNS WITH SOME GOOD POR NS WITH CHERT WHT SHARP

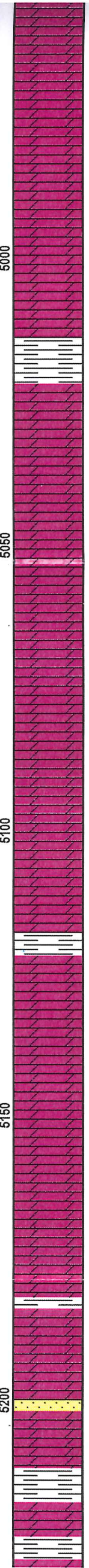
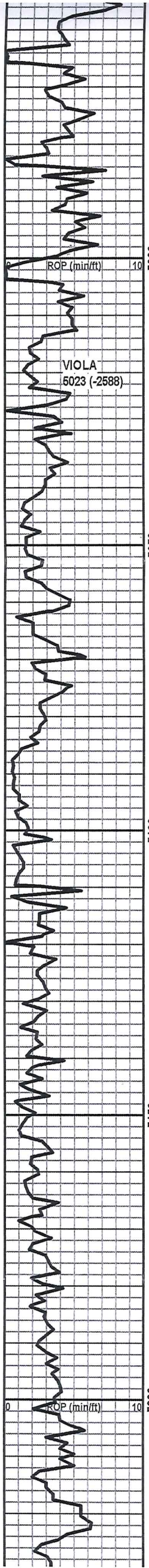
DOL TN TO BRN ANG F XLN DNS WITH CHERT WHT TO LT GRYPANG SHARP

AA WITH LOTS OF CHERT AA

AA WITH DOL WHT TO OFF WHT F XLN DNS F POR NS

DOL TN ANG F XLN DNS WITH CHERT WHT TO OFF WHT SHARP





MOSTLY DOL TN F XLN DNS

AA WITH DOL TN TO BRN LIMLY VUGGYF XLN NS WITH SH GRY TO GRN FIRM

DOL TN ANG F XLN DNS NS

DOL AA WITH SH DRK GRY TO BLK FIRM

DOL BRN ANG F-M XLN DNS WITH SH AA

SH LT GRY TO LT GRN TO BLK FIRM

DOL CRM TO TN ANG F XLN DNS WITH P POR NS WITH CHERT WHT V HD SHARP

DOL AA WITH MORE CHERT SOME TN

AA WITH ONE PICES OF CHERT WHT SHARP WITH OIL STAIN SOME DEAD OIL NO FREE OIL

DOL BRN ANG F-M XLN DNS WITH SOME G-F POR NS

DOL BRN TO TN ANG F-M XLN DNS NS

DOL AA WITH SH DRK GRY TO BLK FIRM

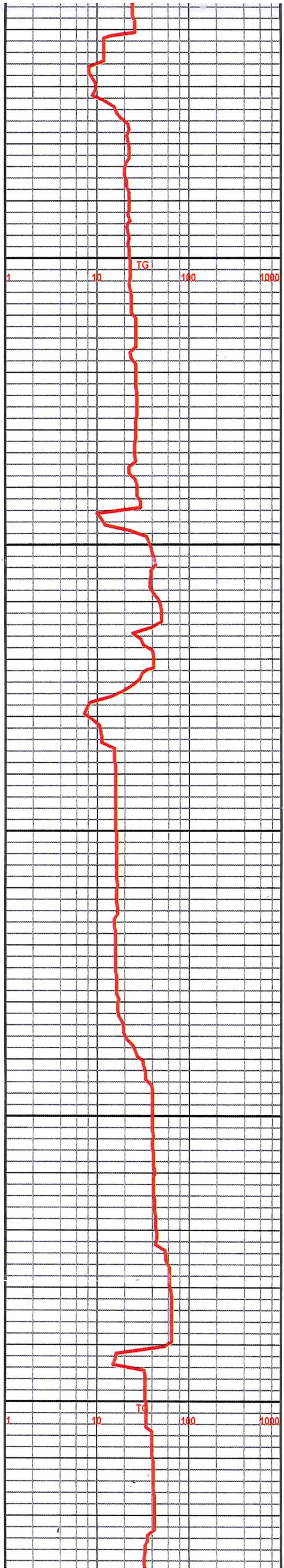
DOL TN ANG F-M XLN DNS NS

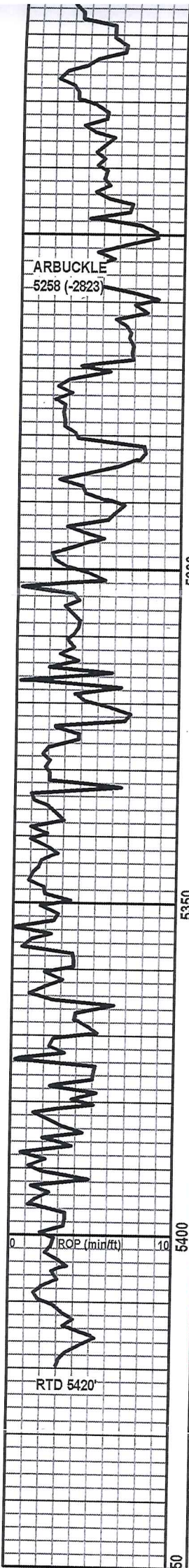
DOL AA WITH TR PYRITE WITH SH GRYGRN TO BLK FIRM

DOL BRN ANG F-M XLN DNS

DOL AA WITH TR SS F-M GR TRANS TO CLEAR TIGHT NS WITH SH DRK GRY TO BLK FIRM

DOL BRN TO DRK BRN ANG F XLN DNS NS WITH SH GRN FIRM





DOL AA WITH DOL TN ANG F-M
XLN DNS WITH SH DRK GRY TO
BLK FIRM

DOL BRN ANG F XLN DNS NS

DOL BRN AA

DOL TN TO BRN ANG F XLN
DNS WITH CHERT TN TO BRN
SHARP

DOL BRN TO LT BRN ANG F-M
XLN DNS SOME F POR NS

DOL TN ANG F-M XLN DNS NS

DOL TN TO LT BRN ANG F-M
XLN DNS SOME F POR NS

DOL AA WITH DOL BRN FXN
DNS TO HD NS

