

# Sandridge Energy

Anita 3420 1-13H (Final)

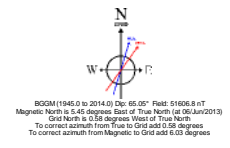
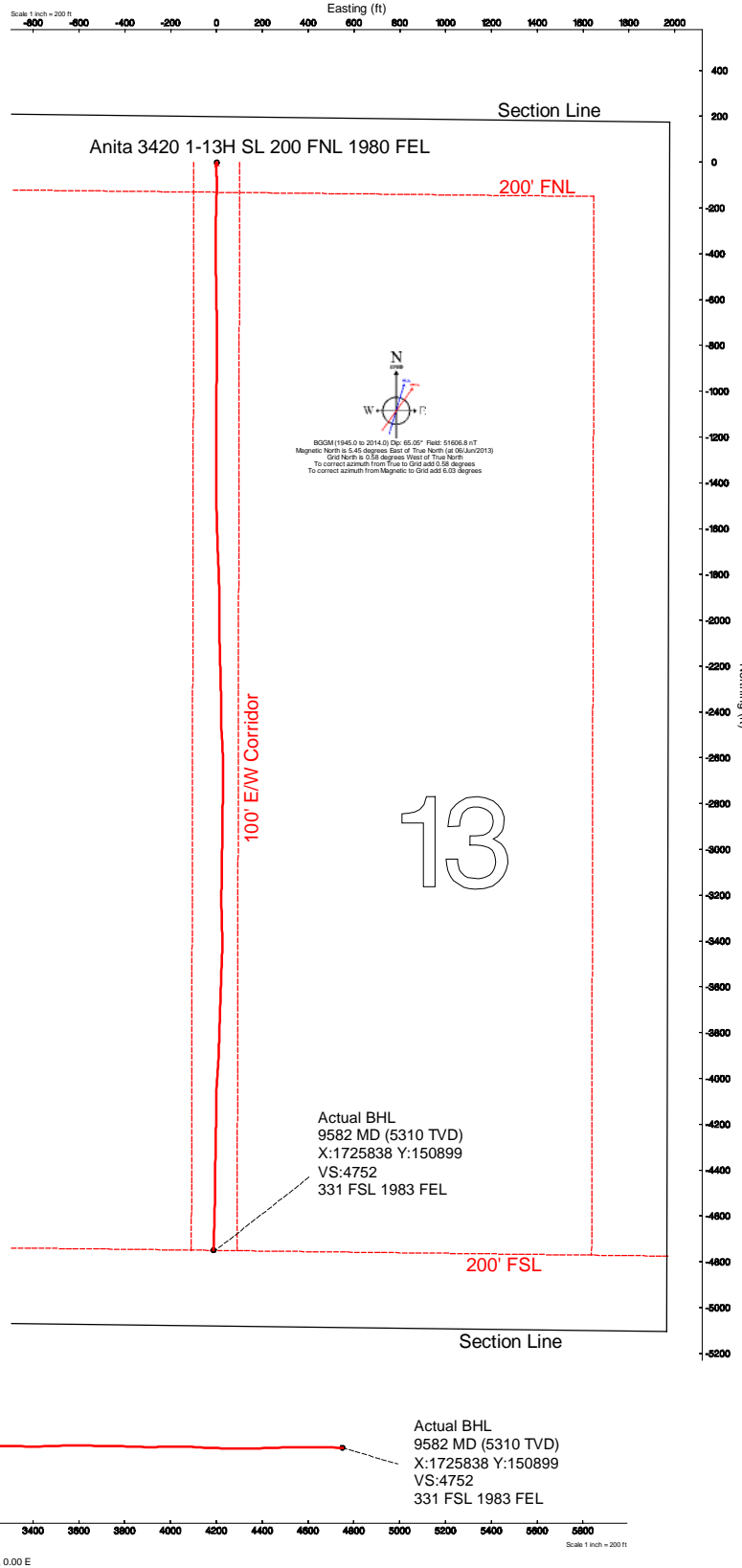
Anita 3420 1-13H SL 200 FNL 1980 FEL

Comanche County, Kansas (Sandridge Energy) NAD27 / Grid

Plot reference wellpath is Plan 7						
True vertical depths are referenced to Lariat 38 (RKB)	Grid System: NAD27 / Lambert Kansas SP, Southern Zone (1502), US feet					
Measured depths are referenced to Lariat 38 (RKB)	North Reference: Grid north					
Lariat 38 (RKB) to Mean Sea Level: 1791 feet	Scale: True distance					
Mean Sea Level to Mud line (At Slot: Anita 3420 1-13H SL 200 FNL 1980 FEL): -1771 feet	Depths are in feet					
Coordinates are in feet referenced to Slot	Created by: bouglac on 05/06/2013					
Location Information						
Facility Name	Grid East (US ft)	Grid North (US ft)	Latitude	Longitude		
Anita 3420 1-13H Sec 13-34S-20W	1725862.000	155651.000	37°05'25.238"N	99°26'23.380"W		
Slot	Local N (ft)	Local E (ft)	Grid East (US ft)	Grid North (US ft)	Latitude	Longitude
Anita 3420 1-13H SL 200 FNL 1980 FEL	0.00	0.00	1725862.000	155651.000	37°05'25.238"N	99°26'23.380"W
Lariat 38 (RKB) to Mud line (At Slot: Anita 3420 1-13H SL 200 FNL 1980 FEL)						208
Mean Sea Level to Mud line (At Slot: Anita 3420 1-13H SL 200 FNL 1980 FEL)						-1771ft
Lariat 38 (RKB) to Mean Sea Level						-179ft



**Actual BHL**  
**9582' MD (5310' TVD)**  
**X:1725838 Y:150899**  
**VS:4752**  
**331' FSL 1983' FEL**





## Actual Wellpath Report

Sandridge Anita 3420 1-13H\_Final Surveys.  
Page n of nn



REFERENCE WELLPATH IDENTIFICATION			
Operator	Sandridge Energy	Slot	Anita 3420 1-13H SL 200 FNL 1980 FEL
Area	Kansas	Well	Subject
Field	Comanche County, Kansas (Sandridge Energy) NAD27 / Grid	Wellbore	Anita 3420 1-13H Actual
Facility	Anita 3420 1-13H Sec 13-34S-20W		

REPORT SETUP INFORMATION			
Projection System	NAD27 / Lambert Kansas SP, Southern Zone (1502), US feet		
North Reference	Grid	Software System	WellArchitect™ 3.0.0
Convergence at slot	0.58° West	User	Adammic
Scale	1.00004	Report Generated	08/Jul/2013 at 2:40:03 PM
Wellbore last revised	06-06-2013	Database/Source file	intokcapp01

WELLPATH LOCATION						
	Local coordinates		Grid coordinates		Geographic coordinates	
	North[ft]	East[ft]	Easting[US ft]	Northing[US ft]	Latitude	Longitude
Slot Location	0.00	0.00	1725852.00	155651.00	37°05'25.238"N	99°26'23.380"W
Facility Reference Pt			1725852.00	155651.00	37°05'25.238"N	99°26'23.380"W
Field Reference Pt			1773194.47	191302.75	37°11'22.030"N	99°16'42.810"W

WELLPATH DATUM			
Calculation method	Minimum curvature	Lariat 38 (RKB) to Facility Vertical Datum	20.00ft
Horizontal Reference Pt	Slot	Lariat 38 (RKB) to Mean Sea Level	1791.00ft
Vertical Reference Pt	Lariat 38 (RKB)	Lariat 38 (RKB) to Mud Line at Slot (Anita 3420 1-13H SL 200 FNL 1980 FEL)	20.00ft
MD Reference Pt	Lariat 38 (RKB)	Section Origin	N 0.00, E 0.00 ft
Field Vertical Reference	Mean Sea Level	Section Azimuth	180.13°



## Actual Wellpath Report

Sandridge Anita 3420 1-13H\_Final Surveys.  
Page n of nn



REFERENCE WELLPATH IDENTIFICATION			
Operator	Sandridge Energy	Slot	Anita 3420 1-13H SL 200 FNL 1980 FEL
Area	Kansas	Well	Subject
Field	Comanche County, Kansas (Sandridge Energy) NAD27 / Grid	Wellbore	Anita 3420 1-13H Actual
Facility	Anita 3420 1-13H Sec 13-34S-20W		

WELLPATH DATA (130 stations) † = interpolated/extrapolated station										
MD [ft]	Inclination [°]	Azimuth [°]	TVD [ft]	Vert Sect [ft]	North [ft]	East [ft]	Grid East [US ft]	Grid North [US ft]	DLS [°/100ft]	Comments
0.00†	0.000	190.930	0.00	0.00	0.00	0.00	1725852.00	155651.00	0.00	
20.00	0.000	190.930	20.00	0.00	0.00	0.00	1725852.00	155651.00	0.00	
276.00	0.020	190.930	276.00	0.04	-0.04	-0.01	1725851.99	155650.96	0.01	
490.00	0.460	190.930	490.00	0.92	-0.92	-0.18	1725851.82	155650.08	0.21	
676.00	0.720	190.930	675.99	2.81	-2.80	-0.54	1725851.46	155648.20	0.14	
691.00	0.310	190.930	690.99	2.94	-2.94	-0.57	1725851.43	155648.06	2.73	
722.00	0.460	206.180	721.99	3.13	-3.13	-0.64	1725851.36	155647.87	0.58	
814.00	0.290	227.080	813.98	3.62	-3.62	-0.97	1725851.03	155647.38	0.23	
906.00	0.290	201.320	905.98	4.00	-4.00	-1.23	1725850.77	155647.00	0.14	
997.00	0.320	173.300	996.98	4.47	-4.46	-1.28	1725850.72	155646.54	0.17	
1088.00	0.170	199.680	1087.98	4.85	-4.84	-1.30	1725850.70	155646.16	0.20	
1180.00	0.710	226.150	1179.98	5.37	-5.37	-1.75	1725850.25	155645.63	0.61	
1272.00	0.620	204.300	1271.97	6.22	-6.21	-2.37	1725849.63	155644.79	0.29	
1364.00	0.650	169.260	1363.97	7.19	-7.18	-2.48	1725849.52	155643.82	0.42	
1547.00	0.830	124.530	1546.95	8.95	-8.95	-1.19	1725850.81	155642.05	0.32	
1639.00	0.370	108.570	1638.95	9.43	-9.42	-0.36	1725851.64	155641.58	0.53	
1731.00	0.170	235.030	1730.95	9.60	-9.60	-0.19	1725851.81	155641.40	0.53	
1920.00	0.470	287.740	1919.94	9.52	-9.52	-1.16	1725850.84	155641.48	0.21	
2015.00	0.720	231.060	2014.94	9.78	-9.78	-1.99	1725850.01	155641.22	0.64	
2110.00	0.760	171.880	2109.93	10.78	-10.78	-2.37	1725849.63	155640.22	0.77	
2300.00	0.040	222.090	2299.93	12.08	-12.07	-2.24	1725849.76	155638.93	0.39	
2395.00	0.370	26.200	2394.93	11.83	-11.82	-2.12	1725849.88	155639.18	0.43	
2490.00	0.340	30.380	2489.92	11.31	-11.30	-1.85	1725850.15	155639.69	0.04	
2585.00	0.480	331.710	2584.92	10.72	-10.71	-1.89	1725850.11	155640.29	0.44	
2680.00	0.360	291.060	2679.92	10.26	-10.25	-2.36	1725849.64	155640.75	0.33	
2775.00	0.340	346.620	2774.92	9.88	-9.87	-2.70	1725849.30	155641.13	0.34	
2870.00	0.390	280.200	2869.92	9.55	-9.54	-3.09	1725848.91	155641.46	0.42	
2965.00	0.520	261.440	2964.91	9.56	-9.55	-3.83	1725848.17	155641.45	0.21	
3060.00	0.500	264.610	3059.91	9.66	-9.65	-4.67	1725847.33	155641.35	0.04	
3155.00	0.170	87.380	3154.91	9.69	-9.68	-4.94	1725847.06	155641.32	0.71	
3250.00	0.390	19.860	3249.91	9.38	-9.37	-4.69	1725847.31	155641.63	0.38	
3345.00	0.100	325.700	3344.91	9.01	-9.00	-4.63	1725847.37	155642.00	0.36	
3440.00	0.090	83.120	3439.91	8.93	-8.92	-4.60	1725847.40	155642.08	0.17	
3535.00	0.160	47.560	3534.91	8.83	-8.82	-4.43	1725847.57	155642.18	0.11	
3630.00	0.100	279.350	3629.91	8.73	-8.72	-4.41	1725847.59	155642.28	0.25	
3725.00	0.480	62.620	3724.91	8.53	-8.52	-4.14	1725847.86	155642.47	0.59	
3820.00	0.390	337.630	3819.90	8.05	-8.04	-3.91	1725848.09	155642.96	0.62	
3915.00	0.250	321.580	3914.90	7.59	-7.58	-4.16	1725847.84	155643.42	0.17	
4010.00	0.280	303.630	4009.90	7.30	-7.29	-4.48	1725847.52	155643.71	0.09	
4105.00	0.250	139.490	4104.90	7.33	-7.32	-4.54	1725847.46	155643.68	0.55	
4200.00	0.290	139.630	4199.90	7.67	-7.66	-4.25	1725847.75	155643.34	0.04	
4295.00	0.140	146.930	4294.90	7.95	-7.94	-4.03	1725847.97	155643.06	0.16	
4327.00	0.800	180.100	4326.90	8.21	-8.20	-4.01	1725847.99	155642.80	2.15	
4359.00	2.570	176.960	4358.88	9.15	-9.14	-3.97	1725848.03	155641.86	5.54	
4390.00	4.540	178.050	4389.82	11.07	-11.06	-3.90	1725848.10	155639.94	6.36	



## Actual Wellpath Report

Sandridge Anita 3420 1-13H\_Final Surveys.  
Page n of nn



REFERENCE WELLPATH IDENTIFICATION			
Operator	Sandridge Energy	Slot	Anita 3420 1-13H SL 200 FNL 1980 FEL
Area	Kansas	Well	Subject
Field	Comanche County, Kansas (Sandridge Energy) NAD27 / Grid	Wellbore	Anita 3420 1-13H Actual
Facility	Anita 3420 1-13H Sec 13-34S-20W		

WELLPATH DATA (130 stations)											
MD [ft]	Inclination [°]	Azimuth [°]	TVD [ft]	Vert Sect [ft]	North [ft]	East [ft]	Grid East [US ft]	Grid North [US ft]	DLS [°/100ft]	Comments	
4422.00	7.260	175.920	4421.65	14.35	-14.34	-3.71	1725848.29	155636.66	8.53		
4454.00	10.060	175.480	4453.28	19.15	-19.14	-3.34	1725848.66	155631.85	8.75		
4485.00	12.510	175.390	4483.68	25.20	-25.19	-2.86	1725849.14	155625.81	7.90		
4517.00	14.520	176.020	4514.79	32.65	-32.65	-2.30	1725849.70	155618.35	6.30		
4549.00	16.340	176.740	4545.64	41.15	-41.14	-1.77	1725850.23	155609.85	5.72		
4580.00	17.400	177.400	4575.30	50.13	-50.13	-1.31	1725850.69	155600.87	3.47		
4612.00	18.170	176.940	4605.77	59.89	-59.89	-0.83	1725851.17	155591.11	2.45		
4644.00	19.160	177.610	4636.09	70.12	-70.12	-0.34	1725851.66	155580.88	3.17		
4675.00	20.520	178.680	4665.25	80.64	-80.64	-0.01	1725851.99	155570.36	4.54		
4707.00	22.890	179.560	4694.98	92.47	-92.47	0.17	1725852.17	155558.53	7.48		
4739.00	25.810	180.720	4724.13	105.66	-105.66	0.13	1725852.13	155545.34	9.25		
4770.00	28.020	181.160	4751.77	119.69	-119.69	-0.10	1725851.90	155531.31	7.16		
4802.00	29.380	181.960	4779.84	135.05	-135.05	-0.52	1725851.48	155515.94	4.42		
4833.00	31.800	182.160	4806.52	150.82	-150.81	-1.09	1725850.91	155500.18	7.81		
4865.00	34.430	181.920	4833.32	168.29	-168.28	-1.71	1725850.29	155482.71	8.23		
4897.00	37.750	181.220	4859.18	187.13	-187.12	-2.22	1725849.78	155463.87	10.45		
4928.00	40.090	181.220	4883.29	206.60	-206.59	-2.64	1725849.36	155444.40	7.55		
4960.00	42.590	181.480	4907.32	227.73	-227.72	-3.14	1725848.86	155423.27	7.83		
4991.00	45.870	181.320	4929.53	249.34	-249.34	-3.66	1725848.34	155401.65	10.59		
5023.00	48.530	180.530	4951.27	272.82	-272.81	-4.04	1725847.96	155378.18	8.51		
5055.00	50.930	180.260	4971.95	297.23	-297.22	-4.21	1725847.79	155353.76	7.53		
5086.00	53.280	180.320	4990.99	321.69	-321.69	-4.33	1725847.67	155329.30	7.58		
5118.00	55.180	180.270	5009.70	347.66	-347.65	-4.46	1725847.54	155303.34	5.94		
5150.00	56.560	180.120	5027.65	374.15	-374.14	-4.55	1725847.45	155276.85	4.33		
5181.00	58.490	179.550	5044.29	400.30	-400.29	-4.48	1725847.52	155250.70	6.42		
5213.00	59.340	179.740	5060.81	427.70	-427.69	-4.31	1725847.69	155223.29	2.70		
5245.00	59.190	179.460	5077.17	455.20	-455.20	-4.12	1725847.88	155195.79	0.89		
5276.00	59.600	178.970	5092.95	481.88	-481.87	-3.75	1725848.25	155169.11	1.90		
5308.00	59.630	178.650	5109.14	509.48	-509.47	-3.18	1725848.82	155141.51	0.87		
5340.00	59.280	178.900	5125.40	537.03	-537.03	-2.59	1725849.41	155113.95	1.28		
5371.00	59.270	178.780	5141.24	563.67	-563.67	-2.05	1725849.95	155087.31	0.33		
5403.00	59.450	179.210	5157.55	591.20	-591.20	-1.56	1725850.44	155059.78	1.29		
5435.00	61.750	179.060	5173.26	619.07	-619.07	-1.14	1725850.86	155031.91	7.20		
5466.00	65.780	179.210	5186.96	646.87	-646.87	-0.72	1725851.28	155004.11	13.01		
5498.00	69.370	178.750	5199.16	676.44	-676.44	-0.20	1725851.80	154974.54	11.30		
5529.00	72.200	179.230	5209.36	705.70	-705.70	0.32	1725852.32	154945.27	9.25		
5561.00	75.020	179.990	5218.39	736.40	-736.40	0.53	1725852.53	154914.57	9.10		
5593.00	77.810	180.220	5225.91	767.50	-767.50	0.47	1725852.47	154883.47	8.75		
5624.00	80.660	180.620	5231.70	797.95	-797.95	0.25	1725852.25	154853.02	9.28		
5656.00	83.740	180.430	5236.04	829.65	-829.65	-0.05	1725851.95	154821.32	9.64		
5680.00	85.590	180.350	5238.27	853.54	-853.55	-0.21	1725851.79	154797.42	7.72		
5738.00	87.780	180.210	5241.62	911.44	-911.44	-0.49	1725851.51	154739.52	3.78		
5830.00	87.900	180.510	5245.09	1003.38	-1003.38	-1.07	1725850.93	154647.59	0.35		
5921.00	86.290	180.050	5249.70	1094.26	-1094.26	-1.51	1725850.49	154556.70	1.84		
6013.00	86.700	180.090	5255.33	1186.08	-1186.08	-1.62	1725850.38	154464.87	0.45		



## Actual Wellpath Report

Sandridge Anita 3420 1-13H\_Final Surveys.  
Page n of nn



REFERENCE WELLPATH IDENTIFICATION			
Operator	Sandridge Energy	Slot	Anita 3420 1-13H SL 200 FNL 1980 FEL
Area	Kansas	Well	Subject
Field	Comanche County, Kansas (Sandridge Energy) NAD27 / Grid	Wellbore	Anita 3420 1-13H Actual
Facility	Anita 3420 1-13H Sec 13-34S-20W		

WELLPATH DATA (130 stations)										
MD [ft]	Inclination [°]	Azimuth [°]	TVD [ft]	Vert Sect [ft]	North [ft]	East [ft]	Grid East [US ft]	Grid North [US ft]	DLS [°/100ft]	Comments
6104.00	87.780	179.850	5259.71	1276.98	-1276.98	-1.58	1725850.42	154373.98	1.22	
6196.00	88.490	180.430	5262.70	1368.93	-1368.93	-1.80	1725850.20	154282.02	1.00	
6287.00	87.010	179.400	5266.28	1459.85	-1459.85	-1.67	1725850.33	154191.09	1.98	
6380.00	86.490	178.520	5271.55	1552.68	-1552.69	0.02	1725852.02	154098.26	1.10	
6472.00	87.070	178.140	5276.72	1644.49	-1644.50	2.69	1725854.69	154006.44	0.75	
6563.00	86.760	177.600	5281.61	1735.29	-1735.31	6.07	1725858.07	153915.63	0.68	
6655.00	88.240	178.310	5285.63	1827.13	-1827.16	9.35	1725861.35	153823.78	1.78	
6750.00	89.690	179.230	5287.34	1922.08	-1922.12	11.39	1725863.39	153728.81	1.81	
6845.00	89.540	179.990	5287.98	2017.08	-2017.11	12.04	1725864.04	153633.81	0.82	
6940.00	89.230	179.000	5289.00	2112.06	-2112.10	12.87	1725864.87	153538.82	1.09	
7035.00	88.920	177.890	5290.54	2207.01	-2207.05	15.45	1725867.45	153443.87	1.21	
7130.00	91.730	179.110	5290.00	2301.96	-2302.01	17.94	1725869.94	153348.91	3.22	
7225.00	90.710	179.930	5287.97	2396.93	-2396.98	18.73	1725870.73	153253.93	1.38	
7320.00	84.360	176.470	5292.06	2491.72	-2491.78	21.71	1725873.71	153159.13	7.61	
7415.00	86.460	177.780	5299.66	2586.28	-2586.35	26.45	1725878.45	153064.55	2.60	
7510.00	89.140	180.180	5303.31	2681.18	-2681.25	28.14	1725880.14	152969.65	3.79	
7596.00	91.510	181.420	5302.82	2767.16	-2767.23	26.94	1725878.94	152883.66	3.11	
7628.00	91.700	181.770	5301.92	2799.14	-2799.21	26.05	1725878.05	152851.69	1.24	
7723.00	86.980	179.580	5303.02	2894.10	-2894.16	24.93	1725876.93	152756.73	5.48	
7818.00	90.860	181.930	5304.81	2989.05	-2989.11	23.68	1725875.68	152661.78	4.77	
7913.00	89.880	180.640	5304.19	3084.02	-3084.08	21.55	1725873.55	152566.80	1.71	
8008.00	89.940	180.500	5304.34	3179.02	-3179.08	20.60	1725872.60	152471.80	0.16	
8103.00	90.490	179.270	5303.99	3274.02	-3274.07	20.79	1725872.79	152376.80	1.42	
8197.00	88.890	177.640	5304.50	3367.97	-3368.03	23.33	1725875.33	152282.84	2.43	
8292.00	92.310	182.820	5303.50	3462.92	-3462.98	22.95	1725874.95	152187.89	6.53	
8388.00	90.460	181.830	5301.18	3558.81	-3558.87	19.06	1725871.06	152092.00	2.19	
8482.00	89.140	181.820	5301.51	3652.77	-3652.82	16.06	1725868.06	151998.05	1.40	
8577.00	89.080	181.890	5302.98	3747.72	-3747.76	12.99	1725864.99	151903.10	0.10	
8672.00	87.560	181.720	5305.77	3842.63	-3842.67	10.00	1725862.00	151808.19	1.61	
8767.00	90.890	183.240	5307.05	3937.53	-3937.55	5.89	1725857.89	151713.30	3.85	
8862.00	90.590	183.880	5305.83	4032.35	-4032.36	-0.01	1725851.99	151618.49	0.74	
8957.00	86.270	179.540	5308.43	4127.23	-4127.24	-2.85	1725849.15	151523.61	6.44	
9052.00	88.920	181.250	5312.42	4222.14	-4222.14	-3.50	1725848.50	151428.70	3.32	
9147.00	89.720	181.040	5313.54	4317.11	-4317.11	-5.40	1725846.60	151333.73	0.87	
9242.00	91.970	180.340	5312.14	4412.09	-4412.09	-6.55	1725845.45	151238.75	2.48	
9337.00	92.280	181.110	5308.62	4507.02	-4507.01	-7.75	1725844.25	151143.82	0.87	
9432.00	89.380	181.390	5307.25	4601.98	-4601.97	-9.82	1725842.18	151048.86	3.07	
9527.00	88.710	181.720	5308.83	4696.94	-4696.92	-12.40	1725839.60	150953.90	0.79	
9539.00	88.680	182.010	5309.10	4708.93	-4708.91	-12.79	1725839.21	150941.91	2.43	
9582.00	88.680	182.010	5310.09	4751.90	-4751.88	-14.30	1725837.70	150898.95	0.00	Actual BHL 9582 MD (5310 TVD) X:1725838 Y:150899 VS:4752 331 FSL 1983 FEL



**Actual Wellpath Report**  
Sandridge Anita 3420 1-13H\_Final Surveys.  
Page n of nn



REFERENCE WELLPATH IDENTIFICATION			
Operator	Sandridge Energy	Slot	Anita 3420 1-13H SL 200 FNL 1980 FEL
Area	Kansas	Well	Subject
Field	Comanche County, Kansas (Sandridge Energy) NAD27 / Grid	Wellbore	Anita 3420 1-13H Actual
Facility	Anita 3420 1-13H Sec 13-34S-20W		

TARGETS									
Name	MD [ft]	TVD [ft]	North [ft]	East [ft]	Grid East [US ft]	Grid North [US ft]	Latitude	Longitude	Shape
PBHL 330 FSL 1980 FEL		5316.60	-4752.82	-11.00	1725841.00	150898.00	37°04'38.245"N	99°26'22.925"W	point

WELLPATH COMPOSITION - Ref Wellbore: Anita 3420 1-13H Actual					Ref Wellpath: AWP (Final)	
Start MD [ft]	End MD [ft]	Positional Uncertainty Model	Log Name/Comment	Wellbore		
20.00	676.00	EMS (Standard)	EMS	Anita 3420 1-13H Actual		
676.00	9539.00	Autotrak Short	Inteq MWD	Anita 3420 1-13H Actual		
9539.00	9582.00	Blind Drilling (std)	Projection to bit	Anita 3420 1-13H Actual		