



**TRILOBITE
TESTING, INC.**

DRILL STEM TEST REPORT

Samuel Gary Jr. & Associates

31-14s-16w-Ellis

1515 Wynkoop
Suite 700
Denver, CO. 80202
ATTN: Chris Mitchell

Pfeifer #1-31

Job Ticket: 52224

DST#: 2

Test Start: 2013.04.17 @ 19:28:45

GENERAL INFORMATION:

Formation: **D-G**
 Deviated: No Whipstock: 0.00 ft (KB)
 Time Tool Opened: 21:43:30
 Time Test Ended: 04:18:15
 Interval: **3243.00 ft (KB) To 3278.00 ft (KB) (TVD)**
 Total Depth: 3278.00 ft (KB) (TVD)
 Hole Diameter: 7.80 inches Hole Condition: Good
 Test Type: Conventional Bottom Hole (Reset)
 Tester: Jason McLemore
 Unit No: 54
 Reference Elevations: 1930.00 ft (KB)
 1922.00 ft (CF)
 KB to GR/CF: 8.00 ft

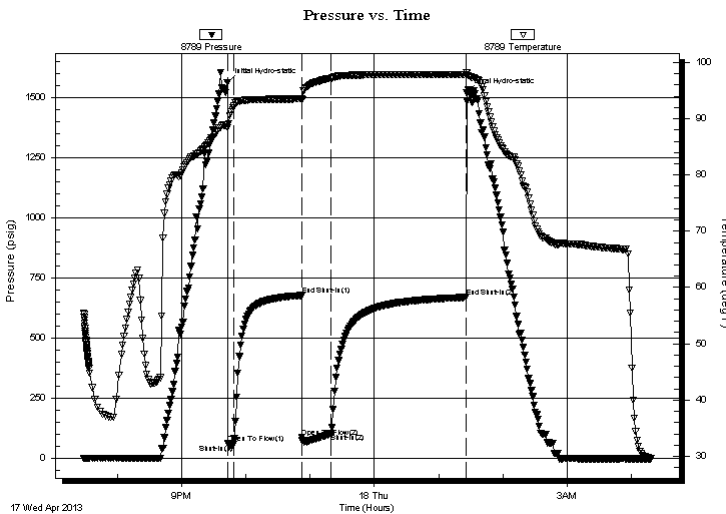
Serial #: 8789

Inside

Press @ Run Depth: 101.80 psig @ 3245.00 ft (KB) Capacity: 8000.00 psig
 Start Date: 2013.04.17 End Date: 2013.04.18 Last Calib.: 2013.04.18
 Start Time: 19:28:47 End Time: 04:18:15 Time On Btm: 2013.04.17 @ 21:43:00
 Time Off Btm: 2013.04.18 @ 01:26:00

TEST COMMENT: IFP-Good Blow , BOB in 2 Min.
 ISI-Dead
 FFP-Strong, BOB in 1 Min.
 FGS-Blow back BOB in 15 Min.

PRESSURE SUMMARY



Time (Min.)	Pressure (psig)	Temp (deg F)	Annotation
0	1561.87	89.00	Initial Hydro-static
1	60.96	88.37	Open To Flow (1)
6	57.58	92.00	Shut-In(1)
69	677.04	93.53	End Shut-In(1)
70	86.05	93.31	Open To Flow (2)
97	101.80	97.17	Shut-In(2)
223	669.03	97.79	End Shut-In(2)
223	1518.19	98.22	Final Hydro-static

Recovery

Length (ft)	Description	Volume (bbl)
180.00	Frothy Oil-50%G-50%O	2.52
30.00	Muddy Water-90%W-10%M	0.42
0.00	930' Gas In Pipe	0.00

Gas Rates

	Choke (inches)	Pressure (psig)	Gas Rate (Mcf/d)

* Recovery from multiple tests



**TRILOBITE
TESTING, INC.**

DRILL STEM TEST REPORT

FLUID SUMMARY

Samuel Gary Jr. & Associates

31-14s-16w-Ellis

1515 Wynkoop
Suite 700
Denver, CO. 80202
ATTN: Chris Mitchell

Pfeifer #1-31

Job Ticket: 52224

DST#: 2

Test Start: 2013.04.17 @ 19:28:45

Mud and Cushion Information

Mud Type: Gel Chem

Cushion Type:

Oil API:

28 deg API

Mud Weight: 9.00 lb/gal

Cushion Length:

ft

Water Salinity:

75000 ppm

Viscosity: 51.00 sec/qt

Cushion Volume:

bbbl

Water Loss: 6.79 in³

Gas Cushion Type:

Resistivity: ohm.m

Gas Cushion Pressure:

psig

Salinity: 5500.00 ppm

Filter Cake: inches

Recovery Information

Recovery Table

Length ft	Description	Volume bbl
180.00	Frothy Oil-50%G-50%O	2.525
30.00	Muddy Water-90%W-10%M	0.421
0.00	930' Gas In Pipe	0.000

Total Length: 210.00 ft Total Volume: 2.946 bbl

Num Fluid Samples: 0

Num Gas Bombs: 0

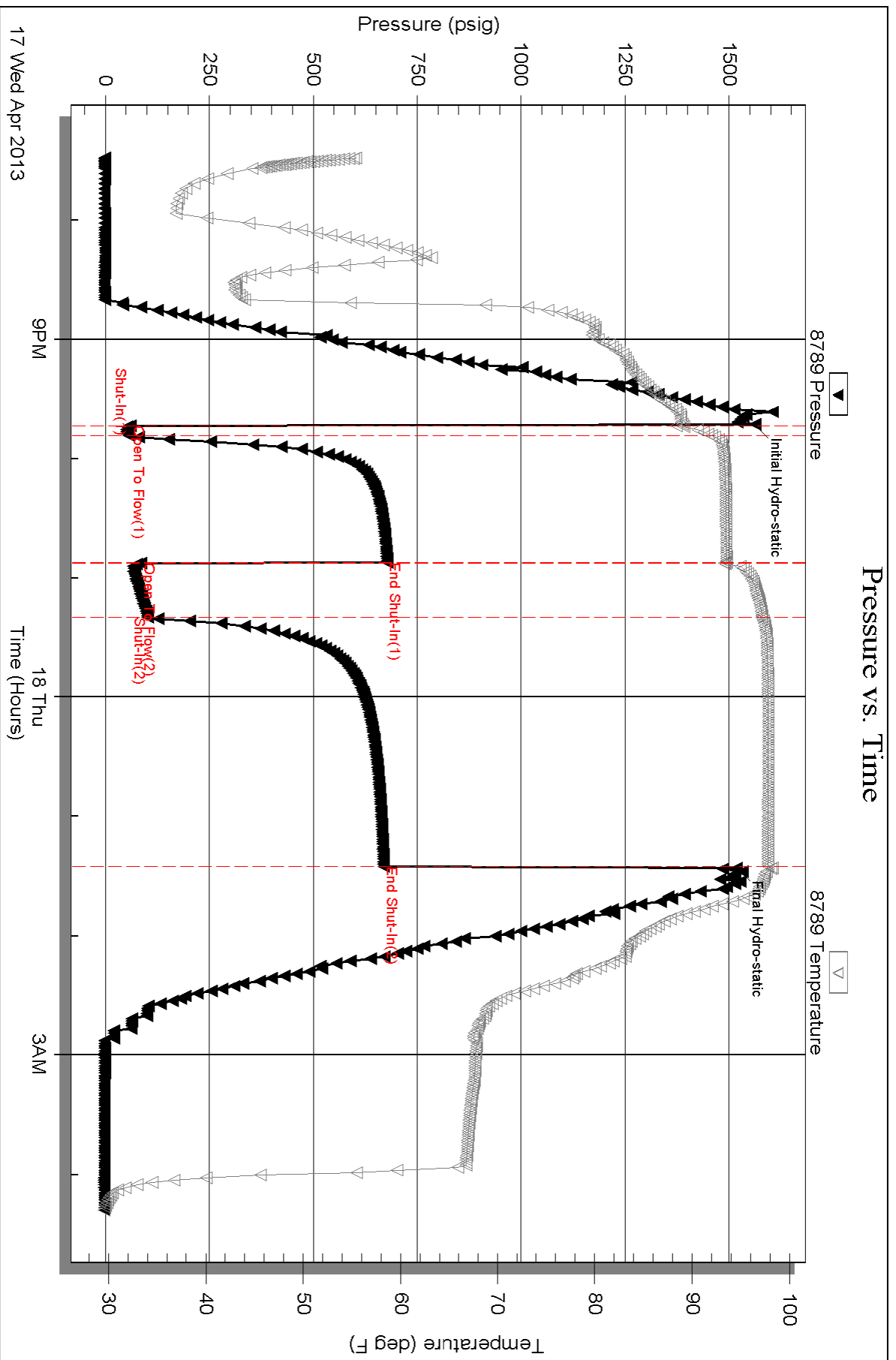
Serial #:

Laboratory Name:

Laboratory Location:

Recovery Comments: Sampler:600#,1500ml Oil-500ml Water

Pressure vs. Time



Serial #: 6668

Fluid

Samuel Gary Jr. & Associates

Pfeifer #1-31

DST Test Number: 2

