



TRILOBITE TESTING, INC

DRILL STEM TEST REPORT

Sam Gary Jr. and Associates Inc.

26-4s-23w Norton KS

1515 Wynkoop STE 700
Denver, CO, 80202

Sproul #1-26

Job Ticket: 48525

DST#: 2

ATTN: Clayton Camozzi

Test Start: 2013.04.18 @ 16:21:00

GENERAL INFORMATION:

Formation: **Reagan Sand**

Deviated: No Whipstock: ft (KB)

Time Tool Opened: 18:21:00

Time Test Ended: 01:29:00

Test Type: Conventional Bottom Hole (Reset)

Tester: Cody Bloedorn/Daniel

Unit No: 67

Interval: 3682.00 ft (KB) To 3723.00 ft (KB) (TVD)

Reference Elevations: 2336.00 ft (KB)

Total Depth: 3466.00 ft (KB) (TVD)

2328.00 ft (CF)

Hole Diameter: 7.88 inches Hole Condition: Fair

KB to GR/CF: 8.00 ft

Serial #: 8679 Inside

Press @ Run Depth: 125.70 psig @ 3718.00 ft (KB)

Capacity: 8000.00 psig

Start Date: 2013.04.18

End Date:

2013.04.19

Last Calib.:

2013.04.19

Start Time: 16:21:01

End Time:

01:29:00

Time On Btm:

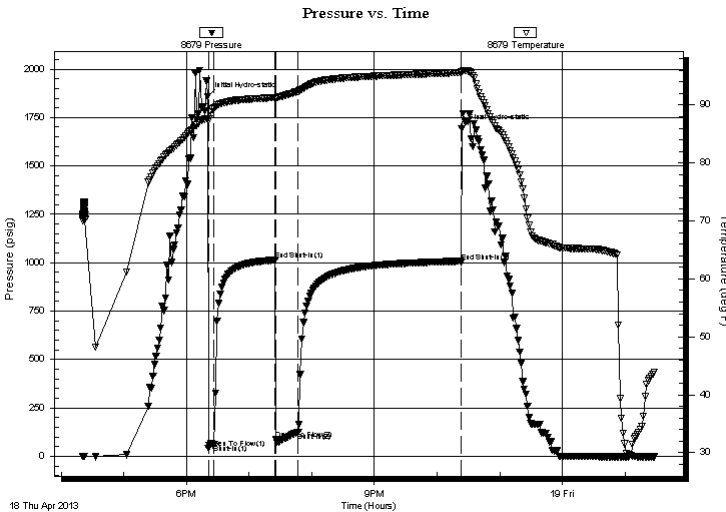
2013.04.18 @ 18:20:30

Time Off Btm:

2013.04.18 @ 22:23:30

TEST COMMENT: 05 - IFP- B.O.B in 5 Minutes
60 - ISF- Surface return
25 - FFP- B.O.B. in 4 Minutes
150 - FSF- 3/4" return

PRESSURE SUMMARY



Time (Min.)	Pressure (psig)	Temp (deg F)	Annotation
0	1859.50	87.70	Initial Hydro-static
1	42.48	87.29	Open To Flow (1)
6	61.41	89.49	Shut-In(1)
65	1013.59	91.29	End Shut-In(1)
65	90.19	91.05	Open To Flow (2)
87	125.70	92.36	Shut-In(2)
243	1002.07	95.62	End Shut-In(2)
243	1692.45	95.79	Final Hydro-static

Recovery

Length (ft)	Description	Volume (bbl)
62.00	GMCO - 10% g / 70% o / 20% m	0.61
124.00	GHOCM - 10% g / 40% o / 50% m	1.74
124.00	Free oil.	1.74

Gas Rates

	Choke (inches)	Pressure (psig)	Gas Rate (Mcf/d)

* Recovery from multiple tests



**TRILOBITE
TESTING, INC**

DRILL STEM TEST REPORT

FLUID SUMMARY

Sam Gary Jr. and Associates Inc.

26-4s-23w Norton KS

1515 Wynkoop STE 700
Denver, CO, 80202

Sproul #1-26

Job Ticket: 48525

DST#: 2

ATTN: Clayton Camozzi

Test Start: 2013.04.18 @ 16:21:00

Mud and Cushion Information

Mud Type: Gel Chem

Cushion Type:

Oil API:

26 deg API

Mud Weight: 9.00 lb/gal

Cushion Length:

ft

Water Salinity:

ppm

Viscosity: 59.00 sec/qt

Cushion Volume:

bbbl

Water Loss: 6.40 in³

Gas Cushion Type:

Resistivity: ohm.m

Gas Cushion Pressure:

psig

Salinity: 800.00 ppm

Filter Cake: inches

Recovery Information

Recovery Table

Length ft	Description	Volume bbbl
62.00	GMCO - 10% g / 70% o / 20% m	0.606
124.00	GHOCM - 10% g / 40% o / 50% m	1.739
124.00	Free oil.	1.739

Total Length: 310.00 ft Total Volume: 4.084 bbl

Num Fluid Samples: 0

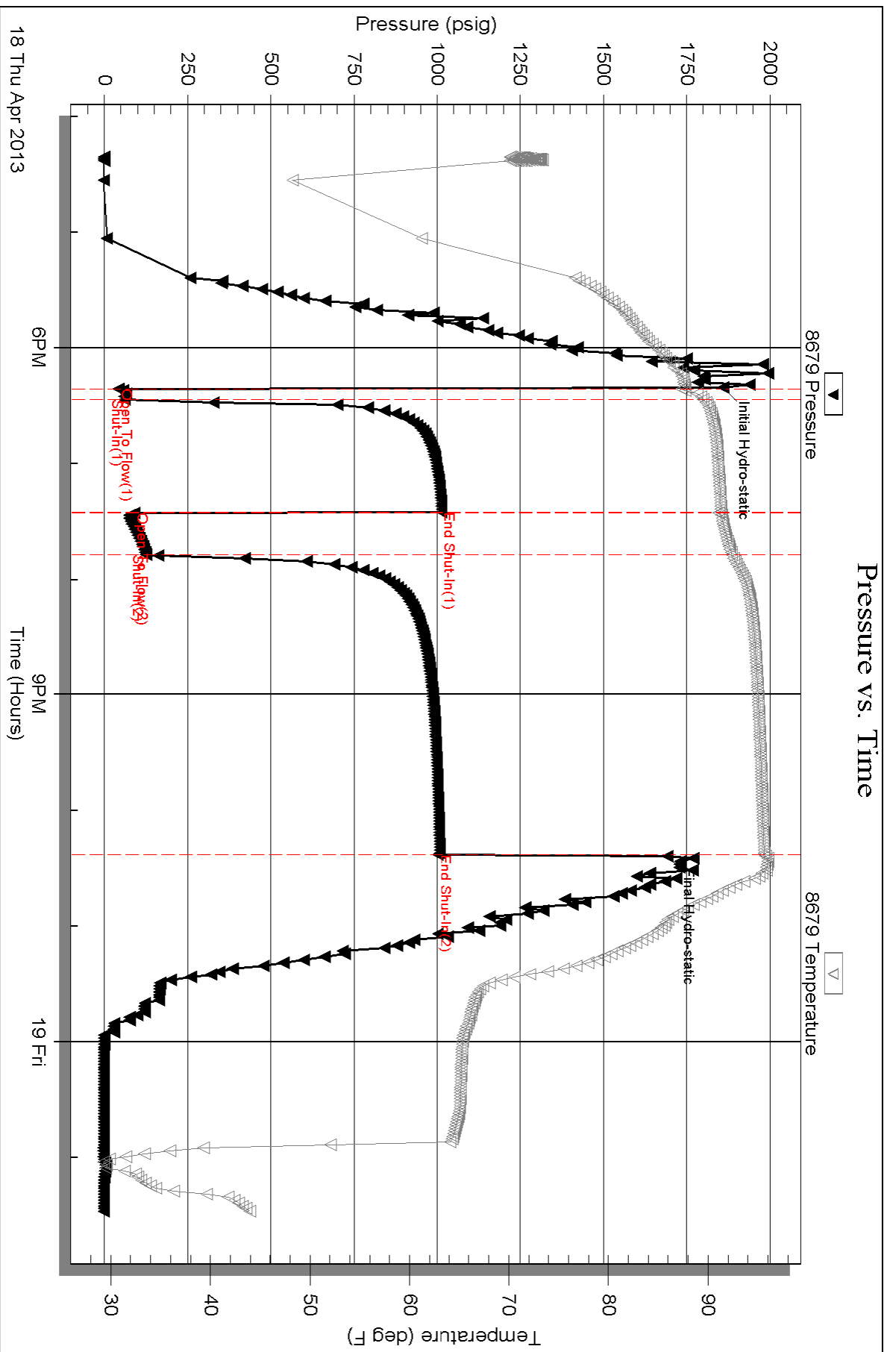
Num Gas Bombs: 0

Serial #:

Laboratory Name:

Laboratory Location:

Recovery Comments: G=24 @ 40 degrees = 26



Serial #: 8736

Fluid

Sam Gary Jr. and Associates Inc.

Sprout #1-26

DST Test Number: 2

