

Thomas J. Funk
Petroleum Geologist

**Geologists' Report
Drilling Time and Sample Log**

OPERATOR Murfin Drilling Co., Inc
LEASE Racette
FIELD Field Ext
LOCATION 335' FNL & 1100' FEL
SEC. 12
COUNTY Logan

ELEVATION
KB 3052'
DF
GL 3041'
Measurements Are All From **KB**

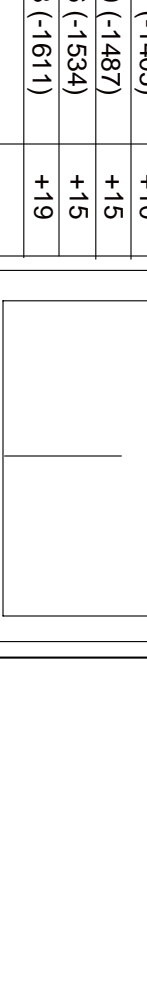
CONTRACTOR Murfin Drig Co
COMM 4/10/13
RTD 4/76'
SAMPLES SAVED FROM 3650'
DRILLING TIME KEPT FROM 3650'
SAMPLES EXAMINED FROM 3650'

CASING RECORD
SURFACE
8 5/8" at 217' KB w/175sx
PRODUCTION

NEOLOGICAL SUPERVISION FROM 3700' TO 4720'
MUD/DP 3200
TYPE MUD Chemical

FORMATION	LOG TOP DATUM	SAMPLE TOP DATUM	STRUCT COMP
Anyndite	2522 (+430)	2522 (+430)	+3
B/Anyndite	2546 (+308)	2545 (+307)	+4
Topeka	3757 (-705)	3755 (-703)	+1
Heebner Sh	3979 (-927)	3978 (-926)	+8
Lansing	4028 (-976)	4026 (-974)	+6
Murde Creek	4173 (-1121)	4172 (-1120)	+9
Stark Sh	4259 (-1207)	4258 (-1206)	+8
Marmaton	4373 (-1321)	4372 (-1320)	+8
Pawnee	4457 (-1405)	4457 (-1405)	+10
Cherokee Sh	4541 (-1489)	4539 (-1487)	+15
Johnson Zone	4584 (-1532)	4583 (-1531)	+15
Mississippi	4664 (-1612)	4663 (-1611)	+19

ELECTRICAL SURVEYS	Log-Tech	DIL	MEL
		DUCP	BHCS

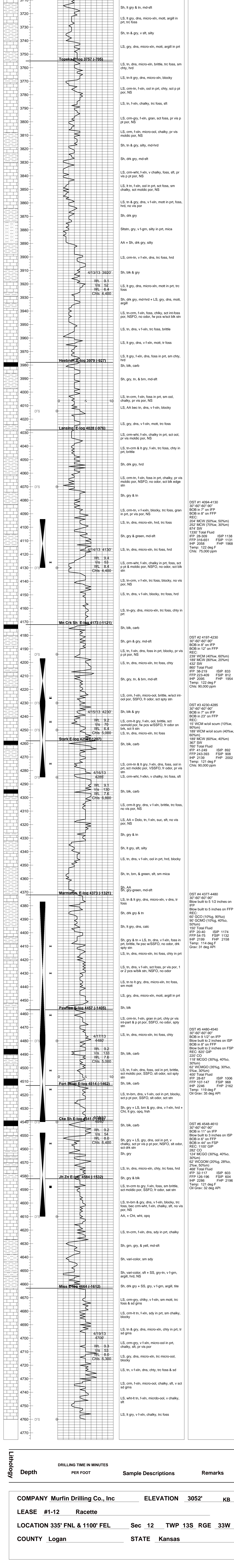


REFERENCE WELL FOR STRUCTURAL COMPARISON: Murfin Drig Co. #3-1 DFT
335' FNL & 1100' FEL sec. 1-13S-33W, Logan Co. KS

Date	Depth	NO. Size	Make	Type	Depth Out	Feet	Hours
4/10/13	Stud	1	12 1/4 GMS	RR	228	228	3
4/11/13	840'	2	7 7/8" HTC	DP906F	3650	3422	29
4/12/13	3020'	2	7 7/8" HTC	DP906F	3650	3422	29
4/13/13	3785'	3	7 7/8" HTC	GX22s	4760	1110	59
4/14/13	4130'						
4/15/13	4230'						
4/16/13	4285'						
4/17/13	4480'						
4/18/13	4540'						
4/19/13	4620'						
4/20/13	4760' TD						

Remarks And Recommendations:
Based upon log analysis, DST recovery, and sample examination, it was decided to run production casing to further evaluate the #1-12 Racette.
Thomas Funk
Petroleum Geologist

LEGEND



COMPANY Murfin Drilling Co., Inc	ELEVATION 3052'	KB
LEASE #1-12 Racette		
LOCATION 335' FNL & 1100' FEL	Sec 12	TWP 13S RGE 33W
COUNTY Logan	STATE Kansas	