

KEVIN L. KESSLER
CONSULTING PETROLEUM GEOLOGIST
(316) 522-7338

OPERATOR : MULL DRILLING COMPANY, INC.
LEASE : BEAMER WELL # : 2 - 8
LOCATION : 1550' FSL & 1101' FWL
SEC: 08 TWP : 16 S RGE : 23 W
COUNTY : NESS STATE : KANSAS

ELEVATION
KB : 2503
GL : 2498
MEASUREMENTS FROM
KB

CONTRACTOR : WW DRILLING RIG # 10
COMM : 04 / 24 / 2013 COMP : 05 / 01 / 2013
RTD : 4600 LOG TD : 4600
SAMPLES SAVED FROM : 3700 TO : RTD
GEOLOGICAL SUPERVISION FROM : 3600 TO : RTD
MUD UP : 3500 TYPE MUD : CHEMICAL

CASING RECORD
SURFACE :
8 5/8" @ 222'
PRODUCTION :
5 1/2" @ 4600'

ELECTRICAL SURVEYS :

FORMATION	TOP	LOG	DATUM	TOP	SAMPLE	DATUM	STRUCT. COMP.
HEEBNER	3856		- 1353	3856		- 1353	+ 06
LANSING	3898		- 1395	3898		- 1395	+ 05
STARK	4158		- 1655	4158		- 1655	+ 02
BASE/ KC	4202		- 1699	4202		- 1699	+ 03
FORT SCOTT	4374		- 1871	4374		- 1871	+ 07
CHEROKEE	4399		- 1896	4399		- 1896	+ 08
MISSISSIPPI	4460		- 1957	4460		- 1957	+ 37

REFERENCE WELL FOR STRUCTURAL COMPARISON :

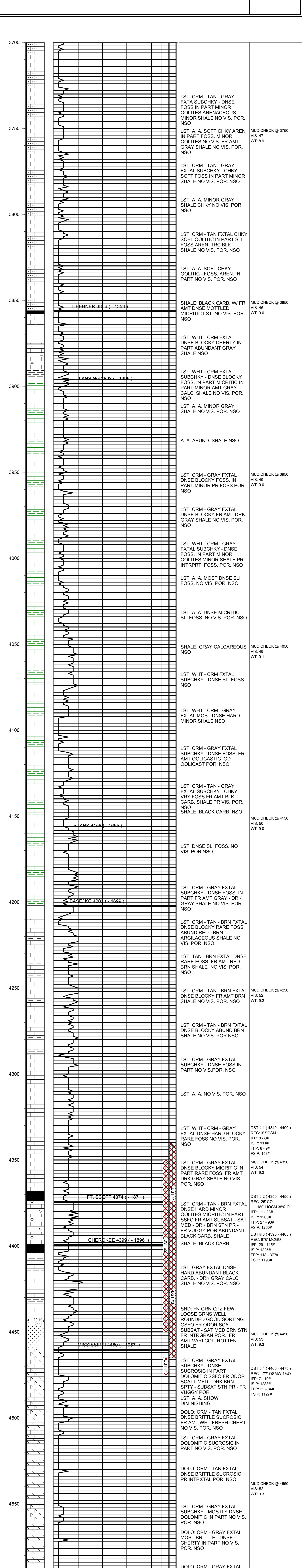
GRAND MESA # 1 - 9 BEAMER SEC 08 - T 16 S - R 23 W NESS COUNTY KANSAS

CDL/CNL

DIL

MICRO

SONIC



MUD CHECK @ 3750
 VIS: 47
 WT: 8.9

MUD CHECK @ 3850
 VIS: 46
 WT: 9.0

MUD CHECK @ 3950
 VIS: 49
 WT: 9.0

MUD CHECK @ 4050
 VIS: 49
 WT: 9.1

MUD CHECK @ 4150
 VIS: 50
 WT: 9.0

MUD CHECK @ 4250
 VIS: 52
 WT: 9.2

MUD CHECK @ 4350
 VIS: 54
 WT: 9.2

MUD CHECK @ 4450
 VIS: 52
 WT: 9.3

MUD CHECK @ 4550
 VIS: 52
 WT: 9.3

MUD CHECK @ 4600
 VIS: 53
 WT: 9.3

MUD CHECK @ 4550
 VIS: 52
 WT: 9.3

MUD CHECK @ 4550
 VIS: 52
 WT: 9.3

MUD CHECK @ 4550
 VIS: 52
 WT: 9.3

MUD CHECK @ 4550
 VIS: 52
 WT: 9.3

MUD CHECK @ 4550
 VIS: 52
 WT: 9.3

MUD CHECK @ 4550
 VIS: 52
 WT: 9.3

MUD CHECK @ 4550
 VIS: 52
 WT: 9.3

MUD CHECK @ 4550
 VIS: 52
 WT: 9.3

MUD CHECK @ 4550
 VIS: 52
 WT: 9.3

MUD CHECK @ 4550
 VIS: 52
 WT: 9.3

MUD CHECK @ 4550
 VIS: 52
 WT: 9.3

MUD CHECK @ 4550
 VIS: 52
 WT: 9.3

MUD CHECK @ 4550
 VIS: 52
 WT: 9.3

MUD CHECK @ 4550
 VIS: 52
 WT: 9.3

MUD CHECK @ 4550
 VIS: 52
 WT: 9.3

MUD CHECK @ 4550
 VIS: 52
 WT: 9.3

MUD CHECK @ 4550
 VIS: 52
 WT: 9.3

MUD CHECK @ 4550
 VIS: 52
 WT: 9.3

MUD CHECK @ 4550
 VIS: 52
 WT: 9.3

MUD CHECK @ 4550
 VIS: 52
 WT: 9.3

MUD CHECK @ 4550
 VIS: 52
 WT: 9.3

MUD CHECK @ 4550
 VIS: 52
 WT: 9.3

MUD CHECK @ 4550
 VIS: 52
 WT: 9.3

MUD CHECK @ 4550
 VIS: 52
 WT: 9.3

MUD CHECK @ 4550
 VIS: 52
 WT: 9.3

MUD CHECK @ 4550
 VIS: 52
 WT: 9.3

MUD CHECK @ 4550
 VIS: 52
 WT: 9.3

MUD CHECK @ 4550
 VIS: 52
 WT: 9.3

MUD CHECK @ 4550
 VIS: 52
 WT: 9.3

MUD CHECK @ 4550
 VIS: 52
 WT: 9.3

MUD CHECK @ 4550
 VIS: 52
 WT: 9.3

MUD CHECK @ 4550
 VIS: 52
 WT: 9.3

MUD CHECK @ 4550
 VIS: 52
 WT: 9.3

MUD CHECK @ 4550
 VIS: 52
 WT: 9.3

MUD CHECK @ 4550
 VIS: 52
 WT: 9.3

MUD CHECK @ 4550
 VIS: 52
 WT: 9.3

MUD CHECK @ 4550
 VIS: 52
 WT: 9.3

MUD CHECK @ 4550
 VIS: 52
 WT: 9.3

MUD CHECK @ 4550
 VIS: 52
 WT: 9.3

MUD CHECK @ 4550
 VIS: 52
 WT: 9.3

MUD CHECK @ 4550
 VIS: 52
 WT: 9.3

MUD CHECK @ 4550
 VIS: 52
 WT: 9.3

MUD CHECK @ 4550
 VIS: 52
 WT: 9.3

MUD CHECK @ 4550
 VIS: 52
 WT: 9.3

MUD CHECK @ 4550
 VIS: 52
 WT: 9.3

MUD CHECK @ 4550
 VIS: 52
 WT: 9.3

MUD CHECK @ 4550
 VIS: 52
 WT: 9.3

MUD CHECK @ 4550
 VIS: 52
 WT: 9.3

MUD CHECK @ 4550
 VIS: 52
 WT: 9.3

MUD CHECK @ 4550
 VIS: 52
 WT: 9.3

MUD CHECK @ 4550
 VIS: 52
 WT: 9.3

MUD CHECK @ 4550
 VIS: 52
 WT: 9.3

MUD CHECK @ 4550
 VIS: 52
 WT: 9.3

MUD CHECK @ 4550
 VIS: 52
 WT: 9.3

MUD CHECK @ 4550
 VIS: 52
 WT: 9.3

MUD CHECK @ 4550
 VIS: 52
 WT: 9.3

MUD CHECK @ 4550
 VIS: 52
 WT: 9.3

MUD CHECK @ 4550
 VIS: 52
 WT: 9.3

MUD CHECK @ 4550
 VIS: 52
 WT: 9.3

MUD CHECK @ 4550
 VIS: 52
 WT: 9.3

MUD CHECK @ 4550
 VIS: 52
 WT: 9.3

MUD CHECK @ 4550
 VIS: 52
 WT: 9.3

MUD CHECK @ 4550
 VIS: 52
 WT: 9.3

MUD CHECK @ 4550
 VIS: 52
 WT: 9.3

MUD CHECK @ 4550
 VIS: 52
 WT: 9.3

MUD CHECK @ 4550
 VIS: 52
 WT: 9.3

MUD CHECK @ 4550
 VIS: 52
 WT: 9.3

MUD CHECK @ 4550
 VIS: 52
 WT: 9.3

MUD CHECK @ 4550
 VIS: 52
 WT: 9.3

MUD CHECK @ 4550
 VIS: 52
 WT: 9.3

MUD CHECK @ 4550
 VIS: 52
 WT: 9.3

MUD CHECK @ 4550
 VIS: 52
 WT: 9.3

MUD CHECK @ 4550
 VIS: 52
 WT: 9.3

MUD CHECK @ 4550
 VIS: 52
 WT: 9.3

MUD CHECK @ 4550
 VIS: 52
 WT: 9.3

COMMENTS:

**PRODUCTION CASING WAS SET TO FURTHER
 EVALUATE THE POTENTIAL PRODUCTIVITY OF THIS WELL**

KEVIN L. KESSLER