

Timothy G. Pierce

Petroleum Geologist

GEOLOGIST'S REPORT DRILLING TIME AND SAMPLE LOG

COMPANY N-10 Exploration, LLC
 LEASE Medicine River Ranch 'D' #11
 FIELD Landis
 LOCATION E/2 NW NE
 SEC 10 TWP 34S RGE 11W
 COUNTY Barber STATE Kansas
 CONTRACTOR Hardt Drilling Rig #1
 SPUD 4-18-2013 COMP 4-25-2013
 RTD 4855 LTD 4851
 MUD UP 3162 TYPE MUD Chemical
 SAMPLES SAVED FROM 4000 TO RTD
 DRILLING TIME KEPT FROM 3900 TO RTD
 SAMPLES EXAMINED FROM 4000 TO RTD
 GEOLOGICAL SUPERVISION FROM 4050' to RTD
 GEOLOGIST ON WELL Tim Pierce

ELEVATIONS

KB 1351'
 DF _____
 GL 1341'

Measurements Are All
From Kelly Bushing

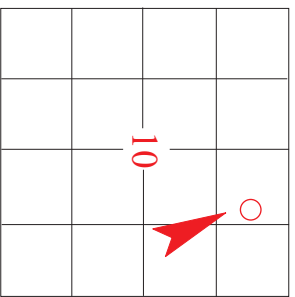
CASING

CONDUCTOR _____
 SURFACE 8-5/8" at 266'
 PRODUCTION 5-1/2" at 4844'

ELECTRICAL SURVEYS
DIL / CN-CD
Pioneer Energy Svcs.

FORMATION TOPS

FORMATION TOPS	ELECTRIC LOG	SAMPLE
Latan LS.	3868 (-2517)	3945 (-2594)
Stark Sh.	4273 (-2922)	4279 (-2928)
Cherokee Sh.	4488 (-3137)	4493 (-3142)
Mississippi	4523 (-3172)	4544 (-3193)
Kinderhook Sh.	4726 (-3375)	4731 (-3380)
Chattanooga Sh.	4810 (-3459)	4815 (-3464)


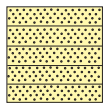
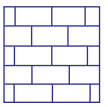
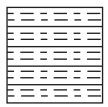

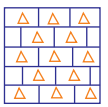

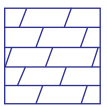


API # 15-007-23,997

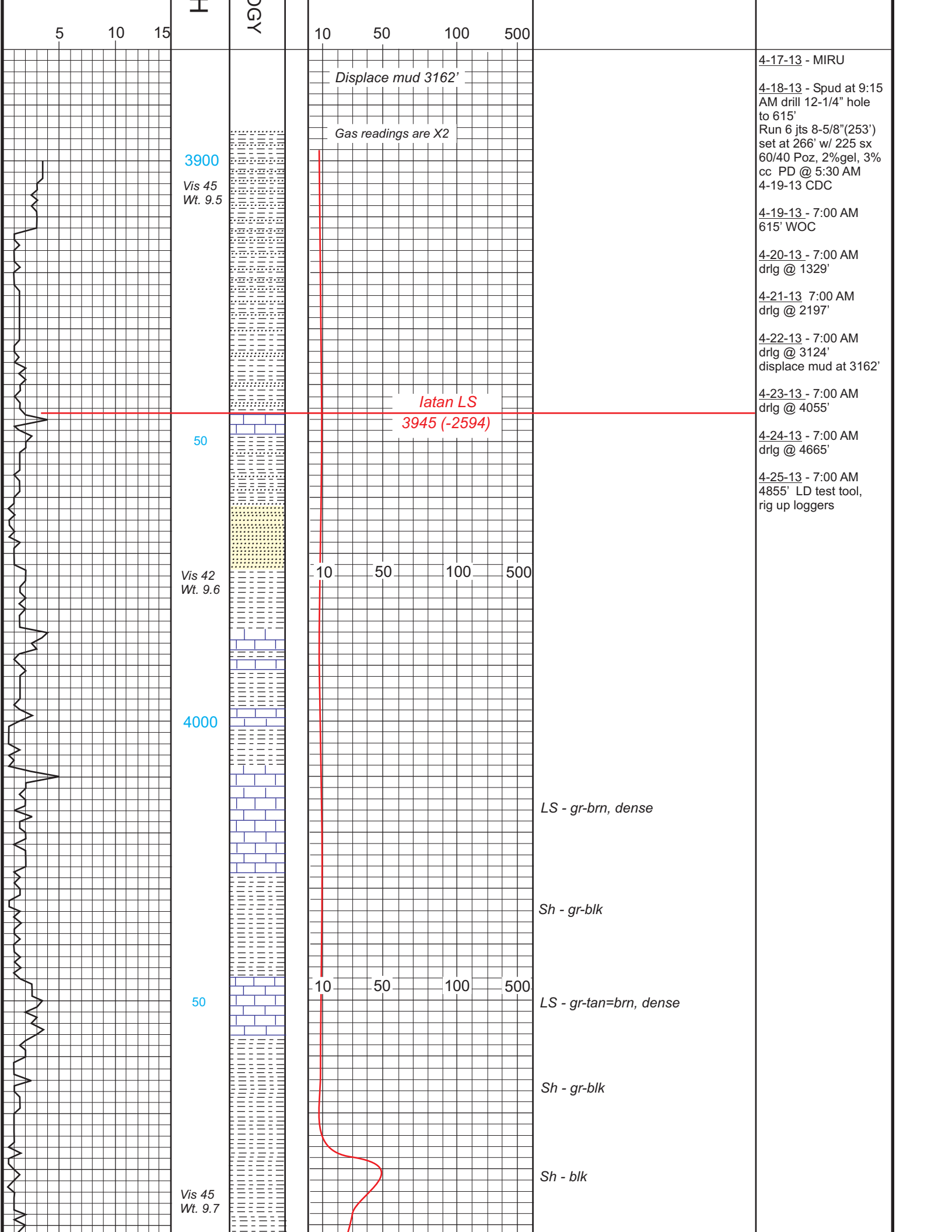
REMARKS Samples and electric logs indicate a productive zone in the Mississippi from 4527'- 4601'.
Samples indicated a show in the cherokee sand at 4517'-4520', this was accompanied by a good gas kick, logs show a possible zone.
The gas detector indicated a possible zone in the Pawnee LS at 4444'- 4448', electric logs confirm this also
A slight sample show was logged as coming from the Swope zone at 4290', however electric logs do not indicate any type of zone development in the Swope. Logs indicate a porosity zone in the Hertha zone at 4316'- 4319' so the sample show logged from the Swope zone could have possibly come from the Hertha zone. This should be examined before the well is abandoned.
There were no other zones of interest indicated by samples or electric logs

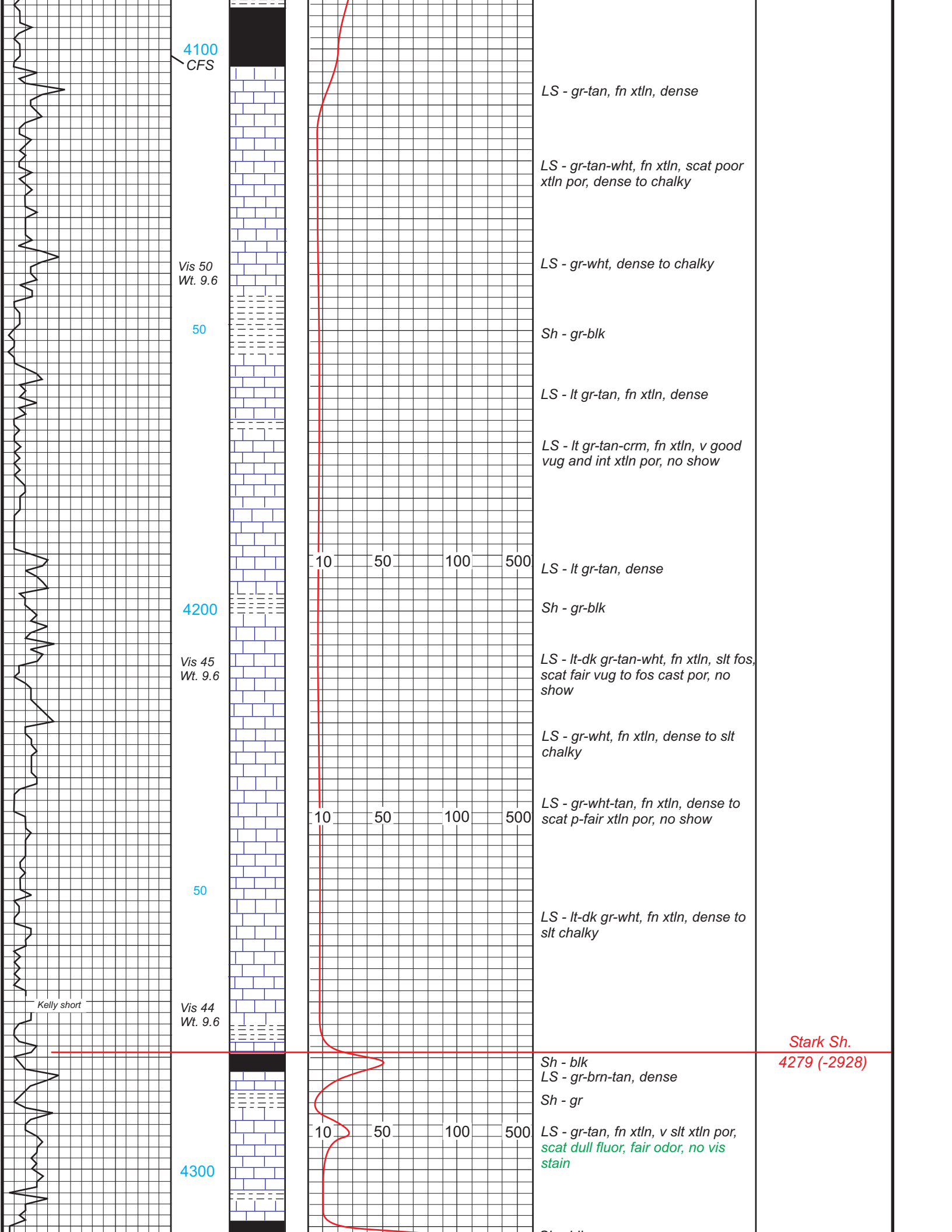
Timothy G. Pierce

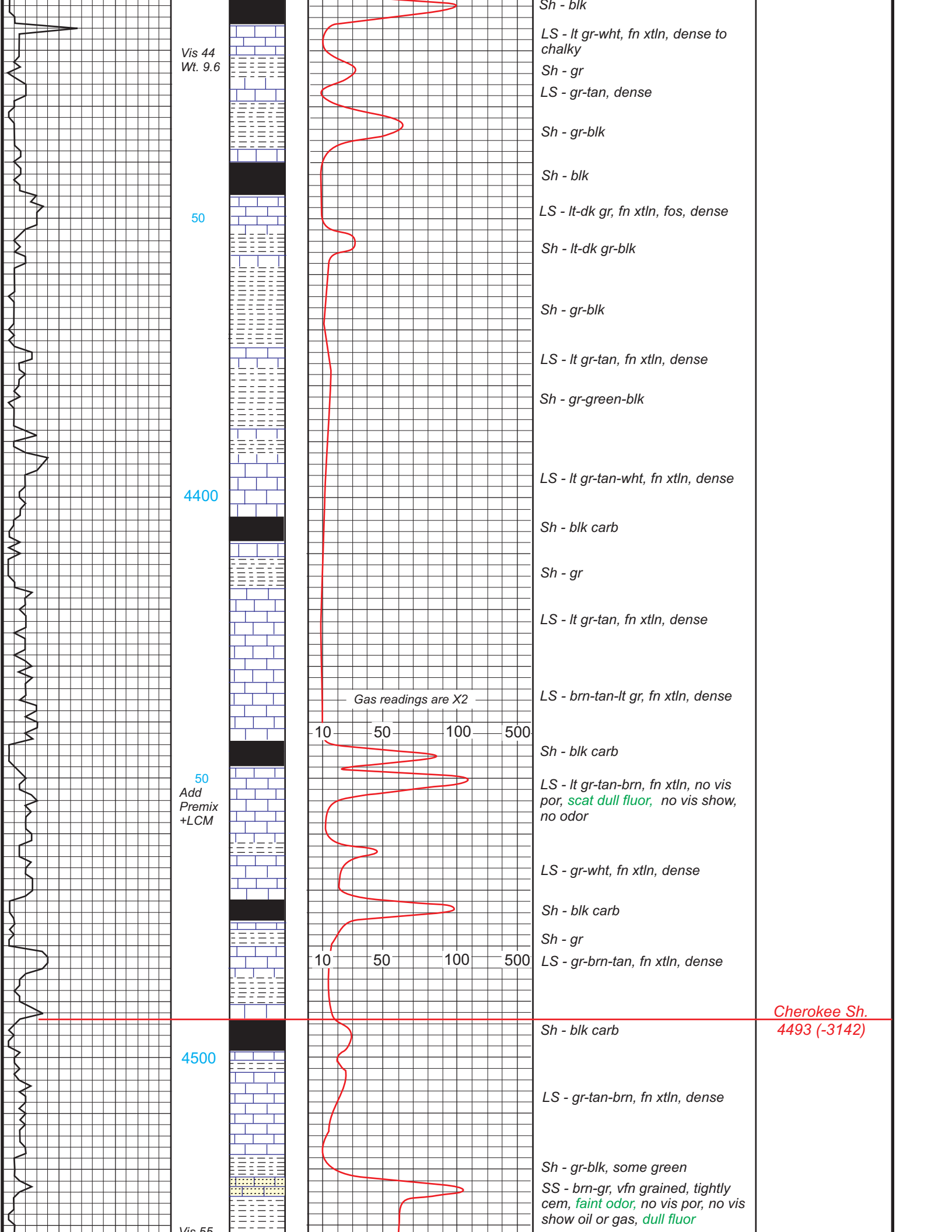
LEGEND

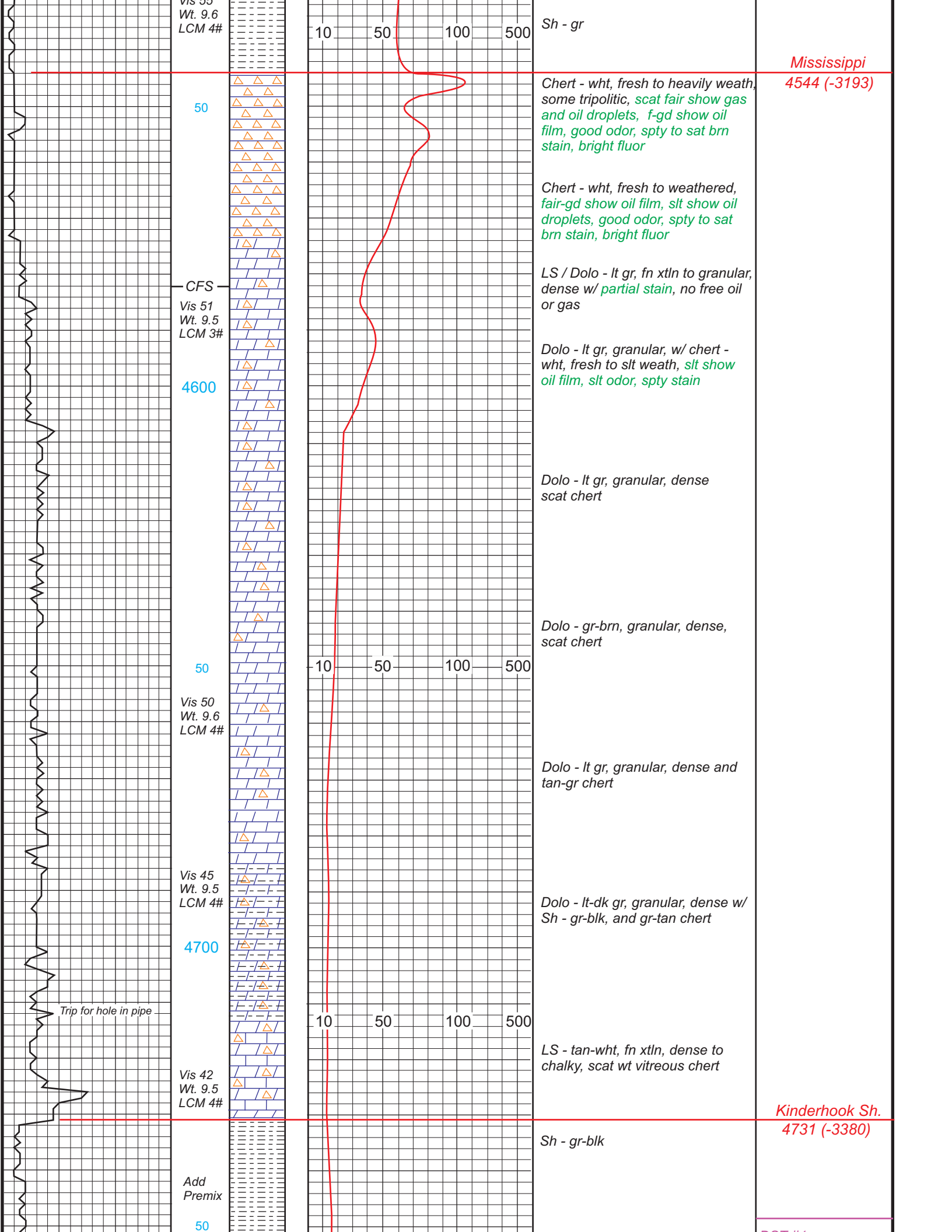
							
Anhydrite	Sandstone	Limestone	Shale	Carb Sh	Cherty LS	Chert	Dolomite

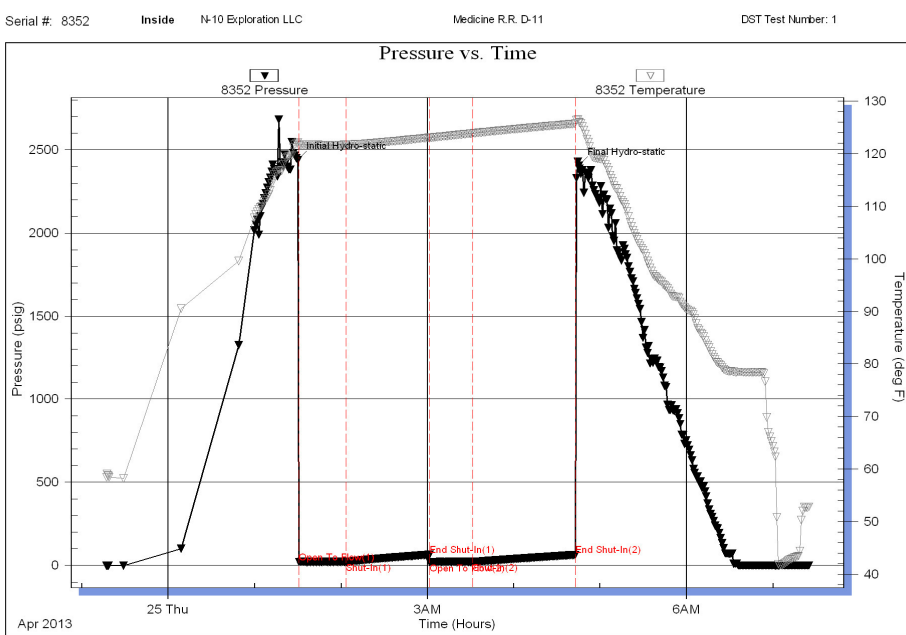
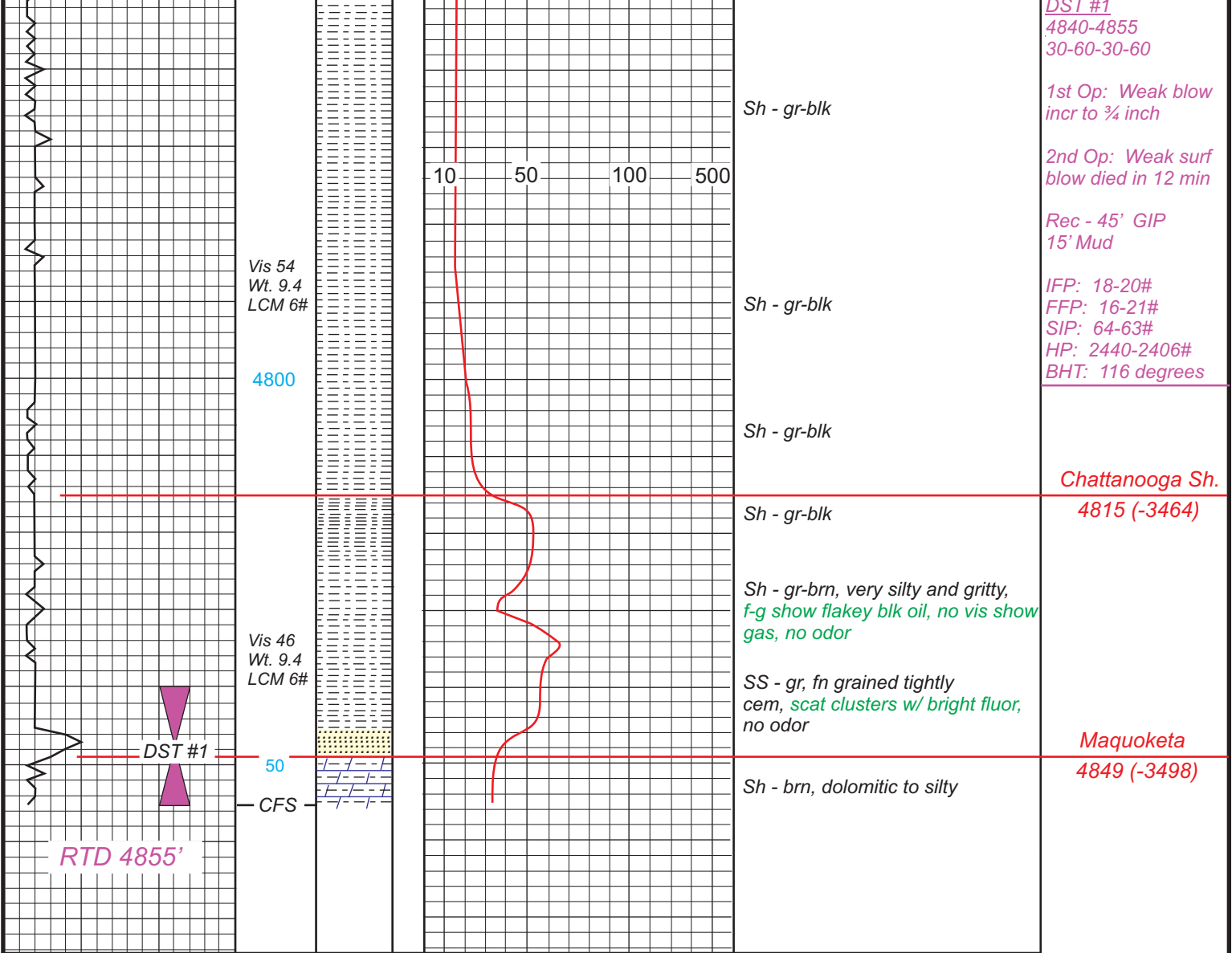
DRILLING TIME IN MINUTES PER FOOT <small>Rate of Penetration Decreases</small>	DEPTH	LITHOLOG	GAS SCALE	SAMPLE DESCRIPTION	REMARKS
↓					











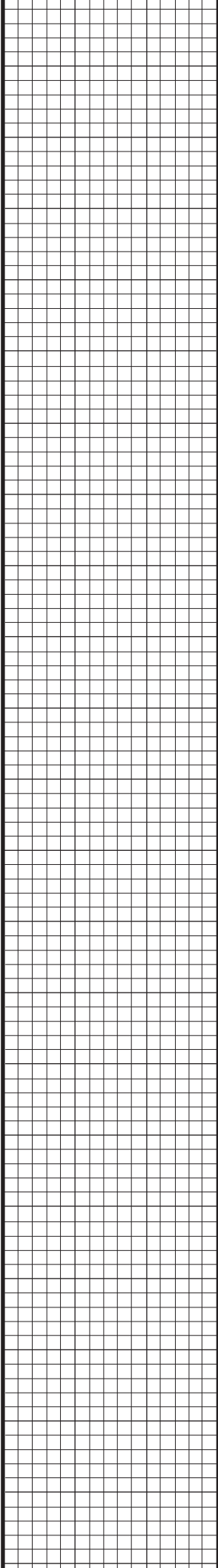
DST #1
4840-4855
30-60-30-60

1st Op: Weak blow
incr to 3/4 inch

2nd Op: Weak surf
blow died in 12 min

Rec - 45' GIP
15' Mud

IFP: 18-20#
FFP: 16-21#
SIP: 64-63#
HP: 2440-2406#
BHT: 116 degrees



50

Vis 56
Wt. 9.4
LCM 6#

