



DRILL STEM TEST REPORT

Prepared For: **John O Farmer Inc**

PO Box 352
Russell, KS 67665

ATTN: Austin Klaus

Hanchett B #2

18-4s-18w Phillips,KS

Start Date: 2013.04.30 @ 15:00:00

End Date: 2013.04.30 @ 21:19:00

Job Ticket #: 53614 DST #: 1

Trilobite Testing, Inc
PO Box 362 Hays, KS 67601
ph: 785-625-4778 fax: 785-625-5620

Printed: 2013.05.02 @ 09:19:07



TRILOBITE TESTING, INC.

DRILL STEM TEST REPORT

John O Farmer Inc

18-4s-18w Phillips,KS

PO Box 352
Russell, KS 67665

Hanchett B #2

Job Ticket: 53614

DST#: 1

ATTN: Austin Klaus

Test Start: 2013.04.30 @ 15:00:00

GENERAL INFORMATION:

Formation: **LKC "C-D"**

Deviated: No Whipstock: ft (KB)

Time Tool Opened: 16:33:00

Time Test Ended: 21:19:00

Test Type: Conventional Bottom Hole (Initial)

Tester: Jim Svaty

Unit No: 41

Interval: 3163.00 ft (KB) To 3210.00 ft (KB) (TVD)

Reference Elevations: 1931.00 ft (KB)

Total Depth: 3210.00 ft (KB) (TVD)

1924.00 ft (CF)

Hole Diameter: 7.88 inches Hole Condition: Poor

KB to GR/CF: 7.00 ft

Serial #: 6752 Inside

Press @ Run Depth: 74.28 psig @ 3174.00 ft (KB)

Capacity: 8000.00 psig

Start Date: 2013.04.30

End Date: 2013.04.30

Last Calib.: 2013.04.30

Start Time: 15:00:01

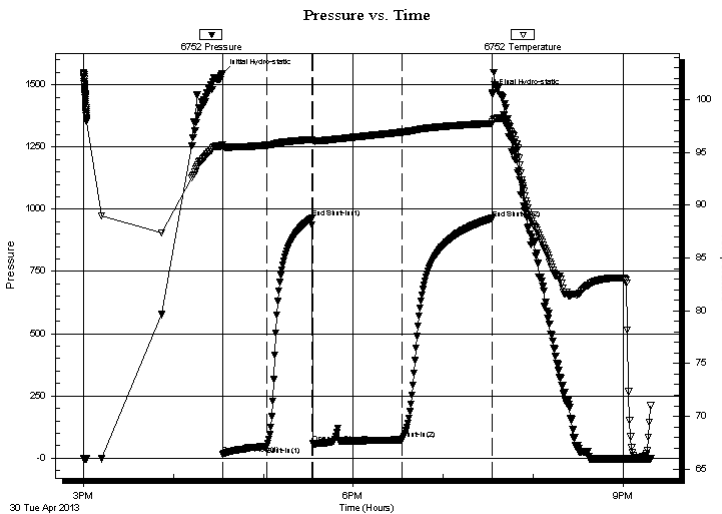
End Time: 21:18:50

Time On Btm: 2013.04.30 @ 16:32:40

Time Off Btm: 2013.04.30 @ 19:32:50

TEST COMMENT: 30-IFP- Surface Blow Building to 1" in 5 min.
30-ISIP- No Blow
60-FFP- Surface Blow in 3 min. Building to 1 1/4" in 12 min.
60-FSIP- No Blow

PRESSURE SUMMARY



Time (Min.)	Pressure (psig)	Temp (deg F)	Annotation
0	1544.63	95.73	Initial Hydro-static
1	16.40	95.50	Open To Flow (1)
30	49.17	95.66	Shut-In(1)
60	964.05	96.21	End Shut-In(1)
61	59.19	96.07	Open To Flow (2)
120	74.28	96.90	Shut-In(2)
180	962.84	97.74	End Shut-In(2)
181	1464.42	97.86	Final Hydro-static

Recovery

Length (ft)	Description	Volume (bbl)
146.00	OCM 30%o 70% m	0.95
5.00	CO 100%	0.07

Gas Rates

	Choke (inches)	Pressure (psig)	Gas Rate (Mcf/d)



**TRILOBITE
TESTING, INC.**

DRILL STEM TEST REPORT

John O Farmer Inc

18-4s-18w Phillips,KS

PO Box 352
Russell, KS 67665

Hanchett B #2

Job Ticket: 53614

DST#: 1

ATTN: Austin Klaus

Test Start: 2013.04.30 @ 15:00:00

GENERAL INFORMATION:

Formation: **LKC " C-D "**

Deviated: No Whipstock: ft (KB)

Time Tool Opened: 16:33:00

Time Test Ended: 21:19:00

Test Type: Conventional Bottom Hole (Initial)

Tester: Jim Svaty

Unit No: 41

Interval: 3163.00 ft (KB) To 3210.00 ft (KB) (TVD)

Reference Elevations: 1931.00 ft (KB)

Total Depth: 3210.00 ft (KB) (TVD)

1924.00 ft (CF)

Hole Diameter: 7.88 inches Hole Condition: Poor

KB to GR/CF: 7.00 ft

Serial #: 8322 Outside

Press @ RunDepth: psig @ 3174.00 ft (KB)

Capacity: 8000.00 psig

Start Date: 2013.04.30

End Date: 2013.04.30

Last Calib.: 2013.04.30

Start Time: 15:00:01

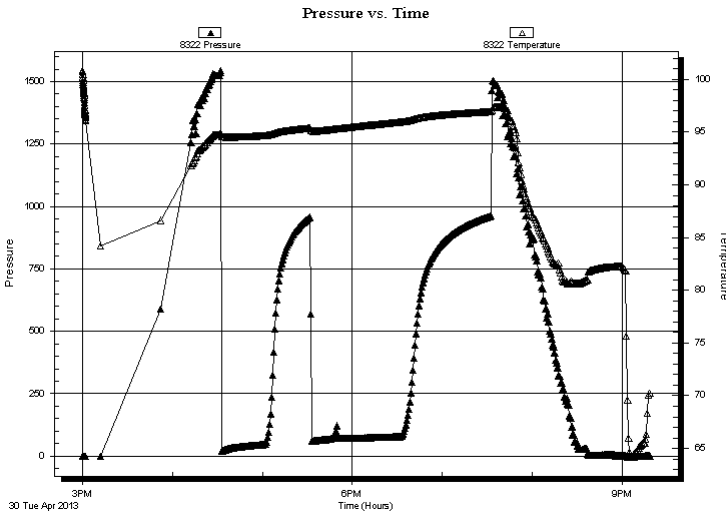
End Time: 21:18:50

Time On Btm:

Time Off Btm:

TEST COMMENT: 30-IFP- Surface Blow Building to 1" in 5 min.
30-ISIP- No Blow
60-FFP- Surface Blow in 3 min. Building to 1 1/4" in 12 min.
60-FSIP- No Blow

PRESSURE SUMMARY



Time (Min.)	Pressure (psig)	Temp (deg F)	Annotation

Recovery

Length (ft)	Description	Volume (bbl)
146.00	OCM 30%o 70%m	0.95
5.00	CO 100%	0.07

Gas Rates

Choke (inches)	Pressure (psig)	Gas Rate (Mcf/d)



**TRILOBITE
TESTING, INC.**

DRILL STEM TEST REPORT

TOOL DIAGRAM

John O Farmer Inc

18-4s-18w Phillips,KS

PO Box 352
Russell, KS 67665

Hanchett B #2

Job Ticket: 53614

DST#: 1

ATTN: Austin Klaus

Test Start: 2013.04.30 @ 15:00:00

Tool Information

Drill Pipe:	Length: 3039.00 ft	Diameter: 3.80 inches	Volume: 42.63 bbl	Tool Weight: 2000.00 lb
Heavy Wt. Pipe:	Length: 0.00 ft	Diameter: 2.75 inches	Volume: 0.00 bbl	Weight set on Packer: 25000.00 lb
Drill Collar:	Length: 121.00 ft	Diameter: 2.25 inches	Volume: 0.60 bbl	Weight to Pull Loose: 35000.00 lb
			<u>Total Volume: 43.23 bbl</u>	Tool Chased 0.00 ft
Drill Pipe Above KB:	17.00 ft			String Weight: Initial 32000.00 lb
Depth to Top Packer:	3163.00 ft			Final 33000.00 lb
Depth to Bottom Packer:	ft			
Interval between Packers:	47.00 ft			
Tool Length:	67.00 ft			
Number of Packers:	2	Diameter: 6.75 inches		

Tool Comments:

Tool Description

Tool Description	Length (ft)	Serial No.	Position	Depth (ft)	Accum. Lengths
Shut In Tool	5.00			3148.00	
Hydraulic tool	5.00			3153.00	
Packer	5.00			3158.00	20.00 Bottom Of Top Packer
Packer	5.00			3163.00	
Stubb	1.00			3164.00	
Perforations	9.00			3173.00	
Change Over Sub	1.00			3174.00	
Recorder	0.00	6752	Inside	3174.00	
Recorder	0.00	8322	Outside	3174.00	
Blank Spacing	32.00			3206.00	
Change Over Sub	1.00			3207.00	
Bullnose	3.00			3210.00	47.00 Bottom Packers & Anchor

Total Tool Length: 67.00



**TRILOBITE
TESTING, INC.**

DRILL STEM TEST REPORT

FLUID SUMMARY

John O Farmer Inc

18-4s-18w Phillips,KS

PO Box 352
Russell, KS 67665

Hanchett B #2

Job Ticket: 53614

DST#: 1

ATTN: Austin Klaus

Test Start: 2013.04.30 @ 15:00:00

Mud and Cushion Information

Mud Type: Gel Chem

Cushion Type:

Oil API:

35 deg API

Mud Weight: 8.00 lb/gal

Cushion Length:

ft

Water Salinity:

ppm

Viscosity: 55.00 sec/qt

Cushion Volume:

bbbl

Water Loss: 6.37 in³

Gas Cushion Type:

Resistivity: ohm.m

Gas Cushion Pressure:

psig

Salinity: 300.00 ppm

Filter Cake: 2.50 inches

Recovery Information

Recovery Table

Length ft	Description	Volume bbbl
146.00	OCM 30%o 70%m	0.946
5.00	CO 100%	0.070

Total Length: 151.00 ft

Total Volume: 1.016 bbl

Num Fluid Samples: 0

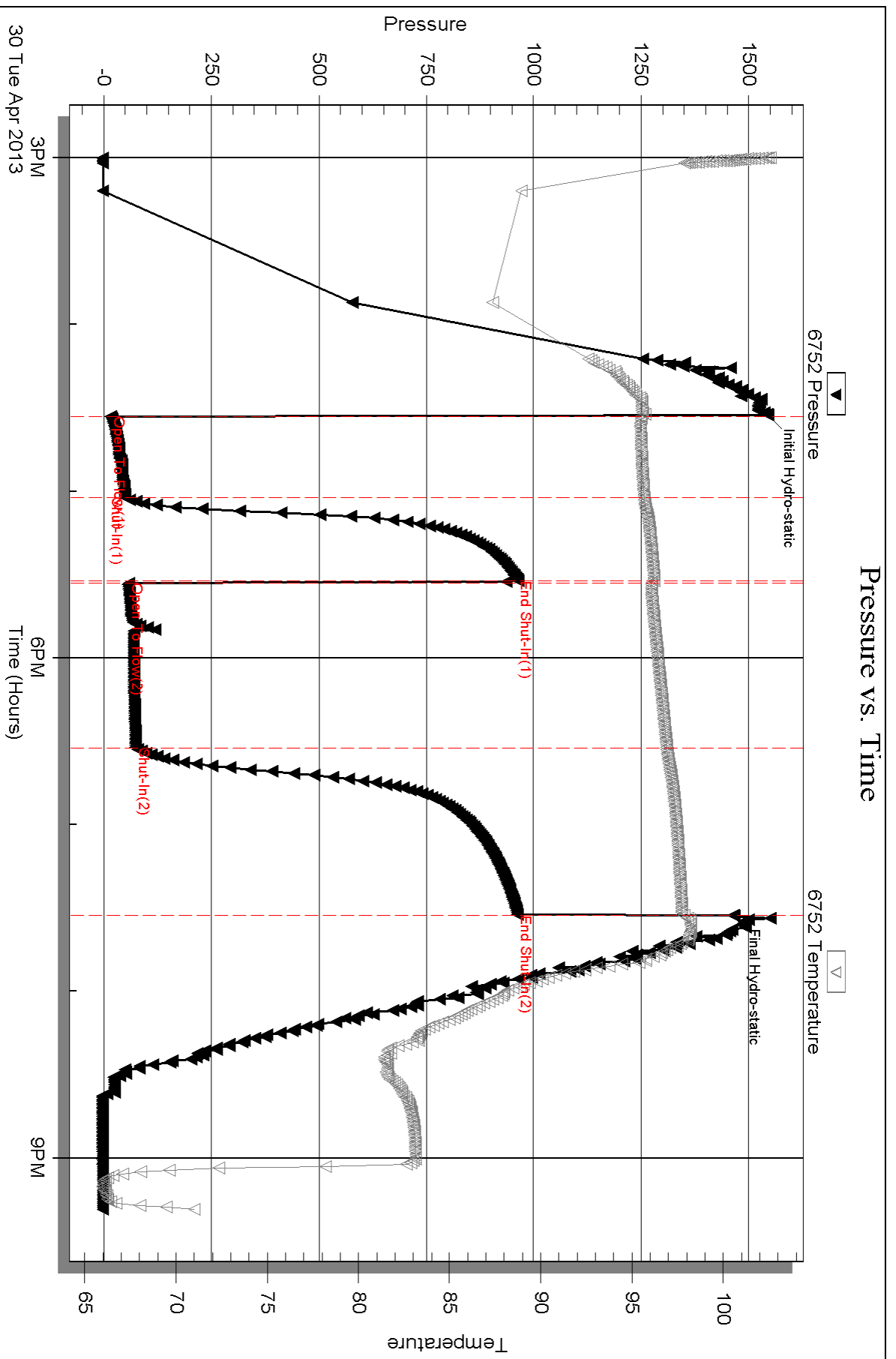
Num Gas Bombs: 0

Serial #:

Laboratory Name:

Laboratory Location:

Recovery Comments:

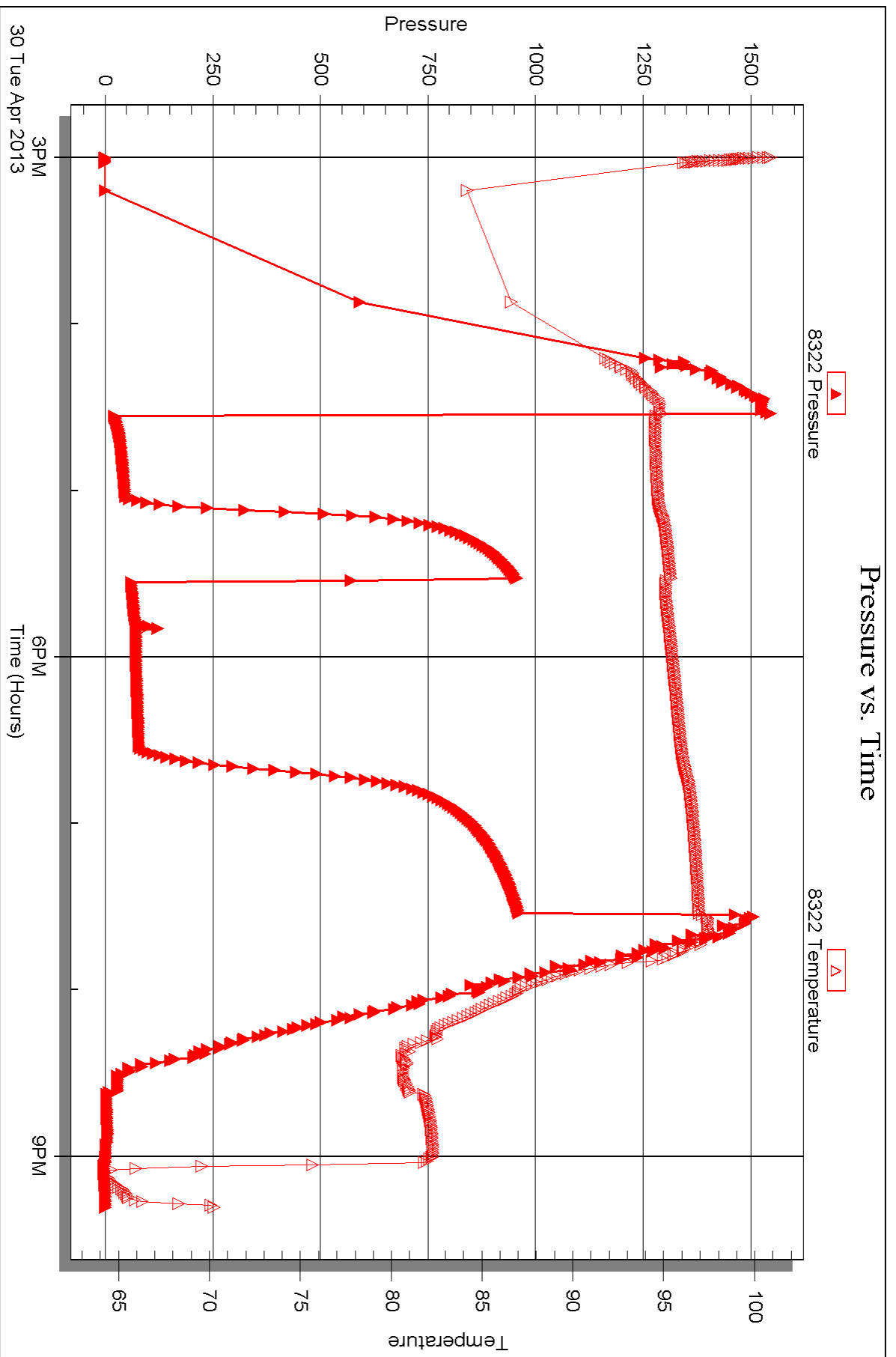


Serial #: 8322

Outside John O Farmer Inc

Hanchett B #2

DST Test Number: 1





DRILL STEM TEST REPORT

Prepared For: **John O Farmer Inc**

PO Box 352
Russell, KS 67665

ATTN: Austin Klaus

Hanchett B #2

18-4s-18w Phillips,KS

Start Date: 2013.05.01 @ 05:20:00

End Date: 2013.05.01 @ 11:39:00

Job Ticket #: 53615 DST #: 2

Trilobite Testing, Inc

PO Box 362 Hays, KS 67601

ph: 785-625-4778 fax: 785-625-5620

Printed: 2013.05.02 @ 09:18:07

John O Farmer Inc
18-4s-18w Phillips,KS
Hanchett B #2
DST # 2
LKC " E - G "
2013.05.01



**TRILOBITE
TESTING, INC.**

DRILL STEM TEST REPORT

John O Farmer Inc

18-4s-18w Phillips,KS

PO Box 352
Russell, KS 67665

Hanchett B #2

Job Ticket: 53615

DST#: 2

ATTN: Austin Klaus

Test Start: 2013.05.01 @ 05:20:00

GENERAL INFORMATION:

Formation: **LKC " E - G "**

Deviated: No Whipstock: ft (KB)

Time Tool Opened: 07:51:40

Time Test Ended: 11:39:00

Test Type: Conventional Bottom Hole (Reset)

Tester: Jim Svaty

Unit No: 41

Interval: 3208.00 ft (KB) To 3254.00 ft (KB) (TVD)

Reference Elevations: 1931.00 ft (KB)

Total Depth: 3254.00 ft (KB) (TVD)

1924.00 ft (CF)

Hole Diameter: 7.88 inches Hole Condition: Poor

KB to GR/CF: 7.00 ft

Serial #: 6752 Inside

Press @ Run Depth: 30.42 psig @ 3219.00 ft (KB)

Capacity: 8000.00 psig

Start Date: 2013.05.01

End Date:

2013.05.01

Last Calib.: 2013.05.01

Start Time: 05:20:01

End Time:

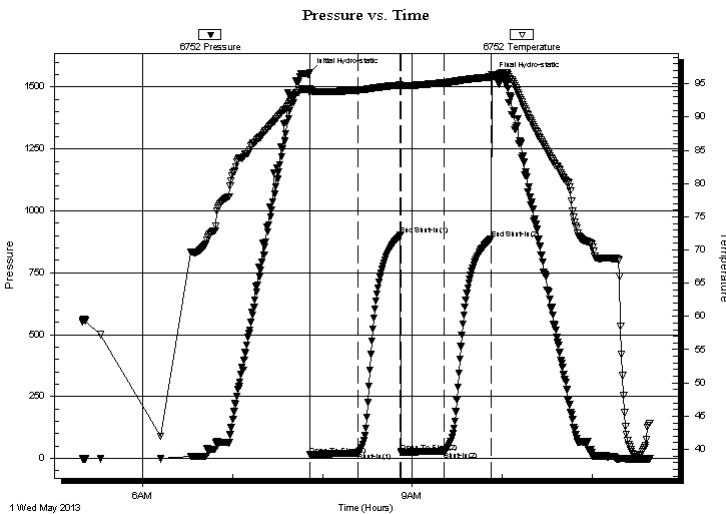
11:38:50

Time On Btm: 2013.05.01 @ 07:51:30

Time Off Btm: 2013.05.01 @ 09:53:00

TEST COMMENT: 30-IFP- No Blow
30-ISIP- No Blow
30-FFP- No Blow
30-FSIP- No Blow

PRESSURE SUMMARY



Time (Min.)	Pressure (psig)	Temp (deg F)	Annotation
0	1558.73	94.21	Initial Hydro-static
1	14.38	93.65	Open To Flow (1)
33	22.90	94.06	Shut-In(1)
61	901.56	94.82	End Shut-In(1)
61	24.16	94.70	Open To Flow (2)
90	30.42	95.18	Shut-In(2)
122	887.26	96.03	End Shut-In(2)
122	1542.88	96.43	Final Hydro-static

Recovery

Length (ft)	Description	Volume (bbl)
3.00	OCM 2%o 98%m	0.01

* Recovery from multiple tests

Gas Rates

Choke (inches)	Pressure (psig)	Gas Rate (Mcf/d)



TRILOBITE TESTING, INC.

DRILL STEM TEST REPORT

John O Farmer Inc

18-4s-18w Phillips,KS

PO Box 352
Russell, KS 67665

Hanchett B #2

Job Ticket: 53615

DST#: 2

ATTN: Austin Klaus

Test Start: 2013.05.01 @ 05:20:00

GENERAL INFORMATION:

Formation: **LKC " E - G "**

Deviated: No Whipstock: ft (KB)

Time Tool Opened: 07:51:40

Time Test Ended: 11:39:00

Test Type: Conventional Bottom Hole (Reset)

Tester: Jim Svaty

Unit No: 41

Interval: **3208.00 ft (KB) To 3254.00 ft (KB) (TVD)**

Total Depth: 3254.00 ft (KB) (TVD)

Hole Diameter: 7.88 inches Hole Condition: Poor

Reference Elevations: 1931.00 ft (KB)

1924.00 ft (CF)

KB to GR/CF: 7.00 ft

Serial #: 8322 Outside

Press @ Run Depth: psig @ 3219.00 ft (KB)

Start Date: 2013.05.01

End Date:

2013.05.01

Start Time: 05:20:01

End Time:

11:38:50

Capacity: 8000.00 psig

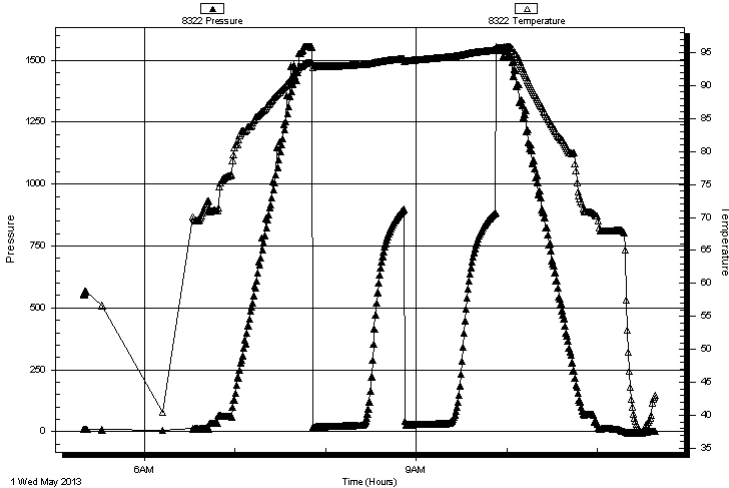
Last Calib.: 2013.05.01

Time On Btm:

Time Off Btm:

TEST COMMENT: 30-IFP- No Blow
30-ISIP- No Blow
30-FFP- No Blow
30-FSIP- No Blow

Pressure vs. Time



PRESSURE SUMMARY

Time (Min.)	Pressure (psig)	Temp (deg F)	Annotation

Recovery

Length (ft)	Description	Volume (bbl)
3.00	OCM 2%o 98%m	0.01

Gas Rates

	Choke (inches)	Pressure (psig)	Gas Rate (Mcf/d)

* Recovery from multiple tests



**TRILOBITE
TESTING, INC.**

DRILL STEM TEST REPORT

TOOL DIAGRAM

John O Farmer Inc

18-4s-18w Phillips,KS

PO Box 352
Russell, KS 67665

Hanchett B #2

Job Ticket: 53615

DST#: 2

ATTN: Austin Klaus

Test Start: 2013.05.01 @ 05:20:00

Tool Information

Drill Pipe:	Length: 3101.00 ft	Diameter: 3.80 inches	Volume: 43.50 bbl	Tool Weight: 2000.00 lb
Heavy Wt. Pipe:	Length: 0.00 ft	Diameter: 2.75 inches	Volume: 0.00 bbl	Weight set on Packer: 25000.00 lb
Drill Collar:	Length: 121.00 ft	Diameter: 2.25 inches	Volume: 0.60 bbl	Weight to Pull Loose: 37000.00 lb
			<u>Total Volume: 44.10 bbl</u>	Tool Chased 0.00 ft
Drill Pipe Above KB:	34.00 ft			String Weight: Initial 36000.00 lb
Depth to Top Packer:	3208.00 ft			Final 36000.00 lb
Depth to Bottom Packer:	ft			
Interval between Packers:	46.00 ft			
Tool Length:	66.00 ft			
Number of Packers:	2	Diameter: 6.75 inches		

Tool Comments:

Tool Description	Length (ft)	Serial No.	Position	Depth (ft)	Accum. Lengths
------------------	-------------	------------	----------	------------	----------------

Shut In Tool	5.00			3193.00	
Hydraulic tool	5.00			3198.00	
Packer	5.00			3203.00	20.00 Bottom Of Top Packer
Packer	5.00			3208.00	
Stubb	1.00			3209.00	
Perforations	9.00			3218.00	
Change Over Sub	1.00			3219.00	
Recorder	0.00	6752	Inside	3219.00	
Recorder	0.00	8322	Outside	3219.00	
Blank Spacing	31.00			3250.00	
Change Over Sub	1.00			3251.00	
Bullnose	3.00			3254.00	46.00 Bottom Packers & Anchor

Total Tool Length: 66.00



**TRILOBITE
TESTING, INC.**

DRILL STEM TEST REPORT

FLUID SUMMARY

John O Farmer Inc

18-4s-18w Phillips,KS

PO Box 352
Russell, KS 67665

Hanchett B #2

Job Ticket: 53615

DST#: 2

ATTN: Austin Klaus

Test Start: 2013.05.01 @ 05:20:00

Mud and Cushion Information

Mud Type: Gel Chem

Cushion Type:

Oil API:

deg API

Mud Weight: 8.00 lb/gal

Cushion Length:

ft

Water Salinity:

ppm

Viscosity: 55.00 sec/qt

Cushion Volume:

bbbl

Water Loss: 6.37 in³

Gas Cushion Type:

Resistivity: ohm.m

Gas Cushion Pressure:

psig

Salinity: 300.00 ppm

Filter Cake: 2.50 inches

Recovery Information

Recovery Table

Length ft	Description	Volume bbl
3.00	OCM 2%o 98%m	0.015

Total Length: 3.00 ft Total Volume: 0.015 bbl

Num Fluid Samples: 0

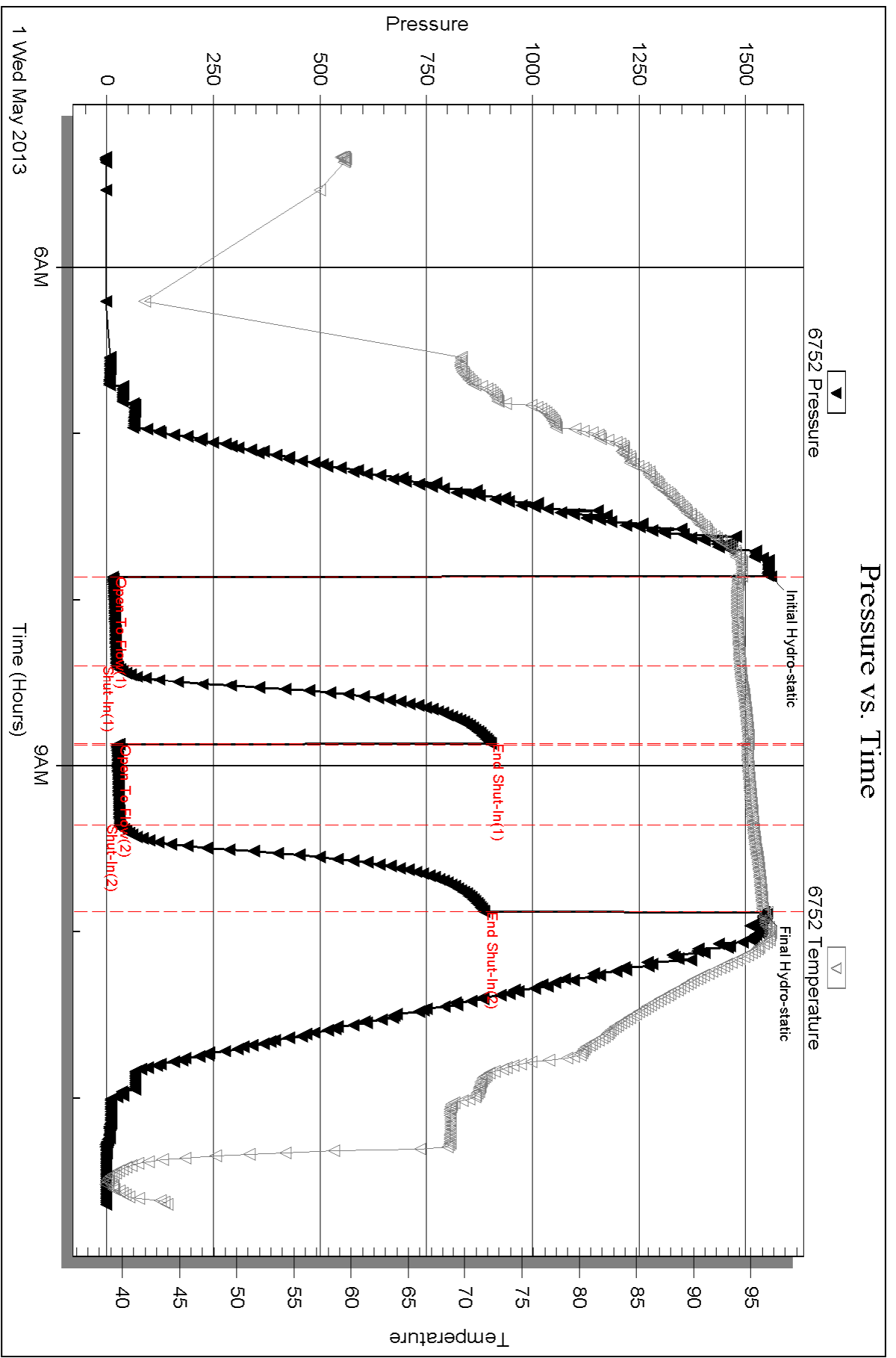
Num Gas Bombs: 0

Serial #:

Laboratory Name:

Laboratory Location:

Recovery Comments:

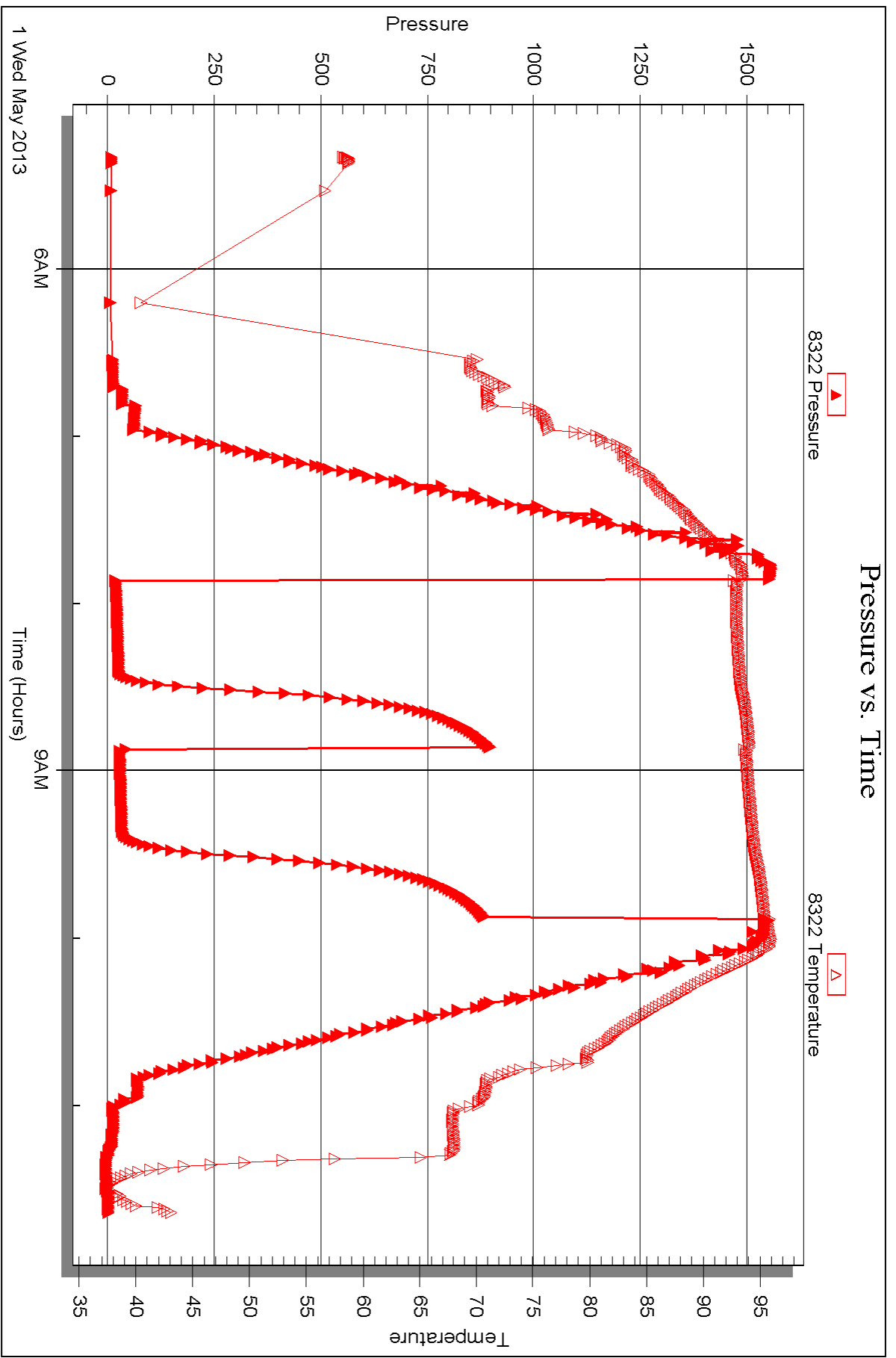


Serial #: 8322

Outside John O Farmer Inc

Hanchett B#2

DST Test Number: 2





DRILL STEM TEST REPORT

Prepared For: **John O Farmer Inc**

PO Box 352
Russell, KS 67665

ATTN: Austin Klaus

Hanchett B #2

18-4s-18w Phillips,KS

Start Date: 2013.05.01 @ 22:22:00

End Date: 2013.05.02 @ 05:01:00

Job Ticket #: 53616 DST #: 3

Trilobite Testing, Inc
PO Box 362 Hays, KS 67601
ph: 785-625-4778 fax: 785-625-5620

Printed: 2013.05.02 @ 09:16:11



**TRILOBITE
TESTING, INC.**

DRILL STEM TEST REPORT

John O Farmer Inc

18-4s-18w Phillips,KS

PO Box 352
Russell, KS 67665

Hanchett B #2

Job Ticket: 53616

DST#: 3

ATTN: Austin Klaus

Test Start: 2013.05.01 @ 22:22:00

GENERAL INFORMATION:

Formation: **LKC " H - K "**

Deviated: No Whipstock: ft (KB)

Time Tool Opened: 00:48:40

Time Test Ended: 05:01:00

Test Type: Conventional Bottom Hole (Reset)

Tester: Jim Svaty

Unit No: 41

Interval: 3248.00 ft (KB) To 3348.00 ft (KB) (TVD)

Reference Elevations: 1931.00 ft (KB)

Total Depth: 3348.00 ft (KB) (TVD)

1924.00 ft (CF)

Hole Diameter: 7.88 inches Hole Condition: Poor

KB to GR/CF: 7.00 ft

Serial #: 6752 Inside

Press @ Run Depth: 17.94 psig @ 3254.00 ft (KB)

Capacity: 8000.00 psig

Start Date: 2013.05.01

End Date:

2013.05.02

Last Calib.: 2013.05.02

Start Time: 22:22:01

End Time:

05:00:40

Time On Btm: 2013.05.02 @ 00:48:30

Time Off Btm: 2013.05.02 @ 02:49:50

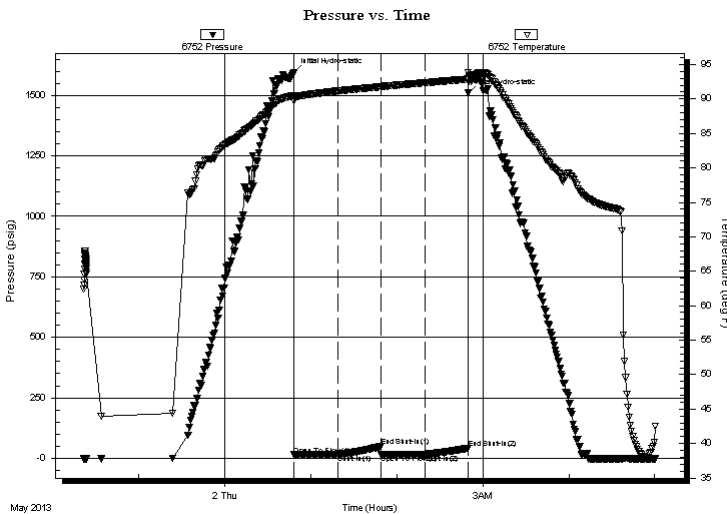
TEST COMMENT: 30-IFP- Surface Blow Died in 28 min.

30-ISIP- No Blow

30-FFP- No Blow

30-FSIP- No Blow

PRESSURE SUMMARY



Time (Min.)	Pressure (psig)	Temp (deg F)	Annotation
0	1594.94	90.49	Initial Hydro-static
1	14.85	89.80	Open To Flow (1)
31	16.28	91.15	Shut-In(1)
61	49.45	91.78	End Shut-In(1)
61	16.28	91.78	Open To Flow (2)
91	17.94	92.35	Shut-In(2)
122	41.88	92.86	End Shut-In(2)
122	1508.89	93.78	Final Hydro-static

Recovery

Length (ft)	Description	Volume (bbl)
6.00	Mud 100%	0.03

Gas Rates

Choke (inches)	Pressure (psig)	Gas Rate (Mcf/d)

* Recovery from multiple tests



**TRILOBITE
TESTING, INC.**

DRILL STEM TEST REPORT

John O Farmer Inc

18-4s-18w Phillips,KS

PO Box 352
Russell, KS 67665

Hanchett B #2

Job Ticket: 53616

DST#: 3

ATTN: Austin Klaus

Test Start: 2013.05.01 @ 22:22:00

GENERAL INFORMATION:

Formation: **LKC " H - K "**

Deviated: No Whipstock: ft (KB)

Time Tool Opened: 00:48:40

Time Test Ended: 05:01:00

Test Type: Conventional Bottom Hole (Reset)

Tester: Jim Svaty

Unit No: 41

Interval: 3248.00 ft (KB) To 3348.00 ft (KB) (TVD)

Reference Elevations: 1931.00 ft (KB)

Total Depth: 3348.00 ft (KB) (TVD)

1924.00 ft (CF)

Hole Diameter: 7.88 inches Hole Condition: Poor

KB to GR/CF: 7.00 ft

Serial #: 8322 Outside

Press @ Run Depth: psig @ 3254.00 ft (KB)

Capacity: 8000.00 psig

Start Date: 2013.05.01

End Date:

2013.05.02

Last Calib.:

2013.05.02

Start Time: 22:22:01

End Time:

05:00:50

Time On Btm:

Time Off Btm:

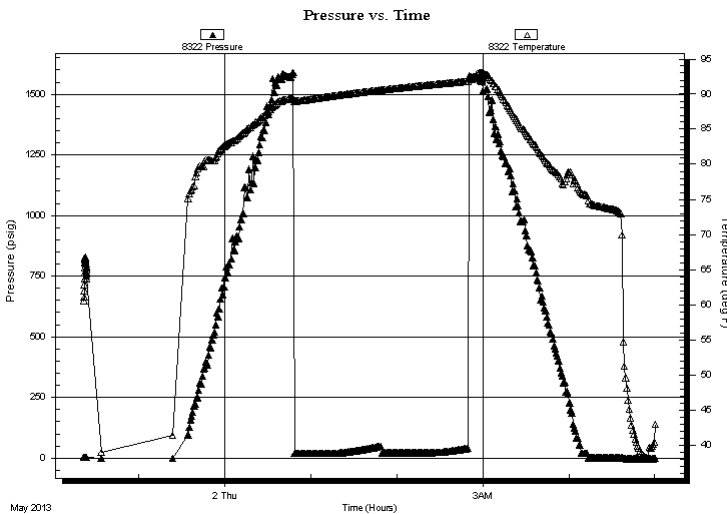
TEST COMMENT: 30-IFP- Surface Blow Died in 28 min.

30-ISIP- No Blow

30-FFP- No Blow

30-FSIP- No Blow

PRESSURE SUMMARY



Time
(Min.)

Pressure
(psig)

Temp
(deg F)

Annotation

Recovery

Length (ft)	Description	Volume (bbl)
6.00	Mud 100%	0.03

Gas Rates

	Choke (inches)	Pressure (psig)	Gas Rate (Mcf/d)

* Recovery from multiple tests



**TRILOBITE
TESTING, INC.**

DRILL STEM TEST REPORT

TOOL DIAGRAM

John O Farmer Inc

18-4s-18w Phillips,KS

PO Box 352
Russell, KS 67665

Hanchett B #2

Job Ticket: 53616

DST#: 3

ATTN: Austin Klaus

Test Start: 2013.05.01 @ 22:22:00

Tool Information

Drill Pipe:	Length: 3136.00 ft	Diameter: 3.80 inches	Volume: 43.99 bbl	Tool Weight: 2000.00 lb
Heavy Wt. Pipe:	Length: 0.00 ft	Diameter: 2.75 inches	Volume: 0.00 bbl	Weight set on Packer: 25000.00 lb
Drill Collar:	Length: 121.00 ft	Diameter: 2.25 inches	Volume: 0.60 bbl	Weight to Pull Loose: 42000.00 lb
			<u>Total Volume: 44.59 bbl</u>	Tool Chased 0.00 ft
Drill Pipe Above KB:	29.00 ft			String Weight: Initial 39000.00 lb
Depth to Top Packer:	3248.00 ft			Final 39000.00 lb
Depth to Bottom Packer:	ft			
Interval between Packers:	100.00 ft			
Tool Length:	120.00 ft			
Number of Packers:	2	Diameter: 6.75 inches		

Tool Comments:

Tool Description	Length (ft)	Serial No.	Position	Depth (ft)	Accum. Lengths
------------------	-------------	------------	----------	------------	----------------

Shut In Tool	5.00			3233.00	
Hydraulic tool	5.00			3238.00	
Packer	5.00			3243.00	20.00 Bottom Of Top Packer
Packer	5.00			3248.00	
Stubb	1.00			3249.00	
Perforations	4.00			3253.00	
Change Over Sub	1.00			3254.00	
Recorder	0.00	6752	Inside	3254.00	
Recorder	0.00	8322	Outside	3254.00	
Blank Spacing	90.00			3344.00	
Change Over Sub	1.00			3345.00	
Bullnose	3.00			3348.00	100.00 Bottom Packers & Anchor

Total Tool Length: 120.00



**TRILOBITE
TESTING, INC.**

DRILL STEM TEST REPORT

FLUID SUMMARY

John O Farmer Inc

18-4s-18w Phillips,KS

PO Box 352
Russell, KS 67665

Hanchett B #2

Job Ticket: 53616

DST#: 3

ATTN: Austin Klaus

Test Start: 2013.05.01 @ 22:22:00

Mud and Cushion Information

Mud Type: Gel Chem

Cushion Type:

Oil API:

deg API

Mud Weight: 9.00 lb/gal

Cushion Length:

ft

Water Salinity:

ppm

Viscosity: 46.00 sec/qt

Cushion Volume:

bbf

Water Loss: 7.97 in³

Gas Cushion Type:

Resistivity: ohm.m

Gas Cushion Pressure:

psig

Salinity: 500.00 ppm

Filter Cake: 2.00 inches

Recovery Information

Recovery Table

Length ft	Description	Volume bbf
6.00	Mud 100%	0.030

Total Length: 6.00 ft Total Volume: 0.030 bbf

Num Fluid Samples: 0

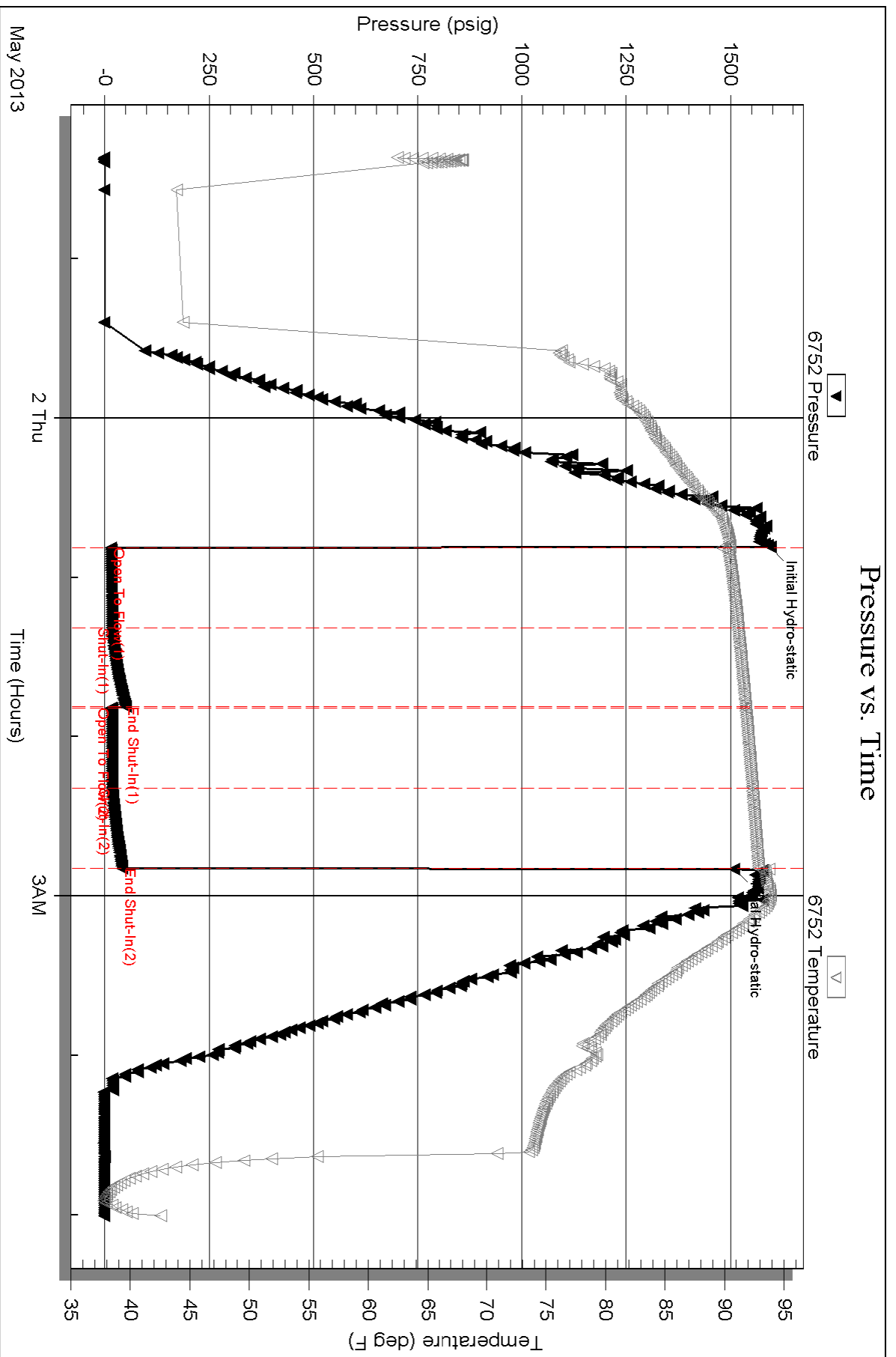
Num Gas Bombs: 0

Serial #:

Laboratory Name:

Laboratory Location:

Recovery Comments:

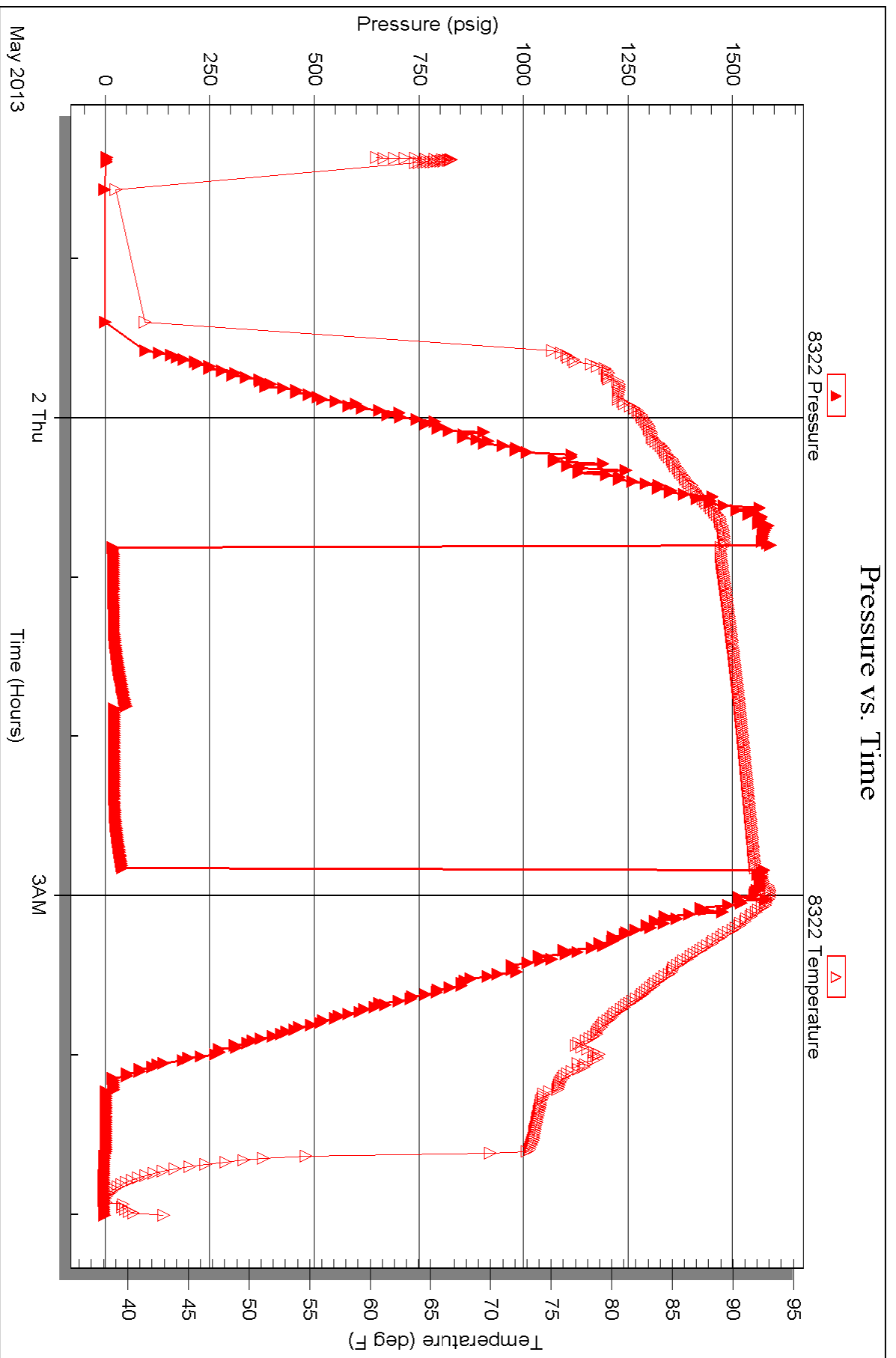


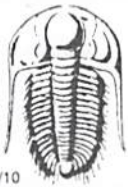
Serial #: 8322

Outside John O Farmer Inc

Hanchett B #2

DST Test Number: 3





TRILOBITE TESTING INC.

1515 Commerce Parkway • Hays, Kansas 67601

Test Ticket

NO. 53614

4/10

Well Name & No. Hanchett B #2 Test No. 1 Date 4-30-13
 Company John O. Farmer Inc. Elevation 1931 KB 1924 GL
 Address 370 W. Wichita Ave Box 352 Russell KS. 67665-2635
 Co. Rep / Geo. Austin Klaus Rig WW #12
 Location: Sec. 18 Twp. 4^s Rge. 18^w Co. Phillips State KS

Interval Tested 3163-3210 Zone Tested LKC "C-D"
 Anchor Length 47 Drill Pipe Run ~~3163~~ 3039 Mud Wt. 8
 Top Packer Depth 3158 Drill Collars Run 121 Vis 55
 Bottom Packer Depth 3163 Wt. Pipe Run 0 WL 6.4
 Total Depth 3210 Chlorides 300 ppm System LCM 2.5

Blow Description IFP - Surface Blow Building to 1 in. in 5min
ISIP - No Blow
FFP - Surface Blow in 3min. Building to 1 1/4 in. in 12min
FSIP - No Blow

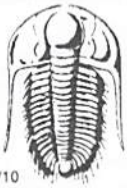
Rec	Feet of	%gas	%oil	%water	%mud
<u>146</u>	<u>OCM</u>	<u>30</u>		<u>70</u>	
<u>5</u>	<u>CO</u>	<u>100</u>			

Rec Total 151 BHT 97 Gravity 35 API RW _____ @ _____ ° F Chlorides _____ ppm

(A) Initial Hydrostatic 1544 Test 1150 T-On Location 14:00
 (B) First Initial Flow 16 Jars _____ T-Started 15:00
 (C) First Final Flow 49 Safety Joint _____ T-Open 16:33
 (D) Initial Shut-In 964 Circ Sub _____ T-Pulled 19:33
 (E) Second Initial Flow 59 Hourly Standby _____ T-Out 21:19
 (F) Second Final Flow 74 Mileage 126 RT 195.30 Comments _____
 (G) Final Shut-In 962 Sampler _____
 (H) Final Hydrostatic 1464 Straddle _____

Initial Open 30 Shale Packer _____
 Initial Shut-In 30 Shale Packer _____
 Final Flow 60 Extra Packer _____
 Final Shut-In 60 Extra Recorder _____
 Sub Total 0
 Total 1345.30
 MP/DST Disc't _____
 Sub Total 1345.30

Approved By _____ Our Representative [Signature]
 Trilobite Testing Inc. shall not be liable for damaged of any kind of the property or personnel of the one for whom a test is made, or for any loss suffered or sustained, directly or indirectly, through the use of its equipment, or its statements or opinion concerning the results of any test, tools lost or damaged in the hole shall be paid for at cost by the party for whom the test is made.



TRILOBITE TESTING INC.

1515 Commerce Parkway • Hays, Kansas 67601

Test Ticket

NO. 53615

Well Name & No. HANCHETT B # 2 Test No. # 2 Date 5-1-13
 Company John O. Farmer Inc. Elevation 1931 KB 1924 GL
 Address 370 W. WICHITA Ave Box 352 Russell Ks 67665-2635
 Co. Rep / Geo. Austin Klaus Rig WW#12
 Location: Sec. 18 Twp. 4^s Rge. 18 Co. Phillips State Ks.

Interval Tested 3208-3254 Zone Tested LKC "E-2"
 Anchor Length 46 Drill Pipe Run 3101 Mud Wt. 8
 Top Packer Depth 3203 Drill Collars Run 121 Vis 55
 Bottom Packer Depth 3208 Wt. Pipe Run 0 WL 6.4
 Total Depth 3254 Chlorides 300 ppm System LCM 2.5

Blow Description IFP- No Blow
ISIP- No Blow
FFP- No Blow
FSIP- No Blow

Rec	Feet of	%gas	%oil	%water	%mud
<u>3</u>	<u>OCM</u>	<u>2</u>		<u>98</u>	
Rec	Feet of	%gas	%oil	%water	%mud
Rec	Feet of	%gas	%oil	%water	%mud
Rec	Feet of	%gas	%oil	%water	%mud

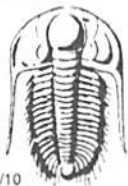
Rec Total 3 BHT 96 Gravity _____ API RW _____ @ _____ ° F Chlorides _____ ppm

(A) Initial Hydrostatic 1558 Test 1150 T-On Location 4:40
 (B) First Initial Flow 14 Jars _____ T-Started 5:20
 (C) First Final Flow 22 Safety Joint _____ T-Open 7:52
 (D) Initial Shut-In 901 Circ Sub _____ T-Pulled 9:52
 (E) Second Initial Flow 24 Hourly Standby _____ T-Out 11:39
 (F) Second Final Flow 30 Mileage 126 RT 195.30 Comments _____
 (G) Final Shut-In 887 Sampler _____
 (H) Final Hydrostatic 1542 Straddle _____ Ruined Shale Packer _____

Initial Open 30 Shale Packer _____ Ruined Packer _____
 Initial Shut-In 30 Extra Packer _____ Extra Copies _____
 Final Flow 30 Extra Recorder _____ Sub Total 0
 Final Shut-In 30 Day Standby _____ Total 1345.30
 Accessibility _____ MP/DST Disc't _____
 Sub Total 1345.30

Approved By _____ Our Representative [Signature]

Trilobite Testing Inc. shall not be liable for damaged of any kind of the property or personnel of the one for whom a test is made, or for any loss suffered or sustained, directly or indirectly, through the use of its equipment, or its statements or opinion concerning the results of any test, tools lost or damaged in the hole shall be paid for at cost by the party for whom the test is made.



TRILOBITE TESTING INC.

1515 Commerce Parkway • Hays, Kansas 67601

Test Ticket

NO. 53616

4/10

Well Name & No. Hanchett B #2 Test No. 3 Date 5-1-13
 Company John O. Farmer Inc. Elevation 1931 KB 1924 GL
 Address 370 W. Wichita Ave Box 352 Russell Ks. 67665-2635
 Co. Rep / Geo. Austin Klaus Rig WW #12
 Location: Sec. 18 Twp. 4^s Rge. 18^w Co. Phillips State KS

Interval Tested 3248-3348 Zone Tested LKC "H-K"
 Anchor Length 100 Drill Pipe Run 3136 Mud Wt. 8.7
 Top Packer Depth 3243 Drill Collars Run 121 Vis 46
 Bottom Packer Depth 3248 Wt. Pipe Run 0 WL 8.0
 Total Depth 3348 Chlorides 500 ppm System LCM 2

Blow Description IFP-Surface Blow Died in 28min
ISIP- No Blow
FFP- No Blow
FSIP- No Blow

Rec	Feet of	%gas	%oil	%water	%mud
<u>6</u>	<u>Mud</u>			<u>100</u>	
Rec	Feet of	%gas	%oil	%water	%mud
Rec	Feet of	%gas	%oil	%water	%mud
Rec	Feet of	%gas	%oil	%water	%mud

Rec Total 6 BHT 93 Gravity _____ API RW _____ @ _____ ° F Chlorides _____ ppm

(A) Initial Hydrostatic 1594 Test 1150 T-On Location 20:47
 (B) First Initial Flow 14 Jars _____ T-Started 22:22
 (C) First Final Flow 16 Safety Joint _____ T-Open 00:49
 (D) Initial Shut-In 49 Circ Sub _____ T-Pulled 02:49
 (E) Second Initial Flow 16 Hourly Standby _____ T-Out 05:01
 (F) Second Final Flow 17 Mileage 126 RT 195.30 Comments _____
 (G) Final Shut-In 41 Sampler _____
 (H) Final Hydrostatic 1508 Straddle _____ Ruined Shale Packer _____
 Shale Packer _____ Ruined Packer _____
 Extra Packer _____ Extra Copies _____
 Initial Open 30 Extra Recorder _____ Sub Total 0
 Initial Shut-In 30 Day Standby _____ Total 1345.30
 Final Flow 30 Accessibility _____ MP/DST Disc't _____
 Final Shut-In 30 Sub Total 1345.30

Approved By _____

Our Representative _____

Trilobite Testing Inc. shall not be liable for damaged of any kind of the property or personnel of the one for whom a test is made, or for any loss suffered or sustained, directly or indirectly, through the use of its equipment, or its statements or opinion concerning the results of any test, tools lost or damaged in the hole shall be paid for at cost by the party for whom the test is made.