



DRILL STEM TEST REPORT

Prepared For: **H&C Oil Operating, Inc**

PO Box 86
Plainville KS 67663

ATTN: Marc Dowing

25-9s-25w Graham,KS

North Fork Farms #25-2

Start Date: 2013.07.29 @ 07:51:04

End Date: 2013.07.29 @ 15:09:54

Job Ticket #: 54378 DST #: 1

Trilobite Testing, Inc

PO Box 362 Hays, KS 67601

ph: 785-625-4778 fax: 785-625-5620

Printed: 2013.08.02 @ 10:17:06

H&C Oil Operating, Inc

North Fork Farms #25-2

25-9s-25w Graham,KS

DST # 1

LKC "C"

2013.07.29



**TRILOBITE
TESTING, INC.**

DRILL STEM TEST REPORT

H&C Oil Operating, Inc
PO Box 86
Plainville KS 67663
ATTN: Marc Dowling

North Fork Farms #25-2
25-9s-25w Graham,KS
Job Ticket: 54378 **DST#: 1**
Test Start: 2013.07.29 @ 07:51:04

GENERAL INFORMATION:

Formation: **LKC "C"**
Deviated: No Whipstock: ft (KB)
Time Tool Opened: 10:28:34
Time Test Ended: 15:09:54
Interval: **3928.00 ft (KB) To 3956.00 ft (KB) (TVD)**
Total Depth: 3956.00 ft (KB) (TVD)
Hole Diameter: 7.88 inches Hole Condition: Good
Test Type: Conventional Bottom Hole (Initial)
Tester: Tate Lang
Unit No: 41
Reference Elevations: 2587.00 ft (KB)
2582.00 ft (CF)
KB to GR/CF: 5.00 ft

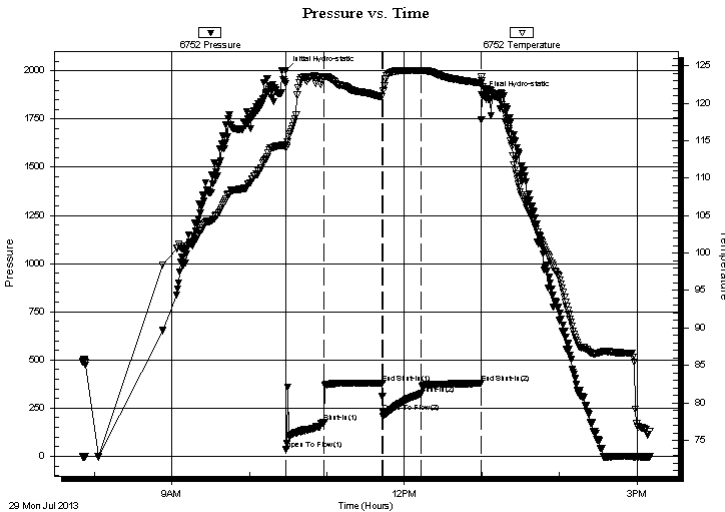
Serial #: 6752

Inside

Press @ Run Depth: 324.74 psig @ 3939.00 ft (KB) Capacity: 8000.00 psig
Start Date: 2013.07.29 End Date: 2013.07.29 Last Calib.: 2013.07.29
Start Time: 07:51:05 End Time: 15:09:54 Time On Btm: 2013.07.29 @ 10:28:14
Time Off Btm: 2013.07.29 @ 12:59:43

TEST COMMENT: B.O.B. In 5 mins.
Dead no blow back
B.O.B. In 6 mins.
Dead no blow back

PRESSURE SUMMARY



Time (Min.)	Pressure (psig)	Temp (deg F)	Annotation
0	2002.18	114.36	Initial Hydro-static
1	35.39	114.06	Open To Flow (1)
30	175.86	123.38	Shut-In(1)
75	381.09	120.87	End Shut-In(1)
75	227.13	120.92	Open To Flow (2)
105	324.74	124.33	Shut-In(2)
152	377.88	122.67	End Shut-In(2)
152	1873.55	122.98	Final Hydro-static

Recovery

Length (ft)	Description	Volume (bbl)
380.00	98%W 2%M	5.33
160.00	60%W 40%M few oil spots	2.24

Gas Rates

Choke (inches)	Pressure (psig)	Gas Rate (Mcf/d)



**TRILOBITE
TESTING, INC.**

DRILL STEM TEST REPORT

TOOL DIAGRAM

H&C Oil Operating, Inc

North Fork Farms #25-2

PO Box 86
Plainville KS 67663

25-9s-25w Graham,KS

ATTN: Marc Dowling

Job Ticket: 54378

DST#: 1

Test Start: 2013.07.29 @ 07:51:04

Tool Information

Drill Pipe:	Length: 3936.00 ft	Diameter: 3.80 inches	Volume: 55.21 bbl	Tool Weight:	2000.00 lb
Heavy Wt. Pipe:	Length: 0.00 ft	Diameter: 0.00 inches	Volume: 0.00 bbl	Weight set on Packer:	20000.00 lb
Drill Collar:	Length: 0.00 ft	Diameter: 2.25 inches	Volume: 0.00 bbl	Weight to Pull Loose:	60000.00 lb
			<u>Total Volume: 55.21 bbl</u>	Tool Chased	0.00 ft
Drill Pipe Above KB:	18.00 ft			String Weight: Initial	40000.00 lb
Depth to Top Packer:	3938.00 ft			Final	42000.00 lb
Depth to Bottom Packer:	ft				
Interval between Packers:	18.00 ft				
Tool Length:	38.00 ft				
Number of Packers:	2	Diameter: 6.75 inches			
Tool Comments:					

Tool Description	Length (ft)	Serial No.	Position	Depth (ft)	Accum. Lengths
------------------	-------------	------------	----------	------------	----------------

Shut In Tool	5.00			3923.00	
Hydraulic tool	5.00			3928.00	
Packer	5.00			3933.00	20.00 Bottom Of Top Packer
Packer	5.00			3938.00	
Stubb	1.00			3939.00	
Recorder	0.00	6752	Inside	3939.00	
Recorder	0.00	8322	Outside	3939.00	
Perforations	14.00			3953.00	
Bullnose	3.00			3956.00	18.00 Bottom Packers & Anchor
Total Tool Length:	38.00				



**TRILOBITE
TESTING, INC.**

DRILL STEM TEST REPORT

FLUID SUMMARY

H&C Oil Operating, Inc

North Fork Farms #25-2

PO Box 86
Plainville KS 67663

25-9s-25w Graham,KS

Job Ticket: 54378 **DST#: 1**

ATTN: Marc Dowling

Test Start: 2013.07.29 @ 07:51:04

Mud and Cushion Information

Mud Type: Gel Chem	Cushion Type:	Oil API:	deg API
Mud Weight: 9.00 lb/gal	Cushion Length: ft	Water Salinity:	50000 ppm
Viscosity: 55.00 sec/qt	Cushion Volume: bbl		
Water Loss: 6.78 in ³	Gas Cushion Type:		
Resistivity: ohm.m	Gas Cushion Pressure: psig		
Salinity: 1000.00 ppm			
Filter Cake: 1.00 inches			

Recovery Information

Recovery Table

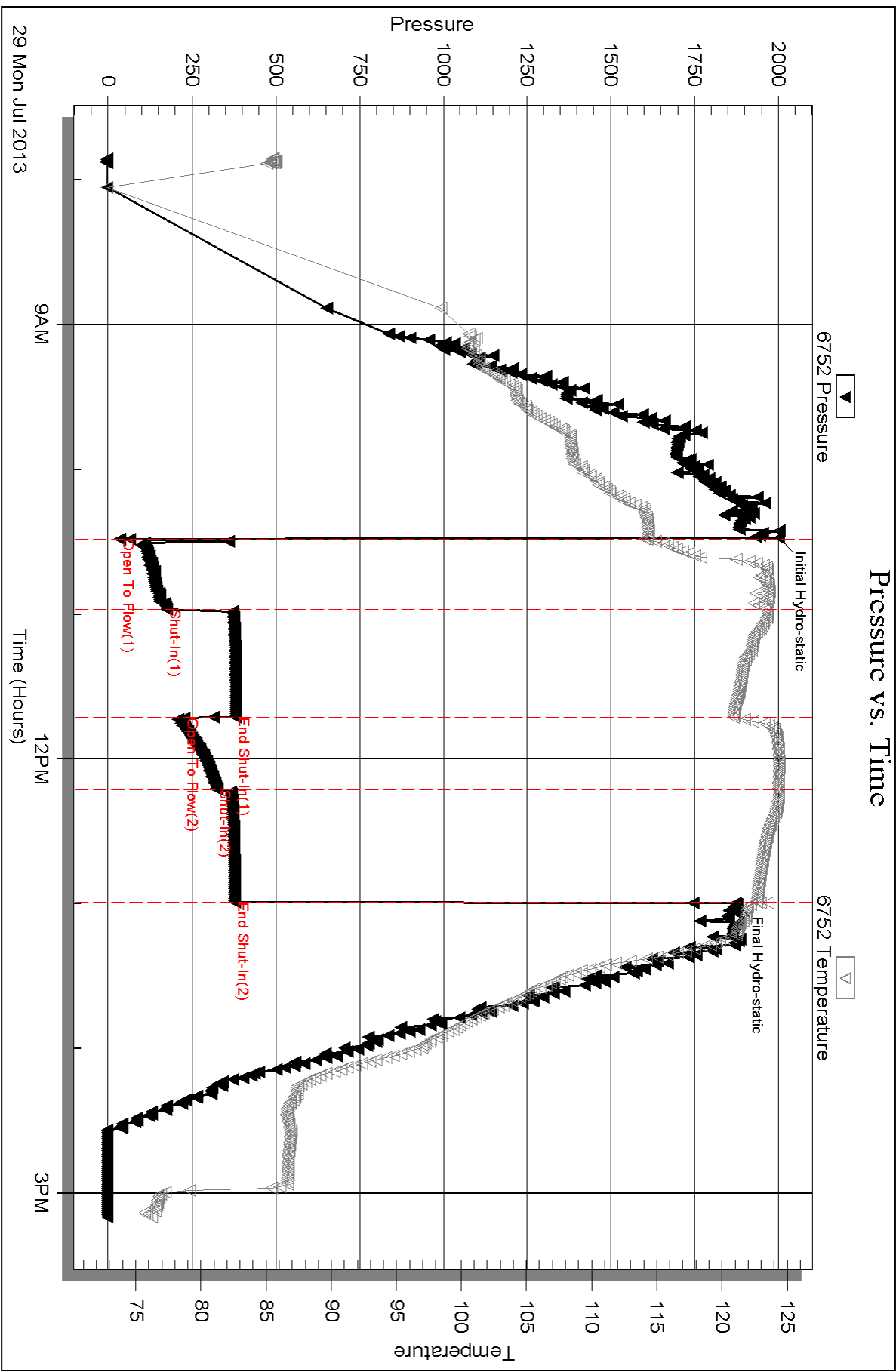
Length ft	Description	Volume bbl
380.00	98%W 2%M	5.330
160.00	60%W 40%M few oil spots	2.244

Total Length: 540.00 ft Total Volume: 7.574 bbl

Num Fluid Samples: 0 Num Gas Bombs: 0 Serial #:

Laboratory Name: Laboratory Location:

Recovery Comments: RW .150 @ 69 = 50,000

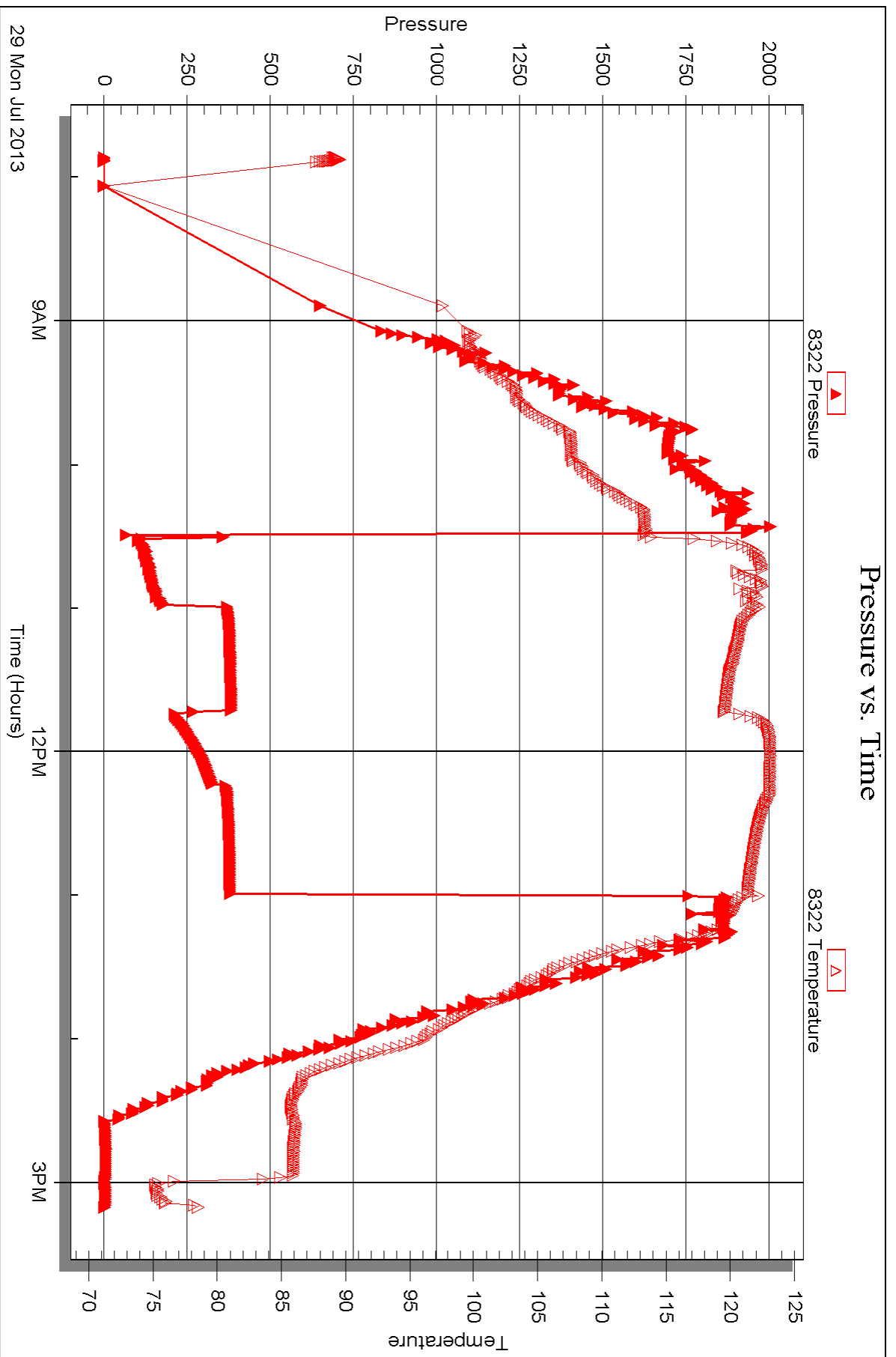


Serial #: 8322

Outside H&C Oil Operating, Inc

25-95-25w Graham,KS

DST Test Number: 1



Triobite Testing, Inc

Ref. No: 54378

Printed: 2013.08.02 @ 10:17:10



DRILL STEM TEST REPORT

Prepared For: **H&C Oil Operating, Inc**

PO Box 86
Plainville KS 67663

ATTN: Marc Dowing

25-9s-25w Graham,KS

North Fork Farms #25-2

Start Date: 2013.07.29 @ 21:38:15

End Date: 2013.07.30 @ 04:59:05

Job Ticket #: 54379 DST #: 2

Trilobite Testing, Inc

PO Box 362 Hays, KS 67601

ph: 785-625-4778 fax: 785-625-5620

Printed: 2013.08.02 @ 10:16:18

H&C Oil Operating, Inc

North Fork Farms #25-2

25-9s-25w Graham,KS

DST # 2

LKC "D"

2013.07.29



**TRILOBITE
TESTING, INC.**

DRILL STEM TEST REPORT

H&C Oil Operating, Inc
PO Box 86
Plainville KS 67663
ATTN: Marc Dowling

North Fork Farms #25-2
25-9s-25w Graham,KS
Job Ticket: 54379 **DST#: 2**
Test Start: 2013.07.29 @ 21:38:15

GENERAL INFORMATION:

Formation: **LKC "D"**
Deviated: No Whipstock: ft (KB)
Time Tool Opened: 23:55:35
Time Test Ended: 04:59:05
Test Type: Conventional Bottom Hole (Reset)
Tester: Tate Lang
Unit No: 41
Interval: **3956.00 ft (KB) To 3980.00 ft (KB) (TVD)**
Reference Elevations: 2587.00 ft (KB)
Total Depth: 3980.00 ft (KB) (TVD) 2582.00 ft (CF)
Hole Diameter: 7.88 inches Hole Condition: Good KB to GR/CF: 5.00 ft

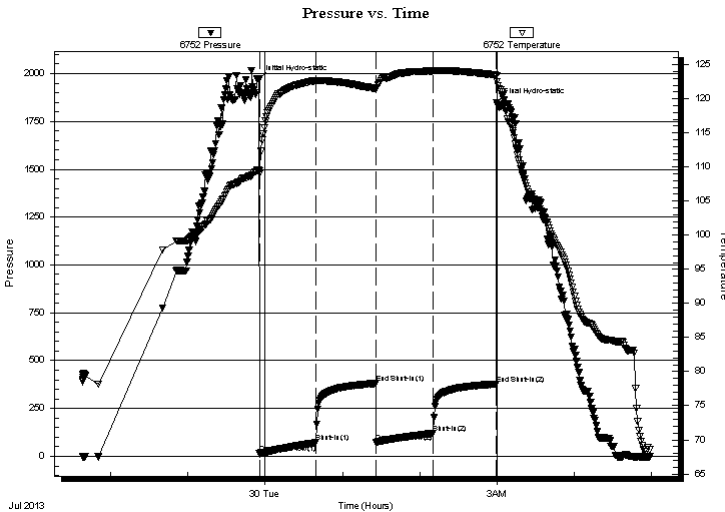
Serial #: 6752

Inside

Press @ Run Depth: 120.36 psig @ 3957.00 ft (KB) Capacity: 8000.00 psig
Start Date: 2013.07.29 End Date: 2013.07.30 Last Calib.: 2013.07.30
Start Time: 21:38:16 End Time: 04:59:05 Time On Btm: 2013.07.29 @ 23:55:15
Time Off Btm: 2013.07.30 @ 02:59:35

TEST COMMENT: B.O.B. in 40 mis.
Dead no blow back
Fair surface blow built to 6 1/2"
Dead no blow back

PRESSURE SUMMARY



Time (Min.)	Pressure (psig)	Temp (deg F)	Annotation
0	1970.97	109.62	Initial Hydro-static
1	13.61	108.98	Open To Flow (1)
45	71.73	122.66	Shut-In(1)
91	380.71	121.49	End Shut-In(1)
91	74.08	121.38	Open To Flow (2)
135	120.36	124.10	Shut-In(2)
184	377.26	123.45	End Shut-In(2)
185	1848.98	123.38	Final Hydro-static

Recovery

Length (ft)	Description	Volume (bbl)
210.00	SMCW 5%M 95%W skim of free oil on top	2.95

* Recovery from multiple tests

Gas Rates

Choke (inches)	Pressure (psig)	Gas Rate (Mcf/d)



**TRILOBITE
TESTING, INC.**

DRILL STEM TEST REPORT

TOOL DIAGRAM

H&C Oil Operating, Inc

North Fork Farms #25-2

PO Box 86
Plainville KS 67663

25-9s-25w Graham,KS

ATTN: Marc Dowling

Job Ticket: 54379

DST#: 2

Test Start: 2013.07.29 @ 21:38:15

Tool Information

Drill Pipe:	Length: 3967.00 ft	Diameter: 3.80 inches	Volume: 55.65 bbl	Tool Weight:	2000.00 lb
Heavy Wt. Pipe:	Length: 0.00 ft	Diameter: 0.00 inches	Volume: 0.00 bbl	Weight set on Packer:	20000.00 lb
Drill Collar:	Length: 0.00 ft	Diameter: 2.25 inches	Volume: 0.00 bbl	Weight to Pull Loose:	55000.00 lb
			<u>Total Volume: 55.65 bbl</u>	Tool Chased	0.00 ft
Drill Pipe Above KB:	31.00 ft			String Weight: Initial	38000.00 lb
Depth to Top Packer:	3956.00 ft			Final	39000.00 lb
Depth to Bottom Packer:	ft				
Interval between Packers:	24.00 ft				
Tool Length:	44.00 ft				
Number of Packers:	2	Diameter: 6.75 inches			

Tool Comments:

Tool Description

Tool Description	Length (ft)	Serial No.	Position	Depth (ft)	Accum. Lengths
Shut In Tool	5.00			3941.00	
Hydraulic tool	5.00			3946.00	
Packer	5.00			3951.00	20.00 Bottom Of Top Packer
Packer	5.00			3956.00	
Stubb	1.00			3957.00	
Recorder	0.00	6752	Inside	3957.00	
Recorder	0.00	8322	Outside	3957.00	
Perforations	20.00			3977.00	
Bullnose	3.00			3980.00	24.00 Bottom Packers & Anchor
Total Tool Length:	44.00				



**TRILOBITE
TESTING, INC.**

DRILL STEM TEST REPORT

FLUID SUMMARY

H&C Oil Operating, Inc

North Fork Farms #25-2

PO Box 86
Plainville KS 67663

25-9s-25w Graham,KS

ATTN: Marc Dowling

Job Ticket: 54379 **DST#: 2**

Test Start: 2013.07.29 @ 21:38:15

Mud and Cushion Information

Mud Type: Gel Chem

Cushion Type:

Oil API:

deg API

Mud Weight: 9.00 lb/gal

Cushion Length:

ft

Water Salinity:

45000 ppm

Viscosity: 54.00 sec/qt

Cushion Volume:

bbbl

Water Loss: 7.19 in³

Gas Cushion Type:

Resistivity: ohm.m

Gas Cushion Pressure:

psig

Salinity: 1000.00 ppm

Filter Cake: 1.00 inches

Recovery Information

Recovery Table

Length ft	Description	Volume bbbl
210.00	SMCW 5%M 95%W skim of free oil on top	2.946

Total Length: 210.00 ft Total Volume: 2.946 bbl

Num Fluid Samples: 0

Num Gas Bombs: 0

Serial #:

Laboratory Name:

Laboratory Location:

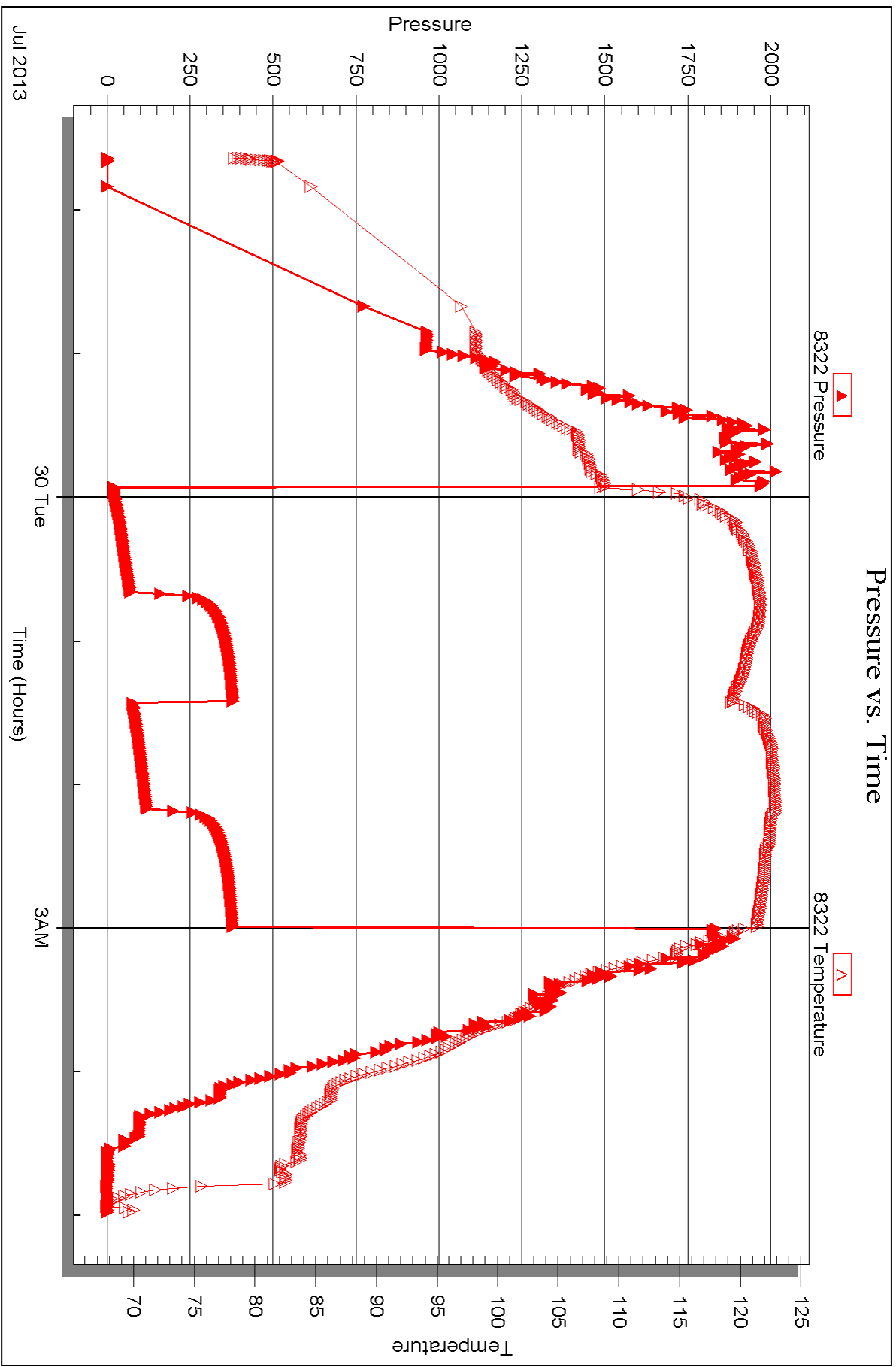
Recovery Comments: RW .214 @ 65 = 45,000

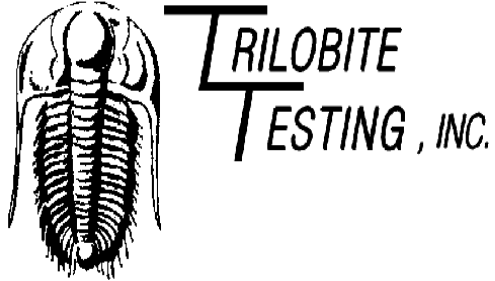
Serial #: 8322

Outside H&C Oil Operating, Inc

25-95-25w Graham,KS

DST Test Number: 2





DRILL STEM TEST REPORT

Prepared For: **H&C Oil Operating, Inc**

PO Box 86
Plainville KS 67663

ATTN: Marc Dowing

25-9s-25w Graham,KS

North Fork Farms #25-2

Start Date: 2013.07.30 @ 17:40:26

End Date: 2013.07.30 @ 23:59:26

Job Ticket #: 54380 DST #: 3

Trilobite Testing, Inc

PO Box 362 Hays, KS 67601

ph: 785-625-4778 fax: 785-625-5620

Printed: 2013.08.02 @ 10:15:40



TRILOBITE TESTING, INC.

DRILL STEM TEST REPORT

H&C Oil Operating, Inc
 PO Box 86
 Plainville KS 67663
 ATTN: Marc Dowling

North Fork Farms #25-2
25-9s-25w Graham,KS
 Job Ticket: 54380 **DST#: 3**
 Test Start: 2013.07.30 @ 17:40:26

GENERAL INFORMATION:

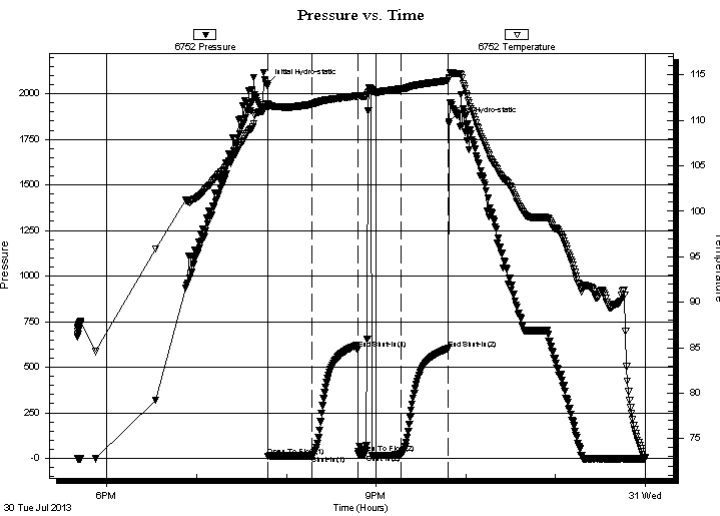
Formation: "H"
 Deviated: No Whipstock: ft (KB)
 Time Tool Opened: 19:47:46
 Time Test Ended: 23:59:26
 Interval: **4044.00 ft (KB) To 4078.00 ft (KB) (TVD)**
 Total Depth: 4078.00 ft (KB) (TVD)
 Hole Diameter: 7.88 inches Hole Condition: Good
 Test Type: Conventional Bottom Hole (Reset)
 Tester: Tate Lang
 Unit No: 41
 Reference Elevations: 2587.00 ft (KB)
 2582.00 ft (CF)
 KB to GR/CF: 5.00 ft

Serial #: 6752

Inside

Press @ Run Depth: 19.36 psig @ 4042.00 ft (KB) Capacity: 8000.00 psig
 Start Date: 2013.07.30 End Date: 2013.07.30 Last Calib.: 2013.07.31
 Start Time: 17:40:27 End Time: 23:59:26 Time On Btm: 2013.07.30 @ 19:47:36
 Time Off Btm: 2013.07.30 @ 21:48:36

TEST COMMENT: Weak surface blow
 Dead no blow back
 Tried flushing tool couldnt get it to flush Dead no blow
 Dead no blow back



PRESSURE SUMMARY

Time (Min.)	Pressure (psig)	Temp (deg F)	Annotation
0	2054.53	111.87	Initial Hydro-static
1	12.15	111.39	Open To Flow (1)
30	17.01	111.79	Shut-In(1)
60	600.25	112.70	End Shut-In(1)
61	24.95	112.54	Open To Flow (2)
89	19.36	113.45	Shut-In(2)
121	601.83	114.40	End Shut-In(2)
121	1847.95	114.59	Final Hydro-static

Recovery

Length (ft)	Description	Volume (bbl)
10.00	100%M	0.14

* Recovery from multiple tests

Gas Rates

Choke (inches)	Pressure (psig)	Gas Rate (Mcf/d)



**TRILOBITE
TESTING, INC.**

DRILL STEM TEST REPORT

TOOL DIAGRAM

H&C Oil Operating, Inc

North Fork Farms #25-2

PO Box 86
Plainville KS 67663

25-9s-25w Graham,KS

ATTN: Marc Dowling

Job Ticket: 54380

DST#: 3

Test Start: 2013.07.30 @ 17:40:26

Tool Information

Drill Pipe:	Length: 4030.00 ft	Diameter: 3.80 inches	Volume: 56.53 bbl	Tool Weight:	2000.00 lb
Heavy Wt. Pipe:	Length: 0.00 ft	Diameter: 0.00 inches	Volume: 0.00 bbl	Weight set on Packer:	20000.00 lb
Drill Collar:	Length: 0.00 ft	Diameter: 2.25 inches	Volume: 0.00 bbl	Weight to Pull Loose:	lb
			<u>Total Volume: 56.53 bbl</u>	Tool Chased	0.00 ft
Drill Pipe Above KB:	9.00 ft			String Weight: Initial	38000.00 lb
Depth to Top Packer:	4041.00 ft			Final	38000.00 lb
Depth to Bottom Packer:	ft				
Interval between Packers:	37.00 ft				
Tool Length:	57.00 ft				
Number of Packers:	2	Diameter: 6.75 inches			
Tool Comments:					

Tool Description	Length (ft)	Serial No.	Position	Depth (ft)	Accum. Lengths
------------------	-------------	------------	----------	------------	----------------

Shut In Tool	5.00			4026.00	
Hydraulic tool	5.00			4031.00	
Packer	5.00			4036.00	20.00 Bottom Of Top Packer
Packer	5.00			4041.00	
Stubb	1.00			4042.00	
Recorder	0.00	6752	Inside	4042.00	
Recorder	0.00	8322	Outside	4042.00	
Perforations	33.00			4075.00	
Bullnose	3.00			4078.00	37.00 Bottom Packers & Anchor
Total Tool Length:	57.00				



**TRILOBITE
TESTING, INC.**

DRILL STEM TEST REPORT

FLUID SUMMARY

H&C Oil Operating, Inc

North Fork Farms #25-2

PO Box 86
Plainville KS 67663

25-9s-25w Graham,KS

Job Ticket: 54380 **DST#: 3**

ATTN: Marc Dowling

Test Start: 2013.07.30 @ 17:40:26

Mud and Cushion Information

Mud Type: Gel Chem	Cushion Type:	Oil API:	deg API
Mud Weight: 9.00 lb/gal	Cushion Length: ft	Water Salinity:	ppm
Viscosity: 55.00 sec/qt	Cushion Volume: bbl		
Water Loss: 6.78 in ³	Gas Cushion Type:		
Resistivity: ohm.m	Gas Cushion Pressure: psig		
Salinity: 1000.00 ppm			
Filter Cake: 1.00 inches			

Recovery Information

Recovery Table

Length ft	Description	Volume bbl
10.00	100%M	0.140

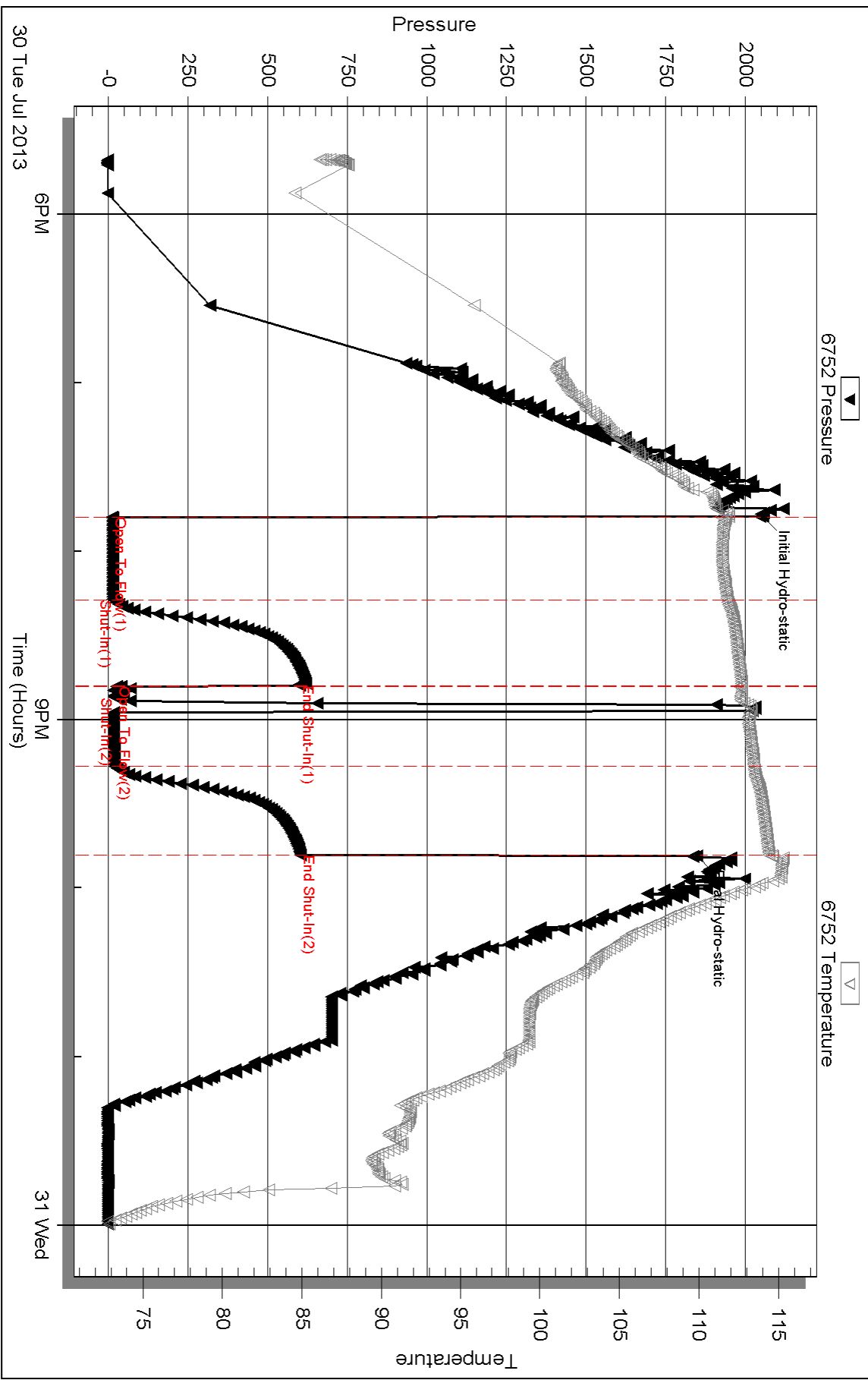
Total Length: 10.00 ft Total Volume: 0.140 bbl

Num Fluid Samples: 0 Num Gas Bombs: 0 Serial #:

Laboratory Name: Laboratory Location:

Recovery Comments:

Pressure vs. Time

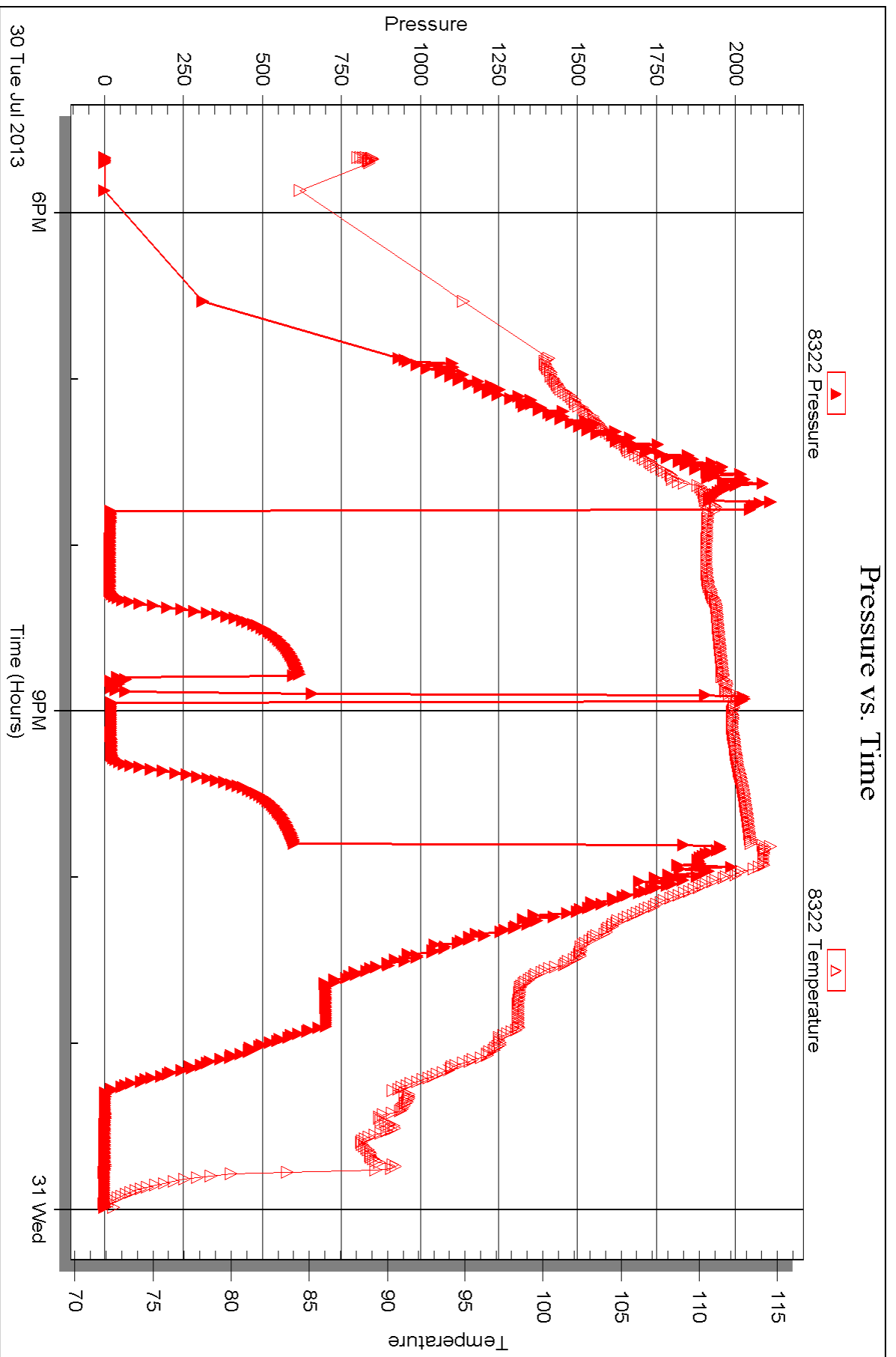


Serial #: 8322

Outside H&C Oil Operating, Inc

25-95-25w Graham,KS

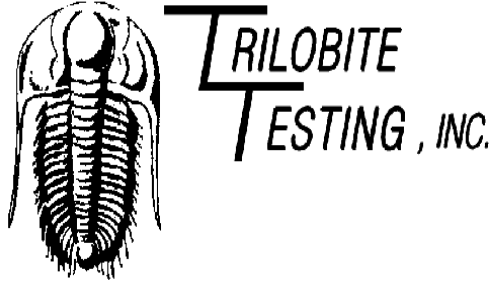
DST Test Number: 3



Triobite Testing, Inc

Ref. No: 54380

Printed: 2013.08.02 @ 10:15:43



DRILL STEM TEST REPORT

Prepared For: **H&C Oil Operating, Inc**

PO Box 86
Plainville KS 67663

ATTN: Marc Dowing

25-9s-25w Graham,KS

North Fork Farms #25-2

Start Date: 2013.07.31 @ 09:58:20

End Date: 2013.07.31 @ 16:08:29

Job Ticket #: 54381 DST #: 4

Trilobite Testing, Inc

PO Box 362 Hays, KS 67601

ph: 785-625-4778 fax: 785-625-5620

Printed: 2013.08.02 @ 10:14:59



TRILOBITE TESTING, INC.

DRILL STEM TEST REPORT

H&C Oil Operating, Inc
 PO Box 86
 Plainville KS 67663
 ATTN: Marc Dowling

North Fork Farms #25-2
25-9s-25w Graham,KS
 Job Ticket: 54381 **DST#: 4**
 Test Start: 2013.07.31 @ 09:58:20

GENERAL INFORMATION:

Formation: **I&J**
 Deviated: No Whipstock: ft (KB)
 Time Tool Opened: 12:16:30
 Time Test Ended: 16:08:29
 Interval: **4072.00 ft (KB) To 4117.00 ft (KB) (TVD)**
 Total Depth: 4117.00 ft (KB) (TVD)
 Hole Diameter: 7.88 inches Hole Condition: Good
 Test Type: Conventional Bottom Hole (Reset)
 Tester: Tate Lang
 Unit No: 41
 Reference Elevations: 2587.00 ft (KB)
 2582.00 ft (CF)
 KB to GR/CF: 5.00 ft

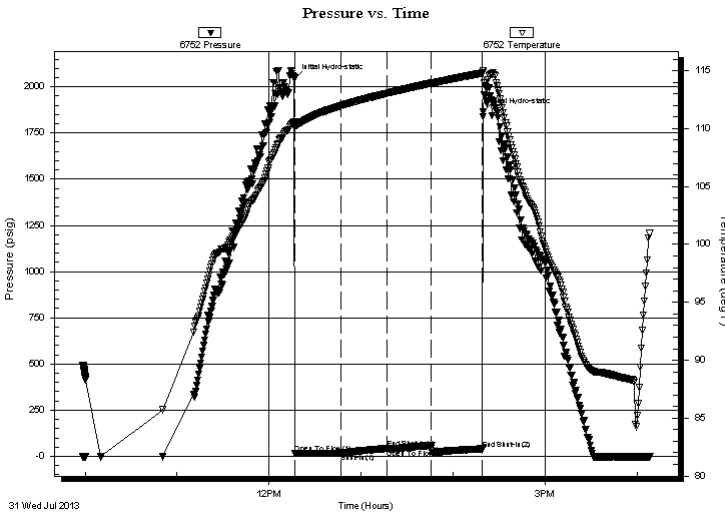
Serial #: 6752

Inside

Press @RunDepth: 59.98 psig @ 4080.00 ft (KB) Capacity: 8000.00 psig
 Start Date: 2013.07.31 End Date: 2013.07.31 Last Calib.: 2013.07.31
 Start Time: 09:58:21 End Time: 16:08:30 Time On Btm: 2013.07.31 @ 12:16:20
 Time Off Btm: 2013.07.31 @ 14:19:29

TEST COMMENT: Weak surface blow built to 1/2"
 Dead no blow back
 Dead no blow
 Dead no blow back

PRESSURE SUMMARY



Time (Min.)	Pressure (psig)	Temp (deg F)	Annotation
0	2044.92	110.55	Initial Hydro-static
1	16.35	110.05	Open To Flow (1)
31	18.23	111.98	Shut-In(1)
61	41.74	113.04	End Shut-In(1)
61	38.27	113.05	Open To Flow (2)
90	59.98	113.92	Shut-In(2)
123	39.95	114.79	End Shut-In(2)
124	1862.93	114.96	Final Hydro-static

Recovery

Length (ft)	Description	Volume (bbl)
5.00	100% m w ith oil spots	0.07

* Recovery from multiple tests

Gas Rates

Choke (inches)	Pressure (psig)	Gas Rate (Mcf/d)



**TRILOBITE
TESTING, INC.**

DRILL STEM TEST REPORT

TOOL DIAGRAM

H&C Oil Operating, Inc

North Fork Farms #25-2

PO Box 86
Plainville KS 67663

25-9s-25w Graham,KS

ATTN: Marc Dowling

Job Ticket: 54381

DST#: 4

Test Start: 2013.07.31 @ 09:58:20

Tool Information

Drill Pipe:	Length: 4060.00 ft	Diameter: 3.80 inches	Volume: 56.95 bbl	Tool Weight:	2000.00 lb
Heavy Wt. Pipe:	Length: 0.00 ft	Diameter: 0.00 inches	Volume: 0.00 bbl	Weight set on Packer:	20000.00 lb
Drill Collar:	Length: 0.00 ft	Diameter: 2.25 inches	Volume: 0.00 bbl	Weight to Pull Loose:	48000.00 lb
			<u>Total Volume: 56.95 bbl</u>	Tool Chased	0.00 ft
Drill Pipe Above KB:	8.00 ft			String Weight: Initial	40000.00 lb
Depth to Top Packer:	4072.00 ft			Final	40000.00 lb
Depth to Bottom Packer:	ft				
Interval between Packers:	45.00 ft				
Tool Length:	65.00 ft				
Number of Packers:	2	Diameter: 6.75 inches			

Tool Comments:

Tool Description	Length (ft)	Serial No.	Position	Depth (ft)	Accum. Lengths
------------------	-------------	------------	----------	------------	----------------

Shut In Tool	5.00			4057.00	
Hydraulic tool	5.00			4062.00	
Packer	5.00			4067.00	20.00 Bottom Of Top Packer
Packer	5.00			4072.00	
Stubb	1.00			4073.00	
perforations	7.00			4080.00	
Recorder	0.00	6752	Inside	4080.00	
Recorder	0.00	8322	Outside	4080.00	
change Over Sub	1.00			4081.00	
drill Pipe	32.00			4113.00	
change Over Sub	1.00			4114.00	
Bullnose	3.00			4117.00	45.00 Bottom Packers & Anchor

Total Tool Length: 65.00



**TRILOBITE
TESTING, INC.**

DRILL STEM TEST REPORT

FLUID SUMMARY

H&C Oil Operating, Inc

North Fork Farms #25-2

PO Box 86
Plainville KS 67663

25-9s-25w Graham,KS

Job Ticket: 54381 **DST#: 4**

ATTN: Marc Dowling

Test Start: 2013.07.31 @ 09:58:20

Mud and Cushion Information

Mud Type: Gel Chem	Cushion Type:	Oil API:	deg API
Mud Weight: 9.00 lb/gal	Cushion Length: ft	Water Salinity:	ppm
Viscosity: 60.00 sec/qt	Cushion Volume: bbl		
Water Loss: 7.59 in ³	Gas Cushion Type:		
Resistivity: ohm.m	Gas Cushion Pressure: psig		
Salinity: 1600.00 ppm			
Filter Cake: 1.00 inches			

Recovery Information

Recovery Table

Length ft	Description	Volume bbl
5.00	100% m with oil spots	0.070

Total Length: 5.00 ft Total Volume: 0.070 bbl

Num Fluid Samples: 0 Num Gas Bombs: 0 Serial #:

Laboratory Name: Laboratory Location:

Recovery Comments:

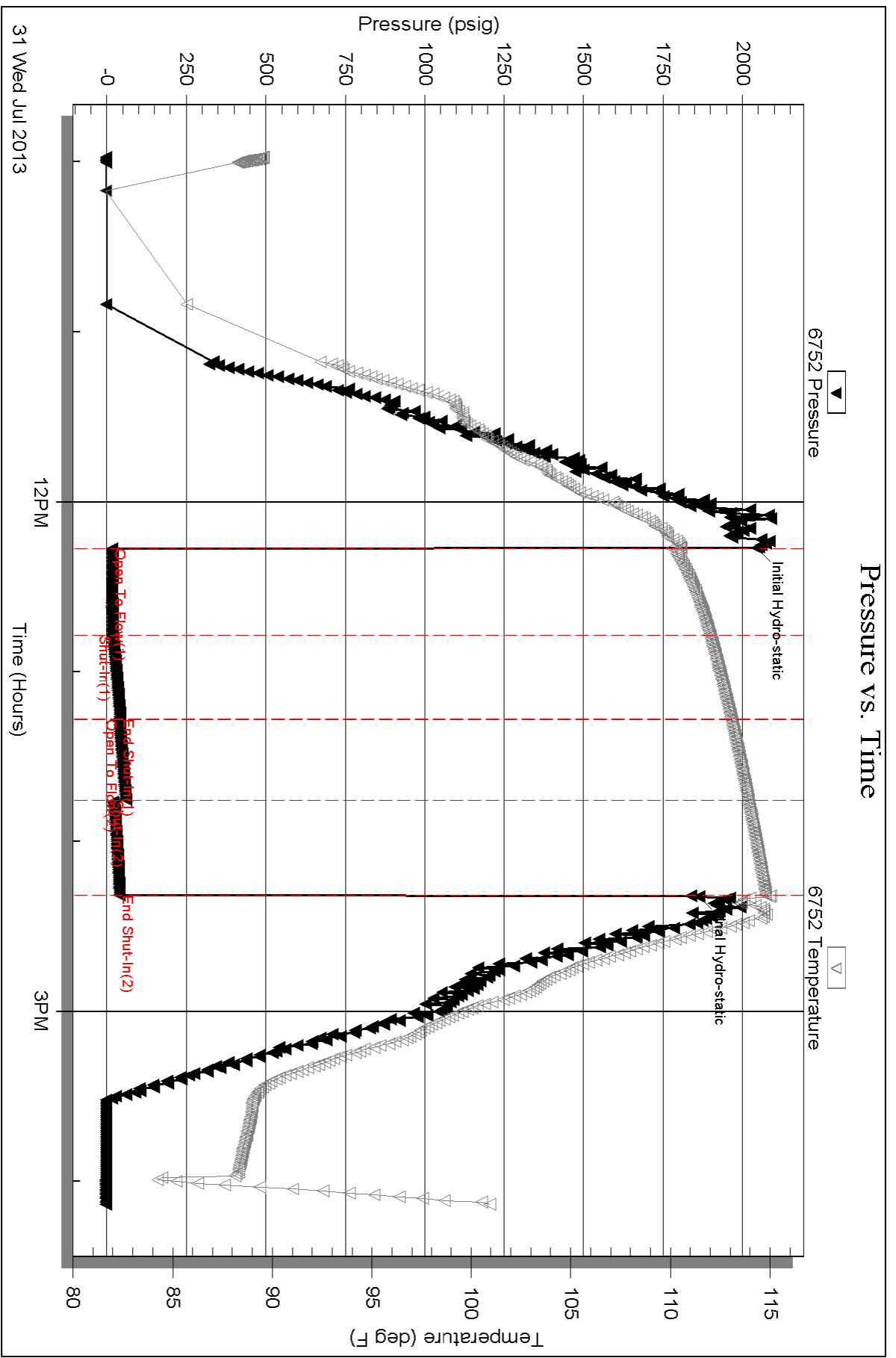
Serial #: 6752

Inside

H&C Oil Operating, Inc

25-95-25w Graham,KS

DST Test Number: 4



Triobite Testing, Inc

Ref. No: 54381

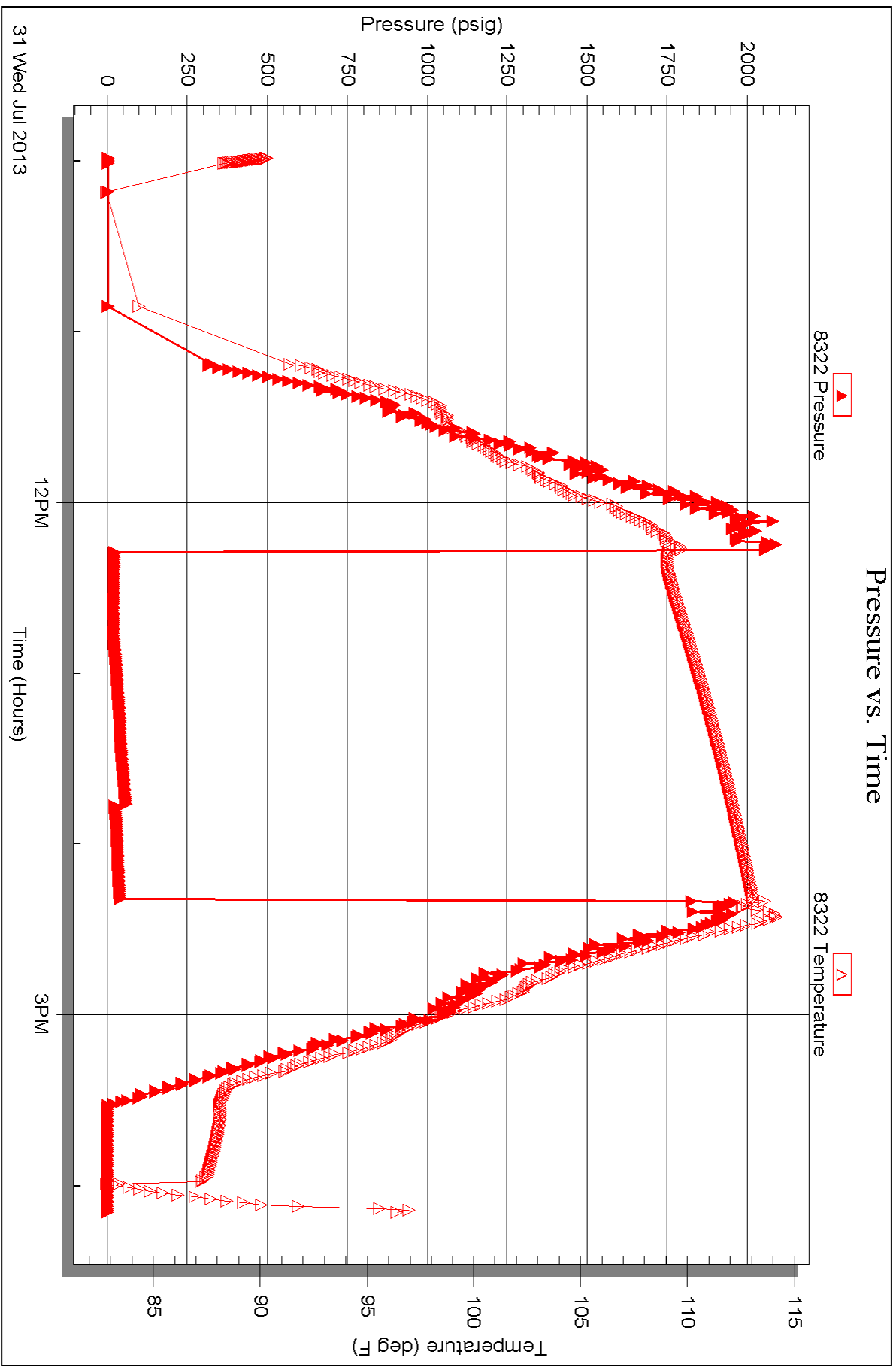
Printed: 2013.08.02 @ 10:15:02

Serial #: 8322

Outside H&C Oil Operating, Inc

25-95-25w Graham,KS

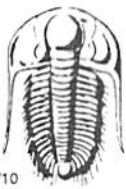
DST Test Number: 4



Triobite Testing, Inc

Ref. No: 54381

Printed: 2013.08.02 @ 10:15:02



TRILOBITE TESTING INC.

1515 Commerce Parkway • Hays, Kansas 67601

Test Ticket

NO. 54378

Well Name & No. North Fork Farms #25-2 Test No. 1 Date 7-29-88
 Company H+C Oil Operating, INC Elevation 2587 KB 2582 GL
 Address PO Box 86 Plainville
 Co. Rep / Geo. Marc Downing Rig American Eagle Rig #3
 Location: Sec. 25 Twp. 09S Rge. 25W Co. Graham State KS

Interval Tested 3938 3956 Zone Tested LHC "C"
 Anchor Length 18' Drill Pipe Run 3936 Mud Wt. 9.0
 Top Packer Depth 3934 Drill Collars Run 0 Vis 55
 Bottom Packer Depth 3938 Wt. Pipe Run 9 WL 6.8
 Total Depth 3956 Chlorides 1000 ppm System LCM 2*

Blow Description B.O.B. In 5 mins. Dead no blow back
B.O.B. In 6 mins. Dead no blow back

Rec	Feet of	%gas	%oil	%water	%mud
<u>160</u>	<u>MCW</u>		<u>60</u>	<u>40</u>	
<u>380</u>	<u>USMCW</u>		<u>98</u>	<u>2</u>	
Rec	Feet of	%gas	%oil	%water	%mud
Rec	Feet of	%gas	%oil	%water	%mud
Rec	Feet of	%gas	%oil	%water	%mud
Rec Total	<u>340</u>				

BHT 115 Gravity — API RW, 150 @ 68 °F Chlorides 2000 ppm
 (A) Initial Hydrostatic 2018 Test 1150 T-On Location 04:00
 (B) First Initial Flow 39 Jars T-Started 07:51
 (C) First Final Flow 176 Safety Joint T-Open 10:28
 (D) Initial Shut-In 381 Circ Sub T-Pulled 12:58
 (E) Second Initial Flow 227 Hourly Standby T-Out 15:10
 (F) Second Final Flow 325 Mileage 120 RT 186 Comments Wait on Cat From 4:00 to 6:45
 (G) Final Shut-In 378 Sampler Ruined Shale Packer
 (H) Final Hydrostatic 1874 Straddle Ruined Packer 320

Initial Open 30 Extra Packer Extra Copies
 Initial Shut-In 45 Extra Recorder Sub Total 0
 Final Flow 30 Day Standby Total 1656
 Final Shut-In 45 Accessibility MP/DST Disc't
 Sub Total 1336

Approved By _____ Our Representative [Signature]
 Trilobite Testing Inc. shall not be liable for damaged of any kind of the property or personnel of the one for whom a test is made, or for any loss suffered or sustained, directly or indirectly, through the use of its equipment, or its statements or opinion concerning the results of any test, tools lost or damaged in the hole shall be paid for at cost by the party for whom the test is made.



TRILOBITE TESTING INC.

1515 Commerce Parkway • Hays, Kansas 67601

Test Ticket

NO. 54379

Well Name & No. North Fork Farms #25-2 Test No. 2 Date 7/29/78
 Company A+C Oil Operating, INC Elevation 2587 KB 2582 GL
 Address _____
 Co. Rep / Geo. Marc Downing Rig American Eagle Rig #3
 Location: Sec. 25 Twp. 09S Rge. 25W Co. Graham State KS

Interval Tested 3956 3980 Zone Tested LKC "D"
 Anchor Length _____ Drill Pipe Run 3967 Mud Wt. 9.2
 Top Packer Depth 3952 Drill Collars Run 0 Vis 54
 Bottom Packer Depth 3956 Wt. Pipe Run 0 WL 7.2
 Total Depth 3980 Chlorides 1000 ppm System LCM 2#

Blow Description B.O.B. In 40 mins
Dead no blow back
Fair Surface slow built to 6 1/2 in
Dead no blow back

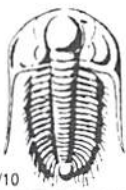
Rec	Feet of	%gas	%oil	%water	%mud
<u>210</u>	<u>SMCW Free Oil on top</u>			<u>95%</u>	<u>5%</u>
Rec	Feet of	%gas	%oil	%water	%mud
Rec	Feet of	%gas	%oil	%water	%mud
Rec	Feet of	%gas	%oil	%water	%mud

Rec Total 210 BHT 123 Gravity _____ API RW 214 @ 65 ° F Chlorides 45000 ppm
 (A) Initial Hydrostatic 1971 Test 1150 T-On Location 20:58
 (B) First Initial Flow 14 Jars _____ T-Started 21:38
 (C) First Final Flow 72 Safety Joint _____ T-Open 23:55
 (D) Initial Shut-In 381 Circ Sub _____ T-Pulled 02:55
 (E) Second Initial Flow 74 Hourly Standby _____ T-Out 05:00
 (F) Second Final Flow 120 Mileage 120 R/T 186 Comments _____
 (G) Final Shut-In 377 Sampler _____
 (H) Final Hydrostatic 1849 Straddle _____ Ruined Shale Packer _____

Initial Open 45 Shale Packer _____ Ruined Packer _____
 Initial Shut-In 45 Extra Packer _____ Extra Copies _____
 Final Flow 45 Extra Recorder _____ Sub Total 0
 Final Shut-In 45 Day Standby _____ Total 1336
 Sub Total 1336 Accessibility _____ MP/DST Disc't _____

Approved By _____ Our Representative [Signature]

Trilobite Testing Inc. shall not be liable for damaged or any kind of the property or personnel of the one for whom a test is made, or for any loss suffered or sustained, directly or indirectly, through the use of its equipment, or its statements or opinion concerning the results of any test, tools lost or damaged in the hole shall be paid for at cost by the party for whom the test is made.



TRILOBITE TESTING INC.

1515 Commerce Parkway • Hays, Kansas 67601

Test Ticket

NO. 54380

Well Name & No. North Fork Farms #25-2 Test No. 3 Date 7-30-13
 Company H+L Oil Operating, INC Elevation 28287 KB ~~2582~~
 Address _____
 Co. Rep / Geo. Marc Downing Rig American Eagle #3
 Location: Sec. 25 Twp. 09S Rge. 25W Co. Graham State KS

Interval Tested 4044 4078 Zone Tested LLK "H"
 Anchor Length _____ Drill Pipe Run 4030 Mud Wt. 9.1
 Top Packer Depth 4037 ~~4040~~ Drill Collars Run 0 Vis 57
 Bottom Packer Depth 4041 ~~4044~~ Wt. Pipe Run 0 WL 7.4
 Total Depth 4078 Chlorides 1,700 ppm System LCM 2#

Blow Description Weak surface blow
Dead no blow back
Tried flushing tool couldn't get to flush Dead no blow
Dead no blow (Flushed showed)
up on charts

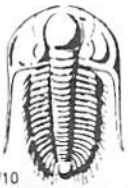
Rec	Feet of	%gas	%oil	%water	%mud
Rec	Feet of	%gas	%oil	%water	%mud
Rec <u>10</u>	Feet of <u>mud</u>	%gas	%oil	%water	<u>100</u> %mud
Rec	Feet of	%gas	%oil	%water	%mud
Rec	Feet of	%gas	%oil	%water	%mud

Rec Total 10 BHT _____ Gravity _____ API RW _____ @ _____ ° F Chlorides _____ ppm

(A) Initial Hydrostatic <u>2055</u>	<input checked="" type="checkbox"/> Test 1250	T-On Location <u>16:28</u>
(B) First Initial Flow <u>13</u>	<input type="checkbox"/> Jars _____	T-Started <u>17:40</u>
(C) First Final Flow <u>17</u>	<input type="checkbox"/> Safety Joint _____	T-Open <u>19:47</u>
(D) Initial Shut-In <u>600</u>	<input type="checkbox"/> Circ Sub _____	T-Pulled <u>21:47</u>
(E) Second Initial Flow <u>25</u>	<input type="checkbox"/> Hourly Standby _____	T-Out <u>25:59</u>
(F) Second Final Flow <u>19</u>	<input checked="" type="checkbox"/> Mileage <u>120 R/T</u> 186	Comments _____
(G) Final Shut-In <u>602</u>	<input type="checkbox"/> Sampler _____	<input type="checkbox"/> Ruined Shale Packer _____
(H) Final Hydrostatic <u>1848</u>	<input type="checkbox"/> Straddle _____	<input type="checkbox"/> Ruined Packer _____
Initial Open <u>30</u>	<input type="checkbox"/> Shale Packer _____	<input type="checkbox"/> Extra Copies _____
Initial Shut-In <u>30</u>	<input type="checkbox"/> Extra Packer _____	Sub Total <u>0</u>
Final Flow <u>30</u>	<input type="checkbox"/> Extra Recorder _____	Total <u>1436</u>
Final Shut-In <u>30</u>	<input type="checkbox"/> Day Standby _____	MP/DST Disc't _____
	<input type="checkbox"/> Accessibility _____	
	Sub Total <u>1436</u>	

Approved By _____ Our Representative [Signature]

Trilobite Testing Inc. shall not be liable for damaged of any kind of the property or personnel of the one for whom a test is made, or for any loss suffered or sustained, directly or indirectly, through the use of its equipment, or its statements or opinion concerning the results of any test, tools lost or damaged in the hole shall be paid for at cost by the party for whom the test is made.



TRILOBITE TESTING INC.

1515 Commerce Parkway • Hays, Kansas 67601

Test Ticket

NO. 54381

Well Name & No. North Fork Farms #25-2 Test No. 41 Date 7-31-13
 Company H&C Oil Operating, INC Elevation 2587 KB 2582 GL
 Address _____
 Co. Rep / Geo. Mark Downing Rig American Eagle Rig #3
 Location: Sec. 25 Twp. 09S Rge. 25W Co. Grattan State KS

Interval Tested 4072 4117 Zone Tested I+J
 Anchor Length _____ 45 Drill Pipe Run _____ Mud Wt. 9.2 p.l
 Top Packer Depth _____ 4068 Drill Collars Run 0 Vis 60
 Bottom Packer Depth _____ 4072 Wt. Pipe Run 0 WL 7.6
 Total Depth _____ 4117 Chlorides 1600 ppm System LCM 2#
 Blow Description Weak surface blow built to 1/2 in
Dead no blow back
Dead no blow
Dead no blow back

Rec	Feet of	%gas	%oil	%water	%mud
Rec	Feet of	%gas	%oil	%water	%mud
Rec <u>10</u>	Feet of <u>mud with oil spots</u>	%gas	%oil	%water <u>100</u>	%mud
Rec	Feet of	%gas	%oil	%water	%mud
Rec	Feet of	%gas	%oil	%water	%mud

Rec Total 10 BHT 115 Gravity _____ API RW _____ @ _____ °F Chlorides _____ ppm

(A) Initial Hydrostatic 2045 Test 1250 T-On Location 08:50
 (B) First Initial Flow 16 Jars _____ T-Started 09:58
 (C) First Final Flow 18 Safety Joint _____ T-Open 12:16
 (D) Initial Shut-In 42 Circ Sub _____ T-Pulled 14:16
 (E) Second Initial Flow 28 Hourly Standby _____ T-Out 16:09
 (F) Second Final Flow 60 Mileage 120 R/T 372 Comments _____
 (G) Final Shut-In 40 Sampler _____ loaded tools 8/1 15:00
 (H) Final Hydrostatic 1863 Straddle _____ Ruined Shale Packer _____
 Shale Packer _____ Ruined Packer _____
 Extra Packer _____ Extra Copies _____
 Initial Open 30 Extra Recorder _____ Sub Total 0
 Initial Shut-In 30 Day Standby _____ Total 1622
 Final Flow 30 Accessibility _____ MP/DST Disc't _____
 Final Shut-In 30 Sub Total 1622

Approved By _____ Our Representative Mark Downing
 Trilobite Testing Inc. shall not be liable for damaged of any kind of the property or personnel of the one for whom a test is made, or for any loss suffered or sustained, directly or indirectly, through the use of its equipment, or its statements or opinion concerning the results of any test, tools lost or damaged in the hole shall be paid for at cost by the party for whom the test is made.