



## DRILL STEM TEST REPORT

Prepared For: **Kinney Oil Company**

1401 17th st ste 870 Denver CO 80202 + 1246

ATTN: Saman Sharifaie

### **Plattner 1-10 #1**

### **10-1s- 14e Nemaha**

Start Date: 2013.05.25 @ 06:48:00

End Date: 2013.05.25 @ 17:05:30

Job Ticket #: 17461                      DST #: 1

Superior Testers Enterprises LLC  
PO Box 138 Great Bend KS 67530  
1-800-792-6902

Printed: 2013.05.25 @ 17:22:27



# DRILL STEM TEST REPORT

Kinney Oil Company

**10-1s- 14e Nemaha**

1401 17th st ste 870 Denver CO 80202 + 1246

**Plattner 1-10 #1**

Job Ticket: 17461

**DST#: 1**

ATTN: Saman Sharifaie

Test Start: 2013.05.25 @ 06:48:00

## GENERAL INFORMATION:

Formation: **Viola**

Deviated: No Whipstock: ft (KB)

Time Tool Opened: 10:01:30

Time Test Ended: 17:05:30

Test Type: Conventional Bottom Hole (Initial)

Tester: Jared Scheck

Unit No: 3320- Great Bend -54

**Interval: 3442.00 ft (KB) To 3500.00 ft (KB) (TVD)**

Reference Elevations: 1211.00 ft (KB)

Total Depth: 3500.00 ft (KB) (TVD)

1201.00 ft (CF)

Hole Diameter: 7.88 inches Hole Condition: Poor

KB to GR/CF: 10.00 ft

## Serial #: 6731

Press@RunDepth: 889.41 psia @ ft (KB)

Capacity: 5000.00 psia

Start Date: 2013.05.25

End Date: 2013.05.25

Last Calib.: 2013.05.25

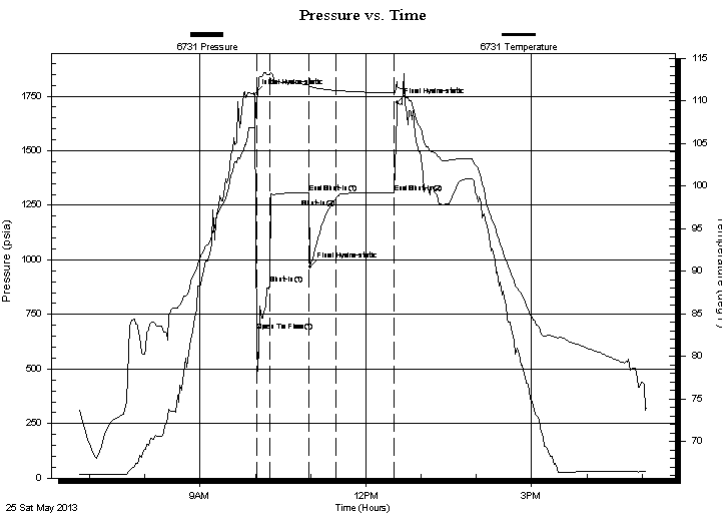
Start Time: 06:48:00

End Time: 17:05:30

Time On Btm: 2013.05.25 @ 09:59:00

Time Off Btm: 2013.05.25 @ 10:59:30

**TEST COMMENT:** 1st Opening 15 Minutes-Strong blow built bottom of bucket in 1 minute  
 1st Shut-in 45 Minutes-No blow back  
 2nd Opening 30 Minutes-Strong blow built bottom of bucket in 1 minute  
 2nd Shut-in 60 Minutes-No blow back



## PRESSURE SUMMARY

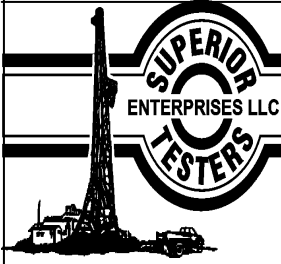
Time (Min.)	Pressure (psia)	Temp (deg F)	Annotation
0	1759.86	106.87	Initial Hydro-static
3	675.62	110.47	Open To Flow (1)
17	889.41	113.16	Shut-In(1)
59	1304.98	111.85	End Shut-In(1)
61	967.49	111.71	Final Hydro-static
88	1278.89	111.25	Shut-In(2)
152	1306.90	110.96	End Shut-In(2)
155	1720.42	111.83	Final Hydro-static

## Recovery

Length (ft)	Description	Volume (bbl)
300.00	w ater cut mud 40%w ater 60%mud	1.48
2500.00	w ater	34.61
0.00	chlorieds 10,000 resistivity .3@75 degre	0.00
0.00	used circulating sub	0.00

## Gas Rates

Choke (inches)	Pressure (psia)	Gas Rate (Mcf/d)



# DRILL STEM TEST REPORT

Kinney Oil Company

**10-1s- 14e Nemaha**

1401 17th st ste 870 Denver CO 80202 + 1246

**Plattner 1-10 #1**

Job Ticket: 17461

**DST#: 1**

ATTN: Saman Sharifaie

Test Start: 2013.05.25 @ 06:48:00

## GENERAL INFORMATION:

Formation: **Viola**

Deviated: No Whipstock: ft (KB)

Time Tool Opened: 10:01:30

Time Test Ended: 17:05:30

Test Type: Conventional Bottom Hole (Initial)

Tester: Jared Scheck

Unit No: 3320- Great Bend -54

**Interval: 3442.00 ft (KB) To 3500.00 ft (KB) (TVD)**

Reference Elevations: 1211.00 ft (KB)

Total Depth: 3500.00 ft (KB) (TVD)

1201.00 ft (CF)

Hole Diameter: 7.88 inches Hole Condition: Poor

KB to GR/CF: 10.00 ft

## Serial #: 8156

Press@RunDepth: 1309.78 psia @ ft (KB)

Capacity: 5000.00 psia

Start Date: 2013.05.25

End Date:

2013.05.25

Last Calib.:

2013.05.25

Start Time: 06:48:00

End Time:

17:06:30

Time On Btm:

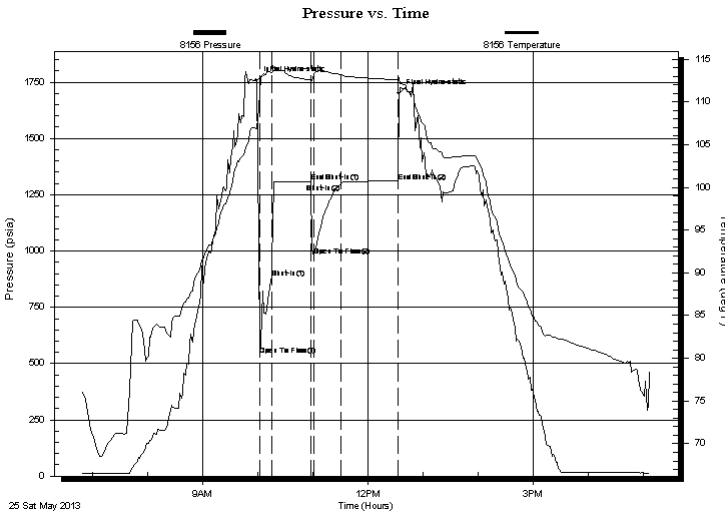
2013.05.25 @ 09:58:30

Time Off Btm:

2013.05.25 @ 12:33:00

**TEST COMMENT:** 1st Opening 15 Minutes-Strong blow built bottom of bucket in 1 minute  
 1st Shut-in 45 Minutes-No blow back  
 2nd Opening 30 Minutes-Strong blow built bottom of bucket in 1 minute  
 2nd Shut-in 60 Minutes-No blow back

## PRESSURE SUMMARY



Time (Min.)	Pressure (psia)	Temp (deg F)	Annotation
0	1757.76	106.91	Initial Hydro-static
4	537.46	110.95	Open To Flow (1)
17	879.12	113.45	Shut-In(1)
60	1309.72	112.54	End Shut-In(1)
62	977.05	113.15	Open To Flow (2)
92	1299.13	113.15	Shut-In(2)
154	1309.78	112.60	End Shut-In(2)
155	1701.01	112.65	Final Hydro-static

## Recovery

Length (ft)	Description	Volume (bbl)
300.00	w ater cut mud 40%w ater 60%mud	1.48
2500.00	w ater	34.61
0.00	chlorieds 10,000 resistivity .3@75 degre	0.00
0.00	used circulating sub	0.00

## Gas Rates

Choke (inches)	Pressure (psia)	Gas Rate (Mcf/d)



# DRILL STEM TEST REPORT

**TOOL DIAGRAM**

Kinney Oil Company

**10-1s- 14e Nemaha**

1401 17th st ste 870 Denver CO 80202 + 1246

**Plattner 1-10 #1**

Job Ticket: 17461

**DST#: 1**

ATTN: Saman Sharifaie

Test Start: 2013.05.25 @ 06:48:00

## Tool Information

Drill Pipe:	Length: 3074.00 ft	Diameter: 3.80 inches	Volume: 43.12 bbl	Tool Weight: 1000.00 lb
Heavy Wt. Pipe:	Length: 0.00 ft	Diameter: 0.00 inches	Volume: 0.00 bbl	Weight set on Packer: 20000.00 lb
Drill Collar:	Length: 350.00 ft	Diameter: 2.25 inches	Volume: 1.72 bbl	Weight to Pull Loose: 65000.00 lb
			<u>Total Volume: 44.84 bbl</u>	Tool Chased 4.00 ft
Drill Pipe Above KB:	10.00 ft			String Weight: Initial 35000.00 lb
Depth to Top Packer:	3442.00 ft			Final 41000.00 lb
Depth to Bottom Packer:	ft			
Interval between Packers:	58.00 ft			
Tool Length:	86.00 ft			
Number of Packers:	2	Diameter: 6.75 inches		

Tool Comments: ran shale packer/ circulating sub used

Tool Description	Length (ft)	Serial No.	Position	Depth (ft)	Accum. Lengths
Shut-In Tool	5.00			3419.00	
Hydraulic Tool	5.00			3424.00	
Jars	6.00			3430.00	
Safety Joint	2.00			3432.00	
Packer	5.00			3437.00	28.00 Bottom Of Top Packer
Packer	5.00			3442.00	
Anchor	3.00			3445.00	
Change Over Sub	0.75			3445.75	
Drill Pipe	31.50			3477.25	
Change Over Sub	0.75			3478.00	
Anchor	17.00			3495.00	
Recorder	1.00	6731	Inside	3496.00	
Recorder	1.00		Outside	3497.00	
Bullnose	3.00			3500.00	58.00 Bottom Packers & Anchor

**Total Tool Length: 86.00**



# DRILL STEM TEST REPORT

## FLUID SUMMARY

Kinney Oil Company

**10-1s- 14e Nemaha**

1401 17th st ste 870 Denver CO 80202 + 1246

**Plattner 1-10 #1**

Job Ticket: 17461

**DST#: 1**

ATTN: Saman Sharifaie

Test Start: 2013.05.25 @ 06:48:00

### Mud and Cushion Information

Mud Type: Gel Chem

Cushion Type:

Oil API:

deg API

Mud Weight: 9.00 lb/gal

Cushion Length:

ft

Water Salinity:

ppm

Viscosity: 40.00 sec/qt

Cushion Volume:

bbbl

Water Loss: 8.19 in<sup>3</sup>

Gas Cushion Type:

Resistivity: ohm.m

Gas Cushion Pressure:

psia

Salinity: 550.00 ppm

Filter Cake: 1.00 inches

### Recovery Information

Recovery Table

Length ft	Description	Volume bbl
300.00	w ater cut mud 40%w ater 60%mud	1.475
2500.00	w ater	34.613
0.00	chlorieds 10,000 resistivity .3@75 degre	0.000
0.00	used circulating sub	0.000

Total Length: 2800.00 ft      Total Volume: 36.088 bbl

Num Fluid Samples: 0

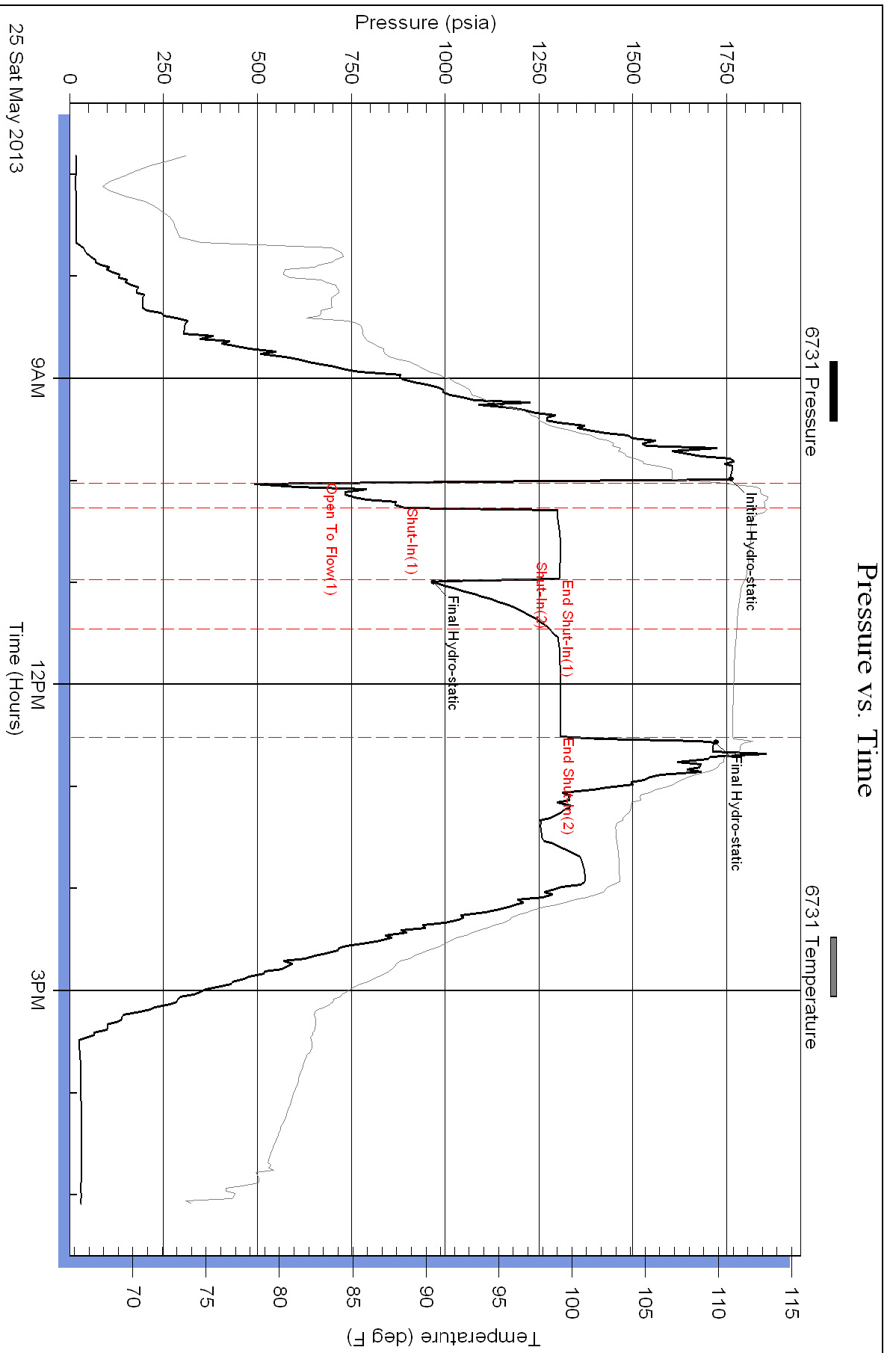
Num Gas Bombs: 0

Serial #:

Laboratory Name:

Laboratory Location:

Recovery Comments: ran shale packer/chlorides 10,000 resistivity .3 @ 75 degrees/dropped bar broke pin



### Pressure vs. Time

