



DRILL STEM TEST REPORT

Prepared For: **L B Exloration Inc.**

2135 2nd Road Holyrood
Kansas 67450

ATTN: Steven Peterman

Jezek #2

21-16s-10w-Ellsworth

Start Date: 2013.02.18 @ 01:00:00

End Date: 2013.02.18 @ 06:44:30

Job Ticket #: 17422 DST #: 1

Superior Testers Enterprises LLC
PO Box 138 Great Bend KS 67530
1-800-792-6902

Printed: 2013.02.18 @ 06:56:08



DRILL STEM TEST REPORT

L B Exloration Inc.

21-16s-10w-Ellsworth

2135 2nd Road Holyrood
Kansas 67450

Jezeq #2

Job Ticket: 17422

DST#: 1

ATTN: Steven Peterman

Test Start: 2013.02.18 @ 01:00:00

GENERAL INFORMATION:

Formation: **Lansing J-K**

Deviated: No Whipstock: ft (KB)

Time Tool Opened: 02:50:30

Time Test Ended: 06:44:30

Test Type: Conventional Bottom Hole (Initial)

Tester: Dustin Ellis

Unit No: 3315-Great Bend-80

Interval: 3195.00 ft (KB) To 3245.00 ft (KB) (TVD)

Reference Elevations: 1882.00 ft (KB)

Total Depth: 3245.00 ft (KB) (TVD)

1871.00 ft (CF)

Hole Diameter: 7.88 inches Hole Condition: Fair

KB to GR/CF: 11.00 ft

Serial #: 6839 Outside

Press@RunDepth: 71.66 psia @ 3242.00 ft (KB)

Capacity: 5000.00 psia

Start Date: 2013.02.18 End Date: 2013.02.18

Last Calib.: 2013.02.18

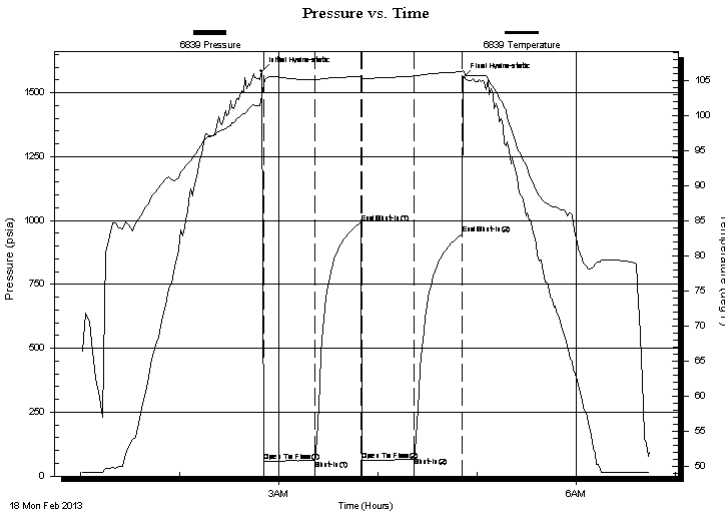
Start Time: 01:00:00 End Time: 06:44:30

Time On Btm: 2013.02.18 @ 02:49:30

Time Off Btm: 2013.02.18 @ 04:51:30

TEST COMMENT: 1st Open 30 minutes Weak surface blow 1 inch. through out.
1st Shut in 30 minutes No blow back
2nd Open 30 minutes Blow dead.
2nd Shut in 30 minutes No blow back.

PRESSURE SUMMARY



Time (Min.)	Pressure (psia)	Temp (deg F)	Annotation
0	1584.01	102.86	Initial Hydro-static
1	58.06	104.48	Open To Flow (1)
32	63.31	105.18	Shut-In(1)
60	990.97	105.65	End Shut-In(1)
61	62.22	105.42	Open To Flow (2)
93	71.66	105.72	Shut-In(2)
122	946.38	106.34	End Shut-In(2)
122	1558.44	106.52	Final Hydro-static

Recovery

Length (ft)	Description	Volume (bbl)
30.00	Mud 100%	0.42

Gas Rates

Choke (inches)	Pressure (psia)	Gas Rate (Mcf/d)



DRILL STEM TEST REPORT

L B Exloration Inc.

21-16s-10w-Ellsworth

2135 2nd Road Holyrood
Kansas 67450

Jezeq #2

Job Ticket: 17422

DST#: 1

ATTN: Steven Peterman

Test Start: 2013.02.18 @ 01:00:00

GENERAL INFORMATION:

Formation: **Lansing J-K**

Deviated: No Whipstock: ft (KB)

Time Tool Opened: 02:50:30

Time Test Ended: 06:44:30

Test Type: Conventional Bottom Hole (Initial)

Tester: Dustin Ellis

Unit No: 3315-Great Bend-80

Interval: 3195.00 ft (KB) To 3245.00 ft (KB) (TVD)

Reference Elevations: 1882.00 ft (KB)

Total Depth: 3245.00 ft (KB) (TVD)

1871.00 ft (CF)

Hole Diameter: 7.88 inches Hole Condition: Fair

KB to GR/CF: 11.00 ft

Serial #: 8524 Inside

Press@RunDepth: 948.42 psia @ 3241.00 ft (KB)

Capacity: 5000.00 psia

Start Date: 2013.02.18 End Date: 2013.02.18

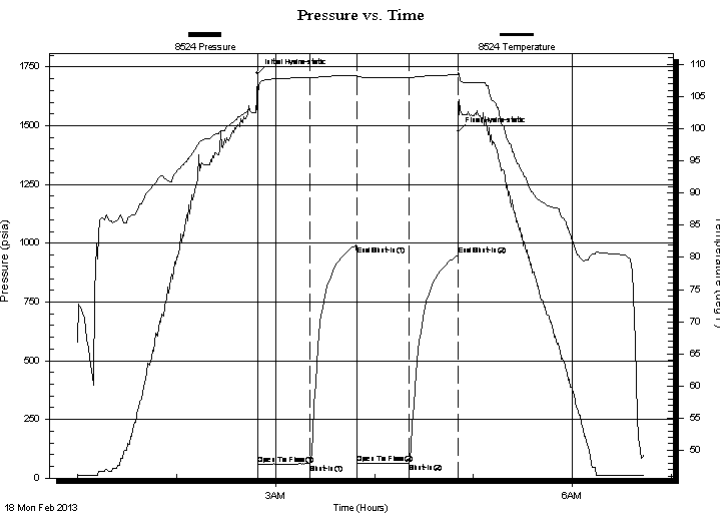
Last Calib.: 2013.02.18

Start Time: 01:00:00 End Time: 06:43:52

Time On Btm: 2013.02.18 @ 02:49:01

Time Off Btm: 2013.02.18 @ 04:50:44

TEST COMMENT: 1st Open 30 minutes Weak surface blow 1 inch. through out.
1st Shut in 30 minutes No blow back
2nd Open 30 minutes Blow dead.
2nd Shut in 30 minutes No blow back.



PRESSURE SUMMARY

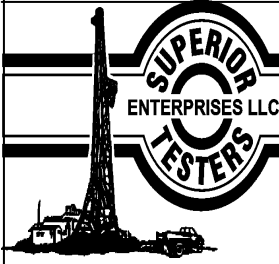
Time (Min.)	Pressure (psia)	Temp (deg F)	Annotation
0	1723.71	104.89	Initial Hydro-static
1	58.38	104.92	Open To Flow (1)
32	59.73	107.95	Shut-In(1)
61	952.01	108.26	End Shut-In(1)
61	61.30	107.85	Open To Flow (2)
92	62.80	108.02	Shut-In(2)
122	948.42	108.41	End Shut-In(2)
122	1475.06	108.77	Final Hydro-static

Recovery

Length (ft)	Description	Volume (bbl)
30.00	Mud 100%	0.42

Gas Rates

Choke (inches)	Pressure (psia)	Gas Rate (Mcf/d)



DRILL STEM TEST REPORT

TOOL DIAGRAM

L B Exloration Inc.

21-16s-10w-Ellsworth

2135 2nd Road Holyrood
Kansas 67450

Jezek #2

Job Ticket: 17422

DST#: 1

ATTN: Steven Peterman

Test Start: 2013.02.18 @ 01:00:00

Tool Information

Drill Pipe:	Length: 3194.00 ft	Diameter: 3.80 inches	Volume: 44.80 bbl	Tool Weight: 2000.00 lb
Heavy Wt. Pipe:	Length: 0.00 ft	Diameter: 0.00 inches	Volume: 0.00 bbl	Weight set on Packer: 20000.00 lb
Drill Collar:	Length: 0.00 ft	Diameter: 0.00 inches	Volume: 0.00 bbl	Weight to Pull Loose: 52000.00 lb
			<u>Total Volume: 44.80 bbl</u>	Tool Chased 0.00 ft
Drill Pipe Above KB:	19.00 ft			String Weight: Initial 49000.00 lb
Depth to Top Packer:	3195.00 ft			Final 49000.00 lb
Depth to Bottom Packer:	ft			
Interval between Packers:	50.00 ft			
Tool Length:	70.00 ft			
Number of Packers:	2	Diameter: 6.75 inches		

Tool Comments:

Tool Description	Length (ft)	Serial No.	Position	Depth (ft)	Accum. Lengths
------------------	-------------	------------	----------	------------	----------------

Shut-In Tool	5.00			3180.00	
Hydraulic Tool	5.00			3185.00	
Packer	5.00			3190.00	20.00 Bottom Of Top Packer
Packer	5.00			3195.00	
Anchor	45.00			3240.00	
Recorder	1.00	8524	Inside	3241.00	
Recorder	1.00	6839	Outside	3242.00	
Bullnose	3.00			3245.00	50.00 Bottom Packers & Anchor

Total Tool Length: 70.00



DRILL STEM TEST REPORT

FLUID SUMMARY

L B Exloration Inc.

21-16s-10w-Ellsworth

2135 2nd Road Holyrood
Kansas 67450

Jezeq #2

Job Ticket: 17422

DST#: 1

ATTN: Steven Peterman

Test Start: 2013.02.18 @ 01:00:00

Mud and Cushion Information

Mud Type: Gel Chem

Cushion Type:

Oil API:

deg API

Mud Weight: 9.00 lb/gal

Cushion Length:

ft

Water Salinity:

ppm

Viscosity: 48.00 sec/qt

Cushion Volume:

bbl

Water Loss: 7.20 in³

Gas Cushion Type:

Resistivity: ohm.m

Gas Cushion Pressure:

psia

Salinity: 2600.00 ppm

Filter Cake: 1.00 inches

Recovery Information

Recovery Table

Length ft	Description	Volume bbl
30.00	Mud 100%	0.421

Total Length: 30.00 ft Total Volume: 0.421 bbl

Num Fluid Samples: 0

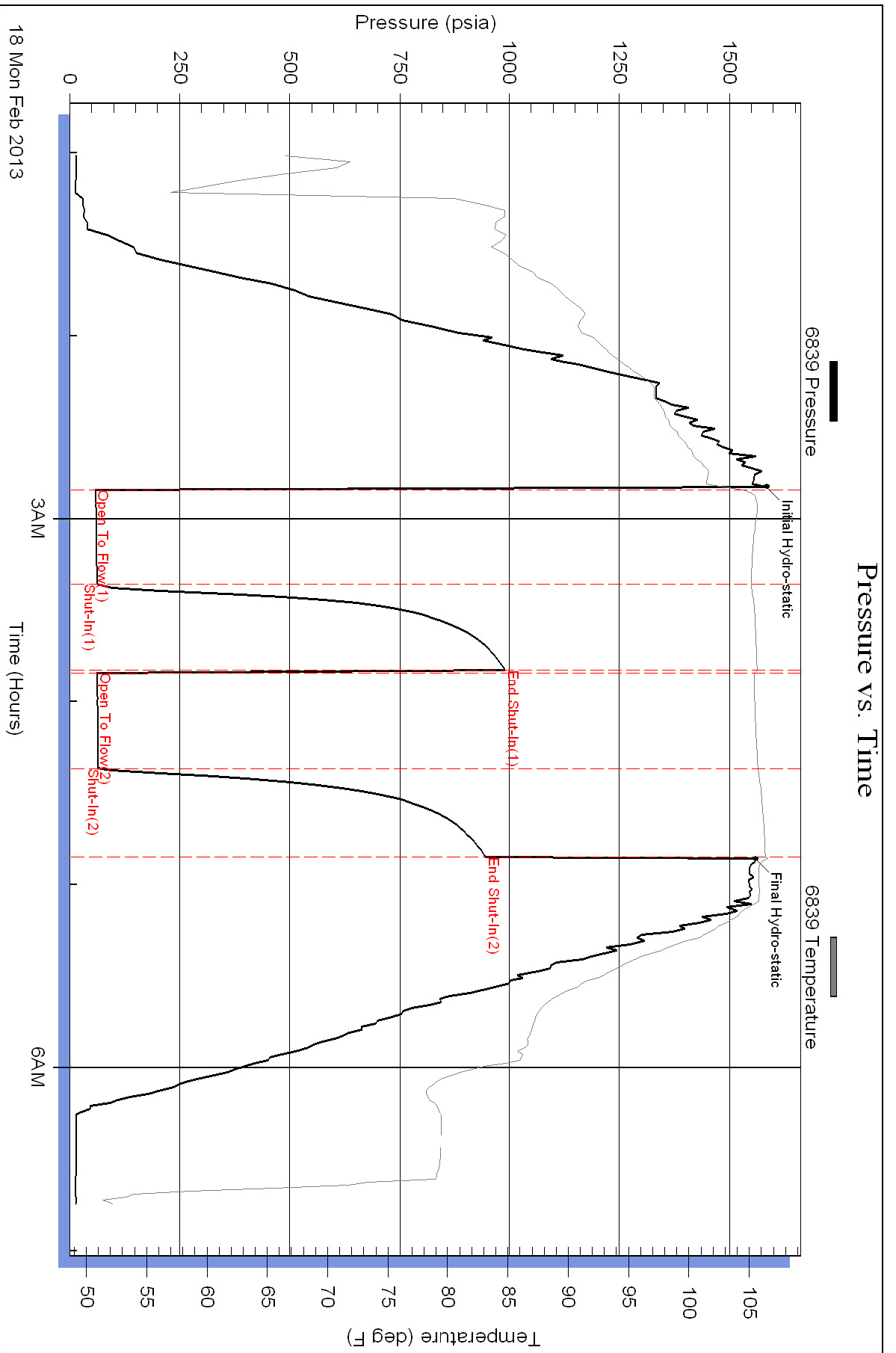
Num Gas Bombs: 0

Serial #:

Laboratory Name:

Laboratory Location:

Recovery Comments:



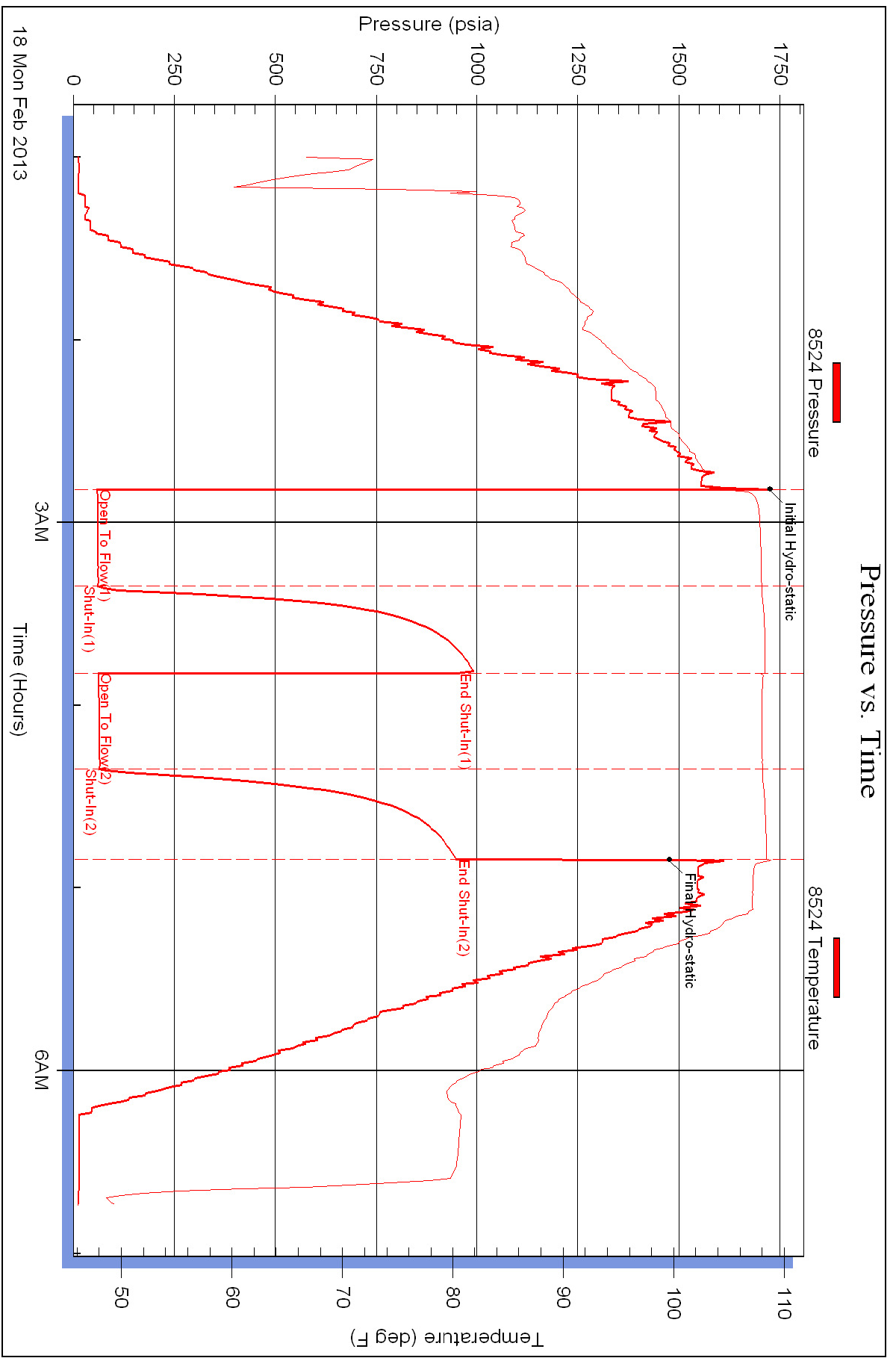
Serial #: 8524

Inside

L B Exploration Inc.

Jezeq #2

DST Test Number: 1



Superior Testers Enterprises LLC

Ref. No: 17422

Printed: 2013.02.18 @ 06:56:09