



DRILL STEM TEST REPORT

Prepared For: **L B Exloration Inc.**

2135 2nd Road Holyrood
Kansas 67450

ATTN: Steven Peterman

Jezek #2

21-16s-10w-Ellsworth

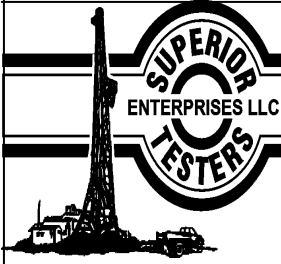
Start Date: 2013.02.19 @ 06:55:00

End Date: 2013.02.19 @ 12:21:30

Job Ticket #: 17424 DST #: 3

Superior Testers Enterprises LLC
PO Box 138 Great Bend KS 67530
1-800-792-6902

Printed: 2013.02.19 @ 12:41:13



DRILL STEM TEST REPORT

L B Exloration Inc.

21-16s-10w-Ellsworth

2135 2nd Road Holyrood
Kansas 67450

Jezeq #2

Job Ticket: 17424

DST#: 3

ATTN: Steven Peterman

Test Start: 2013.02.19 @ 06:55:00

GENERAL INFORMATION:

Formation: **Arbuckle**

Deviated: No Whipstock: ft (KB)

Time Tool Opened: 08:48:30

Time Test Ended: 12:21:30

Test Type: Conventional Bottom Hole (Initial)

Tester: Dustin Ellis

Unit No: 3315-Great Bend-80

Interval: 3350.00 ft (KB) To 3363.00 ft (KB) (TVD)

Reference Elevations: 1882.00 ft (KB)

Total Depth: 3363.00 ft (KB) (TVD)

1871.00 ft (CF)

Hole Diameter: 7.88 inches Hole Condition: Fair

KB to GR/CF: 11.00 ft

Serial #: 6839 Outside

Press@RunDepth: 1130.01 psia @ 3360.00 ft (KB)

Capacity: 5000.00 psia

Start Date: 2013.02.19

End Date: 2013.02.19

Last Calib.: 2013.02.19

Start Time: 06:55:00

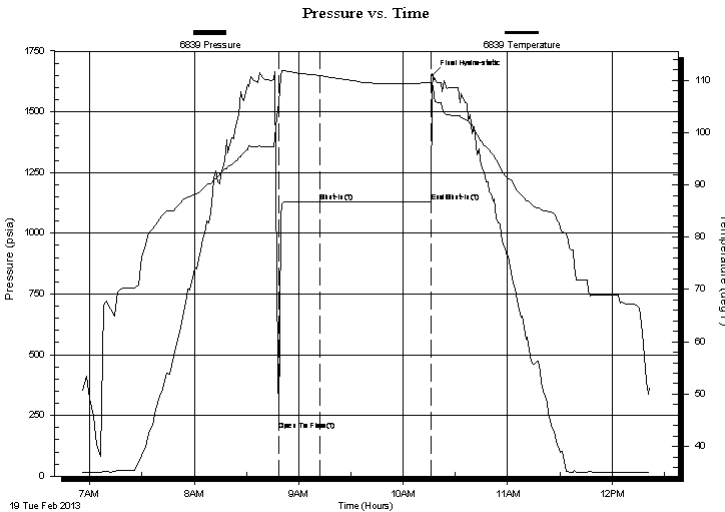
End Time: 12:21:30

Time On Btm:

Time Off Btm: 2013.02.19 @ 10:17:00

TEST COMMENT: 1st Open 20 minutes Strong blow blew bottom bucket in 1 minute.
1st Shut in 30 minutes No blow back.
2nd Open 20 minutes No blow dead
2nd Shut in 20 minutes No blow back.

PRESSURE SUMMARY



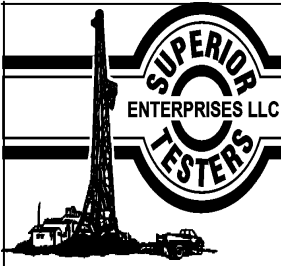
Time (Min.)	Pressure (psia)	Temp (deg F)	Annotation
0	189.23	105.78	Open To Flow (1)
24	1130.01	110.89	Shut-In(1)
88	1130.55	109.50	End Shut-In(1)
89	1651.69	108.84	Final Hydro-static

Recovery

Length (ft)	Description	Volume (bbl)
127.00	Mud 100%	1.78

Gas Rates

Choke (inches)	Pressure (psia)	Gas Rate (Mcf/d)



DRILL STEM TEST REPORT

L B Exloration Inc.

21-16s-10w-Ellsworth

2135 2nd Road Holyrood
Kansas 67450

Jezeq #2

Job Ticket: 17424

DST#: 3

ATTN: Steven Peterman

Test Start: 2013.02.19 @ 06:55:00

GENERAL INFORMATION:

Formation: **Arbuckle**

Deviated: No Whipstock: ft (KB)

Time Tool Opened: 08:48:30

Time Test Ended: 12:21:30

Test Type: Conventional Bottom Hole (Initial)

Tester: Dustin Ellis

Unit No: 3315-Great Bend-80

Interval: 3350.00 ft (KB) To 3363.00 ft (KB) (TVD)

Reference Elevations: 1882.00 ft (KB)

Total Depth: 3363.00 ft (KB) (TVD)

1871.00 ft (CF)

Hole Diameter: 7.88 inches Hole Condition: Fair

KB to GR/CF: 11.00 ft

Serial #: 8524 Inside

Press@RunDepth: 1129.63 psia @ 3359.00 ft (KB)

Capacity: 5000.00 psia

Start Date: 2013.02.19

End Date:

2013.02.19

Last Calib.:

2013.02.19

Start Time: 06:55:00

End Time:

12:21:04

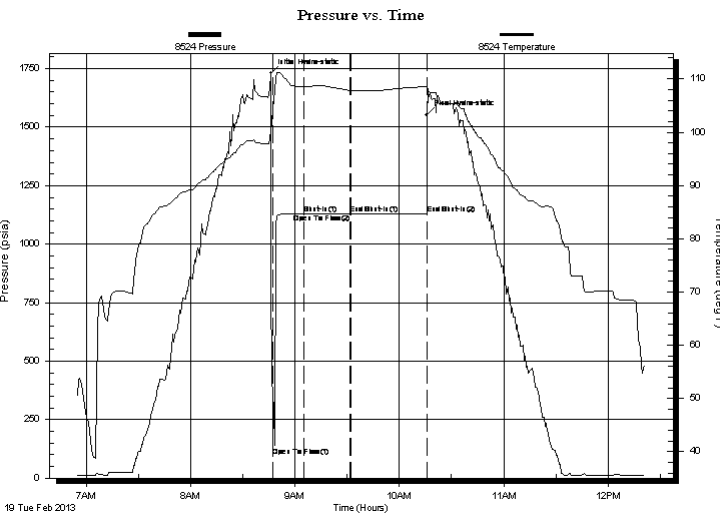
Time On Btm:

2013.02.19 @ 08:46:16

Time Off Btm:

2013.02.19 @ 10:15:44

TEST COMMENT: 1st Open 20 minutes Strong blow blew bottom bucket in 1 minute.
1st Shut in 30 minutes No blow back.
2nd Open 20 minutes No blow dead
2nd Shut in 20 minutes No blow back.



PRESSURE SUMMARY

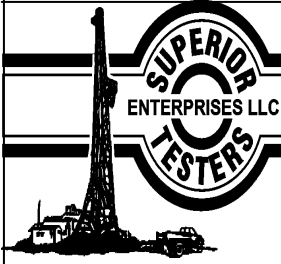
Time (Min.)	Pressure (psia)	Temp (deg F)	Annotation
0	1730.68	100.27	Initial Hydro-static
1	92.17	104.36	Open To Flow (1)
19	1129.32	108.61	Shut-In(1)
46	1129.48	107.85	End Shut-In(1)
46	1129.48	107.85	Open To Flow (2)
90	1129.63	108.53	End Shut-In(2)
90	1552.98	108.77	Final Hydro-static

Recovery

Length (ft)	Description	Volume (bbl)
127.00	Mud 100%	1.78

Gas Rates

Choke (inches)	Pressure (psia)	Gas Rate (Mcf/d)



DRILL STEM TEST REPORT

TOOL DIAGRAM

L B Exloration Inc.

21-16s-10w-Ellsworth

2135 2nd Road Holyrood
Kansas 67450

Jezek #2

Job Ticket: 17424

DST#: 3

ATTN: Steven Peterman

Test Start: 2013.02.19 @ 06:55:00

Tool Information

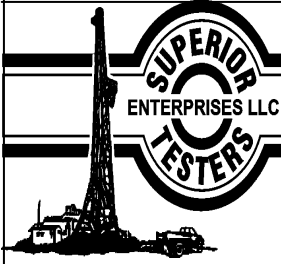
Drill Pipe:	Length: 3352.00 ft	Diameter: 3.80 inches	Volume: 47.02 bbl	Tool Weight: 2000.00 lb
Heavy Wt. Pipe:	Length: 0.00 ft	Diameter: 0.00 inches	Volume: 0.00 bbl	Weight set on Packer: 20000.00 lb
Drill Collar:	Length: 0.00 ft	Diameter: 0.00 inches	Volume: 0.00 bbl	Weight to Pull Loose: 50000.00 lb
			<u>Total Volume: 47.02 bbl</u>	Tool Chased 5.00 ft
Drill Pipe Above KB:	22.00 ft			String Weight: Initial 49000.00 lb
Depth to Top Packer:	3350.00 ft			Final 49000.00 lb
Depth to Bottom Packer:	ft			
Interval between Packers:	13.00 ft			
Tool Length:	33.00 ft			
Number of Packers:	2	Diameter: 6.75 inches		

Tool Comments:

Tool Description

Tool Description	Length (ft)	Serial No.	Position	Depth (ft)	Accum. Lengths
Shut-In Tool	5.00			3335.00	
Hydraulic Tool	5.00			3340.00	
Packer	5.00			3345.00	20.00 Bottom Of Top Packer
Packer	5.00			3350.00	
Anchor	8.00			3358.00	
Recorder	1.00	8524	Inside	3359.00	
Recorder	1.00	6839	Outside	3360.00	
Bullnose	3.00			3363.00	13.00 Bottom Packers & Anchor

Total Tool Length: 33.00



DRILL STEM TEST REPORT

FLUID SUMMARY

L B Exloration Inc.

21-16s-10w-Ellsworth

2135 2nd Road Holyrood
Kansas 67450

Jezeq #2

Job Ticket: 17424

DST#: 3

ATTN: Steven Peterman

Test Start: 2013.02.19 @ 06:55:00

Mud and Cushion Information

Mud Type: Gel Chem

Mud Weight: 9.00 lb/gal

Viscosity: 44.00 sec/qt

Water Loss: 8.80 in³

Resistivity: ohm.m

Salinity: 4000.00 ppm

Filter Cake: 1.00 inches

Cushion Type:

Cushion Length: ft

Cushion Volume: bbl

Gas Cushion Type:

Gas Cushion Pressure: psia

Oil API:

Water Salinity: ppm

deg API

Recovery Information

Recovery Table

Length ft	Description	Volume bbl
127.00	Mud 100%	1.781

Total Length: 127.00 ft Total Volume: 1.781 bbl

Num Fluid Samples: 0

Num Gas Bombs: 0

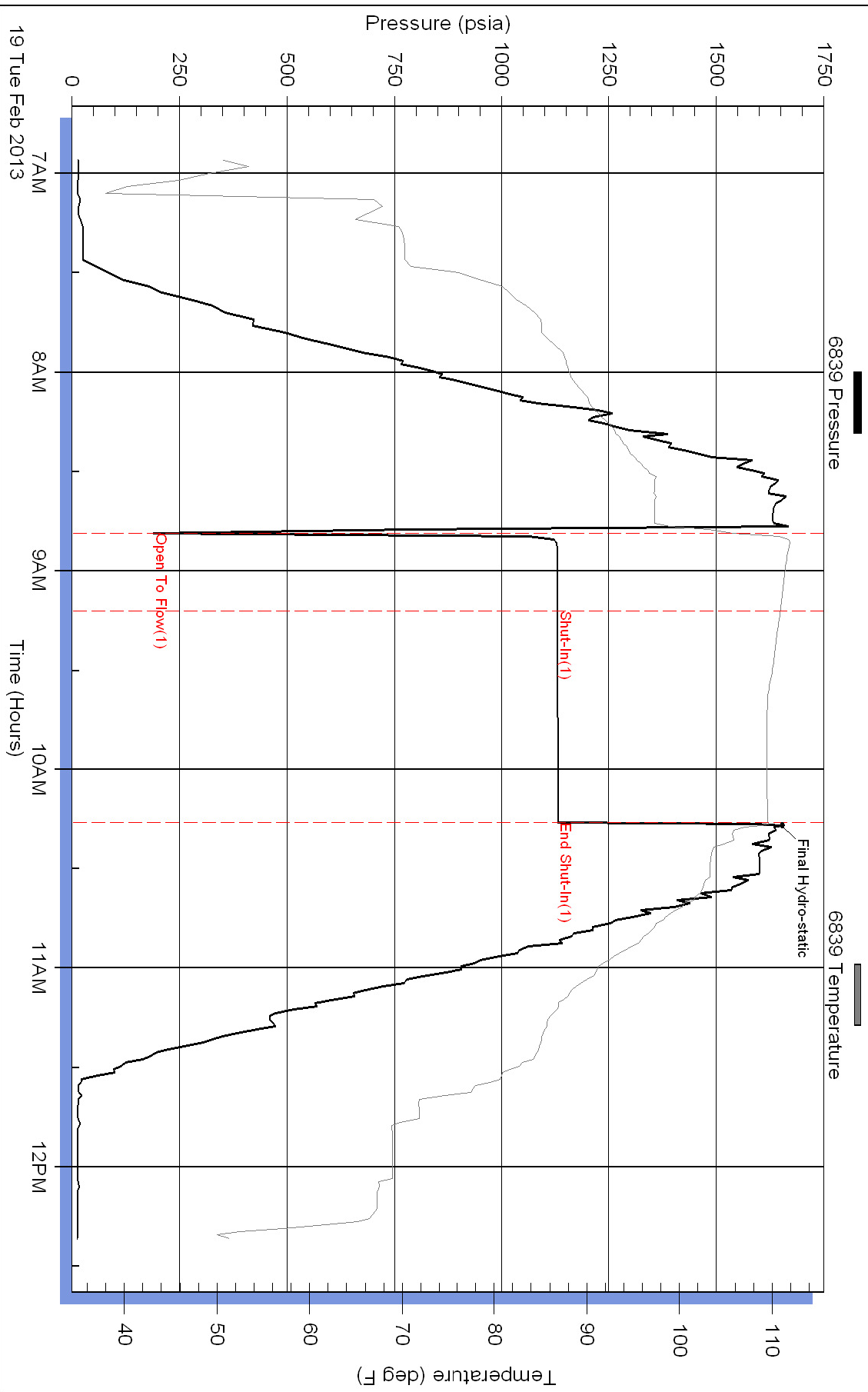
Serial #:

Laboratory Name:

Laboratory Location:

Recovery Comments:

Pressure vs. Time



Pressure vs. Time

