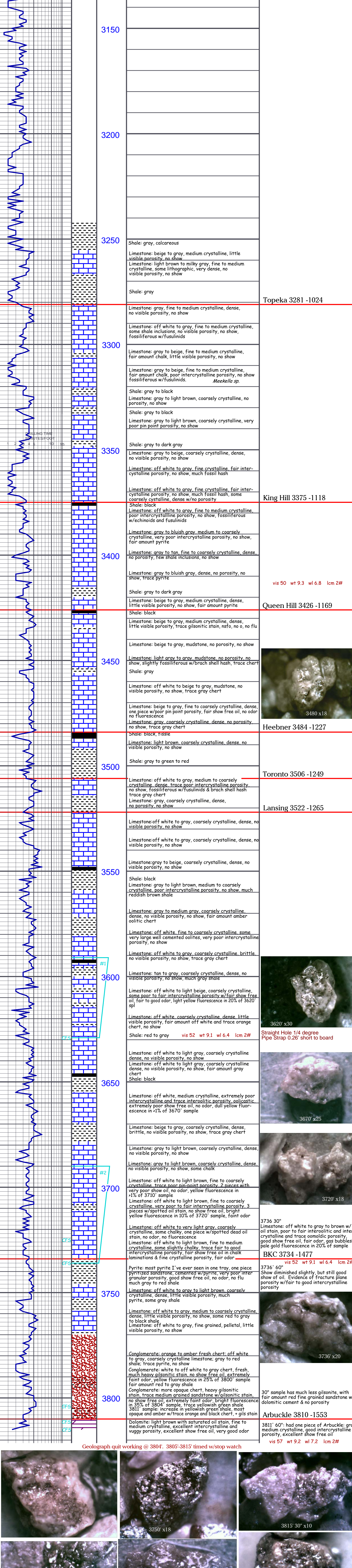


API #: 15-163-24116
 ELEVATION: **2257'**
 D.F.: **2250**
 G.L.: **2250**
 DEPT: MEASURED FROM KB
 Log: **Checked**
 Station: **5.127' 144' @ 3813' w/145' xsg**
 Production: **5.127' 144' @ 3813' w/145' xsg**
 Core: **None**
 Incls: **None**
 Encs: **None**

FORMATION	DEPTH	ELOG	DATUM	A. -489'	B. -1028'	C. -1533'
Arbuckle	1725	1724	+489			
B.M.H.	1770	1769	+489			
Yorkville	3281	3278	-1028			
King Hill	3325	3322	-1113			
Queen Hill	3384	3382	-1173			
Heebner	3484	3482	-1225			
Toronto	3506	3504	-1247			
Lansing	3522	3522	-1262			
Arbuckle	3810	3810	-1533			
RTD	3815	3816	-1540			



Geograph quit working @ 3804'. 3805-3815 timed w/stop watch

3815 30' x 22
3815 30' x 25
3815 30' x 25
3815 60' x 15

3736 30' Limestone: off white to gray to brown w/ pink to brown and inter-crystalline and trace inter-crystalline porosity. good show of oil. Evidence of fracture plane porosity w/ fair to good inter-crystalline porosity.

3736 60' Show diminished slightly, but still good show of oil. Evidence of fracture plane porosity w/ fair to good inter-crystalline porosity.

3810 - 1553 Dolomite: light brown with saturated oil stain, fine to medium crystalline, excellent inter-crystalline and vuggy porosity, excellent show free oil, very good odor

Trans Pacific Oil Corp. 2257 K.B.
 Nutsch-Buss 'A' Unit #1-2
 1980' FSL & 100' FWL 2-10S-20W

DST Information provided by: **SEARBY ENTERPRISES LLC**

Daily Progress Report
 Nutsch-Buss 'A' Unit 1-2 API # 15-163-24116
 Well: **Nutsch-Buss 'A' Unit 1-2** STR **2-10S-20W** Co: **Rooks** State: **Kansas**
 PBTD: **KB: 2257** Location: **1980' FSL, 100' FWL**

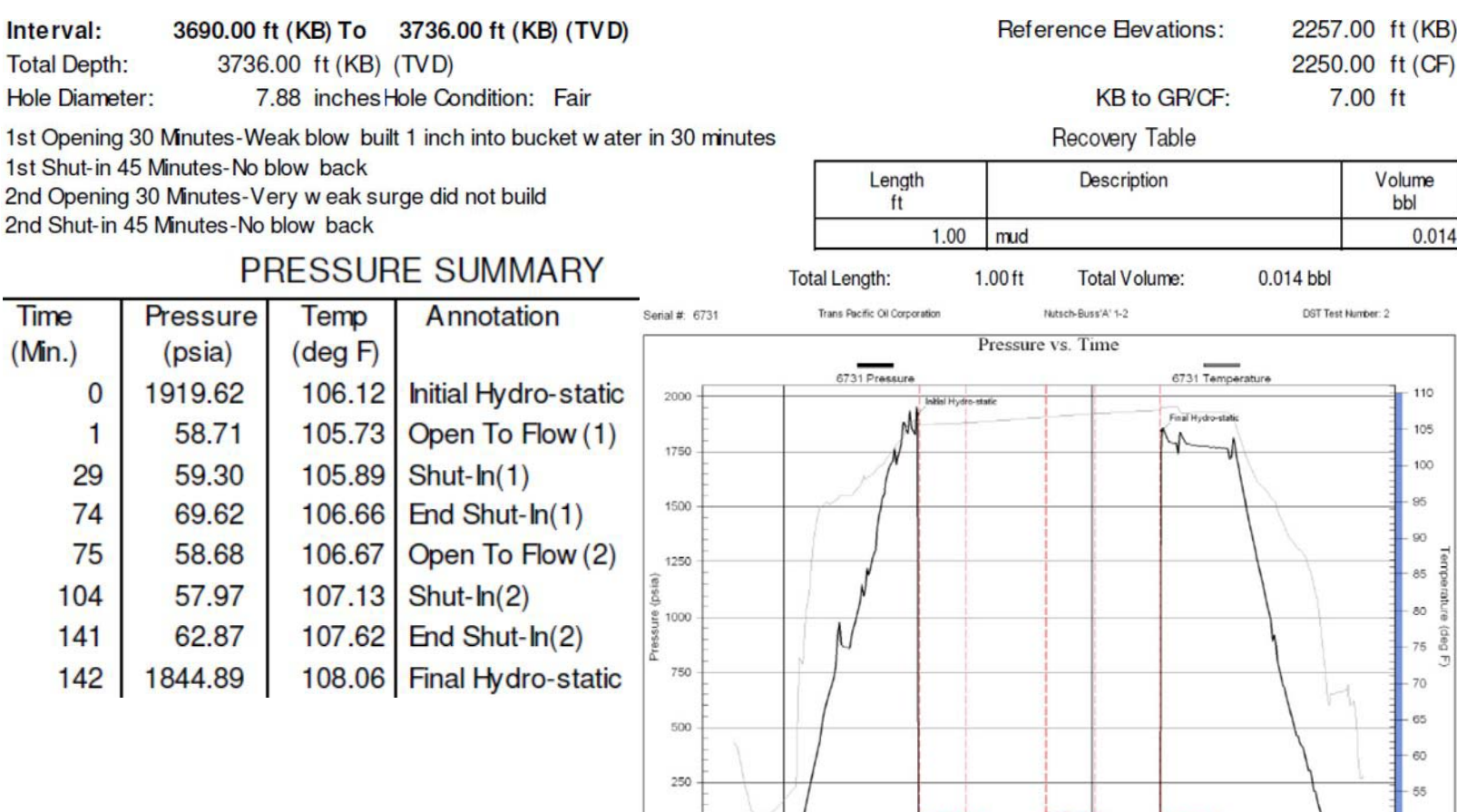
Swf Csg Ran 5 fs. (211) new 8-5/8" x 23# csg. set @ 218' w/ 12' landing pin Cemented w/ 160 sx Common, 3% CC, 2% Flu. Cement did circulate. Plug down @ 2:15 p.m. on 5-6-13.
Perf 91 fs new 5-1/2" 14# csg @ 3813' w/ 145' xsg. PC @ 1687'.
 3813' - 15' OH

5/4/2013 Move in, rig up.
 5/6/2013 Spud @ 8:30 a.m.
 5/7/2013 Drilling @ 937'.
 5/8/2013 Drilling @ 2277'.
 5/9/2013 Drilling @ 2988'.
 5/10/2013 Drilling @ 3418'.
 5/11/2013 DST #1 3591'-3629' (LKC 70', 90' & 100' zones)
 5/12/2013 DST #2 3690'-3736' (LKC 180', 200' & 220' zones)
 5/13/2013 DST #3 3767'-3815' (5' Arbuckle Penetration)

GENERAL INFORMATION:
 Formation: **LKC** Deviated: **No** Whipstock: **ft (KB)** Test Type: **Conventional Bottom Hole (Initial)**
 Time Tool Opened: 07:27:00 Tester: **Jared Scheck**
 Time Test Ended: 12:00:30 Unit No: **3320**

Interval: **3591.00 ft (KB) To 3629.00 ft (KB) (TVD)** Reference Elevations: **2257.00 ft (KB)**
 Total Depth: **3629.00 ft (KB) (TVD)** **2250.00 ft (CF)**
 Hole Diameter: **7.88 inches** Hole Condition: **Fair** KB to GR/CF: **7.00 ft**

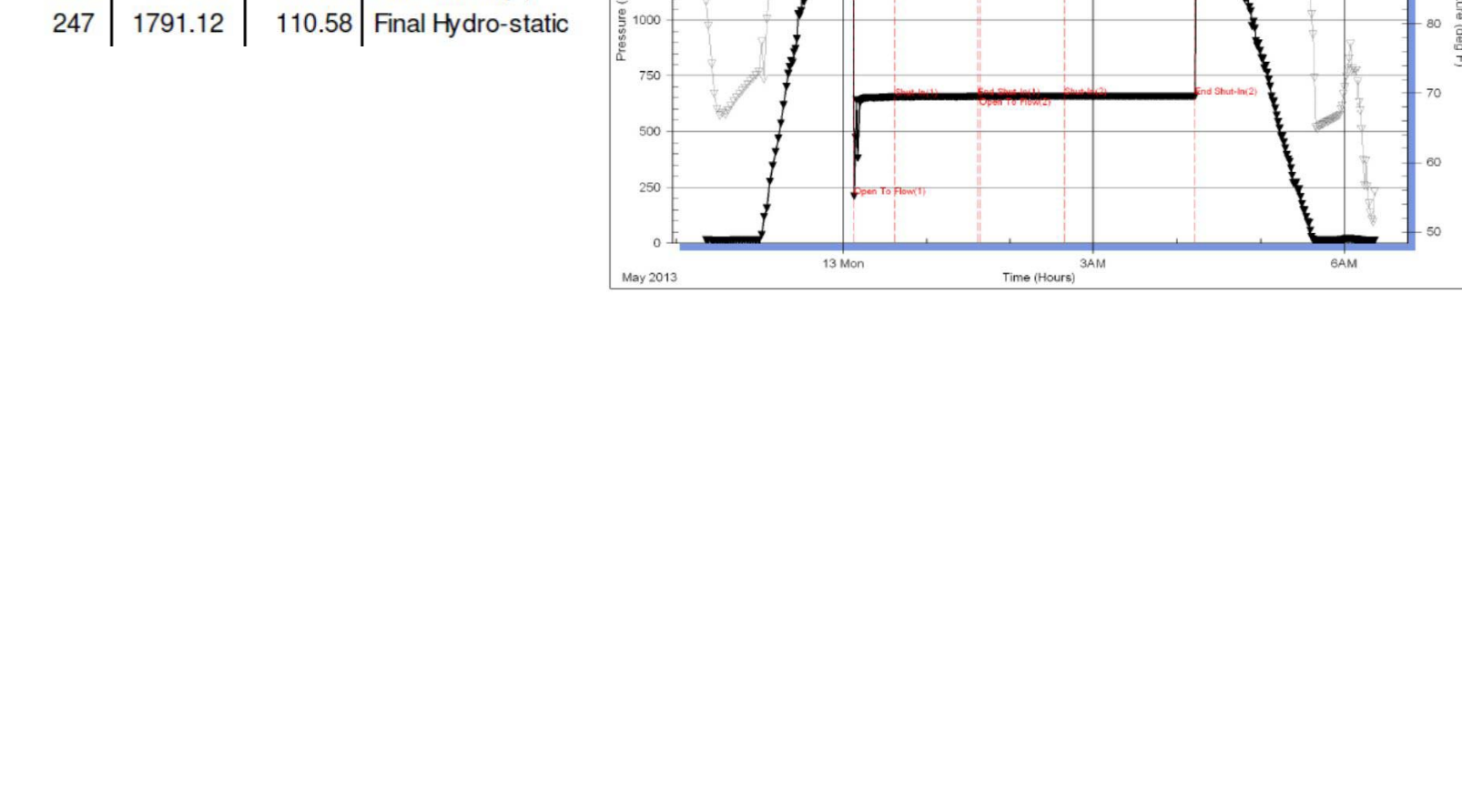
1st Opening 30 Minutes-Very weak bow built 1/4 inch into bucket w/ water in 30 minutes
 1st Shut-in 45 Minutes-No blow back
 2nd Opening 45 Minutes-Very weak bow built 1 inch into bucket w/ water in 45 minutes
 2nd Shut-in 60 Minutes-No blow back



GENERAL INFORMATION:
 Formation: **LKC** Deviated: **No** Whipstock: **ft (KB)** Test Type: **Conventional Bottom Hole (Initial)**
 Time Tool Opened: 07:27:00 Tester: **Jared Scheck**
 Time Test Ended: 08:37:30 Unit No: **3320**

Interval: **3690.00 ft (KB) To 3736.00 ft (KB) (TVD)** Reference Elevations: **2257.00 ft (KB)**
 Total Depth: **3736.00 ft (KB) (TVD)** **2250.00 ft (CF)**
 Hole Diameter: **7.88 inches** Hole Condition: **Fair** KB to GR/CF: **7.00 ft**

1st Opening 30 Minutes-Strong bow built 1/2 inch from bottom of bucket and died off
 2nd Opening 60 Minutes-Very weak surge did not build
 2nd Shut-in 45 Minutes-No blow back



GENERAL INFORMATION:
 Formation: **Arbuckle** Deviated: **No** Whipstock: **ft (KB)** Test Type: **Conventional Bottom Hole (Initial)**
 Time Tool Opened: 00:07:30 Tester: **Jared Scheck**
 Time Test Ended: 06:22:00 Unit No: **3320**

Interval: **3767.00 ft (KB) To 3815.00 ft (KB) (TVD)** Reference Elevations: **2257.00 ft (KB)**
 Total Depth: **3815.00 ft (KB) (TVD)** **2250.00 ft (CF)**
 Hole Diameter: **7.88 inches** Hole Condition: **Fair** KB to GR/CF: **7.00 ft**

1st Opening 30 Minutes-Strong bow built 1/2 inch from bottom of bucket and died off
 2nd Opening 60 Minutes-Very weak surge did not build
 2nd Shut-in 45 Minutes-No blow back

