

COMPANY HFC Oil Operations, Inc.
 WELL Bentley-Lower Unit # 29-1
 FIELD Lilledal

LOCATION 2318' FNL + 2434' FEL
 SEC. 29 TWP. 15S RGE. 27W

COUNTY Grove
 STATE Kansas

OPERATOR HFC Oil Operations, Inc. #1
 CONTRACTOR HZ Rig #1
 COMM. 7-25-13
 CASING RECORD
 Casing: 8-1-13
 PROD. None
 SURF: 48' @ 2nd
 PROD. None
 TOTAL DEPTH DRILLERS: 4370'
 DIL MZ

PRODUCTION
 ELEVATION KB 2472
 DF 2161
 GL 2161
 Drilling Measured from: 48'
 to: 70'
 Sample taken from: 3650' to: 70'
 Geological Supervision from: 3680' to total depth
 Wellbore Geologist: Anne Dunning
 Electrical Survey: Pioneer
 CML/COR

FORMATION	SAMPLE TOP	ELECTRICAL LOG	SURFACE POSITION	STRUCTURAL POSITION
Tag Anhydrite	NA	1905	+524	+22
Base Anhydrite	NA	1951	+521	+2A
Heesner	3672	3679	-1267	+10
Lansing	3712	3717	-1248	+14
Frank	3753	3760	-1198	+14
Fort Scott	4104	4102	-1550	+14
Miss	4124	4122	-1744	+19
Miss	4314	4322	-1858	+23

REFERENCE WELL FOR STRUCTURE Straka Drilling Co.
 C-Well SE Sec. 29-15S-27W
 Gridsheet #1

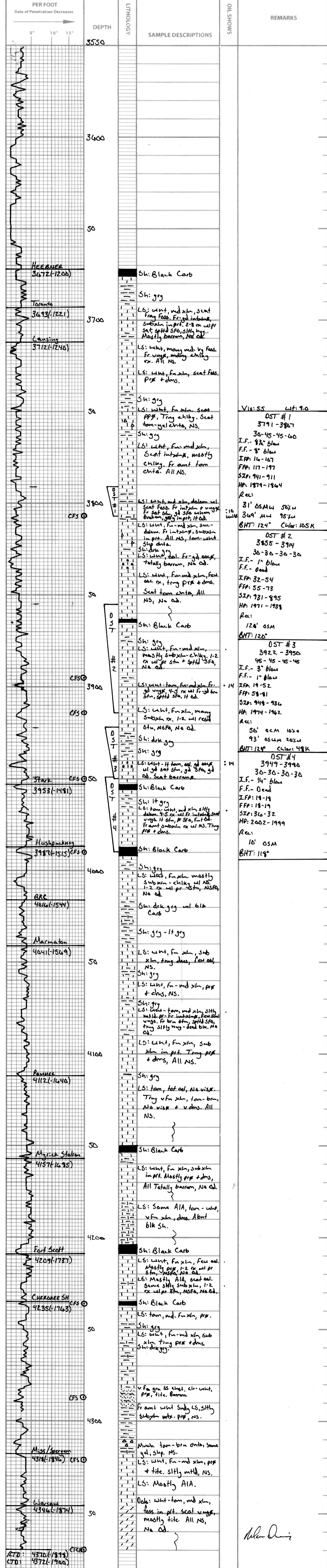
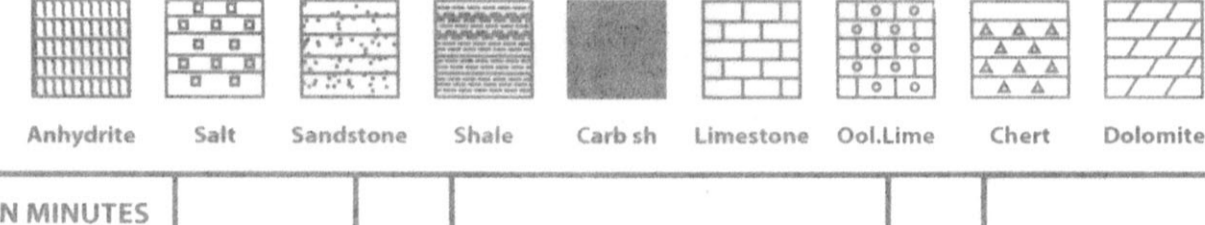
DRILL STEM TESTS

No.	Interval	HP/Time	ISP/Time	FFP/Time	ESP/Time	HP-FHP	RECOVERY

REMARKS AND RECOMMENDATIONS:
 Due to negative DST results + log evaluations, it was decided to plug + abandon this well.

Alan Davis

LEGEND



Alan Davis