

DATE TIME AND SAMPLE LOG

TRANS PACIFIC OIL CORP.  
HANKS 'C' #1-10

DEVIATIONS

1/2 1/2 SE  
10 17S 27W

2590

2581

LANE Ks

Meas. made Are All  
From KB

DUKE Rig #4

8 7/8" @ 223

6/4/13 6/14/13  
4545 4548  
3700 Chem

Comp Dam  
Dam

3800

RTD

3500

RTD

3600

RTD

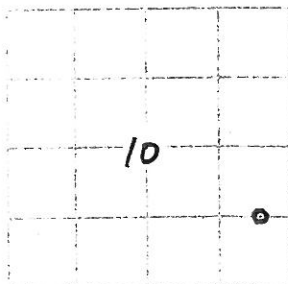
3750

RTD

Michael Kidwell

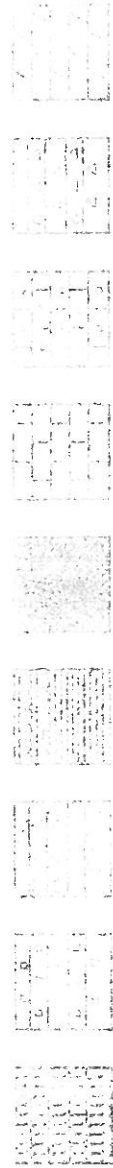
FORMATION TOPS (FT) SAMPLES

Anhydrite	1990	4600	
B/Anhy	2024	4566	
Heebner Sh	3844	4254	3842
Lansing	3882	4292	3882
Stack Sh	4135	4545	4134
BKC	4205	4615	4208
Pl. Scott	4385	4795	4384
Cherokee Sh	4411	4821	4410
Miss ls.	4518	4928	4512



REMARKS

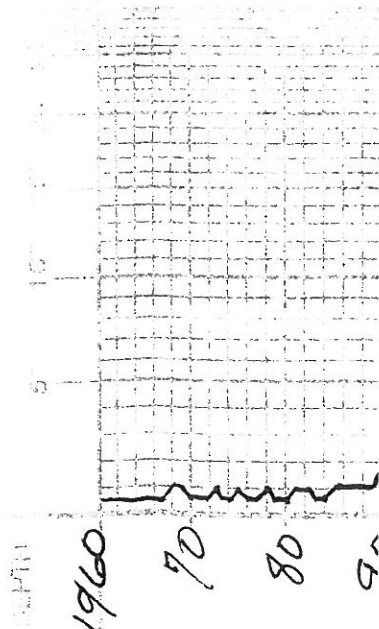
LEGEND



SCALE 1" = 100'

DEPTH IN FEET  
This is a vertical measurement

DEPTH IN FEET



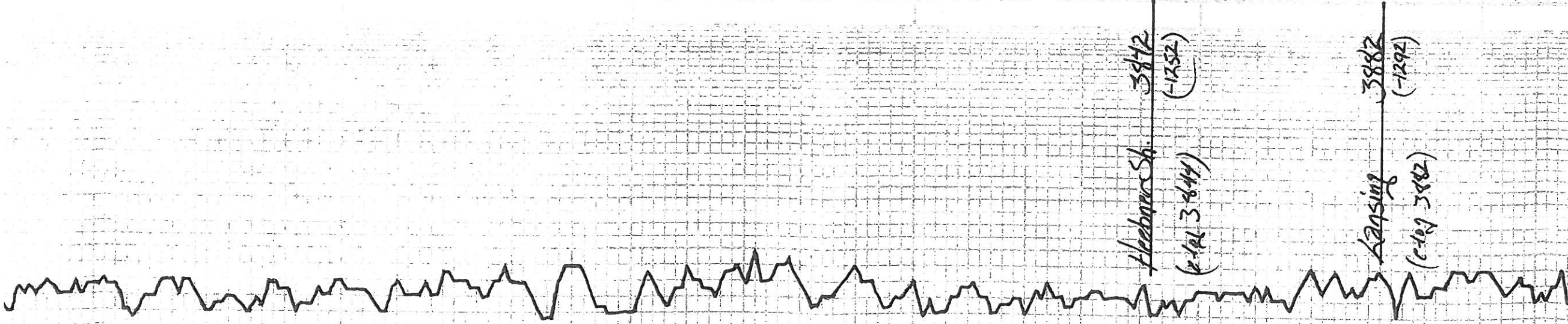
CELL 101

1960  
70  
80  
90  
2000  
10  
20  
30  
40

3500  
10  
20  
30  
40  
50  
60  
70  
80  
90  
3600  
10  
20  
30  
40  
50  
60  
70



10 50 60 70 80 90 3700 10 20 30 40 50 60 70 80 90 3800 10 20 30 40 50 60 70 80 90 3900 10



15-17 gny vr fa xln  
at 15th of pass

15- gny vr fa qm  
31th

sh- b1k comb

s/15th - 17 gny

15- erm vr fa xln eky  
c/pt- wbt bky

sh- gny

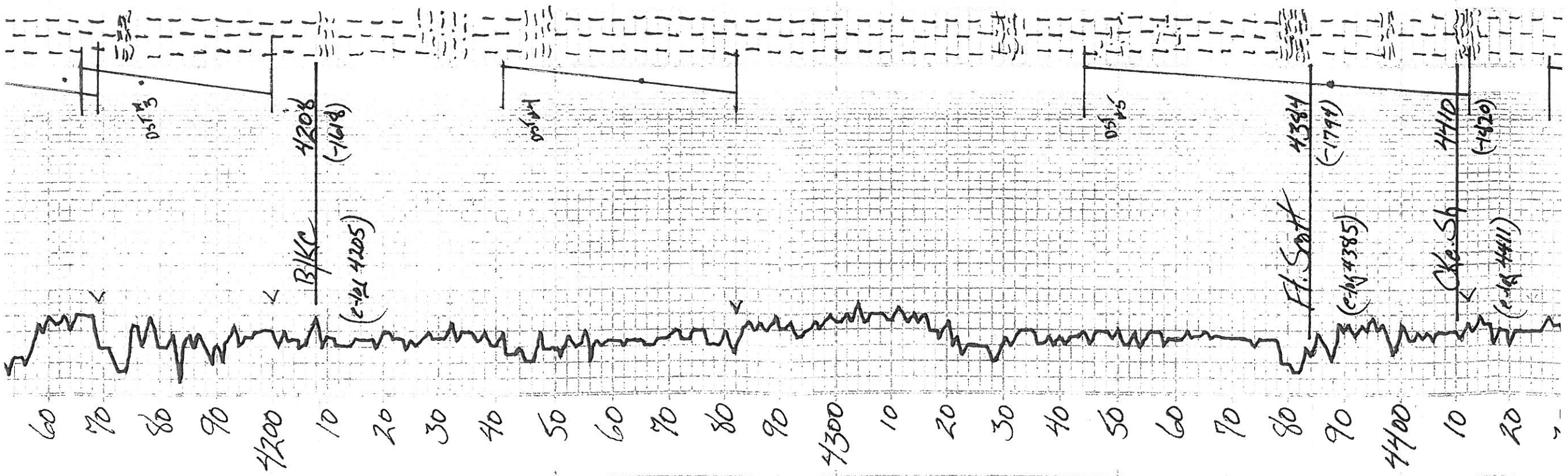
15- erm / 15th vr fa xln  
ool sh see xln  
s/ 17th 30th

15- fan vr fa xln  
c/pt - 17 gny bky

15- / 15th- erm vr fa xln

s/ 15th - gny





LS-H tan vrfn xln  
 @ 51 cky

LS-H tan c/m vrfn xln  
 sl. cal. sl. cal. vrfn xln  
 pr. vrfn xln sl. cal. xln  
 Sh-blk carb

LS-qry vrfn xln

LS-H tan H tan vrfn xln  
 med. xln. off. sl. cal.  
 xln. 500. carb. sl. cal.  
 sent. re. w/ l. p. p. d.

LS-H tan vrfn xln

Sh-blk

LS-H tan vrfn xln

LS-cm vrfn xln  
 sl. cal.

Sh-bln - qry

LS-cm vrfn xln

Sh-qry

LS-H tan vrfn xln  
 sl. cal.

LS-qry red. sl. cal.

SH-bln - qry red.

LS-H tan c/m med. xln  
 sec. xln. sent. vrfn xln  
 at sl. cal. comp. sh  
 SFB. 110. out.

LS-H tan vrfn xln

LS-H tan sl. cal.

LS-H tan vrfn xln  
 carb. qry. sl. cal.

LS-qry vrfn xln

Sh-qry blk

LS-H tan vrfn xln

LS-qry vrfn xln  
 sl. cal.

LS-H tan vrfn xln  
 sl. cal.

Sh-blk

LS-qry vrfn xln  
 off. sec. xln. off. vrfn xln  
 carb. xln. med. xln. 6.5 ft  
 sh. cal. 110. out.

Sh-qry

LS-H tan vrfn xln  
 sent. cal.

Sh-blk

LS-cm vrfn xln  
 sl. cal.

ISP 856  
 FSP 820  
 IMP 1964  
 FHP 1962

DST #3  
 4166-4200  
 30-75-60-90  
 1st open - BTM  
 2nd open - BTM  
 Rec.

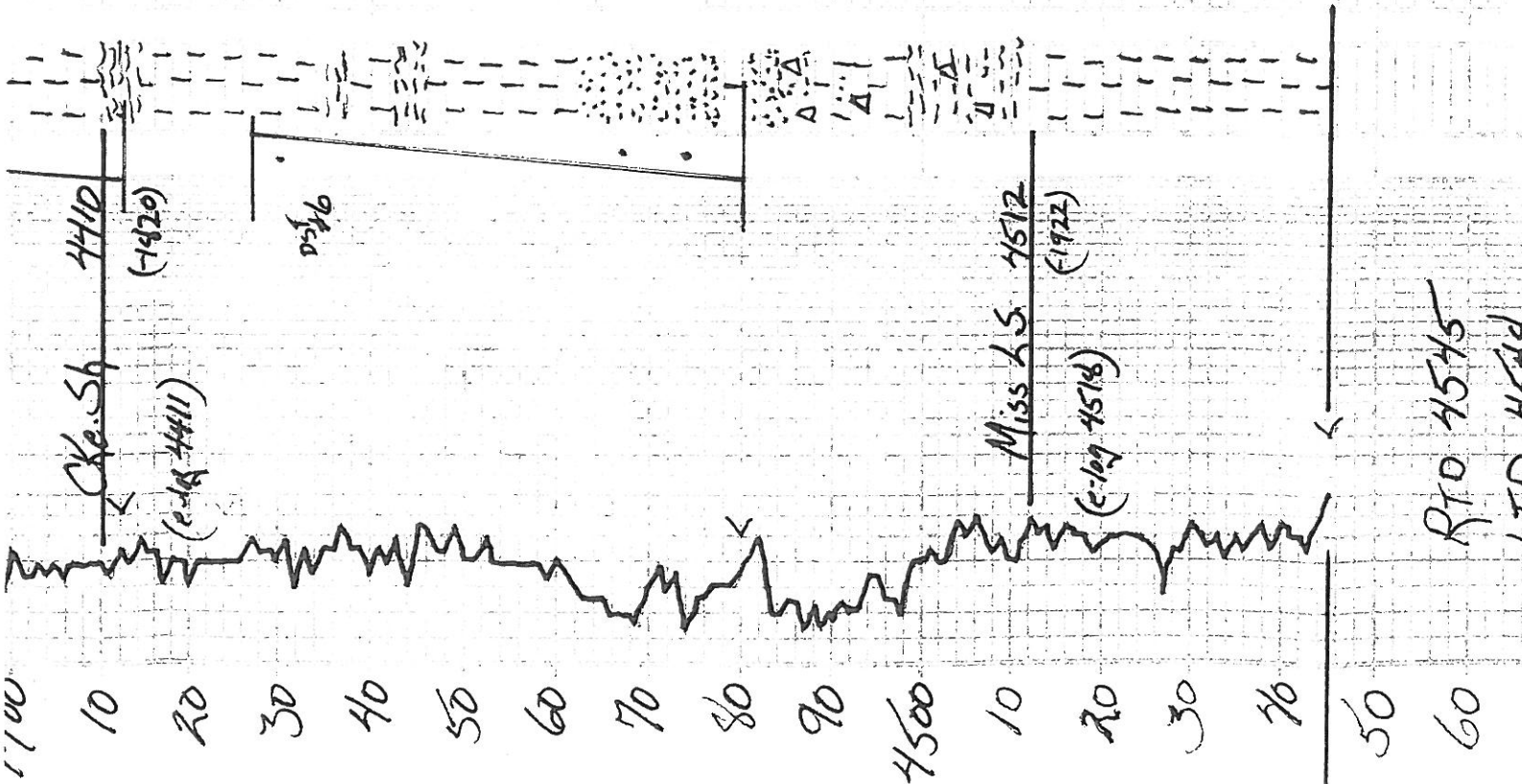
IFP 6-18  
 FFP 20-35  
 ISJP 831  
 FSP 804  
 IMP 1987  
 FHP 1981

DST #4  
 4241-4282  
 30-75-60-90  
 1st open - C  
 2nd open - B  
 Rec.

IFP 8-12  
 FFP 11-19  
 ISJP 180  
 FSP 114  
 IMP 2026  
 FHP 2025

DST #5  
 4344-4411  
 30-75-60-90  
 1st open -  
 2nd open - L  
 Rec.

IFP 24-58  
 FFP 65-107  
 ISJP 880  
 FSP 815  
 IMP 2094  
 FHP 2093



LS-14 day vr fu xln  
sh-bilk

LS-CRM vr fu xln  
stcky

LS-14 tan vr fu xln  
12ms w/ls SFO  
no adv pr xls

sh-bilk

LS-tan CRM vr fu xln

LS-qiy vr fu xln

SS-wht vr fu qin  
w/1 sort frnt

SS-wht- vr fu qin  
w/1 sort frnt  
SFO  
2 bin sh SFO xln

SS-wht vr fu qin fight  
clrt-bin crang

LS-tan vr fu xln

sh-qiy

LS-CRM tan vr  
fxln ool sl pass

LS-top vr fu xln  
ool pass

LS-CRM qiy vr fu xln  
ool pass

LS-CRM qiy vr fu xln  
ool pass

DST #6  
4427-4480  
30-75-60-90

1st open-B  
2nd open-BT  
Rec!

I FP 7-44  
F FP 47-86  
F SFP 1230  
F SFP 1193  
I HP 2142  
F HP 2142

LS-14  
LS-14  
LS-14

1840