



**Scale 1:240 (5"=100') Imperial
Measured Depth Log**

Well Name: HILL "A" #3-23
Location: SW - SW of Sec. 23 - T. 30 S. - R. 19 W.
License Number: A.P.I. #15-097-21,760-00-00
Spud Date: 06/04/2013
Surface Coordinates: 660' FSL & 660' FWL

Region: IOWA CO., KS.
Drilling Completed: 06/12/2013

**Bottom Hole
Coordinates:**
Ground Elevation (ft): 2230' **K.B. Elevation (ft):** 2241'
Logged Interval (ft): 632' **To:** 5203' **Total Depth (ft):** 5200'
Formation: MISSISSIPPIAN
Type of Drilling Fluid: CHEMICAL/POLYMER/GEL

Printed by MUD.LOG from WellSight Systems 1-800-447-1534 www.WellSight.com

OPERATOR

Company: McCOY PETROLEUM CORPORATION KCC LIC. NO. # 5003
Address: 8080 E. CENTRAL, STE. 300
WICHITA, KANSAS 67206-2366

GEOLOGIST

Name: DAVID P. WILLIAMS, P.G.
Company: DW ENERGY, LLC
Address: 312 N. BROADVIEW STREET
WICHITA, KANSAS 67208

Casing & Deviation

Spud at 8:30 pm on 05/04/13. Drilled 12-1/4" hole to 640'. Ran 13 joints of new 24# 8-5/8" surface casing, Tallied 621', set at 635' KB. Welded straps on bottom 3 and top 2 joints. Tacked collars on remainder. Cemented with 150 sks MDC; 3% CC; 1/2# CF, tailed with 125 sks Common ; 2% Gel; 3% CC; 1/2# CF. Plug down at 12:15 pm 06/05/13. Quality Well Service ticket #5905 Cement did circulate.

Deviation Survey's Taken= @ 640' = 3/4 degree; @ 4465' = 3/4 degree; @ 5120' = 3/4 degree.

OTHER SYMBOLS

- POROSITY**
 [E] Earthy
 [B] Fenest
 [F] Fracture
 [X] Inter
 [M] Moldic
 [O] Organic
 [P] Pinpoint

- [V] Vuggy
SORTING
 [W] Well
 [M] Moderate
 [P] Poor

- ROUNDING**
 [R] Rounded
 [r] Subrnd
 [a] Subang
 [A] Angular

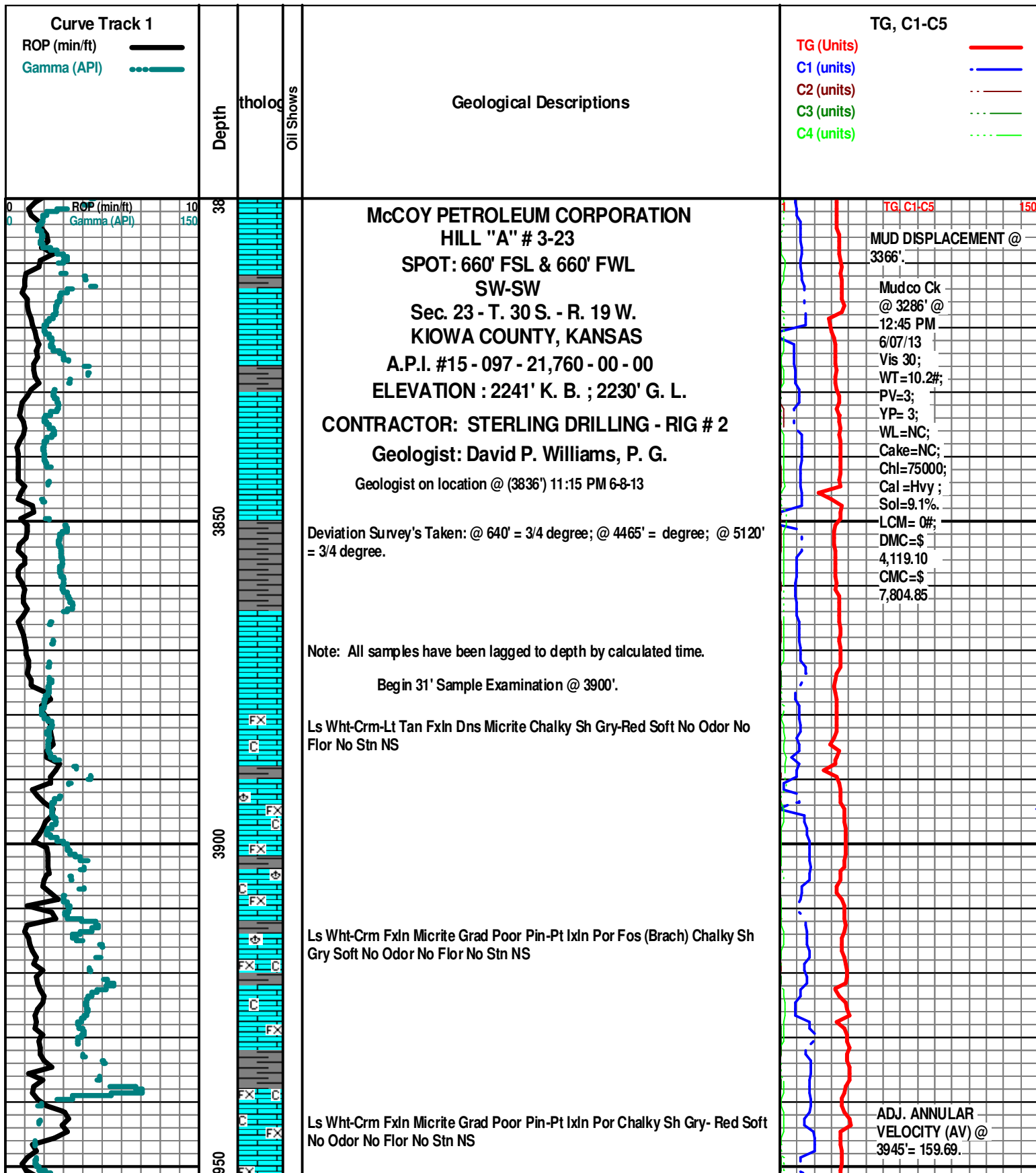
- [●] Even
 [◉] Spotted
 [○] Ques
 [◻] Dead

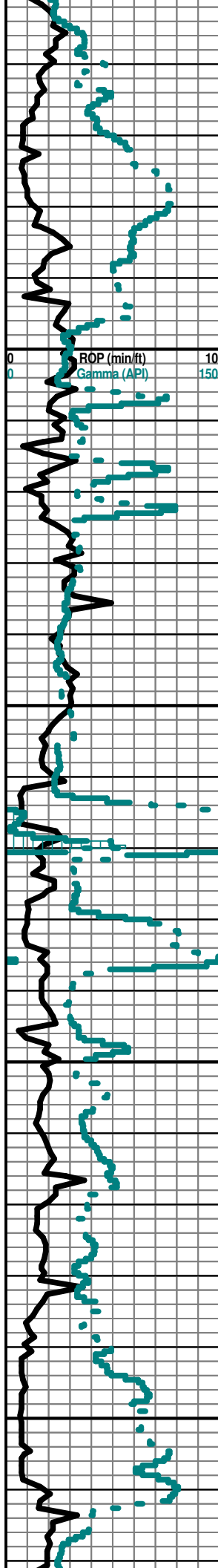
[■] Core

- EVENT**
 [◻] Rft
 [▶] Sidewall

- OIL SHOW**
 [X] Gas show

- INTERVAL**
 [■] Dst
 [■] Dst_alt





Ls Wht-Crm FxIn Micrite Grad Poor Pin-Pt IxIn Por Chalky Sh Gry- Red Soft
No Odor No Flor No Stn NS

Ls Wht-Crm FxIn Micrite Grad Poor-Fair IxIn Vug Por Chalky Sh Char-Gry-
Red Soft-Fissil No Odor No Flor No Stn NS

LECOMPTON B 4024' (- 1783)

Ls Wht FxIn Micrite Grad Poorr IxIn Pin-Pt Por (w/Pyr Inclus) Fos (Crin)
Chalky Sh Char-Gry- Red Fissil-Soft No Odor No Flor No Stn NS

QUEEN HILL SHALE 4064' (-1823)

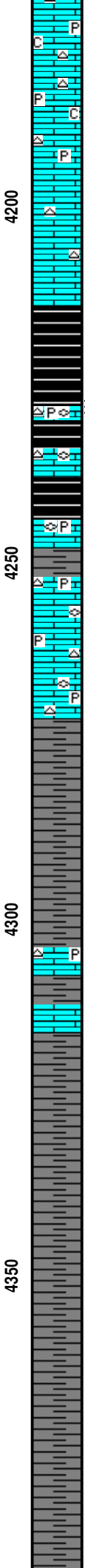
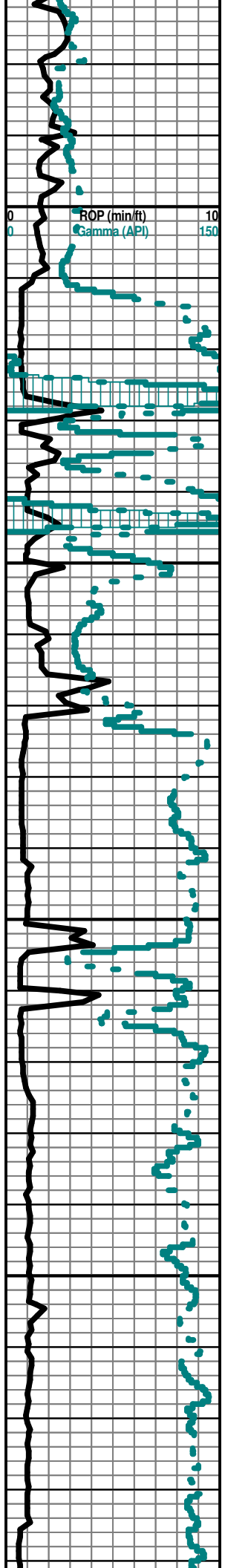
Sh Blk Carb- Char-Gry-Aqua Fissil-Soft Ls Wht FxIn Micrite Grad Poor IxIn
Pin-Pt Por Cht Amber Fos (Crin) Pyr Mass Chalky No Odor No Flor No Stn NS

Ls Wht FxIn Micrite Grad Poor IxIn Pin-Pt Por Pyr Mass Fos (Brach) Chalky
Sh Blk Carb-Char-Gry Fissil-Soft No Odor No Flor No Stn NS

Ls Wht-Crm FxIn Micrite Grad Poor IxIn Pin-Pt Por Pyr Mass Fos (Fuss)
Chalky Sh Blk Carb-Char-Gry Fissil-Soft No Odor No Flor No Stn NS

TG C1-C5 150

Mudco Ck
@ 4205' @
11:10 AM
6/08/13 Vis
50;
WT=9.0#;
PV=16;
YP= 19;



Ls Wht-Crm Fxln Micrite Grad Poor Ixln Pin-Pt Por Cht Wht Op Shp Vit Pyr
 Mass Chalky Sh Blk Carb-Char-Gry Fissil-Soft No Odor No Flor No Stn NS

WL=12.4;
 Cake=1;
 Chl=7800;
 Cal =20 ;
 Sol=4.5%
 LCM= 0#;
 DMC=\$
 4,171.10
 CMC=\$
 11,975.95

TG C1-C5 150

Ls Wht-Crm Fxln Micrite Grad Poor Ixln Pin-Pt Por Cht Wht-Gry Op Shp Vit
 Pyr Mass Fos (Fuss) Chalky Sh Blk Carb-Char-Gry Fissil-Soft No Odor No
 Flor No Stn NS

SHALE GAS
 KICK @ 4227'=
 78 UNITS.

HEEBNER 4238' (-1997)

ADJ. AV @
 4238' = 161.66.

TORONTO 4250' (- 2009)

Ls Wht-Crm Fxln Micrite Grad Poor Ixln Pin-Pt Por Cht Wht-Gry Translu-Op
 Shp Vit Pyr Mass Fos (Fuss) Chalky Sh Blk Carb-Char-Gry Fissil-Soft No
 Odor No Flor No Stn NS

DOUGLAS 4271' (-2030)

Sh Char-Gry-Grn Fissil-Soft Ls Wht-Crm Fxln Micrite Grad Poor Ixln Pin-Pt
 Por Cht Wht-Gry Translu-Op Shp Vit Pyr Mass Fos (Fuss) Chalky No Odor
 No Flor No Stn NS

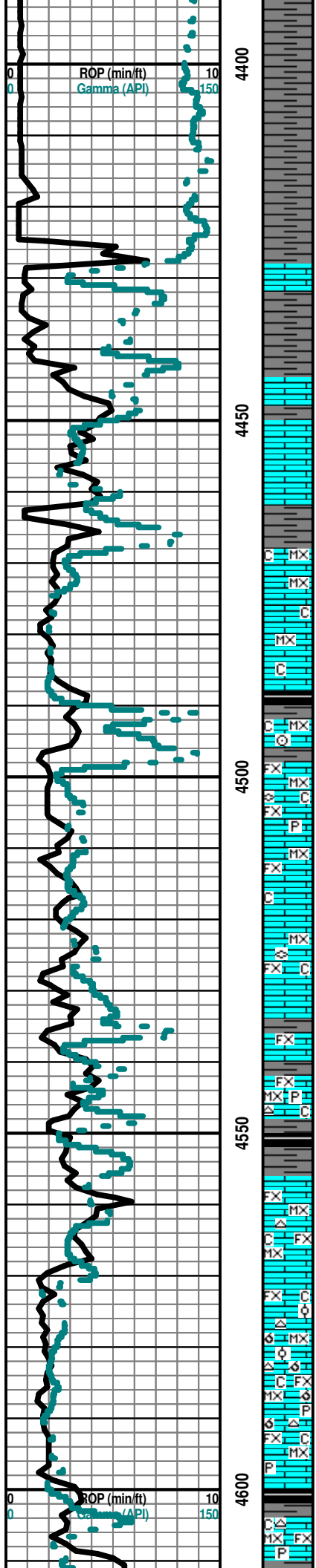
Sh Char-Gry-Grn Fissil-Soft Ls Wht-Crm Fxln Micrite Grad Poor Ixln Pin-Pt
 Por Cht Wht-Gry Translu-Op Shp Vit Qtz Ss Gry V-FGrn Well Sort Carb Poor
 IGran Por Dns-Friable (w/Pyr Inclus) Chalky No Odor No Flor No Stn NS

Sh Char-Gry-Grn Fissil-Soft Ls Wht-Crm Fxln Micrite Grad Poor Ixln Pin-Pt
 Por Cht Wht-Gry Translu-Op Shp Vit Qtz Ss Gry V-FGrn Well Sort Carb Poor
 IGran Por Dns-Friable (w/Pyr Inclus) Chalky No Odor No Flor No Stn NS

Begin 10' Wet & Dry Sample Examination @ 4400'.

Sh Char-Gry-Grn Fissil-Soft Ls Wht-Crm Fxln Micrite Grad Poor Ixln Pin-Pt
 Por Cht Wht-Gry Translu-Op Shp Vit Qtz Ss Gry V-FGrn Well Sort Carb Poor
 IGran Por Dns-Friable (w/Pyr Inclus) Chalky No Odor No Flor No Stn NS

Sh Char-Gry-Grn Fissil-Soft Ls Wht-Crm Fxln Micrite Grad Poor Ixln Pin-Pt
 Por Cht Wht-Gry Translu-Op Shp Vit Qtz Ss Gry V-FGrn Well Sort Carb Poor
 IGran Por Dns-Friable (w/Pyr Inclus) Chalky No Odor No Flor No Stn NS



Sh Char-Gry-Grn Fissil-Soft Ls Wht-Crm Fxln Micrite Grad Poor Ixln Pin-Pt
 Por Cht Wht-Gry Translu-Op Shp Vit Qtz Ss Gry V-FGrn Well Sort Carb Poor
 IGran Por Dns-Friable (w/Pyr Inclus) Chalky No Odor No Flor No Stn NS

TG C1-C5 150

Sh Char-Gry-Grn Fissil-Soft Ls Wht-Crm Fxln Micrite Grad Poor Ixln Pin-Pt
 Por Cht Wht-Gry Translu-Op Shp Vit Qtz Ss Gry V-FGrn Well Sort Carb Poor
 IGran Por Dns-Friable (w/Pyr Inclus) Chalky No Odor No Flor No Stn NS

IATAN (BROWN LIME) 4428' (- 2187)

NO SAMPLE CAUGHT

LANSING 4444' (- 2203)

NO SAMPLE CAUGHT

NO SAMPLE CAUGHT

LANSING "B" 4468' (- 2227)

BIT TRIP @ 4465'

Poor Spl Trip Debris Abd Sh-Char-Gry-Grn Soft-Fissil Ls Wht -Crm - Tan
 Microxln No Vis Por Chalky No Odor No Stn No Flor NS

Poor Spl Trip Debris Abd Sh-Char-Gry-Grn Soft-Fissil Ls Wht - Crm - Tan
 Microxln No Vis Por Chalky No Odor No Stn No Flor NS

Sh Gry-Char-Grn-Blk Carb Soft-Fissil Ls Wht-Crm-Tan-Gry Fxln - Microxln
 Dns Micrite Grad Poor Ixln Por Fos (Crim) Chalky No Odor No Flor No Stn
 NS

Ls Wht-Crm-Tan-Gry Fxln-Microxln Dns Micrite Grad Poor Ixln Por (w/Fos
 (Fuss) Inclus) Chalky Pyr Mass Sh Gry-Char-Grn Soft-Fissil No Odor No Flor
 No Stn NS

Ls Wht-Crm-Tan-Gry Fxln-Microxln Dns Micrite Grad Poor Ixln Por Chalky
 Sh Gry-Char-Grn Soft-Fissil No Odor No Flor No Stn NS

Ls Crm-Tan-Gry Fxln-Microxln Dns Micrite Grad Poor Ixln Por Fos (Fuss)
 Chalky Sh Gry-Char-Grn Soft-Fissil No Odor No Flor No Stn NS

Ls Wht-Crm-Tan Fxln-Microxln Dns Micrite Grad Poor Ixln Por Chalky Sh
 Gry-Char-Grn Soft-Fissil No Odor No Flor No Stn NS

Ls Wht-Crm-Tan Fxln-Microxln Dns Micrite Grad Poor Ixln Por Cht
 Amber-Gry Translu Shp Vit Pyr Mass Chalky Sh Gry-Char-Grn Soft-Fissil No
 Odor No Flor No Stn NS

ADJ. AV @
 4547' = 139.02.

Sh Blk Carb-Gry-Char-Grn Soft-Fissil Ls Wht-Crm-Tan Fxln-Microxln Dns Micrite Grad Poor
 Ixln Pin-Pt Por Cht Amber-Gry Translu Shp Vit Chalky No Odor No Flor No Stn NS

LANSING "F" 4556' (- 2315)

Ls Wht-Crm-Tan Fxln-Microxln Dns Micrite Grad Poor Ixln Pin-Pt Por Cht
 Amber-Gry Translu Shp Vit Chalky Sh Blk Carb-Gry-Char - Grn Soft-Fissil No
 Odor No Flor No Stn NS

Ls Wht-Crm-Lt Tan Microxln-Fxln Micritic Grad Poor-Fair OOM Por Poor InterOOM Por (Small
 OOids in pl) V Poor Leaching Poor Develop Cht Gry Op Shp Vit Chalky Sh Char- Gry-Blk Carb
 Fissil No Odor No Stn No Flor NS

Ls Wht-Crm-Lt Tan Microxln-Fxln Micritic Grad Poor-Fair OOM Por Poor
 InterOOM Por (Small OOids in pl) V Poor Leaching Poor Develop Cht
 Wht-Gry Op Shp Vit Pyr Mass Chalky Sh Char- Gry-Blk Carb Fissil No Odor
 No Stn No Flor NS

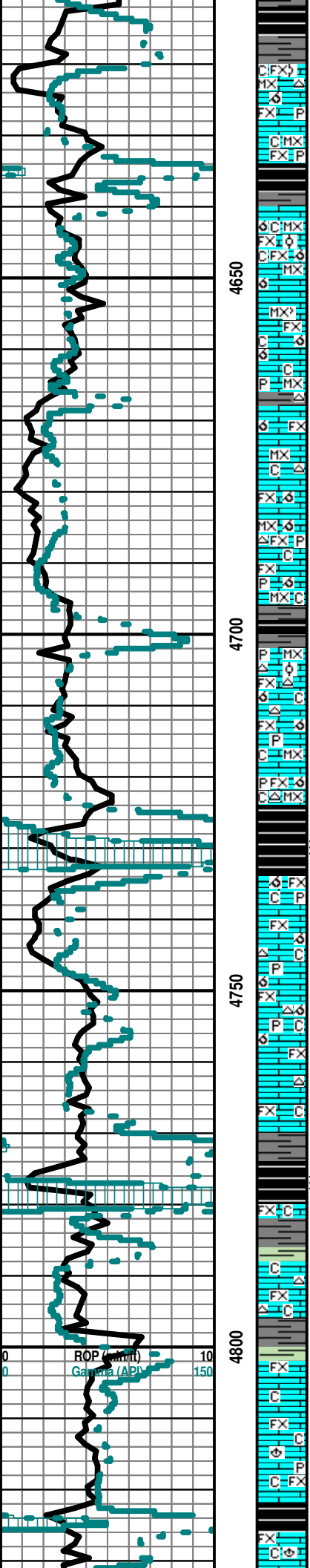
Ls Wht-Crm-Lt Tan Microxln-Fxln Micritic Grad Tr Poor OOM Por AA Cht Lt Tan Op Shp Vit
 Pyr Mass Chalky Sh Char- Gry- Grn- Blk Carb- Aqua Fissil No Odor No Stn No Flor NS

Ls Wht-Crm-Lt Tan Microxln-Fxln Micritic No Vis Por Cht Lt Tan Op Shp Vit
 Pyr Mass Chalky Sh Char- Gry- Grn- Blk Carb- Aqua Fissil No Odor No Stn
 No Flor NS

TG C1-C5 150

? SHALE GAS KICK
 = 79 UNITS

Ls Wht-Crm-Lt Tan Microxln-Fxln Micritic No Vis Por Cht Lt Tan Op Shp Vit Pyr Mass Chalky



Sh Char-Gry-Grn-Blk Carb-Aqua Fissil No Odor No Stn No Flor NS

KANSAS CITY "H" DRUM 4621' (-2370)

Ls Wht-Crm-Lt Tan Microxl-n-Fxl n Micritic (w/Pry Inklus) Grad Fair-Med OOM Por Poor- Fair InterOOM Por (Tr/OOL (Small OOids in pl) V Poor-Fair Leaching (Tr Fair Vug) Poor Develop Cht Wht Op Shp Vit Chalky Sh Char- Gry (w/Pry Inklus)-Grn Fissil No Odor No Stn No Flor NS

Ls Wht-Crm-Lt Tan Microxl-n-Fxl n Micritic (w/Pry Inklus) Grad Fair-Med OOM Por Poor- Fair InterOOM Por (Tr/OOL (Small OOids in pl) V Poor-Fair Leaching (Tr Fair Vug) Poor Develop Pyr Mass Chalky Sh Blk Carb-Char- Gry- Grn Fissil No Odor No Stn No Flor NS

Ls Wht-Crm-Lt Tan Microxl-n-Fxl n Micritic Fair OOM Por Poor- Fair InterOOM Por Poor-Fair Leaching Poor Develop Dec Chalky Sh Blk Carb- Char- Gry- Grn- Aqua Fissil No Odor No Stn No Flor NS

Ls Wht-Crm-Lt Tan Microxl-n-Fxl n Mostly Micrite Tr Fair OOM Por Poor- Fair InterOOM Por Poor-Fair Leaching Poor Develop Dec AA Chalky Sh Blk Carb -Char -Gry (w/Pry Inklus)-Grn-Aqua Fissil No Odor No Stn No Flor NS

Ls Wht-Crm-Lt Tan Microxl-n-Fxl n Mostly Micrite Tr Poor OOM Por AA Cht- Amber-Lt Brn Op Shp Vit Chalky Pyr Mass Sh Char-Gry Fissil No Odor No Stn No Flor NS

Sh Char-Gry Fissil Ls Wht-Crm-Lt Tan Microxl-n-Fxl n Mostly Micrite Grad Fair OOM Por Poor-Fair InterOOM Por Poor-Fair Leaching Poor Develop Cht Wht Op Shp Vit Chalky No Odor No Stn No Flor NS

Sh Char-Gry (w/Pry Inklus)-Aqua Fissil Ls Wht-Crm-Lt Tan Microxl-n-Fxl n Mostly Micrite Grad Fair OOM Por Poor- Fair InterOOM Por Poor-Fair Leaching Poor Develop Cht Wht Op Shp Vit Chalky No Odor No Stn No Flor NS

Sh Blk Carb-Char-Gry (w/Pry Inklus) Fissil Ls Wht-Crm-Lt Tan Microxl-n-Fxl n Mostly Micrite Grad Fair OOM Por Poor- Fair InterOOM Por Poor-Fair Leaching Poor Develop Chalky No Odor No Stn No Flor NS

Sh Char-Gry (w/Pry Inklus)-Blk Carb Fissil Ls Wht-Crm-Lt Tan Microxl-n-Fxl n Mostly Micrite Grad Tr Fair OOM Por Poor InterOOM Por Poor Leaching Poor Develop Dec Cht Wht Op Shp Vit Chalky No Odor No Stn No Flor NS

Ls Crm-Lt Tan-Wht Microxl-n-Fxl n Mostly Micrite Tr Poor OOM Por AA Cht- Wht Op Shp Vit Chalky Pyr Mass Sh Char-Gry Fissil No Odor No Stn No Flor NS

Ls Crm-Lt Tan-Wht Microxl-n-Fxl n Mostly Micrite Poor OOM Por AA (Tr Only) Cht- Wht Op Shp Vit Chalky Sh Blk Carb (w/Pry Inklus) Char-Gry (w/Pry Inklus) Fissil No Odor No Stn No Flor NS

KANSAS CITY "J" DENNNIS 4734' (- 2493)

Ls Lt Tan-Wht VFxl n Mostly Micrite Poor OOM Por Grad Poor OOM Por Poor InterOOM Por Poor Leaching Poor Develop Chalky Sh Blk Carb (w/Pry Inklus) Char-Gry (w/Pry Inklus) Fissil No Odor No Stn No Flor NS

Ls Lt Tan-Wht VFxl n Mostly Micrite Poor OOM Por Grad Poor OOM Por Poor InterOOM Por Poor Leaching Poor Develop Grad Pin-Pt Ixln Por Cht Gry Op Shp Vit Chalky Sh Blk Carb (w/Pry Inklus) Char-Gry (w/Pry Inklus) Fissil No Odor No Stn No Flor NS

Ls Lt Tan-Wht VFxl n Mostly Micrite Poor OOM Por Grad Poor OOM Por Poor InterOOM Por Poor Leaching Poor Develop Grad Pin-Pt Ixln Por Cht Gry Op Shp Vit Chalky Sh Blk Carb (w/Pry Inklus) Char-Gry (w/Pry Inklus) Fissil No Odor No Stn No Flor NS

Ls Lt Tan-Wht Fxl n Mostly Micrite Grad Por Pin-Pt Ixln Por Cht Gry Op Shp Vit Chalky Sh Blk Carb-Char-Gry-Aqua Fissil No Odor No Stn No Flor NS

STARK SHALE 4776' (- 2535)

KANSAS CITY "K" SWOPE 4780' (-2539)

Sh Blk Carb-Char-Gry Fissil Ls Lt Tan-Wht Fxl n Mostly Micrite Grad Fair Pin-Pt Ixln Por (2 Pcs) No Vis Por Chalky No Odor No Stn No Flor NS

Ls Lt Tan-Wht Fxl n Mostly Micrite Grad Fair Pin-Pt Ixln Por Inc No Vis Por Chalky Sh Blk Carb-Char-Gry-Aqua Fissil No Odor No Stn No Flor NS

Ls Lt Tan-Wht Fxl n Mostly Micrite Dns Grad Fair Pin-Pt Ixln Por Cht Gry-Wht Op Shp Vit Chalky Sh Char-Gry-Blk Carb Fissil No Odor No Stn No Flor NS

Ls Lt Tan-Wht Fxl n Mostly Micrite Dns Grad Fair Pin-Pt Ixln Por Chalk Sh Char- Gry- Fissil No Odor No Stn No Flor NS

Ls Lt Tan-Wht-Gry Fxl n Mostly Micrite Dns Grad Fair Pin-Pt Ixln Por Chalk Fos (Brach) Pyr Mass Sh Char-Gry-Blk Carb Fissil No Odor No Stn No Flor NS

HUSHPUCKNEY 4824' (- 2583)

Ls Wht-Gry-Lt Tan Fxl n Mostly Micrite Dns Grad Poor Pin-Pt Ixln Por (3 Pcs) Chalk Fos (Brach) Sh Char-Gry-Blk Carb-Aqua Fissil No Odor No Stn No Flor NS

ADJ. AV @ 4616' = 138.96.

@ 4624' Change Out
Extractor Filter & Gas
Test=115 Units.

Mudco Ck @
4739' @ 2:10
pM 6/09/13
Vis 61;
WT=9.4#;
PV=19;
YP= 21;
WL=10.8;
Cake=1;
Chl=7600;
Cal =20 ;
Sol=7.4%
LCM= 1#;
DMC=\$
574.25
CMC=\$
12,550.20

SHALE GAS
KICK = 106
UNITS

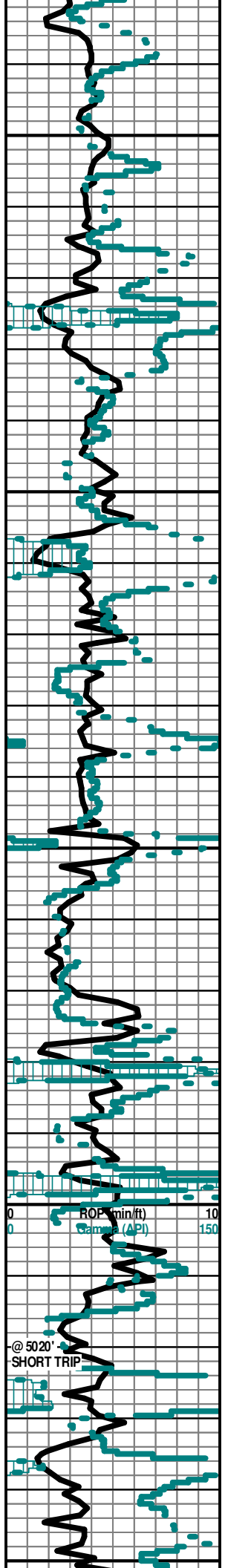
SHALE GAS
KICK = 92
UNITS

@ 4760' Hole Depth
Rezero TookeDAQ in
Geotrailer. Bkgd Gas
Set = 12 Units.

ADJ. AV @ 4761' HOLE
DEPTH' = 133.90.

SHALE GAS KICK
= 106 UNITS.

TG C1-C5 150



4850

4900

4950

5000

5050

Sh Blk Carb-Char-Gry Fissil Ls Wht-Gry-Lt Tan Fxln Mostly Micrite Dns Grad Poor Pin-Pt Ixln Por (3 Pcs) Chalk Fos (Brach) No Odor No Stn No Flor NS

Ls Wht-Gry-Lt Tan Fxln Mostly Micrite Dns Grad Poor Pin-Pt Ixln Por Chalk Fos (Brach) Chalk Sh Char-Gry-Aqua Fissil No Odor No Stn No Flor NS

Ls Wht-Gry-Lt Tan Fxln Mostly Micrite Dns Grad Poor Pin-Pt Ixln Por Chalk Fos (Brach) Chalk Sh Char-Gry-Aqua Fissil No Odor No Stn No Flor NS

Sh Char-Gry-Fissil Siltstn Gry-Lt Brn Ls Crm-Wht Microxln Dns Micrite Chalky No Odor No Stn No Flor NS

Sh Blk Carb-Char-Gry-Lt Brn Carb Fissil Siltstn Gry-Lt Brn Ls Gry-Crm-Wht Microxln Dns Micrite Chalky No Odor No Stn No Flor NS

Ls Wht-Crm Fxln Micrite Grad Fair-Med Pin-Pt Ixln Por Barren Fos (Fuss) Chalky Sh Blk Carb-Gry-Lt Brn-Aqua/Grn-Red Soft-Fissil No Odor No Stn No Flor NS

Ls Wht-Crm Fxln Micrite Grad Fair-Med Pin-Pt Ixln Por Barren Chalky Sh Blk Carb-Gry-Lt Brn-Aqua/Grn-Red Soft-Fissil No Odor No Stn No Flor NS

Sh Blk Carb-Gry-Lt Brn-Aqua/Grn-Red Soft-Fissil Ls Wht-Crm Fxln Micrite Grad Fair-Med Pin-Pt Ixln Por Barren Chalky No Odor No Stn No Flor NS

MARMATON 4912' (- 2671)

Ls Wht Microxln-Fxln Dns Micrite Grad Poor OOM Por Grad Poor OOM Por Poor InterOOM Por Poor Leaching Poor Develop Por Cht Wht Op Shp Vit Chalky Sh Blk Carb-Char-Gry Fissil No Odor No Stn No Flor NS

Ls Wht Microxln-Fxln Dns Micrite Chal Abd Sh Blk Carb-Char-Gry Fissil No Odor No Stn No Flor NS

Ls Wht Microxln-Fxln Dns Micrite No Vis Por Chalk Abd Sh Blk Carb-Char-Gry Fissil No Odor No Stn No Flor NS

Ls Wht Microxln-Fxln Dns Micrite (wTr Calc) No Vis Por Chalk Abd Sh Blk Carb-Char-Gry Fissil No Odor No Stn No Flor NS

PAWNEE 4952' (- 2711)

Ls Wht Microxln-Fxln Dns Micrite No Vis Por Grad Poor Pin-Pt Ixln Por Barren Chalk V Abd Sh Blk Carb-Char-Gry Fissil AA No Odor No Stn No Flor NS

Ls Wht Microxln-Fxln Dns Micrite No Vis Por Barren Chalk V Abd Sh Blk Carb-Char-Gry Fissil AA No Odor No Stn No Flor NS

Ls Wht-Lt Tan Microxln-Fxln Dns Micrite Grad Poor Pin-Pt Por Cht Wht-Crm Op Shp Vit Chalky Sh Blk Carb-Char Fissil No Odor No Stn No Flor NS

FORT SCOTT 4979' (- 2738)

Ls Wht-Lt Tan Microxln-Fxln Dns Micrite Grad Poor Pin-Pt Por Cht Wht-Crm Op Shp Vit Chalky Sh Blk Carb-Char Fissil No Odor No Stn No Flor NS

CHEROKEE SHALE 4996' (- 2755)

Sh Blk Carb-Char Fissil Ls Wht-Lt Tan Microxln-Fxln Dns Micrite Cht Wht-Crm Op Shp Vit Chalky No Odor No Stn No Flor NS
 Ls Wht-Lt Tan Microxln-Fxln Dns Micrite Cht Wht-Crm Op Shp Vit Chalky Sh Blk Carb-Char Fissil No Odor No Stn No Flor NS

30" CFS @ 5020' Ls Wht-Lt Tan Microxln-Fxln Dns Micrite Cht Wht-Crm Op Shp Vit Chalky Sh Blk Carb-Char Fissil No Odor No Stn No Flor NS

60" CFS @ 5020' Ls Wht-Lt Tan Microxln-Fxln Dns Micrite Cht Wht-Crm Op Shp Vit Chalky Sh Blk Carb-Char Fissil No Odor No Stn No Flor NS

Sh Blk Carb-Char-Gry-Drab Grn-Aqua Fissil Ls Wht-Lt Tan Microxln-Fxln Dns Micrite (w/Pyr Includ) Grad Poor Ixln Pin-Pt Por Barren No Odor No Stn No Flor NS

Sh Char-Gry-Drab Grn-Aqua-Blk Carb Fissil Ls Wht-Lt Tan Microxln-Fxln Dns Micrite Grad Poor Ixln Pin-Pt Por Barren Fos (Fuss) No Odor No Stn No Flor NS

Sh Blk Carb-Char-Gry-Drab Grn-Aqua Fissil Ls Wht-Lt Tan Microxln-Fxln Dns Micrite Grad Poor Ixln Pin-Pt Por Barren Cht Wht-Gry Op Shp Vit No Odor No Stn No Flor NS

Scale Change
TG C1C5 300

~ ~ DST # 1 ~ ~
 5060'-5120'. Times:
 30"- 60"- 60"- 90";
 Blow: IF=Strong/
 BOB/15 Sec. & GTS
 @ 8" (See Gauge
 Report). Strong No
 Blow Back During
 ISIP.
 FF= Strong Blow
 BOB/Instant. No
 Blow Back During
 FSIP.

Recovery:4552' GIIP: 505' TF:
 72' GOCM (10% G; 2% O; 88%
 M); 248' GWOCM (10% G; 30%
 O; 12% W; 48% M); 185'
 GOWCM (15% G; 15% O; 20%
 W; 50% M).

SH GAS
KICK= 100
UNITS.

Pressures:C5 300
 IH= 2612#;
 FH= 2452#;
 IF = 159-132;
 FF = 142-160#;
 ISIP = 1088#;
 FSIP = 1134#
 T.= 119 degrees. F.
 WTR= 126,000 Ppm Chl
 RW= .06 @ 78 degrees F.

Gas Gauge IF=
 @ 10" = 151.9 Mcf;;
 @ 20" = 231.7 Mcf;
 @ 30" = 208.9 Mcf;

Gas Gauge FF=
 @ 10" = 197.5 Mcf;
 @ 20" = 186.1 Mcf;
 @ 30" = 174.7 Mcf;
 @ 40" = 157.6 Mcf;
 @ 50" = 151.9 Mcf;
 @ 60" = 151.9 Mcf;

ROP (min/ft)
Calm (API) 10 150

@ 5020'
SHORT TRIP

MISSISSIPPIAN 5062' (- 2821)

Ls Wht-Lt Tan Microxl-n-Fxl n Micritic Grad Poor-Fair Pin-Pt Ixln Por (w/? SG) Cht Op Shp Vit Chalky Sh Char-Gry Fissil ? V Faint Odor Sli Flor No Stn ? SG
 Ls Wht-Lt Tan Microxl-n-Fxl n Micritic Grad Poor Pin-Pt Ixln Por Cht Op Shp Vit Chalky Sh Char-Gry Fissil ? No Odor ? Sli Flor No Stn ? NS
 Ls Wht-Lt Tan Microxl-n-Fxl n Micritic Grad Poor-Fair Pin-Pt Ixln Por (w/? SG) Cht Op Shp Vit Fos (Crin) Chalky Sh Char-Gry Fissil ? V Faint Odor Sli Flor No Stn ? SG

30" CFS @ 5110' Ls Wht-Lt Tan Microxl-n-Fxl n Micritic Grad Poor-Fair Pin-Pt Ixln Por (w/? SG & VSSFO-Lt Brn & Does Flor (Lt Grn)) Grad Poor OOM Por Poor InterOOM Por Poor Leaching Poor Develop Cht Wht Op Shp Vit Fos (Brach) Chalky Sh Char-Gry Fissil Faint Odor Poor Flor Sli Brn Stn ? SG & SSO

60" CFS @ 5110' Ls/Dolo Wht-Lt Tan-Tan Fxl n Micritic Grad Poor-Fair Pin-Pt Ixln Por (w/SG & SFO-Lt Brn & Does Flor (Lt Grn)) Grad Poor OOM/OOL Por Poor InterOOM/OOL Por Poor-Fair Leaching Poor-Fair Develop Cht Wht Op Shp Vit Fos (Brach) Chalky Sh Char-Gry-Aqua-Olive Fissil Good-Strong Odor Med-Good Flor Sli Brn Stn SG & SO

75" CFS @ 5110' Dolo/Ls Wht-Lt Tan-Tan Fxl n Micritic Grad M-G Pin-Pt Ixln Por (w/GSG & GSFO-Lt Brn Droplets (When Pressed On Under Heat in Wtr) & Both Gas & Oil Do Flor (Lt Grn)) Chalky Sh Char-Gry-Aqua-Olive Fissil G -Strg Odor M-G Flor G-Brn Stn (4 Pcs) GSG & GSO

60" CFS @ 5120' Dolo/Ls Wht-Lt Tan-Tan Fxl n Micritic Grad M-G Pin-Pt Ixln Por (w/Tr Glacu Inklus & GSG & GSFO) Cht Amber-Wht Trip (w/Tr Gillsonitic Stn Drk Blk Stn) Op Shp Vit Chalky Sh Char-Gry-Aqua Fissil G-Strg Odor M-G Flor G-Brn Stn GSG & GSO

75" CFS @ 5120' Dolo/Ls Wht-Lt Tan-Tan Fxl n AA (w/Tr Glacu Inklus) Cht Amber-Wht Trip (w/Tr Gillsonitic Stn Drk Blk Stn) Op Shp Vit Chalky Sh Char-Gry-Aqua Fissil Good ? Dec Odor M-G Flor G-Brn Stn M-GSG & M-GSO

MISS. WARSAW 5126' (- 2885)

60" CFS @ 5135' Dolo Tan-Wht Fxl n Poor Pin-Pt Ixln Por (w/Scatt (Lt Grn) Flor w/SSO Under Heat in Wtr) Ls AA Cht AA (Tr Only) Sh AA ? Faint Odor Sli Flor Sli Lt Brn Stn VSSO

75" CFS @ 5135' Dolo Tan-Wht Fxl n Poor Pin-Pt Ixln Por (w/Scatt (Lt Grn) Flor w/SSO Under Heat in Wtr) Ls AA Cht AA (Tr Only) Sh AA ? Faint Odor Sli Flor Sli Lt Brn Stn VSSO

Dolo/Ls Tan-Wht-Lt Tan Fxl n Poor Pin-Pt Ixln Por (w/Tr Glacu Inklus & Gillsonitic Stn Drk Blk Stn AA) Grad Dns Micritic Chalky Pyr Mass Sh Char-Gry-Aqua Fissil ? V Faint Odor Poor Flor Dec Tr ? Brn Stn ? VSSO to NS

Dolo Tan-Wht-Lt Tan Fxl n Poor Pin-Pt Ixln Por (w/Tr Glacu Inklus & Gillsonitic Stn Drk Blk Stn AA) Grad Dns Micritic Chalky Pyr Mass Sh Char -Gry -Aqua Fissil No Odor No Flor No Stn NS

Dolo Tan-Wht-Lt Tan Fxl n Poor Pin-Pt Ixln Por (w/Tr Glacu Inklus & Gillsonitic Stn Drk Blk Stn AA) Grad Dns Micritic Chalky Pyr Mass Sh Char -Gry -Aqua Fissil No Odor No Flor No Stn NS

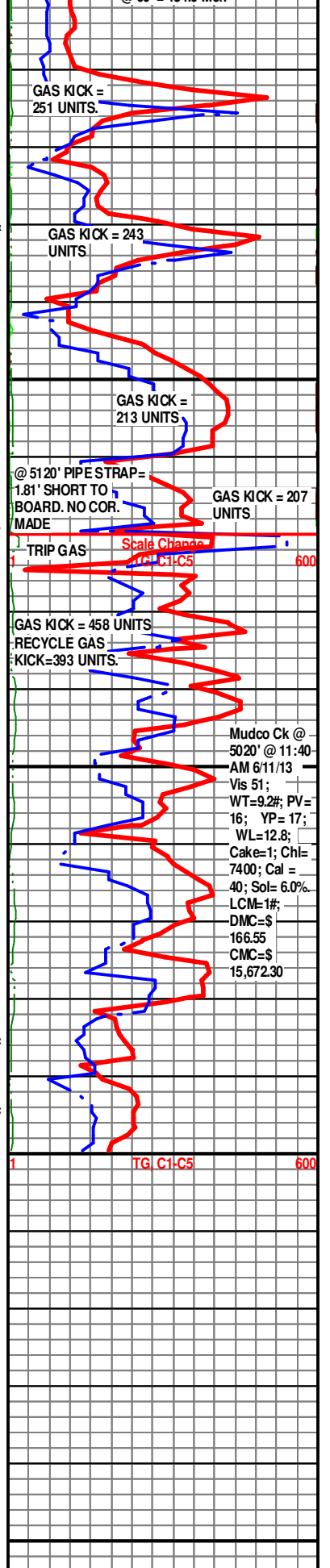
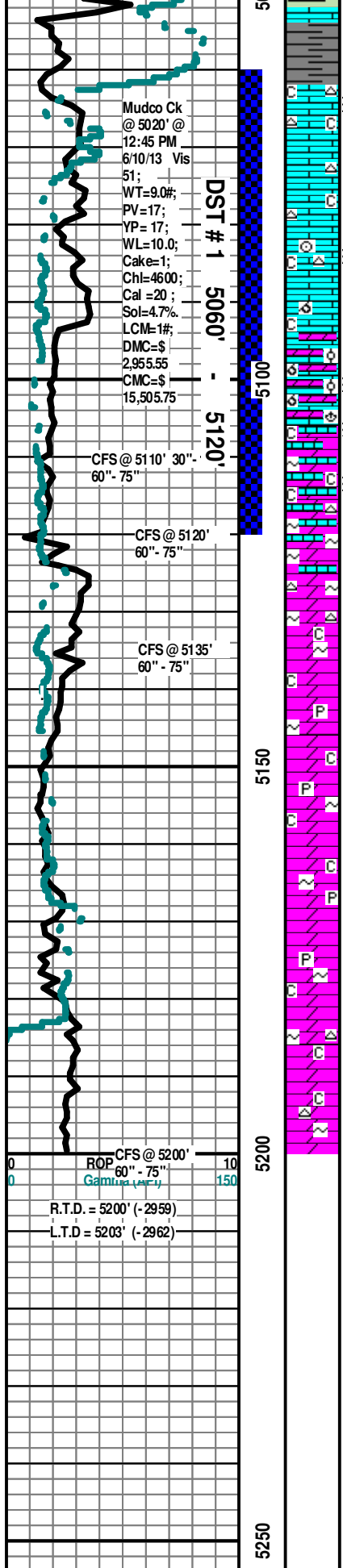
Dolo Tan-Wht-Lt Tan Fxl n Poor Pin-Pt Ixln Por (w/Tr Glacu Inklus & Gillsonitic Stn Drk Blk Stn AA) Grad Dns Micritic Chalky Pyr Mass Sh Char -Gry -Aqua Fissil No Odor No Flor No Stn NS

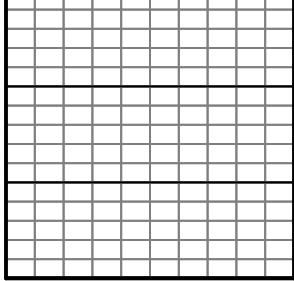
60" CFS @ 5200' Dolo Tan-Wht-Lt Tan Fxl n Poor Pin-Pt Ixln Por (w/Tr Glacu Inklus & Gillsonitic Stn Drk Blk Stn AA) Grad Dns Micritic Cht Wht Op Shp Vit Chalky Sh Char-Gry-Aqua Fissil No Odor No Flor No Stn NS

75" CFS @ 5200' Dolo Tan-Wht-Lt Tan Fxl n Poor Pin-Pt Ixln Por (w/Tr Glacu Inklus & Gillsonitic Stn Drk Blk Stn AA) Grad Dns Micritic Cht Wht Op Shp Vit Chalky Sh Char-Gry-Aqua Fissil No Odor No Flor No Stn NS

Electric Logs Run: By Pioneer Logging: Dual Induction; Compensated Density-Neutron; & Microresistivity Logs.

Geologist Left Location at: 8:00 AM on 06/12/2013





00

