

KEVIN L. KESSLER
CONSULTING PETROLEUM GEOLOGIST
(316) 522-7338

OPERATOR : MULL DRILLING COMPANY, INC.
LEASE : THORNBURG 'B' WELL # : 2 - 4
LOCATION : 660' FNL & 2294' FWL
SEC: 04 TWP : 16 S RGE : 26 W
COUNTY : NESS STATE : KANSAS

ELEVATION
KB : 2609
GL : 2604
MEASUREMENTS FROM
KB

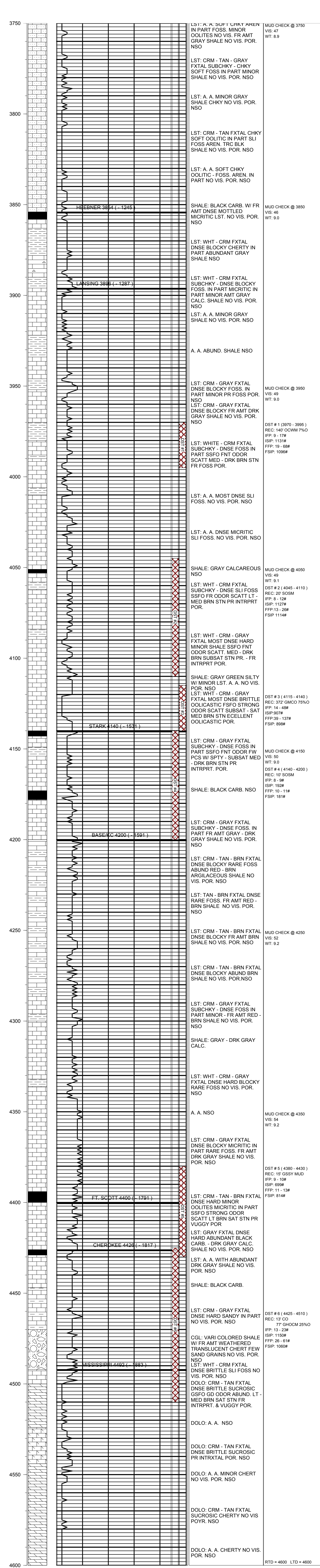
CONTRACTOR : WW DRILLING RIG # 10
COMM : 05 / 02 / 2013 COMP : 05 / 12 / 2013
RTD : 4600 LOG TD : 4600
SAMPLES SAVED FROM : 3750 TO: RTD
GEOLOGICAL SUPERVISION FROM : 3750 TO : RTD
MUD UP : 3600 TYPE MUD : CHEMICAL

CASING RECORD
SURFACE :
8 5/8" @ 220'
PRODUCTION :
5 1/2" @ 4600'

FORMATION	TOP	LOG	DATUM	TOP	SAMPLE	DATUM	STRUCT. COMP.
HEEBNER	3854		- 1245	3854		- 1245	+ 06
LANSING	3896		- 1287	3896		- 1287	+ 07
STARK	4140		- 1531	4140		- 1531	+ 08
BASE/ KC	4200		- 1591	4200		- 1591	+ 03
FORT SCOTT	4400		- 1791	4400		- 1791	+ 09
CHEROKEE	4426		- 1817	4426		- 1817	+ 09
MISSISSIPPI	4492		- 1883	4492		- 1883	FLAT

ELECTRICAL SURVEYS:
CDL/CNL
DIL
MICRO
SONIC

REFERENCE WELL FOR STRUCTURAL COMPARISON :
KANSAS OIL CORP. # 1 THORNBURG 'F' SEC 04 - T 16 S - R 26 W NESS COUNTY KANSAS



COMMENTS:

**PRODUCTION CASING WAS SET TO FURTHER
EVALUATE THE POTENTIAL PRODUCTIVITY OF THIS WELL**

KEVIN L. KESSLER