



TRILOBITE TESTING, INC.

DRILL STEM TEST REPORT

Forestar Petroleum Corp
 1801 Broadway #900
 Denver Co 80202
 ATTN: Jeff Lawler

22-17-29 Lane Co KS

John Allen 1-22

Job Ticket: 50189

DST#: 1

Test Start: 2013.04.24 @ 19:37:15

GENERAL INFORMATION:

Formation: **LKC H-K**
 Deviated: No Whipstock: ft (KB)
 Time Tool Opened: 21:25:00
 Time Test Ended: 02:44:30
 Interval: **4136.00 ft (KB) To 4277.00 ft (KB) (TVD)**
 Total Depth: 4277.00 ft (KB) (TVD)
 Hole Diameter: 7.88 inches Hole Condition: Fair
 Test Type: Conventional Bottom Hole (Initial)
 Tester: Mike Roberts
 Unit No: 65
 Reference Elevations: 2806.00 ft (KB)
 2801.00 ft (CF)
 KB to GR/CF: 5.00 ft

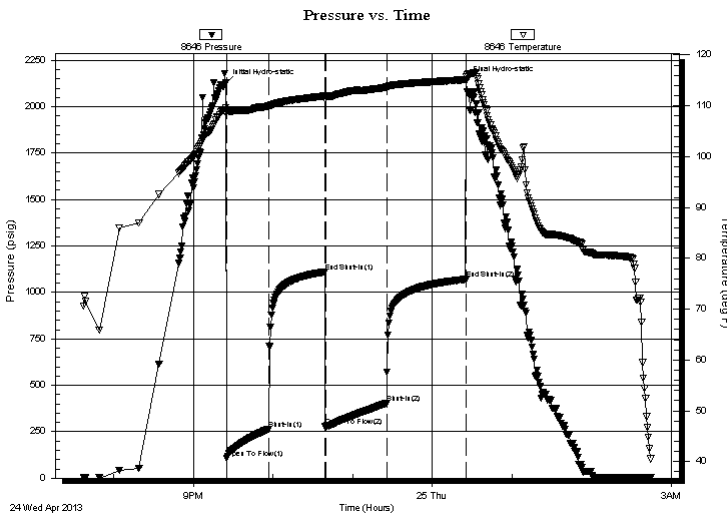
Serial #: 8646

Inside

Press @ Run Depth: 403.27 psig @ 4137.00 ft (KB)
 Start Date: 2013.04.24 End Date: 2013.04.25
 Start Time: 19:37:15 End Time: 02:44:30
 Capacity: 8000.00 psig
 Last Calib.: 2013.04.25
 Time On Btm: 2013.04.24 @ 21:24:30
 Time Off Btm: 2013.04.25 @ 00:25:45

TEST COMMENT: IF:BOB in 5 min.
 IS:Return blow built to 1"
 FF:BOB in 9 min.
 FS:No return blow

PRESSURE SUMMARY



Time (Min.)	Pressure (psig)	Temp (deg F)	Annotation
0	2125.00	109.63	Initial Hydro-static
1	105.93	109.04	Open To Flow (1)
32	265.21	109.89	Shut-In(1)
75	1109.85	111.92	End Shut-In(1)
76	277.98	111.75	Open To Flow (2)
121	403.27	113.68	Shut-In(2)
181	1070.35	115.12	End Shut-In(2)
182	2141.13	115.66	Final Hydro-static

Recovery

Length (ft)	Description	Volume (bbl)
124.00	mcw 50% m 50% w	0.61
186.00	gcom 15% g 25% o 60% m	2.61
124.00	gcom 10% g 30% o 60% m	1.74
124.00	gcmo 20% g 30% m 50% o	1.74
124.00	free oil 100% o	1.74

Gas Rates

Choke (inches)	Pressure (psig)	Gas Rate (Mcf/d)



**TRILOBITE
TESTING, INC.**

DRILL STEM TEST REPORT

FLUID SUMMARY

Forestar Petroleum Corp

22-17-29 Lane Co KS

1801 Broadway #900
Denver Co 80202

John Allen 1-22

Job Ticket: 50189

DST#: 1

ATTN: Jeff Lawler

Test Start: 2013.04.24 @ 19:37:15

Mud and Cushion Information

Mud Type: Gel Chem

Cushion Type:

Oil API:

deg API

Mud Weight: 9.00 lb/gal

Cushion Length:

ft

Water Salinity:

ppm

Viscosity: 60.00 sec/qt

Cushion Volume:

bbbl

Water Loss: 5.58 in³

Gas Cushion Type:

Resistivity: 0.00 ohm.m

Gas Cushion Pressure:

psig

Salinity: 1400.00 ppm

Filter Cake: 1.00 inches

Recovery Information

Recovery Table

Length ft	Description	Volume bbbl
124.00	mcw 50%m 50%w	0.610
186.00	gcom 15%g 25%o 60%m	2.609
124.00	gcom 10%g 30%o 60%m	1.739
124.00	gcmo 20%g 30%m 50%o	1.739
124.00	free oil 100%o	1.739

Total Length: 682.00 ft

Total Volume: 8.436 bbl

Num Fluid Samples: 0

Num Gas Bombs: 0

Serial #:

Laboratory Name:

Laboratory Location:

Recovery Comments:

Pressure vs. Time

