



TRILOBITE TESTING, INC.

DRILL STEM TEST REPORT

Forestar Petroleum Corp
 1801 Broadway #900
 Denver Co 80202
 ATTN: Jeff Lawler

22-17-29 Lane Co KS

John Alan 1-22

Job Ticket: 50190

DST#: 2

Test Start: 2013.04.25 @ 16:30:15

GENERAL INFORMATION:

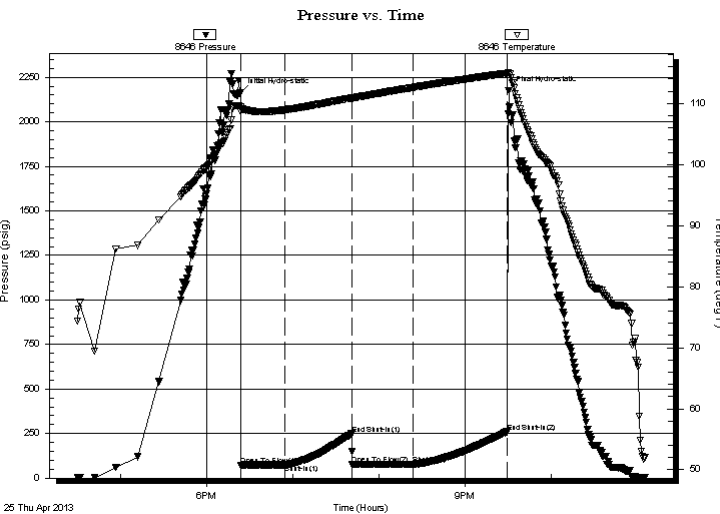
Formation: **L**
 Deviated: **No Whipstock:** ft (KB)
 Time Tool Opened: 18:24:00
 Time Test Ended: 23:05:45
Interval: 4276.00 ft (KB) To 4387.00 ft (KB) (TVD)
 Total Depth: 4387.00 ft (KB) (TVD)
 Hole Diameter: 7.88 inches Hole Condition: Fair
 Test Type: Conventional Bottom Hole (Reset)
 Tester: Mike Roberts
 Unit No: 65
 Reference Elevations: 2806.00 ft (KB)
 2801.00 ft (CF)
 KB to GR/CF: 5.00 ft

Serial #: 8646

Inside

Press @ Run Depth: 76.96 psig @ 4277.00 ft (KB) Capacity: 8000.00 psig
 Start Date: 2013.04.25 End Date: 2013.04.25 Last Calib.: 2013.04.25
 Start Time: 16:30:15 End Time: 23:05:45 Time On Btm: 2013.04.25 @ 18:23:45
 Time Off Btm: 2013.04.25 @ 21:30:30

TEST COMMENT: IF: Built to 1/4"
 IS: No return blow
 FF: No blow
 FS: No return blow



PRESSURE SUMMARY

Time (Min.)	Pressure (psig)	Temp (deg F)	Annotation
0	2165.45	109.40	Initial Hydro-static
1	73.24	108.65	Open To Flow (1)
31	74.89	108.93	Shut-In(1)
78	248.43	110.89	End Shut-In(1)
78	76.11	110.86	Open To Flow (2)
121	76.96	112.62	Shut-In(2)
186	259.52	114.94	End Shut-In(2)
187	2173.50	114.89	Final Hydro-static

Recovery

Length (ft)	Description	Volume (bbl)
5.00	mud 100% m	0.02

* Recovery from multiple tests

Gas Rates

Choke (inches)	Pressure (psig)	Gas Rate (Mcf/d)



**TRILOBITE
TESTING, INC.**

DRILL STEM TEST REPORT

FLUID SUMMARY

Forestar Petroleum Corp
1801 Broadway #900
Denver Co
80202
ATTN: Jeff Lawler

22-17-29 Lane Co KS
John Alan 1-22
Job Ticket: 50190 **DST#: 2**
Test Start: 2013.04.25 @ 16:30:15

Mud and Cushion Information

Mud Type: Gel Chem	Cushion Type:	Oil API:	0 deg API
Mud Weight: 9.00 lb/gal	Cushion Length: ft	Water Salinity:	0 ppm
Viscosity: 58.00 sec/qt	Cushion Volume: bbl		
Water Loss: 5.19 in ³	Gas Cushion Type:		
Resistivity: 0.00 ohm.m	Gas Cushion Pressure: psig		
Salinity: 1900.00 ppm			
Filter Cake: 1.00 inches			

Recovery Information

Recovery Table

Length ft	Description	Volume bbl
5.00	mud 100% m	0.025

Total Length: 5.00 ft Total Volume: 0.025 bbl

Num Fluid Samples: 0 Num Gas Bombs: 0 Serial #:

Laboratory Name: Laboratory Location:

Recovery Comments:

Pressure vs. Time

