



**Woolsey Operating Company, LLC**

Scale 1:240 (5"=100') Imperial

Measured Depth Log

Well Name: Michel #2 H

Location: Section 7 - Township 34 South - Range 11 West

License Number: 15-007-24014-01-00

Region: Barber County, KS

Spud Date:

Drilling Completed:

Surface Coordinates:

2170' FNL & 620' FWL

Apx. NE SW SW NW

Bottom Hole Coordinates:

Ground Elevation (ft): 1496'

K.B. Elevation (ft): 1479'

Logged Interval (ft): 3600'

To:

Total Depth (ft):

Formation: Heebner >>> Mississippi

Type of Drilling Fluid: Chemical Mud

Printed by MUD.LOG from WellSight Systems 1-800-447-1534 [www.WellSight.com](http://www.WellSight.com)

**OPERATOR**

Company: Woolsey Operating Company, LLC

Address: 125 N. Market, Suite 1000

Wichita, KS 67202

**GEOLOGIST**

Name: Bill Klaver

Company: Woolsey Operating Co. LLC

Address: 125 N. Market, Wichita Kansas, 67202

### Casing/Bits

Big Bucket's set 20" X 53#/ft conductor to 41' with 4 yards of grout on April 17, 2013.  
Ran 8 joints of new 13 3/8" X 54.5#/ft casing to 336' KB (tally 336') with 330 sx Class A, 2% gel, 3% cc. Plud down 3 am on 4/24/2013. Cement did circulate.

Bit Record: 1) 17 1/2" Sec. RRRT out at 340', 2) 12 1/4" JZ RR RT out at 800', 3) 8 3/4" Reed R-23-A out at 4023', 4) 8 3/4" Reed R-25-APDH out at





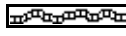

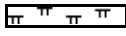

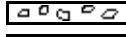



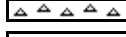








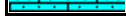

### Remarks:

Gas Detector: Woolsey Operating Company, Gas Trailer #2  
Mud Systems: Mud-Co. Brad Bortz, Terry Ibson, Engineers  
Directional Input: Calmena Energy Services, Heath Marshal, Mark Sanders Directional Drillers  
MWD Hands: Shane Lewis, David Jay

### Crews:

Tool Pushers: Steve Ellington, Rellief: Sammy Fry  
Daytime Drillers: Jack Lambert, Johnnie Stone  
Night Drillers: Tanner Barber, Terry Stark

### ROCK TYPES

	Anhy		Congl		Lmst		Black sh
	Bent		Sdy dolo		Mrlst		Gry sh
	Brec		Shy dolo		Salt		Shale
	Cht		Dol		Shale		Shysltst
	Clyst		Gyp		Sltst		Sltsh
	Coal		Sdy lmst		Ss		

### ACCESSORIES

#### MINERAL

- Anhy
- Arg
- Bent
- Bit
- Brecfrag
- Calc
- Carb
- Chtdk
- Chtlt
- Dol
- Ferrpel
- Ferr
- Glau
- Gyp
- Marl
- Nodule
- Phos
- Pyr
- Salt
- Sandy
- Silt

- Chlorite
- Dol
- Sand
- Slty

#### FOSSIL

- Algae
- Amph
- Belm
- Bioclst
- Brach
- Bryozoa
- Cephal
- Coral
- Crin
- Echin
- Fish
- Foram
- Fossil
- Gastro
- Oolite
- Ostra

- Pelec
- Pellet
- Pisolite
- Plant
- Strom
- Fuss
- Oomoldic

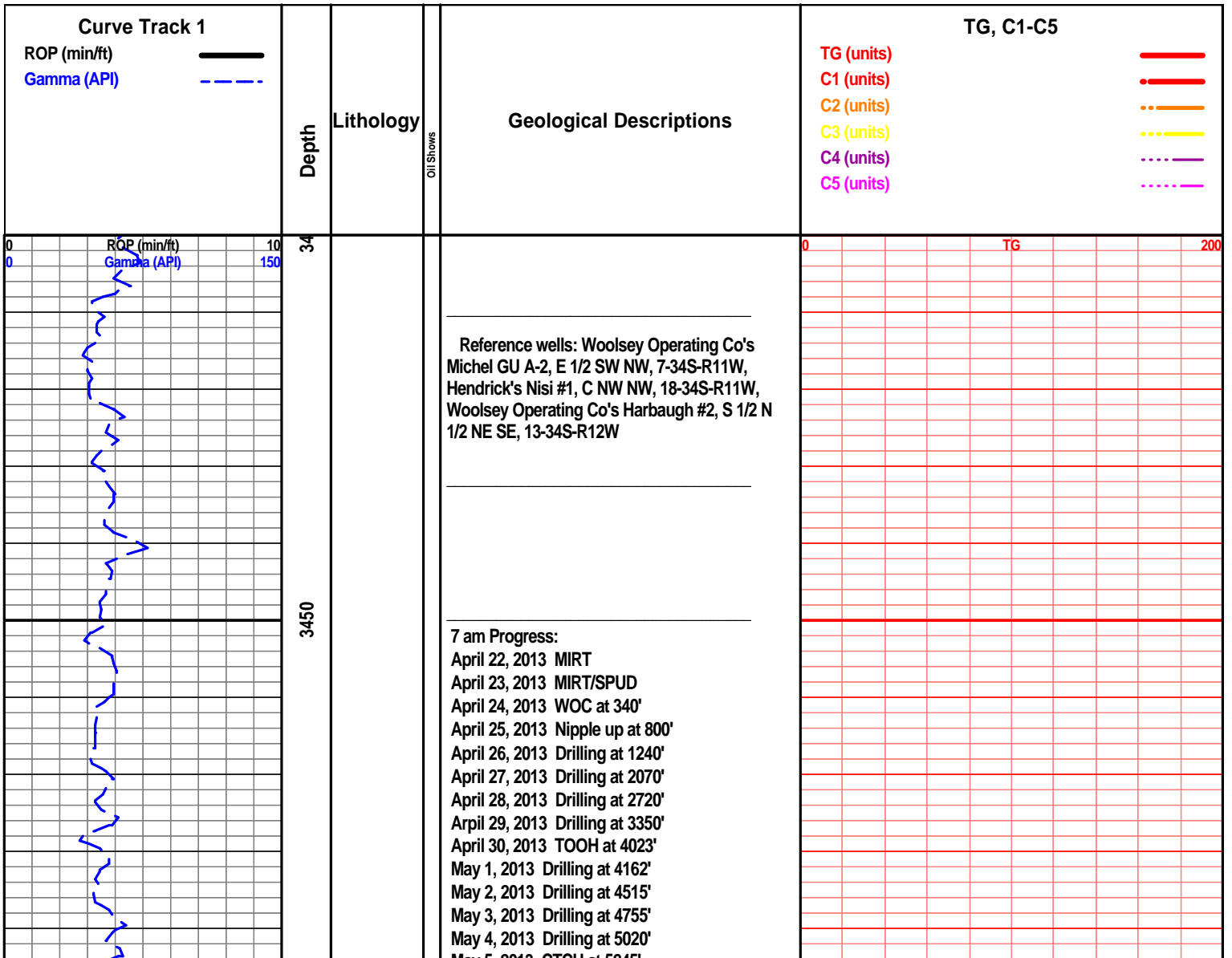
#### STRINGER

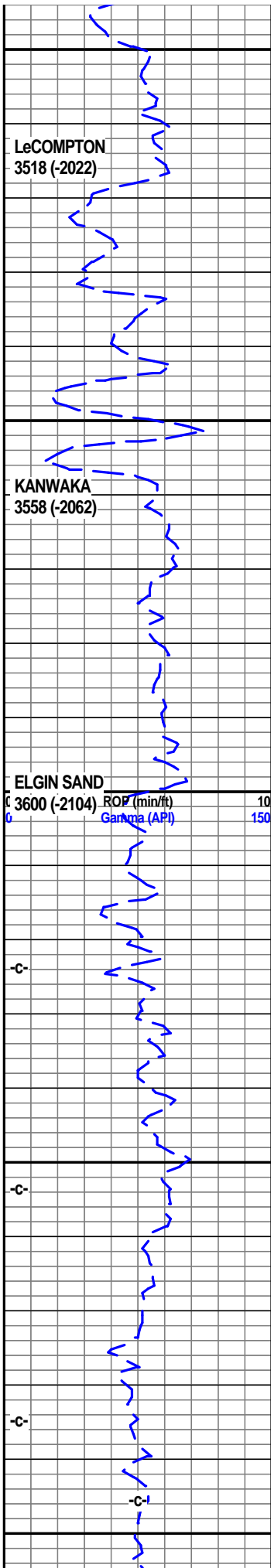
- Anhy
- Arg
- Bent
- Coal
- Dol
- Gyp
- Ls
- Mrst
- Slststrg
- Ssstrg
- Carbsh
- Clystn
- Dol

- Grysh
- Gryslt
- Lms
- Sandylms
- Sh
- Slstn

#### TEXTURE

- Boundst
- Chalky
- Cryxln
- Earthy
- Finexln
- Grainst
- Lithogr
- Microxln
- Mudst
- Packst
- Wackest





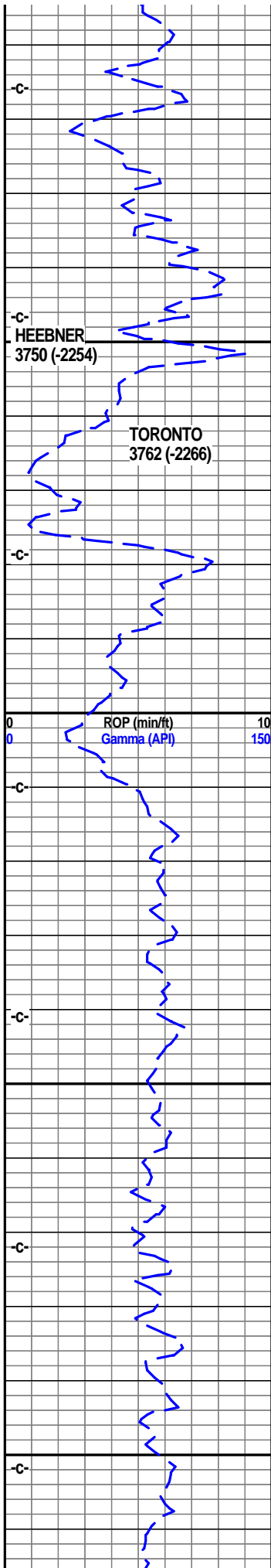
0.6 deg @ 324.1 az

0.6 deg @ 314.8 az

Sample Tops:

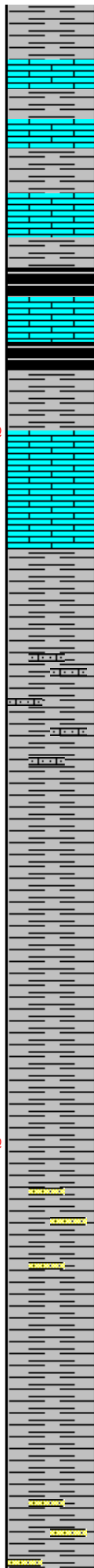
- LeCompton 3518 (-2022)
- Kanwaka 3558 (-2062)
- Heebner 3750 (-2254)
- Toronto 3762 (-2266)
- Douglas Shl 3810 (-2314)
- Brown Lime 3952 (-2456)
- Stark 4422 (-2926)
- Hushpuckney 4453 (-2957)
- B/Kansas City 4503 (-3007)
- Pawnee 4592 (-3096)
- Cherokee Grp 4642 (-3146)
- Mississippi 4654 (-3159)

0 TG 200

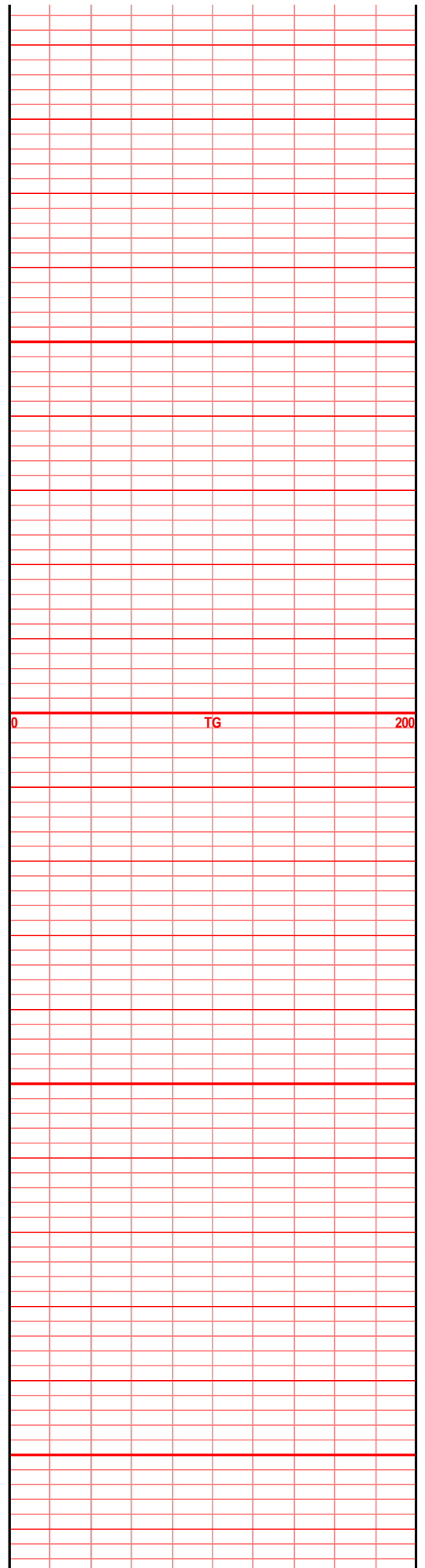


0.7  
deg @  
327.3  
az

0.8  
deg @  
336.9  
az



shl gry med drk gry gritty silty sndy, snd grn  
inclu, mic in some, sst lt gry f grnd, sub ang  
grns, sub ang, prly srted, prly cem, clay fill



shl gr med gry silty gritty sndy in prt, sst lt gry f  
grnd sub ang, prly cem, prly srted, calc cem, arg,  
clay fill, mic in pr,

shl gry med gry silty gritty, sndy in prt, sub ang  
snd grm inclu, tr sst aa

lst tan brn f xln blkly ang hrd dns, tr micro xln,  
some arg, lst tan wht off wht crm f xln blkly ang  
sub chky calc xln fill

lst off wht crm lt gry in prt, f sli med xln gran,  
blkly flky pcs, sub chky, foss frags, inter xln,  
foss mold por, oomold por, much calc xln fill

lst crm buff tan off wht f sli med xln in prt, blkly  
ang flky pcs, foss frags, sub chky calc xln fill,  
foss mold inter xln por

lst crm buff tan off wht f xln blkly flky sub chky,  
foss frags, mstly dns, tr calc xln fill, spls wsh  
wht

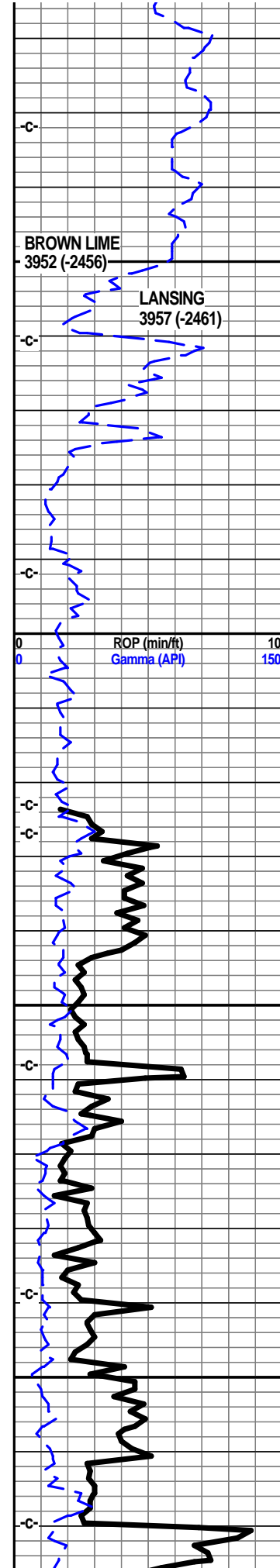
lst wht off wht crm f sli med xln gran sub chky,  
dns, foss frags, foss ool, calc xln fill

lst crm gry tan f slli med sln gran sub chky foss  
frags, foss ool, soft, some arg, calc xln fill

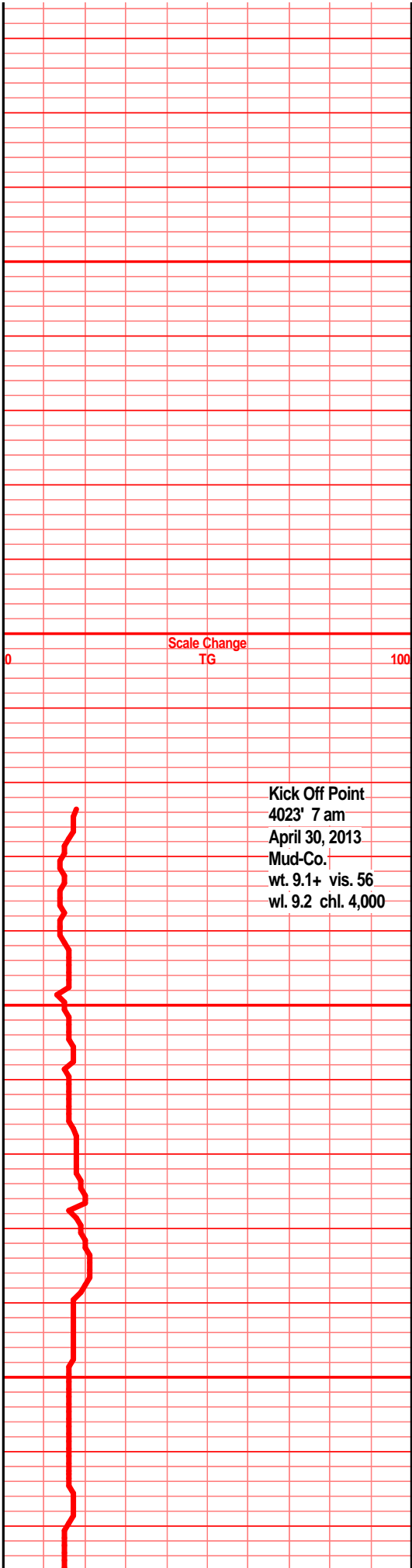
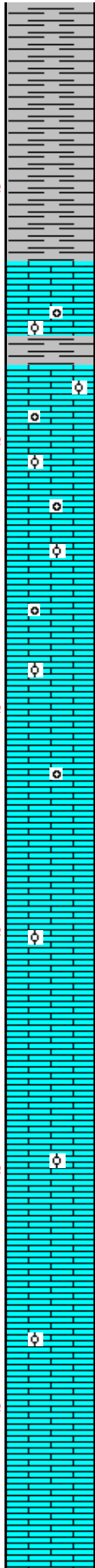
lst crm tan lt gry f sli med xln blkly soft gran pcs,  
sub chky foss frags, foss ool, inter xln por, foss  
mold por,

lst crm tan off wht lf gry f sli med xln, gran soft  
sub chky pcs, foss frags, foss ool, inter xln por,  
foss mold por calc xln fill

lst crm tan lt gry f xln dns gran soft sub clky pcs,  
foss frags, foss ool, calc xln fill, foss mold por,

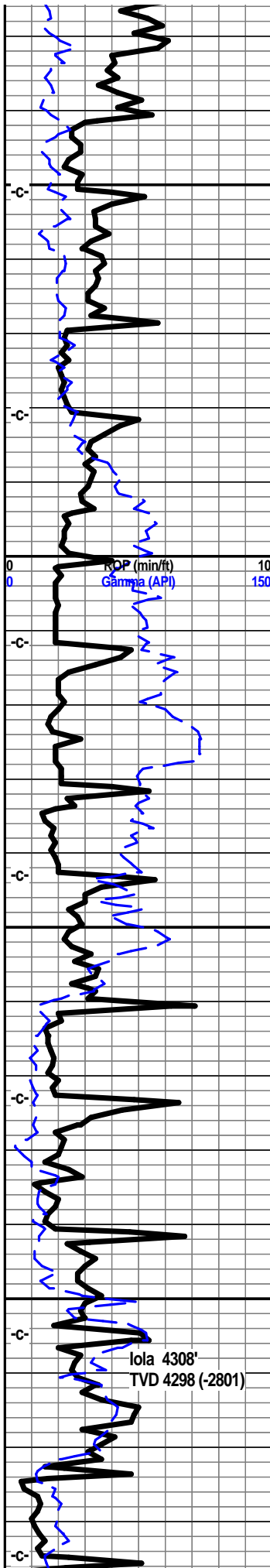


0.5 deg @ 232.7 az  
3950  
0.5 deg @ 316.9 az  
4000  
0.3 deg @ 265.4 az  
4050  
1.7 deg @ 178.0 az  
4.0 deg @ 169.9 az  
100  
6.8 r deg @ 165.7 az

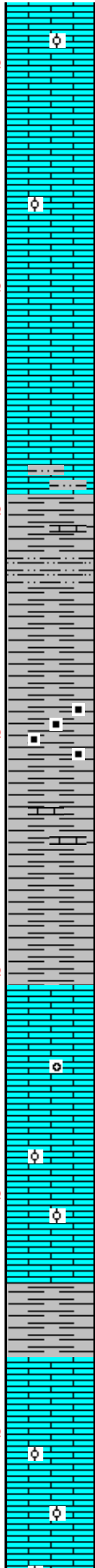


Scale Change  
TG

Kick Off Point  
4023' 7 am  
April 30, 2013  
Mud-Co.  
wt. 9.1+ vis. 56  
wl. 9.2 chl. 4,000



9.9 deg @ 164.7 az  
 13.1 deg @ 163.1 az  
 16.2 deg @ 161.5 az  
 19.2 deg @ 159.2 az  
 22.4 deg @ 153.7 az  
 25.2 deg @ 154.8 az  
 28.1 deg @ 153.8 az



inter xln por

lst crm tan lt gry f some vfixln, blk ang sub chlky, foss frags, foss ool, inter xln moldic por, tr chrt wht opa

lst tan crm lt gry, f vf xln dns hrd blk sub chlky foss frags, foss ool, chrt wht shrp frsh opa

lst crm tan gry, bec drkr gry, f vf xln dns blk ang hrd pcs, some sub chlky, foss frags, mstly hrd dns

shl drk gry, gry blk in prt, silty gritty, calc in prt, platy, tr blk carb text

shl gry drk gry, some drk gry blk, tr blk carb text, silty gritty calc in prt

shl gry, drk gry blk, silty gritty, calc, tr blk carb text in some

lst wht buff lt tan, mstly wht f xln gran soft, sub chlky, calc xstls, calc xln fill, foss frags, crumbly, spls wsh wht

lst wht off wht, tan, f sli med xln gran soft crumbly, foss frags, tr foss ool, calc xln fill, rhom calc xstls, spls wsh wht, tr wht shrp frsh opa chrt

lst wht off wht crm f sl med xln, gran soft, chlky to sub chlky, calc xln fill, foss frags, foss ool, inter xln por, foss mold por

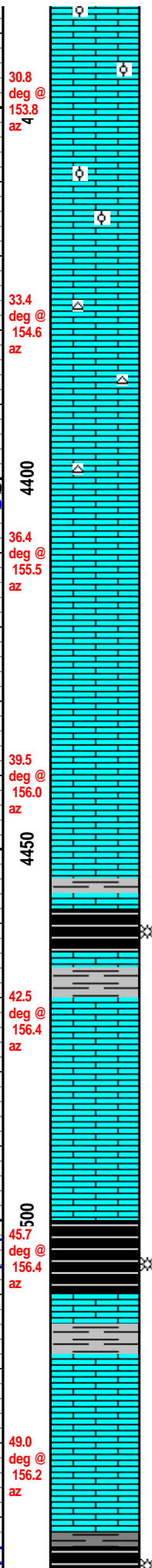
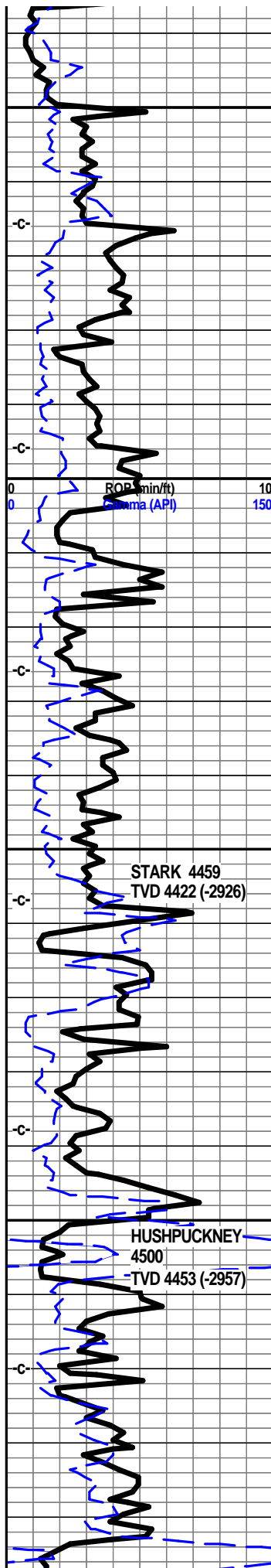
lst wht tan off wht f sli med xln gran soft crumbly, sub chlky, foss frags foss ool, inter xln por, foss mold por, calc xln fill, tr chrt wht lt gry shrp frsh opa

4162' 7 am  
 May 1, 2013

Mud-Co. 4202'  
 wt. 9.0+ vis. 51  
 wl. 8.8 chl. 3,000

TG

100



Ist wht off wht tr crm/tan f sli med xln gran soft, crumbly, sub chlky, calc xln fill, xstls, foss frags, foss ool, inter xln por, foss mold por, chrt lt gry shrp frsh opaq, samples wsh wht

Ist wht off wht lt gry f sli med xln gran crumbly, sub chlky foss frags, foss ool, iter xln, foss mold por, calc xln fill, mstly soft gran spls wsh wht

Ist wht off wht tan lt gry in prt, f xli med xln, blk ang soft crumbly sub chlky pcs, calc xln fill inter xln foss mold por, foss frags, tr chrt lt gry shrp frsh opaq

Ist crm wht tan lt gry/brn f xln dns hrd blk ang sub chlky, foss frags, tr foss ool, tr calc xln fill, incr tan brn drk dns hrd calc

Ist crm buff tan, off wht, f sli med xln blk ang gran sub chlky foss frags, tr foss ool, tr chrt lt gry wht shrp frsh opaq

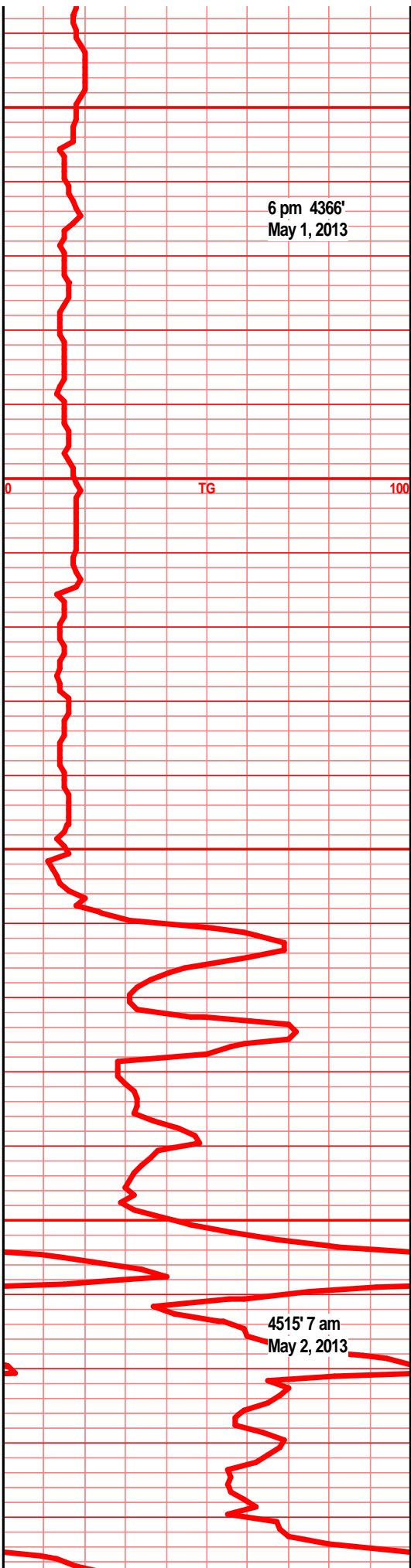
shl gry blk, flood blk carb, wxy grsy, tr gas bubs,

Ist crm buff lt tan off wht f sli med xln, blk ang flky pcs, sub chlky, foss frags, tr foss ool, tr some chlky soapy gas bubs, spls wsh wht,

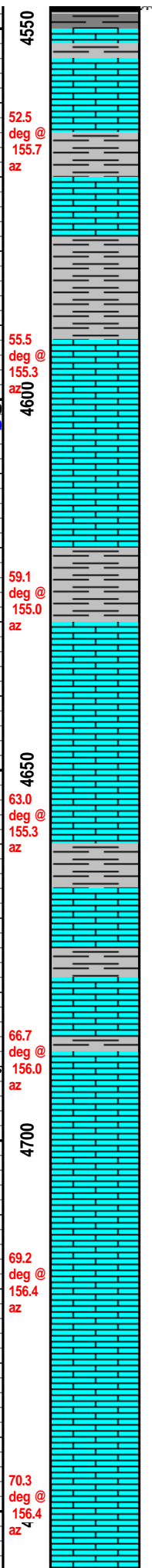
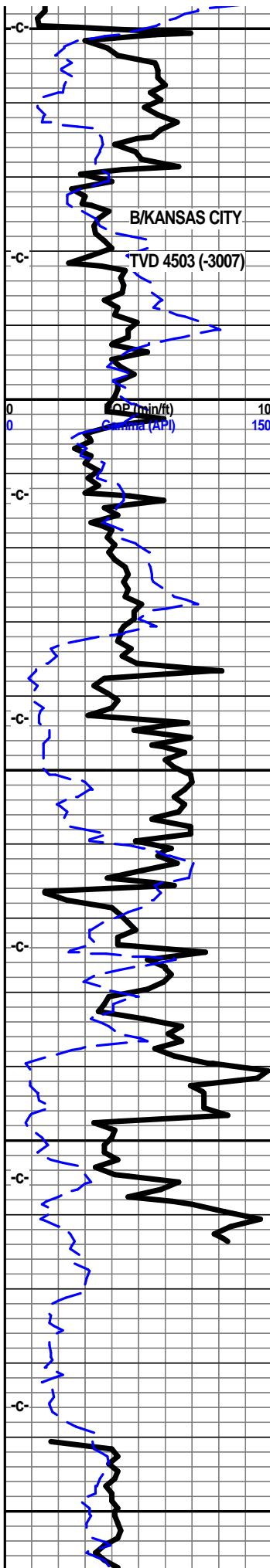
Ist crm tan off wht f sli med xln gran flky sub chlky foss frags, tr foss ool, micro foss in prt,

shl gry drk gry, flood blk carb, wxy grsy, some abun gas, Ist tan crm brn f vf xln dns hrd blk ang some micro foss, micro xln fill

Ist gry tan lt brn f vf xln dns hrd blk ang calc xln fill, tr sub chlky, micro foss frags, tr chrt tan brn gry shrp frsh opaq







shl gry blk, drk gry blk, carb in prt, wxy grsy tr gassy, lst tan brn gry brn f vf xln dns hrd blk ang arg, calc xln fill, tr chrt dry gry brn shrp frsh opa

shl gry drk gry brn silty gritty calc, lst gry med gry brn f vf xln dns hrd blk ang arg, micro foss frags, tr chrt gry brn shrp frsh opa

lst tan gry brn f vf xln blk dns ang hrd pcs, tr arg, shls gry grn silty gritty calc in prt, shl gry green, blue/green

lst tan gry brn f vf xln dns hrd blk ang arg, silty, calc fill, micor foss frags, tr chrt gry brn, shls gry green, silty gritty, calc in prt

shls gry green blue green, slick silty, lst buff crm tan f vf xln blk fly ang sli sub chlky, micro foss frags, some calc xln fill

shl gry blk green/brn, lst tan crm buff f sli vf xln dns hrd blk ang fly sub chlky pcs, micro foss frags, tr inter xln por, mstly dns

lst crm tan buff f vf xln dns hrd fly, tr sub chlky, mstly dns, tr interxln por, tr micro foss frags, shl gry green silty gritty

lst crm buff tan f vf xln dns blk ang pcs, tr sub chlky, micor foss frags, tr calc xln fill,

lst crm buff tan f vf xln blk ang dns fly tr sub chlky pcs, micro foss frags, some calc xln fill,

lst crm buff tan f vf xln blk ang fly sub chlky pcs, micro foss frags, miro xln in prt, some calc xln fill

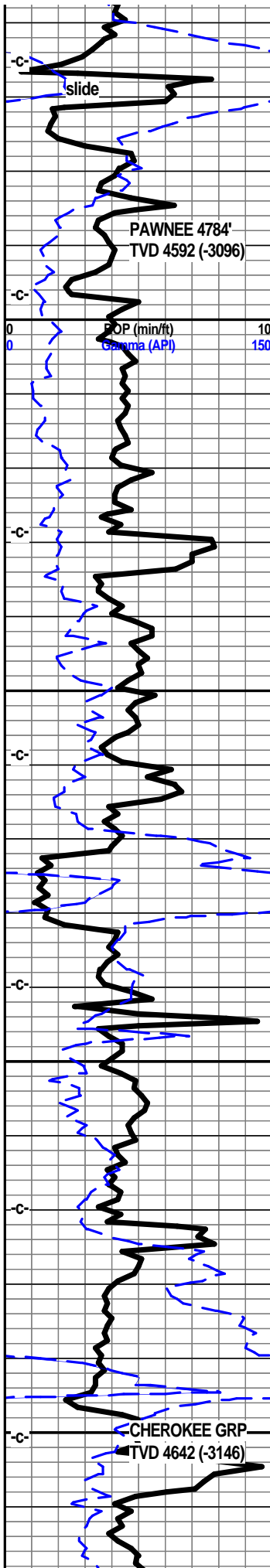
Mud-Co. 4541'  
wt. 9.0+ vis. 48  
wl. 8.8 chl. 2,000

4635' 6 pm  
May 2, 2013

Light plant down  
Pason Failure  
Tooke "Froze"  
Data Lost  
No good!

Calibration  
Check

4755' 6 am  
May 2 2013



71.6 deg @ 156.9 az

4800

72.3 deg @ 157.1 az

72.6 deg @ 156.7 az

4850

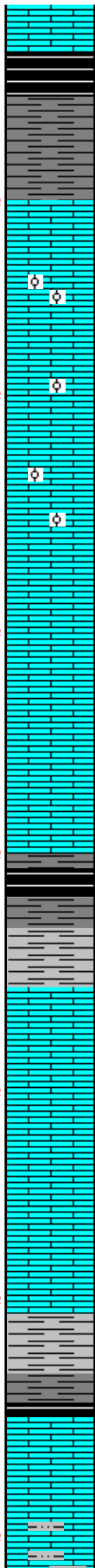
72.1 deg @ 156.4 az

72.1 deg @ 155.7 az

71.5 deg @ 155.2 az

4950

71.1 deg @ 155.3 az



lst aa, tan crm buff f vf xln dns hrd flky some sli sub chlky miro foss frags shls gry, drk gry, drk gry blk, blk and some blk carb text, tr gas bubs

lst crm buff lt tan f sli med xln, flky tr sub chlky, foss frags, foss ool, inter ool por with much calc xln fill, tr inter xln por, tr scatt rare gas bubs, tr filmy cond, better brkn

lst tan buff crm f vf xln flky sub chlky, micro foss frags, calc xln fill, foss frags tr foss ool,

lst crm buff tan f vf xln blk ang sub chlky pcs, micro foss frags, tr foss ool, calc xln fill,

lst crm buff tan f vf xln blk flky sub chl micro foss frags, micro ool, calc xln fill, shl gry drk gry blk, tr blk carb in prt, tr wxy grsytext

shl gry, drk gry blk, blk carb, gran gritty wxy grsy pcs, abun gas bubs

shl gry drk gry blk, lst tan off tan lt gry to buff f vf xln dns hrd blk flky, micro foss frags

lst crm buff, lt gry f vf xln blk ang flky sub chlky pcs, micro foss frags, some calc xln fill

spl all graphite, lst buff gry f vf xln dns blk ang flky, sub chlky, some soft gran arg, silts, calc xln fill

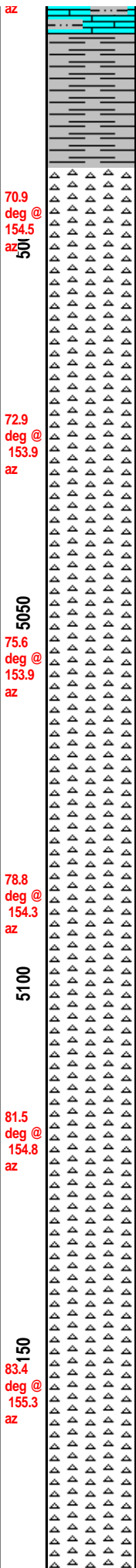
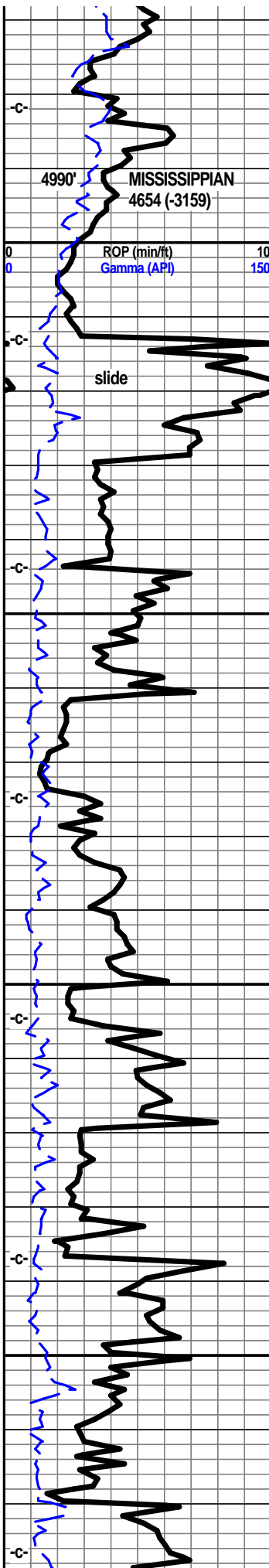
lst off wth lt gry, tr buff/gry f vf xln gran flky, dns hrd, calc xln fill, micro foss frags, shls gry brn green silty gritty calc in prt



Mud-Co. 4797' wt. 9.1+ vis. 49 wl. 8.0 chl. 2,000

TG

100



1st gry buff tan f vf xln blkly ang flky hrd arg silty, shls gry green blk, ratty silty

chrt lt gry, lt smokey gry, frsh shrp opaq transl, sub transp, chrt clr shrp frsh semi opa, shrp blkly ang shards

chrt lt gry, lt tan, tr smokey, tr clr, shrp frsh opa, trans, tr transp, shrp blkly ang shrd, with chrt gry tan mott, lt tan brn stain, tr gas bubs, pp moldic vis frac por, nodor, sli UV, filmy SFO/gas when brkn

chrt clr, lt gry lt smokey gry, shrp frsh opa, some clr transp, tr gry transl, blkly ang shrd, lt gry smokey with tan lt brn mott stain, scatt UV, pp sli moldic por, filmy SFO w/brkn, some with tan lt green dolo edge, glau

chrt off wht lt gry, lt smokey gry, shrp frsh opa, sub transl, some transp, off wht gry chrt w/tan brn stained sli weath edge text, pp moldic por, tan brn stained, filmy sfo w/brkn, tr gas, sli UV, tan crm lt green vf xln dolo edge, tr glau, nodor

chrt lt blue gry, lt smokey gry, shrp frsh opa, sub transl, tr transp, frac por with tan stain, chrt off wht lt gry shrp frsh opa with sli weath gran gritty edge, tan brn stain, filmy SFO w/brkn, tr gas, nodor, sli UV, tan crm lt green f vf xln dolo/dolo, sub chlky gritty sndy glau with chrt inclu, tr stain

chrt lt gry blkly, lt smokey, shrp frsh opa, sub transl, tr transp, blkly ang shards, chrt tan lt brn, dolo in prt, weath gran gritty sli chlky text, pp moldic por, tan lt brn stain, VSSFO/filmy SFO w/brkn, tr gas bubs, sli UV, nodor, dolo tan lt brn f vf xln gran soft chlky tr glau

chrt lt gry blue, smokey color, shrp frsh opa shards, transl, tr transp, chrt tan lt brn gry mott, gran sli chlky weath sli trip text, pp moldic por, tan brn stain, VSSFO/filmy SFO w/brkn, tr gas bubs, tan lt gry/green dolo edge, pp moldic por, tan lt brn stain, sli odor in all?

chrt lt arv. arv blue. shrp frsh opa. chrt lt arv

