

Woolsey Operating Company, LLC

Scale 1:600 (2"=100") Metric
Measured Depth Log

Well Name: Michel #2 H
Location: Section 7 - Township 34 South - Range 11 West
License Number: 15-007-24014-01-00 Region: Barber County, KS
Spud Date: Drilling Completed:
Surface Coordinates: 2170' FNL & 620' FWL
Apx. NE SW SW NW
Bottom Hole Coordinates:
Ground Elevation (m): 1479' K.B. Elevation (m): 1496'
Logged Interval (m): To: Total Depth (m):
Formation: Heebner >>> Mississippian
Type of Drilling Fluid: Chemical Mud, Water/Flozan
Printed by HORIZONTAL.LOG from WellSight Systems 1-800-447-1534 www.WellSight.com

OPERATOR

Company: Woolsey Operating Company, LLC
Address: 125 N. Market Suite 1000
Wichita, Kansas 67202

GEOLOGIST

Name: Bill Klaver
Company: Woolsey Operating Company, LLC
Address: 125 N. Market Suite 1000
Wichita, Kansas 67202

Casing:

Big Bucket's set 20" X 53#/ft conductor to 41' with 4 yards of grout on April 17, 2013. Ran 8 joints of new 13 3/8" X 54.5#/ft casing to 336' KB (tally 336') with 330 sx Class A, 2% gel, 3% cc. Plug down 3 am on 4/24/13. Cement did circulate.

Ran 119 joints of new 7" X 23#/ft casing to 5237' KB with 50 sx 60/40 pozmix, 150 sx Class H.

Remarks:

Gas Detector: Woolsey Operating Co. Gas Trailer #2

Mud Systems: Mud Co. Brad Bortz, Terry Ibson, Engineers

Directional Systems: Calmena Energy Services, Heath Marshall, Mark Sanders, Directional Drillers,

MWD Hands: Shane Lewis, David Jay



Crews:





Tool Pusher: Steve "Duke" Ellington, "Slammin" Sammy Fry, Relief





Day Drillers: Johnnie Stone, Jack Lambert,

Night Drillers: Tanner Barber, Terry Stark





ROCK TYPES

 Anhy
 Bent
 Brec
 Cht

 Clyst
 Coal
 Congl
 Dol

 Gyp
 Igne
 Lmst
 Meta

 Mrlst
 Salt
 Shale
 Shcol

 Shgy
 Sltst
 Ss
 Till

ACCESSORIES

MINERAL

Anhy
 Arggrn
 Arg
 Bent
 Bit
 Brecfrag
 Calc
 Carb
 Chtdk
 Chtlt
 Dol
 Feldspar
 Ferrpel
 Ferr
 Glau

Gyp
 Hvymin
 Kaol
 Marl
 Minxl
 Nodule
 Phos
 Pyr
 Salt
 Sandy
 Silt
 Sil
 Sulphur
 Tuff

FOSSIL

Algae
 Amph
 Belm
 Bioclst
 Brach
 Bryozoa
 Cephal
 Coral
 Crin
 Echin
 Fish
 Foram
 Fossil
 Gastro
 Oolite

Ostra
 Pelec
 Pellet
 Pisolite
 Plant
 Strom

STRINGER

Anhy
 Arg
 Bent
 Coal
 Dol
 Gyp
 Ls
 Mrst

Sltstrg
 Ssstrg

TEXTURE

Boundst
 Chalky
 Cryxln
 Earthy
 Finexln
 Grainst
 Lithogr
 Microxln
 Mudst
 Packst
 Wackest

OTHER SYMBOLS

POROSITY

Earthy
 Fenest
 Fracture
 Inter
 Moldic
 Organic
 Pinpoint

Vuggy

SORTING

Well
 Moderate
 Poor

ROUNDING

Rounded
 Subrnd
 Subang
 Angular

OIL SHOW

Even

Spotted
 Ques
 Dead

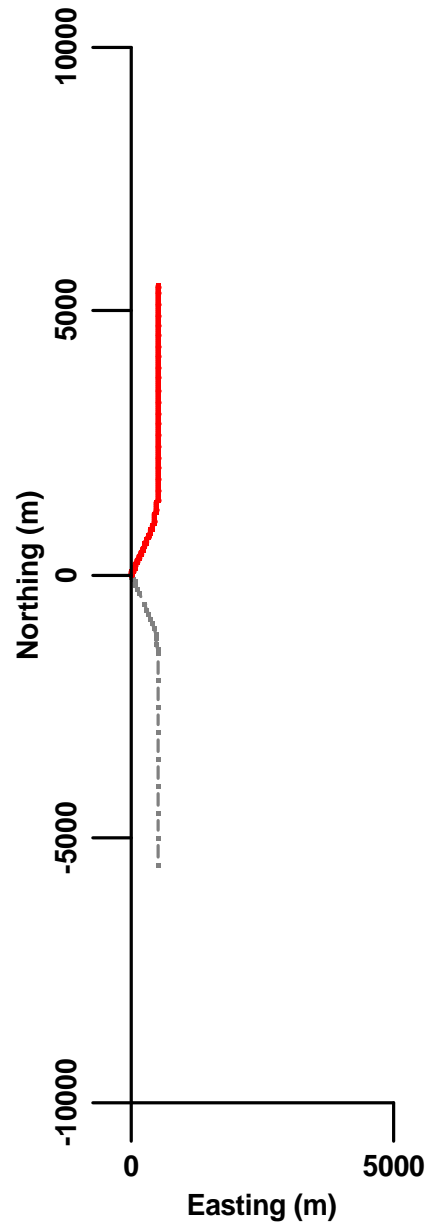
INTERVAL

Core
 Dst

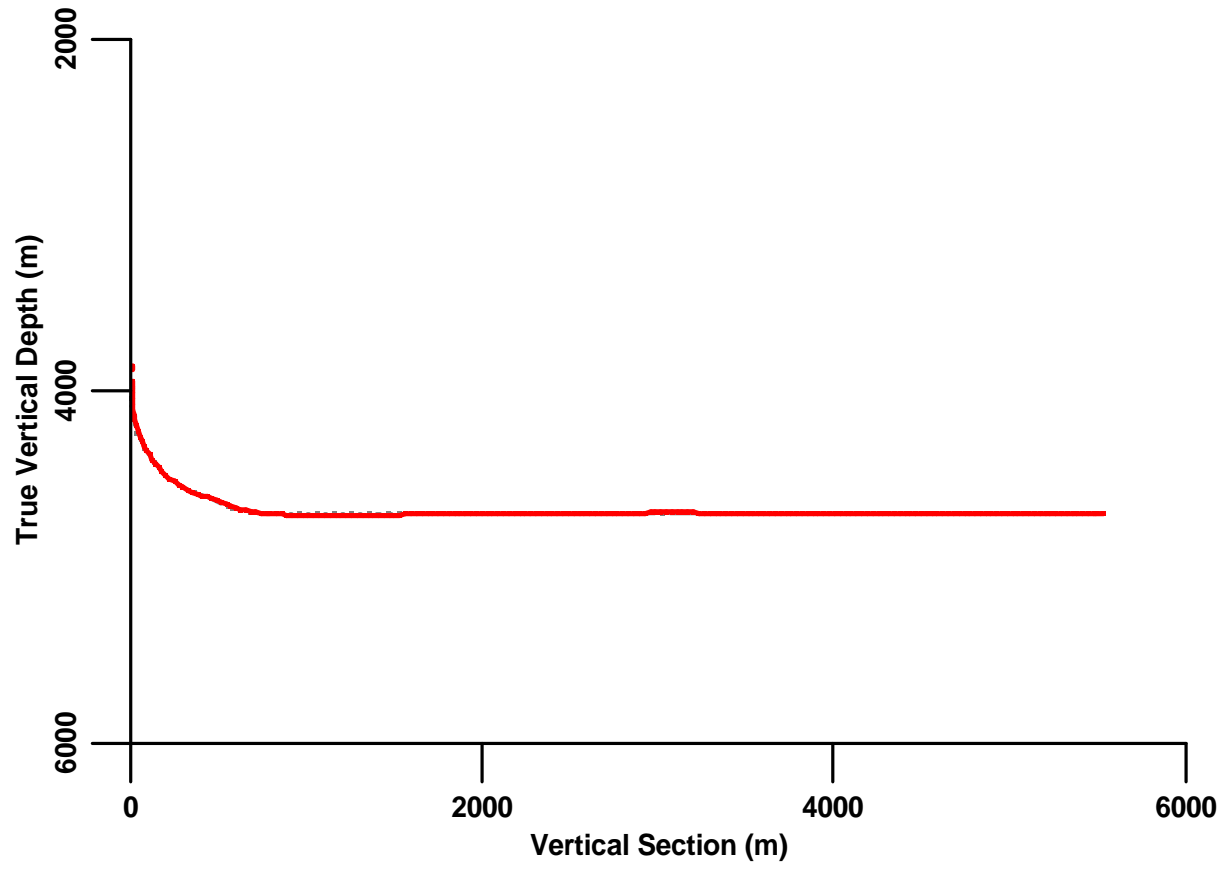
EVENT

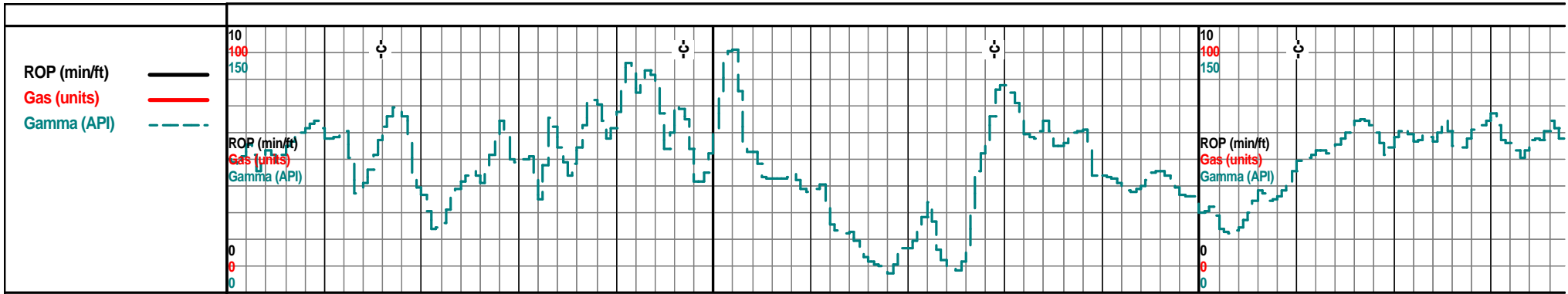
Rft
 Sidewall

Plan



Elevation





Oil Shows

Depth

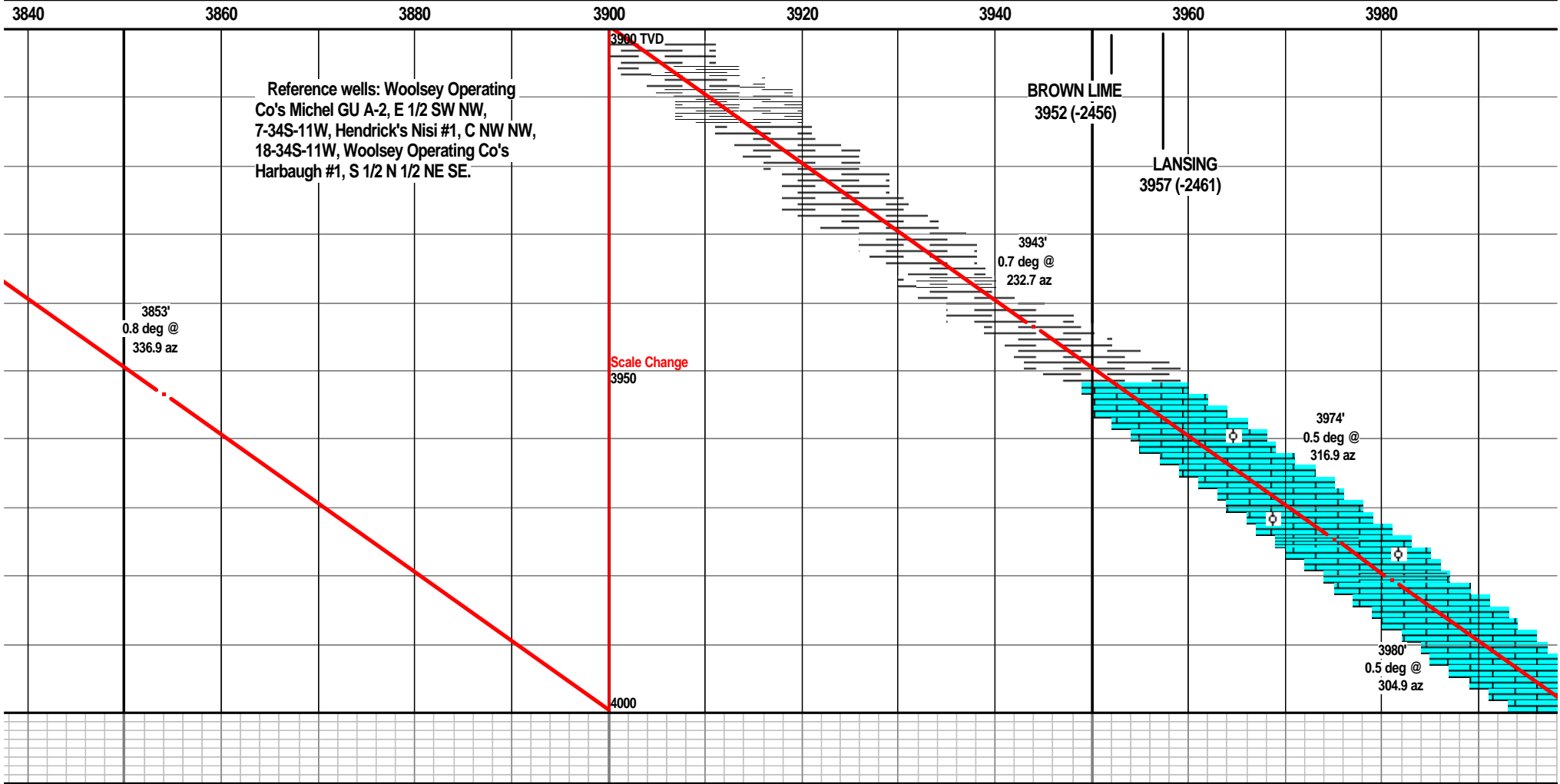
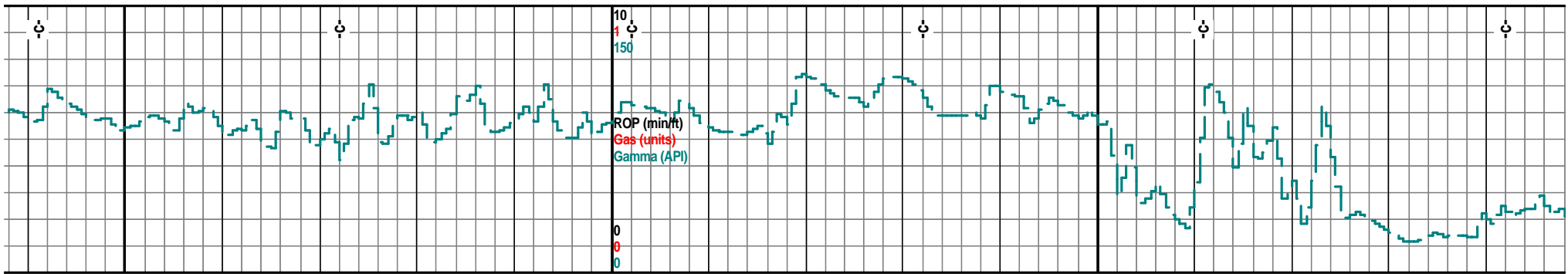
3700 TVD 3720 3740 3760 3780 3800 3820

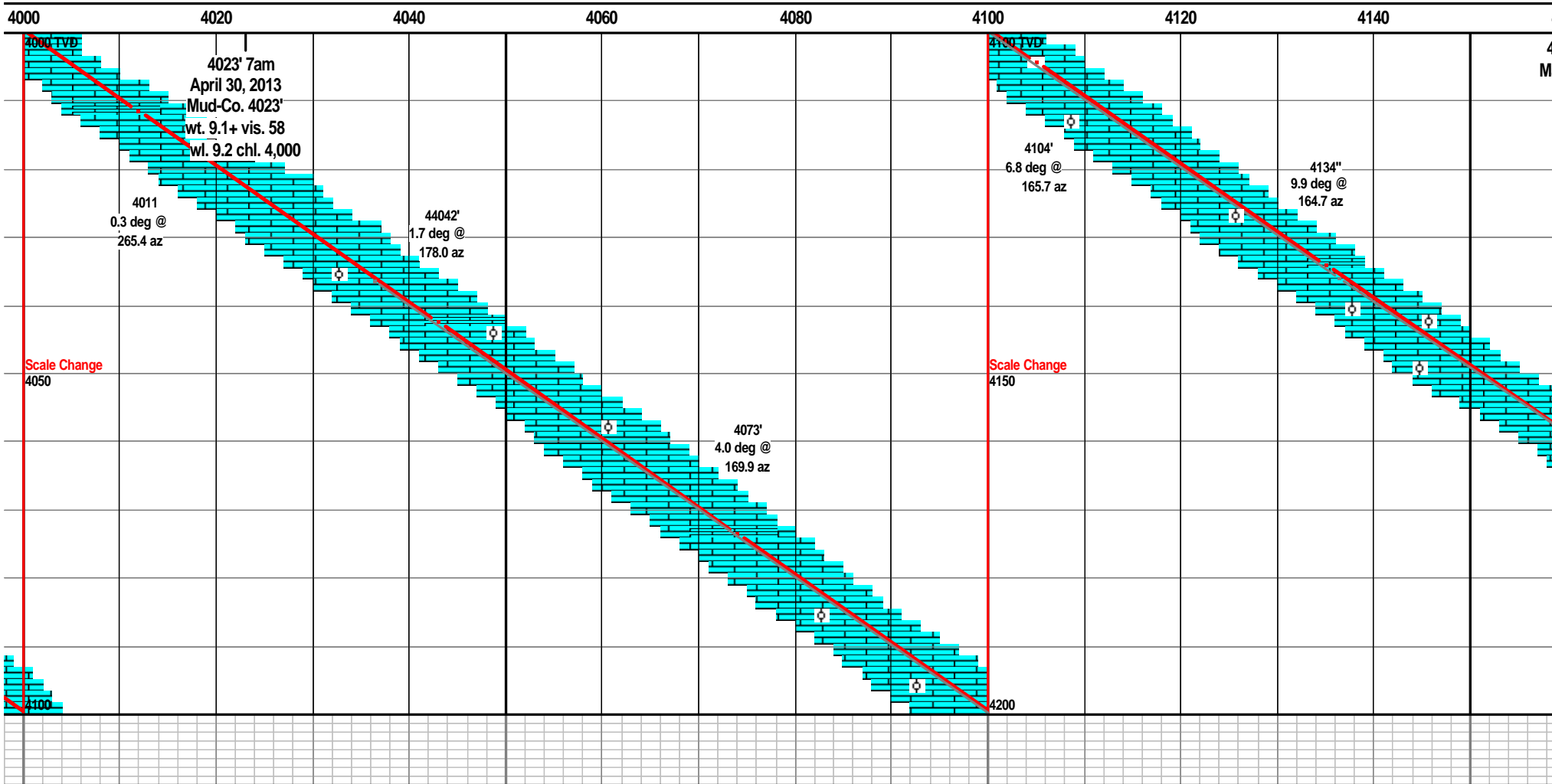
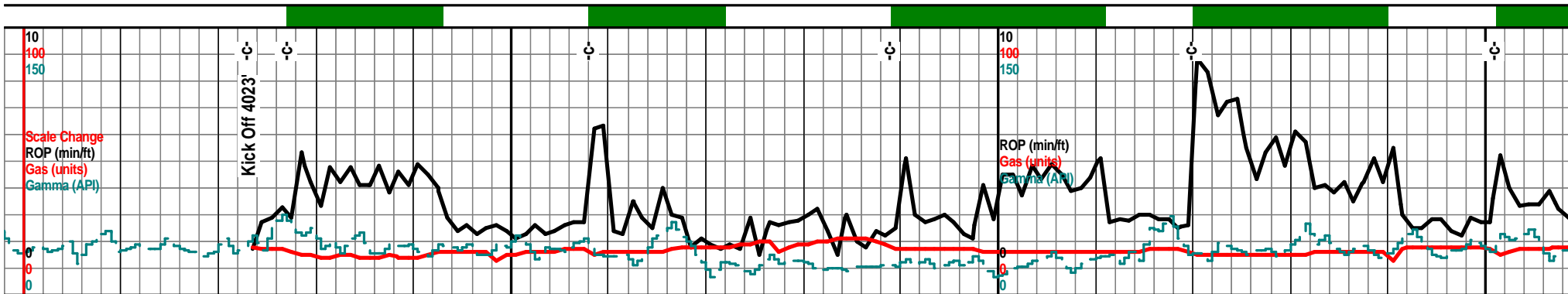
Well Bore Cross Section	3700 TVD		HEEBNER 3750 (-2254)	TORONTO 3762 (-2266)	Sample Tops:		3800 TVD	
		7 am Progress:			LeCompton 3518 (-2022) Kanwaka 3558 (-2062) Elgin Sand 3600 (-2104) Heebner 3750 (-2254) Toronto 3762 (-2266) Brown Lime 3952 (-2456) Lansing 3957 (-2461) Iola 'G' 4298 (-2802) Stark 4422 (-2926) Hushpuckney 4453 (-2957) B/Kansas City 4503 (-3007) Pawnee 4592 (-3096) Cherokee Grp 4642 (-3146) Mississippi 4654 (-3159)		Woolsey Operating Company Michel #2 H 2170' FNL & 620' FWL Apx. NE SW SW NW Section 7 Twp 34 S Rge 11 W Rhodes South Field Barber County, Kansas API # 15-007-24014-01-00	
		April 22, 2013 MIRT		May 19, 2013 Drilling at 8763'				
		April 23, 2013 MIRT/SPUD		May 20, 2013 Bit Trip at 8886'				
		April 24, 2013 WOC at 340'		May 21, 2013 Drilling at 9155'				
		April 25, 2013 Nipple up at 800'		May 22, 2013 Drilling at 9623'				
		April 26, 2013 Drilling at 1240'		May 23, 2013 Bit Trip at 9670'				
		April 27, 2013 Drilling at 2070'		May 24, 2013 Drilling at 9902'				
		April 28, 2013 Drilling at 2720'						
		April 29, 2013 Drilling at 3350'						
		April 30, 2013 TOO H at 4023'						
		May 1, 2013 Drilling at 4162'						
		May 2, 2013 Drilling at 4515'						
		May 3, 2013 Drilling at 4755'						
		May 4, 2013 Drilling at 5020'					Scale Change	
		May 5, 2013 Running 7" casing		3761'			3850	
		May 6, 2013 TIH with drill pipe		0.7 deg @ 327.3 az				
		May 7, 2013 Drilling at 5610'						
		May 8, 2013 Bit Trip at 5943'						
		May 9, 2013 Drilling at 6350'						
	May 10, 2013 Bit Trip at 6884'							
	May 11, 2013 Drilling at 6931'							
	May 12, 2014 Drilling at 7400'							
	May 13, 2013 Bit trip at 7460'							
	May 14, 2013 Casing parted, 7460'							
	May 15, 2013 TIH w/Bit at 7460'							
	May 16, 2013 Drilling at 7800'							
	May 17, 2013 Bit Trip at 8208'							
	May 18, 2013 Drilling at 8420'							
	3800						3900	

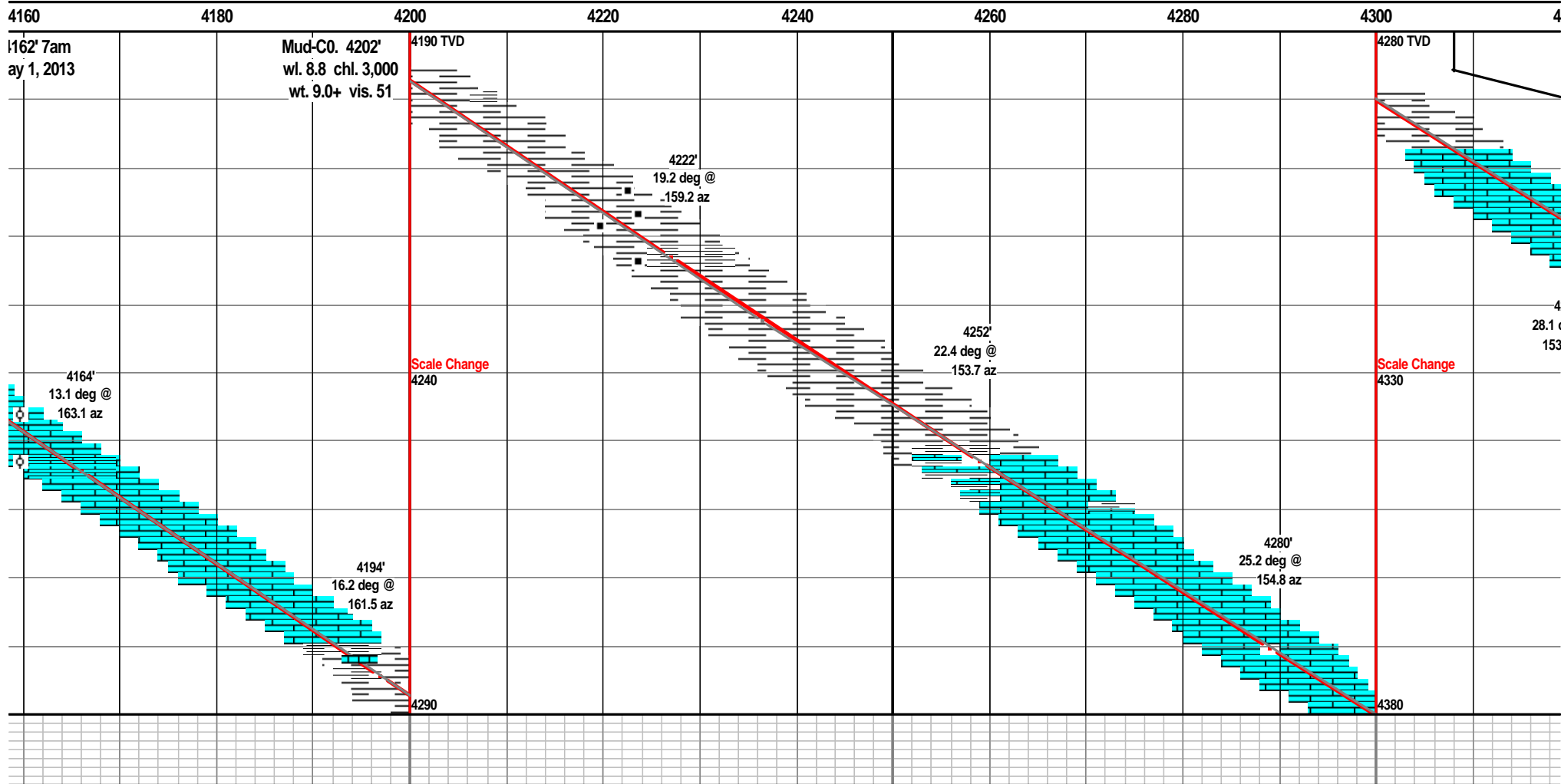
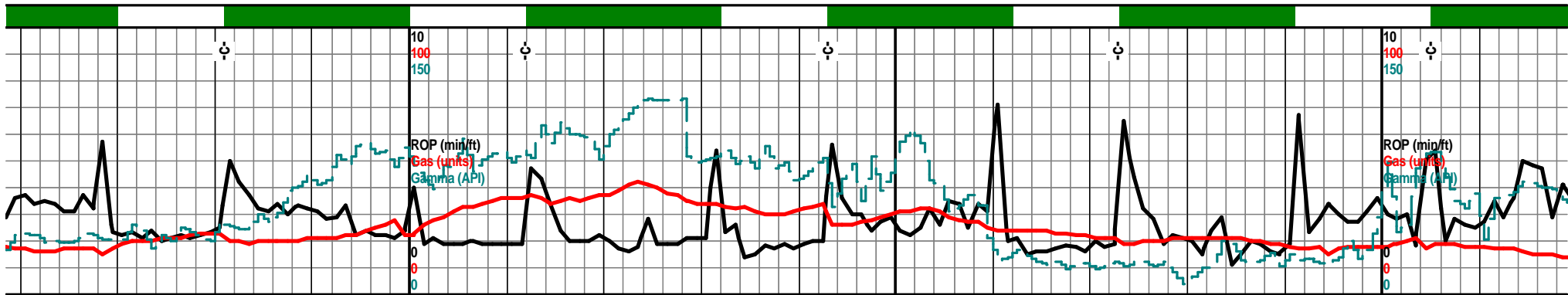
Porosity

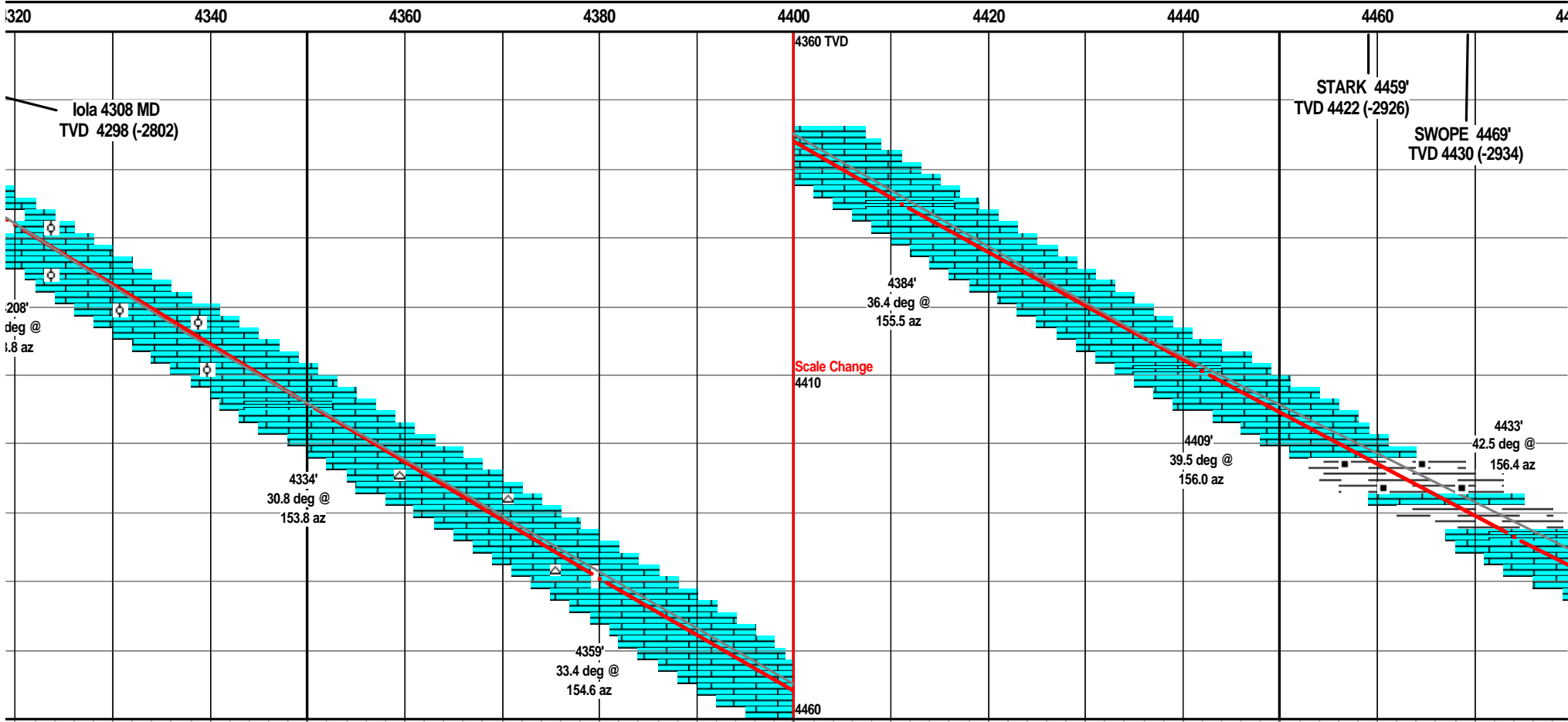
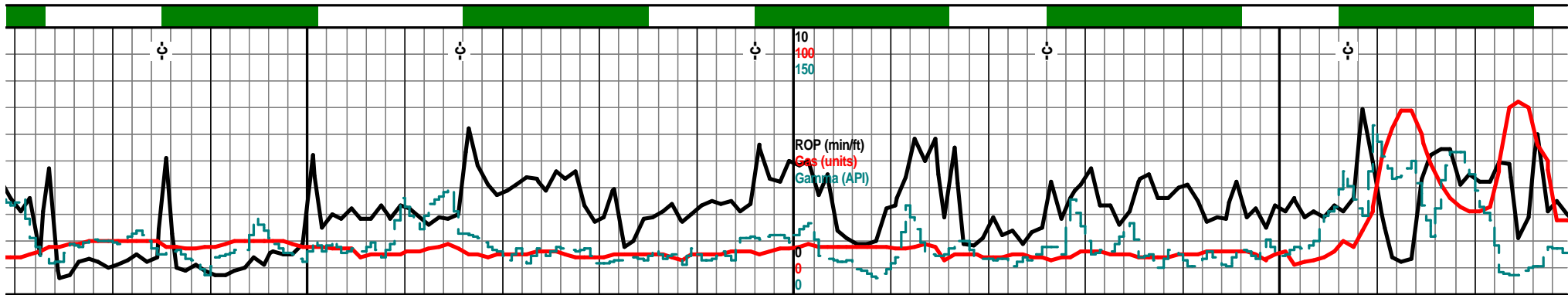
24%
18%
12%
6%

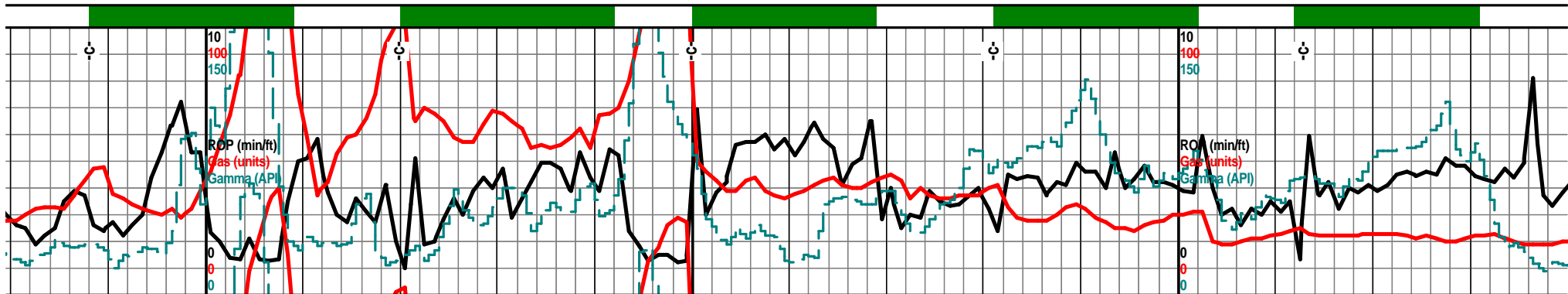
Porosity Type



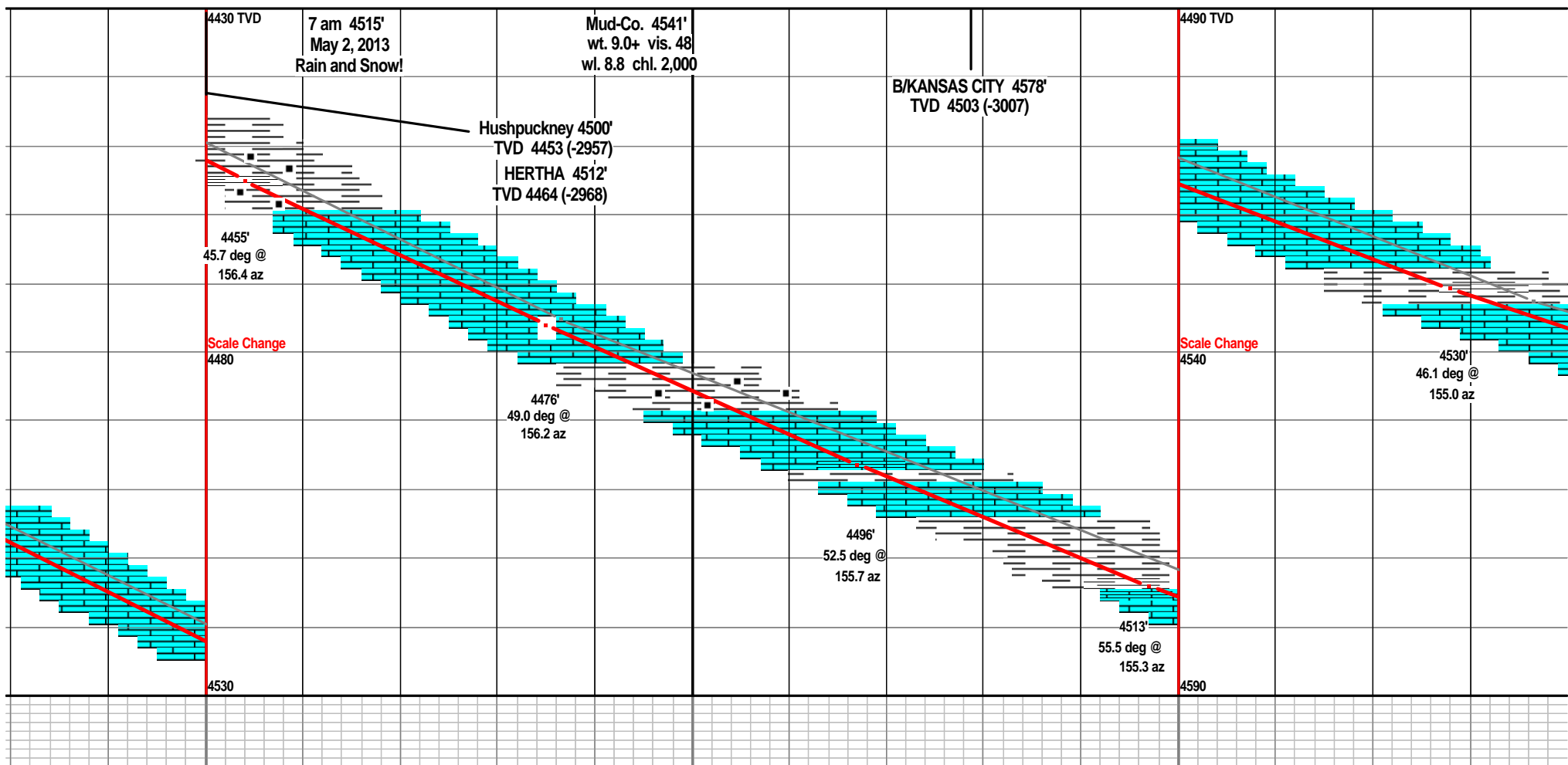


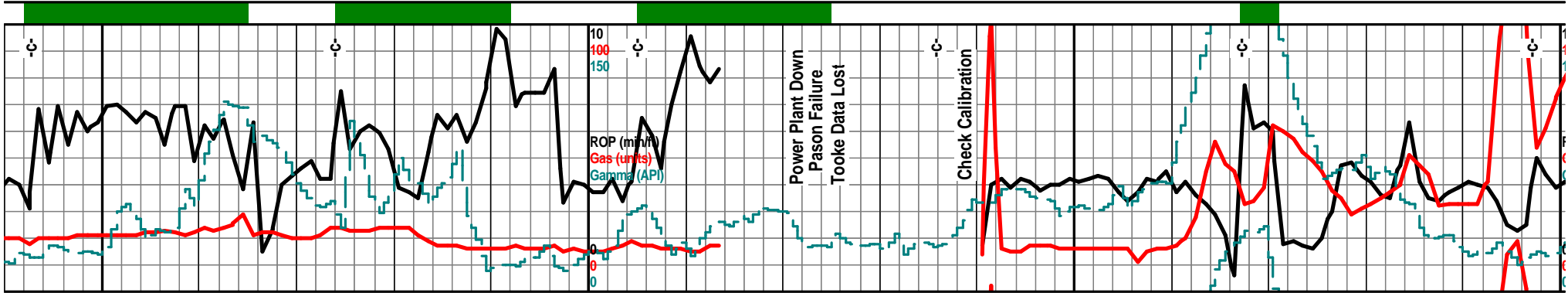




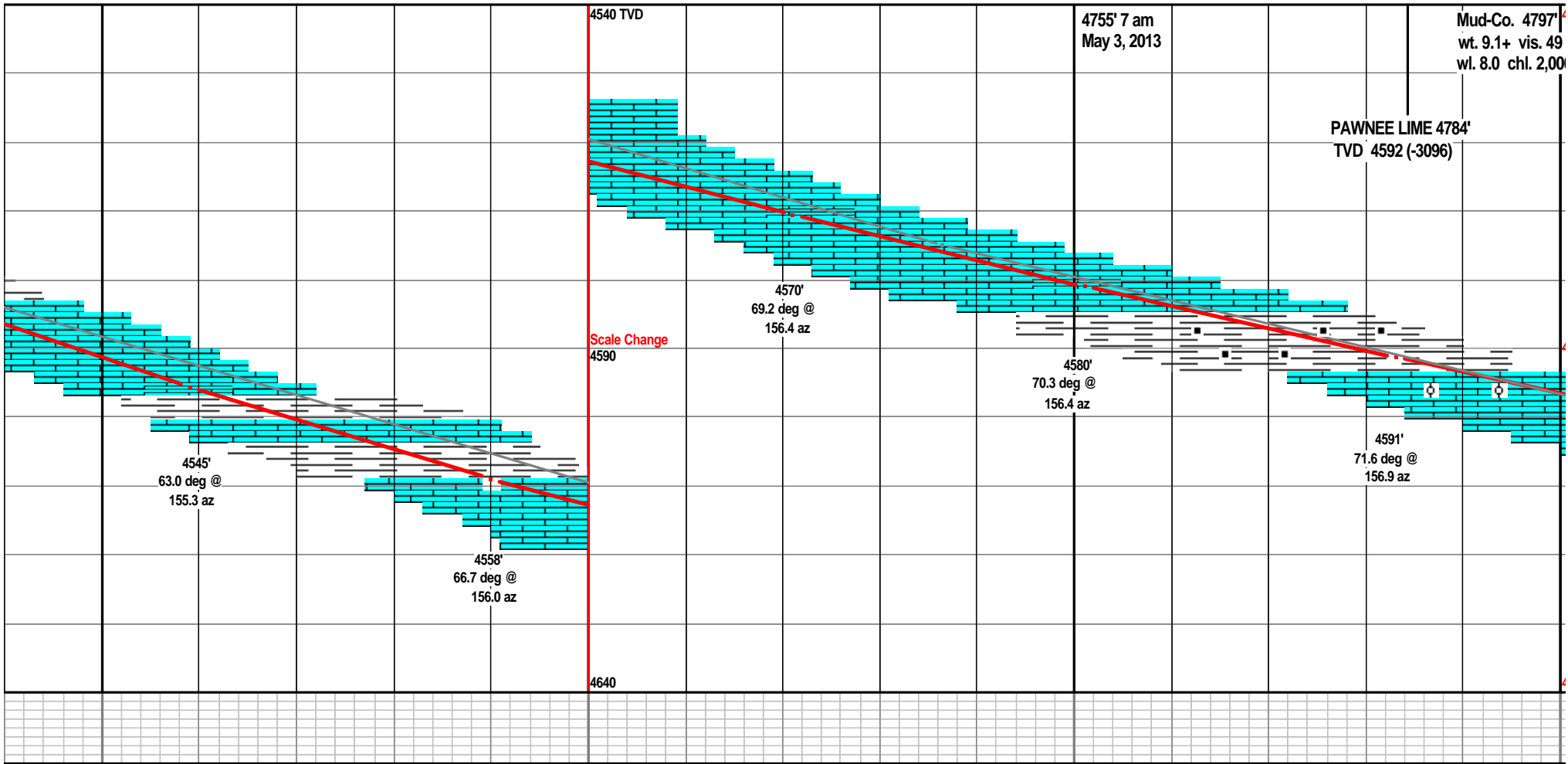


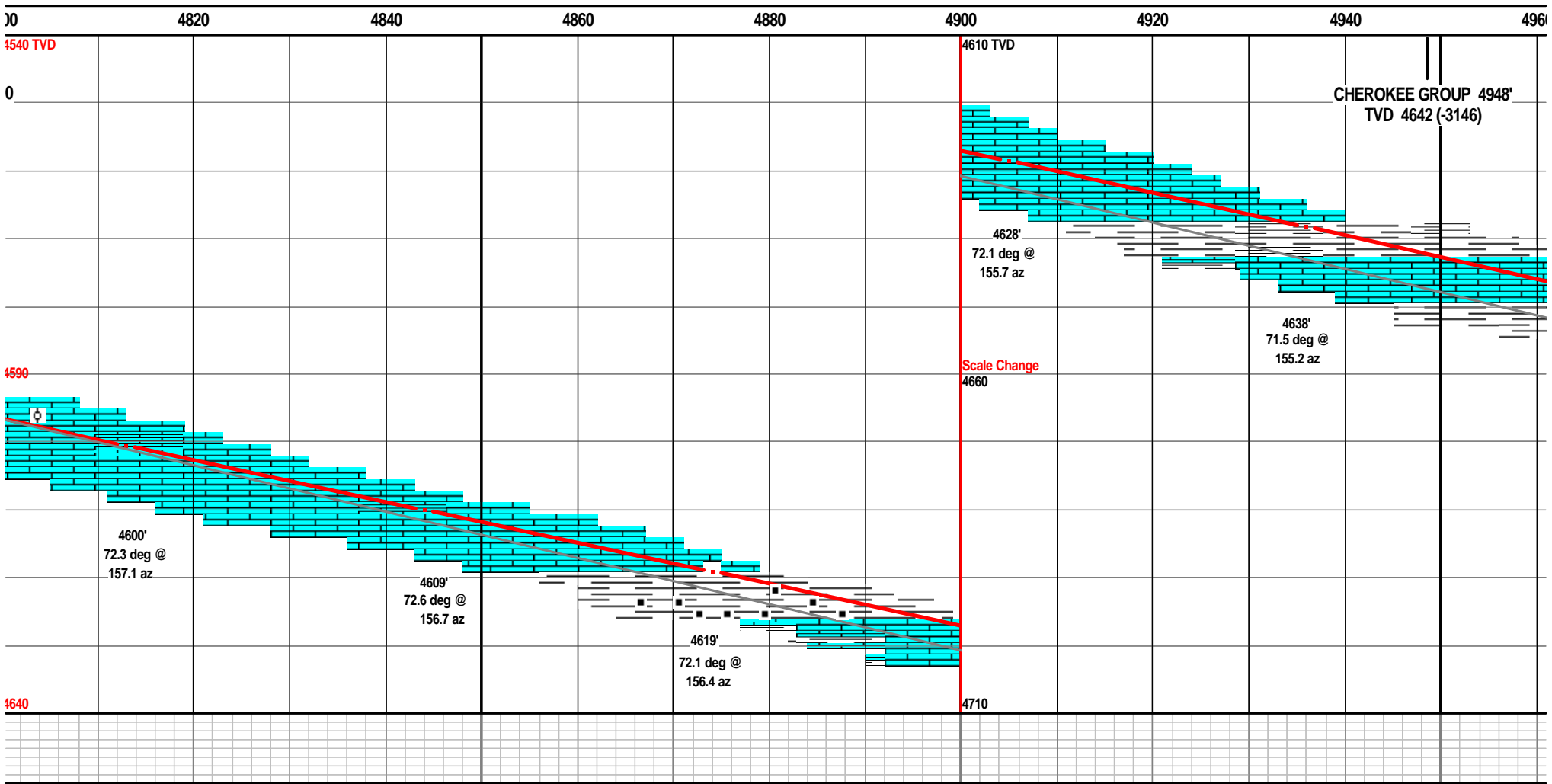
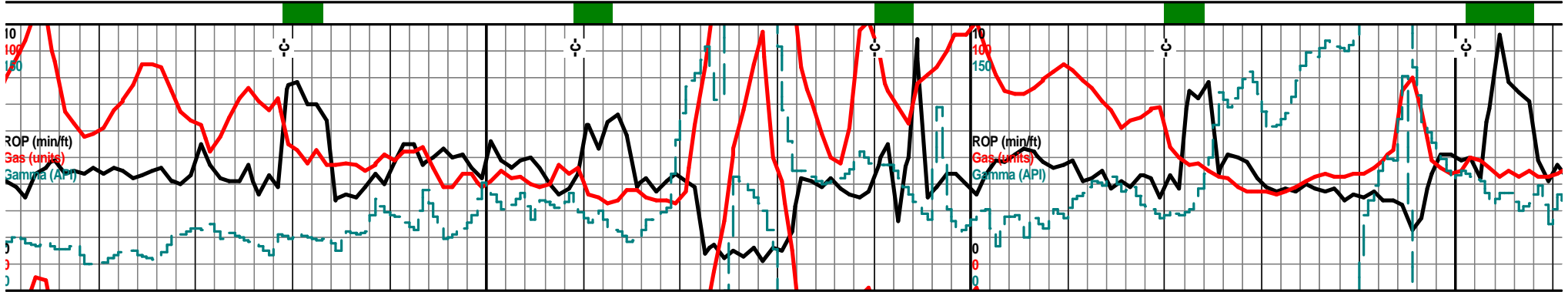
480 4500 4520 4540 4560 4580 4600 4620 46

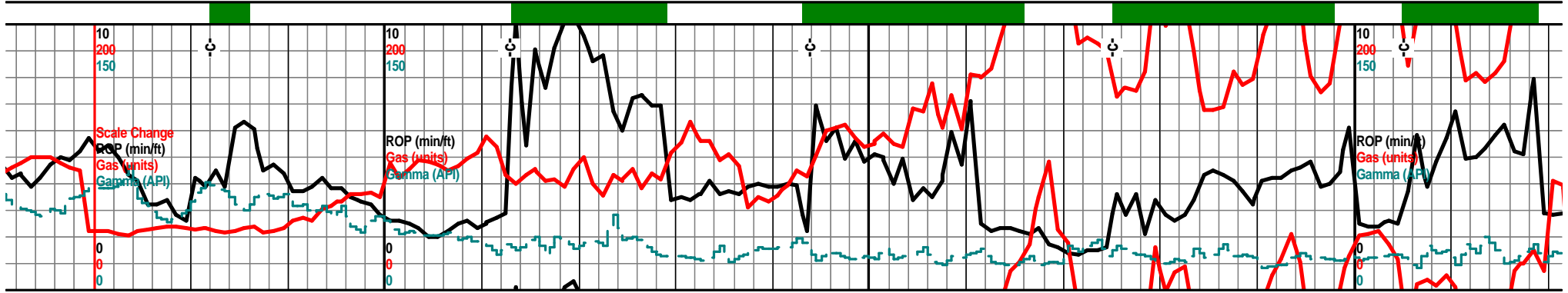




40 4660 4680 4700 4720 4740 4760 4780 480

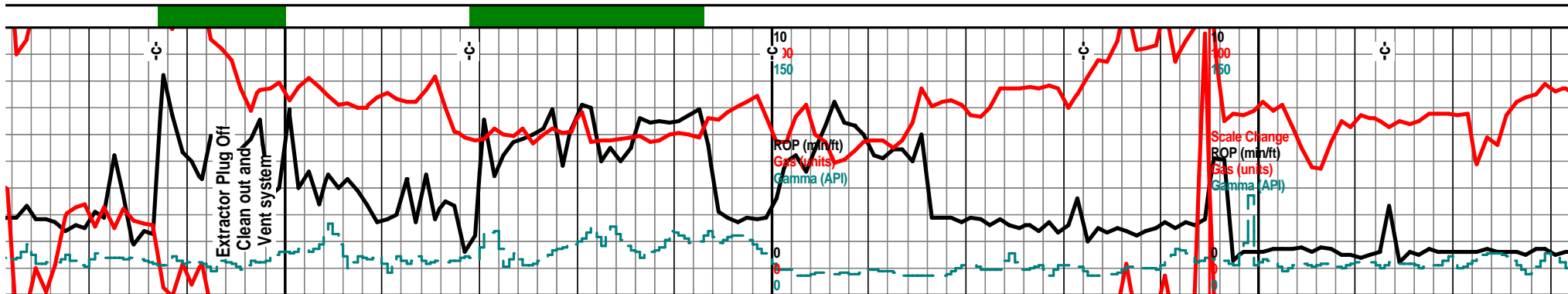






0 4980 5000 5020 5040 5060 5080 5100 5120

<p>MISSISSIPPIAN 4990' TVD 4654 (-3154)</p>	<p>4610 TVD</p>	<p>5020' 7 am May 4, 2013</p>	<p>Mud-Co. 5044' wt. 9.0 vis. 53 wl. 8.8 chl. 2,000</p>	<p>4640 TVD</p>
<p>4648' 71.1 deg @ 155.3 az</p>	<p>4658' 70.9 deg @ 154.5 az</p>	<p>chrt clr lt gry lt smokey gry, shrp blk ang shrds, some transl, tr clr to transp, chrt lt gry off wht w/tan lt brn mott stain w/sli weath text, pp moldic por, nodor, filmy SFO w/brkn, tr gas scatt dull UV, chrt aa with tan off wht lt green vf xln sub chlky dolo edge, tr glau</p>	<p>chert lt blue/gry. lt smokey, shrp frsh opaag shards, transl, tr transp, frac por w/stain, chrt wht off wht shrp frsh w/weath gran text edge, tan brn stain, filmy SFO w/brkn, tr gas, scatt dull UV, nodor, lst/dolo crm tan lt gry green in prt, f vf xln gran soft sub chlky glau with chrt inclu, tr stain, sndy gritty in prt</p>	<p>chrt lt blue gry, sn transl, tr transp, b tan lt brn, dolo in text, pp moldic po gas bubs, sli dull brn stained, f xln,</p>
<p>chrt clr lt gry, lt smokey gry shrp frsh opaag, ang shrds, some transl, much clr transp, sli opaag, tr frac, pp por, tr stain, tr with tan lt brn mott sli weath text, filmy SFO w/brkn, tr gas bubs, nodor</p>	<p>4667' 72.9 deg @ 153.9 az</p>	<p>chrt off wht lt gry tr lsmokey gry shrp frsh opaag, sub transl, some transp, chrt lt gry wht w/tan brn sli brn stained sli weath edge text, pp moldic por, tan brn stain, filmy SFO w/brken trace gas, sli UV, above with sli tan crm lt green dolo edges, tr glau,</p>	<p>4676' 75.6 deg @ 153.9 az</p>	<p>4683' 78.8 deg @ 154.3 az</p>
<p>4710</p>	<p>4710</p>	<p>4710</p>	<p>4710</p>	<p>4740</p>



5140 5160 5180 5200 5220 5240 5260 5280

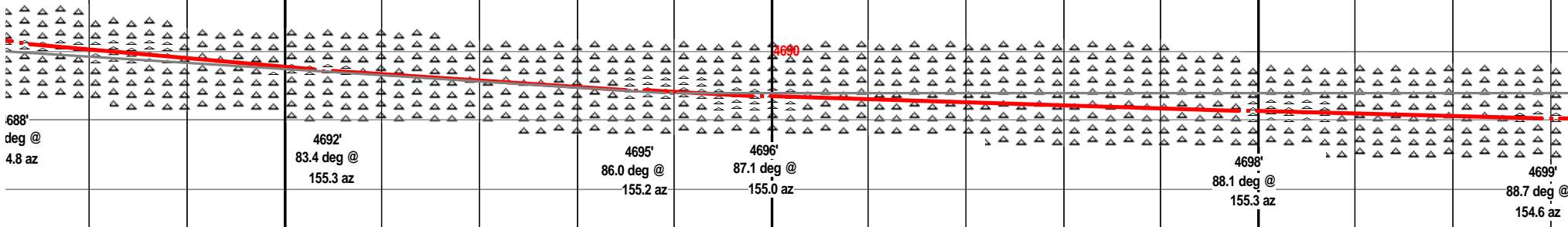
4640 TVD
7" Intermediate Casing
Depth 5245'

nokey gry, shrp frsh opa, sub lky ang shards, tr frac por, chrt prt, weath gran soft sli chiky r, VSSFO, filmy SFO w/brkn, tr UV, tan lt brn stain, dolo tan lt chiky chrt gritty gran text

chrt off wht lt gry/blue gry, shrp frsh opaq transl shrds, chrt lt gry tan lt brn mott, weath gran sli trip text, pp moldic por, pp por, tan lt brn stain, SSFO w/brkn, sli show gas bubs w/brkn, crm tan tr lt green dolo w/glau edge, sli odor??

chrt lt gry off wht shrp frsh opa, transl shards, chrt off wht crm tan tr gry mott, weath gran sli trip text, crumbly in prt, pp moldic por, pp por, even tan lt brn stain, filmy SFO, gas bubs w/brkn, dull scatt UV, nodor in any

chrt wht off wht lt gry, lt shrp biky ang shards, su weath gran crumbly text, stain in prt, nodor, tr film



688' deg @ 4.8 az

4692' 83.4 deg @ 155.3 az

4695' 86.0 deg @ 155.2 az

4696' 87.1 deg @ 155.0 az

4698' 88.1 deg @ 155.3 az

4699' 88.7 deg @ 154.6 az

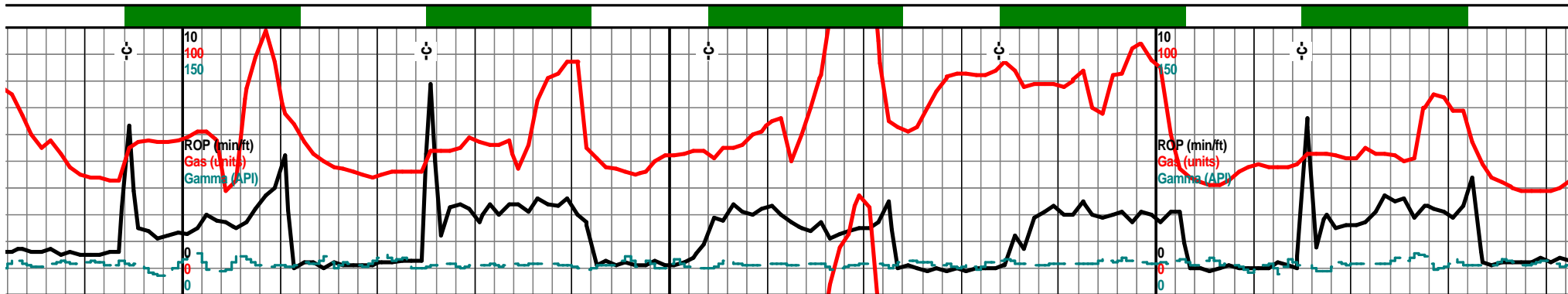
shrp frsh opaq biky ang sp, frac por, chrt off wht text, w/lt dolo edges, in, filmy SFO w/brkn,

chrt lt blue gry, lt smokey, shrp frsh opaq shrp shrds, transl, sli transp in prt, chrt tan gry lt brn tan mott, gran, weath sli trip text, pp moldic por, tan brn stain, sli odor??, VSSFO/filmy SFO w/brkn, tr gas bubs, sli scatt UV, tr tan off wht lt green dolo edge, glau, chrt inclu

chrt off wht lt gry shrp frsh opaq shrp shards, transl, chrt lt gry crm tan lt brn mott, weath gran crumbly text, pp moldic por, pp por, tan lt brn stain, VSSFO w/brkn, sli trace gas, scatt dull UV

chrt wht off wht lt gry, shrp frsh opaq shards, transl, tr lt gry shrp frsh opa, sub transl, tr weath gran text, pp moldic por, lt tan stain, nodor, filmy SFO w/brkn

4740



5300 5320 5340 5360 5380 5400 5420 5440

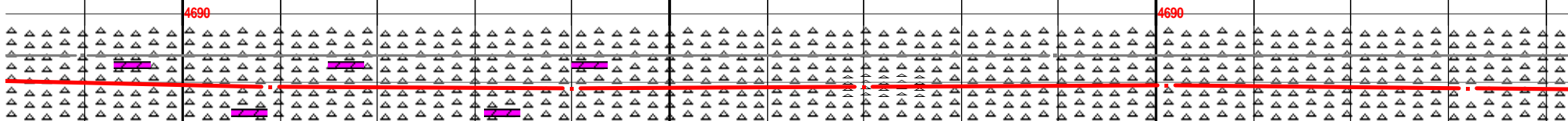
4640 TVD 4640 TVD

gry smokey color, frsh b transl, tr transp, tr tr pp moldic por, lt tan y show on brk

chrt wht off wht lt gry shrp frsh opa, sub trans shrds, weath gran soft crumbly text, glau, pp moldic por, tr lt brn stain, VSli filmy SFO w/brkn, dolo chrty dolo, wht off wht tr vry lt gry, f xln gran, sucr text, glau, sndy text, chrty with chrt inclu aa, tr tan lt brn stain, nodor, dull vry scatt UV

chrt off wht lt smokey gry, lt blue gry, shrp frsh opa, blk ang shrds, sub transl, tr w/transp, chrt crm tan frsh with w/weath gran crumbly text, pp moldic por, inter gran por, tan lt brn stain, tr blk hvy stain, sli odor?, scatt dull UV, tr crm tan off wht dolo, f xln gran sndy, glau, chrty with lt blue gry chrt inclu

Okie crew is short-handed, keep missing samples, Geologist suggested they wake up the pusher to help take up the slack. I even offered to wake him myself. Samples now on time and clean.



4700'
88.7 deg @
156.4 az

4700'
90.4 deg @
159.2 az

4700'
90.7 deg @
162.2 az

4700'
89.9 deg @
165.2 az

4700'
89.1 deg @
168.5 az

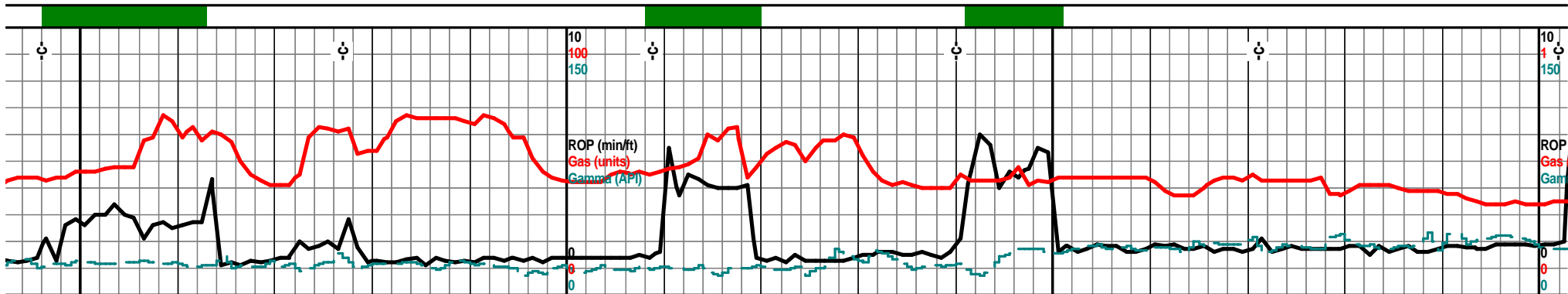
chrt wht off wht frsh shrp blk y pcs, opa, sub transl, w/weath gran semi crumbly text, pp moldic por, tr tan brn stain, VSSFO w/brkn, dolo wht off wht f xn gran chrty sndy text, glau

chrt wht off wht lt gry shrp frsh opa, sub transl, tr transp, weath gran crumbly text, pp moldic por, tan lt brn stain, sli odor?, filmy SFO w/brkn, tr gas w/brkn, scatt dull UV, tr dolo off wht lt tan f xln gran soft chrty, w/chrt inclu, glau, tan brn stain, inter xln inter gran por

chrt wht off wht lt gry, smokey gry, shrp fr opa, sub transl, tr transp, blk ang shrds off wht tan, w/weath gran crumbly some s pp moldic por, inter gran por, small vug p tan, tan and brn stain, tr blk hvy stain, sli floaters, VSSFO & gas bubs w/brkn, dull s

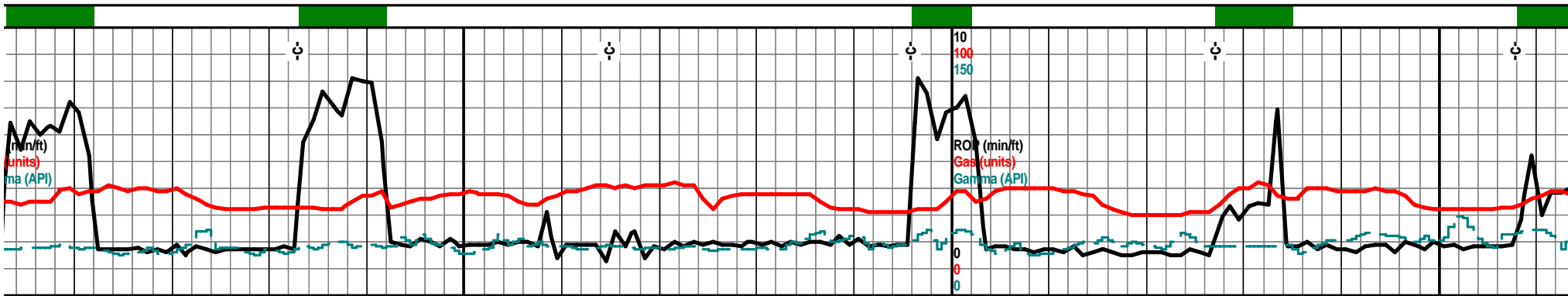
4740

4740



5460 5480 5500 5520 5540 5560 5580 5600

			4640 TVD							4640
<p>chrt off wht, wht, tr lt smokey gry, shrp frsh opa, transl, chrt tan wht off wht, weath gran crumbly text, sndy gritty in prt, some weath sli trip text, pp moldic por, tan lt brn stain, tr hvy brn stain, sli odor, VSSFO w/brkn, filmy SFO w/brkn, tr gas bubs, scatt rare UV</p>			<p>chrt off wht lt gry smokey shrp frsh opa sub transl, some transp in prt, blk ang shards, with chrt wht off wht w/gran sli weath sli trip text edge, pp moldic por, tan lt brn stain, tr hvy brn stain, sli odor, SSFO, filmy SFO w/brkn, tr gas bubs, sli scatt UV</p>			<p>chrt wht off wht, lt gry shrp frsh opa, sub transl, tr transp, blk ang shards, gran weath crumbly text, tr glau, tr sndy gritty dolo text, pp moldic inter gran por, tan lt brn stain, tr hvy brn stain, filmy SFO & gas bubs when brkn, dec sho, incr soft crumbly dolo text</p>				
			4690							4690
	4700'		4701'		4702'		4704'		4705'	
	88.9 deg @ 171.5 az		171.9 deg @ 171.9 az		87.9 deg @ 170.6 az		87.0 deg @ 168.5 az		87.1 deg @ 168.5 az	
<p>rsh s, chrt ndy text, or, lt odor, tr scatt UV</p>			<p>chrt wht off wht lt gry, lt smokey gry, shrp frsh opa, blk ang shrp shards, sub transl, sli transp in prt, with sli weath gran sli trip edge text, tan lt brn stain, tr hvy brn stain, filmy SFO & gas bubs w/brkn. scatt dull UV</p>			<p>chrt wht off wht lt gry, lt smokey gry, shrp frsh blk ang opa shards, chrt wht off wht, lt tan, gran sli trip, crumbly, pp moldic, inter gran por, tan lt brn stain, sli odor, VSSFO, filmy SFO & gas bubs w/brkn, scatt dull UV</p>			<p>chrt wht off wht, lt gry, lt smokey gry, shrp frsh opa, blk ang shrp shards, sub transl, sli transp in prt, with sli weath gran sli trip edge text, tan lt brn stain, tr hvy brn stain, filmy SFO & gas bubs w/brkn. scatt dull UV</p>	
			4740							4740



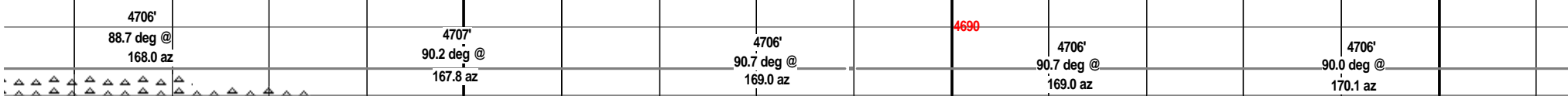
5620 5640 5660 5680 5700 5720 5740 5760

TVL 5610' 6 am May 7, 2013 Mud-Co. 5696' wt. 8.3 + vis 27 w/ NC chl. 600 4640 TVD

chrt lt gry off wht shrp frsh opa sub transl, tr lt gry transp, dolo off wht lt crm gry vf xln gran crumbly, glau, tr chrty, tr chrt inclu, tan brn stain, tr hvy blk stain, fimy SFO w/brkn, filmy RBSFO on water, spl mostly dolo!

dolo lt crm off wht lt tan f vf xln gran soft, blk ang pcs, glau, tr chrty, tr lt gry tan chrt inclu, vis inter xln por, mstly soft mushy dns spls wsh wht

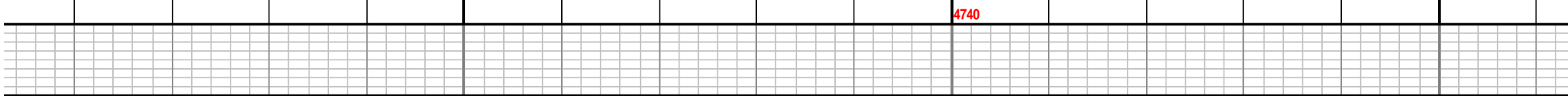
dolo crm off wht lt tan, calc, chlky, glau, inter gran por, tr off wht lt gry, tr lt smokey gr shrp ang shrds, with incr we trip text edge, pp moldic por brn hvy stain, scatt UV

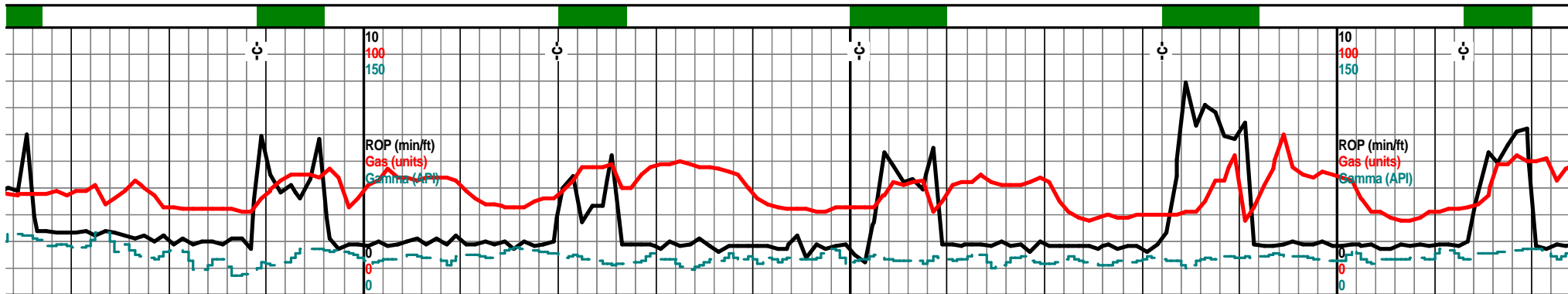


ff lt gry, shrp frsh opa, sub transp, sli ome, blk ang shrds, chrt off wht lt cumbly text, pp moldic por, inter gran brn stain, tr hvy brn stain, tr floaters, gas bubs w/brkn, dull scatt UV, dolo off gry f xln gran glau, chrty, chrt inclu

dolo off wth lt tan lt crm f vf lxn gran soft, sndy text, glau, inter xln por, mstly tite dns, lt gry lt smokey gry chrt inclu, tr chrty, tan brn stain, tr gas bubs, nodor

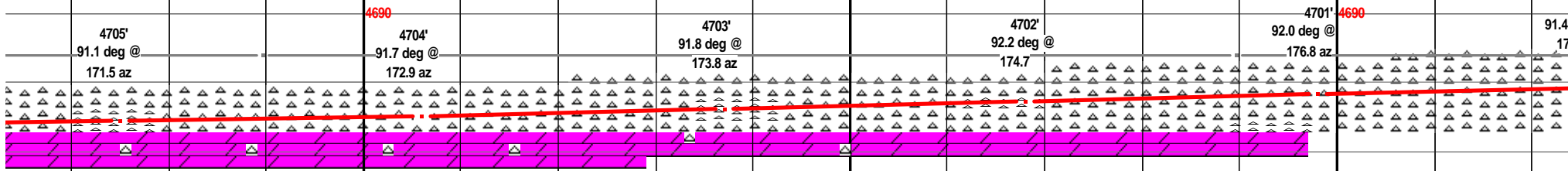
dolo, lst dolo mix, (acid=fizz) f vf xln soft gran sub chlky, glau, tr lt gry shrp frsh chrt inclu, intr gran por, tan brn stain, nodor, dull scatt UV, spls wsh chlky wht





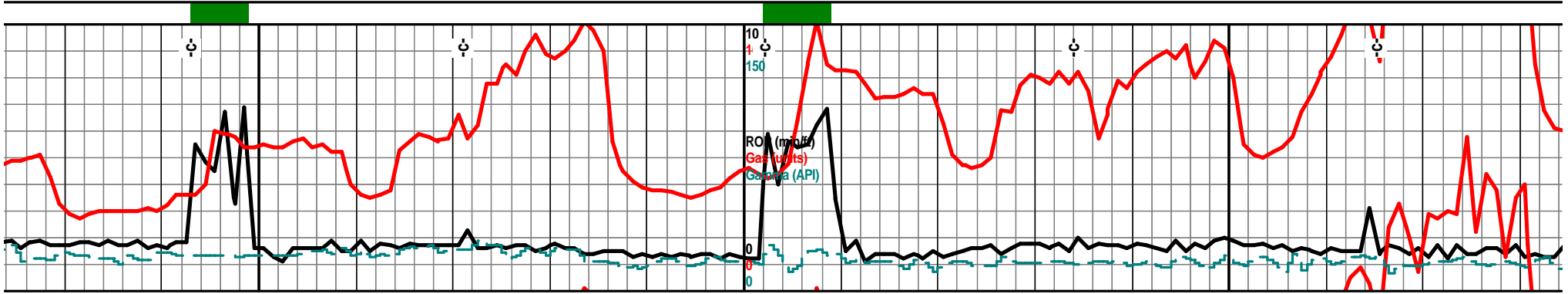
5780 5800 5820 5840 5860 5880 5900 5920

		4640 TVD						4640 TVD		
f vf xln dns sub an brn stain, incr chrt, ry, shrp frsh tansl, xath gran crumbly sli r, tan brn stain, tr drk			chrt off wht lt gry tr lt smokey gry shrp frsh opaqtansl, some transp, biky ang shards, chrt off wht lt crm weath gran crumbly tr dolo text, tr sndy gritty, pp moldic por, tan brn stain, tr hvy blk stain, tr gas bubs, scat rare UV					chrt lt gry off gry, off wht shrp frsh opaqt, subtransl, some transp, biky ang shrp shrds, with chrt off the lt gry w/sli weath gran text, pp moldic por, some small vug por, tan lt brn stain tr hvy brn stain, scatt dull UV, nodor in any of this		

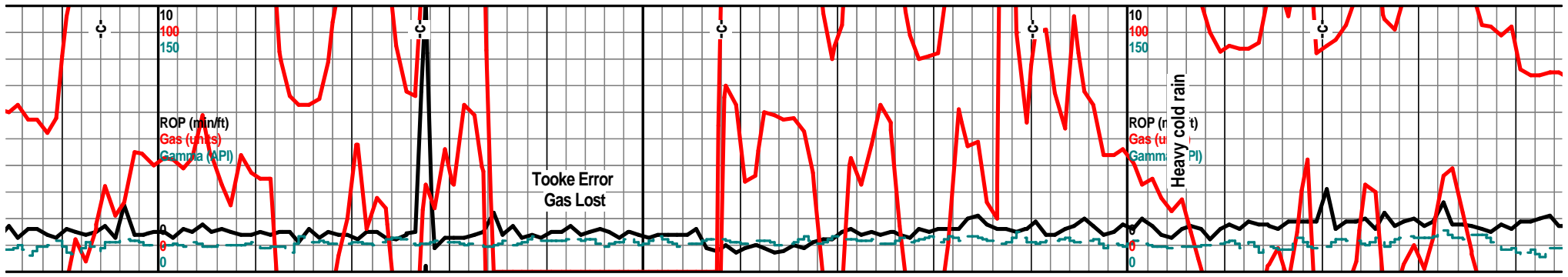


chrt off wht lt gry, tr lt smokey gry, shrp frsh opaqt, subtransl, shrp ang shards, with tr weath gran sli trip text edges, tan lt brn stain, tr drk brn hvy stain, sli odor? scatt dull UV, dolo tan off wht lt tan f vf xln gran glau, tan brn stain, sub chlky dns tite, w/tan brn stain			chrt lt gry lt smokey gry, off wht shrp frsh opaqt, subtransl, some transp, biky ang shrds, chrt wht off wht lt gry shrp frsh as before w/sli weath gran text, pp moldic por, tan brn stain, tr hvy brn stain, nodor tr scatt UV					chrt off wht lt tan, tr lt smokey gry, shrp frsh ang shards, subtransl, some transp. w/sli w sli trip text edges, pp moldic por, small vug tan lt brn stain, tr brn hvy stain, tr floating droplets, tr gas on brk, nodor, scat dull UV-	

4740 4740

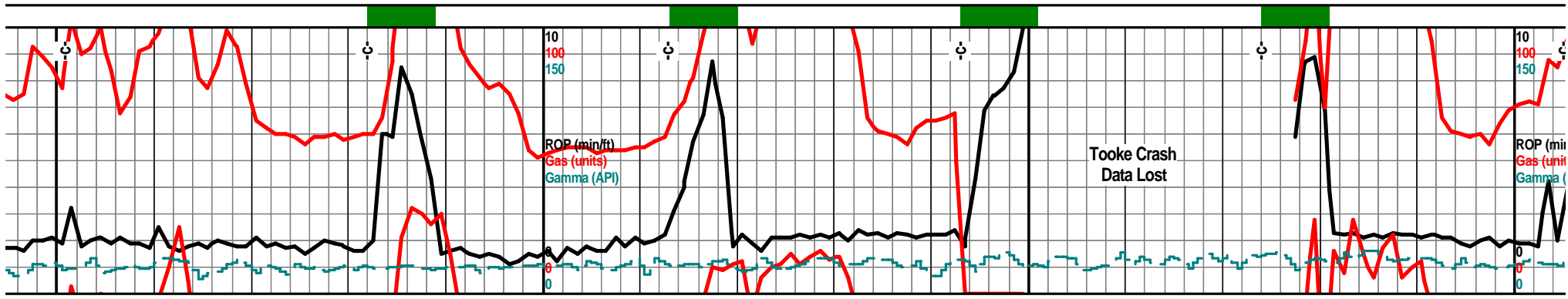


5940	5960	5980	6000	6020	6040	6060	6080
<p>Bit Trip 5943' TIH w/Bit 7am May 8, 2013</p> <p>chrt off wht lt gry, lt smokey gry, transl, some transp/opaq, shrp blk ang shrds, and chrt wht lt tan off wht w/sli weath sli trip text edges, pp moldic por, tan brn stain, tr hvy brn stain, tr gas bubs on brk, sli odor, dull scatt UV, tr filmy SFO on brk.</p>			<p>4640 TVD</p> <p>chrt off wht wht, smokey gry shrp frsh opaq transl, shrp blk shrds, with fair weath sli trip edges, pp moldic por, vug por, tan lt brn stain, tr brn blk hvy stain, sli odor, tr gas & SSFO w/brkn, dull scatt UV, incr vis weath text, incr vis por and shows in 6000' sample</p>			<p>chrt lt gry lt smokey gry shrp frsh opaq transl, semi transp in prt, with sli weath slt trip gran crumbly text, pp moldic por, smallvug por, tan lt brn stain, tr drk brn stain, sli odor, dull scatt UV, filmy SFO on break, tr gas bubs</p>	
<p>4700' deg @ '8.0 az</p>	<p>4700' 91.2 deg @ 178.2 az</p>	<p>4699' 91.5 deg @ 178.7 az</p>	<p>4690</p>	<p>4698' 91.7 deg @ 179.2 az</p>		<p>4697' 91.7 deg @ 179.6 az</p>	<p>4696' 91.2 deg @ 179.6 az</p>
<p>h, blk veath por,</p>		<p>chrt off wht lt tan, tr lt smokey gry shrp frsh blk ang shrds, sub transl, some transp, w/sli weath sli trip text edges, pp moldic por, small vug por, tan lt brn stain, tr brn hvy stain, nodor, scatt UV, resume drilling sample pretty poor!</p>		<p>chrt off wht lt gry shrp frsh opaq, with chrt off wht lt gry w/weath gran sli trip text edges, pp moldic por, small vug por, tan brn stain, tr hvy brn stain sli odor, tr filmy SFO w/brkn, tr gas bubs, scatt UV</p>			<p>chrt off v prt, blk sli trip te hvy brn :</p>
			<p>4740</p>				

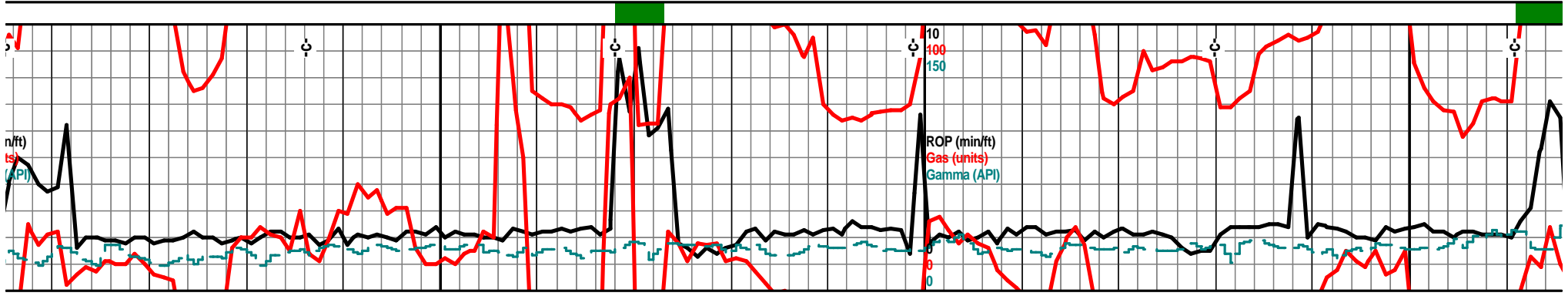


6100 6120 6140 6160 6180 6200 6220 6240

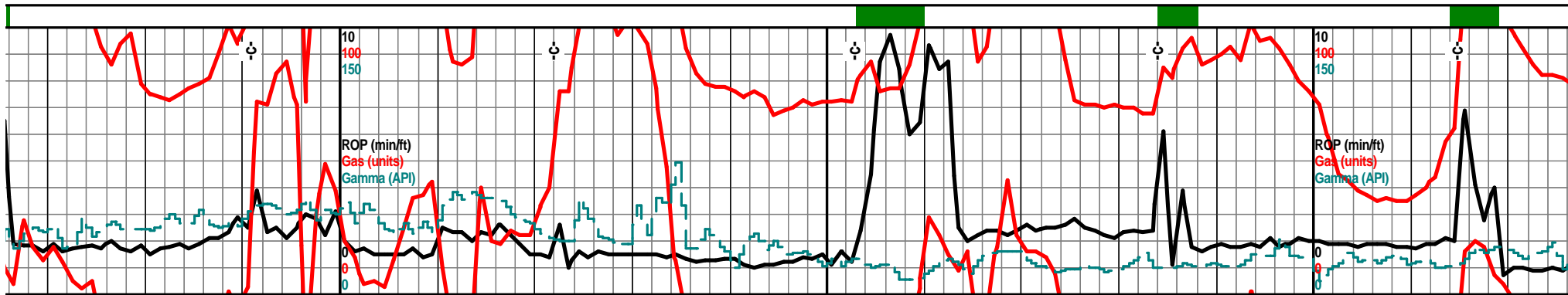
	4640 TVD						4640 TVD				
	chrt off wht lt gry lt smokey gry shrp frsh opa, transl, transp in prt, with tan brn stained sli weath, gran, sli trip text edges, pp moldic por, tan brn stain, VSSFO w/brkn tr gas bubs, sli odor, scatt dull UV			chrt off wht wht lt gry, lt smokey gry, shrp frsh opa, transl, transp in prt, shrp blk ang shards, chrt lt gry with gran weath sli trip text edges/sides, pp moldic por, tan brn stain tr hvy brn stain, sli odor, full scatt UV			Incr frsh chrt, less weath vis por, chrt off wh tan, shrp frsh opa, transl, msly transp, son opa, sharp blk ang shards, with chrt off w tan lt gry frsh shrp with sli weath gran edges moldic por, tan brn stain, tr hvy brn stain,				
		4696' 91.2 deg @ 179.4 az		4695' 91.2 deg @ 179.4 az		4694' 91.4 deg @ 179.6 az		4694' 90.3 deg @ 179.4 az		4694' 89.8 deg @ 190.1 az	
	4690										4690
wht lt gry shrp frsh opa, transl, transp in ang shrds, with tan brn stained sli weath xt edges, ppp moldic por, tan brn stain tr stain sli odor, tr gas bubs, scatt dull UV			chrt off wht lt gry, smokey gry shrp frsh opa, transl, transp in trp, opa, shrp ang shrds, with weath sli trip text edges, pp moldic por, tan brn stain, sli odor, tr drk brn hvy stain, scatt UV			chrt wht off wht lt gry, lt smokey gry shrp frsh opa, transl, transp in prt, blk ang shrds and chrt lt gry smokey grey with weath sli trip gran edges/sides, pp moldic por, tan brn stain, tr hvy brn stain, filmy SFO, VSSFO w/brkn, tr gas dull scatt UV					
4740							4740				



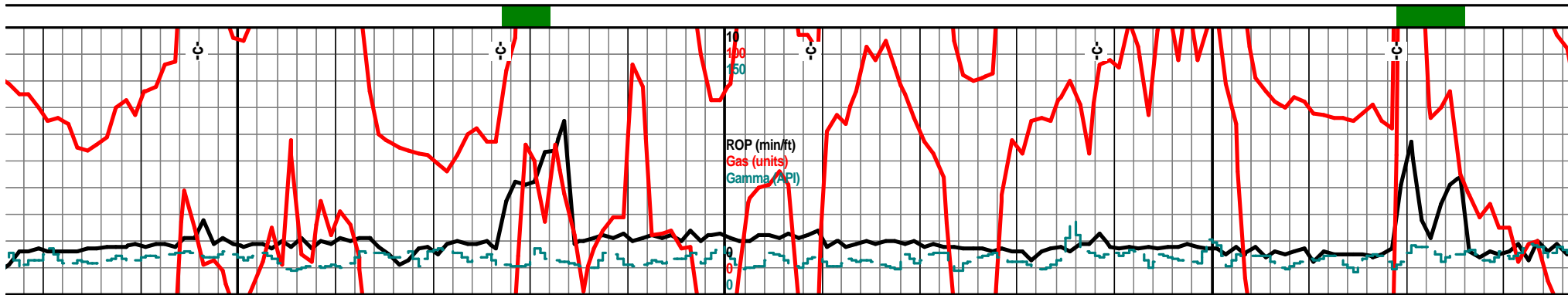
6260	6280	6300	6320	6340	6360	6380	6400
		4640 TVD		6350' 7 am May 9, 2013			4640 TVD
cht (mostly frsh), tan off wth lt tan shrp frsh opa, sub transl, transp in some, cht off wht tan with sli tr weath gran trip text edges, tan brn stain, tr hvy brn stain scatt rare UV, nodor in any of this				cht wht off wth, shrp frsh opa, blkly ang shrds, sub transl, cht crm tan brn mott weath gran crumbly, pp moldic por, inter gran por, tan lt brn stained, VSSFO on break, tr gas bubs, nodor, scatt dull UV, dolo in appearance			cht off wht lt tan shrp frsh opa, blkly ang shrds, sub transl, tr transp in prt, with tr weath gran sli trip text edges, some tan brn stain, drk brn hvy stain, dull scatt UV
4694' 89.6 deg @ 180.5 az		4694' 89.5 deg @ 180.1 az	4694' 89.8 deg @ 180.1 az	4695' 90.0 deg @ 180.3 az		4694' 90.7 deg @ 180.1 az	4690'
cht off wht lt tan shrp frsh opa, blkly ang shrds, sub transl, tr transp in prt, with tr weath gran sli trip text edges, some tan brn stain, drk brn hvy stain, dull scatt UV		cht off wht lt tan lt gry/tan shrp frsh opa, blkly ang shrds, sub transl, tr transp in prt, tr weath gran tan brn stained sli trip text edges, tan brn stain, pp moldic por, tr hvy brn stain, no gas, nodor in any, mstly frsh cht		cht lt gry off wht some tan, shrp frsh opa, sub transl, transp in prt, cht tan crm brn mott weath gran crumbly text, dolo text in prt, glau, pp moldic inter gran por, tan brn stain, scatt dull UV, filmy SFO w/brkn, nodor,			
		4740					4740



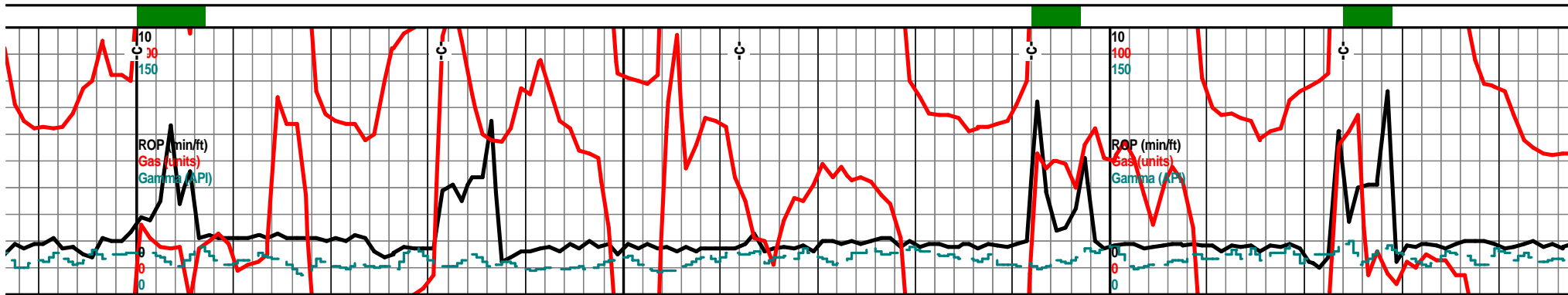
6420	6440	6460	6480	6500	6520	6540	6560	
Mud-Co. 6425' wt. 8.4 vis. 27 wl. NC chl. 600					4640 TVD			
gry, lt tan, shrp frsh opa, sub in prt, blk and shrds, chrt crm tan n stained sli weath gran sli trip text, , tan brn stain, nodor, tr gas w/brkn		chrt off wht lt gry shrp frsh opa, transl, transp in prt, shrp blk and shrds, with chrt lt tan. lt tan brn shrp frsh opa with weath gran some crumbly sli trip text, pp moldic por, lt tan lt brn stained, filmy SFO on brk, tr gas on break, dull scatt UV, poor live show			chrt lt gry wht shrp frsh opa, sub transl, tr transp, chrt crm tan lt brn gran weath crumbly trip text, pp moldic por as before, tan lt brn stain, scatt UV			
4694' 91.1 deg @ 180.1 az		4693' 90.9 deg @ 180.7 az			4693' 90.1 deg @ 180.1 az		4693' 89.6 deg @ 179.6 az	
chrt off wht lt gry, lt tan shrp frsh opa, sub trans, transp in prt, blk and shrds, chrt crm tan lt brn mott, with tan brn stained crumbly sli weath trip text, pp moldic por, tan brn stained, dull scatt UV, tr hvy brn stain, VSSFO/gas w/brkn				chrt gry tan fshr shrp opa as before, chrt off wht tan lt brn mott, weath gran semi soft crumbly sli trip text, pp moldic por, tan lt brn stain, filmy SFO w/brkn, tr gas w/brkn, nodor, scatt dull UV			chrt off wht incr frsh less weath opa, sub transl, tr transp in pr shards, tr with weath gran crur tan brn stain nodor, scatt dull l	
					4740			



6580		6600		6620		6640		6660		6680		6700		6720	
		4640 TVD								Bit Trip 6684' 7 am May 10, 2013 Mud-Co. wt. 8.4 vis. 27 wl. NC chl. 600 ppm		4640 TVD			
chrt wht off wht, tr cloudy, shrp frsh, gran in prt, chrt lt gry off wht shrp frsh opa, tansl, tr transp, tr weath gran tr crumbly text, glau, tr tan brn stain, tr yellow stain nodor, scatt UV poor shows				chrt wht off wht, mstly wht, frsh shrp blkly filky pcs, sub transl, mostly opa, with tr weath gran sli trip edges/sodes, ta lt brn stain, pp moldic por, smpl 90% wht filky barren chrt								chrt off wth lt gry, lt gry smokey in prt, shrp frsh opa, sub transl, some transp, chrt off wht tan lt brn stained, gran weath sli trip text, pp moldic por, tan brn stain, tr filmy RBSFO, dull scatt UV nodor in any			
4694' 88.4 deg @ 179.2 az		4694' 88.2 deg @ 178.7 az		4695' 88.6 deg @ 178.4 az		4696' 90.7 deg @ 178.5 az		4695' 90.8 deg @ 178.2 az							
h material, shrp frsh rt, blkly ang shrp nbly sli trip edges, UV				chrt off wth lt gry, lst smokey gry shrp frsh opa sub transl, some transp, chrt tan brn mott, weath sli trip crumbly text, pp moldic por, tan brn stain, filmy SFO on brk, scatt dull UV, odor?, incr por and show this spl				chrt lt gry clr, shrp frsh opa, sub transl, some transp, blkly ang shrds, chrt tan crm lt brn mott, tan brn stained gran crumbly sli weath sli trip text, pp moldic por, tan brn stain, scatt UV							
		4740										4740			



6740		6760		6780		6800		6820		6840		6860		6880	
4640 TVD															
				chrt off wht lt gry/wht shrp frsh opaq, sub transl, transp in prt, blkly ang shards, with tan lt brn weath sli gran sli trip text, pp moldic por, tan lt brn stain, dull scatt UV, nodor, NSFO or gas								chrt lt tan lt gry, lt smokey gray, shrp frsh opaq, sub transl, some transp, blkly ang shrds, chrt off wth lt gry tan, lt tan brn stained with weath gran crumbly text, tan brn stained, tr filmy SFO on brk, scatt UV, nodor			
4695' 90.6 deg @ 178.7 az		4695' 90.0 deg @ 178.5 az		4695' 89.1 deg @ 179.2 az		4695' 89.1 deg @ 179.2 az		4695' 88.6 deg @ 178.9 az		4695' 88.8 deg @ 178.9 az		4696' 88.8 deg @ 178.9 az		4697' 89.1 deg @ 179.2 az	
4690															
chrt lt gry lt gry smokey shrp frsh opaq, transl, some transp, chrt wht sli off wht frsh soft gran in prt, tr weath sli trip text, pp moldic por, tr vug por, tan brn stain, filmy SFO w/brkn, tr gas bubs, floaters, dull scatt UV								chrt off wht lt gry, vry lt smokey gry shrp frsh opaq transl, transp in most, with tan lt brn stained weath gran sli trip text edges/sides, tan brn stain, pp moldic por, inter gran por, dull scatt UV nodor in any				chrt lt gry lt smokey gry, off wht tan, shrp frsh opaq, sub transl, some transp, chrt off wht lt gry/brn, sli weath gran some sli trip text edges/sides, pp moldic por, tan lt brn stained, pp moldic por, nodor, tr scatt UV, tr filmy SFO on brk			
4740															



6900 6920 6940 6960 6980 7000 7020 7040

4640 TVD
 6 am 6931' Saturday May 11, 2013
 4640 TVD

tr lt smokey gry, shrp frsh blkly, sub transl, some transp, chrt gran weath vry sli trip text moldic por, tan lt brn stained, brk, dull scatt UV, nodor

chrt wht off wht some lt gry, lt smokey gry shrp frsh opa, transl, some transp, mstly chrt tan lt brn mott, weath gran sli trip text, pp moldic por, small vug por, tan brn stained, sli odor, tr filmy RBSFO on break, rare gas bub on brk, scatt spotted dull UV

chrt lt gry lt smokey gry shrp frsh opa, sub transl, some transp in prt, chrt tan lt brn mott, weath crumbly sil trip text, pp moldic por, inter gran por, tan lt brn stained, tr RBSFO on brk, tr gas on brk, nodor in any, dull scatt UV

4697' 89.8 deg @ 179.9 az
 4697' 90.3 deg @ 179.9 az
 4697' 89.7 deg @ 179.6 az
 4697' 89.1 deg @ 179.6 az
 4698' 88.8 deg @ 180.1 az

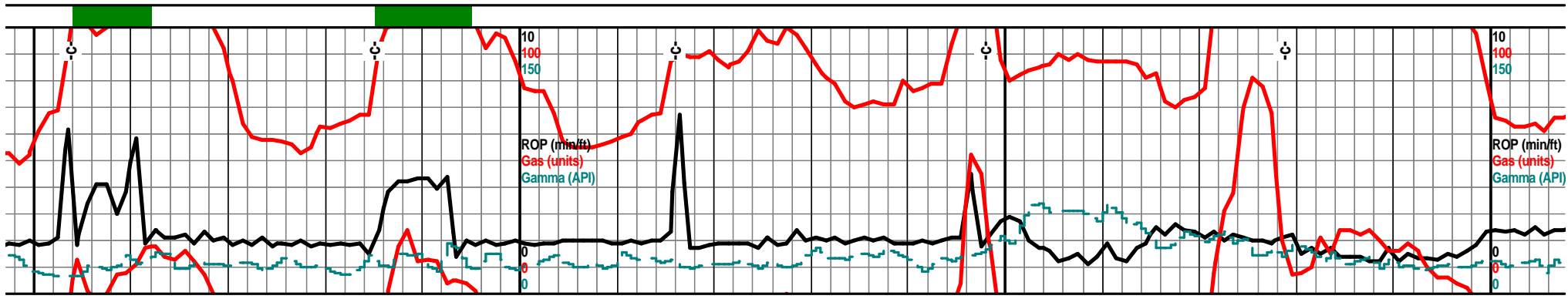


chrt lt gry lt smokey gry, off wht tan, shrp frsh opa, blkly ang frsh shrds, sub transl, some transp, chrt tan off wht lt brn, gran weath vry sli trip text edges/sides, pp moldic por tan lt brn stain, filmy RBSFO on brk, tr gas bubs, nodor in any, dull scatt UV

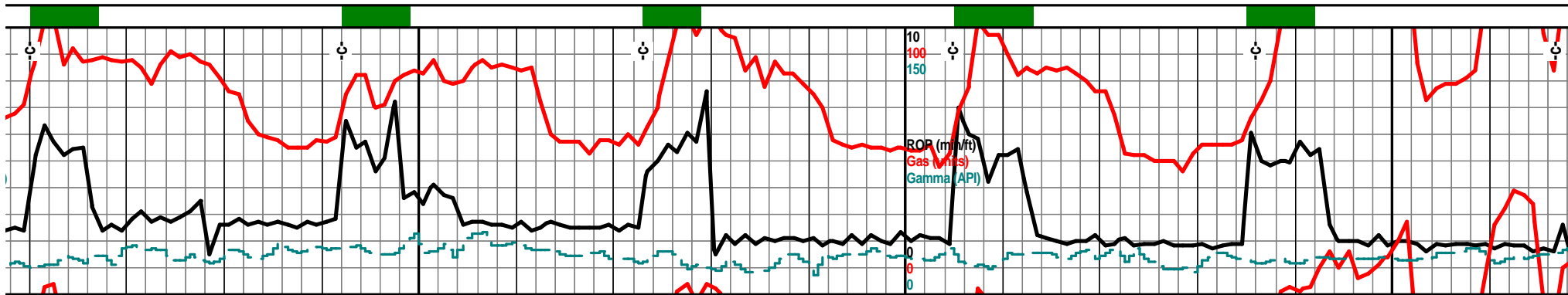
chrt off wht lt gry lt smokey gry, shrp frsh opa, chrt off wht tan lt brn mott, weath gran crumbly text, pp moldic por, tan lt brn stain, scatt UV, no real change

chrt lt gry lt smokey gry shrp fr transl, chrt tan lt brn weath gran moldic por, tan lt brn stained, s

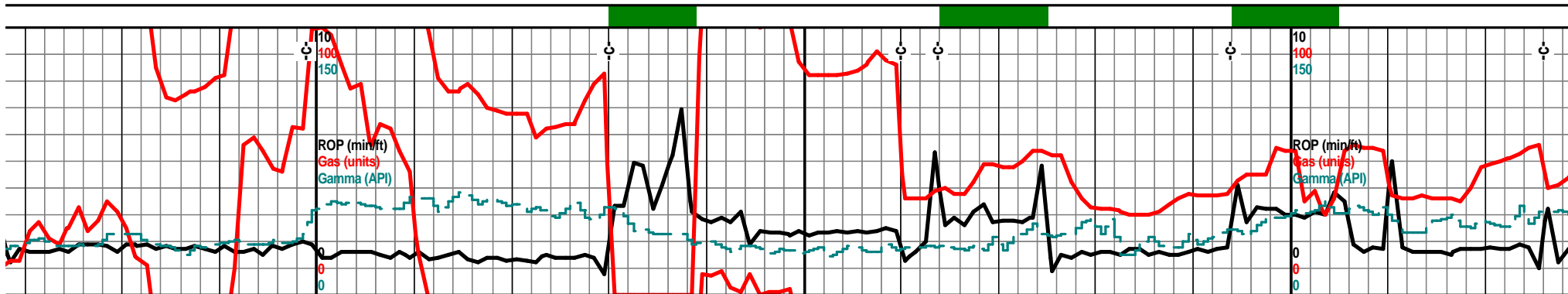
4740 4740



7060	7080	7100	7120	7140	7160	7180	7200	
Mud-Co. 7061' wt. 8.4 vis. 28 wl. NC chl. 600 ppm		4640 TVD					4640 TVD	
chrt off with wht, lt gry, lt smokey gry, shrp frsh blkly ang shards, sub transl, some transp, chrt wht off with tan lt brn with weath gran crumbly sli trip edge/side text, pp moldic por, tan brn stained edges, SRSFO on break, tr gas on break, nodor, dull scatt UV			chrt wht off wht lt gry shrp frsh blkly ang shrp shrds, transl, transp in some, chrt tan off with lt brn gran weath sli trip text, pp moldic por, inter gran por, tan lt brn stain sli odor?, dull scatt UV				chrt wht off with shrp shrp frsh opa, transl, some transp, blkly ang frsh shrds, tr with weath gran crumbly text, pp moldic or, tan lt brn stain, lst/dolo wht f xln, blkly ang chrtly pcs, acid=fizz, spl 90% this!	
	4698' 89.6 deg @ 180.8 az	4698' 91.0 deg @ 181.5 az		4697' 91.6 deg @ 181.0 az		4696' 92.5 deg @ 181.2 az	4695' 93.8 deg @ 181.4 az	
sh opa, transl, tr an sli trip text, ppp scatt UV			chrt off with lt gry lt gry smokey shrp frsh opa, tansl, transp in pr,t shrp blkly ang shrds, chrt tan lt brn gran weath crumbly text, pp moldic por, tan lt brn stain, tr filmy SSFO on brk tr gas on brk, nodor in any				4690	
		4740					4740	



7220	7240	7260	7280	7300	7320	7340	7360
				4640 TVD			
	chrt wht flky gran soft crumbly, calc, tr glau, chrt wht off wht, gran flky sli weath, pp moldic por, tr sli tan lt brn edge stain, lst tr dolo, wht f xln gran acid=fizz			chrt wht off wht lt gry shrp frsh opa, shrp frsh blkly ang shrds, sub transl, some transl, chrt wht off wht gran soft flky, sli weath gran sli trip text, pp moldic por, tan lt brn stain scatt UV, nodor in any, lst/dolo wht off wht f vf xln gran flky, tr glau			chrt off wht wht to transl, some transl, gran flky sli weath stained edges/side stain, dull scatt UV
		4691' 92.7 deg @ 180.8 az		4690' 91.9 deg @ 180.8 az	4689' 90.8 deg @ 180.8 az		4689' 90.0 deg @ 181.0 az
	4693' 93.2 deg @ 180.4 az						
chrt wht, flky, gran, chiky soft, calc, chrt off wht lt gry shrp frsh opa ang blkly shrds, chrt crm tan lt brn mott, flky gran sli weath trip text, pp moldic por, tan lt brn stain, nodor or gas, dull scatt UV, incr frsh and weath chert in sample			chrt wht off wht semi frsh, opa, transl, tr transp in prt, flky gran, with chrt wht off wht gran sli weath sli trip text, tan lt brn stained edges, sides, pp moldic por, tan lt brn stain dull scatt UV, nodor in any, chrt lt gry, lt smokey gry shrp frsh opa, semi transl, some transp, blkly ang shrds		chrt off wht lt gry clr, shrp blkly ang opa, sub transl, some transp shards, chrt off wht lt tan, gran crumbly sli weath, sli trip text, pp moldic por, tan lt brn stain, dull scatt UV, nodor, lst/dolo wht off wht f xln gran flky tr glau		
				4740			



7380

7400

7420

7440

7460

7480

7500

7520

7400' 8 am/D
May 12, 2013

Bit Trip 7460'
7" Casing Parted

4640 TVD

clr, frsh blkly ang shrds, sub
p in prt, chrt wht off wht tan,
some sli trip text, tan lt brn
s, pp moldic por, tan lt brn
, nodor NSFO/Gas

chrt off wth, gry wht shrp frsh opa, transl, transp
in prt, filky gran slli weath text, tan lt brn stained
edges, pp moldic por, dull scatt UV, red, gry red
shls, tr gry green shls

chrt off wth lt gry lt smokey gry, shrp frsh opa,
tansl, some transp, milky, chrt tan off wth lt
tan/brn gran weath crumbly text, pp moldic por,
tan lt brn stained, scat dull UV nodor in any

4688'
92.0 deg @
181.0 az

4687'
92.7 deg @
180.8 az

4686'
92.2 deg @
180.7 az

4685'
90.2 deg @
180.8 az

4685'
88.8 deg @
180.3 az

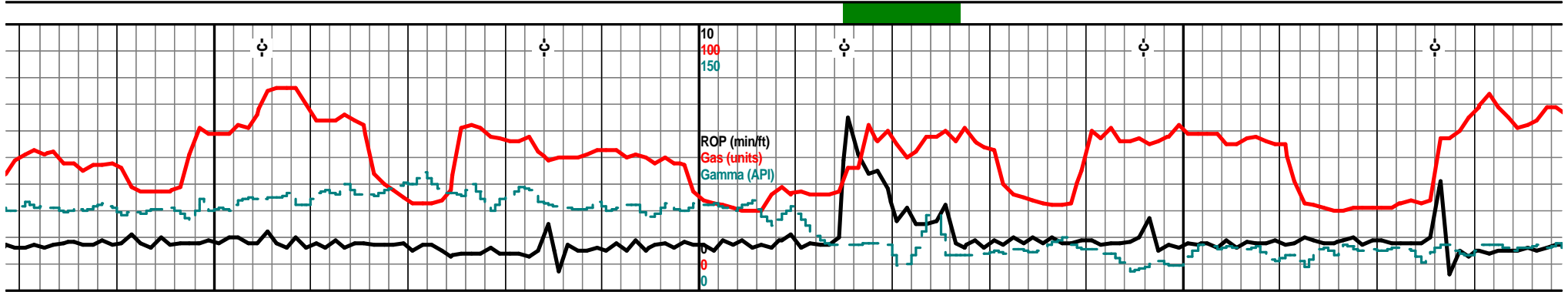
chrt off wht lt gry, shrp frsh opa, sub transl,
some transp in prt, filky gran text, sli weath text,
pp moldic por, tan lt brn stained,

chrt off wth lt gry, tr lt gry smokey, opa, transl,
some transp, chrt tan lt brn mott gran weath
crumbly text, tan lt brn stain, dull scatt UV, red
bed shls, smooth rded pcs, nodor in any

chrt wht off wht lt tan weath crumbly
moldic por, tan lt brn stain, sli odor
RBSFO on spl water, chrt lt gry lt sn
frsh opa, transl, tr transp in prt, blk

4740

4740



7540

7560

7580

7600

7620

7640

7660

7680

4640 TVD

chrt clr lt gry lt smokey shrp frsh opa q blk y shrds, transl, transp in prt, chrt wht off wht, limy, crumbly gran text, pp moldic por, tan lt brn stained edges/sides, scatt dull UV nodor, acid=no fizz

chrt off wht lt gry, lt smokey gry, clr, opa q, transl, mstly transp, blk y ang shrds, chrt off wht lt tan lt brn, gran weath crumbly text, pp moldic por, tan lt brn some brn stain, dull scatt UV, sli filmy RBSFO on brk, vry sli odor?

chrt clr, lt gry, lt smokey gry, shrp frsh opa q, transl, some transp in prt, blk y ang shrds, chrt off wht tan, lt brn, lt brn stained weath gran crumbly text, pp moldic por, tan brn stain, scatt dull UV nodor,

4686'
88.6 deg @
180.3 az

4686'
89.4 deg @
180.7 az

4686'
89.6 deg @
180.7 az

4687'
87.4 deg @
180.8 az

4689'
87.1 deg @
181.0 az

87



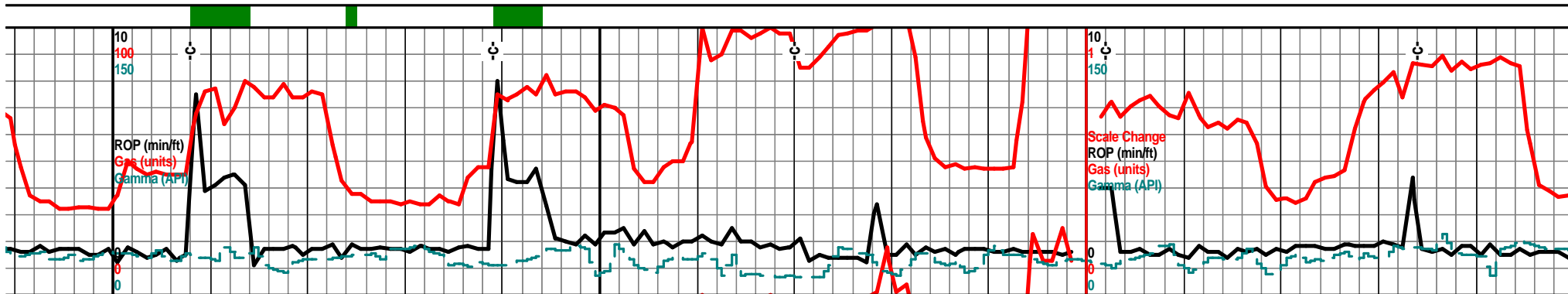
y gran text, pp
?, filmy
rokey try shrp
cy ang shrds

chrt off wht, clr, lt gry shrp frsh opa q, transl, transp, mstly chrt tan drk tan brn gran crumbly weath text, pp moldic por, tan drk brn stained, tr gas bubs, tr filmy SFO, scatt dull UV

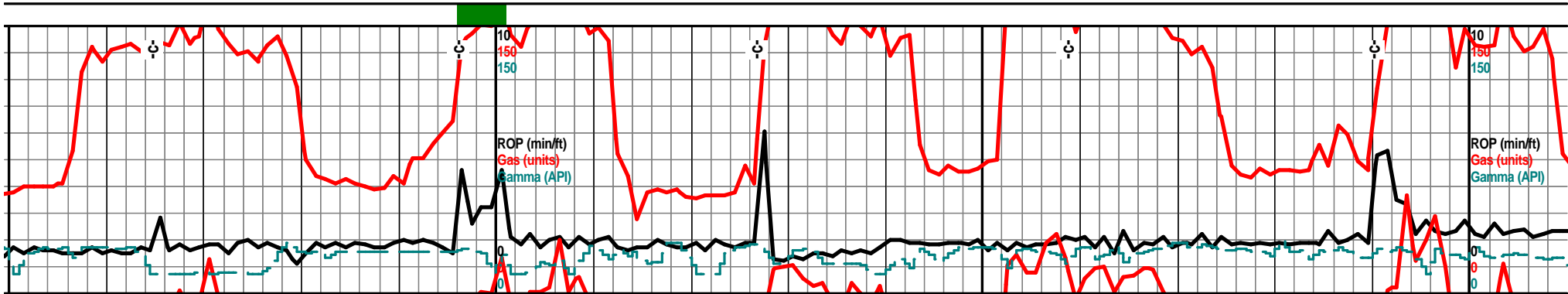
chrt off wht lt tan, lt tan brn, gran weath crumbly text, tan lt brn stained edges/sides, pp moldic por, tan brn stain, chrt lt gry clr transl, transp, dolo wht off wht f vf xln gran, chiky, sndy text,

cl
tr
w
c
R

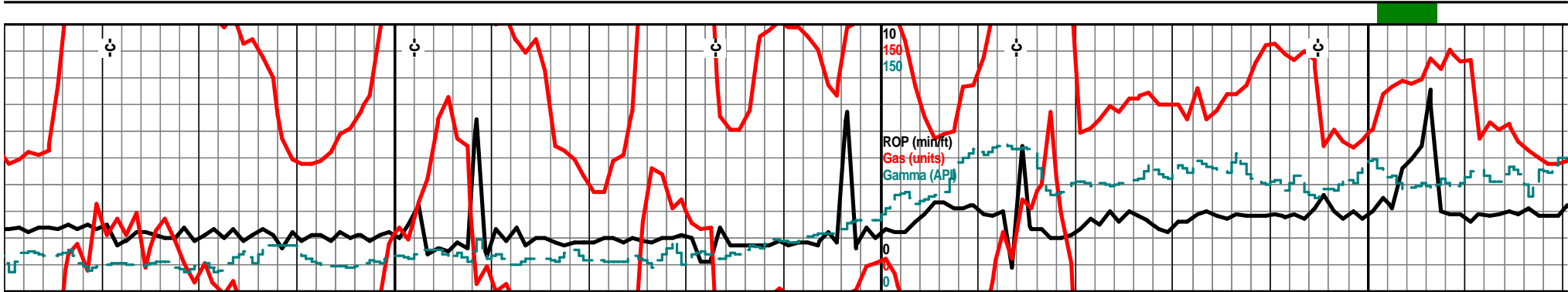
4740



7700	7720	7740	7760	7780	7800	7820	7840
4640 TVD					7 am 7800' May 15, 2013	4640 TVD	
	chrt clr lt gry vry lt smokey gry shrp frsh opa some transl, alot transp, shrp ang lky shrds, chrt off wht tan, tr lt brn mott, gran crumbly text, dolo in prt, tan lt brn stained edges/sides, scatt UV, dolo wht off wht f xln gran sndy text, chrt glau, inter xln por, with tan brn stained edges			chrt off wht lt gry, vry lt smokdy gry shrp frsh opaq, blk ang shrds, some transp, chrt off wht lt tan lt brn, weath gran some crumbly text, pp moldic por, tan lt brn stained edges/sides, some tan wht f v f xln glau dolo content, gran sndy text,			chrt off wht lt gry : transp in prt, blk brn gran weath cr glau in prt, chrt c gran por, tan lt brn
4690' 7.5 deg @ 180.8 az	4691' 88.8 deg @ 180.7 az		4692' 89.7 deg @ 180.1 az	4692' 89.8 deg @ 180.7 az	4692' 90.2 deg @ 180.3 az		4692' 90.1 deg @ 180.3 az
hrt lt gry off wht some clr, shrp frsh opa, transl, transp in prt, shrp blk ang shrds, and chrt off wht tan, lt brn, tan lt brn stained weath gran text, rumbly filky pcs, tan lt brn stained, tr filmy BSFO on brk, dull scatt UV			chrt off wht tan, lt brn, gran weath crumbly edges, tan brn stained edges/sides, pp moldic por, off wht f xln gran sndy dolo text in prt, chrt clr lt gry lt smokey gry shrp frsh opa, trans, mstly transp,		chrt off wht lt gry, clr, shrp frsh opa, transl in prt, mstly transp, blk ang shrds, dolo off wht tan f v f xln gran sndy text, tr glau, inter gran por, some crm tan lt brn stain, tr filmy SFO on break, scatt dull UV, sli odor?? acid=fizz, some chrt in prt, chrt inclu		
4740					4740		



7860	7880	7900	7920	7940	7960	7980	8000
		4640 TVD					4640 TVD
shrp frsh opa, transl, some ang shrds, chrt tan off wht lt umbly text, dolo f xln gran sndy :hrt inclu, pp moldic por, inter n stain scatt dull UV		chrt off wht lt smokey gry shrp frsh opa, transl, some transp in prt, shrp blk ang shrds, chrt off wht tan lt brn, gran weath crumbly edges, pp moldic por, tan lt brn staine edges/sides, tr dolo fill/content, tan off wht vf xln gran sndy text, glau, chrty, chrt inclu, scatt UV				chrt wht off wht lt gry in prt, shrp frsh opa, blk ang shrp shrds, transl, chrt tan crm lt brn gran weath crumbly text, pp moldic por, tan brn stain, dolo wht off wht tan f vf xln gran gritty sndy text, glau, chrty, chrt inclu, scatt dull UV nodor in any, poor shows continue!	
4692' 6 deg @ 10.3 az	4691' 90.5 deg @ 180.3 az	4691' 89.8 deg @ 180.1 az	4691' 90.0 deg @ 180.7 az	4691' 90.2 deg @ 180.5 az	4691' 90.0 deg @ 180.5 az	4691' 90.0 deg @ 179.6 az	
		4690				4690	
	chrt off wht lt gry, shrp frsh opa transl some transp in prt, shrp shards, chrt tan off wht crm lt brn, gran weath crumbly edge text, pp moldic por, tan lt brn stain, sli odor?, dolo fill, f vf xln gran sndy text, glau, chrty, w/chrt inclu, tan brn stain also, dull scatt UV		chrt wht off wht tan, lt gry, shrp frsh opa transl, transp in some, shrp ang shards, chrt tan lt brn off wht, gran weath sli trip text pp moldic por, tan lt brn/brn stain, scatt UV, some dolo fill, f xln gran sndy gritty text, glau, chrty, chrt inclu, tan brn stain, gas stain		chrt lt gry, tr lt smokey gry, shrp frsh o before, chrt off wht tan lt brn, gran weath text, pp moldic por, tan lt brn stain, dol some, tan off wht f xln gran soft gritty s		
		4740					4740



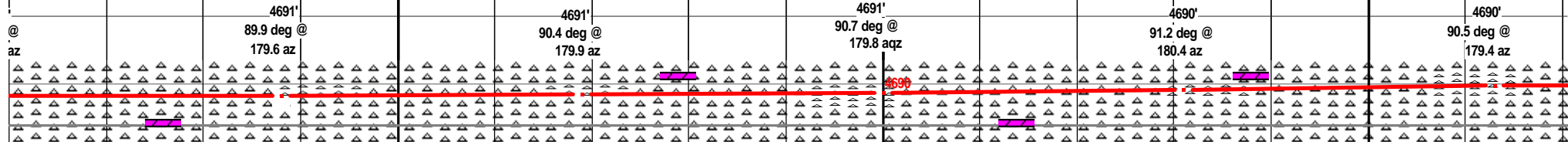
8020 8040 8060 8080 8100 8120 8140 8160

4640 TVD

chrt clr, wht off wht lt gry shrp frsh opaꝑ. sub
transl, mstly transp, blkꝑ ang shrds, chrt off wht lt
tan lt brn weath gran some crumbly sli trip text,
pp moldic por, tan lt brn stained edges, dolo crm
off wht f xln gran sndy gritty text, tr glau, chrtꝑ,
with chrt inclu

chrt off wth lt gry , shrp frsh opaꝑ, transp, blkꝑꝑ
ang shrds, chrt tan off wth lt brn, weath sli trip
gran text, dolo in prt tan off wht lt brn stained, f
xln gran sndy gritty text, chrtꝑ in prt, chrt inclu,
tan lt brn stain, nodor, scatt dull UV, acid=fizz

chrt wht, clear, off wht, tr lt gry shrp frsh opaꝑ,
transl in some, mstly transp, shrp blkꝑ ang shrds,
some dolo off wht lt green tint, f v f xln with sndy
gran text, tr glau, chrtꝑ, chrtꝑ aa with dolo edge



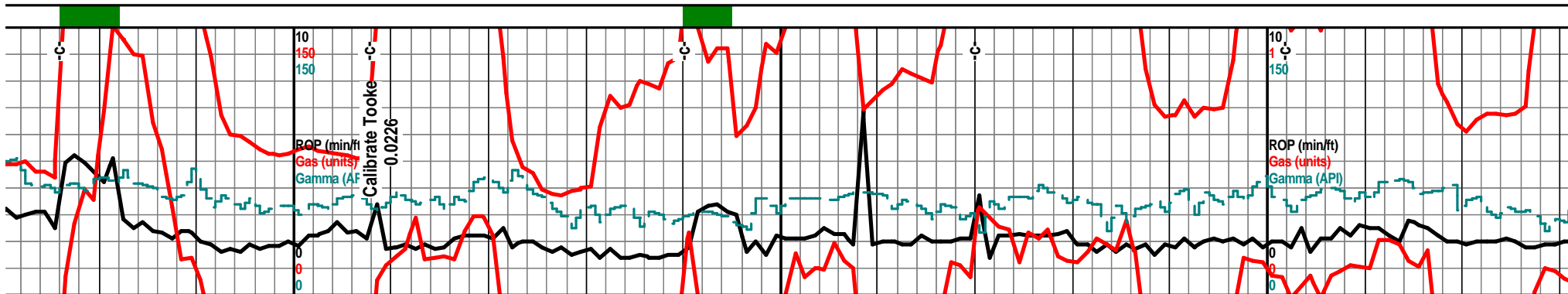
paꝑ as
th crumbly
lo fill in
sndy tr glau

chrt off wth lt gry shrp frsh opaꝑ, transl, transp in
prt, shrp blkꝑ shards, chrt tan off wht lt brn weath
gran crumbly text, dolo in prt, f xln gran gritty
sndy, glau, chrtꝑ, chrt inclu, tan lt brn stain

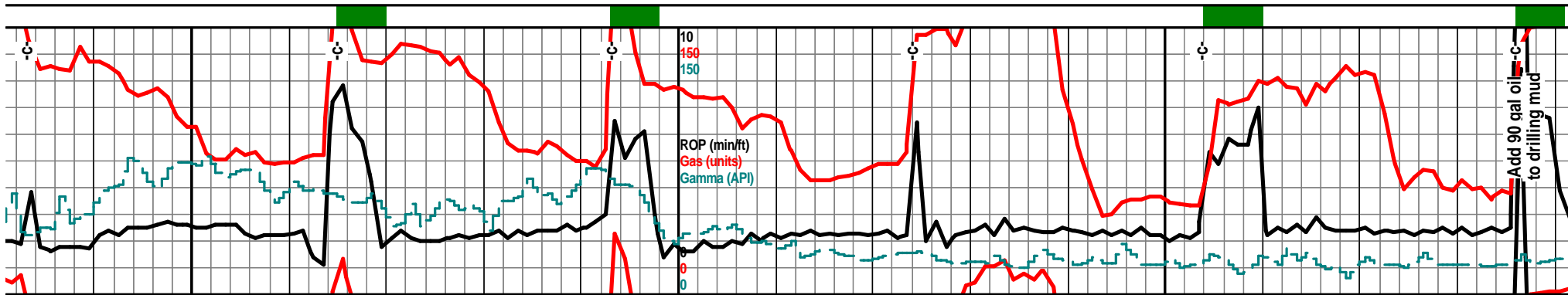
chrt off wht lt gry shrp frsh opaꝑ transp, transl as
before, chrt tan brn mott shrp frsh with weath
gran crumbly edge/sides, pp moldic por, tan brn
some drk brn stain, dull scatt UV, nodor NSFO in
any, dolo lt gry green, f v f xln gran gritty soft sub
chilꝑ

chrt
trans
off w
chrt i

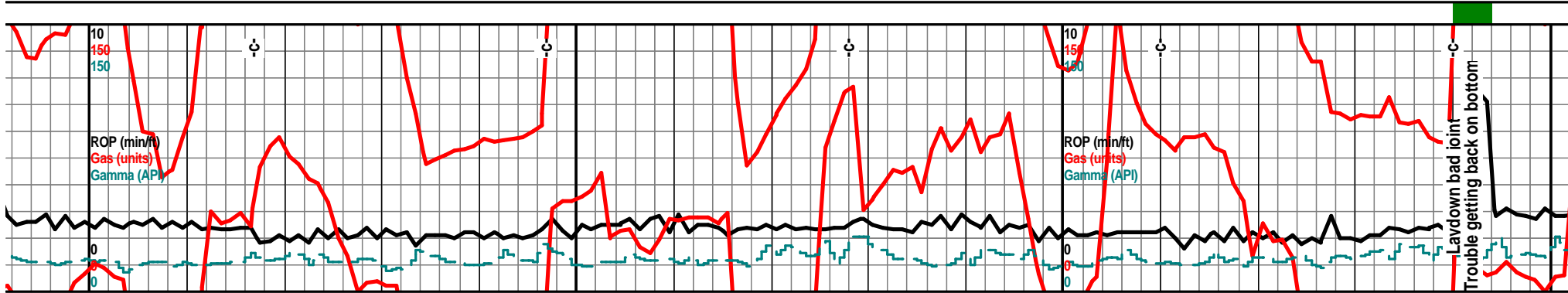
4740



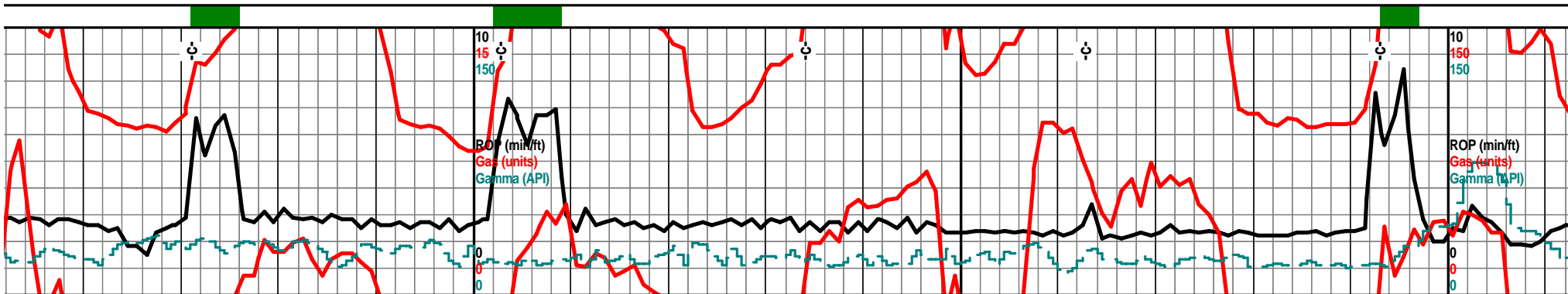
8180	8200	8220	8240	8260	8280	8300	8320
	4640 TVD					4640 TVD	
	Bit Trip 8208' 7 am May 17, 2013						
	chrt wht, clear, off wht, lt gry in prt, frsh opa, tansi, transp in some, shrp blkly ang shrds, dolo off wht, wht w/lt green tint, f vf xln gran, tr sndy text, tr glau, chrty. chrty aa with dolo edge, mstly barren, NS		chrt clr lt gry shrp frsh opa, semi transp, mstly chrt clr/brn and drk brn shrp frsh opa, sli weath text, drk tan drk brn stained, sli odor? tr gas on brk, some frac por,			chrt lt tan, mstly drk brn, frsh shrp blkly ang shrds, w/tr weath gran text, pp moldic por on sli weath edges, drk brn stained, nodor, NSFO, tr vis frac por, scatt dull UV	
	4690'	4690'	4690'	4691'	4691'	4691'	4691'
	89.9 deg @ 178.4 az	89.9 deg @ 178.5 az	88.8 deg @ 178.0 az	88.8 deg @ 177.7 az	88.8 deg @ 177.7 az	88.8 deg @ 177.7 az	88.8 deg @ 177.7 az
wht, clear, off wht, lt gry, shrp frsh opa, sl, mstly transp, blkly ang shrds, some dolo wht lt green tint, f vf xln gran chrty sndy text, inclu, mstly barren, NS		chrt off wht lt gry shrp frsh opa, some drk brn shrp frsh opa semi transp, drk brn stain, shrp blkly ang pcs, dolo crm tan lt green tint, f vf xln gran sndy gritty glau, chrty, some chrt inclu, spl valid?		chrt lt gry/clr shrp frsh opa sub transl, mstly chrt drk brn shrp frsh, sub opa, blkly sharp shrds, drk brn stained, tr weath edge, some pp por tr frac por? dolo off wht crm lt green tint, f vf lxn gran sndy gritty, tr glau, chrty in prt, tr chrt inclu			chrt c weatl shar gry s dolo glau
	4740					4740	



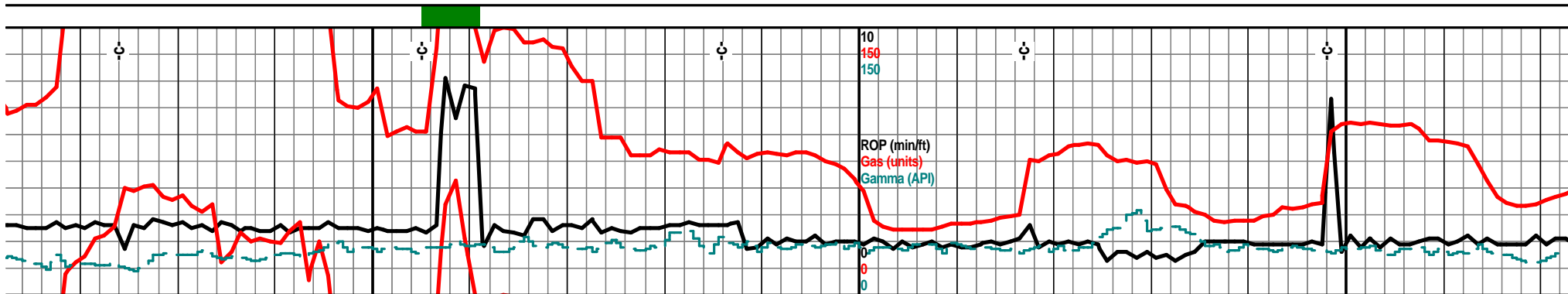
8340	8360	8380	8400	8420	8440	8460	8480
			4640 TVD	6 am 8420' May 18, 2013			Mud-Co. 8485' wt. 8.4+ vis. 27 wl. NC chl. 900 ppm "Bortz" Report
	chrt drk tan drk brn shrp frsh wth drk brn stain as before decreasing, incr chrt off wht, wht, vry lt gry shrp frsh w/gran weath crmbly text, pp moldic por, tr stain, overall show dec, dolo off wht lt tan f vf xln gran soft, tr sndy text, chrty in some, tr chrt inclu, chrt aa w/gran dolo edge			drk brn chrt as before, chrt tan off wht shrp frsh opa, sub transl, tr weath gran edge, crumbly text, tan brn stain, dolo off wht tan f vf xln blkly ang some sndy text, chrty, tan lt brn chrt inclu, tan lt brn stain. nodor, scatt UV			chrt lt gry off wht tr opa, transl, with tr tan brn stain, sli odo gran weath text, tr dr gran gritty glau, sc
	4692' 88.7 deg @ 177.5 az	4693' 88.6 deg @ 178.2 az	4693' 88.9 deg @ 177.8 az	4694' 89.5 deg @ 178.0 az	4694' 89.1 deg @ 179.2 az		
drk tan brn shrp frsh opa, sub transl, w/sli h edge, pp moldic por, mstly frsh shrp blkly ds, drk tan drk brn stain, frac por? chrt clr lt hrp frsh semi transl, some transp frsh opa, off wht lt green tint, f vf xln, gran gritty sli			chrt lt brn/drk brn shrp frsh opa, semi transp in prt, shrp blkly ang shrds, with tr weath gran edge, pp por, some frac por?, drk brn stained, nodor NSFO, chrt off wht clr shrp frsh opa transp, some dolo off wht, green tinted, f vf xln gran sndy text, tr glau, arg		chrt off wth lt gry, frsh shrp blkly ang pcs with sli weath vry sli trip text edges, pp moldic por, tan lt brn stain, nodor, dull scatt UV, some with tan lt brn dolo edge, f vf xln gran gritty chrty, tan lt gry chrt inclu, some lt tan/brn stain here also		
			4740				



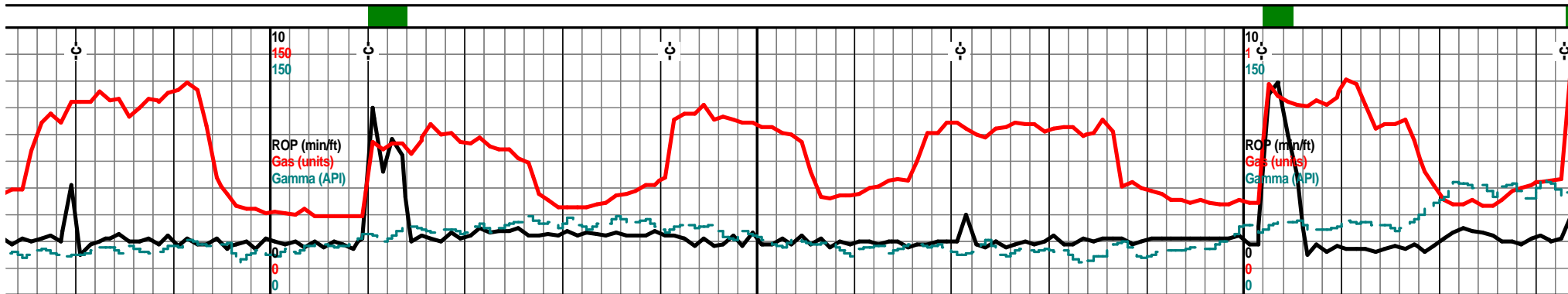
8500	8520	8540	8560	8580	8600	8620	8640
4640 TVD					4640 TVD		
tan lt brn mott, frsh shrp weath gran sli trip text edges, r??, chrt wht off wth frsh dolo in prt, tan off wht crm f xln lt dull UV		chrt off wht tan lt brn mott, frsh with sli weath gran edges, pp moldic por, tan brn stain, sli odor? scatt UV, chrt wht tan brn mott, gran crumbly sli weath text, tr frsh shrp opaq lt gry blkly with weath gran crumbly edges,			chrt off wht lt gry, lt smokey gry, frsh opaq, with tan lt brn stained, sli weath text edges, tan brn stain, pp moldic por, chrt tan lt brn frsh and sli weath gran crumbly text, pp moldic por, tan lt brn stained, tr dull UV, nodor in any		
4695' 88.9 deg @ 179.6 az	4695' 89.2 deg @ 180.1 az		4696' 89.5 deg @ 179.6 az		4696' 90.2 deg @ 179.6 az	4695' 90.7 deg @ 179.9 az	
4696'					4696'		
chrt off wht lt tan/brn, some lt gry mott, frsh shrp blkly ang with sli weath gran sli trip text edges, some pp moldic por, tan brn stain, sli odor, chrt tan lt gry/brn with dolo edges/fill f vf xln gran gritty glau, sli scatt UV in most poor rx			chrt crm tan lt brn mott, sli weath text, gran crumbly text, pp moldic por, tan brn stain, chrt off wht gry shrp frsh opaq with weath gran sli trip text edges, pp moldic por, tan brn stain scatt dull UV nodor or live show			chrt off wht tan lt brn frsh shrp opaq tr weath gran crumbly text edges/sides, por, tan lt brn stain, chrt off wht shrp fi with weath gran dolo fill, tan f vf xln gran stain	
4740					4740		



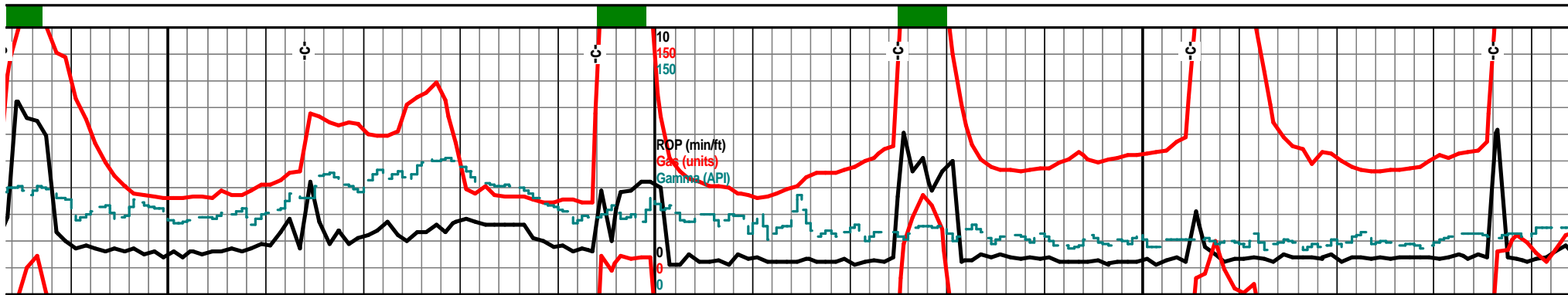
8660	8680	8700	8720	8740	8760	8780	8800
		4640 TVD			8763' 7 am May 19, 2013		4640 TVD
chrt off wht, tan lt brn mott, weath gran crumbly text, pp moldic por, tan lt brn stained edges, chrt lt gry shrp frsh with weather gran edge, pp moldic por,			chrt crm tan lt brn mott, some gry shrp opaqq with tan lt brn mott edges, weath gran crumbly text in most, tan brn stained weath edges, pp moldic por, nodor, NSFO, scatt dull UV, chrt wht off wht lt gry shrp frsh opaqq, sub transl, transp in prt			chrt lt gry, lt smokey gry shrp frsh opaqq, with tan lt brn sli weath gran text edges, tan brn stain, pp moldic por, chrt off wht lt gry shrp frsh sub transl, some transp, some dolo, wht lt green tint, f vf xln gran gritty, some sndy text, tr glau	
4695' 90.5 deg @ 179.6 az	4695' 89.9 deg @ 179.4 az	4695' 89.9 deg @ 179.4 az	4695' 88.5 deg @ 179.1 az	4696' 88.4 deg @ 178.7 az	4697' 89.1 deg @ 178.7 az	4697' 89.1 deg @ 178.7 az	4697' 89.4 deg @ 178.9 az
ansl with pp moldic rsh opaqq an gritty			chrt crm tan lt brn mott, some gry shrp opaqq with tan lt brn mott edges, weath gran crumbly text in most, tan brn stained weath edges, pp moldic por, nodor, NSFO, scatt dull UV, chrt wht off wht lt gry, shrp frsh opaqq sub transl, transp in prt.			chrt crm tan lt brn mott, some gry shrp opaqq with tan lt brn mott edges, weath gran crumbly text in most, tan brn stained sli weath edge text, pp moldic por, nodor, NSFO in any, scatt dull UV, chrt wht off wht lt gry, shrp frsh opaqq, sub transl, transp in prt, poor shows!	
		4740					4740



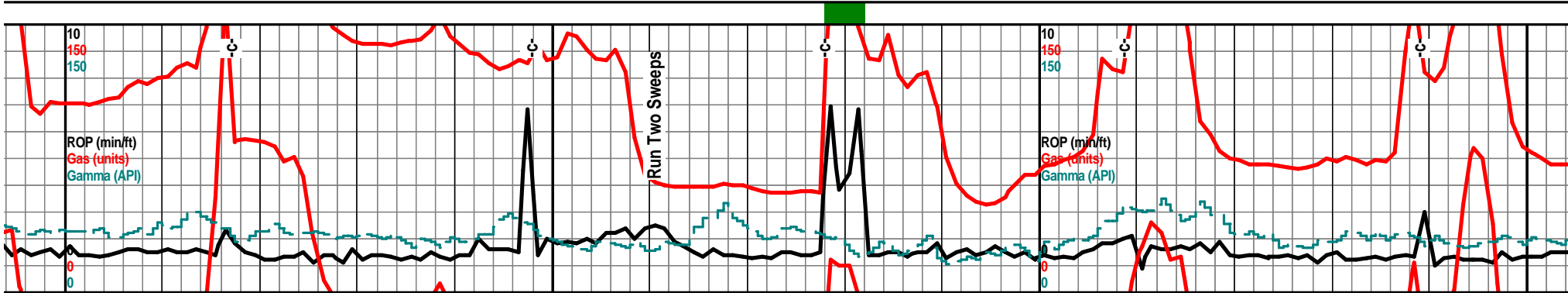
8820	8840	8860	8880	8900	8920	8940	8960
		Mud-Co. 8855' wt. 8.5 vis. 28 wl. NC chl. 800 ppm		Bit Trip 8886' 7 am May 20, 2013	4640 TVD		
		chrt crm tan lt brn, weath gran crumbly text, pp moldic por, tan brn stained, nodor, NSFO, scatt dull UV, chrt lt smokey gry shrp frsh opa sub transl with weath gran crumbly edge aa, tan brn stained, scatt UV				chrt crm tan lt brn mott, weath gran crumbly text, pp moldic por, tan brn stained edges, nodor, NSFO, scatt UV, chrt smokey gry shrp frsh opa sub transl with tan brn weath mott edge aa	chrt off wht tan crm lt brn r crumbly text, pp moldic por chrt lt smokey gry shrp frsh tan brn weath gran crumbly moldic por tan brn stain dul
	4697' 89.9 deg @ 178.7 az		4697' 90.1 deg @ 179.6 az	4697' 90.3 deg @ 179.6 az		4697' 90.8 deg @ 179.4 az	4697' 91.2 deg @ 179.4 az
		lt gry tan brn mott, gry shrp frsh opa sub sl with tan brn sli weath gran crumbly edge pp moldic por, tan/brn/drk brn stain, nodor, off wht lt tan, tr lt green tint, f vf xln gran y text, tr glau, acid=fizz		chrt crm tan lt brn mott, weath gran crumbly text, pp moldic por, tan brn stained edges sides, nodor, NSFO, scatt dull UV, chrt lt smokey gry shrp frsh opa sub transl with sli weath gran crumbly edges, tan brn stain,		chrt crm tan lt brn mott, weath gran crumbly text, pp moldic por, tan brn stained edges/sides, chrt lt gry smokey gry shrp frsh opa sub transl with weath gran tan brn mott edges/sides, nodor, NSFO, scatt dull UV	
				4740			



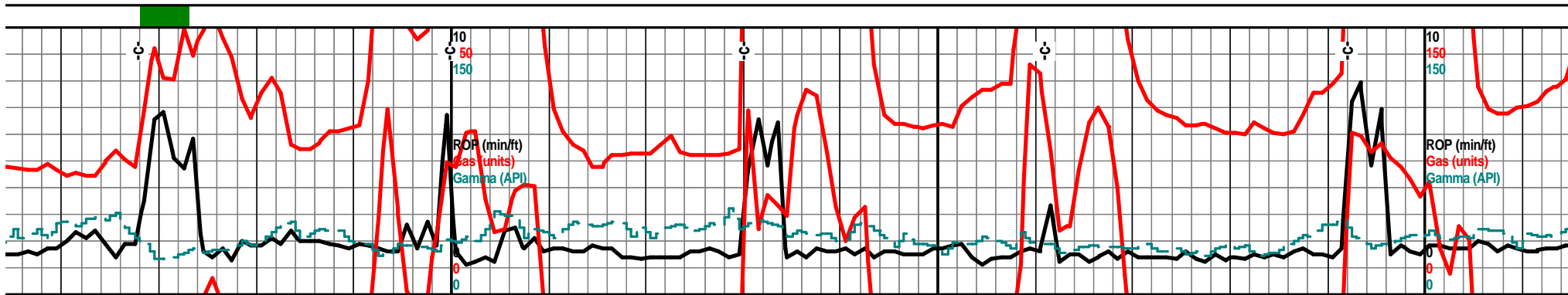
8980	9000	9020	9040	9060	9080	9100	9120
	4640 TVD					4640 TVD	
chrt off wht sli weath gran tan brn stain, nodor, opaq sub transl, with text edges/sides, pp scatt UV nodor		chrt lt gry, smokey gry shrp frsh opa, sub transl, some transp, shrp blk ang shard, chrt lt gry smokey shrp frsh opa with tan lt brn brn sli weath gran crumbly edges, pp moldic por, tan lt brn stain, nodor, NSFO, tr scatt UV			chrt off wht lt gry lt smokey gry, shrp frsh opa, sub transl, tr transp in prt, blk ang shrds, chrt same with sli weath text, gran crumbly text, pp moldic por, tan lt brn stained edges/sides, nodor, dull scatt UV		
	4696' 91.0 deg @ 179.4 az	4695' 90.9 deg @ 179.9 az	4695' 90.7 deg @ 179.4 az	4695' 90.9 deg @ 179.2 az	4694' 90.8 deg @ 179.9 az		
	4690				4690		
	chrt off wht lt gry smokey shrp frsh opa sub transl with tan brn crm sli weath gran crumbly text edges/sides, pp moldic por tan brn stain, dull scatt UV, tr lsd/dolo wht off with tan f vf xin blk ang gran pcs, tr glau, acid=fizz		chrt lt gry smokey, shrp frsh opa, sub transl, w/ tan lt brn sli weath text, gran crumbly text, pp moldic por, tan brn stained edges, weath sides, nodor, NSFO, dull scatt UV		chrt off wht lt gry lt smokey gry, shrp frsh of sub transl, some transp in prt, with sli weath gran, crumbly text edges/sides, pp moldic p dull scatt UV, tr lsd/dolo off wht, crm f vf xin lt sub chlky soft gran tr glau		
	4740				4740		



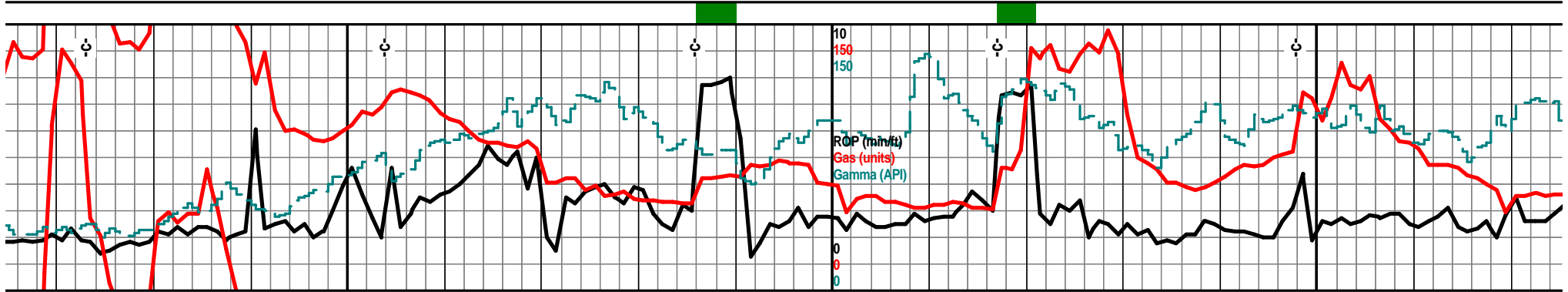
9140	9160	9180	9200	9220	9240	9260	9280
6 am 9155' May 21, 2013			Mud-Co. 9198' wt. 8.5 vis. 28 wl. NC chl. 800				
chrt incr frsh, clr off wht lt gry, smokey gry in prt, shrp frsh opaq, sub transl, transp in prt, blk ang shrp shrds, tan drk brn stained, NVP			chrt lt gry, lt smokey gry, shrp frsh opaq, sub transl, mstly transp, shrp ang blk shrds, spl90% frsh chrt, with some chrt aa with tan drk brn stain edges, poss frac por, tr weath gran edge text (rare), scatt UV nodor NSFO	chrt drk tan drk brn shrp frsh opaq, sub transl, transp in prt, shrp blk ang shrds, with tr weath gran sli trip text, tr pp moldic, frac por, drk tan brn stain, chrt lt gry to clr shrp frsh semi opaq, mstly transp, shrp frsh shrds			
4694' 90.6 deg @ 179.2 az			4693' 90.9 deg @ 179.8 az	4693' 90.1 deg @ 179.9 az	4693' 89.2 deg @ 180.7 az	4694' 89.2 deg @ 180.7 az	
chrt clr, lt gry, lt smokey gry, shrp frsh opaq, sub transl, mstly transp, mstly clr transp, blk ang shrp shrds, tr with tan drk brn stain, mostly NS			chrt drk tan brn shrp frsh. opaq, sub trans, transp in prt, shrp blk ang shrds, with tr weath gran edge (rare), drk tan to drk brn stained color, chrt lt gry to clr, shrp frsh semi opaq, transp in most, blk ang shrp shrds NS, no stain.		chrt vry trans, sh stain, ch vry sli w NSFO, s		
4740							



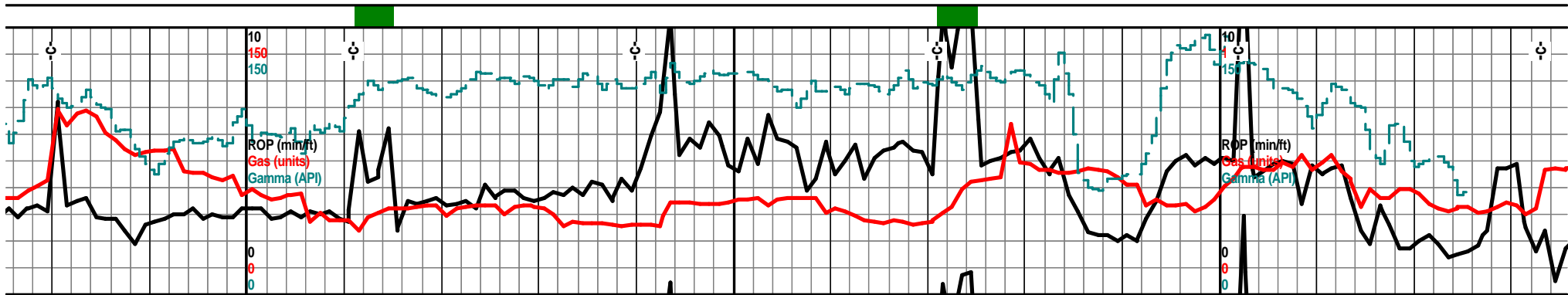
9300	9320	9340	9360	9380	9400	9420	9440
4640 TVD					4640 TVD		*** Live Show! **
	chrt vry lt gry/clr shrp frsh semi opa, mstly transp, shrp blk ang shrds, NS, chrt vry lt gry with drk tan/brn stained edges/sdies, shrp frsh opa, semi transp, msty vry drk brn stained frsh chrt			chrt v/lt gry to clr, frsh shrp semi opa to transp, shrp blk ang shrds, chrt lt gry with drk tan, brn in color, shrp frsh opa, sub transp, shrp blk shrds, drk tan brn stained			chrt off wht lt gry some cl trans, tr transp, shrp blk trn drk brn stained sli we moldic por, sli odor, hvy RBSFO, tr gas bubs
4694' 89.4 deg @ 180.7 az	4694' 90.1 deg @ 180.5 az	4694' 89.7 deg @ 180.3 az	4694' 89.6 deg @ 180.1 az	4695' 89.7 deg @ 179.8 az	4695' 89.9 deg @ 180.1 az		
4690				4690			
lt gry, clr, shrp frsh semi opa, mstly rp ang shrds with drk tan some drk brn rt aa mostly drk tan drk brn color, tr with eath text edge, drk brn stain, nodor, catt dull UV		chrt vry lt gry to clr, shrp frsh sub opa to transp, shrp blk ang shrds, mstly transp, chrt lt gry clr opa aa with drk tan to brn stained edges sides, shrp frsh,		chrt lt gry clr frsh frsh semi opa, shrp shrds, transp in most, chrt lt gry tan to drk brn, frsh shrp with tr weath gran edges, pp moldic por, drk tan brn stained, scatt dull UV, tr vhy blk grsy stain			
4740				4740			



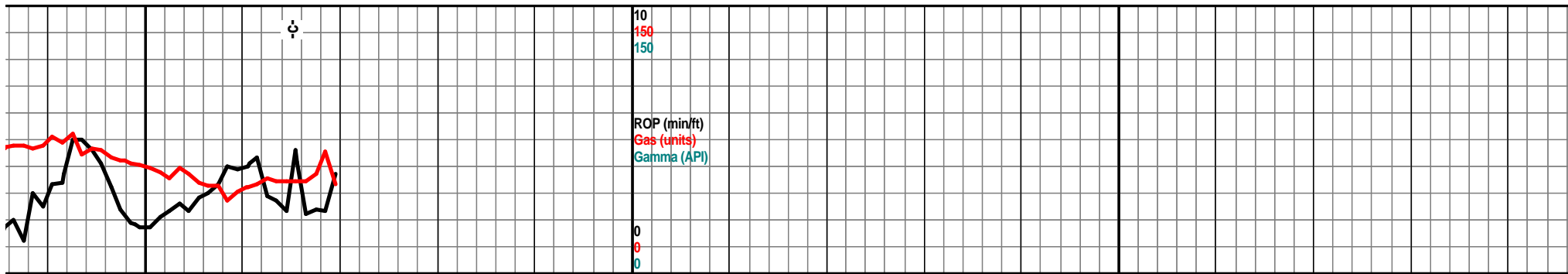
9460	9480	9500	9520	9540	9560	9580	9600
		4640 TVD					4640 TVD
<p>**</p> <p>lr, shrp frsh opa, sub / ang shrds, with some ath/gran edges/sides, pp grsy stain, tr filmy</p>		<p>chrt vry lt gry, clr, shrp frsh opa, transp, semi opa, shrp ang shrds, chrt vry lt gry with v sli weath gran text edges, mostly frsh, tan drk tan brn stain, mstly clr transp frsh chrt</p>		<p>chrt lt smokey gry, clr, shrp frsh semi opa, transl, msly transp, shrp frsh blk ang shrds, chrt lt gry smokey gry with drk tan, brn edges, tr weath gran text, pp moldic por, drk tan brn stain, nodor, tr hvy blk stain, scatt dull UV, incr wht off wht lst/dolo f vf xln soft gran sub chlky, tan brn stain</p>			
		4695'	4695'	4696'	4696'	4696'	4696'
		89.6 deg @ 180.7 az	89.6 deg @ 180.7 az	88.9 deg @ 180.5 az	89.1 deg @ 180.1 az	89.8 deg @ 180.1 az	
<p>chrt off wht, vry lt gry tint, shrp frsh semi opa, mstly transp, shrp ang shrds, chrt aa with tan drk brn edges, tr sli weath gran text edges/sides, pp moldic por, tan to drk stain, scatt dull UV, dead hvy grsy staid., odor?,</p>		<p>chrt, clr, vry lt smokey gry, shrp frsh semi opa, semi transl, mstly transp, blk ang shrds with drk tan brn tinted edges, tr sli weath/gran edge text, pp moldic por, drk tan drk brn stain, tr blk hvy grsy SFO</p>			<p>chrt lt gry, lt smokey gry shrp frsh opa, tran some transp, blk ang shrds, w/drk tan brn stained edges/sides, tr sli weath edge text, dc crm tan with gry/tan/brn mott frsh chrt edges/inclusions,</p>		
		4740					4740



9620	9640	9660	9680	9700	9720	9740	9760
6 am 9623' May 22, 2013				4640 TVD			
chrt off wht lt gry, lt smokey gry, shrp frsh semi opaq, some transl, tr transp in prt, w/sli weath gran edge text, pp moldic por in prt, tan drk tan brn stained edges/sides, chrty dolo, tan crm f vf xln dolo with tan brn stained dolo inclu		Bit Trip 9670' Mud-Co. wt. 8.5 vis. 29 wl. NC chl. 700 ppm		dolo lt gry, mstly gry green f vf xln gran glau, some soft mushy, some chrt inclu, chrt vry lt gry to clr, shrp frsh, transp, blk ang shrds		dolo lt gry, lt gry green, pale green, f vf xln gran, gritty, tr soft mushy in prt, tr inter xln por, tr glau, tr stain, chrt tan lt gry clr in prt, shrp frsh opaq, semi transl, transp in prt, tr sli weath gran sli trip edge, tan brn stain, tr hvly blk stain	
	4696' 89.9 deg @ 179.6 az	4697' 89.8 deg @ 179.2 az	4697' 90.3 deg @ 179.6 az	4690	4696' 90.7 deg @ 179.6 az	4696' 91.2 deg @ 179.9 az	
sl, dolo		chrt off wht lt gry, lt smokey gry, shrp frsh semi opaq, some transl, tr transp in prt, w/sli weath gran edge text, pp moldic por in prt, tan drk tan brn stained edges/sides, chrty dolo, tan crm, lt green, tr glau, f vf xln dolo with tan brn stained chrty inclu		dolo gry, gry green, green tinted, f vf xln blk ang pcs, gran text, tr soft mushy, tr glau chrt wht clr shrp frsh opaq to transp		dolo crm off gritty, glau, s stain, chrt lt g transl, some edges, pp mc	
				4740			

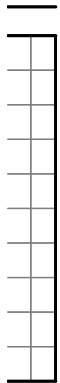


9780	9800	9820	9840	9860	9880	9900	9920
	4640 TVD					4640 TVD 9902' 7am May 24, 2013	
	dolo wht off wht lt gry/green, f vf xln gran blkly ang pcs, some chrty with wht gran/frsh chrt inclu, glau, tr tan stain, chrt off wht clr, shrp frsh sub opaq, transp in most, tr tan brn sli weath gran text edges, tan brn stained in prt			dolo off wht lt crn, lt gry/green f vf xln, gran, some soft mushy, mstly dns blkly ang pcs, glau, some off wht frsh chrt inclu, chrt off wht lt gry, wht, clr, shrp frsh opaq, semi transl, some transp, tr tan brn stain, nodor, NSFO			chrt off wht lt gry, mostly clr, s mostly transp, shrp blkly ang sli sli weath edge text, vry lt tan blkly ang pcs
	4695' 90.8 deg @ 179.2 az	4695' 91.1 deg @ 179.4 az	4694' 91.1 deg @ 178.9 az	4694' 91.1 deg @ 178.9 az	4693' 91.5 deg @ 179.1 az	4693' 91.5 deg @ 178.7 az	
gry, gry green, lt green, f vf xln, gran, some chrt inclu, tr inter xln por, tr brn gry, clr, shrp frsh, semi opaq, semi transp, with sli weath tan brn stained oldic por, tr hvy brn/blk stain		dolo wht off wht, lt gry/green, f vf xln dns hrd blkly pcs, tr glau, chrt wht off wht frsh/gran, blkly ang pcs tr glau, chrt wht off wht clr shrp frsh semi opaq, some transp, some with dolo edge			dolo, chrty dolo, off wht lt crn, lt gry/green, f vf xln gran blkly dns hrd pcs, tr glau in prt, off wht, wht chrt inclu, chrt off wht lt gry, some clr, semi transl, some transp, blkly ang frsh shrp shards.		
	4740					4740	



9940 9960 9980 10000 10020 10040 10060 10080

hrp frsh semi opa, hrds, tm lt tan vry rn stain, mstly frsh		chrt off wht lt gry vry lt smokey gry, mstly clr, shrp frsh semi opa, some transp, shrp frsh blk ang shrds, w/tr sli weath gran edge text, tr tan stain, tr hvy blk grsy stain, nodor,	4640 TVD	Woolsey Operating Company Michel #2 H 2170' FNL & 620' FWL Apx. NW SE SW NW Sec. 7 Twp 34S-Rge 11W Rhodes South Field Sec. 7 Twp 34S Rge 11W Barber County, Kansas API # 15-007-24014-01-00
	4691' 91.5 deg @ 178.7 az Projected to 9970'	4690		
chrt off wht lt gry vry lt smokey gry, mstly clr, shrp frsh opa, semi transl, some transp, shrp frsh blk ang shrds, w/tr sli weath gran edge text, tr tan brn stain, nodor, NSFO, no gas, scatt UV	4740			



101

