



**TRILOBITE  
TESTING, INC.**

# DRILL STEM TEST REPORT

Samuel Gary Jr & Associates

**11-15s-16w-Ellis**

1515 Wynkoop  
Suite 700  
Denver, CO. 80202  
ATTN: Chris Mitchell

**Legleiter #1-11**

Job Ticket: 52231

**DST#: 1**

Test Start: 2013.04.29 @ 20:38:01

## GENERAL INFORMATION:

Formation: **D**  
 Deviated: No Whipstock: 0.00 ft (KB)  
 Time Tool Opened: 22:28:31  
 Time Test Ended: 04:49:16  
 Interval: **3229.00 ft (KB) To 3247.00 ft (KB) (TVD)**  
 Total Depth: 3247.00 ft (KB) (TVD)  
 Hole Diameter: 7.80 inches Hole Condition:  
 Test Type: Conventional Bottom Hole (Initial)  
 Tester: Jason McLemore  
 Unit No: 54  
 Reference Elevations: 1935.00 ft (KB)  
 1925.00 ft (CF)  
 KB to GR/CF: 10.00 ft

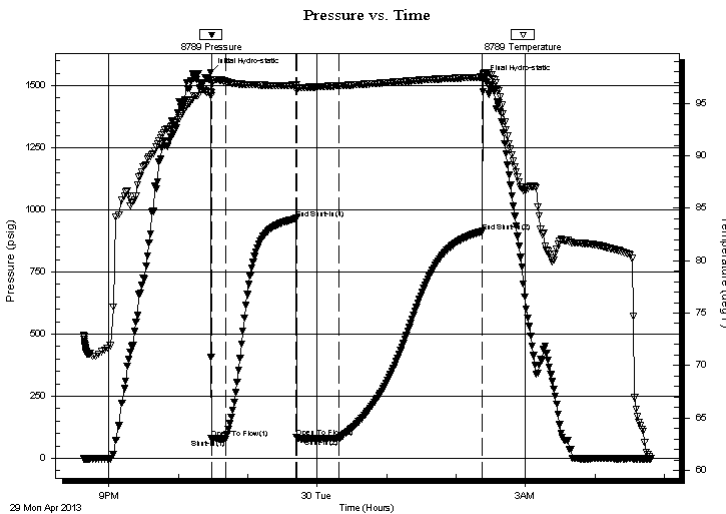
## Serial #: 8789

Inside

Press @ Run Depth: 80.28 psig @ 3231.00 ft (KB)  
 Start Date: 2013.04.29 End Date: 2013.04.30  
 Start Time: 20:38:03 End Time: 04:49:16  
 Capacity: 8000.00 psig  
 Last Calib.: 2013.04.30  
 Time On Btm: 2013.04.29 @ 22:28:01  
 Time Off Btm: 2013.04.30 @ 02:23:31

TEST COMMENT: IFP-8' Fill, Slid Tool 4" on Open, Dead  
 ISI-Dead  
 FFP-Weak Blow, Built to 1/2"  
 FSI-Dead

## PRESSURE SUMMARY



Time (Min.)	Pressure (psig)	Temp (deg F)	Annotation
0	1553.37	96.07	Initial Hydro-static
1	78.95	96.03	Open To Flow (1)
13	77.99	97.07	Shut-In(1)
74	965.46	96.74	End Shut-In(1)
74	84.18	96.25	Open To Flow (2)
111	80.28	96.67	Shut-In(2)
235	913.20	97.51	End Shut-In(2)
236	1523.94	97.84	Final Hydro-static

## Recovery

Length (ft)	Description	Volume (bbl)
130.00	SOCM-0%O-90%M	1.82

## Gas Rates

Choke (inches)	Pressure (psig)	Gas Rate (Mcf/d)





**TRILOBITE  
TESTING, INC.**

# DRILL STEM TEST REPORT

**FLUID SUMMARY**

Samuel Gary Jr & Associates

**11-15s-16w-Ellis**

1515 Wynkoop  
Suite 700  
Denver, CO. 80202  
ATTN: Chris Mitchell

**Legleiter #1-11**

Job Ticket: 52231

**DST#: 1**

Test Start: 2013.04.29 @ 20:38:01

## Mud and Cushion Information

Mud Type: Gel Chem

Cushion Type:

Oil API:

28 deg API

Mud Weight: 9.00 lb/gal

Cushion Length:

ft

Water Salinity:

ppm

Viscosity: 51.00 sec/qt

Cushion Volume:

bbbl

Water Loss: 7.20 in<sup>3</sup>

Gas Cushion Type:

Resistivity: ohm.m

Gas Cushion Pressure:

psig

Salinity: 4400.00 ppm

Filter Cake: inches

## Recovery Information

Recovery Table

Length ft	Description	Volume bbbl
130.00	SOCM-0%O-90%M	1.824

Total Length: 130.00 ft      Total Volume: 1.824 bbl

Num Fluid Samples: 0

Num Gas Bombs: 0

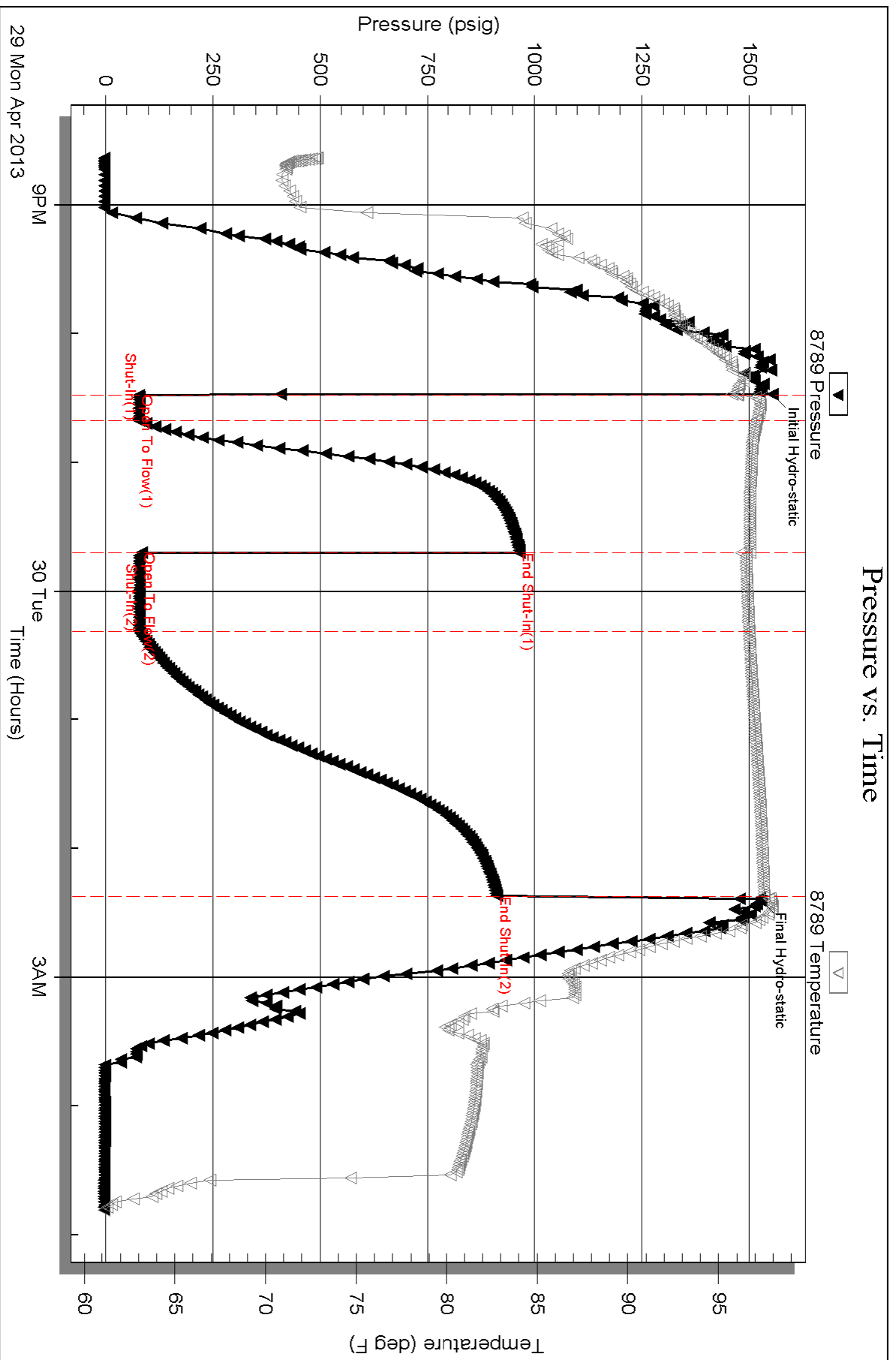
Serial #:

Laboratory Name:

Laboratory Location:

Recovery Comments: Sampler-50#,2000ml Oil,1000ml Mud

### Pressure vs. Time



Serial #: 8289

Fluid

Samuel Gary Jr & Associates

Legleiter #1-11

DST Test Number: 1

