



TRILOBITE TESTING, INC.

DRILL STEM TEST REPORT

Eternity Exploration LLC
 338 SpyGlass Dr
 Coppell Tx 75019 + 5430
 ATTN: Wyatt

7-10s-25w

Betty Werth #4

Job Ticket: 53856

DST#: 2

Test Start: 2013.06.01 @ 21:54:05

GENERAL INFORMATION:

Formation: **Lansing-E-F**

Deviated: No Whipstock: ft (KB)

Time Tool Opened: 23:38:05

Time Test Ended: 04:28:05

Test Type: Conventional Bottom Hole (Reset)

Tester: Jeff Brown

Unit No: 67

Interval: 3842.00 ft (KB) To 3888.00 ft (KB) (TVD)

Reference Elevations: 2533.00 ft (KB)

Total Depth: 3888.00 ft (KB) (TVD)

2528.00 ft (CF)

Hole Diameter: 7.88 inches Hole Condition: Good

KB to GR/CF: 5.00 ft

Serial #: 6625 Outside

Press @ Run Depth: 65.94 psig @ 3879.00 ft (KB)

Capacity: 8000.00 psig

Start Date: 2013.06.01

End Date: 2013.06.02

Last Calib.: 2013.06.02

Start Time: 21:54:06

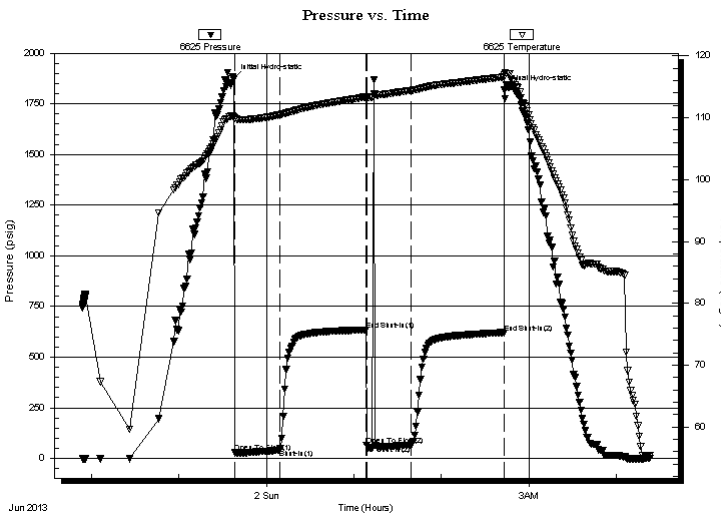
End Time: 04:23:05

Time On Btm: 2013.06.01 @ 23:37:35

Time Off Btm: 2013.06.02 @ 02:43:05

TEST COMMENT: IFP=Weak blow built to 3 in
 ISI=Dead no blow back
 FFP=Dead Flushed tool Weak surface blow built to 1 1/4 in
 FSI=Dead no blow back

PRESSURE SUMMARY



Time (Min.)	Pressure (psig)	Temp (deg F)	Annotation
0	1872.97	110.22	Initial Hydro-static
1	31.08	109.92	Open To Flow (1)
32	42.45	110.48	Shut-In(1)
91	634.48	113.35	End Shut-In(1)
91	66.07	113.22	Open To Flow (2)
122	65.94	114.41	Shut-In(2)
185	617.30	116.58	End Shut-In(2)
186	1821.05	116.92	Final Hydro-static

Recovery

Length (ft)	Description	Volume (bbl)
95.00	SOCM 5%O 95%M	0.47

Gas Rates

	Choke (inches)	Pressure (psig)	Gas Rate (Mcf/d)

* Recovery from multiple tests



**TRILOBITE
TESTING, INC.**

DRILL STEM TEST REPORT

FLUID SUMMARY

Eternity Exploration LLC
338 SpyGlass Dr
Coppell Tx 75019 + 5430
ATTN: Wyatt

7-10s-25w
Betty Werth #4
Job Ticket: 53856 **DST#: 2**
Test Start: 2013.06.01 @ 21:54:05

Mud and Cushion Information

Mud Type: Gel Chem	Cushion Type:	Oil API:	deg API
Mud Weight: 9.00 lb/gal	Cushion Length: ft	Water Salinity:	ppm
Viscosity: 54.00 sec/qt	Cushion Volume: bbl		
Water Loss: 6.40 in ³	Gas Cushion Type:		
Resistivity: ohm.m	Gas Cushion Pressure: psig		
Salinity: 2300.00 ppm			
Filter Cake: inches			

Recovery Information

Recovery Table

Length ft	Description	Volume bbl
95.00	SOCM 5%O 95%M	0.467

Total Length: 95.00 ft Total Volume: 0.467 bbl
Num Fluid Samples: 0 Num Gas Bombs: 0 Serial #:
Laboratory Name: Laboratory Location:
Recovery Comments:

