



TRILOBITE TESTING, INC.

DRILL STEM TEST REPORT

Eternity Exploration LLC
 338 SpyGlass Dr
 Coppell Tx 75019 + 5430
 ATTN: Wyatt

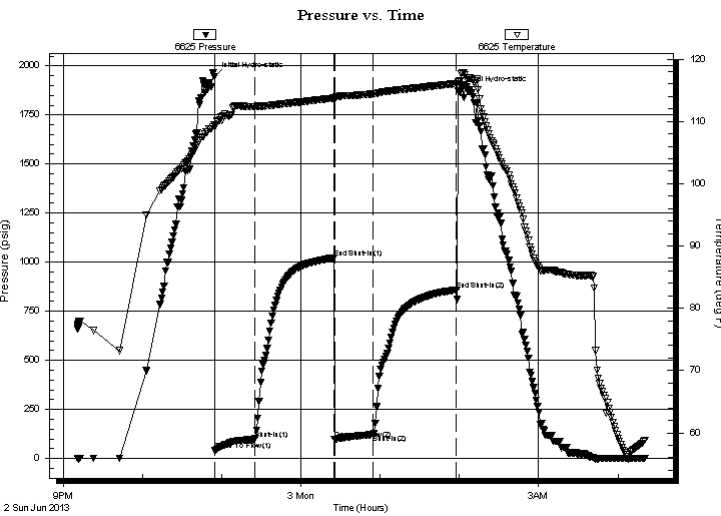
7-10s-25w
Betty Werth #4
 Job Ticket: 53858 **DST#: 4**
 Test Start: 2013.06.02 @ 21:10:44

GENERAL INFORMATION:

Formation: **Lansing-H-I**
 Deviated: No Whipstock: ft (KB)
 Time Tool Opened: 22:54:44
 Time Test Ended: 04:20:44
 Interval: **3906.00 ft (KB) To 3961.00 ft (KB) (TVD)**
 Total Depth: 3961.00 ft (KB) (TVD)
 Hole Diameter: 7.88 inches Hole Condition: Good
 Test Type: Conventional Bottom Hole (Reset)
 Tester: Jeff Brown
 Unit No: 67
 Reference Elevations: 2533.00 ft (KB)
 2528.00 ft (CF)
 KB to GR/CF: 5.00 ft

Serial #: 6625 Outside
 Press @ Run Depth: 122.79 psig @ 3942.00 ft (KB) Capacity: 8000.00 psig
 Start Date: 2013.06.02 End Date: 2013.06.03 Last Calib.: 2013.06.03
 Start Time: 21:10:45 End Time: 04:20:44 Time On Btm: 2013.06.02 @ 22:54:14
 Time Off Btm: 2013.06.03 @ 01:59:14

TEST COMMENT: IFP=Good blow BOB in 23 1/2 min
 ISI=Weak blow back built to 2 in died back to 1/2 in
 FFP=Good blow BOB in 10 min
 FSI=Weak blow back built to 2 in



PRESSURE SUMMARY

Time (Min.)	Pressure (psig)	Temp (deg F)	Annotation
0	1946.09	109.44	Initial Hydro-static
1	40.17	109.25	Open To Flow (1)
31	97.58	112.39	Shut-In(1)
91	1021.86	113.73	End Shut-In(1)
91	98.98	113.74	Open To Flow (2)
121	122.79	114.39	Shut-In(2)
184	859.62	116.06	End Shut-In(2)
185	1871.79	116.34	Final Hydro-static

Recovery

Length (ft)	Description	Volume (bbl)
60.00	SOCMW 5%O 40%M 55%W	0.30
60.00	SOCGWM 5%G 5%O 5%W 85%M	0.30
63.00	SOCGM 15%G 85%M	0.88
15.00	OCM 20%O 80%M	0.21
15.00	Gassy Oil 10%G 90%O	0.21
0.00	220-GIP	0.00

* Recovery from multiple tests

Gas Rates

Choke (inches)	Pressure (psig)	Gas Rate (Mcf/d)



**TRILOBITE
TESTING, INC.**

DRILL STEM TEST REPORT

FLUID SUMMARY

Eternity Exploration LLC
338 SpyGlass Dr
Coppell Tx 75019 + 5430
ATTN: Wyatt

7-10s-25w
Betty Werth #4
Job Ticket: 53858 **DST#: 4**
Test Start: 2013.06.02 @ 21:10:44

Mud and Cushion Information

Mud Type: Gel Chem	Cushion Type:	Oil API: 40 deg API
Mud Weight: 9.00 lb/gal	Cushion Length: ft	Water Salinity: ppm
Viscosity: 49.00 sec/qt	Cushion Volume: bbl	
Water Loss: 7.20 in ³	Gas Cushion Type:	
Resistivity: ohm.m	Gas Cushion Pressure: psig	
Salinity: 3100.00 ppm		
Filter Cake: inches		

Recovery Information

Recovery Table

Length ft	Description	Volume bbl
60.00	SOCMW 5%O 40%M 55%W	0.295
60.00	SOCGWM 5%G 5%O 5%W 85%M	0.295
63.00	SOCGM 15%G 85%M	0.884
15.00	OCM 20%O 80%M	0.210
15.00	Gassy Oil 10%G 90%O	0.210
0.00	220-GIP	0.000

Total Length: 213.00 ft Total Volume: 1.894 bbl
Num Fluid Samples: 0 Num Gas Bombs: 0 Serial #:
Laboratory Name: Laboratory Location:
Recovery Comments:

Pressure vs. Time

