

RTD & LTD	3870 - 1621	3870 - 1621	-1629	-1634	-1558	-1663
-----------	-------------	-------------	-------	-------	-------	-------

SUMMARY OF DAILY ACTIVITY

8-6-13 RU, spud @ 5:45 pm, drilling, set 8 5/8" surface pipe to 223 w/150 sxs common 2% gel, 3%CC, plug down, WOC 8 hrs

8-7-13 223', drilling

8-8-13 1173', drilling

8-9-13 2238' drilling, repair hole in pipe

8-10-13 2916' drilling, repair rotary table

8-11-13 3500' drilling, CFS @ 3510', CFS @ 3660' reached 3870' RTD at 7:10pm, Short trip.

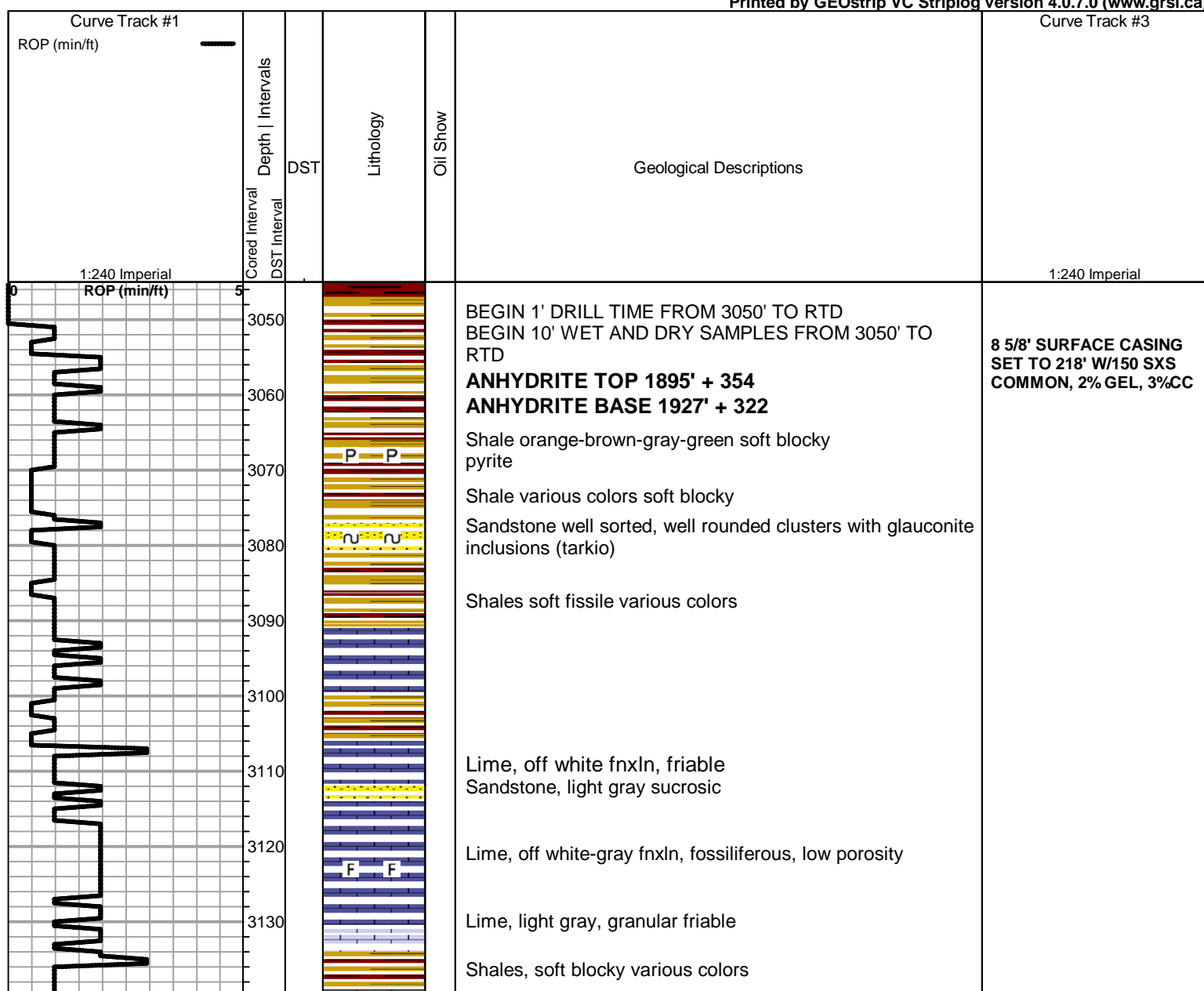
8-12-13 3870', Logging , P&A, rig down.

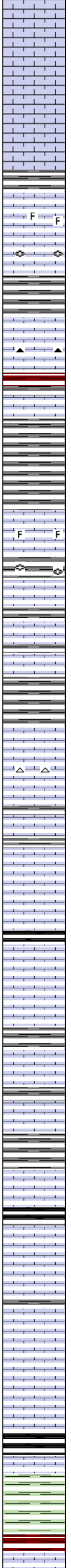
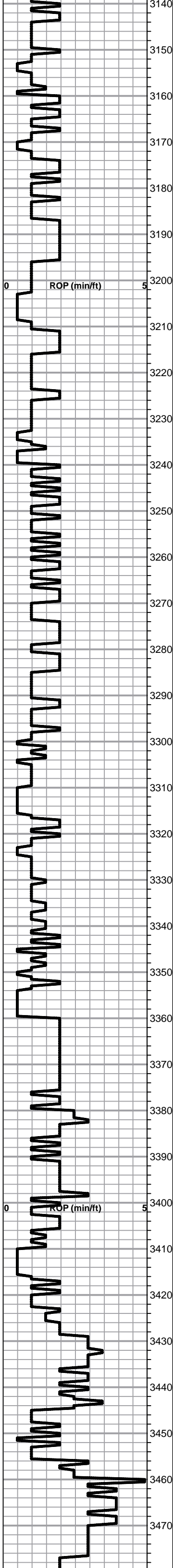
ROCK TYPES					
	Cht		Dol Lime		shale, grn
	Cht vari		Lmst fw<7		shale, gry
	Chtcongl		Lmst fw7>		Carbon Sh
	Dolprim		Lscongl		shale, red
					Shcol
					Ss
					Cht gy

ACCESSORIES	
MINERAL	FOSSIL
▲ Chert, dark	F Fossils < 20%
∩ Glauconite	⊕ Fossilinid
P Pyrite	
△ Chert White	

OTHER SYMBOLS
DST

Printed by GEOstrip VC Striplog version 4.0.7.0 (www.grsi.ca)





Lime, cream - off white fnxn

Lime, cream-light gray fnxn

Lime, light gray fnxn, brittle

Shale, light gray soft and blocky

Lime, medium gray, fossiliferous, dense, brittle

Lime, tan-light brown-gray fnxn, fusulinids

Shale, light-medium gray soft blocky

Lime, tan- light brown medium xln- granular, friable
light brown chert

Shale, medium brown- gray soft blocky

Shale, medium gray soft blocky

TOPEKA SAMPLE 3250 (-1001) LOG 3248 (-999)

Lime, off white-grayish, granular, fossiliferous, very friable

Shale, gray-brown soft blocky, fusulinids

Lime, gray/black speckled fn-medxn friable

Lime, light gray slightly oolitic fine intercrystalline porosity

Shale, gray-green soft blocky
Shale, medium gray soft sticky

Lime, light gray fnxn, dense
white chert
bedded chalk in part

Lime, cream fnxn, gray wash
Shale, soft sticky light gray

Lime, cream granular, chalky in part

Shale, black carbonaceous

Lime, cream-tan granular friable

Lime, cream medium xln soft chalky in part

Line, cream-light brown fn-medxn soft

Shale, brown fissile

Lime, cream-off white oolitic, not well developed

Shale, black carbonaceous

Lime, cream-light gray oolitic in part, NSFO, no odor

Shale, gray soft and sticky

Lime, cream-off white fnxn dense

HEEBNER SAMPLES 3452 (-1203) LOG 3449 (-1200)

Shale, black carbonaceous

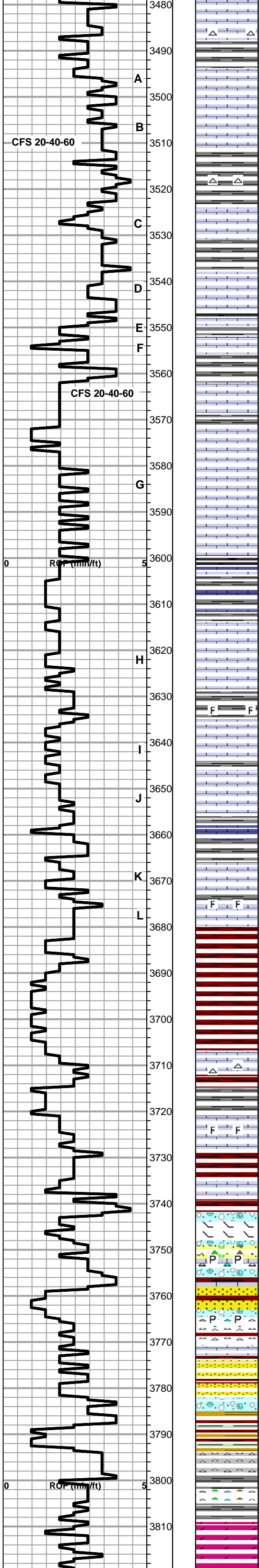
Shale, dove gray/green soft blocky

Shale, reddish brown soft blocky

TORONTO SAMPLES 3478 (-1229) LOG 3477 (-1228)

Rock sample quality very poor. Heavy shale carry over and carbonates are ground fine. Yield Point is 8.

Note: rop spike at 3460 was caused by change in weight on the bit.



Lime, cream-bright white fnxn dense white chert

LKC SAMPLES 3494 (-1245) LOG 3494 (-1245)

Lime, cream oolitic low porosity dense

Lime, cream-light brown fnxn

Lime, cream fnxn, white chert

○ Lime, cream-light brown, slight odor pinpoint porosity, slight scattered staining, NSFO

○ Lime, cream-light brown, slight staining, pinpoint porosity, scattered stain, sfo on crush in one chip.

○ Lime, cream-light brown, 1 chip saturated stain, slight odor, sfo, fossiliferous vuggy porosity in part, fluorescence.

Lime, cream-light brown fnxn, dense

Lime, cream fnxn, some with slight pinpoint porosity, no staining

Lime, cream fnxn clean dense

MUNCIE CREEK SPLS 3602 (-1353) LOG 3598 (-1353)
Shale, black/gray fissile

Lime, cream-tan fn-medxn friable

Lime, cream- off white fnxn dense

Shale, brown-gray soft blocky fossil inclusions

○ Lime, cream-light brown slight scattered stain, pinpoint porosity, NSFO, no odor

○ Lime, cream-tan slightly oolitic, slight vuggy porosity, slight staining, NSFO, no odor

Lime, cream fnxn slightly oolitic in part, scattered fine intercrystalline porosity, fossiliferous in some

BKC SAMPLES 3690 (-1441) LOG 3681 (-1432)

Shale, brown reddish soft blocky

Lime, cream- off white fn-vfxn dense, white chert

Lime, cream-tan fnxn, slightly oolitic, NSFO, fossiliferous

Lime, cream granular clean, NSFO

Reworked material, clastics, maroon shale, pyrite, various cherts

Sandstone, clusters quartz grains, calcite cement

Clastic Lime, tan vf-fnxn, pyrite inclusions chert hard white

Sandstone, medium brown clusters, well sorted, well rounded

Shales, various colors purple, maroon, green, gray, soft blocky

Chert, gray

Cherts various colors
Shale, gray soft blocky

ARBUCKLE SAMPLES 3826 (-1577) LOG 3810 (-1577)
Dolomite, cream fnxn

Rock samples continued to decline in quality throughout the well, various things were changed to correct this, with no success. Samples loaded with maroon and gray soft shale, carbonate sizes were very small. correlating samples proved to be very difficult.

