

ADVANTAGE ELEVATIONS

OIL FIELD SURVEYORS

BOX 8604 - PRATT, KS 67124
(620) 672-6491

87133

INVOICE NO.

Lotus Operating

OPERATOR

8

NO.

Suzie

FARM

Barber

COUNTY

30

S

34s

T

11w

R

1650' FNL & 1715' FWL of section

LOCATION

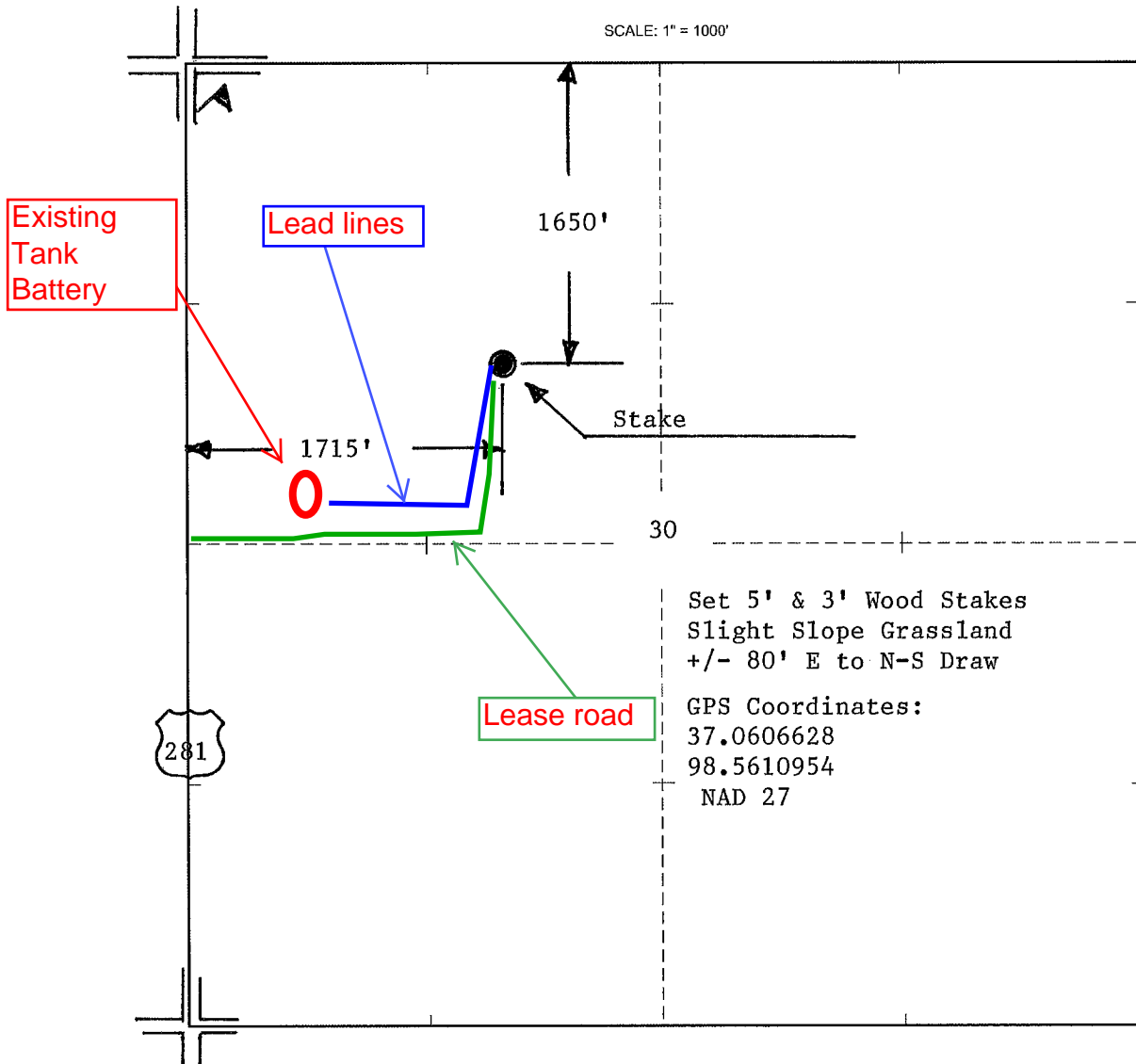
ELEVATION: 1401 gr.



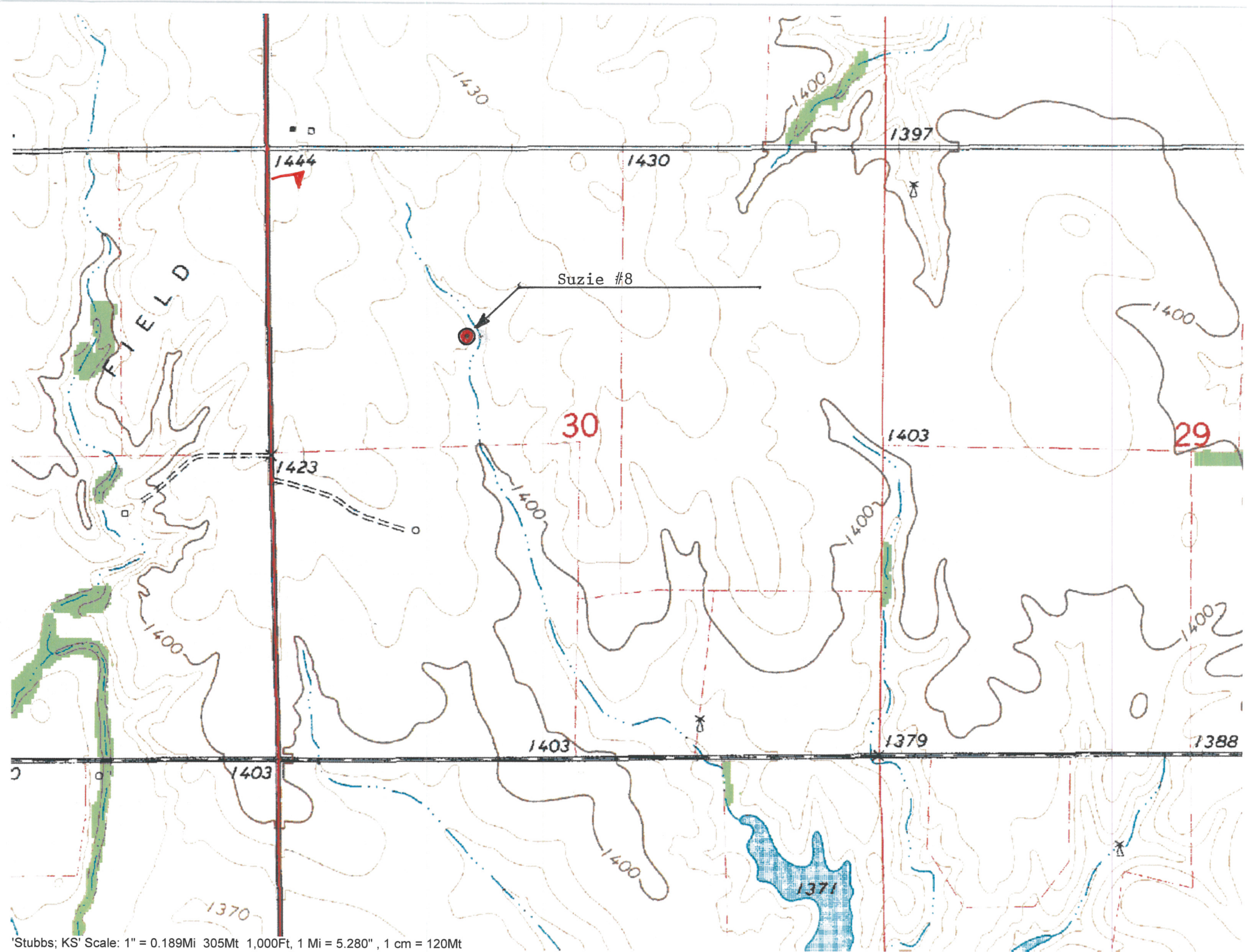
Lotus Operating Company, LLC
100 South Main
Suite 420
Wichita, Kansas 67202

AUTHORIZED BY: Tim Hellman

SCALE: 1" = 1000'



DATE STAKED: 8-7-13



Suzie #8

30

29