



**TRILOBITE TESTING, INC.**

# DRILL STEM TEST REPORT

Shakespeare Oil Co, Inc  
 202 W Main Street  
 Salem, IL 62881  
 ATTN: Tim Priest

**23-13s-31w**

**Zerr Trust #4-23**

Job Ticket: 52779

**DST#: 6**

Test Start: 2013.07.19 @ 21:22:00

## GENERAL INFORMATION:

Formation: **Myric Station**

Deviated: No Whipstock: ft (KB)

Time Tool Opened: 00:29:10

Time Test Ended: 06:32:40

Test Type: Conventional Bottom Hole (Reset)

Tester: Chuck Smith

Unit No: 62

**Interval: 4400.00 ft (KB) To 4432.00 ft (KB) (TVD)**

Total Depth: 4432.00 ft (KB) (TVD)

Hole Diameter: 7.88 inches Hole Condition: Good

Reference Elevations: 2880.00 ft (KB)

2870.00 ft (CF)

KB to GR/CF: 10.00 ft

**Serial #: 8018 Inside**

Press @ Run Depth: 131.10 psig @ 4405.00 ft (KB)

Start Date: 2013.07.19

End Date: 2013.07.20

Start Time: 21:22:02

End Time: 06:32:40

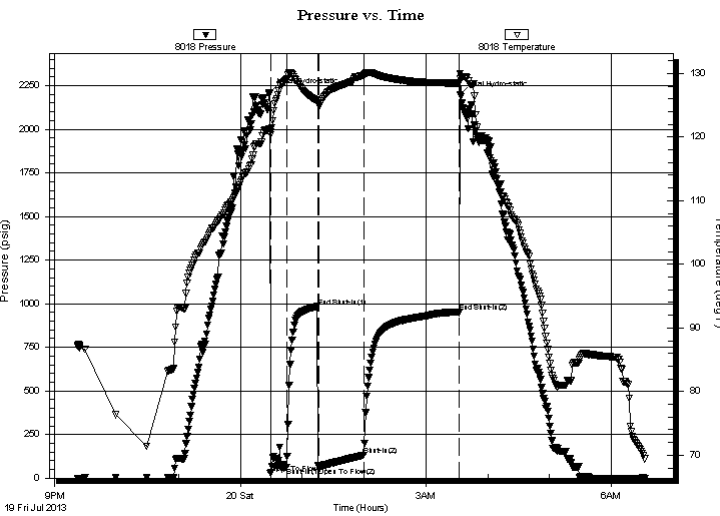
Capacity: 8000.00 psig

Last Calib.: 2013.07.20

Time On Btm: 2013.07.20 @ 00:28:10

Time Off Btm: 2013.07.20 @ 03:33:10

**TEST COMMENT:** B.O.B. @ 3 min.  
 3" Return, died @ 35 min.  
 B.O.B. @ 2 min.  
 B.O.B. @ 8 min.



## PRESSURE SUMMARY

Time (Min.)	Pressure (psig)	Temp (deg F)	Annotation
0	2208.79	121.25	Initial Hydro-static
1	27.02	120.44	Open To Flow (1)
17	64.56	129.05	Shut-In(1)
47	983.77	125.77	End Shut-In(1)
48	61.47	125.00	Open To Flow (2)
92	131.10	129.67	Shut-In(2)
184	954.23	128.48	End Shut-In(2)
185	2195.84	129.13	Final Hydro-static

## Recovery

Length (ft)	Description	Volume (bbl)
0.00	2410' GIP	0.00
118.00	GOCM 20g 15o 65m	0.58
213.00	GO 20g 80o	2.99

\* Recovery from multiple tests

## Gas Rates

Choke (inches)	Pressure (psig)	Gas Rate (Mcf/d)



**TRILOBITE  
TESTING, INC.**

# DRILL STEM TEST REPORT

**FLUID SUMMARY**

Shakespeare Oil Co, Inc

**23-13s-31w**

202 W Main Street  
Salem, IL 62881

**Zerr Trust #4-23**

Job Ticket: 52779

**DST#: 6**

ATTN: Tim Priest

Test Start: 2013.07.19 @ 21:22:00

## Mud and Cushion Information

Mud Type: Gel Chem

Cushion Type:

Oil API:

39 deg API

Mud Weight: 9.00 lb/gal

Cushion Length:

ft

Water Salinity:

ppm

Viscosity: 56.00 sec/qt

Cushion Volume:

bbbl

Water Loss: 8.79 in<sup>3</sup>

Gas Cushion Type:

Resistivity: ohm.m

Gas Cushion Pressure:

psig

Salinity: 3000.00 ppm

Filter Cake: 1.00 inches

## Recovery Information

Recovery Table

Length ft	Description	Volume bbbl
0.00	2410' GIP	0.000
118.00	GOCM 20g 15o 65m	0.580
213.00	GO 20g 80o	2.988

Total Length: 331.00 ft      Total Volume: 3.568 bbl

Num Fluid Samples: 0

Num Gas Bombs: 0

Serial #:

Laboratory Name:

Laboratory Location:

Recovery Comments: API: 39 @ 60 Degrees F = 39.

Serial #: 8018

Inside

Shakespeare Oil Co, Inc

Zerr Trust #4-23

DST Test Number: 6

