



TRILOBITE TESTING, INC.

DRILL STEM TEST REPORT

Forestar Petroleum Corp.

22-17s-29w Lane Co KS

1801 Broadway
#600 Denver Co
80202
ATTN: Charlie Sturdavant

Don 1-22

Job Ticket: 53260

DST#: 1

Test Start: 2013.06.03 @ 06:33:15

GENERAL INFORMATION:

Formation: **H-K**
 Deviated: No Whipstock: ft (KB)
 Time Tool Opened: 08:31:15
 Time Test Ended: 12:20:00
 Interval: **4122.00 ft (KB) To 4275.00 ft (KB) (TVD)**
 Total Depth: 4275.00 ft (KB) (TVD)
 Hole Diameter: 7.88 inches Hole Condition: Fair
 Test Type: Conventional Bottom Hole (Initial)
 Tester: Mike Roberts
 Unit No: 65
 Reference Elevations: 2809.00 ft (KB)
 2804.00 ft (CF)
 KB to GR/CF: 5.00 ft

Serial #: 8846

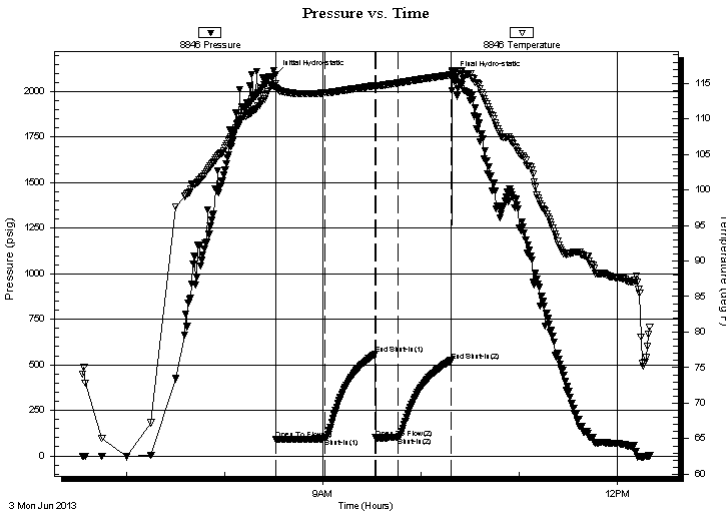
Inside

Press @ Run Depth: 100.23 psig @ 4123.00 ft (KB) Capacity: 8000.00 psig
 Start Date: 2013.06.03 End Date: 2013.06.03 Last Calib.: 2013.06.03
 Start Time: 06:33:15 End Time: 12:20:00 Time On Btm: 2013.06.03 @ 08:31:00
 Time Off Btm: 2013.06.03 @ 10:19:15

TEST COMMENT: IF: Built to 1" blow
 IS: No return blow
 FF: No blow
 FS: No return blow

PRESSURE SUMMARY

Time (Min.)	Pressure (psig)	Temp (deg F)	Annotation
0	2092.69	114.96	Initial Hydro-static
1	89.49	114.32	Open To Flow (1)
31	94.80	113.66	Shut-In(1)
61	557.29	114.67	End Shut-In(1)
62	98.61	114.50	Open To Flow (2)
75	100.23	115.06	Shut-In(2)
108	522.22	116.17	End Shut-In(2)
109	2085.60	116.82	Final Hydro-static



Recovery

Length (ft)	Description	Volume (bbl)
30.00	mud with oil spots	0.15

Gas Rates

Choke (inches)	Pressure (psig)	Gas Rate (Mcf/d)



**TRILOBITE
TESTING, INC.**

DRILL STEM TEST REPORT

FLUID SUMMARY

Forestar Petroleum Corp.

22-17s-29w Lane Co KS

1801 Broadway
#600 Denver Co
80202

Don 1-22

Job Ticket: 53260

DST#: 1

ATTN: Charlie Sturdavant

Test Start: 2013.06.03 @ 06:33:15

Mud and Cushion Information

Mud Type: Gel Chem

Cushion Type:

Oil API:

deg API

Mud Weight: 9.00 lb/gal

Cushion Length:

ft

Water Salinity:

ppm

Viscosity: 55.00 sec/qt

Cushion Volume:

bbbl

Water Loss: 7.20 in³

Gas Cushion Type:

Resistivity: 0.00 ohm.m

Gas Cushion Pressure:

psig

Salinity: 2400.00 ppm

Filter Cake: 1.00 inches

Recovery Information

Recovery Table

Length ft	Description	Volume bbl
30.00	mud w ith oil spots	0.148

Total Length: 30.00 ft Total Volume: 0.148 bbl

Num Fluid Samples: 0

Num Gas Bombs: 0

Serial #:

Laboratory Name:

Laboratory Location:

Recovery Comments:

Pressure vs. Time

