



**TRILOBITE  
TESTING, INC.**

# DRILL STEM TEST REPORT

Forestar Petroleum Corp.

**22-17s-29w Lane Co KS**

1801 Broadway  
#600 Denver Co  
80202

**Don 1-22**

Job Ticket: 53261

**DST#: 2**

ATTN: Charlie Sturdavant

Test Start: 2013.06.04 @ 13:00:15

## GENERAL INFORMATION:

Formation: **Lansing L - Ft.Scott**

Deviated: No Whipstock: ft (KB)

Time Tool Opened: 15:20:00

Time Test Ended: 18:29:45

Test Type: Conventional Bottom Hole (Reset)

Tester: Mike Roberts

Unit No: 65

**Interval: 4272.00 ft (KB) To 4480.00 ft (KB) (TVD)**

Reference Elevations: 2809.00 ft (KB)

Total Depth: 4272.00 ft (KB) (TVD)

2804.00 ft (CF)

Hole Diameter: 7.88 inches Hole Condition: Fair

KB to GR/CF: 5.00 ft

**Serial #: 8846**

**Inside**

Press @ Run Depth: 138.67 psig @ 4273.00 ft (KB)

Capacity: 8000.00 psig

Start Date: 2013.06.04

End Date:

2013.06.04

Last Calib.:

2013.06.04

Start Time: 13:00:15

End Time:

18:29:45

Time On Btm:

2013.06.04 @ 15:19:45

Time Off Btm:

2013.06.04 @ 16:52:15

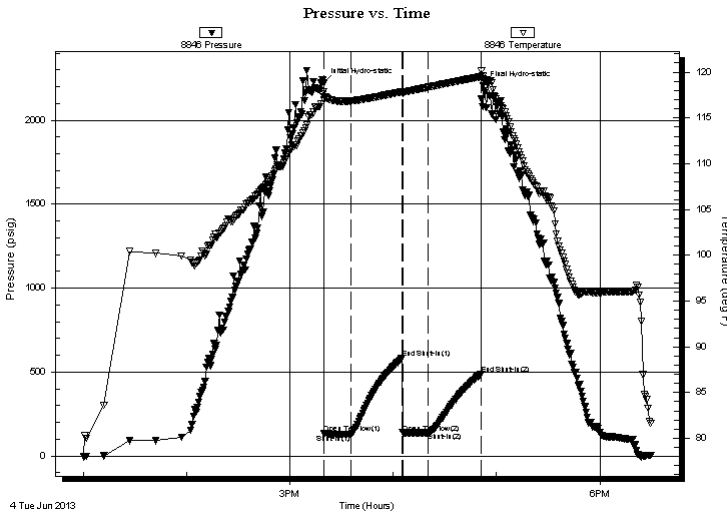
TEST COMMENT: IF: Built to 1/2" blow

IS: No return blow

FF: No blow

FS: No return blow

## PRESSURE SUMMARY



Time (Min.)	Pressure (psig)	Temp (deg F)	Annotation
0	2222.18	117.88	Initial Hydro-static
1	134.07	116.97	Open To Flow (1)
16	128.26	116.85	Shut-In(1)
46	584.43	117.87	End Shut-In(1)
46	138.18	117.79	Open To Flow (2)
61	138.67	118.33	Shut-In(2)
92	488.90	119.50	End Shut-In(2)
93	2206.57	119.30	Final Hydro-static

## Recovery

Length (ft)	Description	Volume (bbl)
15.00	mud with oil spots 100% m	0.07

## Gas Rates

Choke (inches)	Pressure (psig)	Gas Rate (Mcf/d)

\* Recovery from multiple tests





**TRILOBITE  
TESTING, INC.**

# DRILL STEM TEST REPORT

**FLUID SUMMARY**

Forestar Petroleum Corp.

**22-17s-29w Lane Co KS**

1801 Broadway  
#600 Denver Co  
80202

**Don 1-22**

Job Ticket: 53261

**DST#: 2**

ATTN: Charlie Sturdavant

Test Start: 2013.06.04 @ 13:00:15

## Mud and Cushion Information

Mud Type: Gel Chem

Cushion Type:

Oil API:

0 deg API

Mud Weight: 9.00 lb/gal

Cushion Length:

ft

Water Salinity:

0 ppm

Viscosity: 60.00 sec/qt

Cushion Volume:

bbbl

Water Loss: 4.80 in<sup>3</sup>

Gas Cushion Type:

Resistivity: 0.00 ohm.m

Gas Cushion Pressure:

psig

Salinity: 1500.00 ppm

Filter Cake: 1.00 inches

## Recovery Information

Recovery Table

Length ft	Description	Volume bbl
15.00	mud w ith oil spots 100%m	0.074

Total Length: 15.00 ft      Total Volume: 0.074 bbl

Num Fluid Samples: 0

Num Gas Bombs: 0

Serial #:

Laboratory Name:

Laboratory Location:

Recovery Comments:

### Pressure vs. Time

