



**TRILOBITE TESTING, INC.**

# DRILL STEM TEST REPORT

Forestar Petroleum Corp.

**22-17s-29w Lane Co KS**

1801 Broadway  
#600 Denver Co  
80202

**Don 1-22**

Job Ticket: 53262

**DST#: 3**

ATTN: Charlie Sturdavant

Test Start: 2013.06.05 @ 07:42:15

## GENERAL INFORMATION:

Formation: **Cherokee-Johnson**

Deviated: No Whipstock: ft (KB)

Time Tool Opened: 09:37:45

Time Test Ended: 15:41:45

Test Type: Conventional Bottom Hole (Reset)

Tester: Mike Roberts

Unit No: 65

**Interval: 4478.00 ft (KB) To 4570.00 ft (KB) (TVD)**

Reference Elevations: 2809.00 ft (KB)

Total Depth: 4570.00 ft (KB) (TVD)

2804.00 ft (CF)

Hole Diameter: 7.88 inches Hole Condition: Fair

KB to GR/CF: 5.00 ft

**Serial #: 8846**

**Inside**

Press @ Run Depth: 108.65 psig @ 4479.00 ft (KB)

Capacity: 8000.00 psig

Start Date: 2013.06.05

End Date:

2013.06.05

Last Calib.:

2013.06.05

Start Time:

07:42:15

End Time:

15:41:45

Time On Btm:

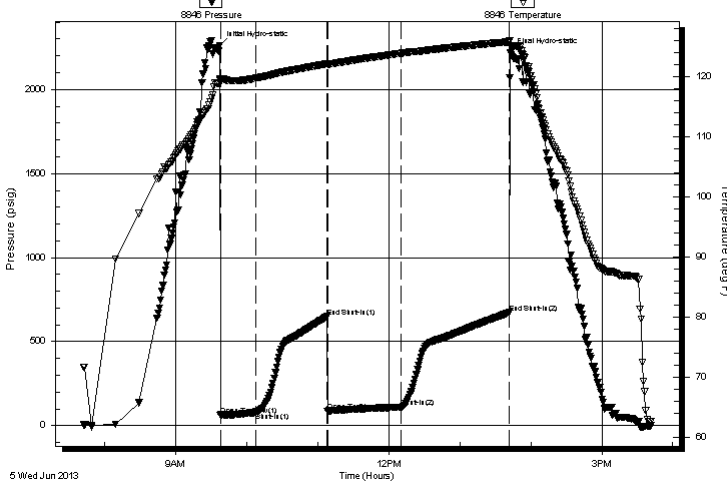
2013.06.05 @ 09:37:30

Time Off Btm:

2013.06.05 @ 13:42:45

**TEST COMMENT:** IF: Built to 4" blow  
IS: No return blow  
FF: Built to 7" blow  
FS: No return blow

Pressure vs. Time



## PRESSURE SUMMARY

Time (Min.)	Pressure (psig)	Temp (deg F)	Annotation
0	2260.23	119.63	Initial Hydro-static
1	63.47	118.95	Open To Flow (1)
31	78.73	119.68	Shut-In(1)
91	648.27	122.06	End Shut-In(1)
91	83.84	121.98	Open To Flow (2)
153	108.65	123.81	Shut-In(2)
245	671.73	125.73	End Shut-In(2)
246	2217.81	125.05	Final Hydro-static

## Recovery

Length (ft)	Description	Volume (bbl)
62.00	gcom 30% g 30%o 40%m	0.30
62.00	gcom 10%g 15%o 75%m	0.30
5.00	gcom 10%g 20%o 70%m	0.07

\* Recovery from multiple tests

## Gas Rates

Choke (inches)	Pressure (psig)	Gas Rate (Mcf/d)



**TRILOBITE  
TESTING, INC.**

# DRILL STEM TEST REPORT

**FLUID SUMMARY**

Forestar Petroleum Corp.

**22-17s-29w Lane Co KS**

1801 Broadway  
#600 Denver Co  
80202

**Don 1-22**

Job Ticket: 53262

**DST#: 3**

ATTN: Charlie Sturdavant

Test Start: 2013.06.05 @ 07:42:15

## Mud and Cushion Information

Mud Type: Gel Chem

Cushion Type:

Oil API:

0 deg API

Mud Weight: 9.00 lb/gal

Cushion Length:

ft

Water Salinity:

0 ppm

Viscosity: 60.00 sec/qt

Cushion Volume:

bbbl

Water Loss: 4.79 in<sup>3</sup>

Gas Cushion Type:

Resistivity: 0.00 ohm.m

Gas Cushion Pressure:

psig

Salinity: 1500.00 ppm

Filter Cake: 1.00 inches

## Recovery Information

Recovery Table

Length ft	Description	Volume bbbl
62.00	gcom 30% g 30%o 40%m	0.305
62.00	gcom 10%g 15%o 75%m	0.305
5.00	gcom 10%g 20%o 70%m	0.070

Total Length: 129.00 ft

Total Volume: 0.680 bbl

Num Fluid Samples: 0

Num Gas Bombs: 0

Serial #:

Laboratory Name:

Laboratory Location:

Recovery Comments:

Serial #: 8846

Inside

Forestar Petroleum Corp.

Don 1-22

DST Test Number: 3

