

Thomas J. Funk
Petroleum Geologist

Geologists' Report
Drilling Time and Sample Log

OPERATOR **Murfin Drilling Co., Inc**
LEASE **DCFY Unit** WELL NO **#1-11**

FIELD **Wildcat** API **15-039-21174**
LOCATION **2450' FNL & 2150' FEL**
SEC. **11** TWP. **2S** RGE. **29W**

COUNTY **Decatur** STATE **Kansas**
Measurements Are All From **KB**

CONTRACTOR **Murfin Drig Co Rig #8**
COMM **5/7/2013** COMP **5/13/2013**
RTD **4025'** LOG TD **4022'**
SAMPLES SAVED FROM **3025'** TO **4025'**
DRILLING TIME KEPT FROM **3025'** TO **4025'**
SAMPLES EXAMINED FROM **3025'** TO **4025'**

SECTIOAL SUPERVISION FROM **3110'** TO **4025'**
MUD/UP **2900'** TYPE MUD **Chemical**

FORMATION LOG TOP SAMPLE STRUCT
TOP DATUM TIME COMP
Anyhrite 2438 (+281) 2440 (+279) +6
Blantlyrite 2470 (+249) 2472 (+247) +7
Neva 3116 (-397) 3120 (-401) +10
Topeka 3502 (-783) 3504 (-785) +13
Heebner Sh 3660 (-941) 3663 (-944) +15
Lansing 3704 (-985) 3707 (-988) +11
Stark Sh 3868 (-1149) 3868 (-1149) +7
B/kansas City 3918 (-1199) 3921 (-1202) +7

ELECTRICAL SURVEYS
Log-Tech
DIL
DUCP
BHCS

CASING RECORD
SURFACE
8 5/8" at 218'KB w/190SX
PRODUCTION

ELEVATION
KB 2719'
DF
GL 2714'
Measurements Are All From **KB**

Daily Progress
Date
Depth
Spud
NO. Size
Make
Type
RR
Depth Out
Feet
Hours

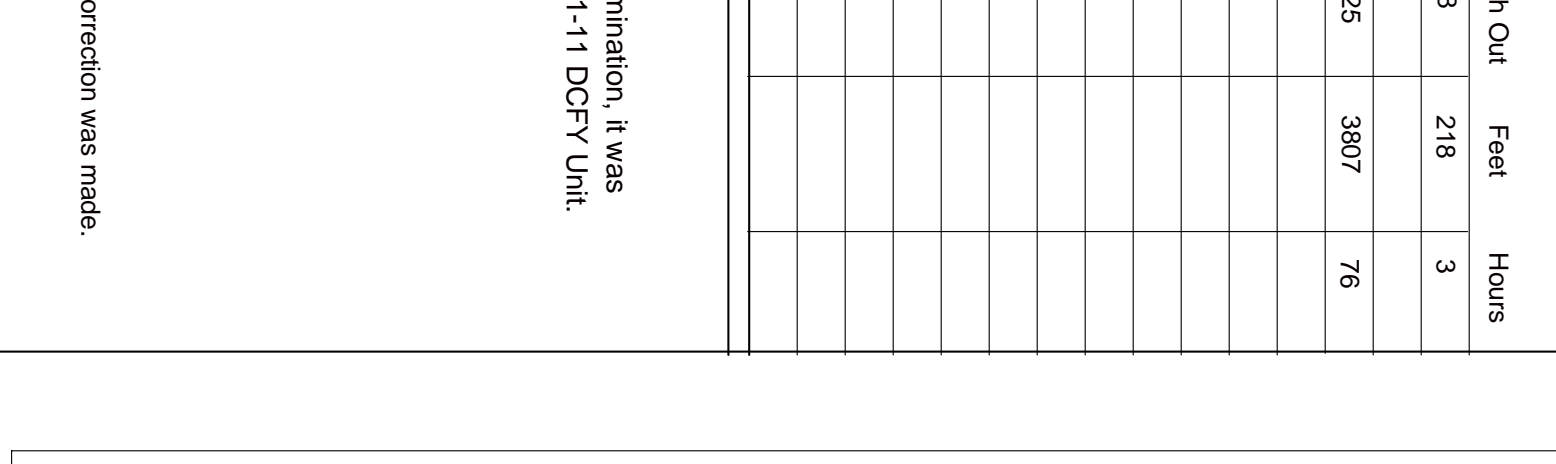
5/7/13	Spud	1	12 1/4"	GMS	RR	218	218	3
5/8/13	680'	2	7 7/8"	HTC	GX20c	4025	3807	76
5/9/13	2420'							
5/10/13	3290'							
5/11/13	3725'							
5/12/13	3868'							
5/13/13	4025' TD							

REMARKS AND RECOMMENDATIONS:
Based upon log analysis, DST recovery, and sample examination, it was decided to run production casing to further evaluate the #1-11 DCFY Unit.

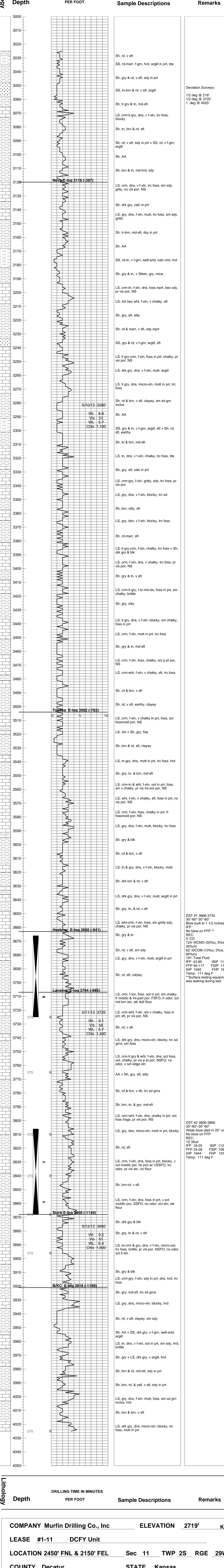
Thomas Funk
Petroleum Geologist

REFERENCE WELL FOR STRUCTURAL COMPARISON: Murfin Drig Co. #1-14 Pollnow
1150' FSL & 2070' FWL sec. 14-2S-29W, Decatur Co. KS

LEGEND



Lithology



COMPANY Murfin Drilling Co., Inc **ELEVATION** 2719' **KB**

LEASE #1-11 **DCFY Unit**

LOCATION 2450' FNL & 2150' FEL **Sec 11 TWP 2S RGE 29W**

COUNTY Decatur **STATE** Kansas