

# GEOLOGIST'S REPORT

## DRILLING TIME AND SAMPLE LOG

**BACH OIL PRODUCTION**  
**WELL: DELIMONT#2**

LOC.: 2310' FSL & 330' FEL  
 SEC. 8-2-19W  
 PHILLIPS COUNTY, KANSAS  
 API: 15-147-20712-00-00

**ELEVATION**  
 KB: 2242  
 GL: 2237  
 LOG MEASURED  
 FROM: KB

**SURFACE CASING**  
 20# 8 5/8 "  
 Casing set @ 222  
 w/175 SX

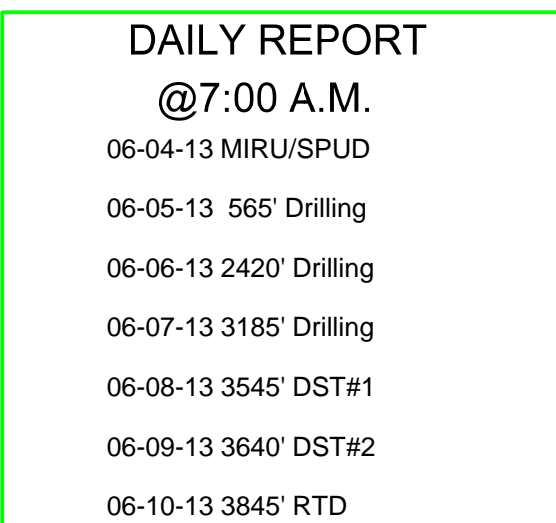
**PRODUCTION CASING**  
 5 1/2"  
 Casing set

**WELL LOG SURVEYS**  
 Compensated Density  
 Dual Induction  
 Micro

**DRILLING CONTR.: MURFIN RIG #24**  
 SPUD: 06-04-13 COMP: 06-10-13  
 MUD UP: 2800' TYPE MUD: CHEM.  
 DRILL TIME: LTD:3835'  
 RTD: 3845' LTD:3835'  
 SAMPLES SAVED: 3100'-RTD  
 GEOLOGIST: ROBERT J. PETERSEN

**ELECTRIC LOG TOPS**

FORMATION	DEPTH	DATUM	POSITION
Stone Corral	1839	+403	+6
Base Stone Corral	1864	+378	-1
Topeka	3206	-964	0
Heebner	3415	-1173	-2
Toronto	3443	-1201	-1
Lansing	3461	-1219	-1
Muncie Creek	3571	-1329	-3
Stark	3635	-1393	-3
Base Kansas City	3675	-1433	-1
Arbuckle	3798	-1556	+3



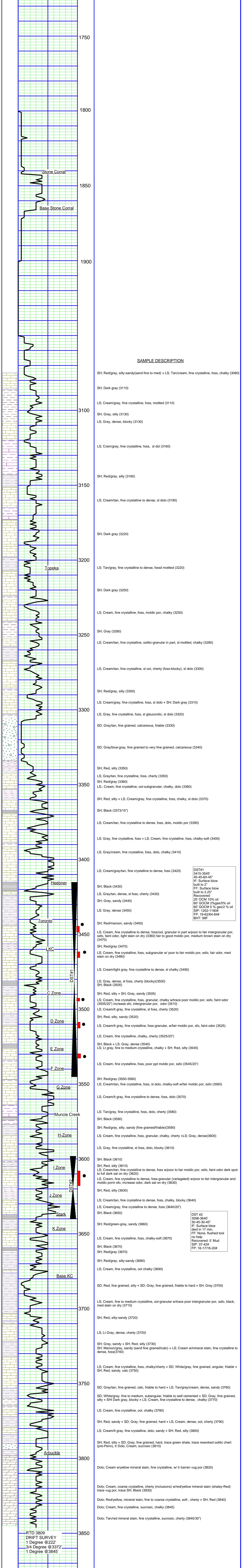
**REFERENCE WELL:**  
 Bach  
 Delimont #1  
 W/2 E/2 E/2 NE  
 8-2S-19W

**DAILY REPORT**  
**@7:00 A.M.**  
 06-04-13 MIRU/SPUD  
 06-05-13 565' Drilling  
 06-06-13 2420' Drilling  
 06-07-13 3185' Drilling  
 06-08-13 3545' DST#1  
 06-09-13 3640' DST#2  
 06-10-13 3845' RTD

**REMARKS AND RECOMMENDATIONS**

Production casing has been run to further test this well.

Respectfully submitted,  
*Robert J. Petersen*  
 Robert J. Petersen



**DST #1**  
 3415-3545'  
 45-45-60-45"  
 IF: Surface blow  
 built to 2.25"  
 FF: Surface blow  
 built to 2.25"  
 Recovered:  
 25' OCM 10% oil  
 60' GOCM 2% gas/5% oil  
 60' GOCM 5 % gas/2 % oil  
 SIP: 1202-1180#  
 FP: 19-62/64-84#  
 BHT: 98F

**DST #2**  
 3598-3640'  
 30-45-30-45"  
 IF: Surface blow  
 died in 17 min,  
 FF: None, flushed tool  
 no help  
 Recovered: 5' Mud  
 SIP: 37-42#  
 FP: 16-17/16-20#