



Sandridge Energy

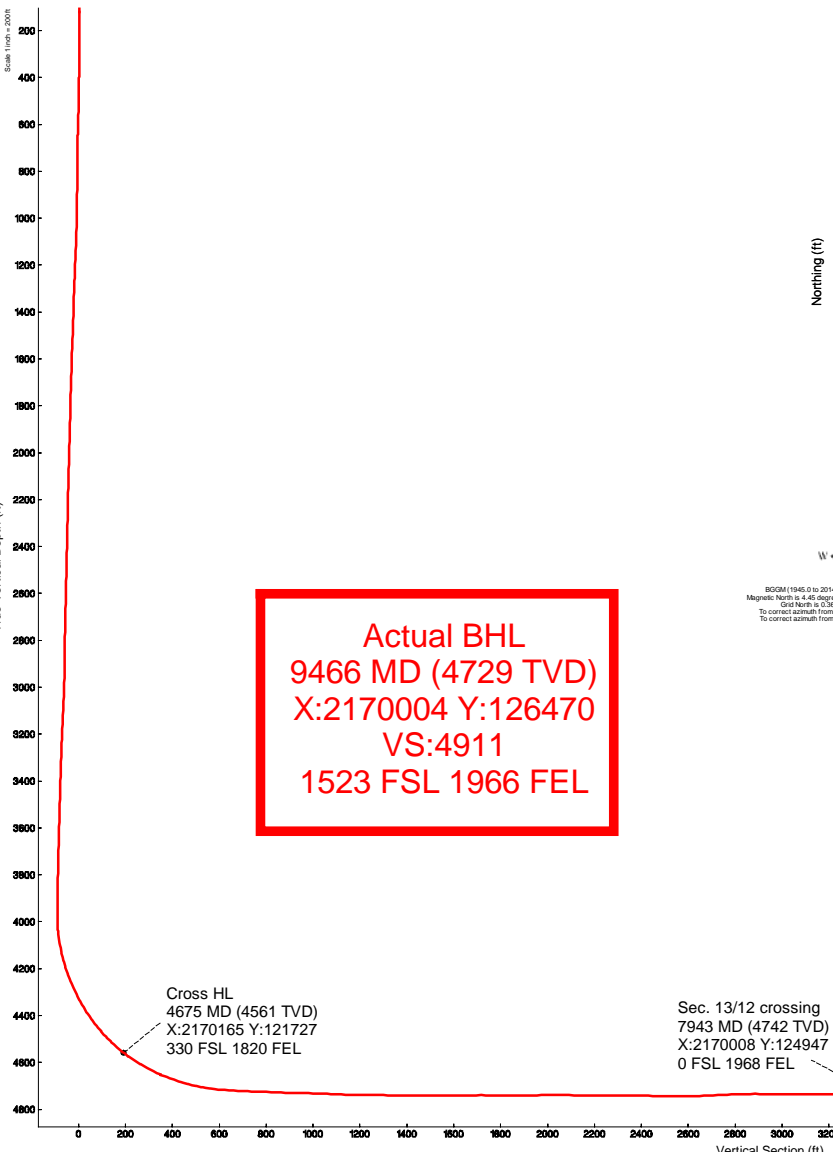
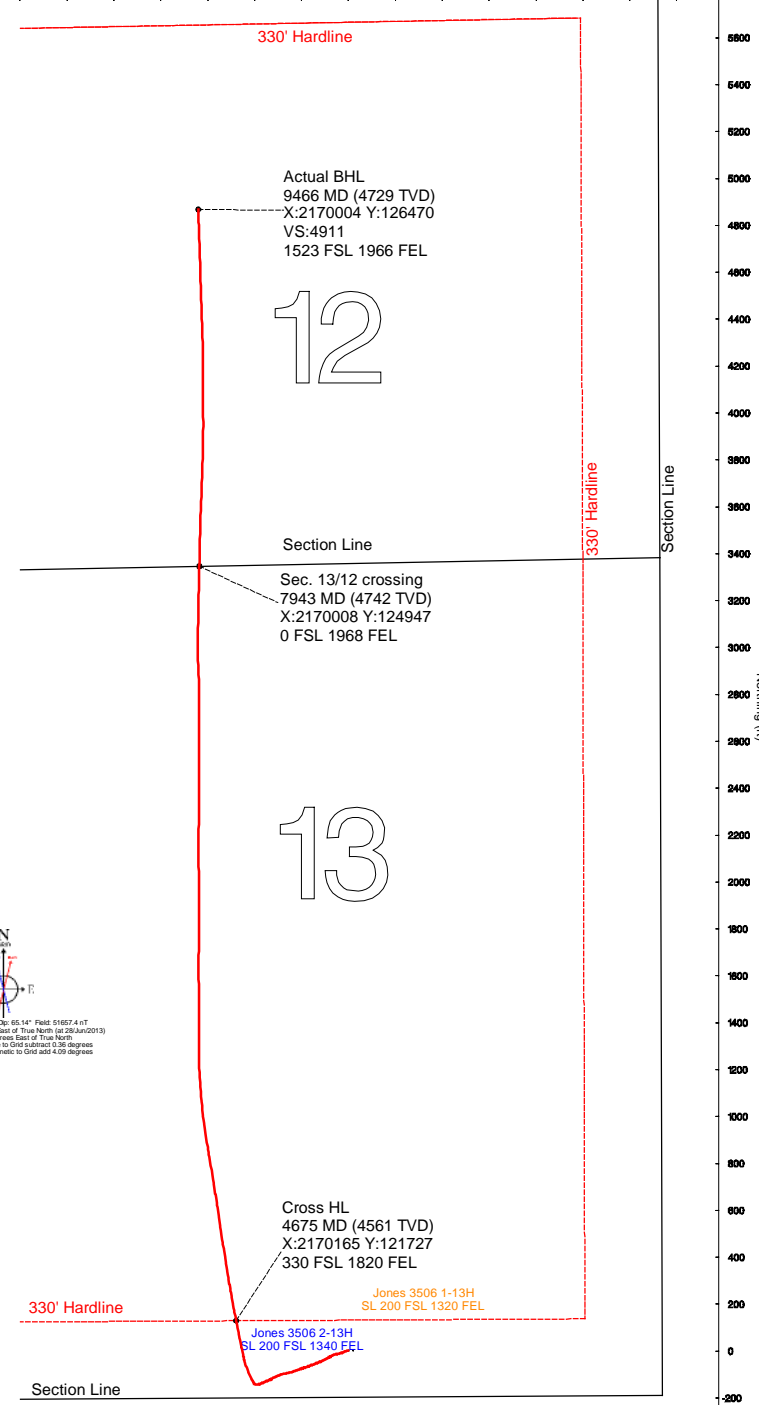
Jones 3506 2-13H (Final)
Jones 3506 2-13H SL 200 FSL 1340 FEL
Harper County, Kansas (Sandridge Energy) NAD27 / Grid

Plot reference wellpath is Plan 1	
True vertical depths are referenced to Rig on Jones 3506 2-13H (RT)	Grid System: NAD27 (Lambert-Kansas SP, Southern Zone (1502), US feet)
Measured depths are referenced to Rig on Jones 3506 2-13H (RT)	North Reference: Grid north
Rig on Jones 3506 2-13H (RT) to Mean Sea Level: 1240 feet	Scale: True distance
Mean Sea Level to Mud line (At Slot: Jones 3506 2-13H SL 200 FSL 1340 FEL): 1240 feet	Depths are in feet
Coordinates are in feet referenced to Slot	Created by: bougie on 18/Jul/2013

Location Information					
Facility Name	Grid East (US ft)	Grid North (US ft)	Latitude	Longitude	
Jones 3506 PAD Sec. 13-35S-6W	217065.000	121600.000	38°59'56.947"N	97°54'56.339"W	
Slot	Local N (ft)	Local E (ft)	Grid East (US ft)	Grid North (US ft)	Latitude
Jones 3506 2-13H SL 200 FSL 1340 FEL	0.00	-20.00	2170645.000	121600.000	38°59'56.948"N
Rig on Jones 3506 2-13H (RT) to Mud line (At Slot: Jones 3506 2-13H SL 200 FSL 1340 FEL)					0ft
Mean Sea Level to Mud line (At Slot: Jones 3506 2-13H SL 200 FSL 1340 FEL)					-1240ft
Rig on Jones 3506 2-13H (RT) to Mean Sea Level					1240ft



Easting (ft)
Scale 1 inch = 200 ft



SDGM 1965.0 to 2014.0 (by: 03.14" Field 51657.41T
Magnetic North is 4.45 degrees East of True North (at 28/Jun/2013)
Grid North is 0.36 degrees East of True North
To correct azimuth from True to Grid subtract 0.36 degrees
To correct azimuth from Magnetic to Grid add 4.09 degrees

Vertical Section (ft)
Azimuth 352.35° with reference 0.00 N, 0.00 E
Scale 1 inch = 200 ft



Actual Wellpath Report

Sandridge Jones 3506 2-13H_Final Surveys.
Page n of nn



REFERENCE WELLPATH IDENTIFICATION			
Operator	Sandridge Energy	Slot	Jones 3506 2-13H SL 200 FSL 1340 FEL
Area	Kansas	Well	Subject
Field	Harper County, Kansas (Sandridge Energy) NAD27 / Grid	Wellbore	Jones 3506 2-13H Actual
Facility	Jones 3506 PAD Sec. 13-35S-6W		

REPORT SETUP INFORMATION			
Projection System	NAD27 / Lambert Kansas SP, Southern Zone (1502), US feet		
North Reference	Grid	Software System	WellArchitect™ 3.0.0
Convergence at slot	0.36° East	User	Adammic
Scale	1.00006	Report Generated	05/Aug/2013 at 10:58:24 AM
Wellbore last revised	07-19-2013	Database/Source file	intokcapp01

WELLPATH LOCATION						
	Local coordinates		Grid coordinates		Geographic coordinates	
	North[ft]	East[ft]	Easting[US ft]	Northing[US ft]	Latitude	Longitude
Slot Location	0.00	-20.00	2170645.00	121600.00	36°59'56.948"N	97°54'56.585"W
Facility Reference Pt			2170665.00	121600.00	36°59'56.947"N	97°54'56.339"W
Field Reference Pt			2132248.82	161602.28	37°06'34.560"N	98°02'47.460"W

WELLPATH DATUM			
Calculation method	Minimum curvature	Rig on Jones 3506 2-13H (RT) to Facility Vertical Datum	0.00ft
Horizontal Reference Pt	Slot	Rig on Jones 3506 2-13H (RT) to Mean Sea Level	1240.00ft
Vertical Reference Pt	Rig on Jones 3506 2-13H (RT)	Rig on Jones 3506 2-13H (RT) to Mud Line at Slot (Jones 3506 2-13H SL 200 FSL 1340 FEL)	0.00ft
MD Reference Pt	Rig on Jones 3506 2-13H (RT)	Section Origin	N 0.00, E 0.00 ft
Field Vertical Reference	Mean Sea Level	Section Azimuth	352.35°



Actual Wellpath Report

Sandridge Jones 3506 2-13H_Final Surveys.
Page n of nn



REFERENCE WELLPATH IDENTIFICATION			
Operator	Sandridge Energy	Slot	Jones 3506 2-13H SL 200 FSL 1340 FEL
Area	Kansas	Well	Subject
Field	Harper County, Kansas (Sandridge Energy) NAD27 / Grid	Wellbore	Jones 3506 2-13H Actual
Facility	Jones 3506 PAD Sec. 13-35S-6W		

WELLPATH DATA (148 stations)										
MD [ft]	Inclination [°]	Azimuth [°]	TVD [ft]	Vert Sect [ft]	North [ft]	East [ft]	Grid East [US ft]	Grid North [US ft]	DLS [°/100ft]	Comments
0.00	0.000	6.450	0.00	0.00	0.00	0.00	2170645.00	121600.00	0.00	
117.00	0.340	6.450	117.00	0.34	0.34	0.04	2170645.04	121600.34	0.29	
179.00	0.380	245.640	179.00	0.46	0.44	-0.13	2170644.87	121600.44	1.01	
210.00	1.210	267.960	210.00	0.46	0.39	-0.55	2170644.45	121600.39	2.81	
241.00	1.600	262.120	240.99	0.49	0.32	-1.30	2170643.70	121600.32	1.34	
271.00	1.380	261.830	270.98	0.48	0.21	-2.08	2170642.92	121600.21	0.73	
302.00	1.930	262.210	301.96	0.48	0.09	-2.96	2170642.04	121600.09	1.77	
333.00	2.860	256.100	332.94	0.39	-0.17	-4.23	2170640.77	121599.83	3.11	
363.00	3.280	253.690	362.89	0.18	-0.59	-5.78	2170639.22	121599.41	1.46	
394.00	3.290	247.770	393.84	-0.17	-1.18	-7.46	2170637.54	121598.82	1.09	
424.00	4.200	245.910	423.78	-0.70	-1.95	-9.26	2170635.74	121598.05	3.06	
454.00	4.120	250.150	453.70	-1.24	-2.77	-11.27	2170633.73	121597.23	1.06	
485.00	5.050	252.780	484.60	-1.70	-3.55	-13.62	2170631.38	121596.45	3.07	
515.00	4.910	248.580	514.49	-2.23	-4.41	-16.08	2170628.92	121595.59	1.30	
546.00	5.480	246.670	545.36	-2.94	-5.48	-18.67	2170626.33	121594.52	1.92	
576.00	5.410	240.970	575.22	-3.85	-6.73	-21.23	2170623.77	121593.27	1.82	
607.00	5.710	244.940	606.08	-4.84	-8.09	-23.90	2170621.10	121591.90	1.57	
647.00	5.770	251.000	645.88	-5.83	-9.59	-27.60	2170617.39	121590.41	1.52	
722.00	6.150	251.810	720.47	-7.31	-12.07	-34.99	2170610.01	121587.93	0.52	
814.00	5.080	262.110	812.03	-8.23	-14.17	-43.70	2170601.29	121585.83	1.59	
905.00	5.860	259.070	902.62	-8.51	-15.61	-52.25	2170592.74	121584.39	0.91	
996.00	5.920	250.840	993.14	-9.71	-18.03	-61.25	2170583.75	121581.97	0.93	
1088.00	6.370	243.440	1084.61	-12.31	-21.87	-70.30	2170574.70	121578.13	0.99	
1179.00	5.910	237.850	1175.09	-15.89	-26.62	-78.78	2170566.22	121573.38	0.83	
1271.00	5.910	239.460	1266.60	-19.70	-31.54	-86.87	2170558.13	121568.46	0.18	
1362.00	5.760	244.060	1357.13	-22.95	-35.92	-95.01	2170549.99	121564.08	0.54	
1454.00	5.840	243.990	1448.66	-25.88	-39.99	-103.37	2170541.63	121560.00	0.09	
1545.00	7.020	244.530	1539.08	-29.04	-44.41	-112.55	2170532.44	121555.58	1.30	
1637.00	6.740	246.540	1630.42	-32.23	-48.98	-122.58	2170522.42	121551.02	0.40	
1728.00	7.110	249.490	1720.76	-34.93	-53.08	-132.75	2170512.24	121546.92	0.56	
1823.00	6.280	248.310	1815.11	-37.50	-57.06	-143.08	2170501.91	121542.94	0.89	
1918.00	6.880	250.240	1909.48	-39.96	-60.91	-153.27	2170491.72	121539.09	0.67	
2013.00	6.910	251.500	2003.80	-42.23	-64.64	-164.04	2170480.95	121535.35	0.16	
2108.00	7.220	247.460	2098.07	-44.84	-68.74	-174.98	2170470.01	121531.25	0.62	
2202.00	6.850	252.530	2191.37	-47.31	-72.69	-185.78	2170459.21	121527.30	0.77	
2297.00	6.090	253.220	2285.76	-49.08	-75.85	-196.01	2170448.98	121524.15	0.80	
2392.00	6.360	249.230	2380.20	-51.07	-79.17	-205.75	2170439.24	121520.83	0.54	
2487.00	6.540	250.800	2474.60	-53.35	-82.81	-215.78	2170429.21	121517.18	0.27	
2582.00	7.070	251.770	2568.93	-55.50	-86.42	-226.44	2170418.54	121513.57	0.57	
2677.00	6.910	249.430	2663.23	-57.86	-90.26	-237.35	2170407.64	121509.74	0.34	
2772.00	9.400	256.200	2757.26	-59.96	-94.12	-250.23	2170394.75	121505.88	2.80	
2867.00	10.000	259.040	2850.90	-61.27	-97.54	-265.87	2170379.12	121502.46	0.81	
2961.00	9.800	256.460	2943.50	-62.56	-100.96	-281.66	2170363.33	121499.03	0.52	
3056.00	10.160	247.110	3037.07	-65.60	-106.11	-297.24	2170347.75	121493.88	1.75	
3151.00	9.140	246.120	3130.73	-69.91	-112.43	-311.85	2170333.13	121487.57	1.09	



Actual Wellpath Report

Sandridge Jones 3506 2-13H_Final Surveys.
Page n of nn



REFERENCE WELLPATH IDENTIFICATION			
Operator	Sandridge Energy	Slot	Jones 3506 2-13H SL 200 FSL 1340 FEL
Area	Kansas	Well	Subject
Field	Harper County, Kansas (Sandridge Energy) NAD27 / Grid	Wellbore	Jones 3506 2-13H Actual
Facility	Jones 3506 PAD Sec. 13-35S-6W		

WELLPATH DATA (148 stations) † = interpolated/extrapolated station										
MD [ft]	Inclination [°]	Azimuth [°]	TVD [ft]	Vert Sect [ft]	North [ft]	East [ft]	Grid East [US ft]	Grid North [US ft]	DLS [°/100ft]	Comments
3246.00	6.090	241.600	3224.88	-73.80	-117.88	-323.19	2170321.79	121482.11	3.27	
3301.00	4.680	238.340	3279.63	-75.75	-120.44	-327.67	2170317.31	121479.55	2.62	
3341.00	4.590	239.150	3319.50	-77.04	-122.12	-330.43	2170314.55	121477.87	0.28	
3404.00	5.400	243.600	3382.26	-78.99	-124.73	-335.25	2170309.73	121475.26	1.42	
3436.00	5.990	247.070	3414.11	-79.91	-126.05	-338.14	2170306.84	121473.94	2.13	
3531.00	6.100	246.660	3508.58	-82.58	-129.98	-347.33	2170297.64	121470.01	0.12	
3625.00	6.260	248.500	3602.03	-85.16	-133.84	-356.69	2170288.29	121466.15	0.27	
3720.00	5.030	244.460	3696.57	-87.68	-137.53	-365.27	2170279.71	121462.46	1.36	
3815.00	5.240	248.710	3791.19	-89.98	-140.91	-373.07	2170271.91	121459.09	0.46	
3910.00	5.860	251.850	3885.74	-91.89	-143.99	-381.72	2170263.26	121456.00	0.73	
3941.00	5.890	252.860	3916.58	-92.44	-144.95	-384.74	2170260.24	121455.04	0.35	
3973.00	6.210	255.580	3948.40	-92.91	-145.87	-387.99	2170256.99	121454.12	1.34	
4005.00	6.700	266.940	3980.20	-92.97	-146.40	-391.53	2170253.45	121453.59	4.27	
4036.00	6.930	283.100	4010.98	-92.16	-146.07	-395.15	2170249.82	121453.92	6.21	
4068.00	7.570	303.760	4042.73	-90.08	-144.46	-398.79	2170246.19	121455.53	8.34	
4099.00	10.080	320.660	4073.37	-86.42	-141.23	-402.21	2170242.77	121458.76	11.56	
4131.00	12.180	326.030	4104.77	-81.01	-136.26	-405.87	2170239.11	121463.73	7.31	
4163.00	14.490	329.800	4135.90	-74.29	-130.00	-409.77	2170235.21	121469.99	7.71	
4194.00	15.600	332.200	4165.84	-66.79	-122.96	-413.66	2170231.31	121477.03	4.11	
4226.00	17.770	334.160	4196.49	-58.11	-114.76	-417.80	2170227.18	121485.23	7.00	
4257.00	20.710	336.240	4225.76	-48.35	-105.48	-422.07	2170222.90	121494.51	9.74	
4289.00	23.510	337.740	4255.40	-36.74	-94.40	-426.77	2170218.21	121505.60	8.93	
4320.00	25.300	339.420	4283.63	-24.30	-82.47	-431.44	2170213.53	121517.52	6.19	
4352.00	26.700	340.990	4312.39	-10.58	-69.27	-436.18	2170208.79	121530.72	4.87	
4383.00	28.210	342.910	4339.90	3.47	-55.68	-440.61	2170204.37	121544.31	5.65	
4415.00	30.940	345.350	4367.73	19.10	-40.49	-444.91	2170200.06	121559.51	9.32	
4447.00	34.420	346.600	4394.66	36.27	-23.73	-449.09	2170195.88	121576.27	11.08	
4478.00	36.960	347.680	4419.83	54.28	-6.10	-453.11	2170191.86	121593.90	8.44	
4510.00	38.480	348.280	4445.15	73.80	13.05	-457.18	2170187.79	121613.05	4.89	
4542.00	40.690	348.780	4469.81	94.15	33.03	-461.24	2170183.74	121633.03	6.98	
4573.00	43.060	348.760	4492.89	114.80	53.33	-465.27	2170179.71	121653.33	7.65	
4605.00	45.950	348.980	4515.71	137.18	75.33	-469.59	2170175.38	121675.34	9.04	
4636.00	49.060	349.090	4536.64	160.00	97.77	-473.94	2170171.03	121697.78	10.04	
4668.00	51.710	348.780	4557.05	184.61	121.96	-478.67	2170166.30	121721.97	8.31	
4675.00†	52.344	348.833	4561.35	190.11	127.38	-479.74	2170165.23	121727.38	9.08	Cross HL 4675 MD (4561 TVD) X:2170165 Y:121727 330 FSL 1820 FEL
4699.00	54.520	349.010	4575.65	209.35	146.29	-483.45	2170161.52	121746.30	9.08	
4731.00	56.980	349.400	4593.66	235.76	172.27	-488.40	2170156.57	121772.28	7.75	
4763.00	59.030	349.660	4610.61	262.87	198.96	-493.33	2170151.64	121798.97	6.44	
4794.00	61.360	349.820	4626.02	289.74	225.43	-498.12	2170146.85	121825.44	7.53	
4826.00	63.940	350.020	4640.72	318.13	253.41	-503.09	2170141.87	121853.42	8.08	
4858.00	66.680	350.140	4654.09	347.18	282.04	-508.10	2170136.87	121882.06	8.57	
4889.00	69.160	350.890	4665.74	375.89	310.38	-512.83	2170132.13	121910.40	8.31	
4921.00	70.960	350.610	4676.65	405.96	340.07	-517.67	2170127.30	121940.09	5.68	
4953.00	73.010	350.680	4686.55	436.37	370.09	-522.62	2170122.35	121970.11	6.41	
4984.00	75.150	350.920	4695.05	466.17	399.52	-527.38	2170117.59	121999.54	6.94	



Actual Wellpath Report

Sandridge Jones 3506 2-13H_Final Surveys.
Page n of nn



REFERENCE WELLPATH IDENTIFICATION			
Operator	Sandridge Energy	Slot	Jones 3506 2-13H SL 200 FSL 1340 FEL
Area	Kansas	Well	Subject
Field	Harper County, Kansas (Sandridge Energy) NAD27 / Grid	Wellbore	Jones 3506 2-13H Actual
Facility	Jones 3506 PAD Sec. 13-35S-6W		

WELLPATH DATA (148 stations) † = interpolated/extrapolated station										
MD [ft]	Inclination [°]	Azimuth [°]	TVD [ft]	Vert Sect [ft]	North [ft]	East [ft]	Grid East [US ft]	Grid North [US ft]	DLS [°/100ft]	Comments
5016.00	77.310	350.830	4702.67	497.24	430.20	-532.31	2170112.66	122030.23	6.76	
5047.00	79.530	351.250	4708.89	527.60	460.20	-537.04	2170107.93	122060.23	7.28	
5079.00	81.940	351.640	4714.04	559.18	491.43	-541.74	2170103.23	122091.46	7.63	
5115.00	84.680	351.320	4718.24	594.92	526.78	-547.03	2170097.93	122126.82	7.66	
5161.00	86.700	351.910	4721.69	640.79	572.16	-553.72	2170091.24	122172.20	4.57	
5210.00	87.380	351.520	4724.22	689.72	620.58	-560.77	2170084.19	122220.62	1.60	
5255.00	87.960	350.540	4726.05	734.67	665.00	-567.78	2170077.18	122265.04	2.53	
5305.00	87.650	350.630	4727.97	784.61	714.29	-575.96	2170069.01	122314.33	0.65	
5382.00	87.760	350.700	4731.05	861.51	790.21	-588.44	2170056.53	122390.25	0.17	
5427.00	88.460	350.380	4732.53	906.47	834.57	-595.83	2170049.13	122434.62	1.71	
5450.00	88.550	350.910	4733.13	929.45	857.26	-599.57	2170045.40	122457.31	2.34	
5499.00	89.600	350.640	4733.93	978.42	905.61	-607.42	2170037.54	122505.67	2.21	
5562.00	87.520	352.640	4735.51	1041.39	967.92	-616.58	2170028.38	122567.98	4.58	
5594.00	86.950	352.900	4737.05	1073.35	999.63	-620.60	2170024.36	122599.69	1.96	
5657.00	88.090	354.900	4739.78	1136.27	1062.21	-627.29	2170017.67	122662.27	3.65	
5688.00	88.800	355.210	4740.62	1167.22	1093.08	-629.96	2170015.00	122693.15	2.50	
5783.00	89.690	356.920	4741.87	1262.01	1187.84	-636.48	2170008.48	122787.92	2.03	
5878.00	89.010	0.190	4742.95	1356.43	1282.79	-638.87	2170006.09	122882.87	3.52	
5972.00	89.350	0.280	4744.30	1449.53	1376.78	-638.49	2170006.47	122976.87	0.37	
6067.00	90.250	359.520	4744.63	1543.71	1471.78	-638.65	2170006.31	123071.87	1.24	
6160.00	91.170	359.490	4743.47	1635.97	1564.77	-639.46	2170005.50	123164.87	0.99	
6191.00	91.290	359.590	4742.81	1666.72	1595.76	-639.70	2170005.26	123195.86	0.50	
6282.00	88.890	0.570	4742.67	1756.89	1686.75	-639.58	2170005.38	123286.86	2.85	
6377.00	90.280	0.530	4743.35	1850.91	1781.74	-638.67	2170006.30	123381.85	1.46	
6472.00	90.860	359.960	4742.41	1945.01	1876.74	-638.26	2170006.70	123476.85	0.86	
6567.00	89.690	359.510	4741.95	2039.22	1971.73	-638.70	2170006.26	123571.86	1.32	
6662.00	89.540	359.230	4742.59	2133.50	2066.73	-639.74	2170005.22	123666.85	0.33	
6757.00	89.750	0.310	4743.18	2227.70	2161.72	-640.12	2170004.84	123761.85	1.16	
6852.00	89.970	0.600	4743.41	2321.75	2256.72	-639.37	2170005.59	123856.86	0.38	
6947.00	88.550	0.070	4744.64	2415.82	2351.71	-638.81	2170006.15	123951.85	1.60	
7042.00	89.140	359.830	4746.55	2509.97	2446.69	-638.90	2170006.06	124046.84	0.67	
7137.00	90.990	0.160	4746.45	2604.12	2541.68	-638.91	2170006.05	124141.84	1.98	
7232.00	92.860	0.390	4743.26	2698.15	2636.62	-638.45	2170006.51	124236.78	1.98	
7327.00	92.590	0.820	4738.74	2792.06	2731.51	-637.45	2170007.51	124331.68	0.53	
7422.00	89.750	358.720	4736.80	2886.23	2826.47	-637.83	2170007.13	124426.65	3.72	
7516.00	89.850	356.580	4737.13	2979.82	2920.39	-641.68	2170003.28	124520.57	2.28	
7611.00	88.830	0.850	4738.22	3074.21	3015.34	-643.81	2170001.15	124615.52	4.62	
7707.00	90.830	1.170	4738.51	3169.11	3111.32	-642.12	2170002.84	124711.51	2.11	
7802.00	88.890	1.170	4738.74	3262.98	3206.29	-640.18	2170004.78	124806.49	2.04	
7897.00	88.770	1.550	4740.68	3356.79	3301.24	-637.93	2170007.03	124901.45	0.42	
7943.00†	89.068	1.261	4741.55	3402.21	3347.22	-636.80	2170008.16	124947.43	0.90	Sec. 13/12 crossing 7943 MD (4742 TVD) X:2170008 Y:124947 0 FSL 1968 FEL
7991.00	89.380	0.960	4742.20	3449.64	3395.21	-635.87	2170009.09	124995.42	0.90	
8085.00	90.000	1.620	4742.70	3542.50	3489.18	-633.75	2170011.21	125089.40	0.96	
8180.00	89.970	1.930	4742.73	3636.21	3584.14	-630.81	2170014.15	125184.36	0.33	
8275.00	90.090	2.530	4742.68	3729.80	3679.06	-627.11	2170017.85	125279.29	0.64	



Actual Wellpath Report

Sandridge Jones 3506 2-13H_Final Surveys.
Page n of nn



REFERENCE WELLPATH IDENTIFICATION			
Operator	Sandridge Energy	Slot	Jones 3506 2-13H SL 200 FSL 1340 FEL
Area	Kansas	Well	Subject
Field	Harper County, Kansas (Sandridge Energy) NAD27 / Grid	Wellbore	Jones 3506 2-13H Actual
Facility	Jones 3506 PAD Sec. 13-35S-6W		

WELLPATH DATA (148 stations)										
MD [ft]	Inclination [°]	Azimuth [°]	TVD [ft]	Vert Sect [ft]	North [ft]	East [ft]	Grid East [US ft]	Grid North [US ft]	DLS [°/100ft]	Comments
8370.00	89.410	1.660	4743.09	3823.43	3774.00	-623.64	2170021.32	125374.23	1.16	
8465.00	90.650	1.230	4743.04	3917.23	3868.97	-621.25	2170023.72	125469.20	1.38	
8560.00	89.260	359.790	4743.12	4011.27	3963.96	-620.40	2170024.56	125564.20	2.11	
8655.00	88.980	359.480	4744.58	4105.49	4058.94	-621.01	2170023.96	125659.19	0.44	
8749.00	90.770	359.580	4744.78	4198.75	4152.94	-621.78	2170023.18	125753.19	1.91	
8844.00	91.260	359.850	4743.10	4292.95	4247.92	-622.25	2170022.71	125848.18	0.59	
8939.00	87.900	358.140	4743.80	4387.29	4342.89	-623.92	2170021.05	125943.15	3.97	
9034.00	90.680	357.790	4744.97	4481.82	4437.81	-627.29	2170017.67	126038.08	2.95	
9129.00	91.360	358.300	4743.28	4576.33	4532.74	-630.53	2170014.43	126133.02	0.89	
9224.00	92.210	358.150	4740.32	4670.79	4627.65	-633.47	2170011.49	126227.93	0.91	
9319.00	92.740	357.890	4736.22	4765.23	4722.50	-636.75	2170008.21	126322.79	0.62	
9413.00	93.120	358.310	4731.42	4858.64	4816.33	-639.86	2170005.10	126416.62	0.60	
9466.00	93.120	358.310	4728.53	4911.27	4869.22	-641.42	2170003.54	126469.52	0.00	Actual BHL 9466 MD (4729 TVD) X:2170004 Y:126470 VS:4911 1523 FSL 1966 FEL

TARGETS									
Name	MD [ft]	TVD [ft]	North [ft]	East [ft]	Grid East [US ft]	Grid North [US ft]	Latitude	Longitude	Shape
Jones 3506 2-13H PBHL		4728.00	4875.70	-654.96	2169990.00	126476.00	37°00'45.197"N	97°55'04.284"W	point

WELLPATH COMPOSITION - Ref Wellbore: Jones 3506 2-13H Actual Ref Wellpath: AWP (Final)				
Start MD [ft]	End MD [ft]	Positional Uncertainty Model	Log Name/Comment	Wellbore
0.00	9413.00	NaviTrak (Standard)	Integ MWD	Jones 3506 2-13H Actual
9413.00	9466.00	Blind Drilling (std)	Projection to bit	Jones 3506 2-13H Actual