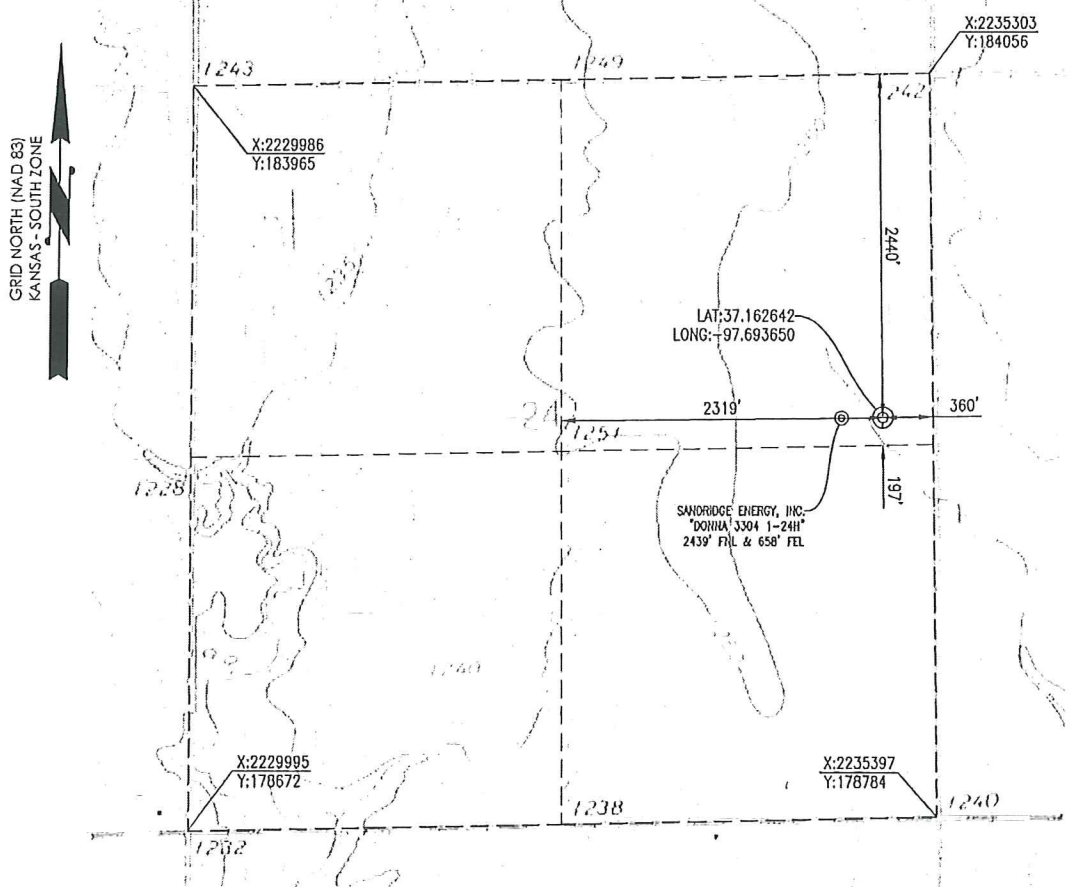


SUMNER COUNTY, KANSAS
 2440' FNL-360' FEL SECTION 24 TOWNSHIP 33S RANGE 04W 6TH P.M.



ELEVATION:
 1238' GR. AT STAKE

OPERATOR: SANDRIDGE ENERGY, INC. WELL NO: 1-24 SWD

LEASE NAME: MADISON 3304

TOPOGRAPHIC & VEGETATION: LOCATION FELL IN A FIELD

GOOD DRILL SITE: YES REFERENCE STAKES OR ALTERNATE LOCATION STAKES SET: NONE

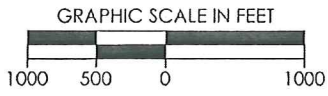
BEST ACCESSIBILITY TO LOCATION: EAST LINE

DISTANCE & DIRECTION FROM HWY JCT OR TOWN: FROM THE JCT. OF KS-44/W 90TH ST S & S BLUFF RD (±18.70 MILES WEST OF ANTHONY, KS) TRAVEL NORTH ON S BLUFF RD FOR ±0.50 MILES TO THE EAST 1/4 CORNER OF SECTION 24, T33S-R04W.

(THE FOLLOWING INFORMATION WAS GATHERED USING A GPS RECEIVER ACCURACY ±2-3 METERS)	GPS DATUM: NAD-27 LAT: 37.162642 LONG: -97.693650	STATE PLANE COORDINATES: ZONE: KS-SOUTH NAD-27 X: 2234985.758 Y: 181610.040
--	---	--

DATE STAKED: 03-26-2013

GENERAL NOTES:
 THE TIES AND FOOTAGES SHOWN ON THIS PLAT ARE FROM LINES OF OCCUPATION FROM A SURVEY MADE ON THE GROUND AND / OR BEARING AND DISTANCES FROM THE GENERAL LAND OFFICE PLAT OF THE AREA SHOWN AND MAY NOT BE THE ACTUAL PROPERTY CORNERS. THIS PLAT DOES NOT REPRESENT A TRUE BOUNDARY SURVEY.



REVISION		SandRidge	
		"MADISON 3304 1-24 SWD" PART OF THE NE 1/4 OF SECTION 24, T-33-S, R-04-W PROPOSED DRILL SITE SUMNER COUNTY, KANSAS	
SCALE: 1" = 1000'		DRAWN BY: MF SHEET NO.: 1 OF 3	
PLOT DATE: 03-27-2013			