

T11S, R22W, 6th P.M.

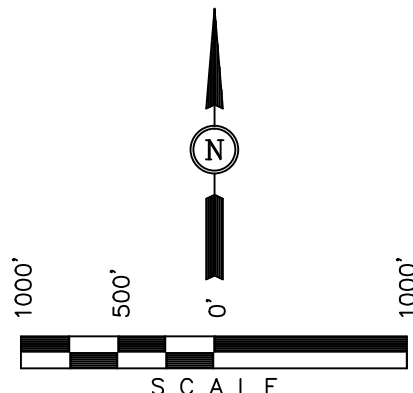
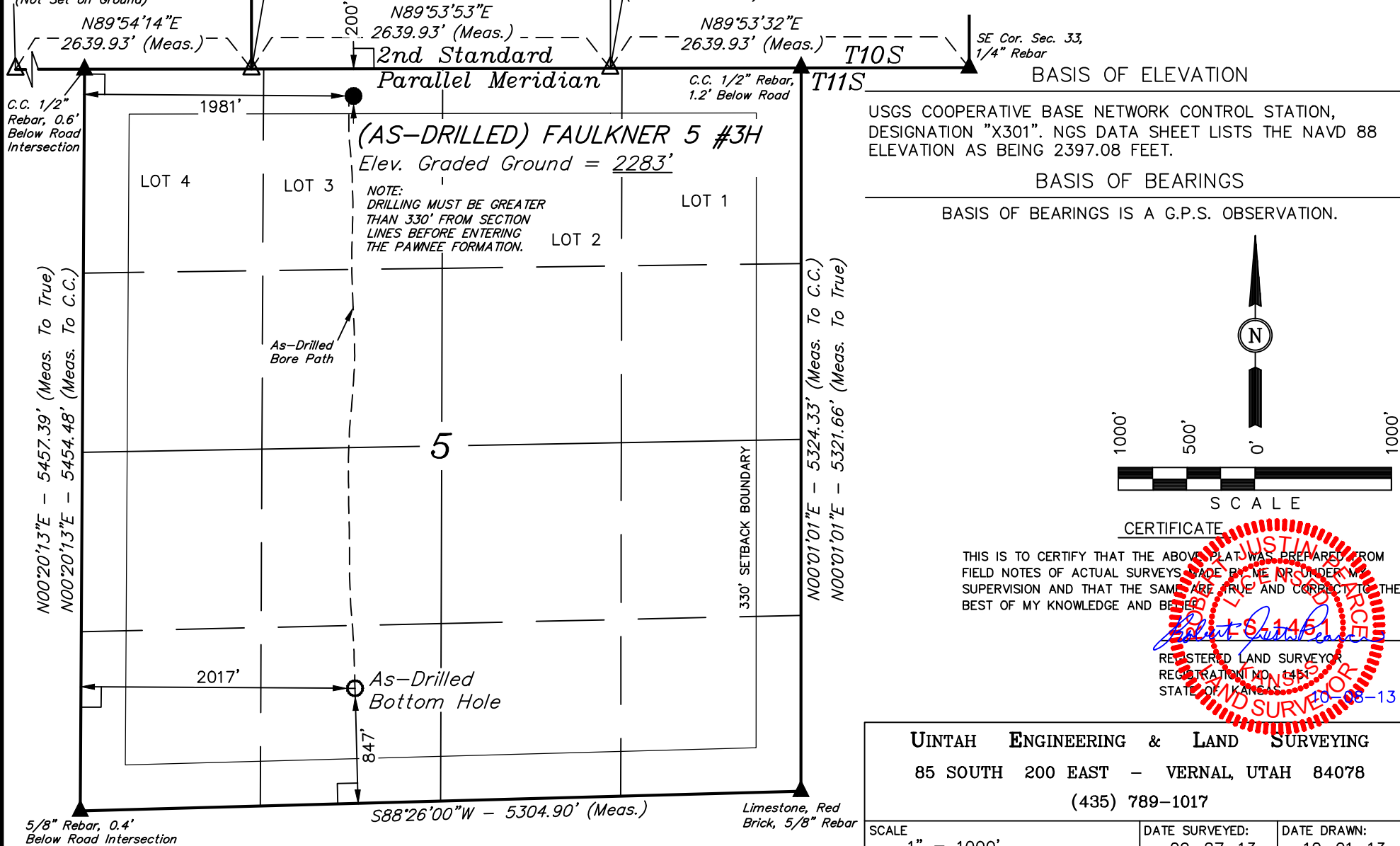
McELVAIN ENERGY, INC.

S 1/4 Cor. Sec. 32,
Re-Established Using
Curvature of 2nd Parallel
(Not Set on Ground)

SW Cor. Sec. 33,
Re-Established Using
Curvature of 2nd Parallel
(Not Set on Ground)

S 1/4 Cor. Sec. 33,
Re-Established Using
Curvature of 2nd Parallel
(Not Set on Ground)

Well location, (AS-DRILLED) FAULKNER 5 #3H,
located as shown in LOT 3 of Section 5,
T11S, R22W, 6th P.M., Trego County, Kansas.



CERTIFICATE

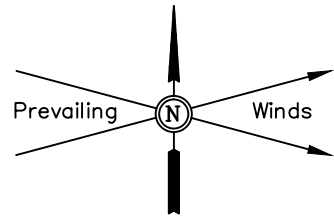
THIS IS TO CERTIFY THAT THE ABOVE PLAT WAS PREPARED FROM
FIELD NOTES OF ACTUAL SURVEYS MADE BY ME OR UNDER MY
SUPERVISION AND THAT THE SAME ARE TRUE AND CORRECT TO THE
BEST OF MY KNOWLEDGE AND BELIEF.

Robert S. 1451
REGISTERED LAND SURVEYOR
REGISTRATION NO. 1451
STATE OF KANSAS
10-08-13

UINTAH ENGINEERING & LAND SURVEYING
85 SOUTH 200 EAST - VERNAL, UTAH 84078
(435) 789-1017

NAD 83 (AS-DRILLED BOTTOM HOLE)	NAD 83 (AS-DRILLED SURFACE LOCATION)
LATITUDE = 39°07'10.79" (39.119664)	LATITUDE = 39°07'53.86" (39.131628)
LONGITUDE = 99°47'19.62" (99.788783)	LONGITUDE = 99°47'19.77" (99.788825)
NAD 27 (AS-DRILLED BOTTOM HOLE)	NAD 27 (AS-DRILLED SURFACE LOCATION)
LATITUDE = 39°07'10.76" (39.119656)	LATITUDE = 39°07'53.83" (39.131619)
LONGITUDE = 99°47'18.19" (99.788386)	LONGITUDE = 99°47'18.34" (99.788428)

SCALE 1" = 1000'	DATE SURVEYED: 09-27-13	DATE DRAWN: 10-01-13
PARTY C.B. J.P. S.S.	REFERENCES G.L.O. PLAT	
WEATHER COOL	FILE McELVAIN ENERGY, INC.	



McELVAIN ENERGY, INC.

AS-BUILT SITE PLAN FOR

FAULKNER 5 #3H

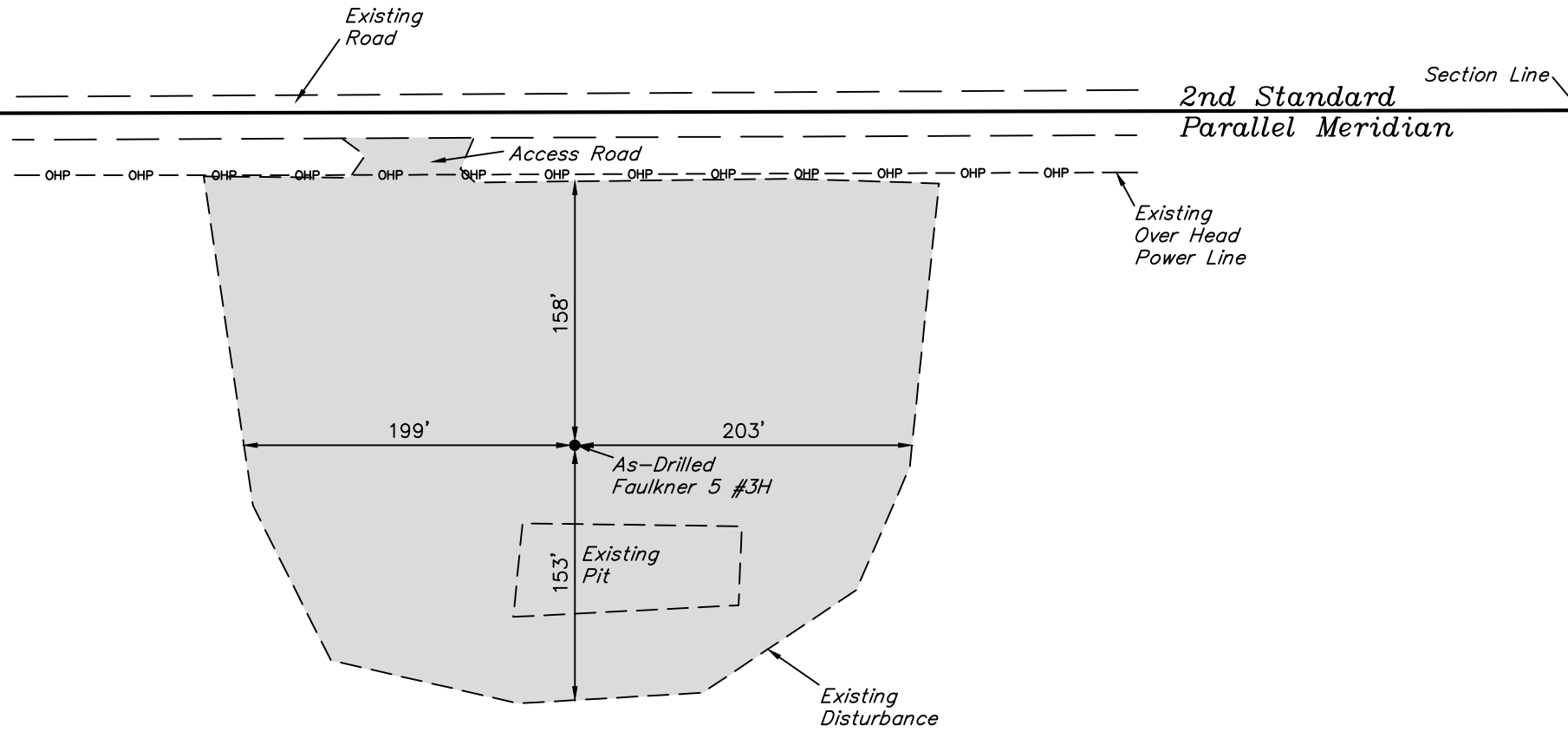
SECTION 5, T11S, R22W, 6th P.M.

200' FNL 1981' FWL

SCALE: 1" = 100'
DATE: 10-01-13
DRAWN BY: S.S.

Section 32
Section 33
SW Cor. Sec. 33,
Re-Established Using
Curvature of 2nd Parallel
(Not Set on Ground)

Section 33
Section 5



T10S
T11S

1/16 Section Line

1/4 Section Line

PAD DISTURBANCE = ± 2.673 ACRES
ROAD DISTURBANCE = ± 0.039 ACRES
TOTAL = ± 2.712 ACRES