

Woolsey Operating Company, LLC

Scale 1:240 (5"=100') Imperial
Measured Depth Log

Well Name: FORESTER E #2
Location: APPROX NE SW SW
License Number: API: 15-007-24015-00-00
Spud Date: April 25, 2013
Surface Coordinates: Section 34-T33S-R11W, 530' FSL, 460" FWL Roundup South
Bottom Hole Coordinates: Vertical Hole
Region: Barber County, Kansas
Drilling Completed: May 5, 2013

Ground Elevation (ft): 1350
Logged Interval (ft): 4000
Formation: McLish Sand
Type of Drilling Fluid: Chemical Mud, Displace at 3409'.
K.B. Elevation (ft): 1362
To: RTD
Total Depth (ft): 5070
 Printed by MUD.LOG from WellSight Systems 1-800-447-1534 www.WellSight.com

OPERATOR

Company: Woolsey Operating Company, LLC
Address: 125 N. Market, Suite 1000
 Wichita, KS 67202

GEOLOGIST

Name: W. Scott Alberg
Company: Alberg Petroleum, LLC
Address: 609 Meadowlark Lane
 Pratt, Kansas 67124

FORMATION TOPS

	SAMPLE TOPS	LOG TOPS
STARK SHALE	4241(-2879)	4241(-2879)
HUSHPUCKEY SHALE	4273(-2911)	4273(-2911)
B/KC	4329(-2967)	4330(-2968)
PAWNEE	4414(-3052)	4415(-3053)
CHEROKEE GROUP	4461(-3099)	4460(-3098)
MISSISSIPPIAN	4477(-3115)	4477(-3115)
KINDERHOOK SHALE	4701(-3339)	4700(-3338)
WOODFORD SHALE	4785(-3423)	4784(-3422)
VIOLA	4822(-3460)	4820(-3458)
SIMPSON SHALE	4914(-3552)	4913(-3551)
SIMPSON SAND	4932(-3510)	4934(-3512)
MCLISH SHALE	4984(-3622)	4985(-3620)
MCLISH SAND	5059(-3697)	5059(-3697)
LTD	5070(-3708)	5070(-3708)

COMMENTS

Surface Casing: Set 20' Conductor at 53'. Set 7 joints 13 3/8" at 306' with 300 sxs Class A, 2% gel, 3% cc, plug down at 11:00 am on April 28, 2013. Cement did Circulate.
Production Casing: None
Deviation Surveys: 1/2 - 307', 1/2 - 944', 3/4 - 1445', 1 - 1952', 1/4 - 2458', 3/4 - 2967', 1 - 3472', 1/2 - 3982', 1/2 - 4457', 1 - 5070'.
Contractor Bit Record:
 1- 17 1/2" out at 307'.
 2- 7 7/8" out at 4535'.
 3- 7 7/8" out at 5070'.
Pipe Strap at 4535'
 Board 4556.06'
 Strap 4552.36'
 Strap Short 3.70'

Gas Detector: Woolsey Operating Company, Trailer #1
Mud System: Mud Co, Brad Bortz, Engineer
DSTs: Tribolite Testing, Gary Porteaux, tester
 Logged by Pioneer Energy Services
 LTD - 5070'.

DSTs

DST #1 4482 to 4535' Times 30-60-60-120 Mississippi
1st Opening - Strong Blow BOB 75 seconds, GTS 21 minutes, no blow back
2nd Opening - Strong Blow, GTS, no blow back.
Recovery: Gas Gauge
 1st Opening 30 min 27 mcfpd
 2nd opening 10 min 27 mcfpd
 20 min 26 mcfpd
 30 min 26 mcfpd
 40 min 26 mcfpd
 50 min 26 mcfpd
 60 min 26 mcfpd
Fluid: 140' GCWM (12% G, 10% W, 78% M), 122' GCWM (9% G, 45% W, 46% M), 120' MW (9% W, 5% M) Chloride 111,000
IFP 40-94# FFP 74-139#
ISIP 235# FSP 228#
IHP 2184# FHP 2140#

CREWS

Fossil Drilling, Inc Rig #3
Tool Pusher - Craig Eubank
Drillers - Days - Daniel Orranta
Evening - Jim Wenrich
Morning - Andres Maestas

ROCK TYPES

Anhy	Sdy dolo	Lmst	Black sh
Bent	Shy dolo	Mrlst	Gry sh
Brc	Dol	Salt	Shale
Cht	Gyp	Sst	Shysiltst
Clyst	Sdy lmsst	Sst	Sitysh
Coal			

ACCESSORIES

Chlorite	Pelec	Grysh
Dol	Pellet	Lms
Sand	Pisolite	Gryslt
Silty	Plant	Lys
	Strom	Sandylms
	Fuss	Sh
	Oomoldic	Siltstn

MINERAL

Anhy	Arg	Bent	Bit
Brcfrag	Calc	Chtdk	Chttt
Dol	Ferrpel	Ferr	Glau
Marl	Nodule	Phos	Pyr
Salt	Sandy	Silt	

FOSSIL

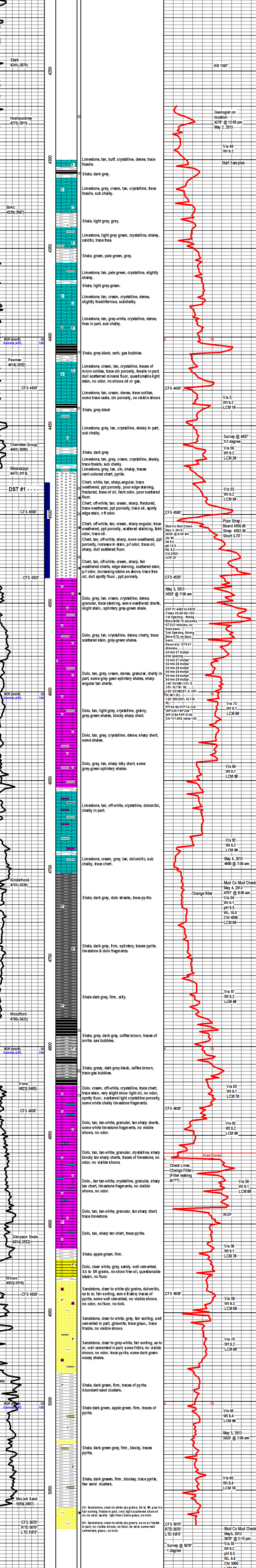
Algae	Amph	Belm	Bioclst
Brach	Bryozoa	Coral	Crin
Echin	Fish	Forum	Fossil
Gastro	Oolite	Ostra	

STRINGER

Anhy	Arg	Bent	Coal
Dol	Ls	Mrst	Siltstrg
Sststrg	Clystn	Dol	

TEXTURE

Boundst	Chalky	Cryln	Earthy
Finexh	Grainst	Lithogr	Mudoxln
Mudst	Packst	Wackst	



Curve Track 1
 ROP (min/ft) ———
 Gamma (API) - - - - -