



Office (620) 588-4250 212 Main St. • P.O. Box 215 • Clarita, KS 67525 Home (620) 587-3444  
 James C. Musgrove  
 Petroleum Geologist

# GEOLOGIST'S REPORT

DRILLING TIME AND SAMPLE LOG

COMPANY John Roy Evans Oil Co. LLC  
 LEASE Scheweis #3  
 FIELD Kraft-Prusa  
 LOCATION NW-SE-NE-SW (1800' FSL) (2100' FWL)  
 SEC. 32 TWP. 16s RGE. 11W  
 COUNTY Barton STATE KS  
 CONTRACTOR Royal Drilling Inc.  
 SPUD 8/2/13 COMP. 8-9-2013  
 RTD 3347 LTD 3345  
 MUD UP 2700 TYPE MUD Chemical  
 SAMPLES SAVED FROM 2800 TO TO  
 DRILLING TIME KEPT FROM 2800 TO TO  
 SAMPLES EXAMINED FROM 2800 TO RTD  
 GEOLOGICAL SUPERVISION FROM 2800 TO TO  
 GEOLOGIST ON WELL Wyatt Urban

ELEVATIONS  
 KB 1904  
 DF \_\_\_\_\_  
 CL 1897  
 Measurements Are All From KB

CASTING SURFACE 858 @ 759  
 PRODUCT ION \_\_\_\_\_  
 ELECTRICAL SURVEYS Ronnet Energy: Micro, DTL, DCP

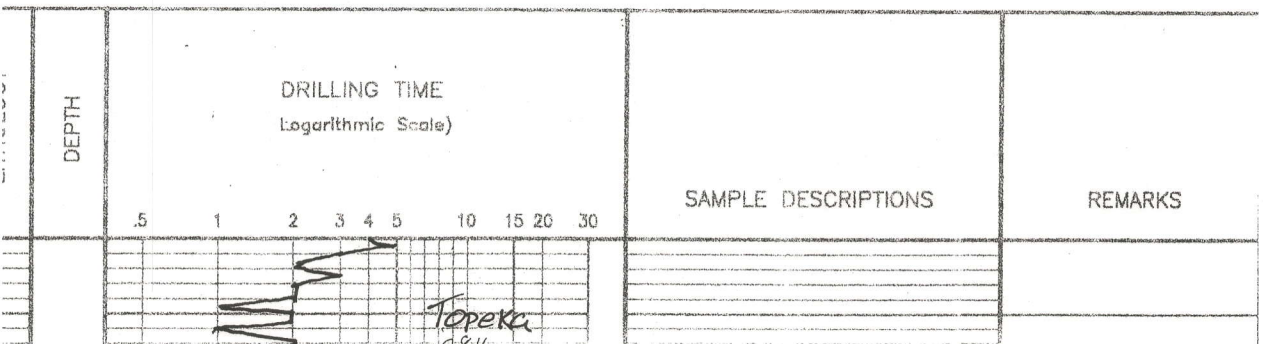
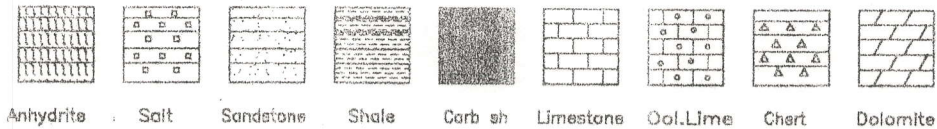
FORMATION TOPS	LOG	SAMPLES
Anhydrite	756	+1148
Base of Anhydrite	785	+1119
Topeka	2822	-918
Hebner	2950	-1046
Toronto	2964	-1060
Douglas	2978	-1074
Lansing	3061	-1160
Base of Kansas City	3317	-1413
Arbuckle	3335	-1431
RTN	3347	-1443

MARKS

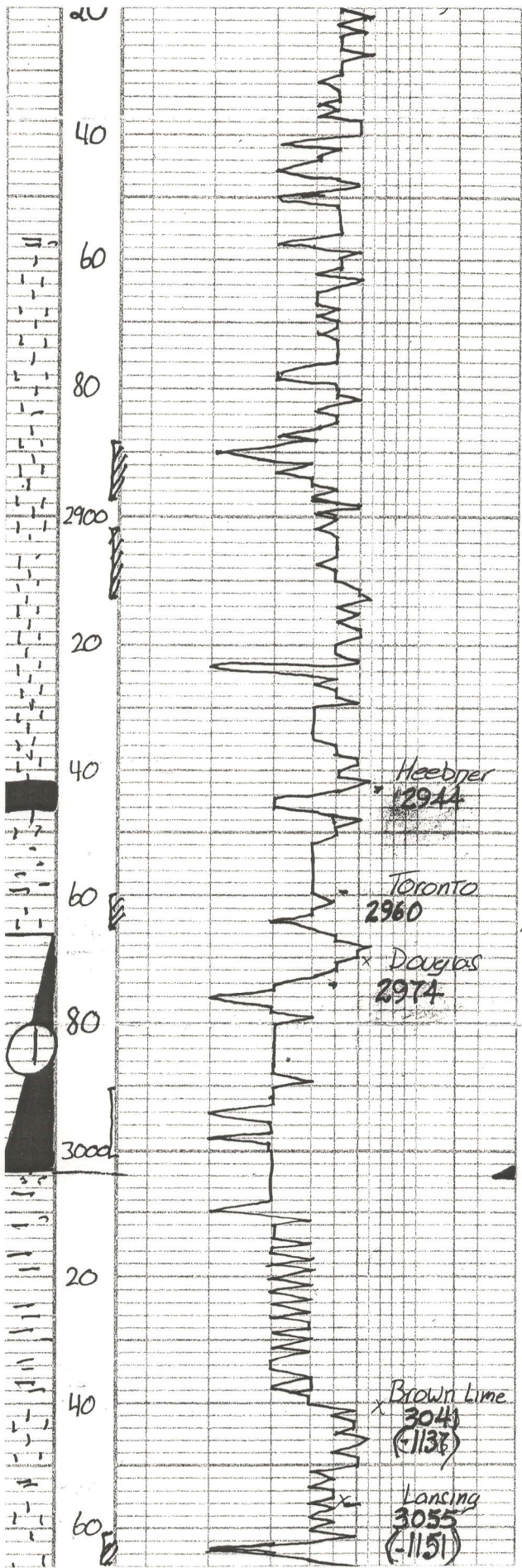
5 1/2" production casing was set & cemented on the Scheweis #3.

Respectfully submitted;  
 Wyatt Urban  
 Petroleum Geologist

## LEGEND

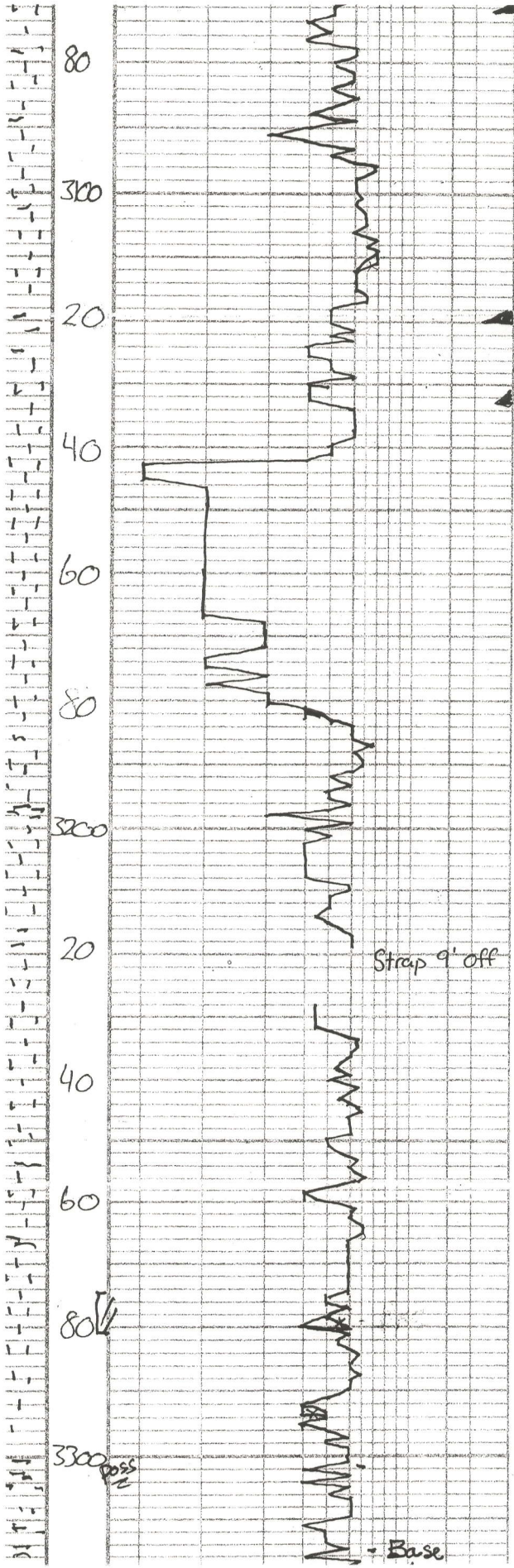






Vis $\phi$ , N/S.	
L.S. tan, Ool., Fxl, Dns.	
L.S. gry, Fxl, Foss, Poor Vis $\phi$ D'y.	
Sh. gry/bik, silty	
L.S. tan, Fxl, D'y, Chiky, Poor Scatt $\phi$	
L.S. Tan, brn, Fxl, P.C. Scatt $\phi$ Lt. Trc. brn str. N/S	
Sh. bik, gry	
L.S. gry Fxl, D'y Poor Vis $\phi$ N/S. N/O	
L.S. Tan, gran. mxl, Sndy, Lt. brn str, N/S, odor??	
L.S. Tan, gry, Fxl, Foss, Chiky N/S.	
LS, Tan, Fxl, Few Foss, poor Vis $\phi$ , Chiky, N/S.	
L.S. NA, + Trc. Pyrite, gry & bik sh.	
Bik carb sh.	
L.S. Tan, Fxl, Poor Scatt $\phi$ , Trc. Sfo, No odor.	
L.S. Tan, buff, Fxl, Poor Vis $\phi$ , Chiky Trc. Sfo, No odor.	DST #1 2966-30
L.S. A/A trc. gry sh.	30.45-45-60 Blow; Weak Recovery 10' Mud w/ Oil Spo
Sh. Mar, gry, bik, silty	Pressures
Sh. Mar, greenish, bik, Sndy	ISIP 59 psi
Gry F. gran. Snd, trc. Sfo, odor??	FSIP 53 psi
Sd. gry w. gran. Sfo, good carb.	IEP 12-15 psi
Lt. brn Spity str.	FFP 16-22 psi
	HSH 1396-1360 psi
Sh. Gry, bik (soft) B. Mar.	
A/A	
L.S. tan, brn, Fxl, Few Foss Poor Vis $\phi$ , N/S.	
L.S. Tan Fxl, poor Scatt $\phi$ , Lt. Sfo. Lt. anken brown str. Ft. carb.	





L.S. Crm, tan Fxl, Pr. Scatt  $\phi$   
 Ft. odor. Lt. Trc Stn, NSFO.

L.S. gry, tan, Fxl,  $\Delta y$  Dns,  
 Chiky poor vis  $\phi$ , N/S.

L.S. tan, gry, fxl, Poor Scatt  
 $\phi$ , Trc Sfo, Poor Stn, VFT odor.

L.S. A/A.

L.S. gry/tan, OOL, Fxl, Dns,  
 Poor vis  $\phi$ , NSFO, N/odor.  
 Lt. Trc. Stn.

L.S. tan, Crm, OOL, Poor Scatt  
 $\phi$  Lt. Brn Trc. Stn, NSFO, No odor.

L.S. Crm, Tan, OOL, good Vuggy  
 $\phi$ , Ft. odor, Vlt. Sfo. V. Chiky.

L.S. Crm, Tan, Fxl, OOL, Poor vis  
 $\phi$ , Trc. Lt. Stn. NSFO, odor??

L.S. Crm, tan, Fxl, Few Foss,  
 Poor Scatt  $\phi$ , N/S.

BIR, greenish sh.

L.S. Gry, Fxl,  $\Delta y$  Dns, Poor vis.  
 $\phi$ . N/S. N/odor.

L.S. Tan, gry fxl Poor vis  $\phi$   
 $\Delta y$  NSFO No odor.

L.S. Tan, brn, Fxl, OOL, Poor  
 Scatt  $\phi$ , NSFO, No odor.

L.S. Crm, Lt. brn, Fxl, Foss, Poor  
 vis  $\phi$ , NSFO, No odor.

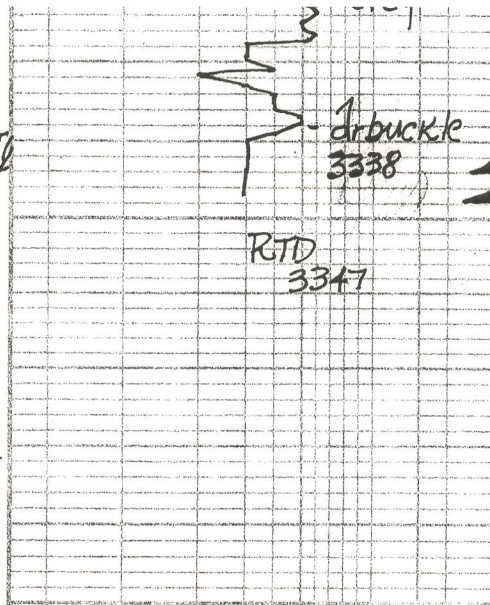
L.S. Crm, tan, Fxl, Poor vis  
 $\phi$ ,  $\Delta y$  Dns N/S.

L.S. OOL, Poor vis  $\phi$ , Dns,  
 No Stain, NSFO, No odor.

L.S. Crm, tan, Fxl, Poor Scatt  
 $\phi$ , Trc Sfo, Trc Stn., No odor.

Sh. BIR, Mar, greenish  
 Trc.  $\Delta$ , Wht  $\Delta$ , Pyr. N/S.

2  
40  
60  
80



L.S. tan, brn, Fxl, few foss,  
sh. gry mar. greenish clay  
sh. gry, blk, mar, t.c. Whit. f. op. g.  
Δ N.S.F.O. No odor.  
Dol. Whit, gry, Fxl, poor  
IXLN φ, D.S. Lt. S.F.O., good  
odor.  
Dol. Whit, gry, Fxl, Fr. IXLN  
φ, S.F.O., Lt. brn str. S.F.O. ●  
Strong odor.

Blow; BOB 2min,  
2nd Open; BOB 2min.  
Recovery  
950' Clean Gassy Oil  
(20% Gas, 80% Oil)  
120' GIP  
Pressures  
ISIP 1113 psi  
FSIP 1112"  
IFP 59-228"  
FFP 240-387"  
HSH 1593-1580