



TEMPORARY ABANDONMENT WELL APPLICATION

OPERATOR: License# _____
 Name: _____
 Address 1: _____
 Address 2: _____
 City: _____ State: _____ Zip: _____ + _____
 Contact Person: _____
 Phone: (_____) _____
 Contact Person Email: _____
 Field Contact Person: _____
 Field Contact Person Phone: (_____) _____

API No. 15- _____
 Spot Description: _____
 _____ - _____ - _____ - _____ Sec. _____ Twp. _____ S. R. _____ E W
 _____ feet from N / S Line of Section
 _____ feet from E / W Line of Section
 GPS Location: Lat: _____, Long: _____
(e.g. xx.xxxxx) (e.g. -xxx.xxxxx)
 Datum: NAD27 NAD83 WGS84
 County: _____ Elevation: _____ GL KB
 Lease Name: _____ Well #: _____
 Well Type: (check one) Oil Gas OG WSW Other: _____
 SWD Permit #: _____ ENHR Permit #: _____
 Gas Storage Permit #: _____
 Spud Date: _____ Date Shut-In: _____

	Conductor	Surface	Production	Intermediate	Liner	Tubing
Size						
Setting Depth						
Amount of Cement						
Top of Cement						
Bottom of Cement						

Casing Fluid Level from Surface: _____ How Determined? _____ Date: _____
 Casing Squeeze(s): _____ to _____ w / _____ sacks of cement, _____ to _____ w / _____ sacks of cement. Date: _____
(top) (bottom) (top) (bottom)
 Do you have a valid Oil & Gas Lease? Yes No
 Depth and Type: Junk in Hole at _____ Tools in Hole at _____ Casing Leaks: Yes No Depth of casing leak(s): _____
(depth) (depth)
 Type Completion: ALT. I ALT. II Depth of: DV Tool: _____ w / _____ sacks of cement Port Collar: _____ w / _____ sack of cement
(depth) (depth)
 Packer Type: _____ Size: _____ Inch Set at: _____ Feet
 Total Depth: _____ Plug Back Depth: _____ Plug Back Method: _____

Geological Data:

Formation Name	Formation Top	Formation Base	Completion Information
1. _____	At: _____	to _____ Feet	Perforation Interval _____ to _____ Feet or Open Hole Interval _____ to _____ Feet
2. _____	At: _____	to _____ Feet	Perforation Interval _____ to _____ Feet or Open Hole Interval _____ to _____ Feet

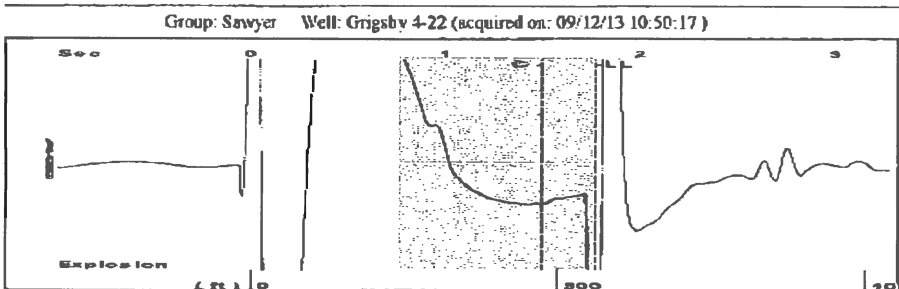
UNDER PENALTY OF PERJURY I HEREBY ATTEST THAT THE INFORMATION CONTAINED HEREIN IS TRUE AND CORRECT TO THE BEST OF MY KNOWLEDGE

Submitted Electronically

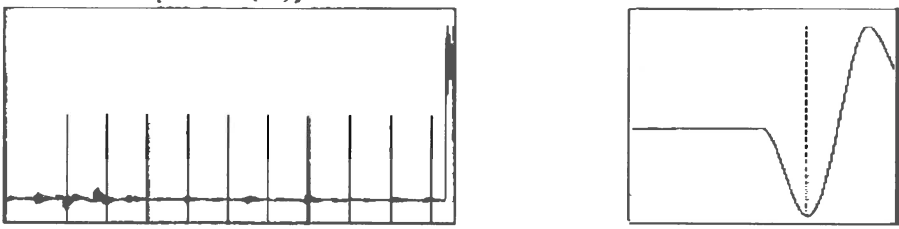
Do NOT Write in This Space - KCC USE ONLY	Date Tested: _____	Results: _____	Date Plugged: _____	Date Repaired: _____	Date Put Back in Service: _____
	Review Completed by: _____ Comments: _____				
TA Approved: <input type="checkbox"/> Yes <input type="checkbox"/> Denied Date: _____					

Mail to the Appropriate KCC Conservation Office:

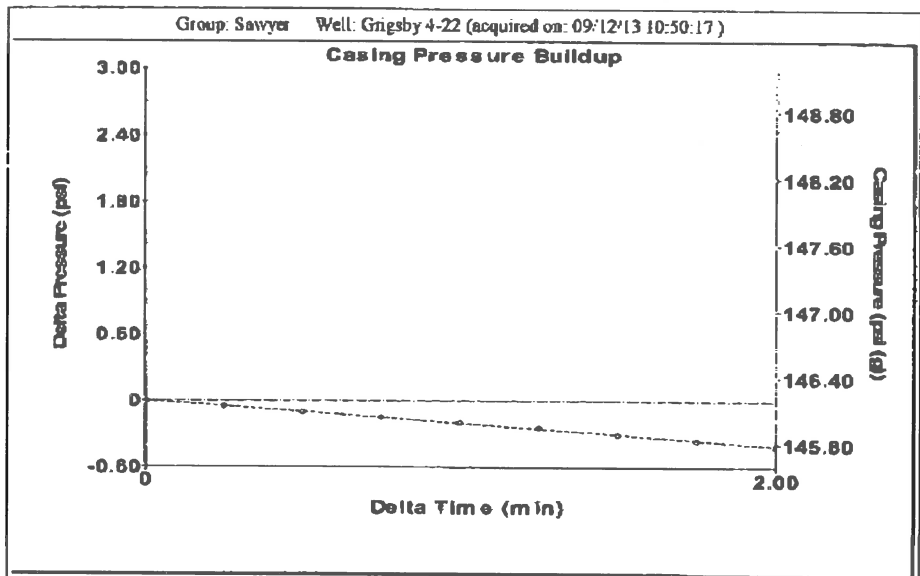
	KCC District Office #1 - 210 E. Frontview, Suite A, Dodge City, KS 67801	Phone 620.225.8888
	KCC District Office #2 / UPGS - 3450 N. Rock Road, Building 600, Suite 601, Wichita, KS 67226	Phone 316.630.4000
	KCC District Office #3 - 1500 SW Seventh Steet, Chanute, KS 66720	Phone 620.432.2300
	KCC District Office #4 - 2301 E. 13th Street, Hays, KS 67601-2651	Phone 785.625.0550



Filter Type High Pass Automatic Collar Count Yes Time 1.773 sec
 Manual Acoustic Velo 703.663 ft/s Manual JTS/sec 11.0988 Joints 17.73 Jts
 Depth 562.04 ft



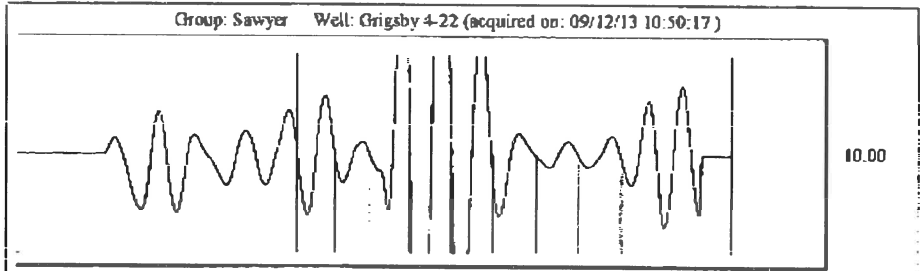
Analysis Method: Automatic



Change in Pressure -0.41 psi PT13440
 Change in Time 2.00 min Range 0 - ? psi

Group: Sawyer Well: Grigsby 4-22 (acquired on: 09/12/13 10:50:17)

Production	Potential	Casing Pressure		Producing
Current		146.2 psi (g)		Annular
Oil .-. BBL/D		Casing Pressure Buildup		Gas Flow
Water .-. BBL/D		-0.4 psi		-.-. Mscf/D
Gas .-. Mscf/D		2.00 min		% Liquid
		Gas/Liquid Interface Pressure		100 %
IPR Method Vogel		150.7 psi (g)		
PBHP/SBHP				
Production Efficiency 0.0		Liquid Level Depth		
		562.04 ft		
Oil 40 deg.API		Pump Intake Depth		
Water 1.05 Sp.Gr.H2O		-.-. ft		
Gas 1.26 Sp.Gr.AIR		Formation Depth		
		4590.00 ft		
Acoustic Velocity 634 ft/s				
		Pump Intake		
		-.-. psi (g)		
		Producing BHP		
		1982.0 psi (g)		
		Static BHP		
		-.-. psi (g)		
Formation Submergence				
Total Gaseous Liquid Column HT (TVD)		4028 ft		
Equivalent Gas Free Liquid HT (TVD)		4028 ft		
Acoustic Test				



Acoustic Velocity 634 ft/s Joints counted 8
 Joints Per Second 10 jts/sec Joints to liquid level 17.73
 Depth to liquid level 562.04 ft Filter Width 9.09878 13.0988
 Automatic Collar Count Yes Time to 1st Collar 0.7 1.5

Conservation Division
District Office No. 1
210 E. Frontview, Suite A
Dodge City, KS 67801



Phone: 620-225-8888
Fax: 620-225-8885
<http://kcc.ks.gov/>

Mark Sievers, Chairman
Thomas E. Wright, Commissioner
Shari Feist Albrecht, Commissioner

Sam Brownback, Governor

September 19, 2013

Rebecca George
F. G. Holl Company L.L.C.
9431 E CENTRAL STE 100
WICHITA, KS 67206-2563

Re: Temporary Abandonment
API 15-007-20292-00-00
GRIGSBY 1-22
NW/4 Sec.22-30S-13W
Barber County, Kansas

Dear Rebecca George:

Your application for Temporary Abandonment (TA) of the above-listed well is denied for the following reasons(s):

HGFLD - High fluid level

In accordance with K.A.R. 82-3-111, this well must be plugged or returned to service by October 19, 2013.

Sincerely,

Steve Pfeifer