



Confidentiality Requested:

Yes  No

KANSAS CORPORATION COMMISSION 1157075  
OIL & GAS CONSERVATION DIVISION

Form ACO-1

August 2013

Form must be Typed  
Form must be Signed  
All blanks must be Filled

WELL COMPLETION FORM  
WELL HISTORY - DESCRIPTION OF WELL & LEASE

OPERATOR: License # \_\_\_\_\_

Name: \_\_\_\_\_

Address 1: \_\_\_\_\_

Address 2: \_\_\_\_\_

City: \_\_\_\_\_ State: \_\_\_\_\_ Zip: \_\_\_\_\_ + \_\_\_\_\_

Contact Person: \_\_\_\_\_

Phone: ( \_\_\_\_\_ ) \_\_\_\_\_

CONTRACTOR: License # \_\_\_\_\_

Name: \_\_\_\_\_

Wellsite Geologist: \_\_\_\_\_

Purchaser: \_\_\_\_\_

Designate Type of Completion:

- New Well       Re-Entry       Workover
- Oil       WSW       SWD       SIOW
- Gas       D&A       ENHR       SIGW
- OG       GSW       Temp. Abd.
- CM (Coal Bed Methane)
- Cathodic       Other (Core, Expl., etc.): \_\_\_\_\_

If Workover/Re-entry: Old Well Info as follows:

Operator: \_\_\_\_\_

Well Name: \_\_\_\_\_

Original Comp. Date: \_\_\_\_\_ Original Total Depth: \_\_\_\_\_

- Deepening       Re-perf.       Conv. to ENHR       Conv. to SWD
- Plug Back       Conv. to GSW       Conv. to Producer
- Commingled      Permit #: \_\_\_\_\_
- Dual Completion      Permit #: \_\_\_\_\_
- SWD      Permit #: \_\_\_\_\_
- ENHR      Permit #: \_\_\_\_\_
- GSW      Permit #: \_\_\_\_\_

Spud Date or Recompletion Date	Date Reached TD	Completion Date or Recompletion Date
-----------------------------------	-----------------	---

API No. 15 - \_\_\_\_\_

Spot Description: \_\_\_\_\_

\_\_\_\_\_ - \_\_\_\_\_ - \_\_\_\_\_ Sec. \_\_\_\_\_ Twp. \_\_\_\_\_ S. R. \_\_\_\_\_  East  West

\_\_\_\_\_ Feet from  North /  South Line of Section

\_\_\_\_\_ Feet from  East /  West Line of Section

Footages Calculated from Nearest Outside Section Corner:

- NE       NW       SE       SW

GPS Location: Lat: \_\_\_\_\_, Long: \_\_\_\_\_  
(e.g. xx.xxxxx) (e.g. -xxx.xxxxx)

Datum:  NAD27       NAD83       WGS84

County: \_\_\_\_\_

Lease Name: \_\_\_\_\_ Well #: \_\_\_\_\_

Field Name: \_\_\_\_\_

Producing Formation: \_\_\_\_\_

Elevation: Ground: \_\_\_\_\_ Kelly Bushing: \_\_\_\_\_

Total Vertical Depth: \_\_\_\_\_ Plug Back Total Depth: \_\_\_\_\_

Amount of Surface Pipe Set and Cemented at: \_\_\_\_\_ Feet

Multiple Stage Cementing Collar Used?  Yes  No

If yes, show depth set: \_\_\_\_\_ Feet

If Alternate II completion, cement circulated from: \_\_\_\_\_

feet depth to: \_\_\_\_\_ w/ \_\_\_\_\_ sx cmt.

Drilling Fluid Management Plan

(Data must be collected from the Reserve Pit)

Chloride content: \_\_\_\_\_ ppm Fluid volume: \_\_\_\_\_ bbls

Dewatering method used: \_\_\_\_\_

Location of fluid disposal if hauled offsite:

Operator Name: \_\_\_\_\_

Lease Name: \_\_\_\_\_ License #: \_\_\_\_\_

Quarter \_\_\_\_\_ Sec. \_\_\_\_\_ Twp. \_\_\_\_\_ S. R. \_\_\_\_\_  East  West

County: \_\_\_\_\_ Permit #: \_\_\_\_\_

AFFIDAVIT

I am the affiant and I hereby certify that all requirements of the statutes, rules and regulations promulgated to regulate the oil and gas industry have been fully complied with and the statements herein are complete and correct to the best of my knowledge.

Submitted Electronically

KCC Office Use ONLY

- Confidentiality Requested  
Date: \_\_\_\_\_
- Confidential Release Date: \_\_\_\_\_
- Wireline Log Received
- Geologist Report Received
- UIC Distribution
- ALT  I  II  III Approved by: \_\_\_\_\_ Date: \_\_\_\_\_



1157075

Operator Name: \_\_\_\_\_ Lease Name: \_\_\_\_\_ Well #: \_\_\_\_\_

Sec. \_\_\_\_\_ Twp. \_\_\_\_\_ S. R. \_\_\_\_\_  East  West County: \_\_\_\_\_

**INSTRUCTIONS:** Show important tops of formations penetrated. Detail all cores. Report all final copies of drill stems tests giving interval tested, time tool open and closed, flowing and shut-in pressures, whether shut-in pressure reached static level, hydrostatic pressures, bottom hole temperature, fluid recovery, and flow rates if gas to surface test, along with final chart(s). Attach extra sheet if more space is needed.

Final Radioactivity Log, Final Logs run to obtain Geophysical Data and Final Electric Logs must be emailed to kcc-well-logs@kcc.ks.gov. Digital electronic log files must be submitted in LAS version 2.0 or newer AND an image file (TIFF or PDF).

Drill Stem Tests Taken <input type="checkbox"/> Yes <input type="checkbox"/> No <i>(Attach Additional Sheets)</i>  Samples Sent to Geological Survey <input type="checkbox"/> Yes <input type="checkbox"/> No  Cores Taken <input type="checkbox"/> Yes <input type="checkbox"/> No Electric Log Run <input type="checkbox"/> Yes <input type="checkbox"/> No  List All E. Logs Run: _____	<input type="checkbox"/> Log Formation (Top), Depth and Datum <input type="checkbox"/> Sample  Name Top Datum
--	---

CASING RECORD <input type="checkbox"/> New <input type="checkbox"/> Used							
Report all strings set-conductor, surface, intermediate, production, etc.							
Purpose of String	Size Hole Drilled	Size Casing Set (In O.D.)	Weight Lbs. / Ft.	Setting Depth	Type of Cement	# Sacks Used	Type and Percent Additives

ADDITIONAL CEMENTING / SQUEEZE RECORD				
Purpose:	Depth Top Bottom	Type of Cement	# Sacks Used	Type and Percent Additives
<input type="checkbox"/> Perforate <input type="checkbox"/> Protect Casing <input type="checkbox"/> Plug Back TD <input type="checkbox"/> Plug Off Zone				

Did you perform a hydraulic fracturing treatment on this well?  Yes  No *(If No, skip questions 2 and 3)*

Does the volume of the total base fluid of the hydraulic fracturing treatment exceed 350,000 gallons?  Yes  No *(If No, skip question 3)*

Was the hydraulic fracturing treatment information submitted to the chemical disclosure registry?  Yes  No *(If No, fill out Page Three of the ACO-1)*

Shots Per Foot	PERFORATION RECORD - Bridge Plugs Set/Type Specify Footage of Each Interval Perforated	Acid, Fracture, Shot, Cement Squeeze Record <i>(Amount and Kind of Material Used)</i>	Depth

TUBING RECORD:      Size: \_\_\_\_\_ Set At: \_\_\_\_\_ Packer At: \_\_\_\_\_ Liner Run:  Yes  No

Date of First, Resumed Production, SWD or ENHR. \_\_\_\_\_ Producing Method:  
 Flowing  Pumping  Gas Lift  Other *(Explain)* \_\_\_\_\_

Estimated Production Per 24 Hours	Oil Bbls.	Gas Mcf	Water Bbls.	Gas-Oil Ratio	Gravity

<b>DISPOSITION OF GAS:</b> <input type="checkbox"/> Vented <input type="checkbox"/> Sold <input type="checkbox"/> Used on Lease <i>(If vented, Submit ACO-18.)</i>	<b>METHOD OF COMPLETION:</b> <input type="checkbox"/> Open Hole <input type="checkbox"/> Perf. <input type="checkbox"/> Dually Comp. <input type="checkbox"/> Commingled <i>(Submit ACO-5)</i> <input type="checkbox"/> Other <i>(Specify)</i> _____ <i>(Submit ACO-4)</i>	<b>PRODUCTION INTERVAL:</b> _____ _____
--	---	---

Form	ACO1 - Well Completion
Operator	Lasso Energy LLC
Well Name	Bair 1
Doc ID	1157075

All Electric Logs Run

Halliburton: MRIL
Halliburton: Micro Log
Halliburton: Borehole Volume Caliper Log
Halliburton: ACRT Log
Halliburton: DSNT, SDLT
LogTech of Kansas: Cement Bond Log

Form	ACO1 - Well Completion
Operator	Lasso Energy LLC
Well Name	Bair 1
Doc ID	1157075

Tops

Name	Top	Datum
Iatan	1805	-443
Stalnaker	1835	-473
Perry	2006	-644
Layton	2237	-875
Kansas City	2400	-1038
Base Kansas City	2558	-1196
Marmaton Group	2623	-1261
Cherokee	2767	-1405
Cattleman	2865	-1503
Mississippian Chert	3038	-1676
Mississippian Lime	3050	-1688
Kinderhook	3482	-2120
Arbuckle	3541	-2122

Form	ACO1 - Well Completion
Operator	Lasso Energy LLC
Well Name	Bair 1
Doc ID	1157075

Perforations

Shots Per Foot	Perforation Record	Material Record	Depth
2	Arbuckle Formation - Perforation	2 Shots	3486-3486.5
0	Acid	200 gal 15% NE-FE Acid	3486-3486.5
0	Bridge Plug Set	7,000 PSIG CIBP	3475
1	Mississippi Lime - Perforation	2 Shots	3218-3219
0	Acid	750 gal 15% NE-FE Acid	3218-3219
0	Bridge Plug Set	7,000 PSIG CIBP	3215
1	Mississippi Lime - Perforation	4 Shots	3208-3211
0	Acid	750 gal 15% NE-FE Acid	3208-3211
0	Bridge Plug Set	7,000 PSIG CIBP	3205
1	Mississippi Lime - Perforation	5 Shots	3192-3196
0	Acid	750 gal 15% NE-FE Acid	3192-3196
0	Bridge Plug Set	7,000 PSIG CIBP	3180
1	Mississippi Lime - Perforation	9 Shots	3063-3077
2	Mississippi Chert/Chat - Perforation	13 Shots	3040-3046
0	Acid	1200gal 10% HCL, 1200 gal MCA	3040-3077
0	Acid Retreat	3000gal 10% HCl, NE-FE acid	3040-3044

Form	ACO1 - Well Completion
Operator	Lasso Energy LLC
Well Name	Bair 1
Doc ID	1157075

Perforations

Shots Per Foot	Perforation Record	Material Record	Depth
0	Fracture	9,043 bbl Slickwater, 172,000 lbs Proppant	3040-3077
1	Mississippi Lime - Perforation	24 Shots	3081-3108



Scale 1:240 Imperial

Well Name: Bair #1  
 Surface Location: 660' FSL and 660' FWL  
 Bottom Location:  
 API: 15-035-24513-0000  
 License Number: 34320  
 Spud Date: 8/28/2013 Time: 1:00 AM  
 Region: Sec. 23 - T32S - R06E, Cowley County  
 Drilling Completed: 9/1/2013 Time: 7:45 PM  
 Surface Coordinates:  
 Bottom Hole Coordinates:  
 Ground Elevation: 1354.00ft  
 K.B. Elevation: 1362.00ft  
 Logged Interval: 1750.00ft To: 3541.00ft  
 Total Depth: 3541.00ft  
 Formation: Mississippian  
 Drilling Fluid Type: Chemical/Fresh Water Gel

### OPERATOR

Company: Lasso Energy, LLC  
 Address: P.O. Box 465  
 1125 S. Main St.  
 Chase, KS 67524  
 Contact Geologist: Bruce Kelso  
 Contact Phone Nbr: 918.633.9655  
 Well Name: Bair #1  
 Location: 660' FSL and 660' FWL API: 15-035-24513-0000  
 Pool: Lorton  
 State: Kansas Country: USA

### LOGGED BY



Company: Valhalla Exploration, LLC  
 Address: 8100 E. 22nd St. North  
 Building 1800-2  
 Wichita, KS 67226  
 Phone Nbr: 316.655.3550  
 Logged By: Geologist Name: Derek W. Patterson

### REMARKS

After review of the geologic report and open hole logs for the Bair #1, it was decided upon by operator to run 5 1/2" production casing for further evaluation of said well.

Note: drill time, lithology, and gas curves have been shifted 2' shallow/higher to correspond with the electric log curves. All circulation and connections points have also been moved to match the overall shift.

The well samples were saved, submitted, and will be available for review at the Kansas Geologic Survey's Well Sample Library located in Wichita, KS.

Respectfully Submitted,

Derek W. Patterson

### GENERAL INFORMATION

#### Service Companies

Drilling Contractor: Fossil Drilling - Rig #2  
 Tool Pusher: Glen Holmes  
 Day Driller: Kevin Clift  
 Night Driller: Miguel Molina

Drilling Fluid: Mud-Co/Service Mud Inc.  
 Engineers: Brad Bortz

Logging Company: Halliburton  
 Engineer: James Bollum

Gas Testem: Bluestem Environmental  
 Engineer: Sidney Edelbrock  
 Unit: 0574  
 Operational By: 436'

Logs Ran: DI, CDNL, Micro, MRIL

Testing Company: No DSTs

Deviation Survey	
Depth	Survey
342'	3/4°
998'	1/4°
1562'	1°
2254'	1°
2757'	2 1/4° - Possible Misrun
3040'	1 1/2°
RTD - 3541'	1 3/4°

Pipe Strap	
Depth	Pipe Strap
None Performed	

Bit Record								
Bit #	Size	Make	Type	Serial Number	Depth In	Depth Out	Feet	Hours
1	12 1/4"	Rock	RR	--	0'	342'	342'	8.75
2	7 7/8"	Ultera	U516M	18388	342'	3541'	3199'	54

Surface Casing	
8.28.2013	Ran 8 joints of new 23#/ft 8 5/8" casing, set @ 339' KB. Cemented with 220 sacks 60/40 Poz. Cement did circulate. Plug down @ 2000 hrs 8.28.13. By Basic Energy Services.

Production Casing	
9.2.2013	Ran 84 joints of new 15.5 #/ft 5 1/2" production casing, tallying 3531.63', set @ 3539.5' KB. Cemented with 225 sacks AA-2. Cement did circulate. Plug down @ 2120 hrs 9.2.13. By Basic Energy Services.

### DAILY DRILLING REPORT

Date	0700 Hrs Depth	Previous 24 Hours of Operations
8.31.2013	2946'	Drilling and connections latan, Stalnaker, Perry, Kansas City, and into Base Kansas City. Geologist Derek W. Patterson on location 245 hrs 8.30.13. Resume drilling and connections Base Kansas City, Marmaton Group, and into Cherokee. Made 1194' over past 24 hrs of operations. WOB: 10-12k RPM: 70-80 PP: 700/750 SPM: 58 DMC: \$3,816.65 CMC: \$4,140.45
9.1.2013	3255'	Drilling and connections Cherokee. Stop @ 3018' to clean up hole before penetrating Mississippian. Resume drilling and connections Cherokee. Rig down @ 1000 hrs 8.31.13 for geograph line repairs. Resume drilling and connections Cherokee and into Mississippian 1710 hrs 8.31.13. Drill 1 kelly, geograph line still nonoperational. Drill an additional 2 joints while holding geograph line for tension. Rig down to replace spring in geograph line. Resume drilling and connections Mississippian. Made 309' over past 24 hrs of operations. WOB: 6-14k RPM: 65-80 PP: 750 SPM: 57-58 DMC: \$4,725.30 CMC: \$8,865.75
9.2.2013	RTD - 3541' LTD - 3541'	Drilling and connections Mississippian, Kinderhook, and into Arbuckle. Drilling and connections Arbuckle ahead to RTD of 3541'. RTD reached 1945 hrs 9.1.13. CTCH. Conduct 21 stand short trip. CTCH back on bottom. Drop survey, TOH for open hole logging operations 2335 hrs 9.1.13. Rig up loggers. Conduct open hole logging operations. Made 286' over past 24 hrs of operations. WOB: 14k RPM: 65-80 PP: 750 SPM: 57-58 DMC: \$2,139.45 CMC: \$11,005.20
9.3.2013	RTD - 3541' LTD - 3541'	Geologist Derek W. Patterson off location 0715 hrs 9.2.13. Conclude open hole logging operations. Orders received to run 5 1/2" production casing for further evaluation of the Bair #1. DMC: \$1,048.55 CMC: \$12,053.75

### WELL COMPARISON SHEET

Drilling Well	Comparison Well	Comparison Well
Lasso Energy - Bair #1 Sec. 23 - T32S - R06E C SW SW	Abderhalden - Lorton #5 Sec. 23 - T32S - R06E NE SW SW	Olympic Petroleum - Lorton Estate #1 Sec. 23 - T32S - R06E SW SW SW
	Oil - Mississippian	Structural
	Oil - Cattleman	Structural



	1362 KB				1354 KB				1349 KB			
Formation	Sample	Sub-Sea	Log	Sub-Sea	Log	Sub-Sea	Sample	Log	Log	Sub-Sea	Sample	Log
Iatan	1803	-441	1805	-443	1803	-449	8	6	1800	-451	10	8
Stalnaker	1834	-472	1835	-473	1832	-478	6	5	1830	-481	9	8
Perry	2008	-646	2006	-644	2004	-650	4	6	2000	-651	5	7
Layton	2240	-878	2237	-875	2235	-881	3	6	Not Called		N/A	
Kansas City	2404	-1042	2400	-1038	2406	-1052	10	14	Not Called		N/A	
Base Kansas City	2559	-1197	2557	-1195	2561	-1207	10	12	2548	-1199	2	4
Marmaton Group	2625	-1263	2623	-1261	2628	-1274	11	13	2617	-1268	5	7
Cherokee	2767	-1405	2767	-1405	2771	-1417	12	12	2760	-1411	6	6
Cattleman	Not Called		2865	-1503	2873	-1519	N/A	16	2855	-1506	N/A	3
Mississippian Chert	3040	-1678	3034	-1672	3035	-1681	3	9	3016	-1667	-11	-5
Mississippian Lime	3048	-1686	3050	-1688	3044	-1690	4	2	3030	-1681	-5	-7
Kinderhook	3471	-2109	3482	-2120	Not Penetrated				Not Penetrated			
Arbuckle	3475	-2113	3484	-2122	Not Penetrated				Not Penetrated			
Total Depth	3541	-2179	3541	-2179	3140	-1786	-393	-393	3050	-1701	-478	-478

### ROCK TYPES

Cht	LMST1	Ss	SHALE GRN
DOL1	LMST2	SILTSTONE	SHALE GRA
DOL2	LMST3	SHALE BRN	SHALE PUR
DOL4	LMST4	SHALE CAR	SHALE RED

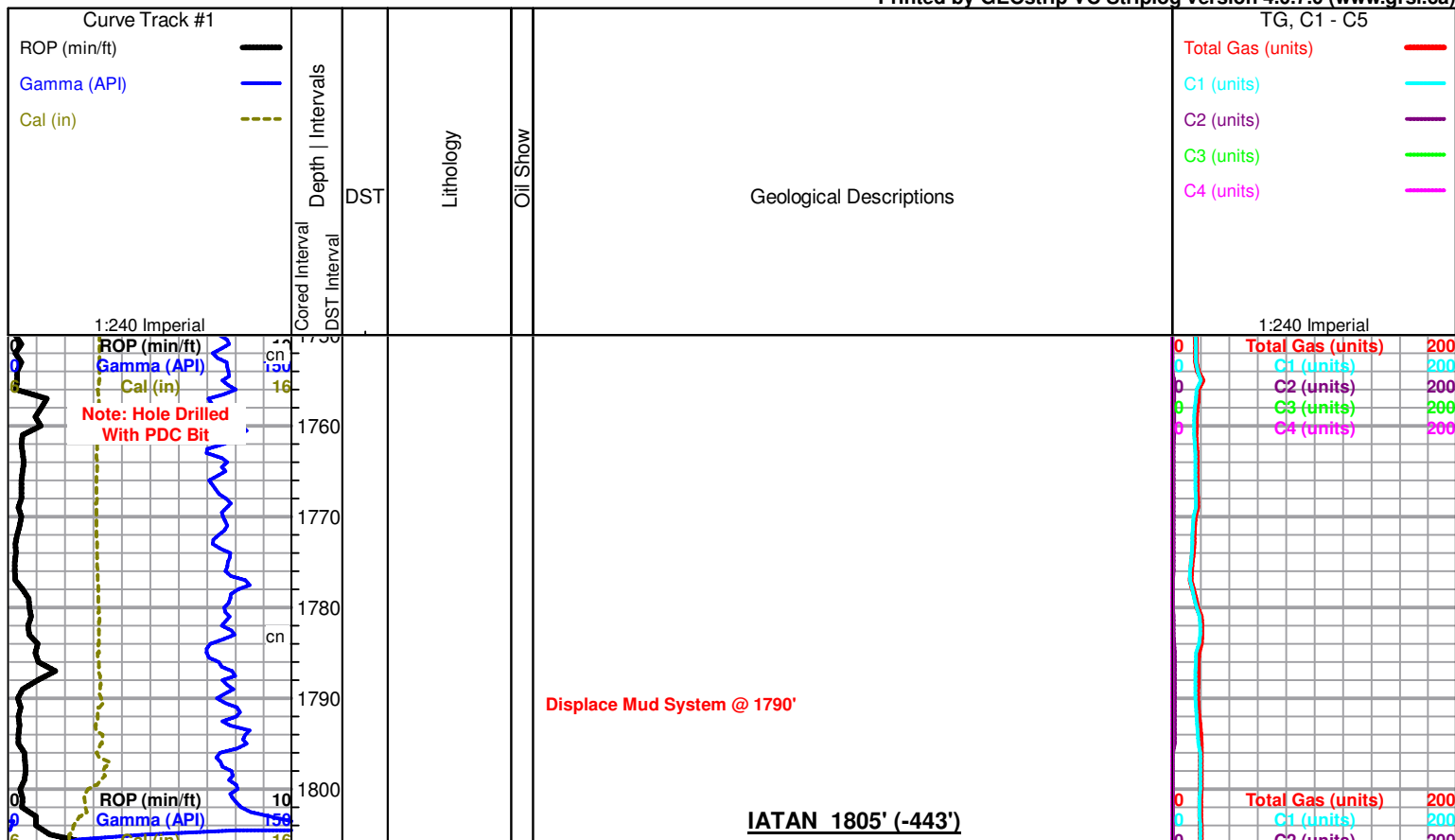
### ACCESSORIES

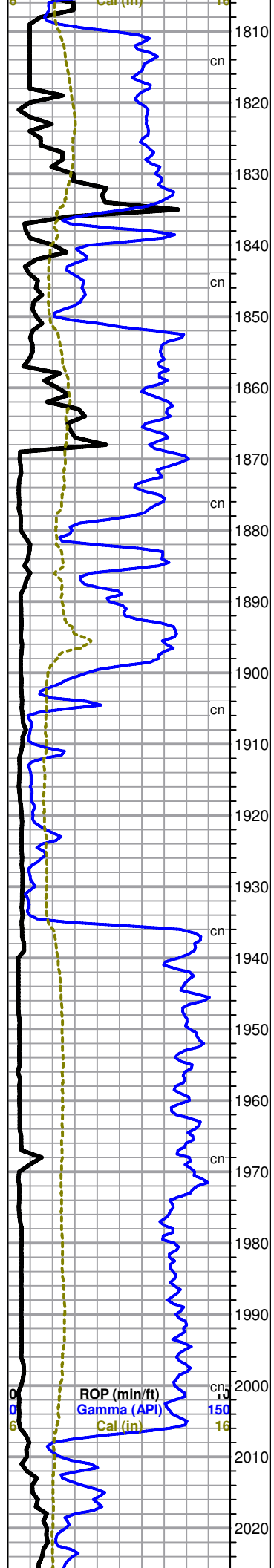
<b>MINERAL</b>	<b>FOSSIL</b>	<b>TEXTURE</b>
— Argillaceous	F Fossils < 20%	C Chalky
▲ Chert, dark	⊘ Oolite	L Lithogr
∟ Dolomitic	⊘ Pellets	
∩ Glauconite		
P Pyrite		
• Sandy		
• Silty		
△ Chert White		
Mc Mica		

### OTHER SYMBOLS

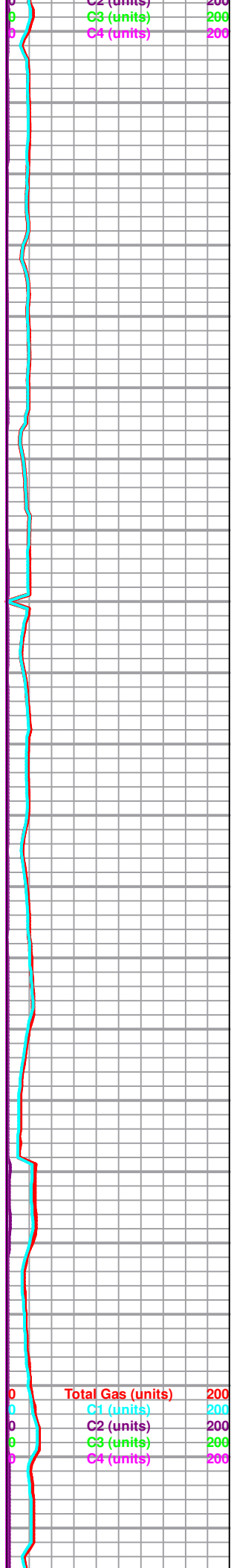
<b>DST</b>
DST1
DST2
DST3
Core
tail pipe

Printed by GEOstrip VC Striplog version 4.0.7.0 (www.grsi.ca)

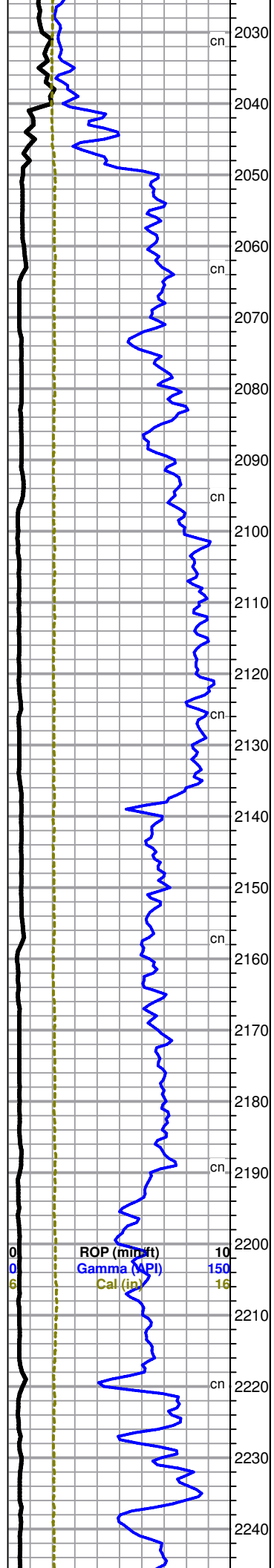




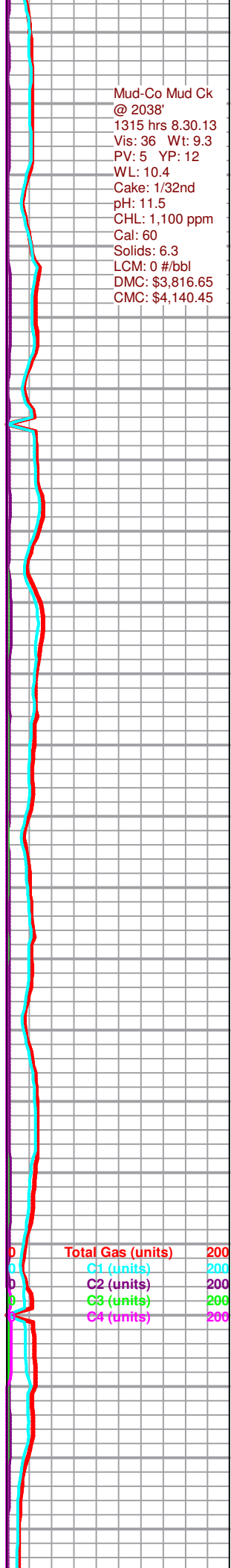
**STALNAKER 1835' (-473')**



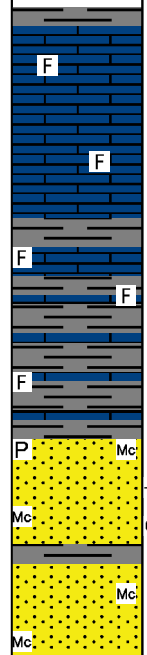
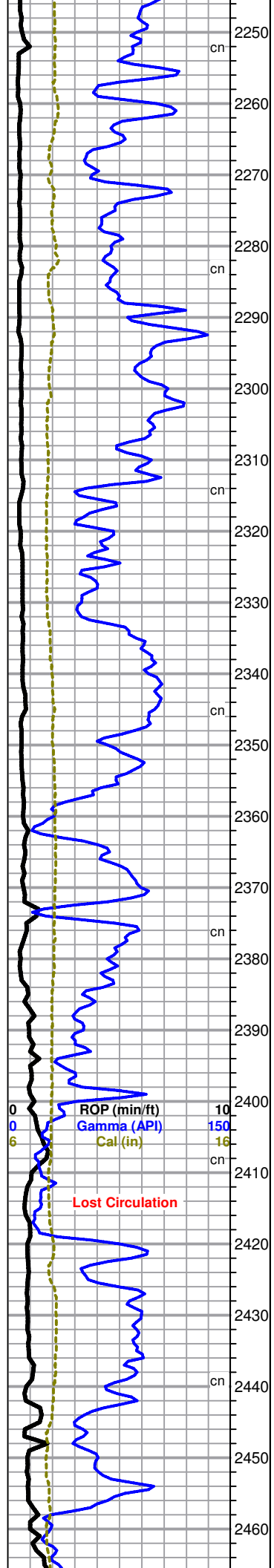
**PERRY 2006' (-644')**



Mud-Co Mud Ck  
 @ 2038'  
 1315 hrs 8.30.13  
 Vis: 36 Wt: 9.3  
 PV: 5 YP: 12  
 WL: 10.4  
 Cake: 1/32nd  
 pH: 11.5  
 CHL: 1,100 ppm  
 Cal: 60  
 Solids: 6.3  
 LCM: 0 #/bbl  
 DMC: \$3,816.65  
 CMC: \$4,140.45



Total Gas (units) 200  
 C1 (units) 200  
 C2 (units) 200  
 C3 (units) 200  
 C4 (units) 200



**KANSAS CITY 2400' (-1038')**

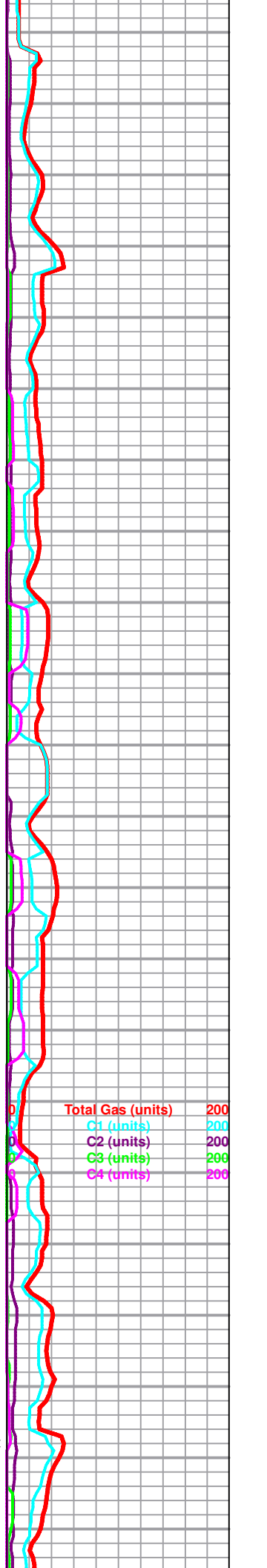
Start 20' Wet & Dry Samples @ 2400'

Limestone: It gray gray It cream, dense matrix, micro-vfxln, sub-fossiliferous to barren, poor visible porosity, no shows, no fluorescence.

Shale: gray dk gray, blocky to rounded, mostly soft, with abundant Limestone as above.

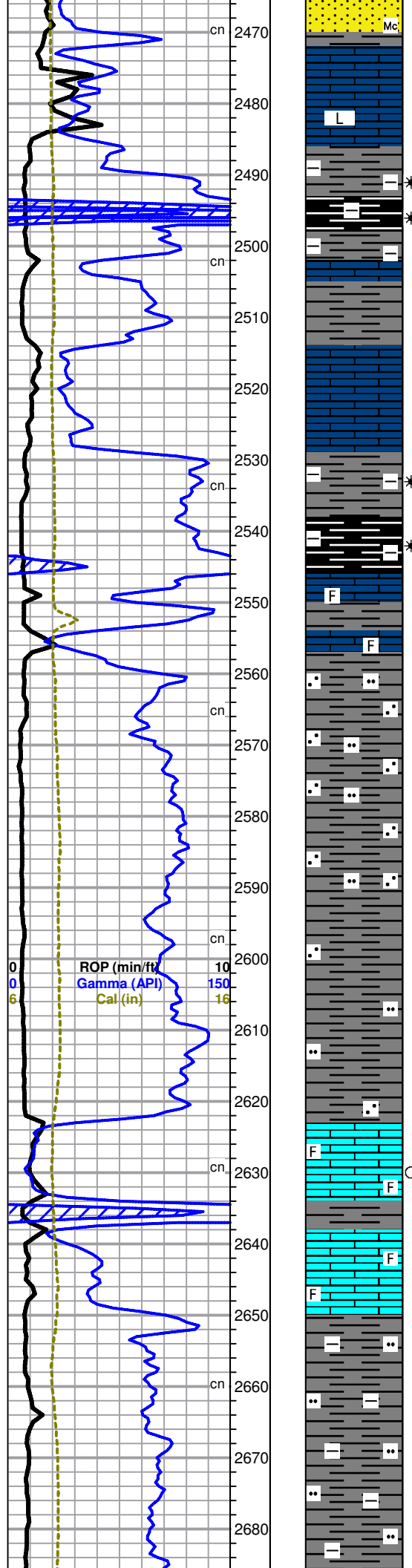
Sandstone: It gray sub-friable f-vfgrained clusters, sub-angular to sub-rounded, well sorted, some micaceous, good intergranular porosity, fair-poor show very It brown oil droplets and trace gas bubbles upon break/under lamp, spotty-even bright It yellow fluorescence, forced milky-white cut, faint odor.

Sandstone: It gray sub-friable f-vfgrained clusters, sub-angular to sub-rounded, well sorted, some micaceous, good intergranular porosity, shows drop out from above, no fluorescence, no odor.



Total Gas (units)	200
C1 (units)	200
C2 (units)	200
C3 (units)	200
C4 (units)	200

above, no fluorescence, no odor.



Limestone: tan dk cream brown, dense tight matrix, micro-cryptoxln with some lithographic non-descript, barren, no visible porosity, no shows, no fluorescence.

Shale: black dk gray, carbonaceous, blocky and firm, most waxy, argillaceous, fair show gas upon break.

Shale: gray dk gray, blocky to rounded, most soft to waxy.

Limestone: dk cream tan brown, dense tight matrix, micro-cryptoxln, barren, very poor visible porosity, no shows, no fluorescence.

Shale: black dk gray gray, most carbonaceous, blocky, firm to waxy and softer, some argillaceous, poor show gas upon break.

Limestone: cream gray, dense matrix, microxln, sub-fossiliferous to barren, poor visible porosity, no shows, no fluorescence, with Shale: gray, blocky.

**BASE KANSAS CITY 2557' (-1195')**

Shale: gray lt gray, blocky to rounded, soft, heavily arenaceous/silty.

Geologist Derek W. Patterson On Location 2245 hrs 8.30.13

Shale: gray lt gray, blocky to rounded, soft, some scattered arenaceous/silty material with drastic decrease from above.

**MARMATON GROUP 2623' (-1261')**

Limestone: lt gray lt tan, sub-friable matrix, vfxln, sub-fossiliferous, some scattered fair pinpoint/micro-vug porosity, few pieces with poor show lt brown oil droplets upon break, even lt yellow fluorescence in show rocks, forced bluish-white cut in show rocks, very faint odor.

Limestone: cream tan, dense matrix, micro-vfxln, most fossiliferous, fair inter-fossiliferous porosity, no shows, no fluorescence.

Shale: gray lt gray, blocky to rounded, most firm, heavily micaceous/silty, some argillaceous.

Shale: gray lt gray, blocky to rounded, most firm, heavily micaceous/silty, some

Shale Kick

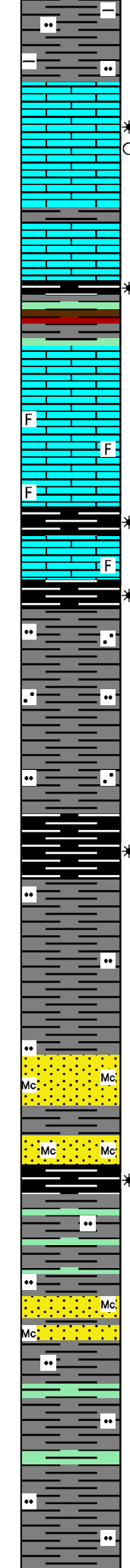
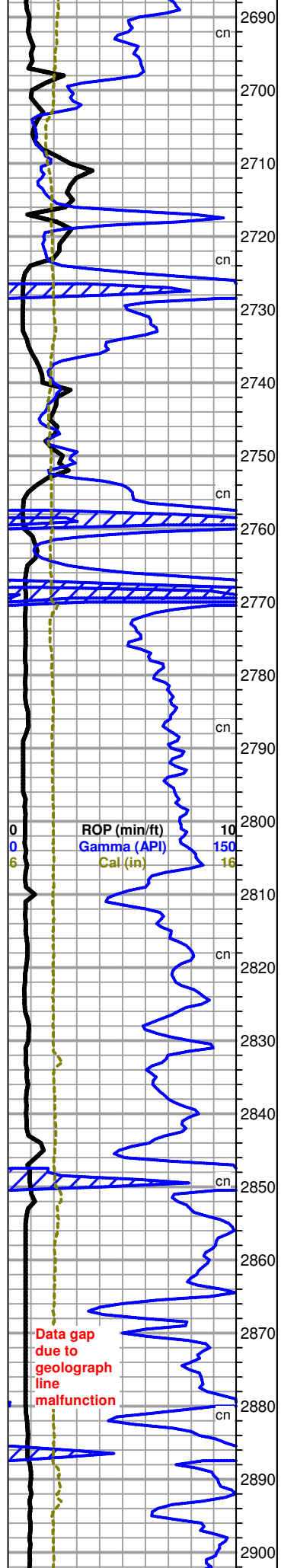
Shale Kick

Vis: 32  
Wt: 9.3  
LCM: 4 #/bbl

Total Gas (units) 200  
C1 (units) 200  
C2 (units) 200  
C3 (units) 200  
C4 (units) 200

90u Total

argillaceous.



**PAWNEE 2699' (-1337')**

Limestone: lt gray, softer friable matrix, vfxln, barren, fair interxln/pinpoint porosity, fair show lt brown oil droplets and gas upon break with increase under lamp, forced milky-white cut, moderate odor.

Limestone: cream tan, dense matrix, microxln, barren, no visible porosity, no shows, no fluorescence.

Shale: black, carbonaceous, blocky and firm, fair gas show, with Shale: gray dk gray dk red dk green, blocky to rounded, firm and hard to soft and waxy.

**FORT SCOTT 2734' (-1372')**

Limestone: cream lt cream, dense tight matrix, vf-microxln. most fossiliferous, poor visible porosity, no shows, even bright lt yellow/orange mineral fluorescence, no cut, no odor.

Shale: black, carbonaceous, blocky and firm, fair gas show upon break.

**CHEROKEE 2767' (-1405')**

Shale: black, carbonaceous, blocky and firm, fair gas show upon break.

Shale: gray lt gray, mostly rounded and softer, heavily arenaceous/silty.

Shale: black dk gray, carbonaceous, blocky, firm to softer and waxy, some silty in part, fair gas show upon break.

Shale: gray dk gray lt gray, mostly blocky, firm to softer and waxy, silty in part.

INFLUX Sandstone: lt gray white sub-friable fgrained clusters, sub-angular, fairly sorted, heavily micaceous, fair intergranular porosity, no shows, no fluorescence, no odor, with abundant Shale as above.

Shale: black dk gray, carbonaceous, blocky, firm to softer and waxy, some silty in part, fair gas show upon break.

Shale: gray lt gray some pale green, blocky to rounded, mostly soft, some silty in part.

**CATTLEMAN 2865' (-1503')**

Sandstone: lt gray white sub-friable fgrained clusters, sub-angular, fairly sorted, heavily micaceous, fair intergranular porosity, no shows, no fluorescence, no odor.

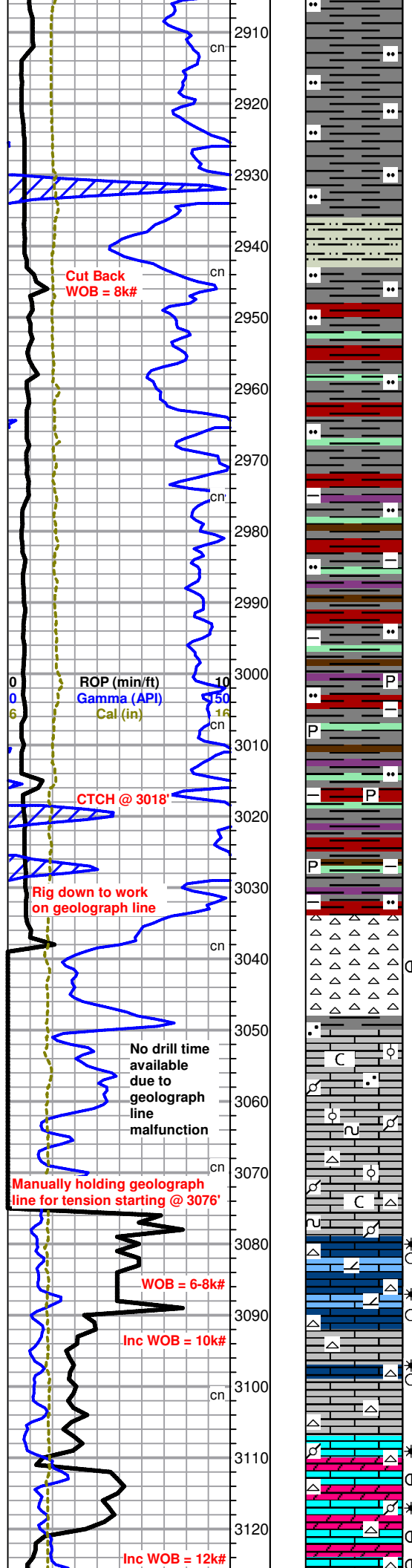
Shale: gray lt gray some pale green, blocky to rounded, mostly soft, some silty in part, most Sandstone drops out.

Shale: gray lt gray, blocky to rounded, mostly soft, some silty in part

132u Total

Total Gas (units)	200
C1 (units)	200
C2 (units)	200
C3 (units)	200
C4 (units)	200

Data gap due to geograph line malfunction



Shale: gray lt gray, blocky to rounded, waxy to soft, very silty.

Shale: dk red lt red pale green gray lt gray, blocky to rounded, mostly soft, most silty.

Shale: dk red lt red pale green lt purple pale green gray lt gray, blocky to rounded, mostly soft, very silty, argillaceous, abundant splintery material.

3020' cfs - Shale: dk red lt red pale green lt purple pale green gray lt gray, blocky to rounded, mostly soft, very silty, argillaceous, abundant splintery material, with Pyrite nodules.

Shale: dk red lt red pale green lt purple pale green gray lt gray, blocky to rounded, mostly soft, very silty, argillaceous, abundant splintery material, with Pyrite nodules.

**MISSISSIPPIAN CHERT 3034' (-1672')**

3077' - Chert: white lt cream, opaque, fresh and sharp to slightly weathered, scattered pieces with fair lt brown stain, no live shows, even-spotty lt yellow fluorescence, poor-no cut, no odor in sample.

**MISSISSIPPIAN LIME 3050' (-1688')**

3077' cfs 20" - Limestone: lt cream off white, sub-chalky matrix, vf-fxln, oolitic/pelletal, scattered sub-arenaceous material, fair visible porosity, no shows, no fluorescence, no cut, no odor in sample.

3077' cfs 40"/60" - Limestone: lt cream off white, sub-chalky matrix, f-coarsexln, most oolitic/pelletal, scattered glauconitic material, fair visible porosity, no shows, no fluorescence, no cut, with some scattered Chert: lt gray cream bone white, opaque, fresh and sharp, no shows, no fluorescence, no odor in sample.

Limestone: lt cream off white, dense cherty matrix, micro-cryptoxln, scattered small solution vugs, overall fair fracture porosity, scattered golden brown stain, few pieces poor show lt brown oil and gas bubbles upon break, even bright lt yellow fluorescence, poor bluish-white cut, with Limestone: lt gray lt cream, dense dolomitic matrix, micro-vfxln, barren, poor visible porosity, few pieces slight edge stain, no live shows, no fluorescence, noc cub, faint odor in sample.

Limestone: lt cream cream, dense matrix, vf-fxln, pelletal, fair-poor visible porosity, no shows, no fluorescence, no cut, with scattered cherty Limestone as above, few pieces still carrying poor show oil/gas upon break, even bright lt yellow fluorescence, fair cut, and Chert: gray cream, opaque, fresh and sharp, barren, no shows, no odor in sample.

Limestone: cream tan, brittle xln matrix, fxln, some pelletal to barren, scattered small solution vugs, fair interxln porosity in most, poor spotty golden stain, poor-fair show lt brown oil and gas bubbles upon break, spotty-even bright white fluorescence, white cut, with Dolomite: tan brown gray, friable sucrosic matrix, fair-good interxln porosity, no shows, no fluorescence, no cut, and scattered Chert: gray cream, fresh and sharp, barren, moderate-good odor in sample.

Data gap due to geograph line malfunction

Total Gas (units)	200
C1 (units)	200
C2 (units)	200
C3 (units)	200
C4 (units)	200

Mud-Co Mud Ck @ 3040'	
1445 hrs	8.31.13
Vis:	38
Wt:	9.3
PV:	10
YP:	14
WL:	8.8
Cake:	1/32nd
pH:	10.5
CHL:	1,000 ppm
Cal:	60
Solids:	7.1
LCM:	2 #/bbl
DMC:	\$4,725.30
CMC:	\$8,865.75

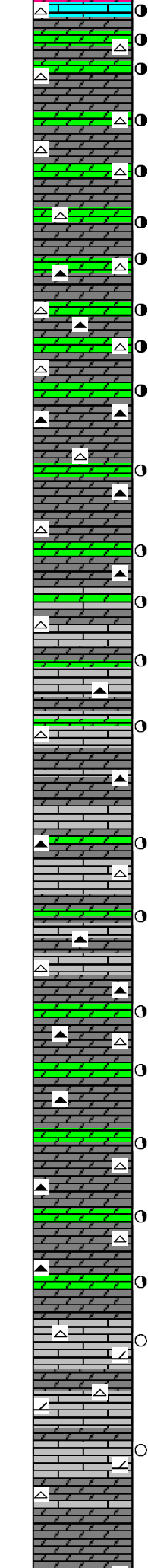
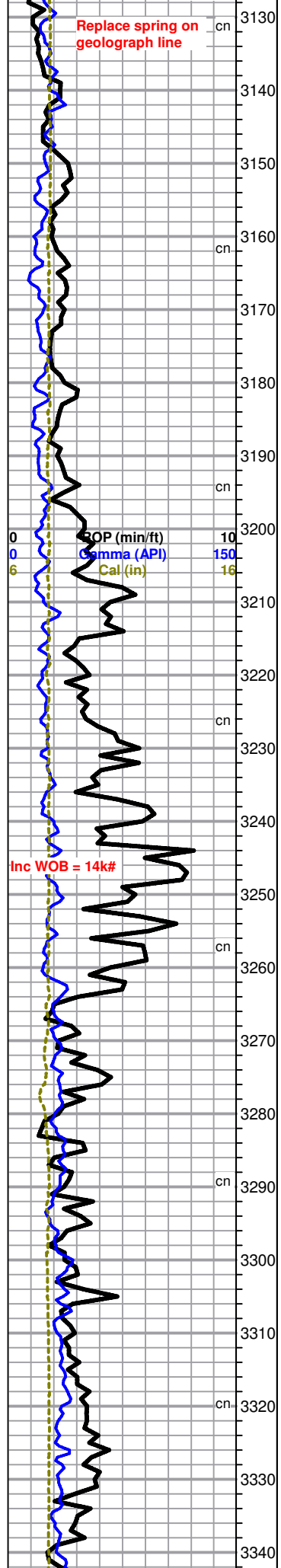
Data gap

Scale Change	
Total Gas (units)	100
C1 (units)	100
C2 (units)	100
C3 (units)	100
C4 (units)	100

Vis:	46
Wt:	9.3
LCM:	3 #/bbl

RPM = 70

Replace spring on geograph line



INFLUX Dolomite: gray tan brown, dense tight to friable matrix, vf-fxl, arenaceous/sucrosic, fair-good interxn porosity, no shows, no fluorescence, no cut, with Dolomite: It cream, dense cherty matrix, vfxln, altered fossiliferous, small solution vugs, fair visible porosity, good golden stain and show brown oil upon break, even bright white fluorescence, white cut, moderate odor in sample.

Dolomite: gray tan brown, dense tight to friable matrix, vf-fxl, arenaceous/sucrosic, fair-good interxn porosity, no shows, no fluorescence, no cut, with trace altered fossiliferous Dolomite as above, still carrying shows as above in those pieces, faint odor in sample.

Dolomite: gray tan brown, dense tight to friable matrix, vf-fxl, arenaceous/sucrosic, fair-good interxn porosity, no shows, no fluorescence, no cut, with Dolomite: It cream, dense cherty matrix, vfxln, altered fossiliferous, small solution vugs, fair visible porosity, good golden stain, fair show lt brown oil upon break, even bright white fluorescence, white cut, and some scattered Chert: cream tan gray, fresh and sharp, translucent, fossiliferous/spiculitic, no shows, no fluorescence, fair odor in sample.

Mixed Dolomite as above, still carrying fair-poor show in altered fossiliferous as above, increase in Chert from above, faint odor in sample and upon break.

Dolomite: tan brown, mostly dense matrix, vfxln, sucrosic texture, few pieces becoming slightly fossiliferous, fair-poor interxn porosity, no shows, no fluorescence, no cut, with trace Dolomite: It cream, dense cherty matrix, vfxln, altered fossiliferous, small solution vugs, fair visible porosity, good golden stain, fair show lt brown oil upon break, even bright white fluorescence, white cut, and continued Chert as above, no shows, faint odor in sample.

Dolomite (limey)/Limestone (dolomitic): tan brown, dense matrix, vfxln, sucrosic texture, some sub-fossiliferous, fair-poor interxn porosity, no shows, no fluorescence, no cut, with Dolomite: It cream tan, dense cherty matrix, vfxln, altered fossiliferous, some very cherty, small solution vugs, fair visible porosity, good golden stain, fair show lt brown oil upon break, even bright whitish-yellow fluorescence, white cut, and Chert: gray tan brown, translucent, fresh and sharp with some scattered weathered dolomitic pieces, fossiliferous/spiculitic, few pieces with slight stain in weathered parts, poor show lt brown oil upon break in stained areas, spotty white fluorescence, forced bluish-white cut, faint odor in sample.

Dolomite (limey)/Limestone (dolomitic): tan brown, dense matrix, vfxln, sucrosic texture, some sub-fossiliferous, fair-poor interxn porosity, no shows, no fluorescence, no cut, most altered fossiliferous Dolomite drops out, few pieces still in sample with slight stain and very poor show lt brown oil upon break, spotty whitish-yellow fluorescence, bluish-white cut, and Chert: gray tan brown, translucent, fresh and sharp with some scattered weathered dolomitic pieces, fossiliferous/spiculitic, no shows, no fluorescence, very faint odor in sample.

**Decrease In Sample Size/Quality**

Dolomite: tan brown gray, varying dense limey to friable matrix, vf-fxl, most good sucrosic development/texture, fair-good interxn porosity, no shows, no fluorescence, no cut, with some scattered Dolomite: It cream tan, dense cherty matrix, vfxln, altered fossiliferous, some very cherty, small solution vugs, fair-poor visible porosity, spotty golden stain, poor show lt brown oil upon break, even bright whitish-yellow fluorescence, white cut, and Chert: gray tan brown, translucent, fresh and sharp, fossiliferous/spiculitic, no shows, no fluorescence, very faint odor in sample.

Dolomite: tan brown gray, varying dense limey to friable matrix, vf-fxl, most good sucrosic development/texture, fair-good interxn porosity, no shows, no fluorescence, no cut, with trace Dolomite: It cream tan, dense cherty matrix, vfxln, altered fossiliferous, some very cherty, small solution vugs, fair-poor visible porosity, spotty golden stain, poor show lt brown oil upon break, even bright whitish-yellow fluorescence, white cut, and Chert: gray tan brown, translucent, fresh and sharp, fossiliferous/spiculitic, no shows, no fluorescence, very faint odor in sample.

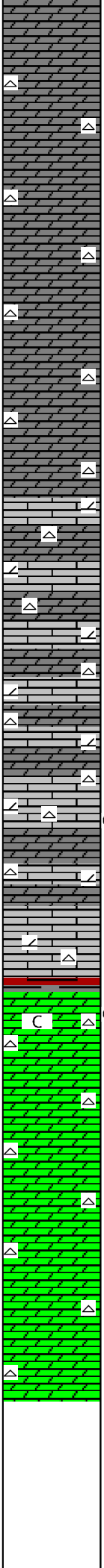
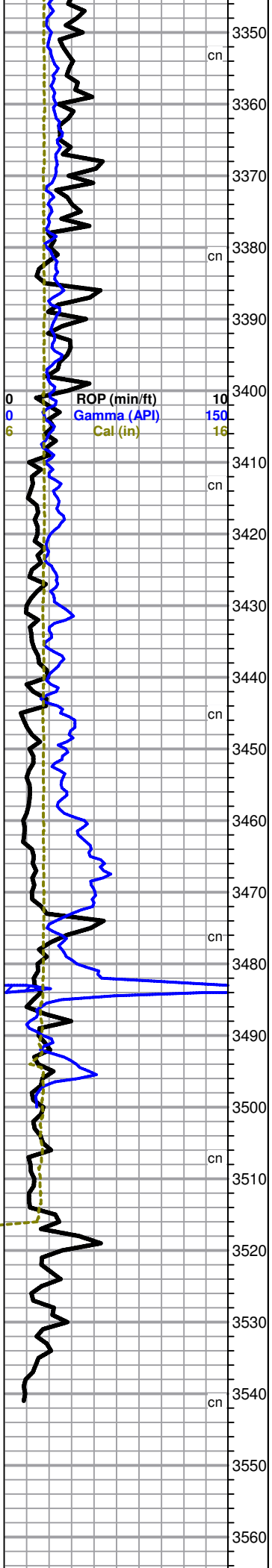
Limestone: gray brown, dense dolomitic matrix, vfxln, sucrosic texture, poor interxn porosity, no shows, no fluorescence, with Dolomite: gray brown, dense limey matrix, vfxln, arenaceous texture, poor interxn porosity, no shows, no fluorescence, with trace Chert: bone white lt gray, opaque to translucent, fresh and sharp, most barren, few pieces with poor edge stain, no live shows, poor edge fluorescence, no cut, no odor in sample.

Dolomite: gray lt gray dk gray, dense limey matrix, vfxln, poor xln development and associated porosity, no shows, no fluorescence, no cut, with trace Chert: bone white lt gray, opaque to translucent, fresh and sharp, most barren, no

Total Gas (units) 100  
C1 (units) 100  
C2 (units) 100  
C3 (units) 100  
C4 (units) 100

Vis: 54  
Wt: 9.2  
LCM: 4 #/bbl





shows, no fluorescence, no odor in sample.

Dolomite: gray lt gray dk gray, dense limey matrix, vfxln, poor xln development and associated porosity, no shows, no fluorescence, no cut, with trace Chert: bone white lt gray, opaque to translucent, fresh and sharp, most barren, no shows, no fluorescence, no cut, no odor in sample.

Dolomite: gray lt gray dk gray, dense limey matrix, vfxln, poor xln development and associated porosity, no shows, no fluorescence, no cut, with trace Chert: bone white lt gray, opaque to translucent, fresh and sharp, most barren, no shows, no fluorescence, no cut, no odor in sample.

Dolomite: gray lt gray dk gray, dense limey matrix, vfxln, poor xln development and associated porosity, no shows, no fluorescence, no cut, with trace Chert: bone white lt gray, opaque to translucent, fresh and sharp, most barren, no shows, no fluorescence, no cut, no odor in sample.

Dolomite: gray dk gray, dense limey matrix, vfxln, poor xln development and associated porosity, no shows, no fluorescence, no cut, with INFLUX  
Limestone: tan lt brown cream, dense dolomitic matrix, vfxln, poor visible porosity, no shows, no fluorescence, no cut, and few pieces of fresh Chert, no odor in sample.

Dolomite: gray dk gray, dense limey matrix, vfxln, poor xln development and associated porosity, no shows, no fluorescence, no cut, with Limestone: tan lt brown cream, dense dolomitic matrix, vfxln, poor visible porosity, no shows, no fluorescence, no cut, and few pieces of fresh Chert, no odor in sample.

Dolomite: gray dk gray, dense limey matrix, vfxln, poor xln development and associated porosity, no shows, no fluorescence, no cut, with Limestone: tan lt brown cream, dense dolomitic matrix, vfxln, poor visible porosity, no shows, no fluorescence, no cut, trace Chert: cream tan gray, translucent, fresh and sharp, fossiliferous/spiculitic, poor golden stain, very poor show lt brown oil upon break, poor spotty lt yellow fluorescence, very poor-no cut, no odor.

Limestone: tan lt brown cream, dense dolomitic matrix, vfxln, poor visible porosity, no shows, no fluorescence, no cut, trace Chert: white gray, opaque-translucent, fresh and sharp.

**ARBUCKLE 3484' (-2122')**

Dolomite: lt cream cream lt gray, dense to slightly friable matrix, f-coarsexln, most good rhombic development and associated interxln porosity, fair amount of chalk fill, couple of pieces with slight golden edge/porosity stain, very poor show lt brown oil droplets from stained pieces, even dull whitish-yellow fluorescence, poor-no cut, with Chert: white clear, translucent, fresh and sharp, most barren, no shows, very faint-no odor in sample.

Dolomite: tan cream, dense to slightly friable matrix, vf-coarsexln, poor-good rhombic development, fair-good interxln porosity, no shows, even dull whitish-yellow mineral fluorescence, with continued scattered Chert as above, no odor in sample.

Dolomite: cream tan some gray, dense tight matrix, micro-fxln, overall fair rhombic development, fair-poor visible porosity, no shows, even dull whitish-yellow mineral fluorescence, with scattered Chert: cream off white, weathered, no shows, no odor in sample.

Dolomite: cream tan gray, dense matrix, micro-vfxln, poor xln development and associated porosity, no shows, poor dull yellow mineral fluorescence, with few pieces of scattered Chert: white gray, opaque, fresh and sharp with some weathered, no shows, no odor in sample.

**RTD 3541' (-2179')**

**LTD 3541' (-2179')**

Orders Received to Run 5 1/2" Production Casing

Geologist Derek W. Patterson Off Location 0715 hrs 9.2.13

Respectfully Submitted,  
Derek W. Patterson

Mud-Co Mud Ck @ 3375'  
1415 hrs 9.1.13  
Vis: 51 Wt: 9.4  
PV: 15 YP: 19  
WL: 8.8  
Cake: 1/32nd  
pH: 10.5  
CHL: 1,200 ppm  
Cal: 60  
Solids: 7.5  
LCM: 4 1/2 #/bbl  
DMC: \$2,139.45  
CMC: \$11,005.20

Total Gas (units) 100  
C1 (units) 100  
C2 (units) 100  
C3 (units) 100  
C4 (units) 100

Vis: 50  
Wt: 9.4  
LCM: 3 #/bbl



**BASIC**<sup>SM</sup>  
ENERGY SERVICES  
PRESSURE PUMPING & WIRELINE

10244 NE Hwy. 61  
P.O. Box 8613  
Pratt, Kansas 67124  
Phone 620-672-1201

0040635016  
FIELD SERVICE TICKET

1718 08712 A

DATE \_\_\_\_\_ TICKET NO. \_\_\_\_\_

DATE OF JOB <b>08-28-13</b> DISTRICT <b>PRATT KS</b>		NEW WELL <input checked="" type="checkbox"/> OLD WELL <input type="checkbox"/> PROD <input type="checkbox"/> INJ <input type="checkbox"/> WDW <input type="checkbox"/> CUSTOMER ORDER NO.:						
CUSTOMER <b>LASSO - ENERGY</b>		LEASE <b>Bair</b> WELL NO. <b>1</b>						
ADDRESS		COUNTY <b>Cowley</b> STATE <b>KS</b>						
CITY STATE		SERVICE CREW <b>Sollitt, McNamee, Phye</b>						
AUTHORIZED BY		JOB TYPE: <b>CNW 8 5/8</b>						
EQUIPMENT#	HRS	EQUIPMENT#	HRS	EQUIPMENT#	HRS	TRUCK CALLED <b>8-28-13</b> DATE	AM PM	TIME
<b>77686-19905</b>	<b>1/2 hr</b>							<b>5:30</b>
<b>19960-21010</b>	<b>1/2 hr</b>							<b>6:30</b>
<b>37900</b>								<b>7:35</b>
								<b>8:00</b>
								<b>8:30</b>
								<b>120</b>

CONTRACT CONDITIONS: (This contract must be signed before the job is commenced or merchandise is delivered).

The undersigned is authorized to execute this contract as an agent of the customer. As such, the undersigned agrees and acknowledges that this contract for services, materials, products, and/or supplies includes all of and only those terms and conditions appearing on the front and back of this document. No additional or substitute terms and/or conditions shall become a part of this contract without the written consent of an officer of Basic Energy Services LP.

SIGNED: #2  
(WELL OWNER, OPERATOR, CONTRACTOR OR AGENT)

ITEM/PRICE REF. NO.	MATERIAL, EQUIPMENT AND SERVICES USED	UNIT	QUANTITY	UNIT PRICE	\$ AMOUNT
CP 103	60/40 for cut	SK	215		2,580.00
CC 102	cellfoke	lb	54		199.80
CC 109	Calcium chloride	lb	555		582.75
CF 153	Wooden Plug 8 5/8	SA	1		160.00
E 100	heavy oil	mi	120		510.00
E 101	Heavy Spirit oil	mi	240		1,680.00
E 113	Bulk Delivery	tm	7110		1,776.00
PE 200	Depth Charge 0-500'	SA	1		1,000.00
PE 240	Blender - mixer	SK	215		301.00
PE 504	Plug down Rusted	SA	1		250.00
SE003	Sealant	SA	1		175.00

CHEMICAL / ACID DATA:			

SUB TOTAL		<b>KG 5,528.73</b>
SERVICE & EQUIPMENT	%TAX ON \$	
MATERIALS	%TAX ON \$	
TOTAL		

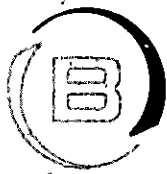
SERVICE REPRESENTATIVE	THE ABOVE MATERIAL AND SERVICE ORDERED BY CUSTOMER AND RECEIVED BY:  #2 (WELL OWNER OPERATOR CONTRACTOR OR AGENT)
FIELD SERVICE ORDER NO.	

Customer <b>LASSO ENERGY</b>	Lease No.	Date <b>08-28-13</b>
Lease <b>Bein</b>	Well # <b>1</b>	
Field Order # <b>8712</b>	Station <b>PRATT KS</b>	Casing <b>8 5/8</b>
		Depth <b>339</b>
Type Job <b>CNW 8 5/8</b>	Formation	Legal Description <b>23-32-6</b>
		County <b>Cowley</b>
		State <b>KS</b>

PIPE DATA		PERFORATING DATA		FLUID USED		TREATMENT RESUME		
Casing	Tubing Size	Shots/Ft		Acid	RATE	PRESS	ISIP	
<b>8 5/8</b>								
Depth <b>339</b>	Depth	From	To	Pre Pad	Max		5 Min.	
Volume <b>20 1/2</b>	Volume	From	To	Pad	Min		10 Min.	
Max Press <b>300</b>	Max Press	From	To	Frac	Avg		15 Min.	
Well Connection <b>P.C.</b>	Annulus Vol.	From	To		HHP Used		Annulus Pressure	
Plug Depth <b>324</b>	Packer Depth	From	To	Flush	Gas Volume		Total Load	

Customer Representative	Station Manager <b>DAVE SCOTT</b>	Treater <b>Robert J. D</b>
Service Units <b>37900</b>	<b>77686-19905</b>	<b>15960-21010</b>
Driver Names <b>Rob</b>	<b>McGowan</b>	<b>DAVE</b>

Time	Casing Pressure	Tubing Pressure	Bbbs. Pumped	Rate	Service Log
<b>6:35</b>					<b>on loc soft, med</b>
					<b>run 8.5x8 8 5/8 23#</b>
<b>7:00</b>					<b>CASING ON BOTTOM</b>
<b>7:08</b>					<b>Hook by circ</b>
<b>7:35</b>	<b>150</b>		<b>3</b>	<b>3</b>	<b>It spacer</b>
				<b>40</b>	<b>mix cont 220 sk 60/40 per cont</b>
			<b>48</b>		<b>3% occ 11y 1 5/8 G/Fake @ 14.5 SPPG</b>
					<b>cont mixed</b>
					<b>shut down</b>
					<b>Release Play</b>
				<b>35</b>	<b>It pump</b>
<b>8:00</b>	<b>250</b>		<b>20</b>		<b>Play done</b>
					<b>circ 15 @ 36 cont pit</b>
					<b>500 complete</b>
					<b>Thank you</b>



**BASIC**<sup>SM</sup>  
ENERGY SERVICES  
PRESSURE PUMPING & WIRELINE

10244 NE Hwy. 61  
P.O. Box 8613  
Pratt, Kansas 67124  
Phone 620-672-1201

FIELD SERVICE TICKET  
1718 08821 A

23-325-6E

DATE \_\_\_\_\_ TICKET NO \_\_\_\_\_

DATE OF JOB 9-2-13		DISTRICT Pratt, Kansas		NEW WELL <input checked="" type="checkbox"/> OLD WELL <input type="checkbox"/>		PROD <input type="checkbox"/> INJ <input type="checkbox"/> WDW <input type="checkbox"/>		CUSTOMER ORDER NO	
CUSTOMER Lasso Energy, LLC				LEASE Blair				WELL NO 1	
ADDRESS				COUNTY Cowley		STATE Kansas			
CITY STATE				SERVICE CREW C Messitt M McGraw T Semple					
AUTHORIZED BY				JOB TYPE C N W - Longstring A Jones					
EQUIPMENT#	HRS	EQUIPMENT#	HRS	EQUIPMENT#	HRS	TRUCK CALLED 9-2-13 DATE (AM/PM) TIME 9:00			
37,216	1.5	27,463	1.5			ARRIVED AT JOB (AM/PM) 3:30			
66,796-19,905	1.5					START OPERATION (AM/PM) 8:30			
						FINISH OPERATION (AM/PM) 10:00			
19,826-19,860	1.5					RELEASED 9-2-13 (AM/PM) 10:15			
						MILES FROM STATION TO WELL 120			

CONTRACT CONDITIONS (This contract must be signed before the job is commenced or merchandise is delivered)

The undersigned is authorized to execute this contract as an agent of the customer. As such, the undersigned agrees and acknowledges that this contract for services, materials, products, and/or supplies includes all of and only those terms and conditions appearing on the front and back of this document. No additional or substitute terms and/or conditions shall become a part of this contract without the written consent of an officer of Basic Energy Services LP.

SIGNED [Signature]  
(WELL OWNER, OPERATOR, CONTRACTOR OR AGENT)

ITEM/PRICE REF NO	MATERIAL, EQUIPMENT AND SERVICES USED	UNIT	QUANTITY	UNIT PRICE	\$ AMOUNT
P CP105	AA 2 Blend Cement	sh	225	\$	3,825.00
P CP105	AA 2 Blend Cement	sh	30	\$	510.00
P CC102	Cellflatre	Lb	64	\$	236.80
P CC105	Defoamer	Lb	49	\$	196.00
P CC111	Salt	Lb	1,284	\$	642.00
P CC112	Cement Friction Reducer	Lb	73	\$	438.00
P CC129	Fluid Loss	Lb	121	\$	907.50
P CC201	Gilsonite	Lb	1,275	\$	854.25
P CF103	Top Rubber Plug, 5 1/2"	ea	1	\$	105.00
P CF251	Regular Guide Shoe, 5 1/2"	ea	1	\$	250.00
P CF1451	Insert Float Valve, 5 1/2"	ea	1	\$	215.00
P CF1601	Turbolizer, 5 1/2"	ea	10	\$	1,250.00
P CC154	Super Flush	Gal	500	\$	1,225.00

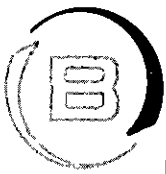
CHEMICAL / ACID DATA			

SUB TOTAL		66
SERVICE & EQUIPMENT	%TAX ON \$	
MATERIALS	%TAX ON \$	
TOTAL		

SERVICE REPRESENTATIVE [Signature]

THE ABOVE MATERIAL AND SERVICE ORDERED BY CUSTOMER AND RECEIVED BY [Signature]  
(WELL OWNER OPERATOR CONTRACTOR OR AGENT)

FIELD SERVICE ORDER NO



**BASIC**  
ENERGY SERVICES  
PRESSURE PUMPING & WIRELINE

10244 NE Hwy. 61  
P.O. Box 8613  
Pratt, Kansas 67124  
Phone 620-672-1201

FIELD SERVICE TICKET

1718 ~~00022~~ A  
Continuation

23-325-6E

DATE \_\_\_\_\_ TICKET NO 8821

DATE OF JOB 9-2-13 DISTRICT Pratt, Kansas		NEW WELL <input checked="" type="checkbox"/> OLD WELL <input type="checkbox"/> PROD <input type="checkbox"/> INJ <input type="checkbox"/> WDW <input type="checkbox"/> CUSTOMER ORDER NO							
CUSTOMER Lasso Energy, LLC.		LEASE Blair WELL NO 1							
ADDRESS		COUNTY Cowley STATE Kansas							
CITY STATE		SERVICE CREW Messick M. McGraw A. Jones							
AUTHORIZED BY		JOB TYPE C.N.W. Longstring T Sample							
EQUIPMENT#	HRS	EQUIPMENT#	HRS	EQUIPMENT#	HRS	TRUCK CALLED	DATE	AM	TIME
						ARRIVED AT JOB		AM	PM
						START OPERATION		AM	PM
						FINISH OPERATION		AM	PM
						RELEASED		AM	PM
						MILES FROM STATION TO WELL			

CONTRACT CONDITIONS (This contract must be signed before the job is commenced or merchandise is delivered)

The undersigned is authorized to execute this contract as an agent of the customer. As such, the undersigned agrees and acknowledges that this contract for services, materials, products, and/or supplies includes all of and only those terms and conditions appearing on the front and back of this document. No additional or substitute terms and/or conditions shall become a part of this contract without the written consent of an officer of Basic Energy Services LP

SIGNED X [Signature]  
(WELL OWNER, OPERATOR, CONTRACTOR OR AGENT)

ITEM/PRICE REF NO	MATERIAL, EQUIPMENT AND SERVICES USED	UNIT	QUANTITY	UNIT PRICE	\$ AMOUNT
P E 100	Pickup Mileage	Mi	120	\$	510.00
P E 101	Heavy Equipment Mileage	Mi	240	\$	1,680.00
P E 113	Bulk Delivery	tm	1446	\$	2,313.60
P CE 204	Cement Pump: 3,000 Feet To 4,000 Feet	hrs	4	\$	2,160.00
P CE 240	Blending and Mixing Service	sf	255	\$	357.00
P CE 504	Plug Container	Job	1	\$	250.00
P CE 501	Casing Swivel	Job	1	\$	200.00
P S003	Service Supervisor	hrs	8	\$	175.00

CHEMICAL / ACID DATA			

SUB TOTAL		16. \$ 10,980.09
SERVICE & EQUIPMENT	%TAX ON \$	
MATERIALS	%TAX ON \$	
TOTAL		

SERVICE REPRESENTATIVE [Signature] THE ABOVE MATERIAL AND SERVICE ORDERED BY CUSTOMER AND RECEIVED BY [Signature]  
(WELL OWNER OPERATOR CONTRACTOR OR AGENT)

FIELD SERVICE ORDER NO

Customer asso Energy, LLC	Lease No	Date 9-2-13
Lease Blair	Well # 1	
Field Order # 8821	Station Pratt Kansas	Casing" 5 1/2
		Depth 155 Lb 3540
Type Job C.N.W. - Longstring	Formation	County Cowley
		State Kansas
		Legal Description 23-323-6E

PIPE DATA		PERFORATING DATA		FLUID USED		TREATMENT RESUME	
Casing Size 5 1/2 15.5 Lb/ft	Tubing Size 5 Lb/ft	Shots/Ft 225	sacks	AA2 cement	With .58F	Fluid Loss	
Depth 3540 feet	Depth	From .38	Friction	Reducer, 28	Max Defoamer, 10%	5 Min	
Volume 843 Bbl	Volume	From .25	10 bbl 1st	Cellflats, 5 Lb	1st Gilsonite	10 Min	
Max Press 2000 PSI	Max Press	From	To 15 Lb	Gal, 6.01 Gal	Avg SA, 1.43	CU.FT/5A	15 Min
Wall Connection Flucon	Annulus Vol Garner	From 30	sacks of	above Blend to	HHP Used plug Rat Hole	Annulus Pressure	
Plug Depth 3510 feet	Packer Depth	From	To	Flush 838 Bbl. Fresh Water	Gas Volume	Total Load	

Customer Representative Bruce Telso	Station Manager Kevin Gardley	Treater Clarence R. Messick
Service Units 37,216	66,786	19,905
Driver Names Messick	McGraw	Jones
		Seiple

Time PM	Casing Pressure	Tubing Pressure	Bbls Pumped	Rate	Service Log
3:30					Truckson location and hold safety meeting
4:45					Fossil Drilling start to run Regular Guide Shoe Shoe Joint with Auto Fill
					Insert screwed into collar and a total of 84 Joints new 15.5 Lb/ft
					5 1/2 casing A Turbulator was installed on collars #1, 2, 4, 6, 9, 11, 13, 20, 26 and #32
6:40					Casing in well Circulate and Rotate for 2 hrs
8:30		2000			Shut in well Pressure Test Open Well
8:33	250			6	Start Fresh Water Pre-Flush
	250		20	6	Start Super Flush
	275		32	5	Start Fresh Water Spacer
8:42	300		35	5	Start mixing 225 sacks AA2 cement
	-0-		92		Stop pumping Shut in well Wash pump and lines Release Top Rubber Plug Open Well
9:03	150			6.5	Start Fresh Water Displacement
			47	5	Start to lift cement
9:20	1,200		838		Plug down
	2000				Pressure up
					Release pressure Insert hold
	-0-		7	3	Plug Rat Hole
					Wash up pump truck
10:15					Job Complete
					Thank You
					Clarence, Mike, Tim, Andrew

## TREATMENT REPORT

Customer <b>LAZZO ENERGY</b>	Lease No.	Date <b>9-24-13</b>
Lease <b>BAIR</b>	Well #	
Field Order # <b>9043</b>	Station <b>PRATT KS</b>	Casing <b>5 1/2</b>
Type Job <b>ACNW</b>	Depth	County <b>COWHEY</b>
	Formation <b>MISSISSIPPI</b>	State <b>KS</b>
		Legal Description <b>23-325-6E</b>

PIPE DATA		PERFORATING DATA		FLUID USED		TREATMENT RESUME		
Casing Size <b>5 1/2</b>	Tubing Size <b>2 7/8</b>	Shots/Ft		Acid <b>12009K 10% MCA</b>	RATE	PRESS	ISIP	
Depth	Depth	From <b>3040</b>	To <b>3046</b>	Pre Pad	Max			5 Min.
Volume	Volume <b>179</b>	From <b>3063</b>	To <b>3077</b>	Pad	Min			10 Min.
Max Press	Max Press	From	To	Frac	Avg			15 Min.
Well Connection	Annulus Vol. <b>48</b>	From	To		HHP Used			Annulus Pressure
Plug Depth	Packer Depth	From	To	Flush	Gas Volume			Total Load

Customer Representative	Station Manager <b>GORDLEY</b>	Treater <b>M'WIRE</b>
Service Units <b>30316</b>	<b>33703</b>	
Driver Names <b>M'WIRE</b>	<b>PISKE</b>	

Time	Casing Pressure	Tubing Pressure	Bbls. Pumped	Rate	Service Log
940					ON LOCATION / SAFETY MET RIG UP
1055				1 <sup>2</sup>	START ACID TO PICKUP @ 3087
1100			48		ACID IN ON FLUSH
1108			19	3 <sup>5</sup>	ACID ON BOTTOM UP RATE
1120		102			PRESSURE
1122		270	64		CIRCULATION TO PIT
1122			66		ACID TO PIT
1124			69		ACID CHARGED
1141		2500			PRESSURE TEST
					LEAKED BACK
1152		2500			RUN 2 INKS RETEST
1154		1500			LEAKED BACK
1216					TEST TOOKS
1218		419		1 <sup>2</sup>	SPOT ACID
1233			185	1	ACID SPOTTED SHUT DOWN
1235		7200			HUNT HOLES 3 BLANK
1237		886		1 <sup>2</sup>	3077-3076 TREAT
1239		987		1 <sup>2</sup>	3076-3075 "
1240		898		1 <sup>2</sup>	3075-3074 "
1242		2100		-	3074-3073 BLANK
1244		1887		1 <sup>2</sup>	3073-3072 TREAT

## TREATMENT REPORT

Customer	HASSO ENERGY		Lease No.			Date	9-24-13	
Lease	BAIR		Well #	1		County	COWLEY	
Field Order #	9043	Station	PRATT	KS	Casing	5/2	Depth	
Type Job	ACNW		Formation	MISSISSIPPI		Legal Description	23-325-6E	

PIPE DATA		PERFORATING DATA		FLUID USED		TREATMENT RESUME		
Casing Size	2 7/8	Shots/Ft		Acid	1200 gal 10% MCA	RATE	PRESS	ISIP
Depth	23040	From	To	Pre Pad	MCA	Max		5 Min.
Volume	179	From	To	Pad		Min		10 Min.
Max Press		From	To	Frac		Avg		15 Min.
Well Connection	Annulus Vol.	From	To	Flush	2% KCL	HHP Used		Annulus Pressure
Plug Depth	Packer Depth	From	To			Gas Volume		Total Load

Customer Representative	MATT		Station Manager	COWLEY		Treater	M. WIRE	
Service Units	303/6		33703					
Driver Names	M. WIRE		PIERCE					

Time	Casing Pressure	Tubing Pressure	Bbls. Pumped	Rate	Service Log		
1246		2200		—	3072	3071	BLANK
1247		2200		—	3071	3070	
1248		2100		—	3070	3069	
1249		861		12	3069	3068	TREAT
1251		880		12	3068	3067	
1252		843		12	3067	3066	
1254		840		12	3066	3065	
1255		2100		—	3065	3064	BLANK
1256		831		12	3064	3063	TREAT
1257		877		12	3063	3062	
1258		2100			3062		BLANK
					PULL 1 INT		
1311		2100		—	2	BLANK	
1313		1043		12	3046	3045	TREAT
1314		808		12	3045	3044	
1316		881		12	3044	3043	
1318		1139		12	3043	3042	
1319		909		12	3042	3041	
1321		908		12	3041	3040	
1323		2200			3040		BLANK

TAB COMPLETE  
THANK YOU





**BASIC**  
ENERGY SERVICES  
PRESSURE PUMPING & WIRELINE

10244 NE Hwy. 61  
P.O. Box 8613  
Pratt, Kansas 67124  
Phone 620-672-1201

FIELD SERVICE TICKET  
1718 09043 A

23-325-6E DATE TICKET NO.

DATE OF JOB	9-24-13	DISTRICT	KANSAS		NEW WELL	<input checked="" type="checkbox"/>	OLD WELL	<input type="checkbox"/>	PROD	<input type="checkbox"/>	INJ	<input type="checkbox"/>	WDW	<input type="checkbox"/>	CUSTOMER ORDER NO.:	
CUSTOMER	LASSO ENERGY				LEASE	BAIR				WELL NO.	1					
ADDRESS					COUNTY	COWLEY				STATE	KS					
CITY					STATE					SERVICE CREW	M'GUIRE PIERCE					
AUTHORIZED BY					JOB TYPE:	ACNW										
EQUIPMENT#	HRS	EQUIPMENT#	HRS	EQUIPMENT#	HRS	TRUCK CALLED	9-24-13	DATE	9-24-13	AM	600	TIME				
33703	2 1/2					ARRIVED AT JOB				AM	940	PM				
						START OPERATION				AM	1055	PM				
30316	2 1/2					FINISH OPERATION				AM	1323	PM				
						RELEASED				AM		PM				
						MILES FROM STATION TO WELL					140					

CONTRACT CONDITIONS: (This contract must be signed before the job is commenced or merchandise is delivered).

The undersigned is authorized to execute this contract as an agent of the customer. As such, the undersigned agrees and acknowledges that this contract for services, materials, products, and/or supplies includes all of and only those terms and conditions appearing on the front and back of this document. No additional or substitute terms and/or conditions shall become a part of this contract without the written consent of an officer of Basic Energy Services LP.

SIGNED: \_\_\_\_\_  
(WELL OWNER, OPERATOR, CONTRACTOR OR AGENT)

ITEM/PRICE REF. NO.	MATERIAL, EQUIPMENT AND SERVICES USED	UNIT	QUANTITY	UNIT PRICE	\$ AMOUNT
AK324	10% HCL ACID	gal	1200		2040 -
ASK340	MCA ACID CONVERSION	gal	1200		780 -
C204	CIA-1 EP	gal	3		225 -
C704	CLAYMAX HCL	gal	9		315 -
E300	ACID PUMP SERVICE	EA	1		900 -
E100	VAN MIREAOL	MI	140		595 -
E101	HEAVY EQUIPMENT MIREAOL	MI	140		980 -
S003	SERVICE SUPERVISION	EA	1		175 -

SUB TOTAL  
KG 4507.50

CHEMICAL / ACID DATA:			

SERVICE & EQUIPMENT	%TAX ON \$	
MATERIALS	%TAX ON \$	
TOTAL		

SERVICE REPRESENTATIVE  
*[Signature]*

THE ABOVE MATERIAL AND SERVICE ORDERED BY CUSTOMER AND RECEIVED BY: *[Signature]*  
(WELL OWNER OPERATOR CONTRACTOR OR AGENT)

FIELD SERVICE ORDER NO.

Customer <b>LAZZO ENERGY</b>	Lease No.	Date <b>09-25-13</b>
Lease <b>BAIR</b>	Well # <b>1</b>	
Field Order # <b>2117</b>	Station <b>PRATT KS</b>	Casing <b>3 1/2</b>
Type Job <b>ACNW Re-fract</b>	Depth	County <b>Cowley</b>
	Formation	State <b>KS</b>
		Legal Description <b>23-32-6</b>

PIPE DATA		PERFORATING DATA		FLUID USED		TREATMENT RESUME		
Casing Size	Tubing Size <b>2 7/8</b>	Shots/Ft <b>3040-46</b>		Acid		RATE	PRESS	ISIP <b>700</b>
Depth	Depth	From <b>3063</b>	To <b>77</b>	Pre Pad		Max		5 Min. <b>400</b>
Volume	Volume <b>18</b>	From	To	Pad		Min		10 Min.
Max Press	Max Press <b>2,500</b>	From	To	Frac		Avg		15 Min. <b>300</b>
Well Connection	Annulus Vol.	From	To			HHP Used		Annulus Pressure
Plug Depth	Packer Depth <b>7030</b>	From	To	Flush		Gas Volume		Total Load <b>95</b>

Customer Representative	Station Manager <b>DAVE SCOTT</b>	Treater <b>Robert Sullivan</b>
Service Units <b>37900</b>	<b>77463</b>	<b>19858</b>
Driver Names <b>Sullivan</b>	<b>Anthony</b>	

Time	Casing Pressure	Tubing Pressure	Bbls. Pumped	Rate	Service Log
<b>8:30</b>					<b>on loc soft, messy</b>
<b>9:20</b>		<b>300</b>	<b>16</b>	<b>5</b>	<b>load tube</b>
		<b>1350</b>		<b>6</b>	<b>loaded increase rate</b>
		<b>600</b>	<b>69</b>	<b>2 1/2</b>	<b>slow rate</b>
		<b>1450</b>	<b>71</b>	<b>6.9</b>	<b>START Flush increase rate</b>
<b>9:38</b>		<b>700</b>	<b>95</b>		<b>shut down</b>
		<b>400</b>			<b>5 min</b>
		<b>300</b>			<b>15 min</b>
					<b>CLOSE IN</b>
<b>10:00</b>					<b>SOB complete</b>
					<b>Thank you</b>



**BASIC**  
ENERGY SERVICES  
PRESSURE PUMPING & WIRELINE

10244 NE Hwy. 61  
P.O. Box 8613  
Pratt, Kansas 67124  
Phone 620-672-1201

1718 09117 A  
FIELD SERVICE TICKET

DATE \_\_\_\_\_ TICKET NO. \_\_\_\_\_

DATE OF JOB: 09-25-13		DISTRICT: PR01H		NEW WELL <input checked="" type="checkbox"/> OLD WELL <input type="checkbox"/>		PROD <input type="checkbox"/> INJ <input type="checkbox"/> WDW <input type="checkbox"/>		CUSTOMER ORDER NO.:	
CUSTOMER: LASSO-ENERGY				LEASE: PAIR		WELL NO.:			
ADDRESS:				COUNTY: Cowley		STATE: KS			
CITY:				STATE:		SERVICE CREW: Sullivan, Andrew			
AUTHORIZED BY:				JOB TYPE: APBW Re Test					
EQUIPMENT#	HRS	EQUIPMENT#	HRS	EQUIPMENT#	HRS	TRUCK CALLED	DATE	AM	TIME
27463-19858	20 hrs						9-24-13	PM	4:00
37900						ARRIVED AT JOB	9-25-13	AM	8:30
						START OPERATION		AM	9:20
						FINISH OPERATION		PM	9:40
						RELEASED		AM	10:15
						MILES FROM STATION TO WELL			140

CONTRACT CONDITIONS: (This contract must be signed before the job is commenced or merchandise is delivered).

The undersigned is authorized to execute this contract as an agent of the customer. As such, the undersigned agrees and acknowledges that this contract for services, materials, products, and/or supplies includes all of and only those terms and conditions appearing on the front and back of this document. No additional or substitute terms and/or conditions shall become a part of this contract without the written consent of an officer of Basic Energy Services LP.

SIGNED: Matt Boster  
(WELL OWNER, OPERATOR, CONTRACTOR OR AGENT)

ITEM/PRICE REF. NO.	MATERIAL, EQUIPMENT AND SERVICES USED	UNIT	QUANTITY	UNIT PRICE	\$ AMOUNT
AK 324	10% HCL	gal	3,000		5,100.00
ASK 341	NE Air-D Converter	gal	3,000		360.00
ASK 342	FE Air Converter	gal	3,000		750.00
C 204	Inhibitor	gal	6		450.00
C 204	Chemical	mi	4		140.00
E 300	Fluid Pump	SA	1		900.00
E 100	pack m	mi	140		595.00
E 101	Heavy Spill	mi	140		980.00
3003	Scrubber Solution	SA	1		175.00

SUB TOTAL 16,142.00

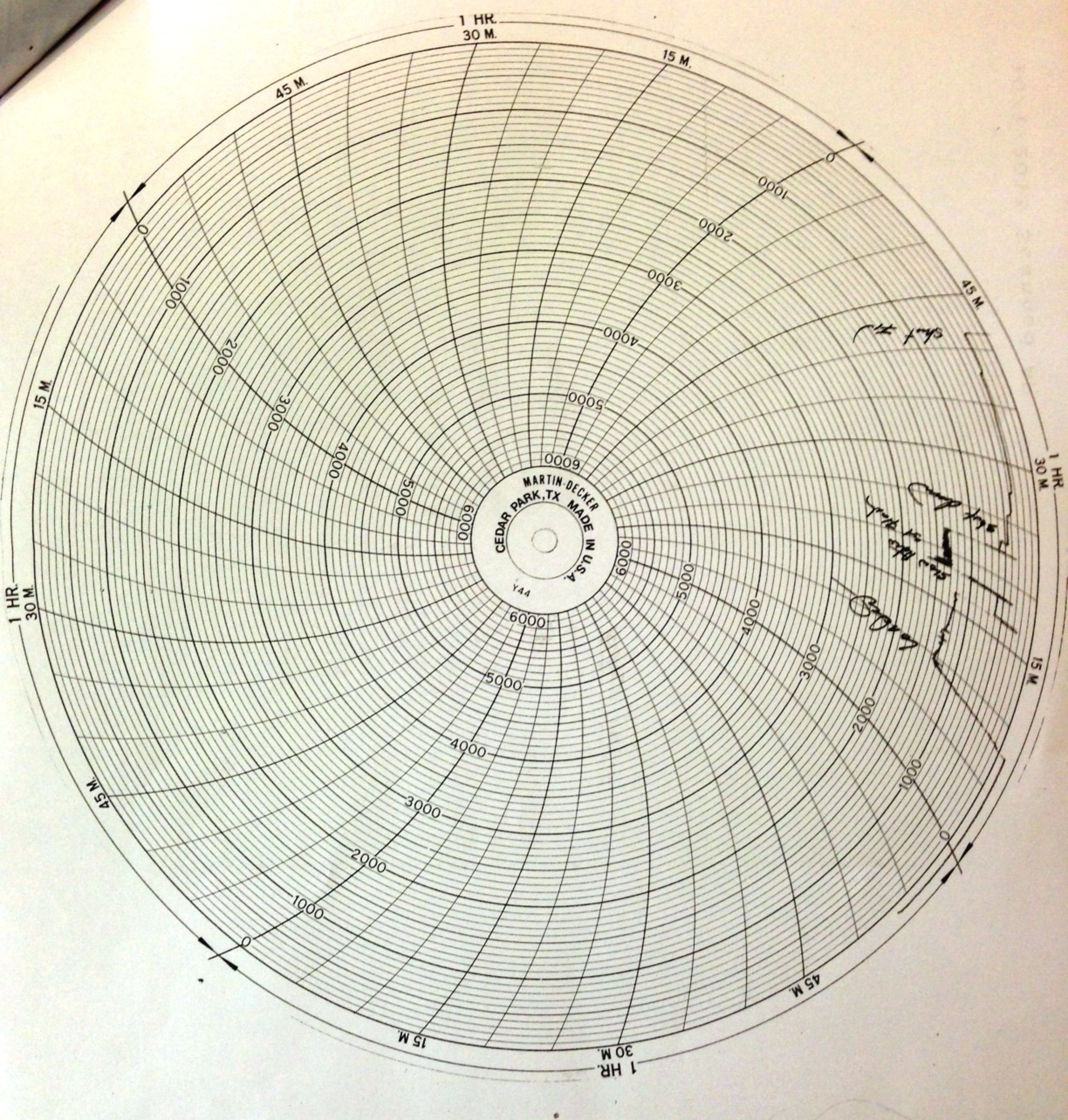
CHEMICAL / ACID DATA:			

SERVICE & EQUIPMENT	%TAX ON \$	
MATERIALS	%TAX ON \$	
TOTAL		<u>16,142.00</u>

SERVICE REPRESENTATIVE: Robert J. [Signature]

THE ABOVE MATERIAL AND SERVICE ORDERED BY CUSTOMER AND RECEIVED BY: Matt Boster  
(WELL OWNER OPERATOR CONTRACTOR OR AGENT)

FIELD SERVICE ORDER NO. \_\_\_\_\_





10244 NE Hwy. 61  
P.O. Box 8613  
Pratt, Kansas 67124  
Phone 620-672-1201

FIELD SERVICE TICKET

1718 06834 A

23-325-611 DATE \_\_\_\_\_ TICKET NO. \_\_\_\_\_

DATE OF JOB <u>10-4-13</u> DISTRICT _____		NEW WELL <input checked="" type="checkbox"/>	OLD WELL <input type="checkbox"/>	PROD <input type="checkbox"/>	INJ <input type="checkbox"/>	WDW <input type="checkbox"/>	CUSTOMER ORDER NO.:			
CUSTOMER <u>Lasso Energy</u>		LEASE <u>Brill #1</u>				WELL NO. _____				
ADDRESS _____		COUNTY <u>Cowley Co.</u>		STATE <u>KS</u>						
CITY _____ STATE _____		SERVICE CREW <u>Pratt, KS</u>								
AUTHORIZED BY _____		JOB TYPE: <u>20 Tank Slick Prod Frac Prod</u>								
EQUIPMENT#	HRS	EQUIPMENT#	HRS	EQUIPMENT#	HRS	TRUCK CALLED	DATE	AM	PM	TIME
						ARRIVED AT JOB	<u>10-4-13</u>			<u>10:15</u>
						START OPERATION	<u>10-4-13</u>			
						FINISH OPERATION	<u>10-4-13</u>			
						RELEASED	<u>10-4-13</u>			
						MILES FROM STATION TO WELL				<u>280</u>

CONTRACT CONDITIONS: (This contract must be signed before the job is commenced or merchandise is delivered).  
The undersigned is authorized to execute this contract as an agent of the customer. As such, the undersigned agrees and acknowledges that this contract for services, materials, products, and/or supplies includes all of and only those terms and conditions appearing on the front and back of this document. No additional or substitute terms and/or conditions shall become a part of this contract without the written consent of an officer of Basic Energy Services LP.

SIGNED: [Signature]  
(WELL OWNER, OPERATOR, CONTRACTOR OR AGENT)

ITEM/PRICE REF. NO.	MATERIAL, EQUIPMENT AND SERVICES USED	UNIT	QUANTITY	UNIT PRICE	\$ AMOUNT
E713	Liquid Chemical Additive	JOB	1		
E739	Densimeter	CG	1		
E727	Suction Manifold Rental	CG	20		
E707	4" req. Valve Rental	JOB	1		
E714	Prohibit Trailer	JOB	1		
S003	Service Supervisor	CG	1		

CHEMICAL / ACID DATA:			

SERVICE & EQUIPMENT	% TAX ON \$	
MATERIALS	% TAX ON \$	
TOTAL		<u>91,561.60</u>

SERVICE REPRESENTATIVE <u>Bruber, Anthony</u>	THE ABOVE MATERIAL AND SERVICE ORDERED BY CUSTOMER AND RECEIVED BY: <u>[Signature]</u>
FIELD SERVICE ORDER NO. <u>J. Westerman</u>	(WELL OWNER OPERATOR CONTRACTOR OR AGENT)



**BASIC**<sup>SM</sup>  
ENERGY SERVICES  
PRESSURE PUMPING & WIRELINE

10244 NE Hwy. 61  
P.O. Box 8613  
Pratt, Kansas 67124  
Phone 620-672-1201

FIELD SERVICE TICKET

1718 06833 A

23-325-610

DATE \_\_\_\_\_ TICKET NO. \_\_\_\_\_

DATE OF JOB 10-4-13 DISTRICT _____		NEW WELL <input checked="" type="checkbox"/> OLD WELL <input type="checkbox"/> PROD <input type="checkbox"/> INJ <input type="checkbox"/> WDW <input type="checkbox"/> CUSTOMER ORDER NO.:							
CUSTOMER Lasso Energy		LEASE Bair #1 WELL NO. _____							
ADDRESS _____		COUNTY Cowley CO. STATE KS							
CITY _____ STATE _____		SERVICE CREW Pratt, KS							
AUTHORIZED BY _____		JOB TYPE: 20 Tank Slick H2O frac NW							
EQUIPMENT#	HRS	EQUIPMENT#	HRS	EQUIPMENT#	HRS	TRUCK CALLED	DATE	AM	TIME
21643	2.25	21959	2.25	25907/19348	2.25	ARRIVED AT JOB	10-4-13	AM	10:15
73868	2.25	19332/21038	2.25	28123/33671	2.25	START OPERATION	10-4-13	AM	11:52
71133	2.25	19901/13422	2.25	19872	2.25	FINISH OPERATION	10-4-13	AM	2:15
33750	2.25	38114/31935	2.25	7303	2.25	RELEASED	10-4-13	AM	3:15
19851	2.25	17900/37715	2.25	17816	2.25	MILES FROM STATION TO WELL	280		
31242/3374	2.25	17886/19347	2.25						

CONTRACT CONDITIONS: (This contract must be signed before the job is commenced or merchandise is delivered).

The undersigned is authorized to execute this contract as an agent of the customer. As such, the undersigned agrees and acknowledges that this contract for services, materials, products, and/or supplies includes all of and only those terms and conditions appearing on the front and back of this document. No additional or substitute terms and/or conditions shall become a part of this contract without the written consent of an officer of Basic Energy Services LP.

SIGNED: [Signature]  
(WELL OWNER, OPERATOR, CONTRACTOR OR AGENT)

ITEM/PRICE REF. NO.	MATERIAL, EQUIPMENT AND SERVICES USED	UNIT	QUANTITY	UNIT PRICE	\$ AMOUNT
C1311	FR-7	gal	259		
C2315	580 ml	gal	93		
C704	KCL substitute	gal	185		
C604	Bio-3 Biocide	lb	20		
C505	XPA Breaker	gal	72		
P504	Activator 730	gal	94		
PK209	30/50 mesh Northern White Sand	cwt	1320		
PK212	16/30 mesh Northern White Sand	cwt	280		
P402	Resin Coated 16/30 mesh	cwt	120		
E101	Heavy mileage	mi	1900		
E100	Pickup mileage	mi	280		
E113	Bulk Delivery Charges	fm	12,040		
E437	2250 AAP frac pump charges	eg	4		
B207	Blender 7-803Pm	eg	1		
T101	Treatment Unit	eg	1		
P800	20/40 mesh or smaller prop pump	cwt	1320		
P801	16/30 mesh or larger prop pump	cwt	400		
P900	1 to 4 ppg. Proppant Concentration	gal	28,000		
E600	Sand Field Storage Unit	eg	1		
SUB TOTAL					
CHEMICAL / ACID DATA:					
SERVICE & EQUIPMENT					%TAX ON \$
MATERIALS					%TAX ON \$
TOTAL					

SERVICE REPRESENTATIVE <u>Paibe, Anthony</u>	THE ABOVE MATERIAL AND SERVICE ORDERED BY CUSTOMER AND RECEIVED BY: <u>[Signature]</u>
FIELD SERVICE ORDER NO. <u>J. Westerman</u>	(WELL OWNER OPERATOR CONTRACTOR OR AGENT)

Customer <b>LASSO ENERGY</b>	Lease No.	Date <b>10-4-13</b>
Lease <b>RAIR</b>	Well # <b>1</b>	
Field Order # <b>UC033A</b>	Station <b>PRATT KANSAS</b>	Casing <b>5 1/2</b>
Type Job <b>20 TANK SITUATION FRACTIONNEMENT</b>	Formation <b>MZSF</b>	Legal Description <b>23-25-1-1-1</b>
	Depth	County <b>COWLEY</b>
		State <b>KS</b>

PIPE DATA		PERFORATING DATA		FLUID USED		TREATMENT RESUME		
Casing Size <b>5 1/2</b>	Tubing Size	Shots/Ft <b>22 HITS</b>		Acid	RATE	PRESS	ISIP	<b>743</b>
Depth	Depth	From <b>3046</b>	To <b>3046</b>	Pre Pad	Max <b>77.6</b>	<b>2024</b>	5 Min.	<b>169</b>
Volume <b>77.3</b>	Volume	From <b>3063</b>	To <b>3077</b>	Pad <b>7600 GALLON SITUATION</b>	Min <b>76.6</b>	<b>1697</b>	10 Min.	<b>149</b>
Max Press <b>77.3</b>	Max Press	From	To	Frac <b>29100 GALLON SITUATION</b>	Avg <b>77.3</b>	<b>1850</b>	15 Min.	<b>136</b>
Well Connection	Annulus Vol.	From	To		HHP Used		Annulus Pressure	
Plug Depth	Packer Depth	From	To	Flush <b>4600 GALLON SITUATION</b>	Gas Volume		Total Load <b>9043</b>	

Customer Representative <b>RALPH KRIS</b>	Station Manager <b>KRISTEN GARDNER</b>	Treater <b>KEVIN JACOBSON</b>
Service Units <b>21143 75805 71153 38950 19951 26742 25744 21954 19852 21158 19911 15422 25114 36955 19900 27715</b>		
Driver Names <b>KEVIN JACOBSON MARK PICHARD JOHN CHUCK JERRY JAMES RYAN DANIEL</b>		

Time	Casing Pressure	Tubing Pressure	Bbls. Pumped	Rate	Service Log
10:15					ON LOCATION - SAFETY MEETING - SETUP
11:57	7560				PREP UP - PRESSURE TEST
11:56	26			37	START 7600 GALLON PAD
11:56	823		11	13.7	HOLE LOADED
12:02	1108		99	28.5	ESTABLISH RATE
12:04	1266		166	40.5	INCREASE RATE
12:05	1393		211	52.5	INCREASE RATE
12:06	1731		290	67.6	INCREASE RATE
12:09	1993		446	77.3	INCREASE RATE
12:27	2010		1810	77.1	START 27000 GALLON .1" 3/8
12:28	2015		1883	77.1	.1" 3/8 ON BOTTOM
12:33	2024		2336	77.1	START 25000 GALLON .2" 3/8
12:34	2023		2409	77.1	.2" 3/8 ON BOTTOM
12:41	1991		2936	77	START 26000 GALLON .3" 3/8
12:42	1984		3010	77.1	.3" 3/8 ON BOTTOM
12:49	1941		3564	77	START 26000 GALLON .4" 3/8
12:50	1934		3637	77.1	.4" 3/8 ON BOTTOM
12:59	1887		4291	77.1	START 30000 GALLON .5" 3/8
1:00	1890		4364	77.2	.5" 3/8 ON BOTTOM
1:08	1847		5022	77.2	START 30000 GALLON .6" 3/8
1:09	1843		5095	77.1	.6" 3/8 ON BOTTOM
1:18	1833		5756	77.4	START 30000 GALLON .7" 3/8

Customer WASSO Energy	Lease No.	Date 10-4-13
Lease PRAIRIE	Well #1	
Field Order # 1168330	Station PRATT	Casing 3 1/2
		Depth
Type Job 20 TANK SUCROSE FRAC N/W	Formation MUSSE	County CLAY
		State KS
		Legal Description 25-23-16

PIPE DATA		PERFORATING DATA		FLUID USED	TREATMENT RESUME		
Casing Size 2	Tubing Size	Shots/Ft	2.2 units	Acid	RATE	PRESS	ISIP 343
Depth	Depth	From 3046	To 3046	Pre Pad	Max 77.6	2024	5 Min. 169
Volume 73.2	Volume	From 3063	To 3077	Pad 7600 GALLON SUCROSE	Min 76.6	1697	10 Min. 149
Max Press 560	Max Press	From	To	Frac 24161 GALLON SUCROSE	Avg 77.3	1850	15 Min. 136
Well Connection	Annulus Vol.	From	To		HHP Used		Annulus Pressure
Plug Depth	Packer Depth	From	To	Flush 4662 GALLON SUCROSE	Gas Volume		Total Load 9043 lbs

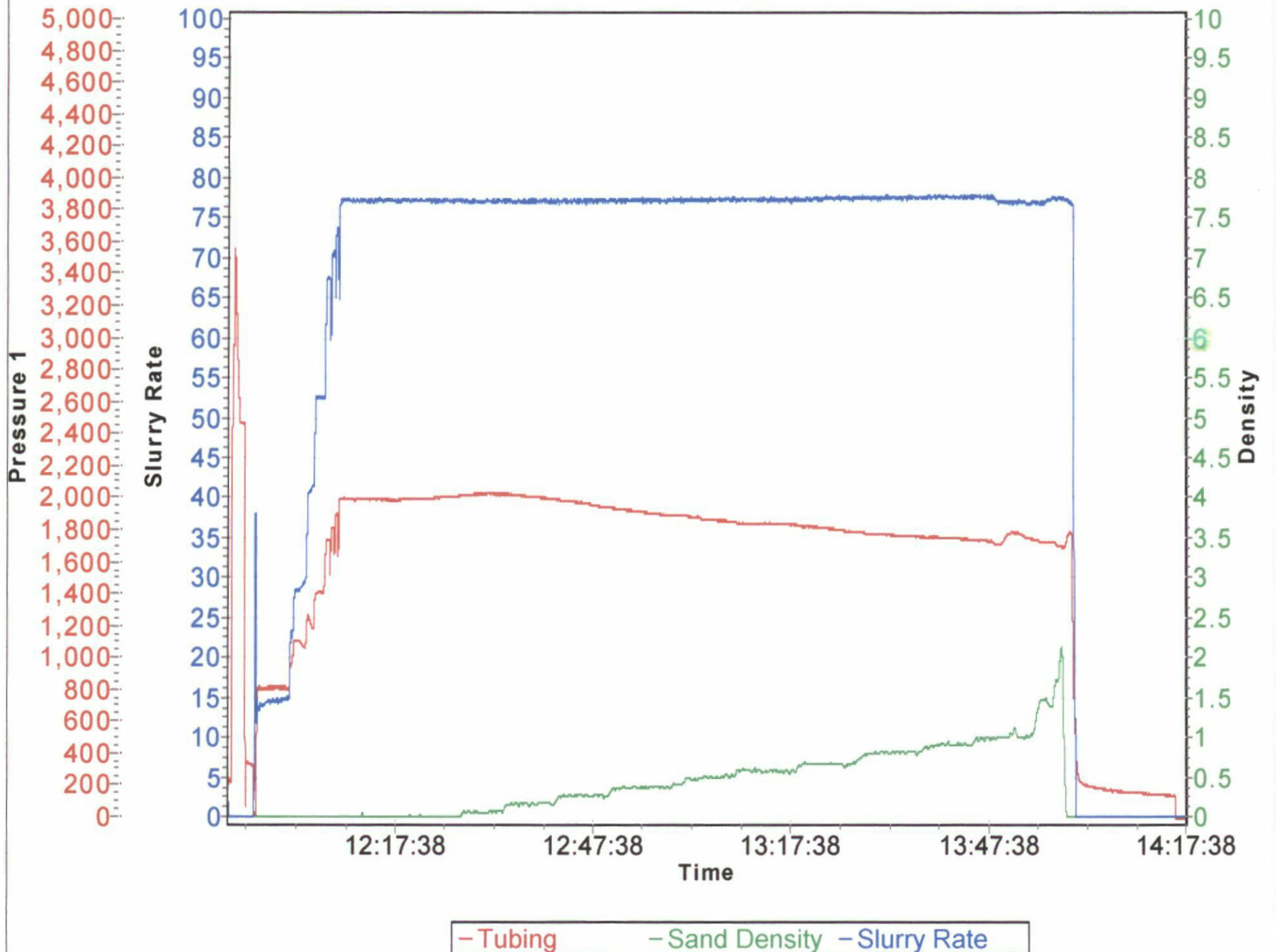
Customer Representative BILLY VANCE	Station Manager KEVIN GARDNER	Treater KARL RICE - JAW - WISSEMAN
Service Units 14556 14547	14548 14549	14550 14551
Driver Names ANDREW FINN TOD	LEWIS MATT EID	NATE

Time	Casing Pressure	Tubing Pressure	Bbls. Pumped	Rate	Service Log
1:19	1823		5829	77.2	7" 30/64 ON BOTTOM
1:27	1789		6493	77.6	START 3000 GALLON 8" 30/64
1:38	1780		6566	77.5	8" 30/64 ON BOTTOM
1:37	1755		7233	77.4	START 3000 GALLON 9" 30/64
1:38	1747		7306	77.4	9" 30/64 ON BOTTOM
1:46	1730		7977	77.6	START 30889 GALLON 1" 10/64
1:47	1728		8050	77.5	1" 10/64 ON BOTTOM
1:55	1723		8746	76.6	START 4600 GALLON 1 1/2" 10/64 RESIN CAT
1:56	1719		8819	77.2	1 1/2" 10/64 RESIN ON BOTTOM
1:58	1694		8847	77.2	START 3272 GALLON 2" 10/64 RESIN CAT
1:59	1697		8921	77.2	2" 10/64 RESIN ON BOTTOM
1:59	1697		8932	77.2	START 4662 GALLON FLUSH
2:00	343		9043		SHUT DOWN WIP CONNECTED
	343				ISIP

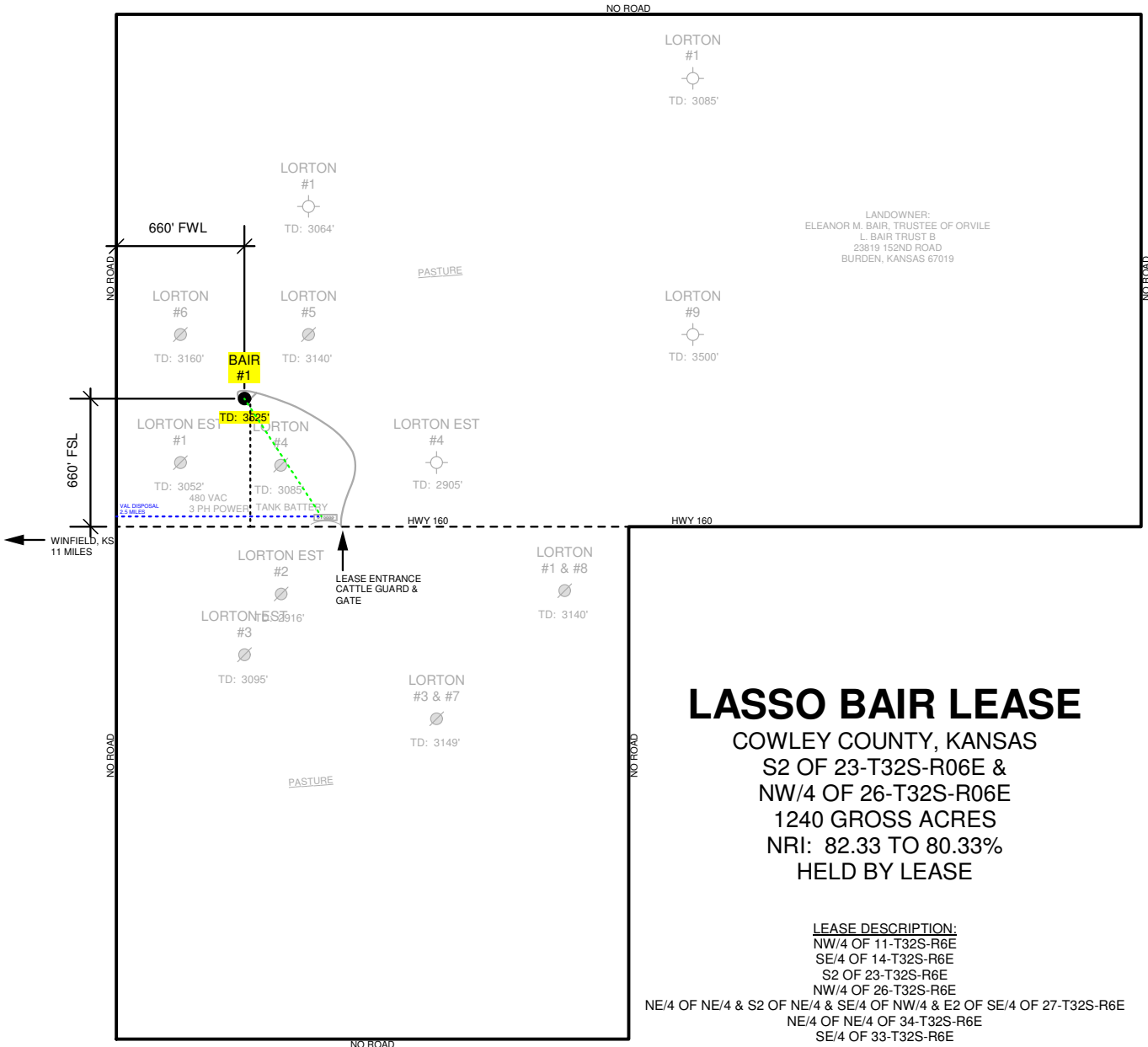
Thank You (KCV)  
PRATT



# Lasso Energy - Bair #1



<u>LASSO ENERGY LLC</u> OPERATOR	<u>BAIR</u> LEASE	<u>1</u> WELL NO.	<u>06/17/2013</u> DATE
<u>COWLEY</u> COUNTY	<u>KANSAS</u> STATE	<u>23</u> S	<u>32S</u> T
		<u>06E</u> R	
<u>ELEVATION</u>	<u>660' FSL, 660' FWL OF SEC</u> LOCATION		



- 2" POLY GAS LINE
- 3" PVC WATER DISPOSAL LINE
- 3" PVC LEAD (OIL & WATER) LINE
- LEASE ROAD

BK  
 06/17/2013  
 SURVEYED

# PROPOSED

REVISION:	LOCATION:
09/03/2013	23-T32S-R06E COWLEY COUNTY, KANSAS

WELL No:	1	REV.
----------	---	------

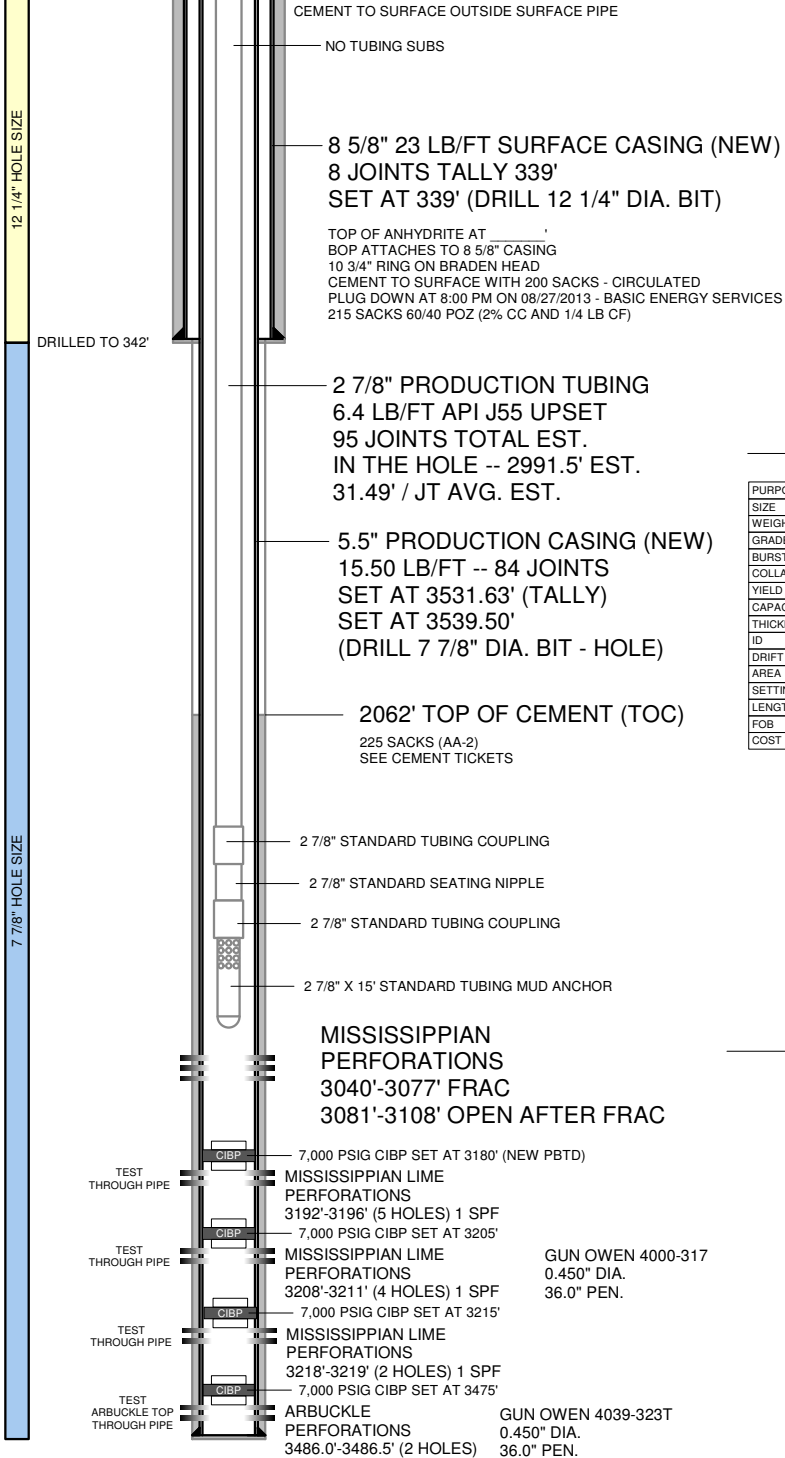
SURFACE TEMP: 80 DEG F

K.B.: 8'

5 1/2" X 2 7/8" TUBING HEAD

G.L. ELEVATION 1354' (SHL)

SET TOP CLPG 12" AGL



**NOTES:**

PUMPING UNIT: C - 228 - 246 - 86 (86" SURFACE STROKE)  
 CONVENTIONAL PARKERSBURG UNIT  
 50HP ELECTRIC MOTOR WITH 50 HP SPOCC VFD  
 VFD INSTALLED  
 RUN TIME: 24 HRS PER DAY  
 1.25" X 18" POLISHED ROD WITH LINER ASSEMBLY  
 2', 4', 4" AND 8" PONY RODS ON TOP EST. (7/8" GRADE D)  
 1.50" X 10' HARD LINED POLISHED ROD LINER WITH SEAL  
 47 - 7/8" GRADE D SUCKER RODS ON TOP EST.  
 71 - 3/4" GRADE D SUCKER RODS ON BOTTOM EST.  
 3 - 1.50" X 25" SINKER BAR ON TOP OF PUMP  
 ONE 4' X 7/8" GRADE D PONY ROD ON BOTTOM (TOP OF PUMP)  
 SPEED RANGE: 4 TO 15 SPM  
 MAX. SPEED: 15 SPM  
 MAX. DISPLACEMENT: 500 BPD (2.00" BORE PUMP)  
 MAX. DISPLACEMENT: 900 BPD (2.75" BORE PUMP W/TUBING ANCHOR)

**TUBULARS**

PURPOSE SIZE	CONDUCTOR 13 3/8"	SURFACE 8 5/8"	INTERMEDIATE	PRODUCTION 5 1/2"	PROD. TUBING 2 7/8"
WEIGHT	NONE	2,946 PSIG	NONE	15.5 LB/FT	6.40 LB/FT
GRADE	NONE	J-55	NONE	J-55	J-55
BURST	NONE	24.0 LB/FT	NONE	4,812 PSIG	7,265 PSIG
COLLAPSE	NONE	381,395 LBF	NONE	4,043 PSIG	7,676 PSIG
YIELD	NONE	1,434 PSIG	NONE	248,274 LBF	99,661 LBF
CAPACITY	NONE	0.064 BBL/FT	NONE	0.024 BBL/FT	0.006 BBL/FT
THICKNESS	NONE	0.2640"	NONE	0.2750"	0.2170"
ID	NONE	8.0970"	NONE	4.9500"	2.4410"
DRIFT ID	NONE	7.9720"	NONE	4.8250"	2.3470"
AREA	NONE	51.49 IN2	NONE	19.42 IN2	4.68 IN2
SETTING DEPTH	NONE	339'	NONE	3,532'	3,000' TO PUMP
LENGTH	NONE	339'	NONE	3,532'	NEED 3,525'
FOB	NONE	CHASE, KS	NONE	CHASE, KS	CHASE, KS
COST	NONE	\$ / FT	NONE	\$ / FT	\$ / FT

DATE	07/29/2013
APPROVED BY	B. KELSO
AFE	TBD
API No.	15035245130000
GL ELEVATION	1354'
KB	8'
KB ELEVATION	1362'
RIG	FOSSIL #2

**MISSISSIPPIAN PERFORATIONS:**

**SINGLE STAGE FRAC (22 HOLES TOTAL)**

MISSISSIPPIAN CHERT/CHAT  
 3040'-3046' (2 SPF)  
 HEIGHT (FT): 6  
 TOTAL HOLES: 13

AND

MISSISSIPPIAN LIME  
 3063'-3077' (1 SPF)  
 HEIGHT (FT): 14  
 TOTAL HOLES: 9  
 3063, 3064, 3066, 3067, 3068,  
 3069, 3073, 3076 & 3077

**AFTER FRAC (24 HOLES)**

3081, 3082, 3083, 3084,  
 3085, 3086, 3087, 3088, 3089,  
 3098, 3099, 3100, 3101, 3102,  
 3103, 3104, 3105, 3106, 3107,  
 3108

\*(2 SPF ON 3081, 3087, 3103 & 3108)

**DOWN HOLE SUCKER ROD PUMP:**

2.00" INSERT PUMP  
 PUMP LENGTH: 16' (NICARD AND SS)  
 BOTTOM HOLD DOWN TYPE  
 TRAVELING BARREL  
 2" X 7/8" PONY ROD ON TOP OF PUMP  
 8" GAS SEPERATOR ON THE BOTTOM  
 PUMP INTAKE DEPTH: 3000' EST.  
 PUMP IS SETTING 77' ABOVE PERFS. EST.  
 LOWER PUMP INTO RAT HOLE AFTER 2 MONTHS

PBTD: 3500' MD TVD

RTD: 3541' MD TVD

LTd: 3541' MD TVD

DOWNHOLE TEMP: 120 DEG F

**BAIR #1**

COWLEY COUNTY, KANSAS

23-T32S-R06E

SHL: 660 FSL, 660 FWL

BHL: 660 FSL, 660 FWL

LORTON FIELD



Conservation Division  
Finney State Office Building  
130 S. Market, Rm. 2078  
Wichita, KS 67202-3802



Phone: 316-337-6200  
Fax: 316-337-6211  
<http://kcc.ks.gov/>

Mark Sievers, Chairman  
Thomas E. Wright, Commissioner  
Shari Feist Albrecht, Commissioner

Sam Brownback, Governor

October 11, 2013

Matt Burton  
Lasso Energy LLC  
PO Box 465  
1125 S. Main  
Chase, KS 67524-0465

Re: ACO1  
API 15-035-24513-00-00  
Bair 1  
SW/4 Sec.23-32S-06E  
Cowley County, Kansas

Dear Production Department:

We are herewith requesting that the Well Completion Form ACO-1 and attached information for the subject well be held confidential for a period of two years. We also request confidentiality for the logs for this ACO-1 which are being emailed to [kcc-well-logs@kcc.ks.gov](mailto:kcc-well-logs@kcc.ks.gov). We also request confidentiality for the well samples on this well which we will shortly submit to the KGS Well Library.

Should you have any questions or need additional information regarding subject well, please contact our office.

Respectfully,  
Matt Burton