



Confidentiality Requested:

Yes No

KANSAS CORPORATION COMMISSION 1157568
OIL & GAS CONSERVATION DIVISION

Form ACO-1

August 2013

Form must be Typed
Form must be Signed
All blanks must be Filled

WELL COMPLETION FORM
WELL HISTORY - DESCRIPTION OF WELL & LEASE

OPERATOR: License # _____

Name: _____

Address 1: _____

Address 2: _____

City: _____ State: _____ Zip: _____ + _____

Contact Person: _____

Phone: (_____) _____

CONTRACTOR: License # _____

Name: _____

Wellsite Geologist: _____

Purchaser: _____

Designate Type of Completion:

- New Well Re-Entry Workover
- Oil WSW SWD SIOW
- Gas D&A ENHR SIGW
- OG GSW Temp. Abd.
- CM (Coal Bed Methane)
- Cathodic Other (Core, Expl., etc.): _____

If Workover/Re-entry: Old Well Info as follows:

Operator: _____

Well Name: _____

Original Comp. Date: _____ Original Total Depth: _____

- Deepening Re-perf. Conv. to ENHR Conv. to SWD
- Plug Back Conv. to GSW Conv. to Producer
- Commingled Permit #: _____
- Dual Completion Permit #: _____
- SWD Permit #: _____
- ENHR Permit #: _____
- GSW Permit #: _____

Spud Date or Recompletion Date	Date Reached TD	Completion Date or Recompletion Date
-----------------------------------	-----------------	---

API No. 15 - _____

Spot Description: _____

_____ - _____ - _____ Sec. _____ Twp. _____ S. R. _____ East West

_____ Feet from North / South Line of Section

_____ Feet from East / West Line of Section

Footages Calculated from Nearest Outside Section Corner:

- NE NW SE SW

GPS Location: Lat: _____, Long: _____
(e.g. xx.xxxxx) (e.g. -xxx.xxxxx)

Datum: NAD27 NAD83 WGS84

County: _____

Lease Name: _____ Well #: _____

Field Name: _____

Producing Formation: _____

Elevation: Ground: _____ Kelly Bushing: _____

Total Vertical Depth: _____ Plug Back Total Depth: _____

Amount of Surface Pipe Set and Cemented at: _____ Feet

Multiple Stage Cementing Collar Used? Yes No

If yes, show depth set: _____ Feet

If Alternate II completion, cement circulated from: _____

feet depth to: _____ w/ _____ sx cmt.

Drilling Fluid Management Plan

(Data must be collected from the Reserve Pit)

Chloride content: _____ ppm Fluid volume: _____ bbls

Dewatering method used: _____

Location of fluid disposal if hauled offsite:

Operator Name: _____

Lease Name: _____ License #: _____

Quarter _____ Sec. _____ Twp. _____ S. R. _____ East West

County: _____ Permit #: _____

AFFIDAVIT

I am the affiant and I hereby certify that all requirements of the statutes, rules and regulations promulgated to regulate the oil and gas industry have been fully complied with and the statements herein are complete and correct to the best of my knowledge.

Submitted Electronically

KCC Office Use ONLY

- Confidentiality Requested
Date: _____
- Confidential Release Date: _____
- Wireline Log Received
- Geologist Report Received
- UIC Distribution
- ALT I II III Approved by: _____ Date: _____



1157568

Operator Name: _____ Lease Name: _____ Well #: _____

Sec. _____ Twp. _____ S. R. _____ East West County: _____

INSTRUCTIONS: Show important tops of formations penetrated. Detail all cores. Report all final copies of drill stems tests giving interval tested, time tool open and closed, flowing and shut-in pressures, whether shut-in pressure reached static level, hydrostatic pressures, bottom hole temperature, fluid recovery, and flow rates if gas to surface test, along with final chart(s). Attach extra sheet if more space is needed.

Final Radioactivity Log, Final Logs run to obtain Geophysical Data and Final Electric Logs must be emailed to kcc-well-logs@kcc.ks.gov. Digital electronic log files must be submitted in LAS version 2.0 or newer AND an image file (TIFF or PDF).

Drill Stem Tests Taken <input type="checkbox"/> Yes <input type="checkbox"/> No <i>(Attach Additional Sheets)</i> Samples Sent to Geological Survey <input type="checkbox"/> Yes <input type="checkbox"/> No Cores Taken <input type="checkbox"/> Yes <input type="checkbox"/> No Electric Log Run <input type="checkbox"/> Yes <input type="checkbox"/> No List All E. Logs Run: _____	<input type="checkbox"/> Log Formation (Top), Depth and Datum <input type="checkbox"/> Sample Name Top Datum
--	---

CASING RECORD <input type="checkbox"/> New <input type="checkbox"/> Used							
Report all strings set-conductor, surface, intermediate, production, etc.							
Purpose of String	Size Hole Drilled	Size Casing Set (In O.D.)	Weight Lbs. / Ft.	Setting Depth	Type of Cement	# Sacks Used	Type and Percent Additives

ADDITIONAL CEMENTING / SQUEEZE RECORD				
Purpose:	Depth Top Bottom	Type of Cement	# Sacks Used	Type and Percent Additives
<input type="checkbox"/> Perforate <input type="checkbox"/> Protect Casing <input type="checkbox"/> Plug Back TD <input type="checkbox"/> Plug Off Zone				

Did you perform a hydraulic fracturing treatment on this well? Yes No *(If No, skip questions 2 and 3)*
 Does the volume of the total base fluid of the hydraulic fracturing treatment exceed 350,000 gallons? Yes No *(If No, skip question 3)*
 Was the hydraulic fracturing treatment information submitted to the chemical disclosure registry? Yes No *(If No, fill out Page Three of the ACO-1)*

Shots Per Foot	PERFORATION RECORD - Bridge Plugs Set/Type Specify Footage of Each Interval Perforated	Acid, Fracture, Shot, Cement Squeeze Record <i>(Amount and Kind of Material Used)</i>	Depth

TUBING RECORD: Size: _____ Set At: _____ Packer At: _____ Liner Run: Yes No

Date of First, Resumed Production, SWD or ENHR. _____ Producing Method:
 Flowing Pumping Gas Lift Other *(Explain)* _____

Estimated Production Per 24 Hours	Oil Bbls.	Gas Mcf	Water Bbls.	Gas-Oil Ratio	Gravity

DISPOSITION OF GAS: <input type="checkbox"/> Vented <input type="checkbox"/> Sold <input type="checkbox"/> Used on Lease <i>(If vented, Submit ACO-18.)</i>	METHOD OF COMPLETION: <input type="checkbox"/> Open Hole <input type="checkbox"/> Perf. <input type="checkbox"/> Dually Comp. <input type="checkbox"/> Commingled <i>(Submit ACO-5)</i> <input type="checkbox"/> Other <i>(Specify)</i> _____ <input type="checkbox"/> Other <i>(Specify)</i> _____	PRODUCTION INTERVAL: _____ _____
--	---	---

Form	ACO1 - Well Completion
Operator	HERMAN L. LOEB, LLC
Well Name	COOLHAND 1-26
Doc ID	1157568

Tops

Name	Top	Datum
Heebner Shale	4380	-2085
Toronto	4396	-2101
Lansing	4556	-2261
BKC	5161	-2866
Marmaton	5178	-2883
Pawnee	5297	-3002
Cherokee Shale	5356	-3061
Morrow Shale	5616	-3321
Miss. Chester	5636	-3341
St. Genevieve	5921	-3626
St. Louis	6021	-3726
Spergen	6354	-4059
Cowley	6788	-4493
Viola	7112	-4817
Simpson Shale	7304	-5009
Simpson Sand	7354	-5059
Arbuckle	7378	-5083

LITHOLOGY STRIP LOG

WellSight Systems

Scale 1:240 (5"=100') Imperial

Well Name: Coolhand #1-26
Location: 1666' FNL & 335' FWL, Sec. 26-T33S-R26W, Meade Co., KS.
Licence Number: 15-119-21344-0000 Region: Wildcat
Spud Date: 7/23/2013 Drilling Completed: 8/17/2013
Surface Coordinates: 1666' FNL & 335' FWL, Sec. 26-T33S-R26W

Bottom Hole Same as above
Coordinates:
Ground Elevation (ft): 2284' K.B. Elevation (ft): 2295'
Logged Interval (ft): 4350' To: 7500' Total Depth (ft): 7500'
Formation: Arbuckle FM. at Total Depth
Type of Drilling Fluid: Freshwater/Gel to 2990'; Chemical Gel 2990' to 7500'

Printed by MUD.LOG from WellSight Systems 1-800-447-1534 www.WellSight.com

OPERATOR

Company: Herman L. Loeb, LLC.
Address: P.O. Box 838
Lawrenceville, IL. 62439-0838

GEOLOGIST

Name: Jon D. Christensen
Company: Consulting Petroleum Geologist
Address: 9002 W. Silver Hollow St.
Wichita, KS. 67205-8856

Cores

None Taken

DSTs

DST #1(Pawnee) 5284' - 5317'(Corrected Depths to LOG) Test Times 15"-45"-45"-90" IFP Weak 0.5" Blow, FFP Strong Blow BOB/13", No Blowback on SI's; REC: 465' Gas in Pipe, 35' GOCM(6%G, 6%O, 88%M), no water; IFP 18-21#, ISIP 1121#, FFP 21-32#, FSIP 1810# and building, IHP 2564#, FHP 2557#, BHT 119 Deg. F.

DST #2(Miss. Chester/Chester 'C') 5683' - 5736'(Corrected Depths to LOG) Test Times 15"-45"-30"-60" IFP Weak Blow built to 1.5", FFP Weak 1.5" Blow building to 2", no Blowback on SI's; REC: 35' Gas in Pipe, 25' Drlg. Mud, no oil shows; IFP 31-27#, ISIP 101#, FFP 27-31#, FSIP 90#, IHP 2776#, FHP 2705#, BHT 119 Deg. F.

DST #3(Miss. Spergen) 6345' - 6395'(Straddle packer test) (Corrected Depths to LOG) Test Times 15"-45"-30"-90" IFP Strong Blow Gas to Surface/8", BOB Blowback in 31" on ISIP; FFP Gas to Surface throughout Max. Gas Gauge 230.7 MCFG(20# on 0.5" Choke) that decreased to 163.2 MCFGPD after 30" of FFP; REC: 155' GCMW(5%G, 20%W, 75%M), 310' MSW(5%M, 95%W) CI 98,000, Mud 3500; IFP 145-302#, ISIP 2230#, FFP 154-222#, FSIP 2233#, IHP 3100#, FHP 3105#, BHT 140 Deg. F.

Comments

7/23/13 MIRU Koda Drilling, set 91'(KB) of 20" Conductor; 8/2 through 8/3/13 MIRU Sterling Drilling Rig #2, Spud 12 1/4" Hole at 2:30 AM. on 8/3/13 - Drilling at 411'; 8/4/13 TD. 1408' - WOC; 8/5/13 Drilling at 1906'; 8/6/13 Drilling at 2990'; 8/7/13 Drilling at 3770'; 8/8/13 Drilling at 4920'; 8/9/13 Drilling at 5214'; 8/10/13 TD. 5321' - TOH with DST #1; 8/11/13 Drilling at 5538'; 8/12/13 TD. 5740' - TIH/CCH - Lost Circ.; 8/13/13 Drilling at 5794'; 8/14/13 TD. 6444' - CFS; 8/15/13 TD. 6444' - TIH after DST #3; 8/16/13 TD. 6950' - CFS; 8/17/13 Drilling at 7445' - RTD. 7500' at 9:50 AM., LTD. 7500'; 8/18/13 RTD. 7500', LTD. 7500' - LDDP; 8/19/13 Running 5 1/2" Production Casing - PD. at 10:30 AM.

20" Conductor set at 91'(KB) with 9.5 Yards Grout + 8 sx. of Cement. New 8 5/8"(24#) Surface Casing set at 1403' with 480 sacks of Cement(Basic Energy Services). Cement did Circulate. PD. 4:45 AM. 8/4/13.

Set new 15.5#(17#) Production Casing at 7388' w/300 sx. of "Loeb Blend" cement(Basic Energy Services). PD. at 10:30 AM. 8/19/13. Set Port Collar at 2609'.

Surveys: 0.50 Degree at 1408'(Surface Casing); 1.0 Deg. at 5050'(Bit Trip); 1.75 Deg. at 5321'(DST #1); 0.75 Deg. at 5740'(DST #2); 0.75 Deg. at 6444'(DST #3); 1.0 Deg. at 7500' RTD.

Pipe Strap at 5050'(Bit Trip): Strap 0.92' Short to the Board, no correction made to the Board.

NOTE: While drilling the Surface Hole with 12 1/4" bit, a gas pocket was encountered from 565' and continued while drilling until approx. 690' that blew gas, mud and water from the hole.


****Encountered a significant 75 Unit Gas kick in the upper Hollenberg Porosity zone from a Drilling Break from 2488' - 2500' Drillers Depths. Gas kick recycled also.****





LOG TOPS: Hollenberg Porosity 2481(-186), Heebner Shale 4380(-2085), Toronto 4396(-2101), Lansing 4556(-2261), Stark Shale 5053(-2758), BKC 5161(-2866), Marmaton 5178(-2883), Pawnee 5297(-3002), Cherokee Shale 5356(-3061), Atoka 5514(-3219), Morrow Shale 5616(-3321), Miss. Chester 5636(-3341), St. Genevieve 5921(-3626), St. Louis 6021(-3726), Spergen 6354(-4059), Cowley 6788(-4493), Viola 7112(-4817), Simpson Shale 7304(-5009), Simpson Sand 7354(-5059), Arbuckle 7378(-5083).





After review of the Halliburton Logs, DST data, samples and positive shows of commercial amounts of Hydrocarbons, the operator elected to set new 5 1/2"(17#) Production Casing for completion in the Spergen, Chester and Pawnee Zones. A Port Collar was set at 2609' for completion at a later date in the Hollenberg porosity zone.

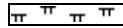

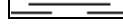
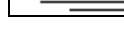
NOTE: This log was shifted upward by 2' to 4' for correlation purposes with the Halliburton LOGS.



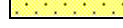

ROCK TYPES

	Anhy
	Bent
	Brec
	Cht

	Clyst
	Coal
	Congl
	Dol

	Gyp
	Igne
	Lmst
	Meta

	Mrlst
	Salt
	Shale
	Shcol

	Shgy
	Sltst
	Ss
	Till

ACCESSORIES

MINERAL

- Anhy
- Arggrn
- Arg
- Bent
- Bit
- Breclfrag
- Calc
- Carb
- Chtdk
- Chtlt
- Dol
- Feldspar
- Ferrpel
- Ferr
- Glau

- Gyp
- Hvymin
- Kaol
- Marl
- Minxl
- Nodule
- Phos
- Pyr
- Salt
- Sandy
- Silt
- Sil
- Sulphur
- Tuff

FOSSIL

- Algae
- Amph
- Belm
- Bioclst
- Brach
- Bryozoa
- Cephal
- Coral
- Crin
- Echin
- Fish
- Foram
- Fossil
- Gastro
- Oolite

- Ostra
- Pelec
- Pellet
- Pisolite
- Plant
- Strom

STRINGER

- Anhy
- Arg
- Bent
- Coal
- Dol
- Gyp
- Ls
- Mrst

- Siltstrg
- Ssstrg

TEXTURE

- Boundst
- Chalky
- Cryxln
- Earthy
- Finexln
- Grainst
- Lithogr
- Microxln
- Mudst
- Packst
- Wackest

OTHER SYMBOLS

POROSITY

- Earthy
- Fenest
- Fracture
- Inter
- Moldic
- Organic
- Pinpoint

- Vuggy

SORTING

- Well
- Moderate
- Poor

ROUNDING

- Rounded
- Subrnd
- Subang
- Angular

- Spotted
- Ques
- Dead

INTERVAL

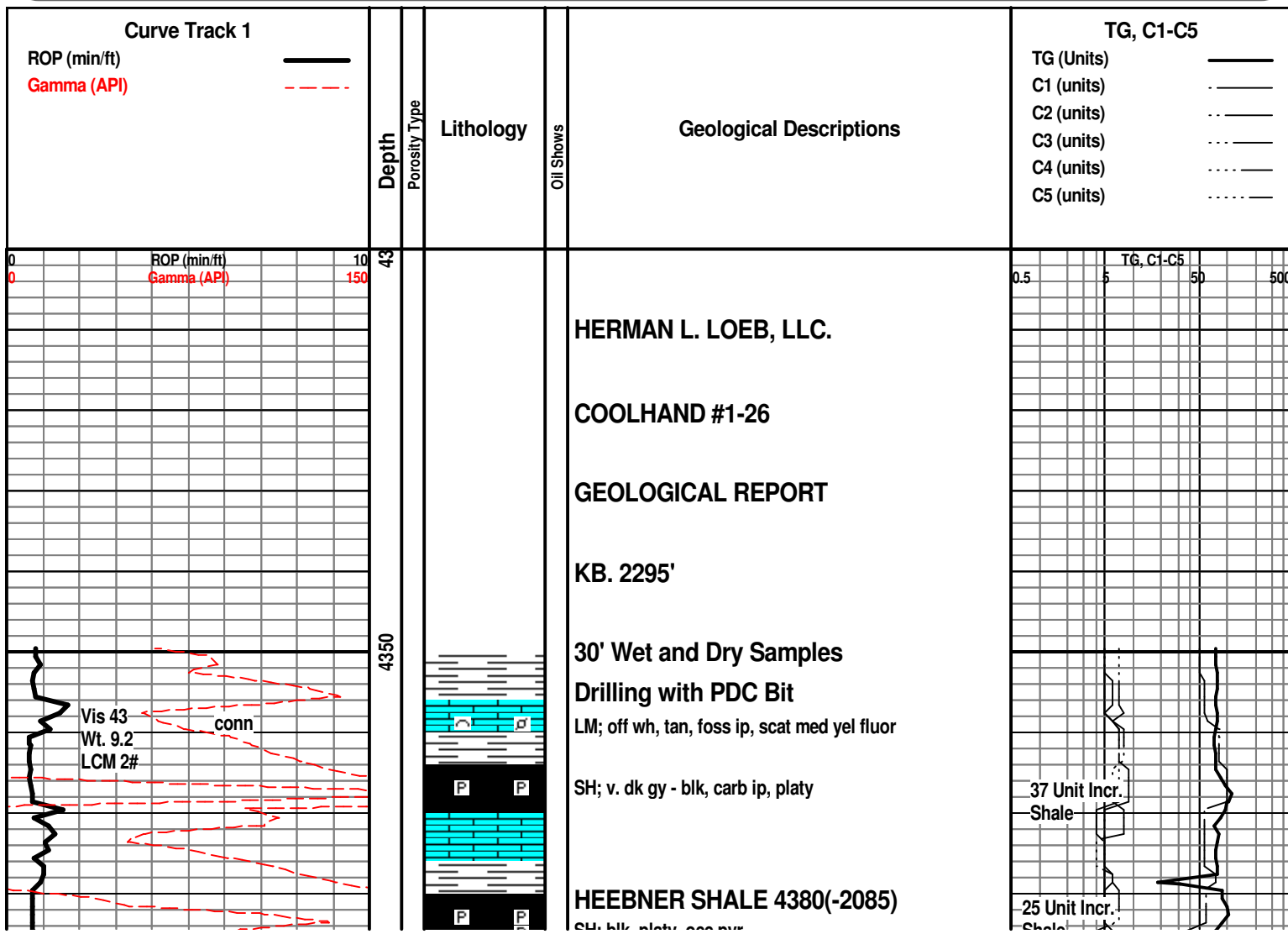
- Core
- Dst

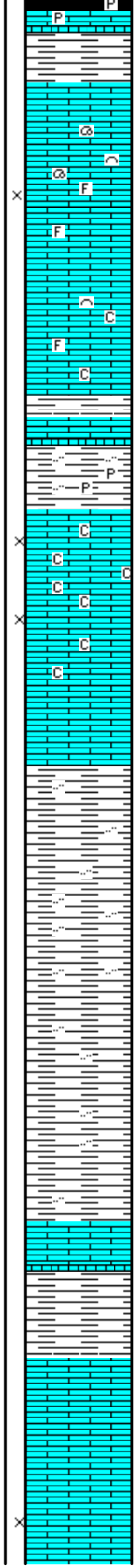
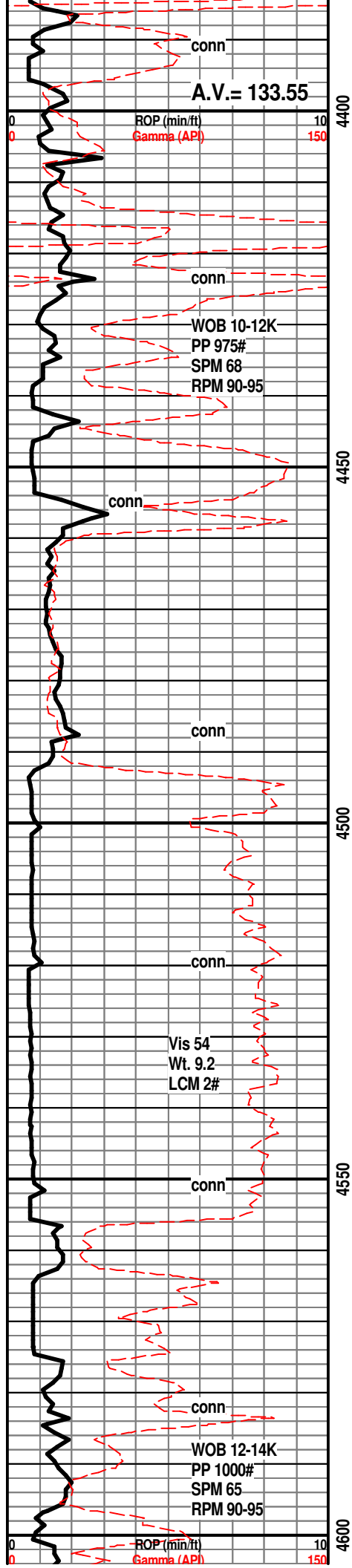
EVENT

- Rft
- Sidewall

OIL SHOW

- Even

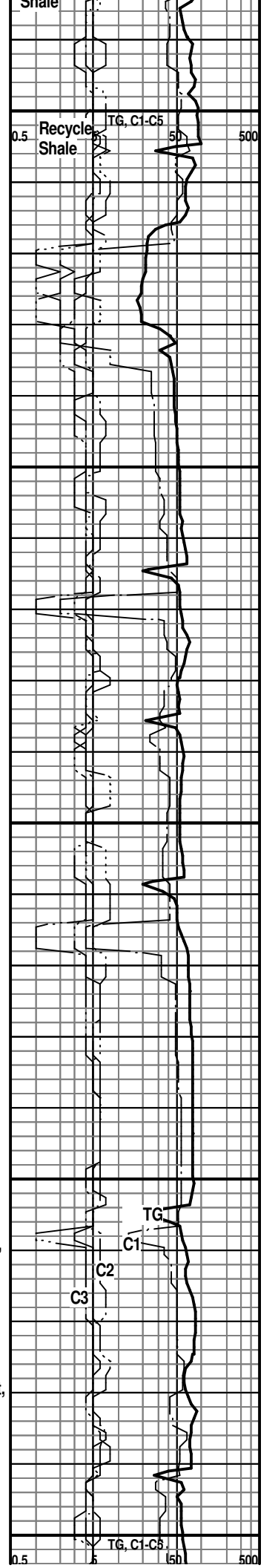


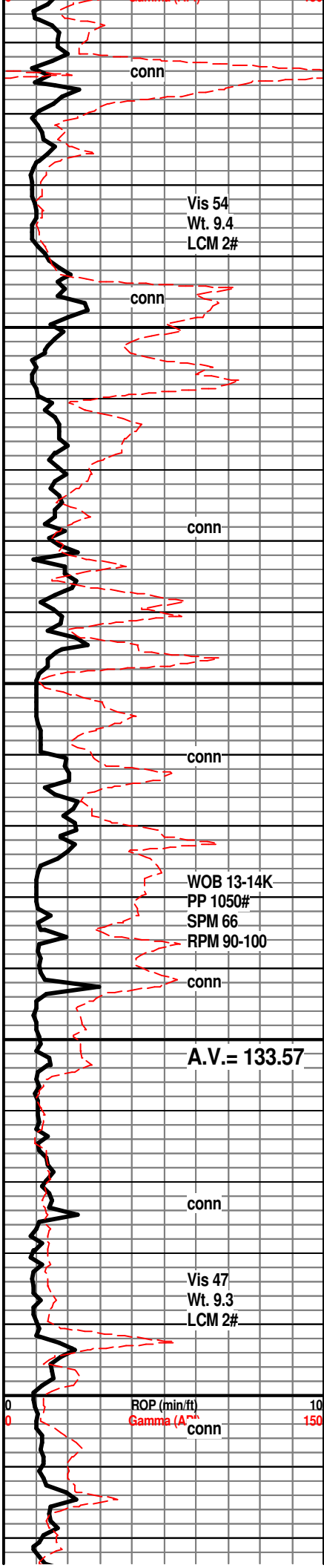


SH; blk, platy, occ pyr
LM; med brn, dense, blocky, occ pyr

TORONTO 4396(-2101)
LM; lt to med brn, hd, most blocky, tite
LM; wh, off wh, tan, scat foss mat, most well cem, scat lt to med yel min fluor, poor interpart por, no stn, ns.
LM; tan, off wh, scat foss mat, minor chalky mtx, lt to occ med yel min fluor, no stn or odor, ns.
SH; lt to med gy, pyr ip, occ silty
LM; wh, off wh, fxln w/scat cse spar calc xtals, fair interln por, minor soft chalky mtx, lt yel to wh min fluor, no stn or odor, ns.
LM; off wh, tan, fxln, most dense, scat chalky mtx, trc off wh cht, lt yel/wh min fluor, no stn, ns.
SH; med gy, silty ip, platy
SH; med gy, occ gy grn, silty, platy

LANSING 4556(-2261)
LM; med brn, dense, scat well cem foss mat, no vis por, ns.
SH; grn, gy gyn, platy
LM; lt to med brn, blocky ip, scat hd dense micritic lmst, rare tan/amber cht, no vis por, ns.
LM; tan to lt brn, fxln to micritic, blocky, trc poor interln por, no fluor, ns.





conn

Vis 54
Wt. 9.4
LCM 2#

conn

conn

conn

WOB 13-14K
PP 1050#
SPM 66
RPM 90-100

conn

A.V. = 133.57

conn

Vis 47
Wt. 9.3
LCM 2#

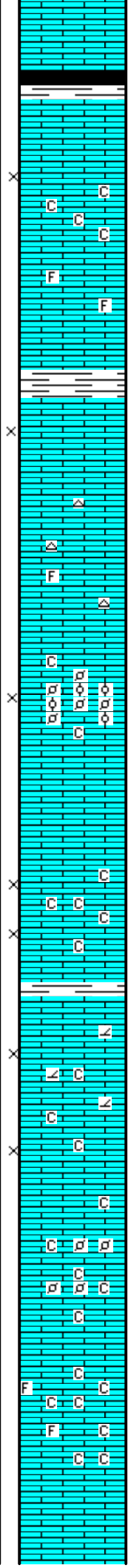
ROP (min/ft)
Gamma (A)
conn

4650

4700

4750

4800



SH; blk, platy, firm

LM; off wh, tan, buff, f to med xln, poor to fair interxln por ip, minor chalky mtx, lt yel/wh min fluor, no stn or odor, ns.

LM; off wh, lt gy, buff, med xln w/scat spar calc xtals, fair interxln por, lt to occ med yel min fluor, no vis stn, no gas kick, ns.

LM; off wh, tan, cream, foss w/scat finely pelletal/partly oolitic lmst, fair interpart por, soft chalky mtx ip, lt yel min fluor, no stn or odor, no gas kick

LM; tan to cream, buff, f to med xln, much soft chalk and chalky mtx, fair interxln por, dull to lt yel min fluor, no stn, ns.

LM; tan to lt brn, gran text ip, partly sucrosic, interbdd soft med xln chalky lmst, fair interxln por, dull yel min fluor, no stn, ns.

LM; off wh, wh, tan, foss w/scat fine pelletal lmst, much soft chalky and chalky mtx, rare dull yel min fluor, no stn, ns.

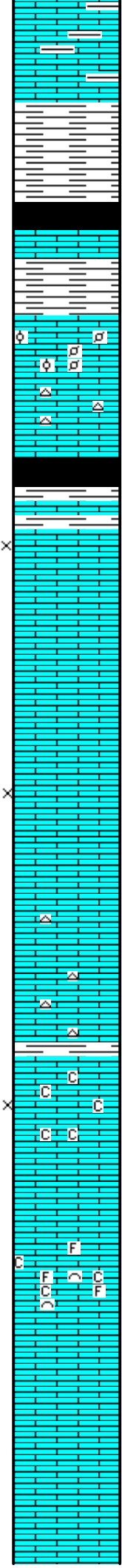
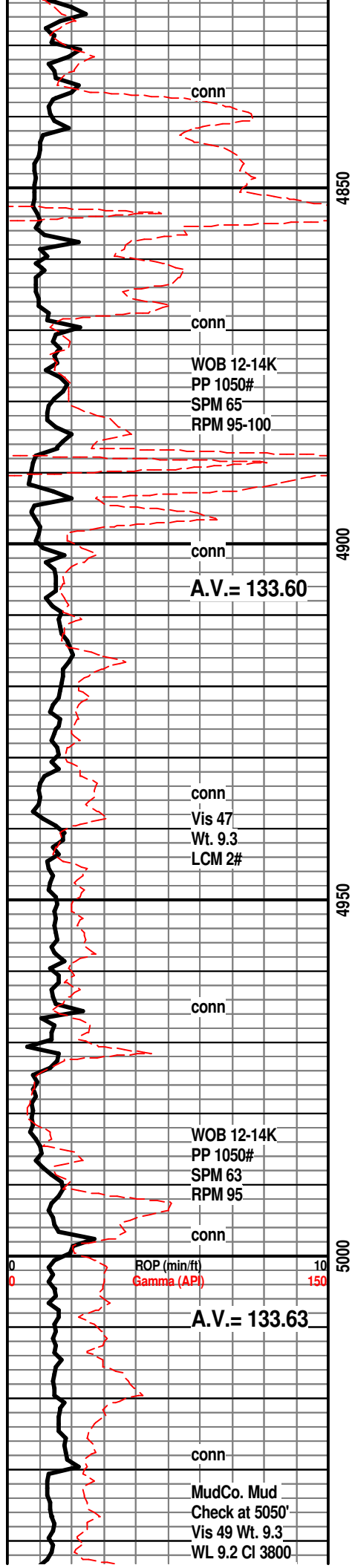
LM; wh, off wh, fxln w/fair interxln por, abnt soft chalk and chalky mtx, interbdd foss lmst, no fluor, no stn or odor, ns.

27 Unit Incr. Shale

0.5

TG, C1-C5

500



LM; tan to lt brn, gy brn, some argil, most dense, blocky, no vis por, no fluor, ns.

SH; med gy, grn, some dk gy, platy

SH; v. dk gy - blk ip, platy, smooth

LANSING/K.C. 'H' 4868(-2573)

LM; tan to lt brn, foss ip w/scat well cem small pellets and ooids, no vis por, hd, occ tan cht, no fluor, ns.

SH; blk, carb ip, soft

LM; wh, off wh, f to med xln, gd interxln por, soft, dull yel fluor, no stn, no gas kick, ns.

LM; lt gy, gran to med xln, fair interxln por, no stn or odor, no gas kick, ns.

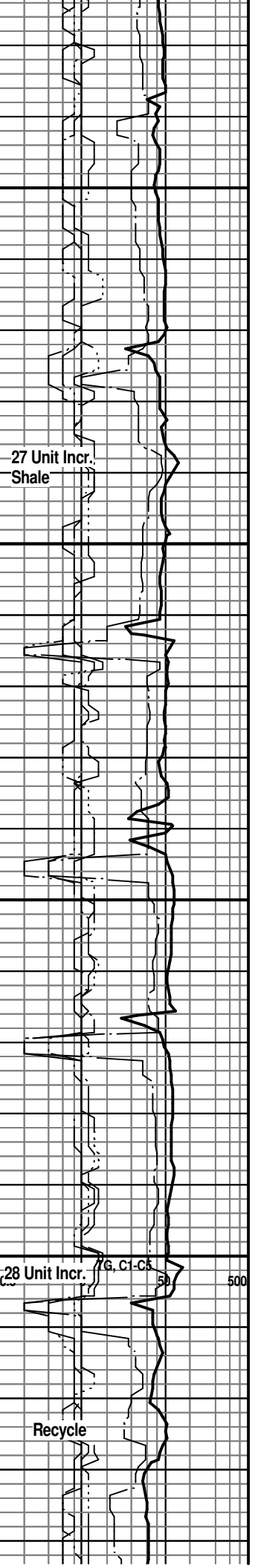
LM; tan to lt gy, lt brn, most micritic, hd, scat tan/off wh cht, no vis por, ns.

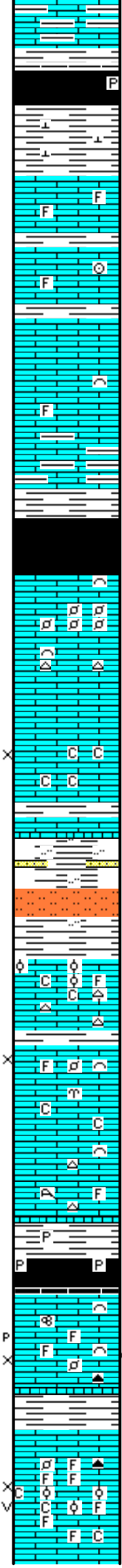
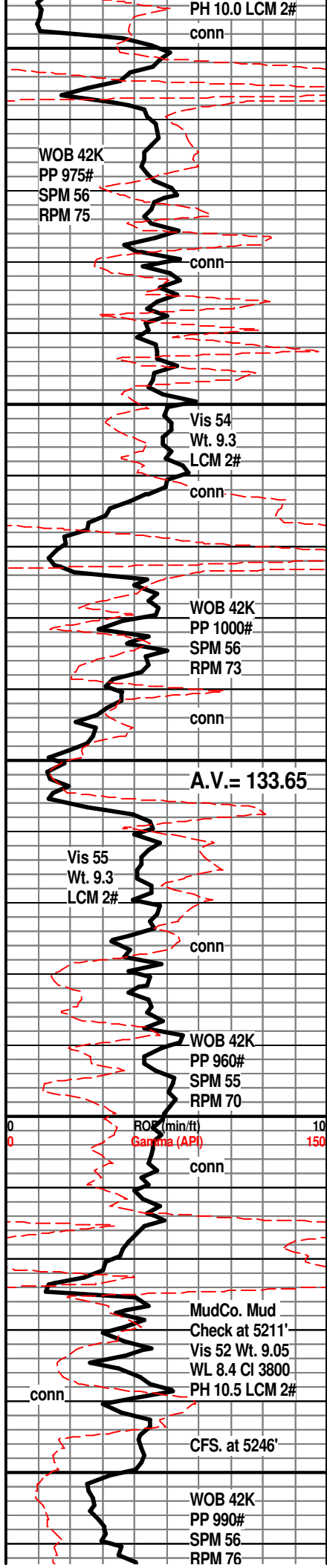
LM; wh, off wh, f to med xln, gd interxln por, occ soft chalky mtx, dull to lt yel/wh min fluor, no stn, no gas kick, ns.

LM; tan to off wh, fxln w/scat foss mat, trc poor interpart por, minor soft chalky mtx, spotty lt yel fluor, no stn or odor, no sample shows

LM; tan to off wh, buff, fxln to dense, most w/no vis por, no fluor, ns.

LM; med to dk brn, gy grn, blocky, argil ip w/interbdd dk gy lmy shale





BIT TRIP AT 5050'
STARK SHALE 5053(-2758)

SH; blk, carb ip, rare pyr, soft
SH; med to dk gy, calc, firm

LM; lt to med brn, foss ip, most well cem, blocky, no vis por, no fluor, ns.

LM; tan to buff, lt brn, foss w/interbdd fxln to partly sucrosic text, poor/no vis por, dull yel fluor, ns.

LM; dk gy, argil, dense, interbdd dk gy shale

SH; blk, carb, gassy w/gas odor, blocky

HERTHA 5124(-2829)

LM; tan to lt brn, foss, scat finely pelletal lmst, most well cem, no vis por, v. dull yel min fluor, no stn, scat lt/med brn cht, ns.

LM; tan to off wh, buff, f to med xln, soft, interbdd chalky mtz, fair interxln por, v. dull yel min fluor, no stn or odor, no gas kick, ns.

BASE KANSAS CITY 5161(-2866)

SH; lt gy, grn, silty w/interbdd sltst, pyr ip, trc vf gr qtz ss strng.

MARMATON 5178(-2883)

LM; tan to cream, off wh, foss w/scat oolites and foss hash, most well cem, minor chalky mtz, scat lt brn/tan cht, no vis por, no stn or odor, no gas kick

LM; tan to buff, lt brn, foss ip, most fxln, trc poor interxln por, minor soft chalky mtz, dull yel/wh min fluor, no stn or odor, no gas kick, ns.

SH; dk gy - blk, platy, occ pyr

NOVINGER ZONE 5225(-2930)

LM; tan to lt brn, buff, foss ip, poor interpart w/scat p-p por, trc light clr oil droplets, few pcs w/bleeding gas, med to occ brite yel/wh fluor, faint odor, fair to gd cut in few pcs, thin zone that looks tite

LM; tan to cream, off wh, foss w/gd interpart and scat vug por, rarely oolitic, occ soft chalky mtz, lt yel/wh min fluor, no stn or odor, no gas kick, ns.

18 Unit Incr. Shale

TG
C1
C2
C3
C4

150 Unit Incr. Shale

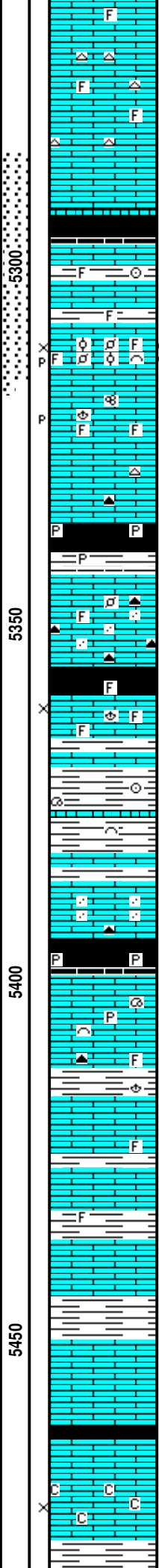
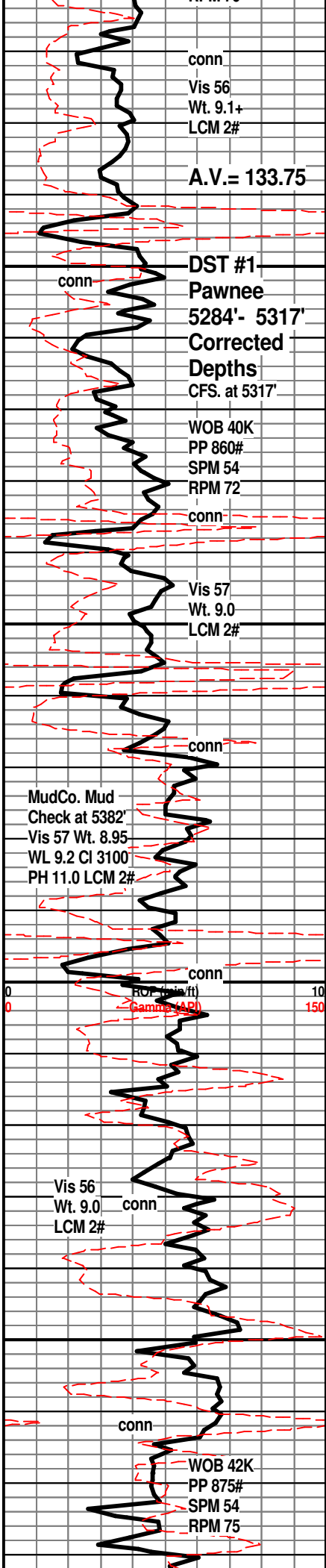
Recycle

0.5 TG, C1-C4 50 500

17 Unit Incr. Shale

30 Unit Incr. POSS. SHOW

C1 TG



LM; tan to lt brn, buff, fxln to micritic, much dense tite lms, interbdd brn to amber/gy spicular cht, minor soft chalky mtx, no vis stn, no odor, ns.

SH; blk, carb ip, platy, trc gas
PAWNEE 5297(-3002)

LM: lt to med brn, dense, micritic, blocky, tite, interbdd grn occ foss shales

LM; tan to cream, foss to med xln, fair/occ gd interxln w/scat p-p por, spotted/even lt brn stn, trc gassy FO, gd odor, med/brite yel fluor, fair to gd cut

DST #1: Pawnee 5284' - 5317'(Corrected Depths to LOG)

LM; off wh, cream, tan, foss ip w/spotty p-p por, few pcs. w/lt brn oil stn, v. faint odor(could be slough from zone above), scat med yel fluor, most dense, occ cherty

SH; blk, carb, occ pyr

LM; med brn, foss ip, scat smoky to dk brn cht, no vis por, dull yel min fluor, no stn or odor, interbdd hd gritty tite lms, ns.

CHEROKEE SHALE 5356(-3061)

SH; blk, blocky, trc gas, trc foss.

LM; med brn, foss w/trc poor interpart por, lt yel min fluor, no stn or odor, ns.

SH; med gy, grn, v. firm, calc w/interbdd hd dk gy/gy brn lms strngs, foss ip

LM; med brn, dense, some gritty text - sandy ip, most dense, no vis por, no fluor, ns.

SH; blk, carb ip, occ pyr, gassy

LM; lt to med brn, scat foss mat, most well cem, blocky, rare spar calc xtals, minor pyr, no vis por, dull yel min fluor, ns.

SH; med gy, platy, foss ip.

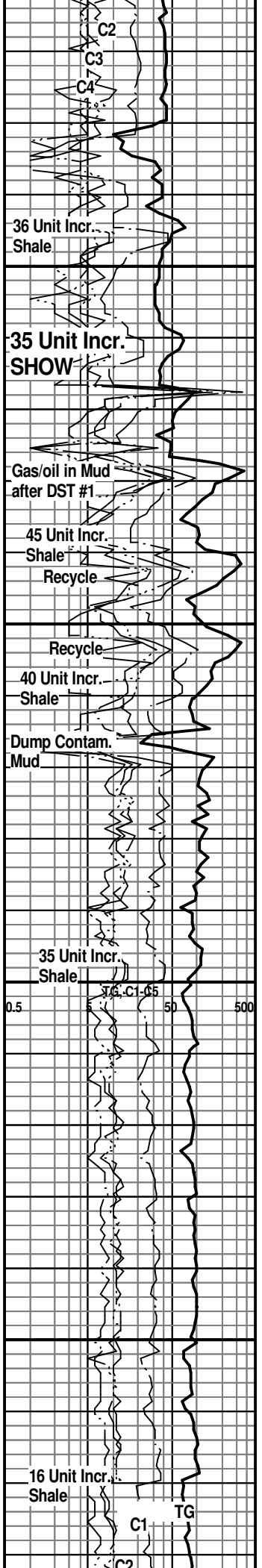
LM; med to occ dk brn, foss ip, interbdd med to dk gy shales, tite

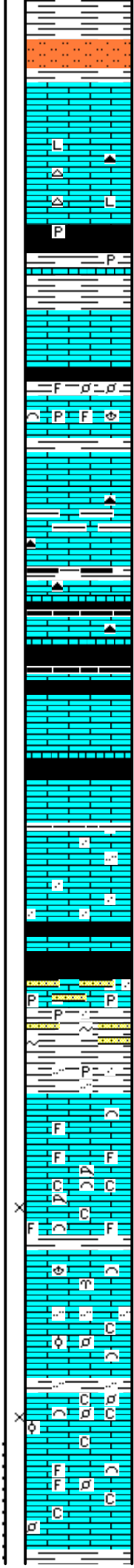
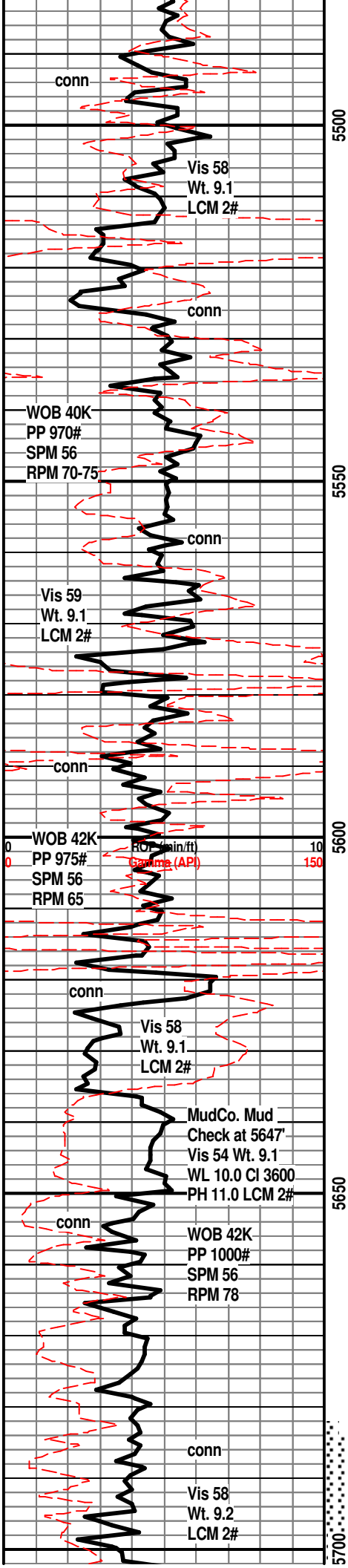
LM; tan to lt brn, fxln, most dense - micritic, blocky, no vis por, ns.

LM; tan to buff, lt brn, micritic, no vis por, ns.

SH; dk gy - blk, platy

LM; tan to off wh, buff, med xln w/interbdd soft chalky mtx, fair interxln por, dull yel min fluor, no stn or odor, no gas kick





SH; med to dk gy, sandy to silty, interbdd sltst, v. firm

LM; med brn, dense, some litho, hd, rare brn to smoky cht, tite

ATOKA 5514(-3219)

SH; dk gy - blk, platy, occ pyr, interbdd hd shaly lmt strng.

LM; med brn, most micritic, blocky, no vis por, no fluor, ns.

SH; dk gy - blk, foss - small pellets, firm

LM; med brn, foss ip, blocky, rare pyr, tite

LM; med brn, gy brn, argil ip, most dense, micritic, no vis por, no fluor, rare brn/amber cht, ns.

SH; dk gy, blk, platy

LM; med to dk brn, dk gy, dense, micritic, rare smoky/brn cht

SH; blk, carb ip, platy

LM; med to dk gy, rare dk gy brn, dense, tite

SH; dk gy - blk, platy

LM; med to dk brn, dk gy, hd, interbdd thin grn shale strngs, tite

LM; med to dk brn, dense, some gritty to sandy text, no vis por, no fluor, ns.

MORROW SHALE 5616(-3321)

LM; med/dk gy, sandy, v. hd, pyr ip, no vis por, no fluor, interbdd v. lmy tite ss, ns.

SH; med gy, soft - fiss, occ dissem pyr, interbdd vf to f gr qtz argil ss strng w/trc glau, no clean ss dev, ns.

MISS. CHESTER 5636(-3341)

LM; med brn, cse xln, scat cse foss frags and spar calc xtals, lt yel/wh fluor, no stn, ns.

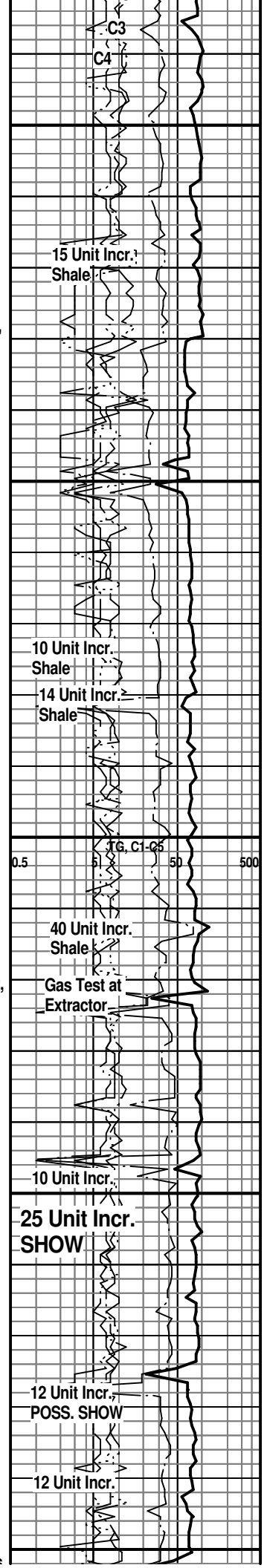
LM; lt brn, cse xln w/scat foss frags - few corals, med yel fluor, trc gas bubbles, poor/fair interxln por, no vis stn/odor, no cut, chalky mtx

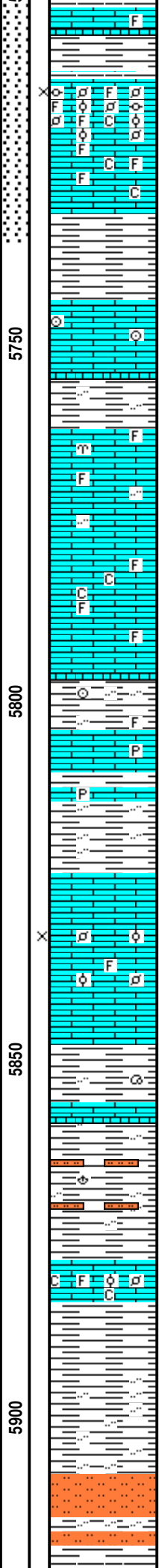
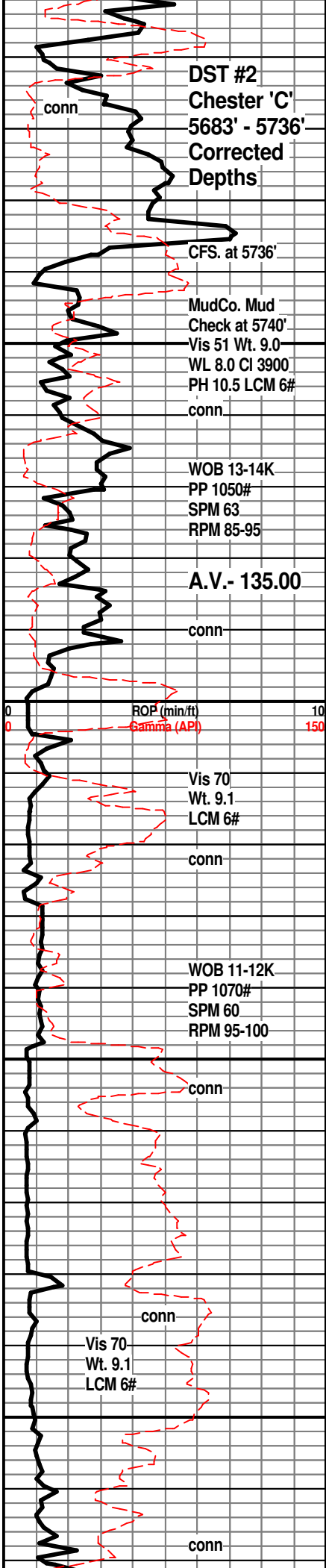
LM; med brn, gy brn, scat cse xln w/foss frags, well cem, dull yel fluor, no vis por, ns.

SH; grn, silty, platy

LM; off wh, tan, buff, med to cse xln w/abnt foss frags, scat pellets and ooids, partly chalky mtx, lt/med yel fluor, scat poor to fair interxln por, no vis stn, trc gas bubbles, no odor

LM; med brn, med brn, argil ip, foss - well cem, no vis





LM; med gy, med gy brn, argil ip, foss - well cem, no vis por, dull to lt yel fluor, no stn, ns.

SH; med gy, v. soft, fiss

CHESTER 'C' ZONE 5713(-3418)

LM; tan to lt brn, v. foss w/cse foss fragments and oolites/pellets, loosely cem, fair interpart por, med yel fluor, faint gas odor, sev. gas bubbles visible, no oil stn, no cut - gas show

LM; tan to lt brn, foss, most well cem, minor soft chalky mtx, lt yel fluor, no vis stn, tite

**DST #2: Chester 'C' 5683' - 5736'
Corrected Depths to LOG**

NOTE: Drilling with PDC bit

LM; lt brn, foss ip(crinoids), dense, argil ip, tite

SH; med gy, gy brn, grn, trc blk, platy, occ silty

LM; tan to lt brn, med to occ cse xln, most dense, foss ip, dull yel fluor, ns.

SAMPLES VERY FINE - GROUND UP

LM; tan to lt gy, buff, fxln w/scat foss mat, most well cem, minor chalky mtx, interbdd micrite, dull to lt yel fluor, no stn or odor, no gas kick, ns.

SH; med gy, soft, platy, occ foss

LM; tan to lt brn, off wh, fxln to dense, scat pyr, hd, tite

SH; med gy, gy grn, silty ip.

POOR SAMPLES - GROUND UP

LM; tan to cream, buff, med xln w/abnt foss mat, trc poor interxln por, dull to occ lt yel fluor, no vis stn, no gas kick, ns.

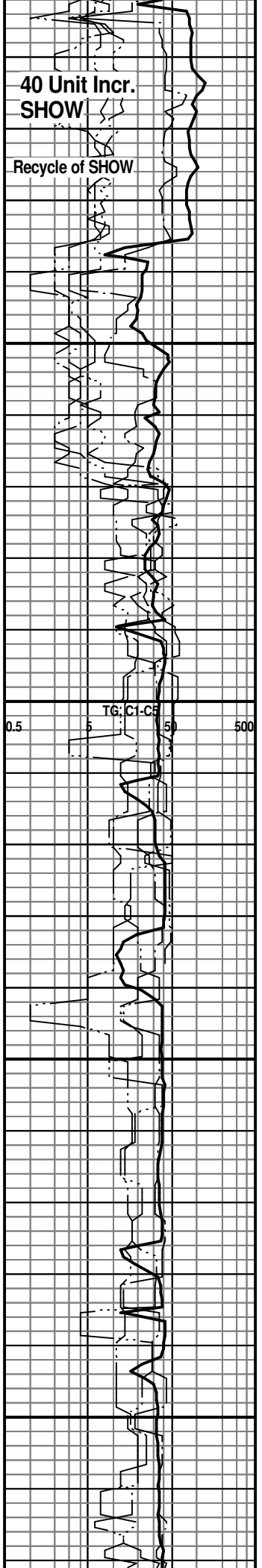
SH; med gy, gy grn, foss, soft ip, platy

SH; med gy, gy grn, fiss, occ silty w/interbdd sltst.

LM; tan to off wh, lt brn, cse xln w/abnt foss mat, pellets and oolites, soft chalky mtx ip, dull yel fluor, no stn or odor, ns.

SH; gy grn, some bright sea grn, silty ip, platy

SLTST; grn, gy grn, some lmy ip, most soft



WOB 11-13K
PP 1075#
SPM 62
RPM 98

conn

5950

conn
MudCo. Mud
Check at 5986'
Vis 60 Wt. 8.9
WL 11.6 Cl 3400
PH 9.0 LCM 4#

ROP (min./ft)
Gamma (API)

10
150

6000

conn

WOB 13-15K
PP 950#
SPM 60
RPM 98

conn

6050

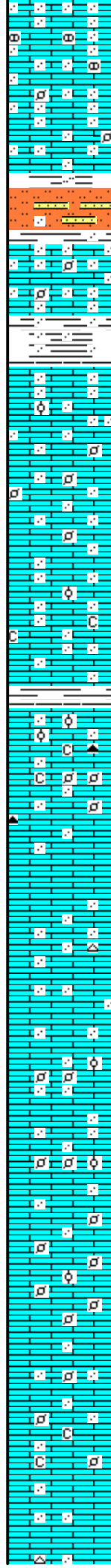
conn

Vis 59
Wt. 9.0
LCM 6#

A.V.= 135.15

6100

conn



ST. GENEVIEVE 5921(-3626)

LM; lt gy, pale gy grn, sandy, interbdd hd grn sandy
lmst, no vis por, no fluor, interbdd grn to gy grn
nodular lmst, ns.

LM; off wh, wh, sandy w/scat small rnd carb pellets, f gr
qtz embdd in dense mtx, no vis por, v. dull yel to no
fluor, no stn, ns.

SLTST; grn, sandy ip, trc grn vf gr qtz argil ss, no clean
ss.

LM; off wh, wh, lt to med gy, v. sandy w/vf to f gr qtz in
dense lmst mtx, no vis por, no fluor, ns.

SH; varic, platy, sandy ip.

LM; off wh, lt gy, sandy to occ finely pelletal, trc small
oolites in dense mtx, no vis por, no stn, ns.

LM; off wh, wh, lt gy, sandy ip, scat small pellets and
ooids, minor chalky mtx, no fluor, no stn, ns.

SH; grn, gy grn, platy, smooth

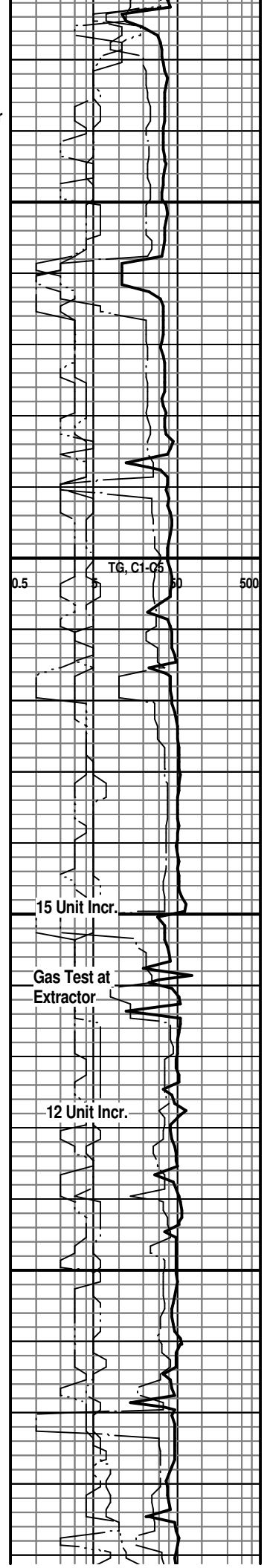
ST. LOUIS 6021(-3726)

LM; tan to buff, off wh, sandy w/vf gr qtz in dense mtx,
trc opaque to org cht, well cem, no vis por, no fluor, no
stn or odor, ns.

LM; tan to lt brn, sandy to finely pelletal, abnt vf to f gr
qtz in mtx, rare small to med size oolites/pellets - well
cem, scat dull yel min fluor, no stn or odor, ns.

LM; off wh, lt gy, tan, sandy w/interbdd rnd small carb
pellets, minor chalky mtx, scat dull yel fluor, no stn or
odor, ns.

LM; wh, off wh, oolitic, med size oolites, weakly cem,
fair interpart por, much soft chalky mtx, v. dull yel min
fluor, no stn or odor, no gas kick, ns.



TG, C1-C6

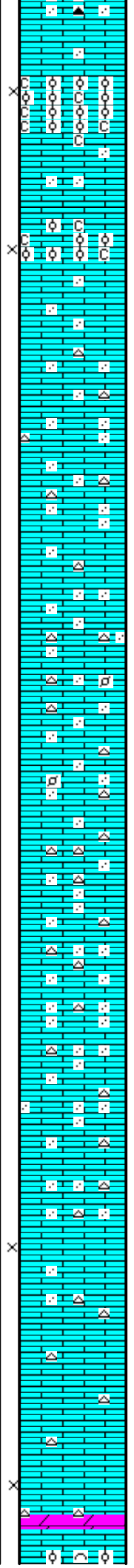
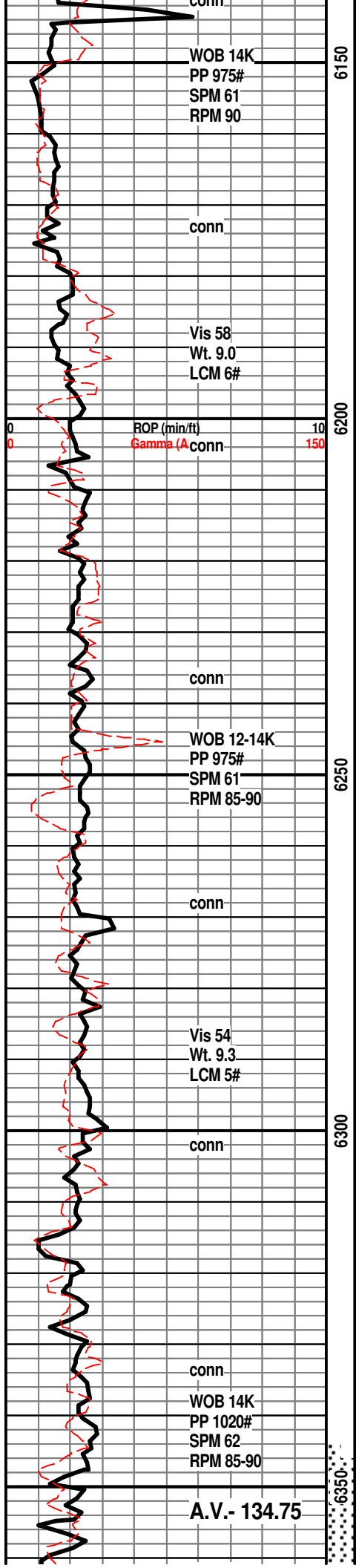
0.5

500

15 Unit Incr.

Gas Test at
Extractor

12 Unit Incr.



fluor, no stn or odor, no gas kick, ns.

LM; tan to lt brn, oolitic, most w/med size oolites, partly chalky mtx, fair interpart por, no fluor, no stn or odor, no cut, no sample shows

LM; tan to lt brn, most sandy w/vf to f gr qtz in mtx, well cem, no vis por, interbdd opaque to lt gy cht, no fluor, ns.

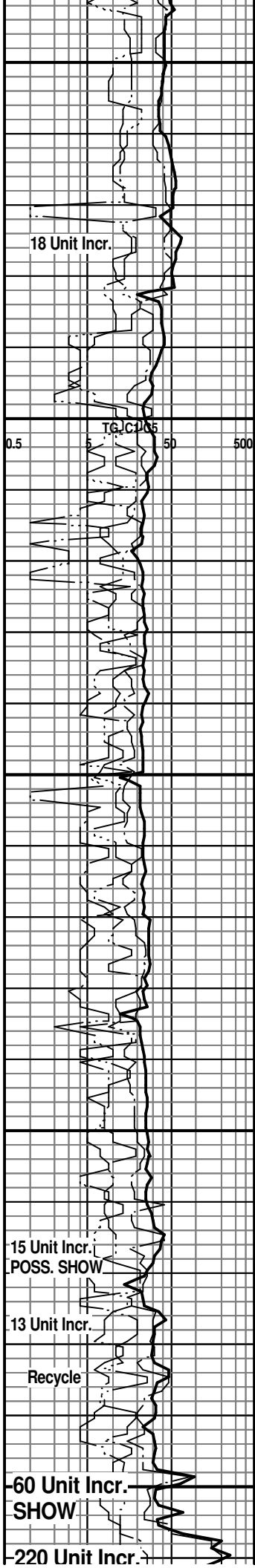
LM; tan to lt brn, most dense, sandy w/rare small rnd carb pellets, interbdd lt gy to opaque fresh cht, no vis por, ns.

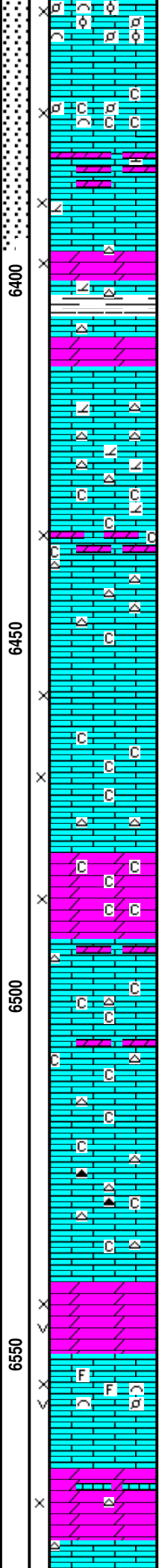
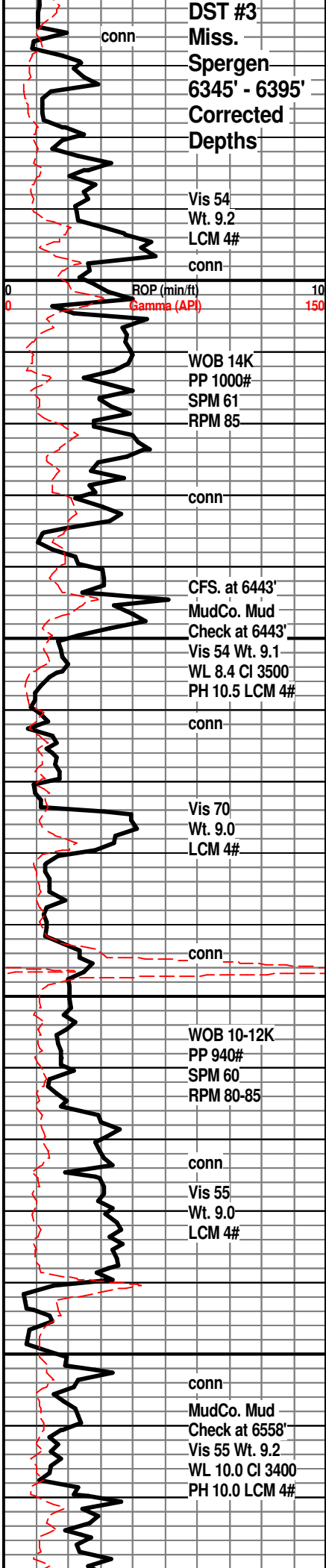
LM; lt brn, occ med brn, sandy throughout, most dense, blocky, no vis por, scat lt gy to off wh cht, tite

LM; tan to lt gy, sucrosic, poor to fair interxln por, v. dull yel fluor, no stn or odor, no vis gas bubbles, ns.

LM; lt to med brn, most micritic, dense, scat tan to off wh cht, no vis por, ns.

MISS. SPERGEN 6354(-4059)
DOL; lt gy, sucrosic, lmy ip, fair interxln por, dull yel fluor, poss gas bubbles, no cut, no odor





LM; lt brn, highly foss, many pellets, ooids and scat hash, gd interpart por, lt yel fluor, sev. gas bubbles, v. faint gas odor, no cut - gas show only

LM; lt brn, foss/partly dolomitic, some v. chalky soft, dull to lt yel fluor, fair to gd interpart por, trc gas bubbles no vis stn, no cut, no odor

LM; tan, cream, dolomitic ip, fair interxln por, lt to rarely med yel fluor, no odor, poss gas bubbles, no cut

DST #3: Miss. Spergen 6345' - 6395'(Straddle Test) Corrected Depths to LOG

LM; lt brn, tan, f/xln w/scat sucrosic text, interbdd dolo and dolomitic lmst, cherty w/gy and opaque cht, scat lt yel fluor, no vis stn, poor to no vis por, ns.

LM; tan to off wh, med xln to sucrosic text, chalky ip, partly dolomitic, fair interxln por, lt yel fluor, no stn or odor, no gas kick, ns.

LM; lt brn, gy brn, off wh, med xln w/scat chalky mtx, partly dolomitic, fairly soft, poor to fair interxln por, no fluor, ns.

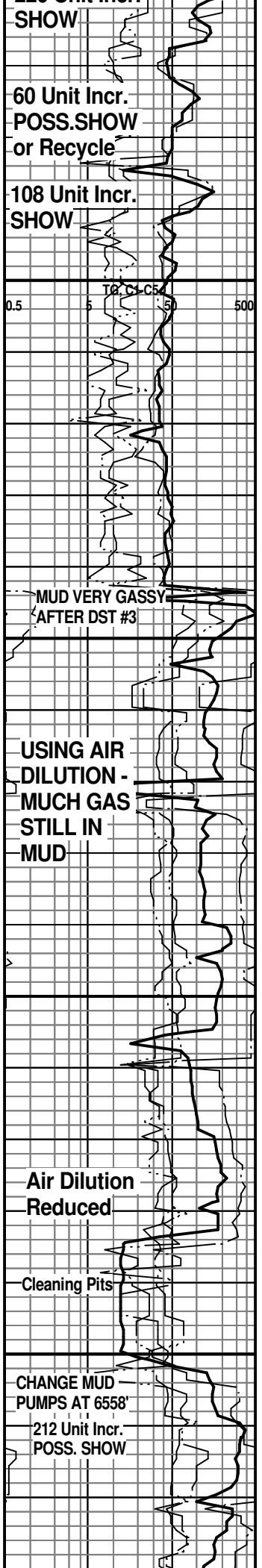
DOL; tan to off wh, lt brn, f to med xln w/much chalk and chalky mtx, partly dolomitic, poor to fair interxln por, interbdd wh to off wh cht, dull yel fluor, no vis stn, no odor, ns.

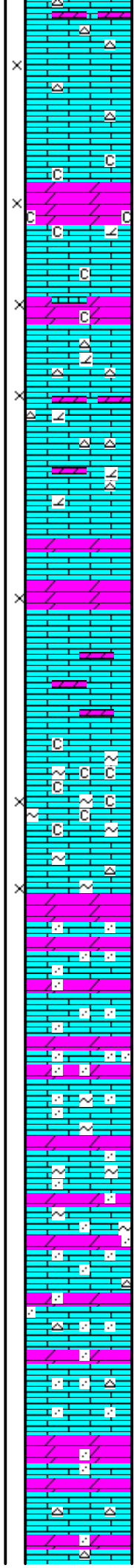
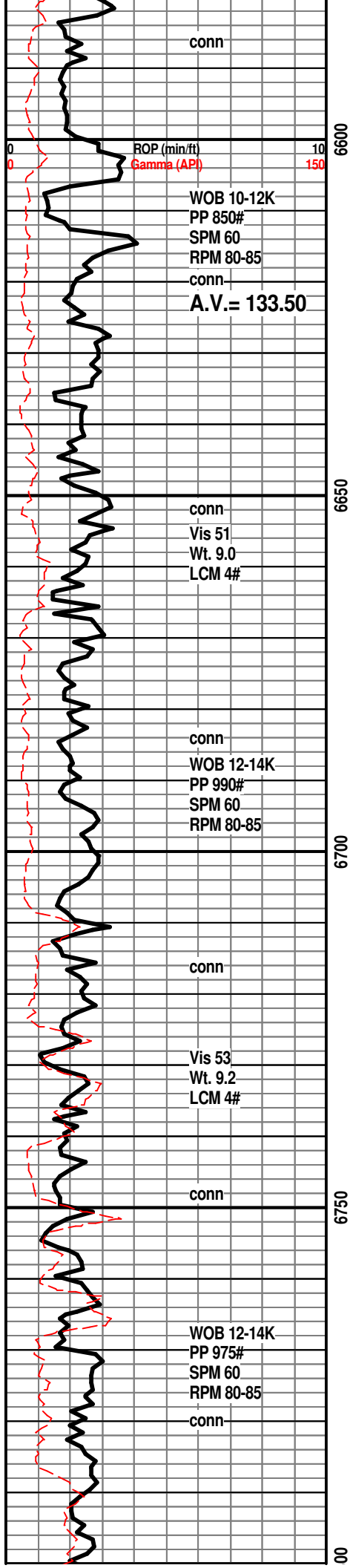
LM; tan to buff, off wh, med xln w/chalky mtx, scat wh to amber/specked chert, no vis por, v. dull yel min fluor, no stn or odor, ns.

DOL; lt brn, sucrosic, soft, gd interxln por, dull yel fluor, occ vug por, questionable gas bubbles, no odor, no oil stn, no cut

LM; off wh, foss, fair interpart and vug por, lt yel fluor, no vis stn, no odor

DOL; lt gy, lt brn, sucrosic, fair to gd interxln por, strks of dolomitic lmst, dull yel fluor, no stn or odor, no vis gas bubbles, no sample shows





LM; tan to lt brn with gy strks, interbdd dolomitic lmst, dull yel to no fluor, scat off wh to gy cht, poor to fair interxln por, no stn or odor, ns.

DOL; off wh, wh, tan, med xln w/much chalk and chalky mtz, fair interxln por, some v. soft, interbdd dolomitic lmst, dull yel fluor, no stn, ns.

LM; off wh, buff, tan, rarely lt gy, dolomitic, interbdd sucrosic dolomite, cherty ip, poor to fair interxln por, scat lt gy to off wh cht, dull yel/wh min fluor, no stn or odor, ns.

DOL& LM; off wh to lt gy, sucrosic, firm, limy, interbdd dolomitic lmst, most tite w/poor intergran por, lt to med yel min fluor, no stn or odor, ns.

LMY DOLO; off wh, lt gy, med xln w/interbdd sucrosic dolomitic lmst, some soft w/poor interxln por, lt to med yel min fluor, no stn or odor, ns.

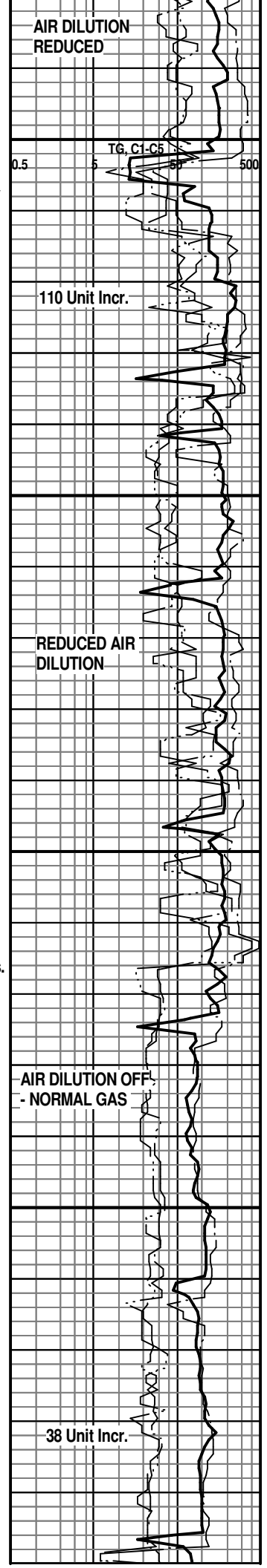
LM; off wh/wh, lt gy, med xln, abnt soft chalk and chalky mtz, partly dolomitic, scat grn clay(glau?) inclusions, poor to fair interxln por, dull to lt yel fluor, ns.

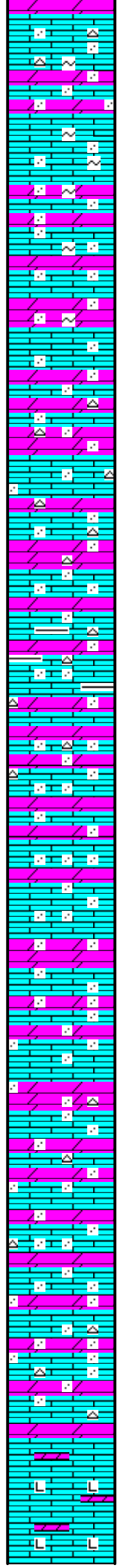
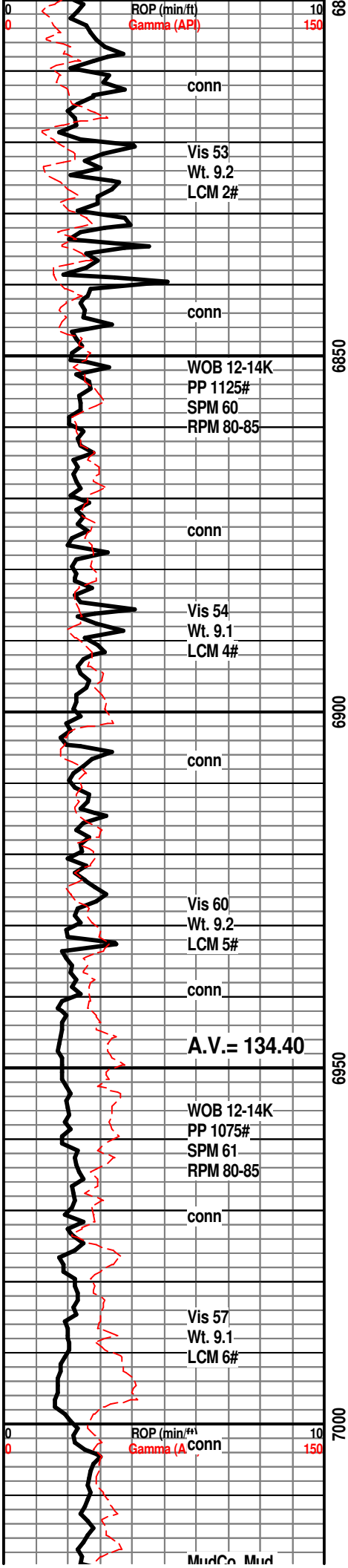
LMY DOLO; med gy, hd, gritty text, most dense, scat opaque spar calc xtals, dull yel min fluor, no vis por, ns.

LM; med gy, rare lt gy, most dense, interbdd dolo. lmst w/abnt grn glau clay inclusions, no vis por, dull to occ lt yel min fluor, ns.

MISS. COWLEY 6788(-4493)

LMY DOLO; med gy brn, gritty, interbdd dolo. lmst, cherty ip, dense, dull to lt yel min fluor, ns.





LMY DOLO; med gy, occ dk gy, rare gy brn, gritty text, interbdd med xln lmy dolo. w/scat grn glau inclusions, dull yel min fluor, ns.

LMY DOLO; med gy, rare lt gy, hd, gritty text, no vis por, rare grn glau inclusions, dull to occ lt yel fluor, ns.

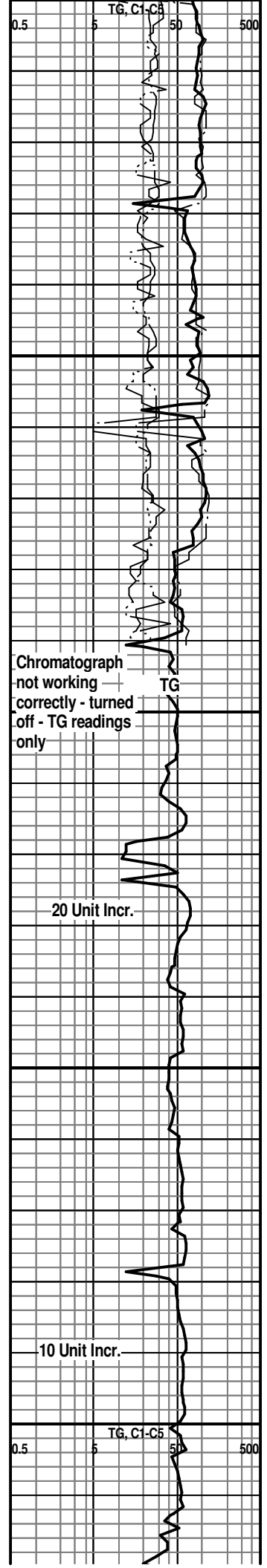
LMY DOLO; med gy brn to dk gy, gritty, interbdd dolo. Imst - some argil, hd, blocky, rare off wh cht, tite

LMY DOLO; med to dk gy brn, dk brn, gritty text, interbdd hd dolo. Imst, scat lt gy cht, dull yel min fluor, no stn or odor, ns.

LMY DOLO; med to dk gy, gy brn, gritty text, interbdd dolo. Imst, dense, no vis por, dull yel min fluor, no stn or odor, no gas kick

LMY DOLO; med to dk brn, occ gy brn, dense, gritty, occ tan to brn cht, no fluor, no vis por, ns.

LM; med to dk brn, hd, blocky, less sandy to gritty text, decr. dolomitic content, dense, some nealy litho, no vis por. no fluor. ns.



Induc. Mud
Check at 7023'
Vis 65 Wt. 9.1
WL 9.2 CI 2700
PH 9.5 LCM 4#
conn
WOB 10-12K
PP 1075#
SPM 61
RPM 80-85

Vis 60
Wt. 9.2
LCM 4#
CFS. at 7069'

WOB 12K
PP 1100#
SPM 61
RPM 80-85

conn

Vis 60
Wt. 9.1
LCM 4#
conn

CFS. at 7155'

conn

WOB 12-14K
PP 1050#
SPM 60
RPM 80

conn

ROP (min/ft) 10
Gamma (A) Vis 59 150
Wt. 9.1
LCM 4#

conn

7050

7100

7150

7200



LM; med to dk brn, dolomitic, some gritty text, blocky, hd, no vis por, trc lt brn dolomite, no stn or odor, no gas kick, ns.

LM; med to dk brn, gy brn, rarely to not dolomitic, argil w/interbdd shaly lmst, rarely pyr, no vis por, no fluor, ns.

SH; yel, grn, maroon, platy to flakey

VIOLA 7112(-4817)

LM; lt gy, gy grn, gritty ip, most dense, interbdd tan/lt gy dolomite w/glau incl, dull yel to no fluor, no vis por, ns.

LM; tan to lt gy/grn, hd, partly dolomitic, most dense, no vis por, scat dove gy cht, no fluor, ns.

SH; med to dk gy, v. firm, dolomite and lmst. sloughing, some v. lmy

SH; varic to dk gy, lmy, platy, hd

DOL; lt to med gy, sucrosic, glau ip, firm, poor to fair interxln por, no fluor, no stn, ns.

LM; tan to buff, lt brn, med xln ip, partly dolomitic, scat chalky mtx, interbdd lt to dove gy cht, dull yel min fluor, no stn, ns.

LM; off wh, tan, wh, f to med xln, partly dolomitic, much soft chalky mtx, abnt opaque/off wh and dove gy cht, dull yel min fluor, poor interxln por, no stn or odor, no gas kick, ns.

DOL; med brn, sucrosic, fair interxln por, lt vel min

TG

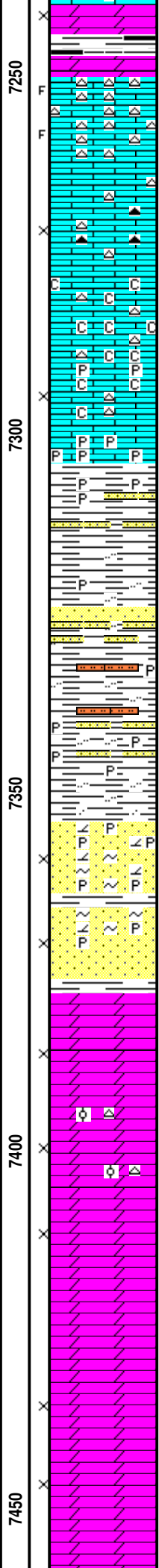
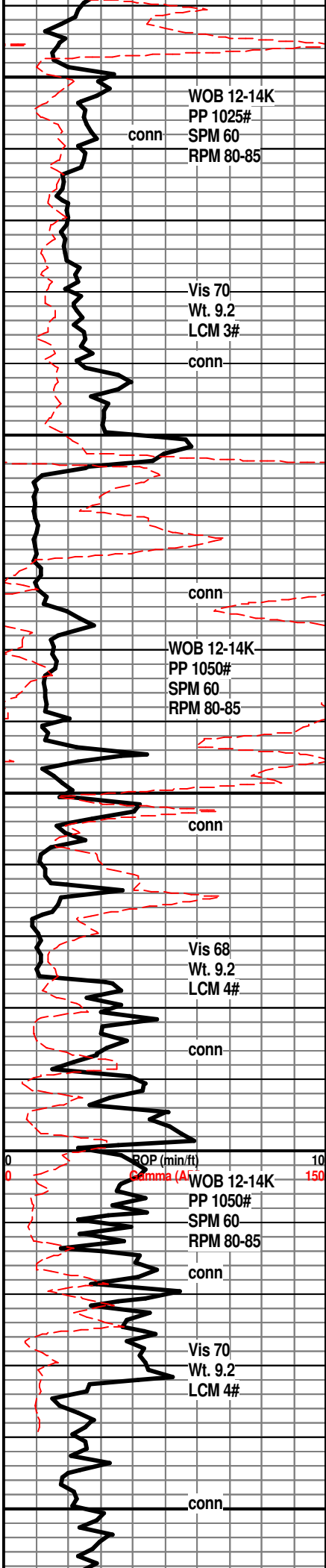
Chromatograph working again.

TG, 21-C

0.5

50

500



fluor, soft ip, no stn or odor, ns.
SH; dk gy, trc blk, platy

LM; off wh, wh, tan, med xln w/abnt wh/off wh fresh cht, some fracs vis, no stn or odor, no gas kick, ns.

LM; med brn, occ dk brn, sucrosic, firm, poor to fair interxln por, scat gy to dk brn cht, dull to occ lt yel min fluor, no stn or odor, ns.

LM; wh, off wh, f to med xln, chalky, strngs of hd pyr, poor to fair interxln por, cherty ip, dull yel min fluor, no stn or odor, ns.

SIMPSON SHALE 7304(-5009)
SH; grn, sea grn, some turquoise grn, pyr ip, interbdd sltst and vf gr qtz ss, platy, no clean ss dev., no fluor, ns.

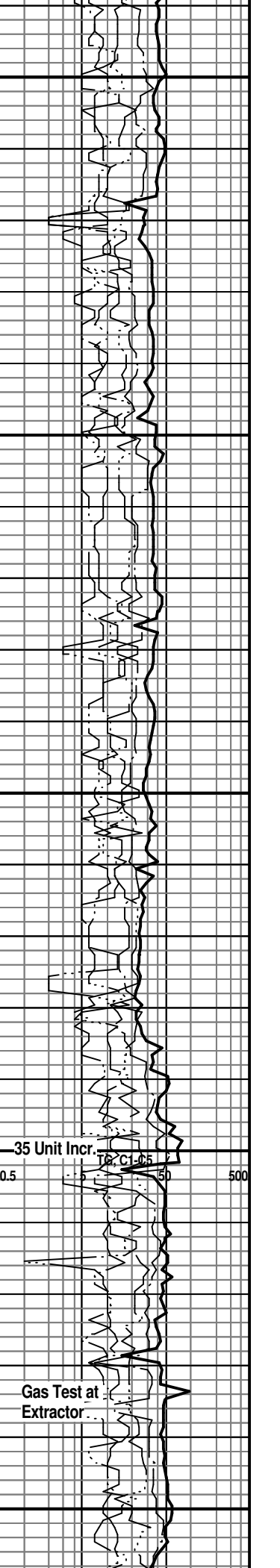
SH; sea grn, some turquoise grn, silty to sandy w/strngs of vf to f gr qtz ss, pyr ip, platy

SIMPSON SAND 7354(-5059)
SS; lt gy, clr, brn, partly dolomitic, most med gr qtz, subrnd to subang, clusters, pyr ip, some "salt and pepper" gr w/dk gy/blk and grn clay incl, fair intergran por, no fluor, no stn/odor, ns.
SS; clr, lt gy, most med gr qtz, rnd to subrnd gr, fair to gd intergran por, cleaner ss at base, no fluor, no stn, no gas kick, ns.

ARBUCKLE 7378(-5083)
DOL; tan to cream, buff, finely rhombic, compact w/poor interxln por, med yel min fluor, no stn or odor, no gas kick, ns.

DOL; tan to buff, sucrosic, lmy ip, fairly tight, med yel min fluor, few pcs of wh oolitic cht, poor to no vis por, no stn or odor, ns.

DOL; tan to buff, lt brn, sucrosic to occ finely rhombic, med to occ brite yel min fluor, poor to fair interxln por, ns.



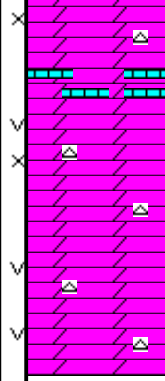
WOB 14-15K
PP 1000#
SPM 58-60
RPM 80-85

MudCo. Mud
Check at 7489'
Vis 70 Wt. 9.2
WL 9.2 Cl 2000 PH
9.0 LCM 4.5#

CFS. at' RTD.

7500

7550



DOL; tan, off wh, lt brn, sucrosic to finely rhombic, fair to occ gd interxln w/scat vug por, med yel min fluor, occ wh cht, some lmy hd dolomite, no stn or odor, no gas kick, ns.

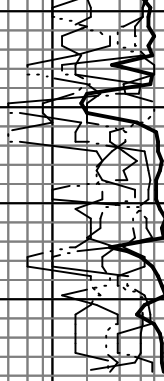
DOL; tan to buff, lt brn, f to med rhombic, scat fair vug por, rare off wh to wh cht, med yel min fluor, no stn or odor, no gas kick, ns,

RTD. 7500' at 9:50 AM. 8/17/13

LTD. 7500'

Halliburton DIL, NEU/DEN w/PE,
Microlog, Sonic

NOTE: This log was shifted upward by
2' to 4' for correlation purposes with the
Halliburton Logs.





DRILL STEM TEST REPORT

Prepared For: **Herman L. Loeb LLC**

PO Box 838
Lawrenceville IL 62439

ATTN: Jon Christensen

Coolhand #1-26

26-33s-26w Meade KS

Start Date: 2013.08.09 @ 22:42:21

End Date: 2013.08.10 @ 08:49:51

Job Ticket #: 52292 DST #: 1

Trilobite Testing, Inc

PO Box 362 Hays, KS 67601

ph: 785-625-4778 fax: 785-625-5620

Printed: 2013.08.19 @ 14:46:35



TRILOBITE TESTING, INC.

DRILL STEM TEST REPORT

Herman L. Loeb LLC
 PO Box 838
 Lawrenceville IL 62439
 ATTN: Jon Christensen

26-33s-26w Meade KS
Coolhand #1-26
 Job Ticket: 52292 **DST#: 1**
 Test Start: 2013.08.09 @ 22:42:21

GENERAL INFORMATION:

Formation: **Pawnee**
 Deviated: No Whipstock: ft (KB)
 Time Tool Opened: 02:22:06
 Time Test Ended: 08:49:51
 Interval: **5288.00 ft (KB) To 5321.00 ft (KB) (TVD)**
 Total Depth: 5321.00 ft (KB) (TVD)
 Hole Diameter: 7.88 inches Hole Condition: Fair
 Test Type: Conventional Bottom Hole (Initial)
 Tester: Gary Pevoteaux
 Unit No: 56
 Reference Elevations: 2295.00 ft (KB)
 2284.00 ft (CF)
 KB to GR/CF: 11.00 ft

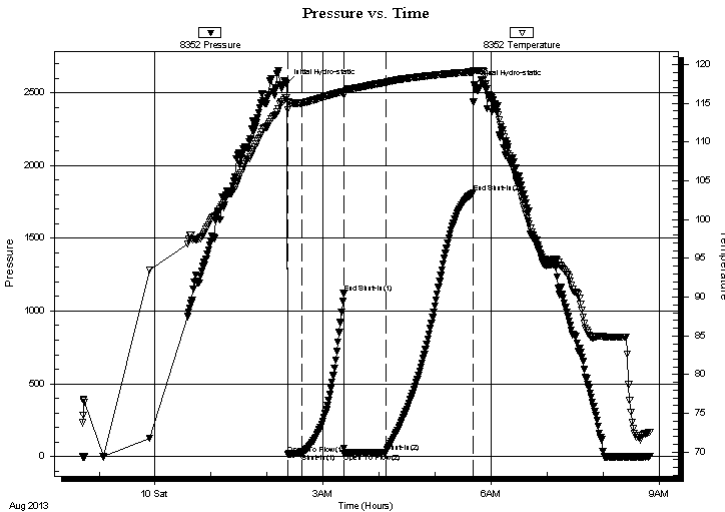
Serial #: 8352

Inside

Press @ Run Depth: 31.96 psig @ 5289.00 ft (KB) Capacity: 8000.00 psig
 Start Date: 2013.08.09 End Date: 2013.08.10 Last Calib.: 2013.08.10
 Start Time: 22:42:26 End Time: 08:49:51 Time On Btm: 2013.08.10 @ 02:20:51
 Time Off Btm: 2013.08.10 @ 05:41:36

TEST COMMENT: IF: Weak blow . 1/4 - 1/2".
 IS: No blow .
 FF: Strong blow . B.O.B. in 13 mins.
 FS: No blow .

PRESSURE SUMMARY



Time (Min.)	Pressure (psig)	Temp (deg F)	Annotation
0	2563.83	115.75	Initial Hydro-static
2	17.93	114.20	Open To Flow (1)
16	20.53	115.06	Shut-In(1)
61	1121.39	116.52	End Shut-In(1)
62	21.11	116.20	Open To Flow (2)
107	31.96	117.70	Shut-In(2)
200	1810.05	119.06	End Shut-In(2)
201	2557.29	119.25	Final Hydro-static

Recovery

Length (ft)	Description	Volume (bbl)
35.00	GOCM 6%g 6%o 88%m	0.17
0.00	465 ft.of GIP	0.00

Gas Rates

Choke (inches)	Pressure (psig)	Gas Rate (Mcf/d)



**TRILOBITE
TESTING, INC.**

DRILL STEM TEST REPORT

TOOL DIAGRAM

Herman L. Loeb LLC
 PO Box 838
 Lawrenceville IL 62439
 ATTN: Jon Christensen

26-33s-26w Meade KS
Coolhand #1-26
 Job Ticket: 52292 **DST#: 1**
 Test Start: 2013.08.09 @ 22:42:21

Tool Information

Drill Pipe:	Length: 5068.00 ft	Diameter: 3.80 inches	Volume: 71.09 bbl	Tool Weight:	2400.00 lb
Heavy Wt. Pipe:	Length: 0.00 ft	Diameter: 0.00 inches	Volume: 0.00 bbl	Weight set on Packer:	24000.00 lb
Drill Collar:	Length: 210.00 ft	Diameter: 2.25 inches	Volume: 1.03 bbl	Weight to Pull Loose:	93000.00 lb
			<u>Total Volume: 72.12 bbl</u>	Tool Chased	0.00 ft
Drill Pipe Above KB:	18.00 ft			String Weight: Initial	83000.00 lb
Depth to Top Packer:	5288.00 ft			Final	83000.00 lb
Depth to Bottom Packer:	ft				
Interval between Packers:	33.00 ft				
Tool Length:	61.00 ft				
Number of Packers:	2	Diameter: 6.75 inches			

Tool Comments:

Tool Description	Length (ft)	Serial No.	Position	Depth (ft)	Accum. Lengths
-------------------------	--------------------	-------------------	-----------------	-------------------	-----------------------

C.O. Sub	1.00			5261.00	
Shut in tool	5.00			5266.00	
HMV	5.00			5271.00	
Jars	5.00			5276.00	
Safety Joint	3.00			5279.00	
Packer	4.00			5283.00	28.00 Bottom Of Top Packer
Packer	5.00			5288.00	
Stubb	1.00			5289.00	
Recorder	0.00	8352	Inside	5289.00	
Recorder	0.00	8370	Outside	5289.00	
Perforations	27.00			5316.00	
Bullnose	5.00			5321.00	33.00 Bottom Packers & Anchor

Total Tool Length: 61.00



**TRILOBITE
TESTING, INC.**

DRILL STEM TEST REPORT

FLUID SUMMARY

Herman L. Loeb LLC

26-33s-26w Meade KS

PO Box 838
Lawrenceville IL 62439

Coolhand #1-26

Job Ticket: 52292

DST#: 1

ATTN: Jon Christensen

Test Start: 2013.08.09 @ 22:42:21

Mud and Cushion Information

Mud Type: Gel Chem

Cushion Type:

Oil API:

deg API

Mud Weight: 9.00 lb/gal

Cushion Length:

ft

Water Salinity:

4000 ppm

Viscosity: 52.00 sec/qt

Cushion Volume:

bbbl

Water Loss: 8.37 in³

Gas Cushion Type:

Resistivity: 0.00 ohm.m

Gas Cushion Pressure:

psig

Salinity: 4000.00 ppm

Filter Cake: 0.20 inches

Recovery Information

Recovery Table

Length ft	Description	Volume bbbl
35.00	GOCM 6%g 6%o 88%m	0.172
0.00	465 ft.of GIP	0.000

Total Length: 35.00 ft Total Volume: 0.172 bbl

Num Fluid Samples: 0

Num Gas Bombs: 0

Serial #: none

Laboratory Name:

Laboratory Location:

Recovery Comments:

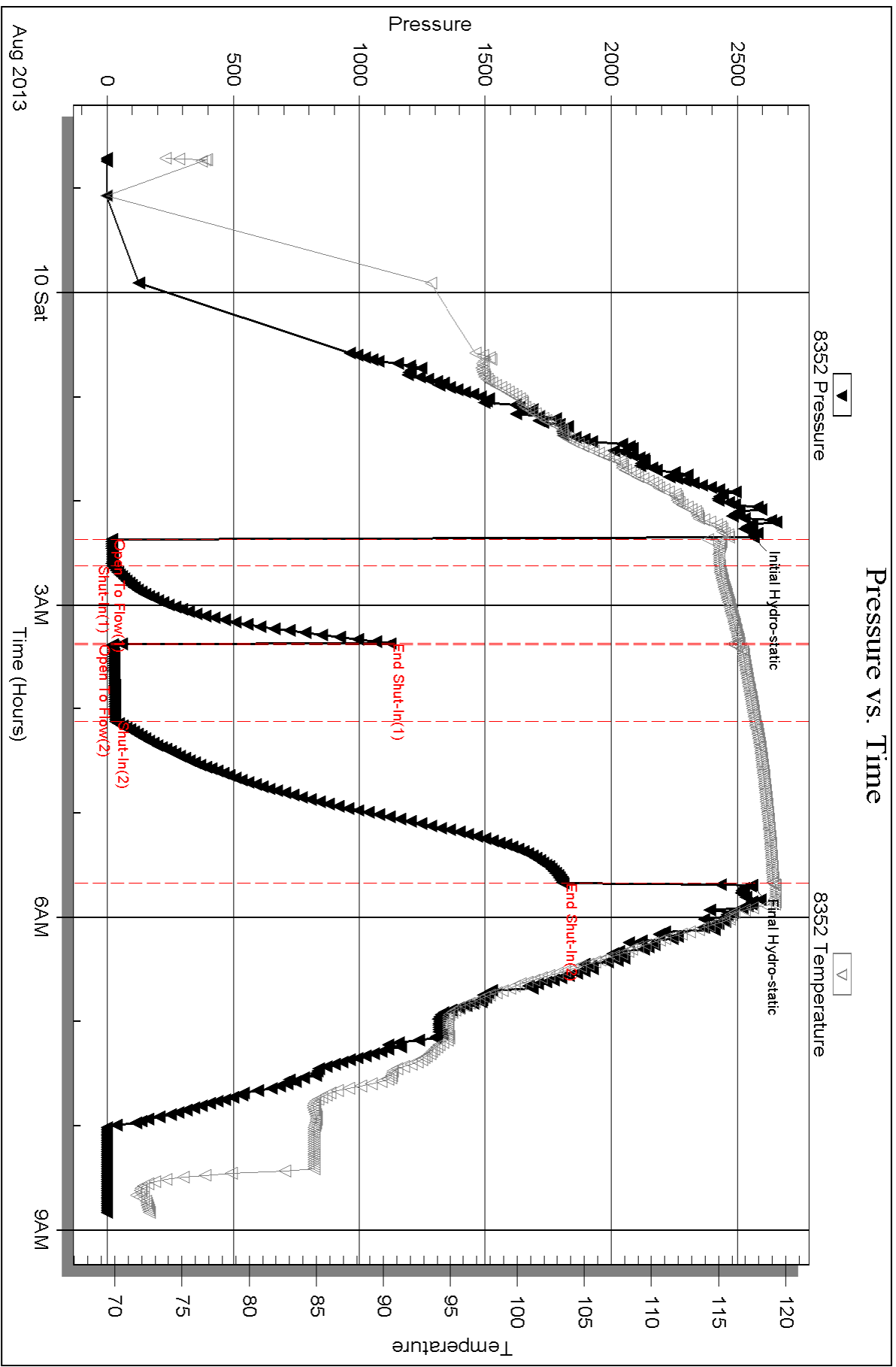
Serial #: 8352

Inside

Herrman L. Loeb LLC

Coolhand #1-26

DST Test Number: 1

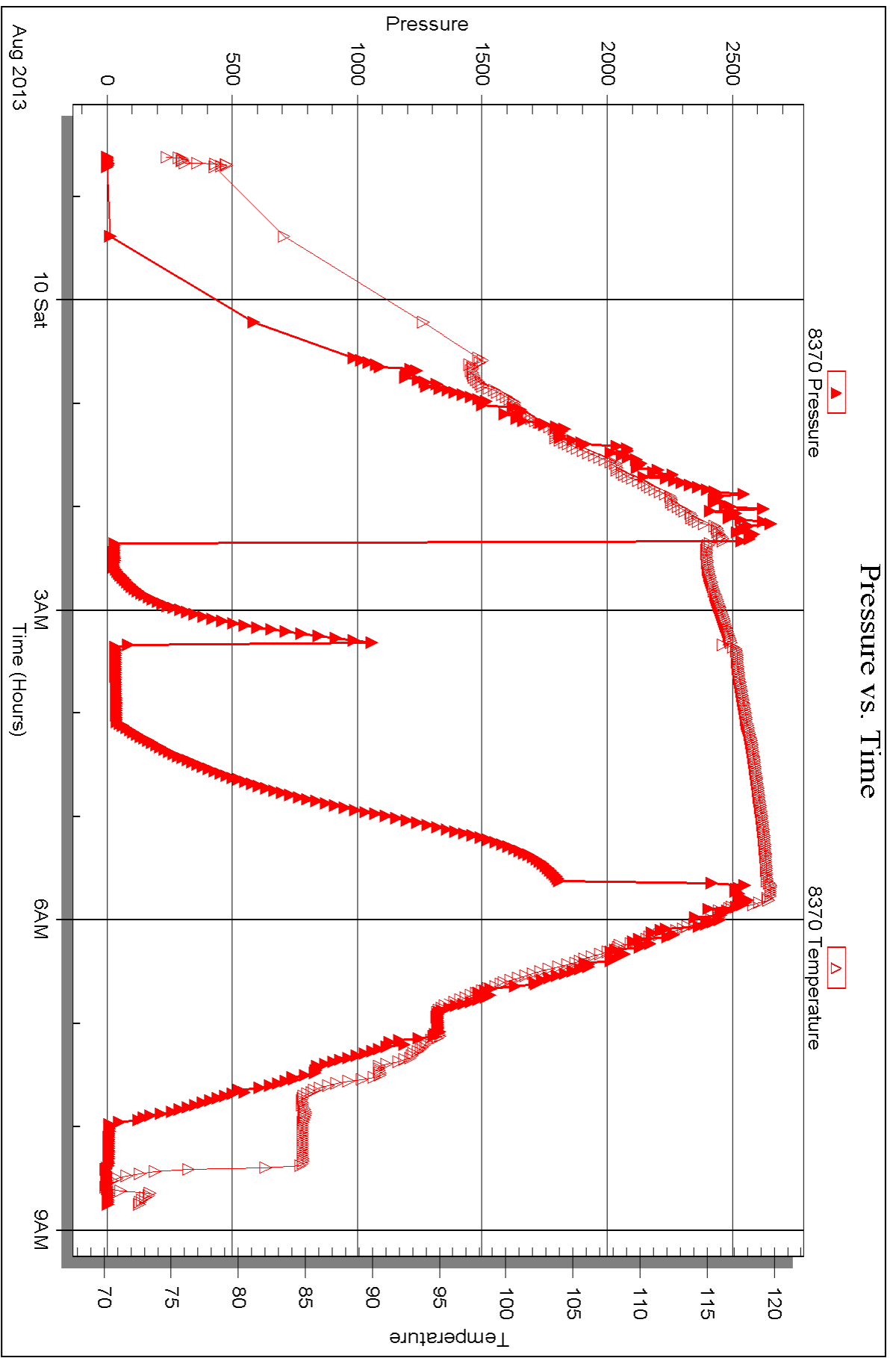


Serial #: 8370

Outside Herrman L. Loeb LLC

Coolhand #1-26

DST Test Number: 1





DRILL STEM TEST REPORT

Prepared For: **Herman L. Loeb LLC**

PO Box 838
Lawrenceville IL 62439

ATTN: Jon Christensen

Coolhand #1-26

26-33s-26w Meade KS

Start Date: 2013.08.12 @ 14:51:35

End Date: 2013.08.13 @ 01:00:35

Job Ticket #: 52293 DST #: 2

Trilobite Testing, Inc

PO Box 362 Hays, KS 67601

ph: 785-625-4778 fax: 785-625-5620

Printed: 2013.08.19 @ 14:45:48



TRILOBITE TESTING, INC.

DRILL STEM TEST REPORT

Herman L. Loeb LLC
 PO Box 838
 Lawrenceville IL 62439
 ATTN: Jon Christensen

26-33s-26w Meade KS
Coolhand #1-26
 Job Ticket: 52293 **DST#: 2**
 Test Start: 2013.08.12 @ 14:51:35

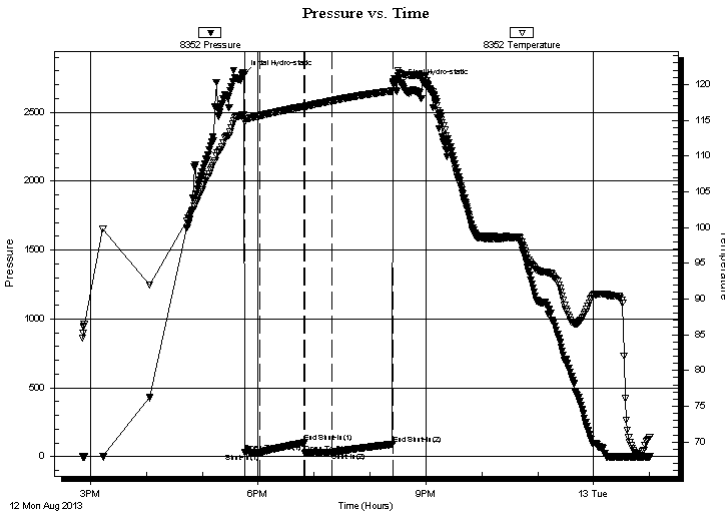
GENERAL INFORMATION:

Formation: **Chester**
 Deviated: No Whipstock: ft (KB)
 Time Tool Opened: 17:46:05
 Time Test Ended: 01:00:35
 Interval: **5687.00 ft (KB) To 5740.00 ft (KB) (TVD)**
 Total Depth: 5740.00 ft (KB) (TVD)
 Hole Diameter: 7.88 inches Hole Condition: Poor
 Test Type: Conventional Bottom Hole (Reset)
 Tester: Gary Pevoteaux
 Unit No: 56
 Reference Elevations: 2295.00 ft (KB)
 2284.00 ft (CF)
 KB to GR/CF: 11.00 ft

Serial #: 8352 Inside
 Press @ Run Depth: 30.73 psig @ 5688.00 ft (KB) Capacity: 8000.00 psig
 Start Date: 2013.08.12 End Date: 2013.08.13 Last Calib.: 2013.08.13
 Start Time: 14:51:40 End Time: 01:00:35 Time On Btm: 2013.08.12 @ 17:44:35
 Time Off Btm: 2013.08.12 @ 20:33:20

TEST COMMENT: IF:Weak blow . Slow increase to 1 1/2".
 IS:No blow .
 FF:Weak blow . 1 1/2 - 2".
 FS:No blow .

PRESSURE SUMMARY



Time (Min.)	Pressure (psig)	Temp (deg F)	Annotation
0	2775.99	115.81	Initial Hydro-static
2	31.01	114.83	Open To Flow (1)
17	27.29	115.60	Shut-In(1)
65	101.22	116.94	End Shut-In(1)
66	26.92	116.90	Open To Flow (2)
95	30.73	117.70	Shut-In(2)
160	90.03	119.10	End Shut-In(2)
169	2705.05	121.41	Final Hydro-static

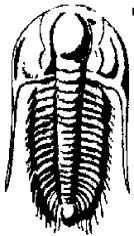
Recovery

Length (ft)	Description	Volume (bbl)
25.00	Drig.Mud	0.12
0.00	35 ft.of GIP	0.00

* Recovery from multiple tests

Gas Rates

Choke (inches)	Pressure (psig)	Gas Rate (Mcf/d)



TRILOBITE TESTING, INC.

DRILL STEM TEST REPORT

Herman L. Loeb LLC
 PO Box 838
 Lawrenceville IL 62439
 ATTN: Jon Christensen

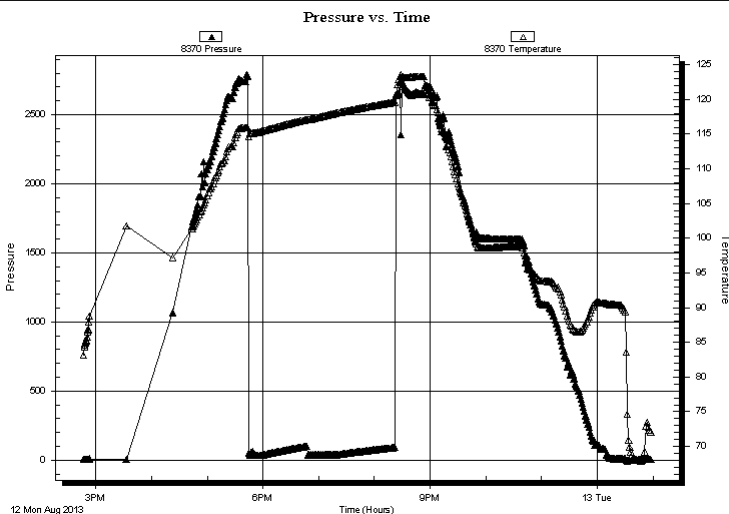
26-33s-26w Meade KS
Coolhand #1-26
 Job Ticket: 52293 **DST#: 2**
 Test Start: 2013.08.12 @ 14:51:35

GENERAL INFORMATION:

Formation: Chester		Test Type: Conventional Bottom Hole (Reset)
Deviated: No Whipstock:	ft (KB)	Tester: Gary Pevoteaux
Time Tool Opened: 17:46:05		Unit No: 56
Time Test Ended: 01:00:35		
Interval: 5687.00 ft (KB) To 5740.00 ft (KB) (TVD)		Reference Elevations: 2295.00 ft (KB)
Total Depth: 5740.00 ft (KB) (TVD)		2284.00 ft (CF)
Hole Diameter: 7.88 inches	Hole Condition: Poor	KB to GR/CF: 11.00 ft

Serial #: 8370	Outside				
Press @ Run Depth: psig @	5688.00 ft (KB)	Capacity:	8000.00 psig		
Start Date: 2013.08.12	End Date: 2013.08.13	Last Calib.:	2013.08.13		
Start Time: 14:46:58	End Time: 00:57:23	Time On Btm:			
		Time Off Btm:			

TEST COMMENT: IF:Weak blow . Slow increase to 1 1/2".
 IS:No blow .
 FF:Weak blow . 1 1/2 - 2".
 FS:No blow .



PRESSURE SUMMARY

Time (Min.)	Pressure (psig)	Temp (deg F)	Annotation

Recovery

Length (ft)	Description	Volume (bbl)
25.00	Drig.Mud	0.12
0.00	35 ft.of GIP	0.00

* Recovery from multiple tests

Gas Rates

	Choke (inches)	Pressure (psig)	Gas Rate (Mcf/d)



**TRILOBITE
TESTING, INC.**

DRILL STEM TEST REPORT

TOOL DIAGRAM

Herman L. Loeb LLC

26-33s-26w Meade KS

PO Box 838
Lawrenceville IL 62439

Coolhand #1-26

Job Ticket: 52293

DST#: 2

ATTN: Jon Christensen

Test Start: 2013.08.12 @ 14:51:35

Tool Information

Drill Pipe:	Length: 5481.00 ft	Diameter: 3.80 inches	Volume: 76.88 bbl	Tool Weight: 2400.00 lb
Heavy Wt. Pipe:	Length: 0.00 ft	Diameter: 0.00 inches	Volume: 0.00 bbl	Weight set on Packer: 24000.00 lb
Drill Collar:	Length: 210.00 ft	Diameter: 2.25 inches	Volume: 1.03 bbl	Weight to Pull Loose: 142000.0 lb
			<u>Total Volume: 77.91 bbl</u>	Tool Chased 0.00 ft
Drill Pipe Above KB:	32.00 ft			String Weight: Initial 90000.00 lb
Depth to Top Packer:	5687.00 ft			Final 90500.00 lb
Depth to Bottom Packer:	ft			
Interval between Packers:	53.00 ft			
Tool Length:	81.00 ft			
Number of Packers:	2	Diameter: 6.75 inches		

Tool Comments:

Tool Description	Length (ft)	Serial No.	Position	Depth (ft)	Accum. Lengths
------------------	-------------	------------	----------	------------	----------------

C.O. Sub	1.00			5660.00	
Shut in tool	5.00			5665.00	
HMV	5.00			5670.00	
Jars	5.00			5675.00	
Safety Joint	3.00			5678.00	
Packer	4.00			5682.00	28.00 Bottom Of Top Packer
Packer	5.00			5687.00	
Stubb	1.00			5688.00	
Recorder	0.00	8352	Inside	5688.00	
Recorder	0.00	8370	Outside	5688.00	
Perforations	3.00			5691.00	
Blank Spacing	32.00			5723.00	
Perforations	12.00			5735.00	
Bullnose	5.00			5740.00	53.00 Bottom Packers & Anchor

Total Tool Length: 81.00



**TRILOBITE
TESTING, INC.**

DRILL STEM TEST REPORT

FLUID SUMMARY

Herman L. Loeb LLC

26-33s-26w Meade KS

PO Box 838
Lawrenceville IL 62439

Coolhand #1-26

Job Ticket: 52293

DST#: 2

ATTN: Jon Christensen

Test Start: 2013.08.12 @ 14:51:35

Mud and Cushion Information

Mud Type: Gel Chem

Cushion Type:

Oil API:

deg API

Mud Weight: 9.00 lb/gal

Cushion Length:

ft

Water Salinity:

4000 ppm

Viscosity: 51.00 sec/qt

Cushion Volume:

bbbl

Water Loss: 7.98 in³

Gas Cushion Type:

Resistivity: 0.00 ohm.m

Gas Cushion Pressure:

psig

Salinity: 4000.00 ppm

Filter Cake: 0.20 inches

Recovery Information

Recovery Table

Length ft	Description	Volume bbbl
25.00	Drig.Mud	0.123
0.00	35 ft.of GIP	0.000

Total Length: 25.00 ft Total Volume: 0.123 bbl

Num Fluid Samples: 0

Num Gas Bombs: 0

Serial #: none

Laboratory Name:

Laboratory Location:

Recovery Comments:

Serial #: 8352

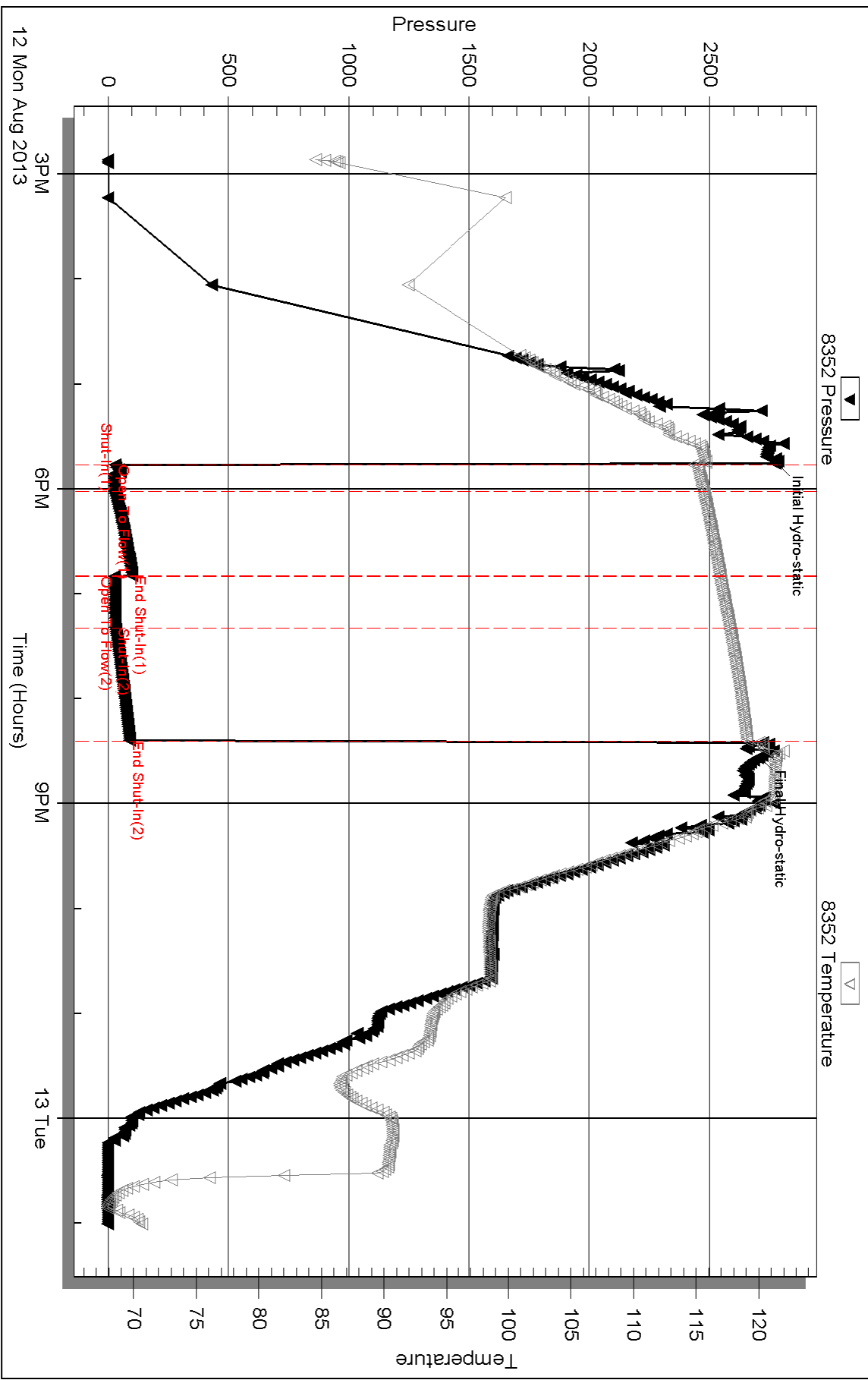
Inside

Herrman L. Loeb LLC

Coolhand #1-26

DST Test Number: 2

Pressure vs. Time



Triobite Testing, Inc

Ref. No: 52293

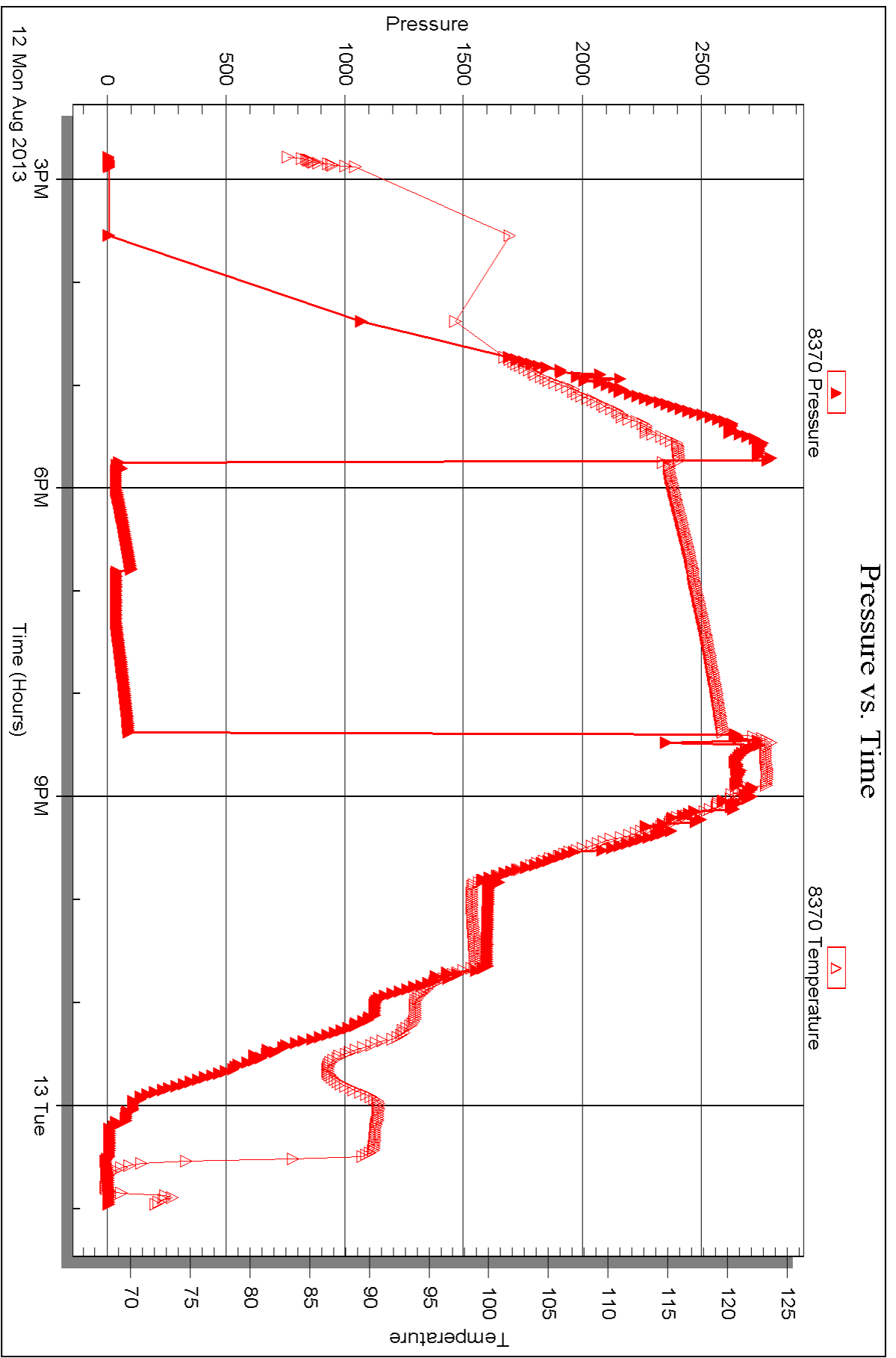
Printed: 2013.08.19 @ 14:45:51

Serial #: 8370

Outside Herman L. Loeb LLC

Coolhand #1-26

DST Test Number: 2





DRILL STEM TEST REPORT

Prepared For: **Herman L. Loeb LLC**

PO Box 838
Lawrenceville IL 62439

ATTN: Jon Christensen

Coolhand #1-26

26-33s-26w Meade KS

Start Date: 2013.08.14 @ 13:39:24

End Date: 2013.08.15 @ 00:59:09

Job Ticket #: 47523 DST #: 3

Trilobite Testing, Inc

PO Box 362 Hays, KS 67601

ph: 785-625-4778 fax: 785-625-5620

Printed: 2013.08.19 @ 14:49:24



TRILOBITE TESTING, INC.

DRILL STEM TEST REPORT

Herman L. Loeb LLC
 PO Box 838
 Lawrenceville IL 62439
 ATTN: Jon Christensen

26-33s-26w Meade KS
Coolhand #1-26
 Job Ticket: 47523 **DST#: 3**
 Test Start: 2013.08.14 @ 13:39:24

GENERAL INFORMATION:

Formation: **Miss- Spergen**
 Deviated: No Whipstock: ft (KB)
 Time Tool Opened: 17:57:24
 Time Test Ended: 00:59:09
 Interval: **6346.00 ft (KB) To 6396.00 ft (KB) (TVD)**
 Total Depth: 6444.00 ft (KB) (TVD)
 Hole Diameter: 7.88 inches Hole Condition: Fair
 Test Type: Conventional Straddle (Reset)
 Tester: Chris Staats
 Unit No: 47
 Reference Elevations: 2295.00 ft (KB)
 2284.00 ft (CF)
 KB to GR/CF: 11.00 ft

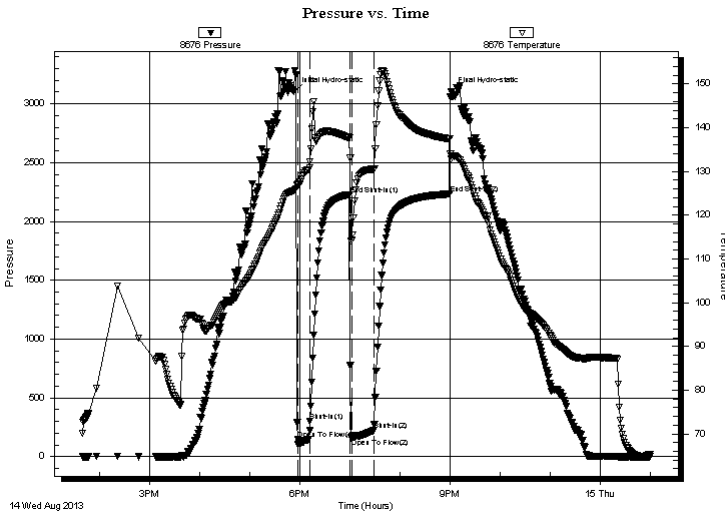
Serial #: 8676

Outside

Press @ Run Depth: 222.22 psig @ 6347.00 ft (KB) Capacity: 8000.00 psig
 Start Date: 2013.08.14 End Date: 2013.08.15 Last Calib.: 2013.08.15
 Start Time: 13:39:29 End Time: 00:59:09 Time On Btm: 2013.08.14 @ 17:53:24
 Time Off Btm: 2013.08.14 @ 21:01:39

TEST COMMENT: IF: Strong blow BOB 1 min GTS 8 min
 IS: Strong blow back BOB 31 min
 FF: Strong blow BOB 1 sec
 FS: Fair blow back 7"

PRESSURE SUMMARY



Time (Min.)	Pressure (psig)	Temp (deg F)	Annotation
0	3100.16	125.62	Initial Hydro-static
4	145.68	127.12	Open To Flow (1)
19	302.41	132.20	Shut-In(1)
67	2230.04	137.70	End Shut-In(1)
69	154.83	114.31	Open To Flow (2)
96	222.22	130.44	Shut-In(2)
186	2233.79	137.40	End Shut-In(2)
189	3105.06	132.91	Final Hydro-static

Recovery

Length (ft)	Description	Volume (bbl)
310.00	M,W 5% mud 95% water	2.68
155.00	G,W,M 5% gas 20% water 75% mud	2.17
0.00	GTS	0.00

* Recovery from multiple tests

Gas Rates

	Choke (inches)	Pressure (psig)	Gas Rate (Mcf/d)
First Gas Rate	0.25	6.00	32.05
Last Gas Rate	0.50	10.00	163.25
Max. Gas Rate	0.50	20.00	230.70



**TRILOBITE
TESTING, INC.**

DRILL STEM TEST REPORT

TOOL DIAGRAM

Herman L. Loeb LLC

26-33s-26w Meade KS

PO Box 838
Lawrenceville IL 62439

Coolhand #1-26

Job Ticket: 47523

DST#: 3

ATTN: Jon Christensen

Test Start: 2013.08.14 @ 13:39:24

Tool Information

Drill Pipe:	Length: 6150.00 ft	Diameter: 3.80 inches	Volume: 86.27 bbl	Tool Weight: 2400.00 lb
Heavy Wt. Pipe:	Length: 0.00 ft	Diameter: 0.00 inches	Volume: 0.00 bbl	Weight set on Packer: 25000.00 lb
Drill Collar:	Length: 183.00 ft	Diameter: 2.25 inches	Volume: 0.90 bbl	Weight to Pull Loose: 105000.0 lb
			<u>Total Volume: 87.17 bbl</u>	Tool Chased 2.00 ft
Drill Pipe Above KB:	15.00 ft			String Weight: Initial 98000.00 lb
Depth to Top Packer:	6346.00 ft			Final 100000.0 lb
Depth to Bottom Packer:	6444.00 ft			
Interval between Packers:	98.00 ft			
Tool Length:	126.00 ft			
Number of Packers:	2	Diameter: 6.75 inches		

Tool Comments:

Tool Description	Length (ft)	Serial No.	Position	Depth (ft)	Accum. Lengths
------------------	-------------	------------	----------	------------	----------------

C.O. Sub	1.00			6319.00	
Shut in tool	5.00			6324.00	
HMV	5.00			6329.00	
Jars	5.00			6334.00	
Safety Joint	3.00			6337.00	
Packer	4.00			6341.00	28.00 Bottom Of Top Packer
Packer	5.00			6346.00	
Stubb	1.00			6347.00	
Recorder	0.00	6773	Inside	6347.00	
Recorder	0.00	8676	Outside	6347.00	
Change Over Sub	1.00			6348.00	
Drill Pipe	32.00			6380.00	
Change Over Sub	1.00			6381.00	
Perforations	10.00			6391.00	
Blank Off Sub	1.00			6392.00	
Packer - Shale	5.00			6397.00	
Recorder	0.00	6719	Below	6397.00	
Perforations	10.00			6407.00	
Change Over Sub	1.00			6408.00	
Drill Pipe	32.00			6440.00	
Change Over Sub	1.00			6441.00	
Bullnose	3.00			6444.00	98.00 Bottom Packers & Anchor

Total Tool Length: 126.00



**TRILOBITE
TESTING, INC.**

DRILL STEM TEST REPORT

FLUID SUMMARY

Herman L. Loeb LLC

26-33s-26w Meade KS

PO Box 838
Lawrenceville IL 62439

Coolhand #1-26

Job Ticket: 47523

DST#: 3

ATTN: Jon Christensen

Test Start: 2013.08.14 @ 13:39:24

Mud and Cushion Information

Mud Type: Gel Chem

Cushion Type:

Oil API:

deg API

Mud Weight: 9.00 lb/gal

Cushion Length:

ft

Water Salinity:

11 ppm

Viscosity: 54.00 sec/qt

Cushion Volume:

bbbl

Water Loss: 8.38 in³

Gas Cushion Type:

Resistivity: 0.00 ohm.m

Gas Cushion Pressure:

psig

Salinity: 3500.00 ppm

Filter Cake: 0.20 inches

Recovery Information

Recovery Table

Length ft	Description	Volume bbbl
310.00	M,W 5% mud 95% water	2.681
155.00	G,W,M 5% gas 20% water 75% mud	2.174
0.00	GTS	0.000

Total Length: 465.00 ft

Total Volume: 4.855 bbl

Num Fluid Samples: 0

Num Gas Bombs: 0

Serial #:

Laboratory Name:

Laboratory Location:

Recovery Comments:



**TRILOBITE
TESTING, INC.**

DRILL STEM TEST REPORT

GAS RATES

Herman L. Loeb LLC

26-33s-26w Meade KS

PO Box 838
Lawrenceville IL 62439

Coolhand #1-26

Job Ticket: 47523

DST#: 3

ATTN: Jon Christensen

Test Start: 2013.08.14 @ 13:39:24

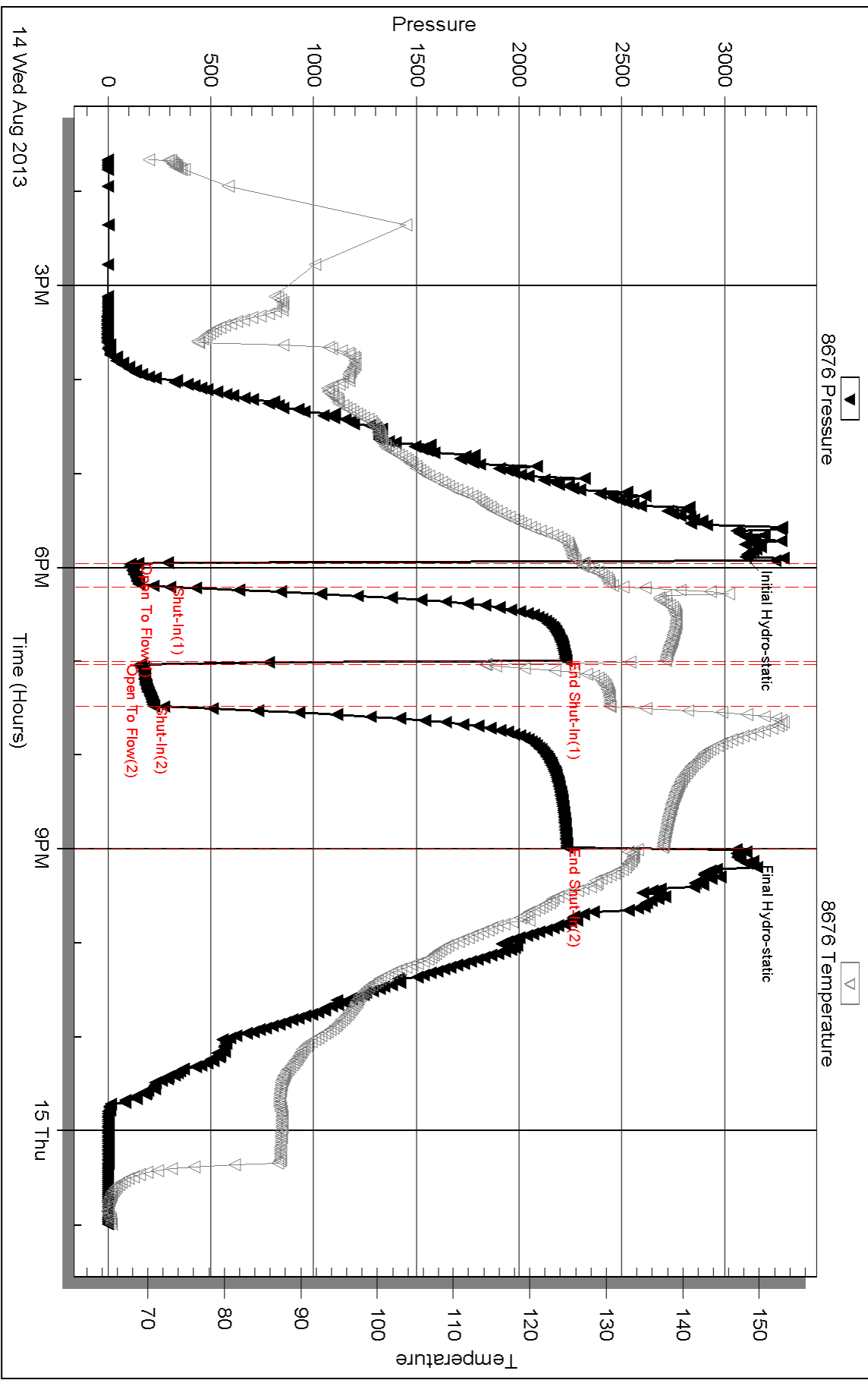
Gas Rates Information

Temperature: 59 (deg F)
Relative Density: 0.65
Z Factor: 0.8

Gas Rates Table

Flow Period	Elapsed Time	Choke (inches)	Pressure (psig)	Gas Rate (Mcf/d)
1	13	0.25	6.00	32.05
1	15	0.25	7.00	33.63
2	5	0.50	20.00	230.70
2	10	0.50	19.00	223.96
2	15	0.50	16.00	203.72
2	20	0.50	12.00	176.74
2	25	0.50	10.00	163.25
2	30	0.50	10.00	163.25

Pressure vs. Time

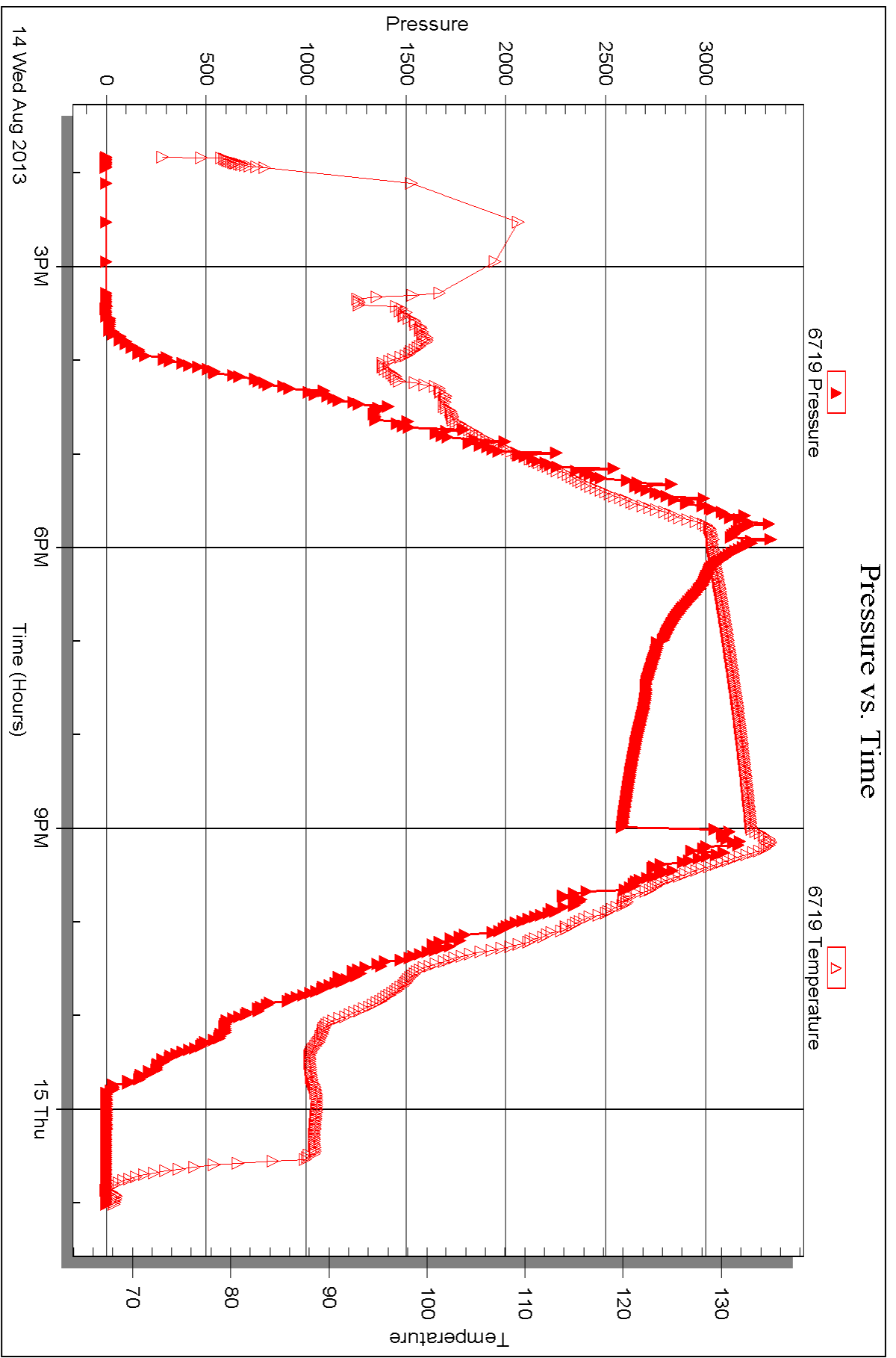


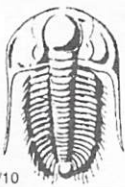
Serial #: 6719

Below (Stratthorn) L. Loeb LLC

Coolhand #1-26

DST Test Number: 3





TRILOBITE TESTING INC.

1515 Commerce Parkway • Hays, Kansas 67601

Test Ticket

NO. 52292

4/10

Well Name & No. COOLHAND # 1-26 Test No. 1 Date 8-9-13
 Company HERMAN L. LOEB, LLC Elevation 2295 KB 2284 GL
 Address P.O. Box 838 LAWRENCEVILLE IL. 62439
 Co. Rep / Geo. JON CHRISTENSEN Rig STERLING DRUG, # 2
 Location: Sec. 26 Twp. 33 S Rge. 26 W Co. PAWNEE State KS.

Interval Tested 5288 - 5321 Zone Tested PAWNEE
 Anchor Length 33 Drill Pipe Run 5068 Mud Wt. 9.1
 Top Packer Depth 5283 Drill Collars Run 210 Vis 52
 Bottom Packer Depth 5288 Wt. Pipe Run 0 WL 8.4 cc
 Total Depth 5321 Chlorides 4,000 ppm System LCM 2#
 Blow Description IF; Weak blow, 1/4-1/2", ISI; No blow,

FF; Strong blow, B.O.B. in 13 mins. FSI; No blow.

Rec	Feet of	%gas	%oil	%water	%mud
<u>465</u>	<u>Gas in pipe</u>				
<u>35</u>	<u>GOCM</u>	<u>6</u>	<u>6</u>	<u>88</u>	
Rec	Feet of	%gas	%oil	%water	%mud
Rec	Feet of	%gas	%oil	%water	%mud
Rec	Feet of	%gas	%oil	%water	%mud

Rec Total 35 Fluid BHT 119.0 Gravity N/A API RW N.C. @ - °F Chlorides 4,000 ppm
 (A) Initial Hydrostatic 2564 Test 1350 T-On Location 2141
 (B) First Initial Flow 18 Jars 250 T-Started 2242
 (C) First Final Flow 21 Safety Joint 75 T-Open 0222
 (D) Initial Shut-In 1121 Circ Sub 0538
 (E) Second Initial Flow 21 Hourly Standby 0849
 (F) Second Final Flow 32 Mileage 226 350.30 Comments _____
 (G) Final Shut-In 1810 Sampler _____
 (H) Final Hydrostatic 2557 Straddle _____

Initial Open 15 Ruined Shale Packer _____
 Initial Shut-In 45 Ruined Packer _____
 Final Flow 45 Extra Packer _____
 Final Shut-In 90 Extra Recorder _____
 Sub Total 0 Day Standby _____
 Total 2025.30 Accessibility _____
 Sub Total 2025.30 MP/DST Disc't _____

Approved By [Signature] Our Representative [Signature]
 Trilobite Testing Inc. shall not be liable for damaged of any kind of the property or personnel of the one for whom a test is made, or for any loss suffered or sustained, directly or indirectly, through the use of its equipment, or its statements or opinion concerning the results of any test, tools lost or damaged in the hole shall be paid for at cost by the party for whom the test is made.



TRILOBITE TESTING INC.

1515 Commerce Parkway • Hays, Kansas 67601

Test Ticket

NO. 52293

Well Name & No. COOLHAND # 1-26 Test No. 2 Date 8-12-13
 Company HERMAN L. LOEB, LLC Elevation 2295 KB 2284 GL
 Address P.O. Box 838, LAWRENCEVILLE IL. 62439
 Co. Rep / Geo. JOHN CHRISTENSEN Rig STERLING DRILL # 2
 Location: Sec. 26 Twp. 33S Rge. 26W Co. MEADE State KS.

Interval Tested 5687 - 5740' Zone Tested CHESTER
 Anchor Length 53' Drill Pipe Run 5481' Mud Wt. 9.0
 Top Packer Depth 5682' Drill Collars Run 210' Vis SI
 Bottom Packer Depth 5687' Wt. Pipe Run 0 WL 8.0cc
 Total Depth 5740' Chlorides 4,000 ppm System LCM 7#

Blow Description IF: Weak blow. Slow increase to 1 1/2". IST: No blow.
FF: Weak blow. 1 1/2 - 2". FSI: No blow.

Rec	Feet of	%gas	%oil	%water	%mud
<u>35</u>	<u>Coas in pipe</u>				
<u>25</u>	<u>Drilg. Mud.</u>				

Rec Total 25 Fluid BHT 119° Gravity N/A API RW N.C. @ — °F Chlorides 4,000 ppm

(A) Initial Hydrostatic <u>2776</u>	<input checked="" type="checkbox"/> Test <u>1350</u>	* T-On Location <u>1425</u>
(B) First Initial Flow <u>31</u>	<input checked="" type="checkbox"/> Jars <u>250</u>	T-Started <u>1451</u>
(C) First Final Flow <u>27</u>	<input checked="" type="checkbox"/> Safety Joint <u>75</u>	T-Open <u>1746</u>
(D) Initial Shut-In <u>101</u>	<input type="checkbox"/> Circ Sub	T-Pulled <u>2023</u>
(E) Second Initial Flow <u>27</u>	<input type="checkbox"/> Hourly Standby	T-Out <u>0100</u>
(F) Second Final Flow <u>31</u>	<input checked="" type="checkbox"/> Mileage <u>226</u> 350.30	Comments
(G) Final Shut-In <u>90</u>	<input type="checkbox"/> Sampler	
(H) Final Hydrostatic <u>2705</u>	<input type="checkbox"/> Straddle	<input type="checkbox"/> Ruined Shale Packer
	<input type="checkbox"/> Shale Packer	<input type="checkbox"/> Ruined Packer
	<input type="checkbox"/> Extra Packer	<input type="checkbox"/> Extra Copies

Initial Open 15
 Initial Shut-In 45
 Final Flow 30
 Final Shut-In 60

Day Standby x2+ * 1d 29.75h
 Accessibility
 Sub Total 2025.30

Sub Total 991.67
 Total 3016.97
 MP/DST Disc't

Approved By [Signature] Our Representative [Signature]
 TriLOBITE TESTING, Inc. shall not be liable for damaged of any kind of the property or personnel of the one for whom a test is made, or for any loss suffered or sustained, directly or indirectly, through the use of its equipment, or its statements or opinion concerning the results of any test, tools lost or damaged in the hole shall be paid for at cost by the party for whom the test is made.



TRILOBITE TESTING INC.

P.O. Box 1733 • Hays, Kansas 67601

Test Ticket

NO. 47523

4/10

Well Name & No. Cool Hand #1-26 Test No. 3 Date 8-14-13
 Company Herman L. Loeb LLC Elevation 2295 KB 2284 GL
 Address PO Box 838 Lawrenceville IL 62439
 Co. Rep / Geo. George Payne / Jon Christensen Rig
 Location: Sec. 26 Twp. 33 Rge. 26 Co. Meade State KS

Interval Tested 6346 - 6396 Zone Tested Miss Spengen
 Anchor Length 50 Drill Pipe Run 6150 Mud Wt. 9.1
 Top Packer Depth 6341 Drill Collars Run 183 Vis 54
 Bottom Packer Depth 6346 Wt. Pipe Run 0 WL 8.4
 Total Depth 6444 Chlorides 3500 ppm System LCM 4#

Blow Description IF: Strong blow BOB 1 min GTS 8 min
ISF: Strong blow back BOB 31 min
FF: Strong blow BOB 1 sec
FSI: Fair blow back >" Bottom Straddle packer ^{held} started.

Rec	Feet of	%gas	%oil	%water	%mud
	<u>6333' GIP</u>				
Rec <u>310'</u>	Feet of <u>M, W</u>	%gas	%oil <u>9.5</u>	%water <u>5</u>	%mud
Rec <u>155'</u>	Feet of <u>G, W, M</u>	<u>5</u> %gas	%oil <u>20</u>	%water <u>75</u>	%mud
Rec	Feet of	%gas	%oil	%water	%mud
Rec	Feet of	%gas	%oil	%water	%mud
Rec Total <u>465'</u>	BHT <u>140</u>	Gravity <u>—</u>	API RW <u>.62 @ 66</u>	°F Chlorides <u>11,000</u>	ppm

(A) Initial Hydrostatic 3100 Test 1450 T-On Location 13:15
 (B) First Initial Flow 145 Jars 250 T-Started 13:39
 (C) First Final Flow 302 Safety Joint 75 T-Open 17:57
 (D) Initial Shut-In 2230 Circ Sub _____ T-Pulled 21:00
 (E) Second Initial Flow 154 Hourly Standby _____ T-Out 00:45
 (F) Second Final Flow 222 Mileage ~~230 miles~~ 700.60 Comments loaded tools
 (G) Final Shut-In 2233 Sampler _____ 8-16 21:00
 (H) Final Hydrostatic 3105 Straddle 600 Ruined Shale Packer _____
 Shale Packer _____ Ruined Packer _____
 Extra Packer _____ Extra Copies _____
 Extra Recorder _____ Sub Total 800
 Day Standby 1d 20.25h Total 3875.60
 Accessibility _____ MP/DST Disc't _____
 Sub Total 3075.60

Initial Open 15
 Initial Shut-In 45
 Final Flow 30
 Final Shut-In 90

Approved By [Signature] Our Representative [Signature]

Trilobite Testing Inc. shall not be liable for damaged of any kind of the property or personnel of the one for whom a test is made, or for any loss suffered or sustained, directly or indirectly, through the use of its equipment, or its statements or opinion concerning the results of any test, tools lost or damaged in the hole shall be paid for at cost by the party for whom the test is made.



6076
796
Cool
6438

PAGE	CUST NO	INVOICE DATE
1 of 1	1007589	08/05/2013
INVOICE NUMBER		
1717 - 91253739		

Liberal (620) 624-2277
 B HERMAN L LOEB LLC
 I PO Box: 838
 L LAWRENCEVILLE
 L IL US 62439
 T
 O ATTN: ACCOUNTS PAYABLE

J LEASE NAME Coolhand #1-26
 O LOCATION
 B COUNTY Meade
 S STATE KS
 I JOB DESCRIPTION Cement-New Well Casing/Pi
 E JOB CONTACT

JOB #	EQUIPMENT #	PURCHASE ORDER NO.	TERMS	DUE DATE
40624968	19570		Net - 30 days	09/04/2013

For Service Dates: 08/04/2013 to 08/04/2013

0040624968

171704184A Cement-New Well Casing/Pi 08/04/2013
 8 5/8" Surface

PAID
42843
AUG 15 2013
SCANNED

	QTY	U of M	UNIT PRICE	INVOICE AMOUNT
A-Con' Blend	330.00	EA	12.20	4,026.20 T
Premium Plus Cement	150.00	EA	10.69	1,603.80 T
Calcium Chloride	1,215.00	EA	0.69	836.83 T
Celloflake	120.00	EA	2.43	291.24 T
C-51	63.00	EA	16.40	1,033.12 T
"Guide Shoe - Regular, 8 5/8" (Blue)"	1.00	EA	249.26	249.26
"Flapper Ins. Ft. Vlv., 8 5/8" (Blue)"	1.00	EA	183.67	183.67
Antelope Strd Bow Cent. 8 5/8 X 12 1/4	3.00	EA	95.11	285.34
"Cmt Basket, Canvas 8 5/8"	1.00	EA	688.75	688.75
"Top Rubber Cmt Plug, 8 5/8""	1.00	EA	147.59	147.59
Heavy Equipment Mileage	150.00	MI	4.59	688.75
Blending & Mixing Service Charge	480.00	BAG	0.92	440.80
"Proppant & Bulk Del. Chgs., per ton mil	1,130.00	EA	1.05	1,185.96
Depth Charge; 1001-2000'	1.00	EA	983.93	983.93
Plug Container Util. Chg.	1.00	EA	163.99	163.99
"Unit Mileage Chg (PU, cars one way)"	50.00	MI	2.79	139.39
"Service Supervisor, first 8 hrs on loc.	1.00	EA	114.79	114.79

PLEASE REMIT TO:	SEND OTHER CORRESPONDENCE TO:	SUB TOTAL	13,063.41
BASIC ENERGY SERVICES, LP	BASIC ENERGY SERVICES, LP	TAX	634.98
PO BOX 841903	801 CHERRY ST, STE 2100	INVOICE TOTAL	13,698.39
DALLAS, TX 75284-1903	FORT WORTH, TX 76102		



BASICSM
ENERGY SERVICES
PRESSURE PUMPING & WIRELINE

1700 S. Country Estates Rd.
Liberal, Kansas 67905
Phone 620-624-2277

FIELD SERVICE TICKET
1717 04184 A

DATE _____ TICKET NO. _____

DATE OF JOB <i>8-4-13</i>	DISTRICT <i>1717</i>	NEW WELL <input checked="" type="checkbox"/>	OLD WELL <input type="checkbox"/>	PROD <input type="checkbox"/>	INJ <input type="checkbox"/>	WDW <input type="checkbox"/>	CUSTOMER ORDER NO.:		
CUSTOMER <i>Herman Loeb</i>	LEASE <i>Coolhand #1-26</i>		WELL NO.						
ADDRESS		COUNTY <i>Mead</i>		STATE <i>KS</i>					
CITY	STATE	SERVICE CREW <i>J. Chavez, Tommy, Sergio, Cesar</i>							
AUTHORIZED BY <i>Ten Bort SD.</i>		JOB TYPE: <i>242 8 3/8 Surface</i>							
EQUIPMENT#	HRS	EQUIPMENT#	HRS	EQUIPMENT#	HRS	TRUCK CALLED	DATE	AM	TIME
<i>78938</i>	<i>8</i>	<i>70897</i>	<i>- 8</i>	<i>33021</i>	<i>- 8</i>	<i>8-4-13</i>	<i>8-4-13</i>	<i>AM</i>	<i>730</i>
<i>14354</i>	<i>8</i>	<i>19570</i>	<i>- 1</i>	<i>14284</i>	<i>- 1</i>	<i>8-4-13</i>	<i>8-4-13</i>	<i>AM</i>	<i>1100</i>
<i>19578</i>	<i>- 1</i>					<i>8-4-13</i>	<i>8-4-13</i>	<i>AM</i>	<i>330</i>
						<i>8-4-13</i>	<i>8-4-13</i>	<i>AM</i>	<i>530</i>
						<i>8-4-13</i>	<i>8-4-13</i>	<i>AM</i>	<i>600</i>
						MILES FROM STATION TO WELL			<i>50</i>

CONTRACT CONDITIONS: (This contract must be signed before the job is commenced or merchandise is delivered).

The undersigned is authorized to execute this contract as an agent of the customer. As such, the undersigned agrees and acknowledges that this contract for services, materials, products, and/or supplies includes all of and only those terms and conditions appearing on the front and back of this document. No additional or substitute terms and/or conditions shall become a part of this contract without the written consent of an officer of Basic Energy Services LP.

SIGNED: *[Signature]*
(WELL OWNER, OPERATOR, CONTRACTOR OR AGENT)

ITEM/PRICE REF. NO.	MATERIAL, EQUIPMENT AND SERVICES USED	UNIT	QUANTITY	UNIT PRICE	\$ AMOUNT	
CL101	A-Con Blend	✓ SK	330		6138 00	
CL110	Armeny Plus Cont	✓ SK	150		2445 00	
CC109	Calcium Chloride	✓ lb	1215		1275 75	
CC102	Cello Flake	✓ lb	120		444 00	
CC130	C-51	✓ lb	63		1575 00	
CF253	Guide Shoe	✓ EA	1		380 00	
CF1453	Insert Flood Valve	✓ EA	1		280 00	
CF4405	Centralizer	✓ EA	3		435 00	
CF4550	Cont Basket	✓ EA	1		1050 00	
CF105	Rubber Plug	✓ EA	1		225 00	
E101	Heavy Equipment Mileage	mi	150		1050 00	
CE240	Blendy + Meny Charge	SK	480		672 00	
E100	Pickup Mileage	mi	50		212 50	
S003	Service Supervisor	EA	1		175 00	
E113	Bulk Delivery Charge	tn	1130		1808 00	
CE202	Depth Charge	4hrs	1		1500 00	
CE504	Plug Contingy Charge	job	1		250 00	
					SUB TOTAL	13063 41

CHEMICAL / ACID DATA:			

SERVICE & EQUIPMENT	%TAX ON \$		
MATERIALS	%TAX ON \$		
TOTAL			

SERVICE REPRESENTATIVE <i>[Signature]</i>	THE ABOVE MATERIAL AND SERVICE ORDERED BY CUSTOMER AND RECEIVED BY: <i>[Signature]</i>
FIELD SERVICE ORDER NO.	(WELL OWNER OPERATOR CONTRACTOR OR AGENT)



BASICSM
ENERGY SERVICES
Liberal, Kansas

Cement Report

Customer <i>Herman Loeb</i>		Lease No.		Date <i>8-13</i>		
Lease <i>Coolhead</i>		Well # <i>1-26</i>		Service Receipt <i>04184</i>		
Casing <i>8 5/8</i>	Depth <i>1403</i>	County <i>Meade</i>		State <i>KS</i>		
Job Type <i>247 Surface</i>		Formation		Legal Description <i>36-33-26</i>		
Pipe Data				Perforating Data		Cement Data
Casing size <i>8 5/8</i>		Tubing Size		Shots/Ft		Lead <i>330SKA-Con</i> <i>2,95ft-5k</i>
Depth <i>1403</i>		Depth		From	To	
Volume <i>86615</i>		Volume		From	To	<i>18.164-5k-11.4#</i>
Max Press <i>1500</i>		Max Press		From	To	Tail in <i>150SK Class C</i> <i>1,34ft-5k</i>
Well Connection <i>8 5/8</i>		Annulus Vol.		From	To	
Plug Depth <i>1361</i>		Packer Depth		From	To	<i>6.3364-5k 14.8#</i>
Time	Casing Pressure	Tubing Pressure	Bbls. Pumped	Rate	Service Log	
<i>1100 PM</i>					<i>Arrive On location</i>	
<i>1120</i>					<i>Safety Meeting Pkg Up</i>	
<i>100</i>					<i>Rig Run Casing</i>	
<i>300</i>					<i>Circulate w/ Rig</i>	
<i>320</i>					<i>Hook up to BCS</i>	
<i>325</i>	<i>1000</i>		<i>1.0</i>	<i>1.0</i>	<i>Pressure Test</i>	
<i>330</i>	<i>300</i>		<i>173</i>	<i>6.0</i>	<i>Pump Lead end @ 11.4</i>	
<i>400</i>	<i>200</i>		<i>36</i>	<i>1.0</i>	<i>Pump Tail end @ 14.8</i>	
<i>415</i>					<i>Drop Plug Wash Up</i>	
<i>420</i>	<i>200</i>		<i>76</i>	<i>6.0</i>	<i>Displace</i>	
<i>440</i>	<i>400</i>		<i>10</i>	<i>2.0</i>	<i>Stop Down</i>	
<i>445</i>	<i>800</i>		<i>.1</i>	<i>11</i>	<i>Land Plug - Float Hold</i>	
					<i>Cement To Surface</i>	
					<i>Job Complete</i>	
<i>Thanks For Using Basic Energy Services</i>						
Service Units	<i>78976</i>	<i>70847-19570</i>	<i>14354-19578</i>	<i>33021-14284</i>		
Driver Names	<i>J. Moore</i>	<i>Tony</i>	<i>Cesar</i>	<i>Satgo</i>		

Customer Representative

Ben Smith

Station Manager

J. Moore

Cementer



6076
796 Cool
6438

PAGE	CUST NO	INVOICE DATE
1 of 1	1007589	08/21/2013
INVOICE NUMBER		
1717 - 91263914		

Liberal (620) 624-2277
 B HERMAN L LOEB LLC
 I PO Box: 838
 L LAWRENCEVILLE
 L IL US 62439
 T
 O **ATTN:** ACCOUNTS PAYABLE

J **LEASE NAME** Coolhand #1-26
 O **LOCATION**
 B **COUNTY** Meade
 S **STATE** KS
 I **JOB DESCRIPTION** Cement-New Well Casing/Pi
 E **JOB CONTACT**

JOB #	EQUIPMENT #	PURCHASE ORDER NO.	TERMS	DUE DATE
40630604	27462		Net - 30 days	09/20/2013

	QTY	U of M	UNIT PRICE	INVOICE AMOUNT
For Service Dates: 08/19/2013 to 08/19/2013				
0040630604				
171704255A Cement-New Well Casing/Pi 08/19/2013				
5 1/2" Longstring				
50/50 POZ	350.00	EA	7.38	2,583.53 T
Gypsum	1,470.00	EA	0.50	739.83 T
KCL	791.00	EA	1.01	796.20 T
Gilsonite	2,100.00	EA	0.45	944.16 T
Celloflake	88.00	EA	2.48	218.49 T
C-41P	74.00	EA	2.68	198.63 T
C-15	147.00	EA	8.39	1,233.05 T
"Cmt. Shoe Packer Type, 5 1/2" (Red)"	1.00	EA	2,482.88	2,482.88
"Latch Down Plug & Baffle, 5 1/2" (Blu	1.00	EA	268.42	268.42
Antelope 5 1/2 X 7 7/8 Turbo	12.00	EA	50.33	603.94
"Cmt Basket, Canvas 5 1/2"	3.00	EA	640.85	1,922.55
"Cement Port Collar, 5 1/2" (Red)"	1.00	EA	3,221.04	3,221.04
Industrial Rubber Thread Lock Kit	1.00	EA	22.82	22.82
Mud Flush	1,000.00	EA	0.58	577.10 T
Heavy Equipment Mileage	100.00	MI	4.70	469.73
Blending & Mixing Service Charge	350.00	BAG	0.94	328.81
"Proppant & Bulk Del. Chgs., per ton mil	735.00	EA	1.07	789.15
Depth Charge; 7001'-8000'	1.00	EA	2,415.77	2,415.77
Plug Container Util. Chg.	1.00	EA	167.76	167.76
"Unit Mileage Chg (PU, cars one way)"	50.00	MI	2.85	142.60
"Service Supervisor, first 8 hrs on loc.	1.00	EA	117.43	117.43

~~PAID~~
 AUG 29 2013
 SCANNED

PAID
 43373
 SEP 06 2013
 SCANNED

PLEASE REMIT TO:	SEND OTHER CORRESPONDENCE TO:	SUB TOTAL	20,243.89
BASIC ENERGY SERVICES, LP	BASIC ENERGY SERVICES, LP	TAX	594.22
PO BOX 841903	801 CHERRY ST, STE 2100	INVOICE TOTAL	20,838.11
DALLAS, TX 75284-1903	FORT WORTH, TX 76102		



BASICSM
ENERGY SERVICES
PRESSURE PUMPING & WIRELINE

1700 S. Country Estates Rd.
Liberal, Kansas 67905
Phone 620-624-2277

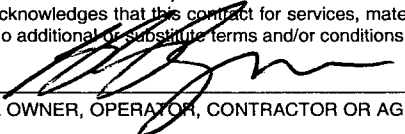
FIELD SERVICE TICKET
1717 04255 A

DATE _____ TICKET NO. _____

DATE OF JOB 8-19-13 DISTRICT 1717		NEW WELL <input checked="" type="checkbox"/> OLD WELL <input type="checkbox"/> PROD <input type="checkbox"/> INJ <input type="checkbox"/> WDW <input type="checkbox"/> CUSTOMER ORDER NO.:							
CUSTOMER Herman Loeb		LEASE Coolhand #1-26		WELL NO.					
ADDRESS		COUNTY Meade		STATE KS					
CITY		STATE		SERVICE CREW E Mendoza, C Garcia					
AUTHORIZED BY J Bennett		JOB TYPE: 242- 5 1/2" Production							
EQUIPMENT#	HRS	EQUIPMENT#	HRS	EQUIPMENT#	HRS	TRUCK CALLED	DATE	AM	TIME
34926	8						8-18-13	5:00	
27462	8					ARRIVED AT JOB	8-18-13	7:00	
30463	2					START OPERATION	8-19-13	8:30	
37547	6					FINISH OPERATION		10:00	
						RELEASED		11:00	
						MILES FROM STATION TO WELL	50 mi		

CONTRACT CONDITIONS: (This contract must be signed before the job is commenced or merchandise is delivered).

The undersigned is authorized to execute this contract as an agent of the customer. As such, the undersigned agrees and acknowledges that this contract for services, materials, products, and/or supplies includes all of and only those terms and conditions appearing on the front and back of this document. No additional or substitute terms and/or conditions shall become a part of this contract without the written consent of an officer of Basic Energy Services LP.

SIGNED: 
(WELL OWNER, OPERATOR, CONTRACTOR OR AGENT)


ITEM/PRICE REF. NO.	MATERIAL, EQUIPMENT AND SERVICES USED	UNIT	QUANTITY	UNIT PRICE	\$ AMOUNT
CC104	50/50 Poz	✓ SK	350		3850 00
CC113	Gypsum	✓ lb	1470		1102 50
CC700	bc	✓	791		1186 50
CC201	Gilsonite	✓	2100		1407 00
CC102	Cellflake	✓	88		325 60
CC105	C-41P	✓	74		296 00
CC103	C-15	✓	147		1837 50
CF1001	5 1/2" Packer Shoe	✓ ea	1		3700 00
CF607	Latch Down Plug + Baffle	✓	1		400 00
CF4452	Turbolizers	✓	12		900 00
CF4552	Basket	✓	3		2865 00
CF471	Port Collar	✓	1		4800 00
CF3000	Thread Lock	✓	1		34 00
CC161	Mudflush	✓ gal	1000		860 00
E101	Heavy Equipment Mileage	mi	100		700 00
CE240	Blending & Mixing Service	SK	350		490 00
E113	Proppant + Bulk Delivery	cu yd	735		1176 00
CE208	Pump Depth: 7001-8000'	thr	1		3600 00
CE504	Plug Container	ea	1		250 00
SUB TOTAL					70243 89

CHEMICAL / ACID DATA:

SERVICE & EQUIPMENT	%TAX ON \$
MATERIALS	%TAX ON \$

TOTAL

SERVICE REPRESENTATIVE 

THE ABOVE MATERIAL AND SERVICE ORDERED BY CUSTOMER AND RECEIVED BY: 

(WELL OWNER OPERATOR CONTRACTOR OR AGENT)

FIELD SERVICE ORDER NO.



BASICSM
ENERGY SERVICES
PRESSURE PUMPING & WIRELINE

1700 S. Country Estates Rd.
P.O. Box 129
Liberal, Kansas 67905
Phone 620-624-2277

FIELD SERVICE TICKET CONT.

TICKET NO. 04255

ITEM/PRICE REF. NO.	MATERIAL, EQUIPMENT AND SERVICES USED	UNIT	QUANTITY	UNIT PRICE	\$ AMOUNT
E100	Unit Mileage	mi	50		212.50
S003	Service Supervisor	ea	1		175.00



BASICSM
ENERGY SERVICES
Liberal, Kansas

Cement Report

Customer	Herman Loeb	Lease No.		Date	8-19-13
Lease	Coolhand	Well #	1-26	Service Receipt	04255
Casing	5 1/2" 17#	Depth	7388'	County	Meade
State				State	KS
Job Type	242-5 1/2" Production	Formation		Legal Description	36-33-26

Pipe Data		Perforating Data		Cement Data
Casing size	5 1/2" 17#	Tubing Size		Lead
Depth	7388'	Depth	From To	Tail in 300 sk 50/50 POZ
Volume	Disp-170 bbl	Volume	From To	
Max Press	3000 #	Max Press	From To	
Well Connection	TD-7500'	Annulus Vol.	From To	
Plug Depth	SJ-48'	Packer Depth	From To	

Time	Casing Pressure	Tubing Pressure	Bbls. Pumped	Rate	Service Log
7:00					on loc-site assesment
7:15					spot trucks - rig up
7:30 am					CSG on btm, circ. thr
8:00					safety meeting / JSA
9:15					pressure test @ 3000#
9:20	300		5	5	pump 5 bbl H2O spacer
9:22	300		24	5	pump 1000 gal mud flush
9:30	300		5	5	pump 5 bbl H2O spacer
9:35	200		21.6	5	Mix + pump 300 sk 50/50 POZ @ 14.0# - 1.34 ft3/sk
					wash lines
9:50	0		0	5	drop latch down plug, disp CSG
10:25	1200		160	2	slow rate
10:30	1800		170	0	land plug, float held
9:30					plug rat + mouse holes w/ 50 sk
					job complete

Service Units	34726	27462	30463-37547		
Driver Names	A Owers	E Menden	C Garcia		

G Payne Customer Representative
 J Bennett Station Manager
 A Owers Cementer



6076
796 Cool
6438

PAGE 1 of 1	CUST NO 1007589	INVOICE DATE 08/28/2013
INVOICE NUMBER 1717 - 91271133		

Liberal (620) 624-2277
 B HERMAN L LOEB LLC
 I PO Box: 838
 L LAWRENCEVILLE
 L IL US 62439
 T
 O ATTN: ACCOUNTS PAYABLE

J LEASE NAME Coolhand #1-26
 O LOCATION
 B COUNTY Meade
 S STATE KS
 I JOB DESCRIPTION Cement-Casing Seat-Prod W
 T
 E JOB CONTACT

JOB #	EQUIPMENT #	PURCHASE ORDER NO.	TERMS	DUE DATE
40633635	27462		Net - 30 days	09/27/2013

For Service Dates: 08/27/2013 to 08/27/2013

0040633635

171704258A Cement-Casing Seat-Prod W 08/27/2013
 Port Collar

	QTY	U of M	UNIT PRICE	INVOICE AMOUNT
60/40 POZ	100.00	EA	8.40	840.00 T
Premium Plus Cement	120.00	EA	11.41	1,369.20 T
Calcium Chloride	398.00	EA	0.74	292.53 T
Celloflake	55.00	EA	2.59	142.45 T
Cement Gel	344.00	EA	0.18	60.20 T
Mud Flush	500.00	EA	0.60	301.00 T
Heavy Equipment Mileage	100.00	MI	4.90	490.00 T
Blending & Mixing Service Charge	220.00	BAG	0.98	215.60 T
"Proppant & Bulk Del. Chgs., per ton mil	497.50	EA	1.12	557.20 T
Depth Charge; 2001'-3000'	1.00	EA	1,260.00	1,260.00 T
Plug Container Util. Chg.	1.00	EA	175.00	175.00 T
"Unit Mileage Chg (PU, cars one way)"	50.00	MI	2.98	148.75 T
"Service Supervisor, first 8 hrs on loc.	1.00	EA	122.50	122.50 T

PAID
 43373
 SEP 06 2013

SCANNED

PLEASE REMIT TO:	SEND OTHER CORRESPONDENCE TO:	SUB TOTAL	5,974.43
BASIC ENERGY SERVICES,LP	BASIC ENERGY SERVICES,LP	TAX	486.92
PO BOX 841903	801 CHERRY ST, STE 2100	INVOICE TOTAL	6,461.35
DALLAS, TX 75284-1903	FORT WORTH, TX 76102		



BASICSM
ENERGY SERVICES
PRESSURE PUMPING & WIRELINE

1700 S. Country Estates Rd.
Liberal, Kansas 67905
Phone 620-624-2277

FIELD SERVICE TICKET
1717 04258 A

DATE _____ TICKET NO. _____

DATE OF JOB: 8-27-13 DISTRICT: 1717		NEW WELL <input checked="" type="checkbox"/> OLD WELL <input type="checkbox"/> PROD <input type="checkbox"/> INJ <input type="checkbox"/> WDW <input type="checkbox"/> CUSTOMER ORDER NO.:							
CUSTOMER: Herman Loeb		LEASE: Coolhard # 1-26		WELL NO.:					
ADDRESS:		COUNTY: Meade		STATE: KS					
CITY: STATE:		SERVICE CREW: E Mendosa, C Garcia							
AUTHORIZED BY: J Bennett		JOB TYPE: 241- Part ' Collar							
EQUIPMENT#	HRS	EQUIPMENT#	HRS	EQUIPMENT#	HRS	TRUCK CALLED	8-27-13	AM	8:00
34726	8					ARRIVED AT JOB		PM	11:00
27462	8					START OPERATION		AM	2:00
19827	2					FINISH OPERATION		AM	4:00
19883	6					RELEASED		AM	5:00
						MILES FROM STATION TO WELL	50	MI	

CONTRACT CONDITIONS: (This contract must be signed before the job is commenced or merchandise is delivered).

The undersigned is authorized to execute this contract as an agent of the customer. As such, the undersigned agrees and acknowledges that this contract for services, materials, products, and/or supplies includes all of and only those terms and conditions appearing on the front and back of this document. No additional or substitute terms and/or conditions shall become a part of this contract without the written consent of an officer of Basic Energy Services LP.

SIGNED: Wm M X
(WELL OWNER, OPERATOR, CONTRACTOR OR AGENT)

ITEM/PRICE REF. NO.	MATERIAL, EQUIPMENT AND SERVICES USED	UNIT	QUANTITY	UNIT PRICE	\$ AMOUNT
CL103	60/40 Poz	sk	100		1200 00
CL110	Premium Plus	sk	120		1956 00
CL109	Calcium Chloride	lb	318		417 90
CC102	Cellulose	lb	55		203 50
CC200	Cement Grl	lb	344		86 00
CC151	Mud Plus	gal	500		430 00
E101	Heavy Equipment Mileage	mi	100		700 00
CE240	Blending & Mixing Service	sk	220		308 00
F113	Proppant & Bulk Delivery	cu/yd	498		796 00
CE203	Pump Depth 2001-3000	hr	1		1800 00
CE504	Plus Container	ea	1		250 00
E100	Unit Mileage	mi	50		212 50
S003	Service Supervisor	ea	1		175 00
SUB TOTAL					5974.43

CHEMICAL / ACID DATA:			

SERVICE & EQUIPMENT	%TAX ON \$	
MATERIALS	%TAX ON \$	
TOTAL		

SERVICE REPRESENTATIVE: <u>Bill Owen</u>	THE ABOVE MATERIAL AND SERVICE ORDERED BY CUSTOMER AND RECEIVED BY:
--	---

FIELD SERVICE ORDER NO. _____

(WELL OWNER OPERATOR CONTRACTOR OR AGENT)



BASIC™
ENERGY SERVICES
Liberal, Kansas

Cement Report

Customer <u>Herman Coeb</u>		Lease No.		Date <u>8-26-13</u>	
Lease <u>Coolhand</u>		Well # <u>1-26</u>		Service Receipt <u>04258</u>	
Casing	Depth	County <u>Meade</u>		State <u>KS</u>	
Job Type <u>241- Port Collar</u>		Formation		Legal Description <u>36-33-26</u>	
Pipe Data			Perforating Data		Cement Data
Casing size <u>8 1/2" 17#</u>	Tubing Size <u>2 3/8"</u>	Shots/Ft		Lead <u>100 sk</u>	
Depth	Depth <u>2607'</u>	From	To	60/40 poz	
Volume	Volume <u>10 bbl</u>	From	To	Tail in <u>120 sk</u>	
Max Press	Max Press <u>1500#</u>	From	To	Premium Plus	
Well Connection	Annulus Vol.	From	To		
Plug Depth	Packer Depth <u>2607'</u>	From	To		
	<u>port collar</u>				
Time	Casing Pressure	Tubing Pressure	Bbls. Pumped	Rate	Service Log
<u>11:00</u>					on loc-site assessment
<u>2:00</u>					spot trucks - rig up
					safety meeting / SA
					pressure test 1500#
		<u>300</u>	<u>10</u>	<u>3</u>	open port collar
		<u>300</u>	<u>27.8</u>	<u>5</u>	mix & pump 100 sk 60/40 poz
					w/ 2% CC, 1/4# PF, 6% total gel
		<u>300</u>	<u>28.6</u>	<u>5</u>	@ 135 ppv - 1.0 sk 1 3/4 sk
		<u>300</u>	<u>28.6</u>	<u>5</u>	switch to 120 sk premium plus
					w/ 2% CC, 1/4# PF @
					14.8 ppv - 1.0 sk 1 3/4 sk
		<u>800</u>	<u>10</u>	<u>4</u>	disp 10 bbl
					shut port collar - test to 1000#
	<u>300</u>		<u>20</u>	<u>3</u>	run 2 fts - re v out tubin
					clean
					job complete
Service Units	<u>34720</u>	<u>21062</u>	<u>14871-14883</u>		
Driver Names	<u>A Owens</u>	<u>E. Munk</u>	<u>G. Garcia</u>		

Wes

Customer Representative

T Bennett

Station Manager

A Owens

Cementer

Conservation Division
Finney State Office Building
130 S. Market, Rm. 2078
Wichita, KS 67202-3802



Phone: 316-337-6200
Fax: 316-337-6211
<http://kcc.ks.gov/>

Mark Sievers, Chairman
Thomas E. Wright, Commissioner
Shari Feist Albrecht, Commissioner

Sam Brownback, Governor

November 06, 2013

Jesse Middagh
HERMAN L. LOEB, LLC
PO BOX 838
LAWRENCEVILLE, IL 62439

Re: ACO1
API 15-119-21344-00-00
COOLHAND 1-26
NW/4 Sec.26-33S-26W
Meade County, Kansas

Dear Production Department:

We are herewith requesting that the Well Completion Form ACO-1 and attached information for the subject well be held confidential for a period of two years.

Should you have any questions or need additional information regarding subject well, please contact our office.

Respectfully,
Jesse Middagh