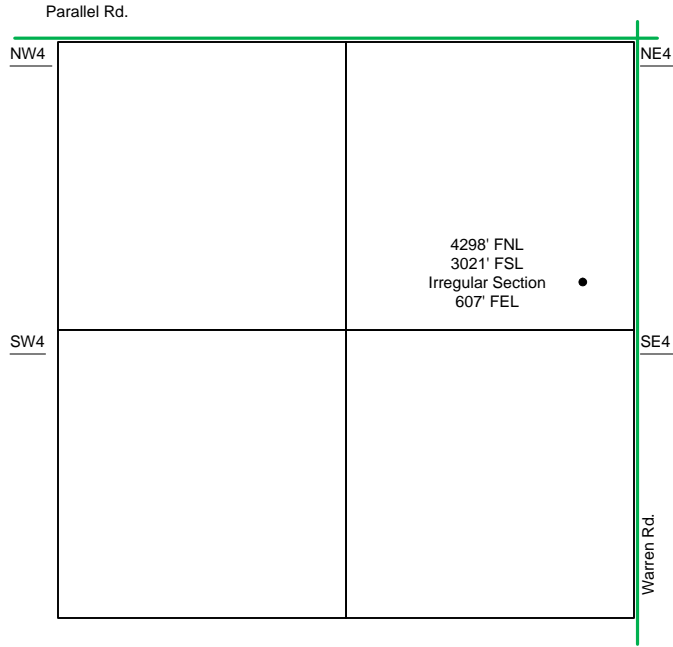
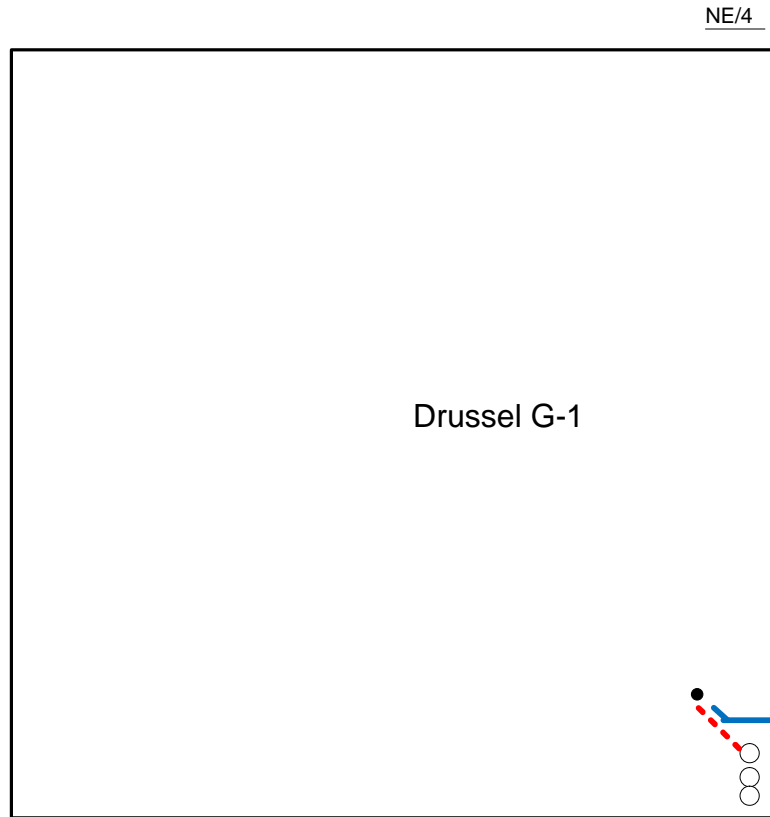


Proposed Plan of Construction  
 Drussel G-1  
 Sec 4 T26S-R33W  
 Finney County, KS



Sec 4 - T26S - R33W



Proposed Details of  
 NE/4 Sec 4 -T26S -R33W

Note-Drawing **Not** to Scale

Proposed Site Diagram  
 Drussel G-1  
 September 10, 2013

