



DRILL STEM TEST REPORT

Prepared For: **Brinker Trust**

216 S. Marshall
Glen Elder KS 67446

ATTN: Richard Bell

Transue #26-5

26-9s-26w Sheridan,KS

Start Date: 2013.08.15 @ 06:30:00

End Date: 2013.08.15 @ 11:55:00

Job Ticket #: 52727 DST #: 1

Trilobite Testing, Inc
PO Box 362 Hays, KS 67601
ph: 785-625-4778 fax: 785-625-5620

Printed: 2013.08.19 @ 14:22:45

Brinker Trust
26-9s-26w Sheridan,KS
Transue #26-5
DST # 1
LKC C-D
2013.08.15



**TRILOBITE
TESTING, INC.**

DRILL STEM TEST REPORT

Brinker Trust
216 S. Marshall
Glen Elder KS 67446
ATTN: Richard Bell

26-9s-26w Sheridan,KS
Transue #26-5
Job Ticket: 52727 **DST#: 1**
Test Start: 2013.08.15 @ 06:30:00

GENERAL INFORMATION:

Formation: **LKC C-D**
Deviated: No Whipstock: ft (KB)
Time Tool Opened: 08:11:30
Time Test Ended: 11:55:00
Interval: 3911.00 ft (KB) To 3950.00 ft (KB) (TVD)
Total Depth: 3950.00 ft (KB) (TVD)
Hole Diameter: 7.88 inches Hole Condition: Good
Test Type: Conventional Bottom Hole (Initial)
Tester: Chuck Kreuzer Jr.
Unit No: 61
Reference Elevations: 2630.00 ft (KB)
2625.00 ft (CF)
KB to GR/CF: 5.00 ft

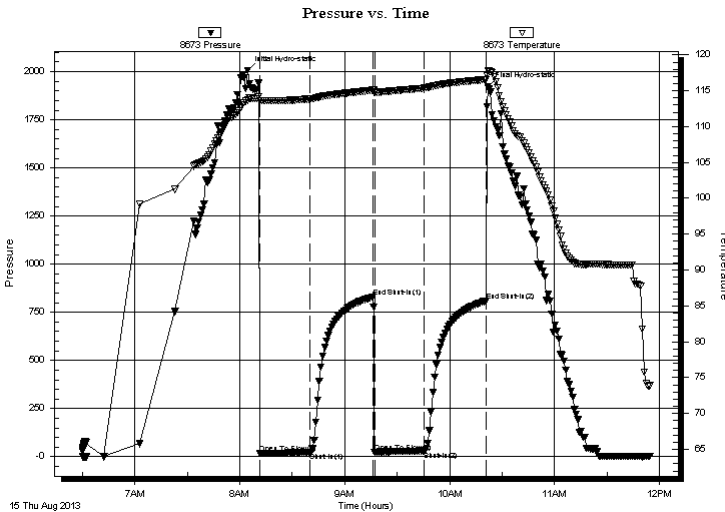
Serial #: 8673

Inside

Press @ Run Depth: 30.25 psig @ 3915.00 ft (KB) Capacity: 8000.00 psig
Start Date: 2013.08.15 End Date: 2013.08.15 Last Calib.: 2013.08.15
Start Time: 06:30:01 End Time: 11:55:00 Time On Btm: 2013.08.15 @ 08:04:30
Time Off Btm: 2013.08.15 @ 10:22:00

TEST COMMENT: IF: Weak blow, Died in 13 mins.-----Had 5 ft. of fill
IS: No blow back
FF: No blow
FS: No blow back

PRESSURE SUMMARY



| Time (Min.) | Pressure (psig) | Temp (deg F) | Annotation |
|-------------|-----------------|--------------|----------------------|
| 0 | 2006.45 | 113.68 | Initial Hydro-static |
| 7 | 17.14 | 113.58 | Open To Flow (1) |
| 36 | 21.96 | 113.87 | Shut-In(1) |
| 72 | 829.79 | 115.09 | End Shut-In(1) |
| 73 | 24.84 | 114.81 | Open To Flow (2) |
| 101 | 30.25 | 115.37 | Shut-In(2) |
| 137 | 810.40 | 116.58 | End Shut-In(2) |
| 138 | 1922.76 | 117.84 | Final Hydro-static |

Recovery

| Length (ft) | Description | Volume (bbl) |
|-------------|-------------|--------------|
| 20.00 | mud-100%m | 0.10 |
| | | |
| | | |
| | | |
| | | |

Gas Rates

| Choke (inches) | Pressure (psig) | Gas Rate (Mcf/d) |
|----------------|-----------------|------------------|
| | | |



**TRILOBITE
TESTING, INC.**

DRILL STEM TEST REPORT

TOOL DIAGRAM

Brinker Trust
216 S. Marshall
Glen Elder KS 67446
ATTN: Richard Bell

26-9s-26w Sheridan,KS
Transue #26-5
Job Ticket: 52727 **DST#: 1**
Test Start: 2013.08.15 @ 06:30:00

Tool Information

| | | | | | |
|---------------------------|--------------------|-----------------------|--------------------------------|------------------------|-------------|
| Drill Pipe: | Length: 3739.00 ft | Diameter: 3.80 inches | Volume: 52.45 bbl | Tool Weight: | 2000.00 lb |
| Heavy Wt. Pipe: | Length: 0.00 ft | Diameter: 0.00 inches | Volume: 0.00 bbl | Weight set on Packer: | 22000.00 lb |
| Drill Collar: | Length: 184.00 ft | Diameter: 2.25 inches | Volume: 0.90 bbl | Weight to Pull Loose: | 50000.00 lb |
| | | | <u>Total Volume: 53.35 bbl</u> | Tool Chased | 2.00 ft |
| Drill Pipe Above KB: | 32.00 ft | | | String Weight: Initial | 44000.00 lb |
| Depth to Top Packer: | 3911.00 ft | | | Final | 44000.00 lb |
| Depth to Bottom Packer: | ft | | | | |
| Interval between Packers: | 39.00 ft | | | | |
| Tool Length: | 59.00 ft | | | | |
| Number of Packers: | 2 | Diameter: 6.75 inches | | | |

Tool Comments:

| Tool Description | Length (ft) | Serial No. | Position | Depth (ft) | Accum. Lengths |
|-------------------------|--------------------|-------------------|-----------------|-------------------|-----------------------|
|-------------------------|--------------------|-------------------|-----------------|-------------------|-----------------------|

| | | | | | |
|-----------------|-------|------|---------|---------|-------------------------------|
| Shut In Tool | 5.00 | | | 3896.00 | |
| Hydraulic tool | 5.00 | | | 3901.00 | |
| Packer | 5.00 | | | 3906.00 | 20.00 Bottom Of Top Packer |
| Packer | 5.00 | | | 3911.00 | |
| Stubb | 1.00 | | | 3912.00 | |
| Perforations | 2.00 | | | 3914.00 | |
| Change Over Sub | 1.00 | | | 3915.00 | |
| Recorder | 0.00 | 8673 | Inside | 3915.00 | |
| Recorder | 0.00 | 8651 | Outside | 3915.00 | |
| Drill Pipe | 31.00 | | | 3946.00 | |
| Change Over Sub | 1.00 | | | 3947.00 | |
| Bullnose | 3.00 | | | 3950.00 | 39.00 Bottom Packers & Anchor |

Total Tool Length: 59.00



**TRILOBITE
TESTING, INC.**

DRILL STEM TEST REPORT

FLUID SUMMARY

Brinker Trust
216 S. Marshall
Glen Elder KS 67446
ATTN: Richard Bell

26-9s-26w Sheridan,KS
Transue #26-5
Job Ticket: 52727 **DST#: 1**
Test Start: 2013.08.15 @ 06:30:00

Mud and Cushion Information

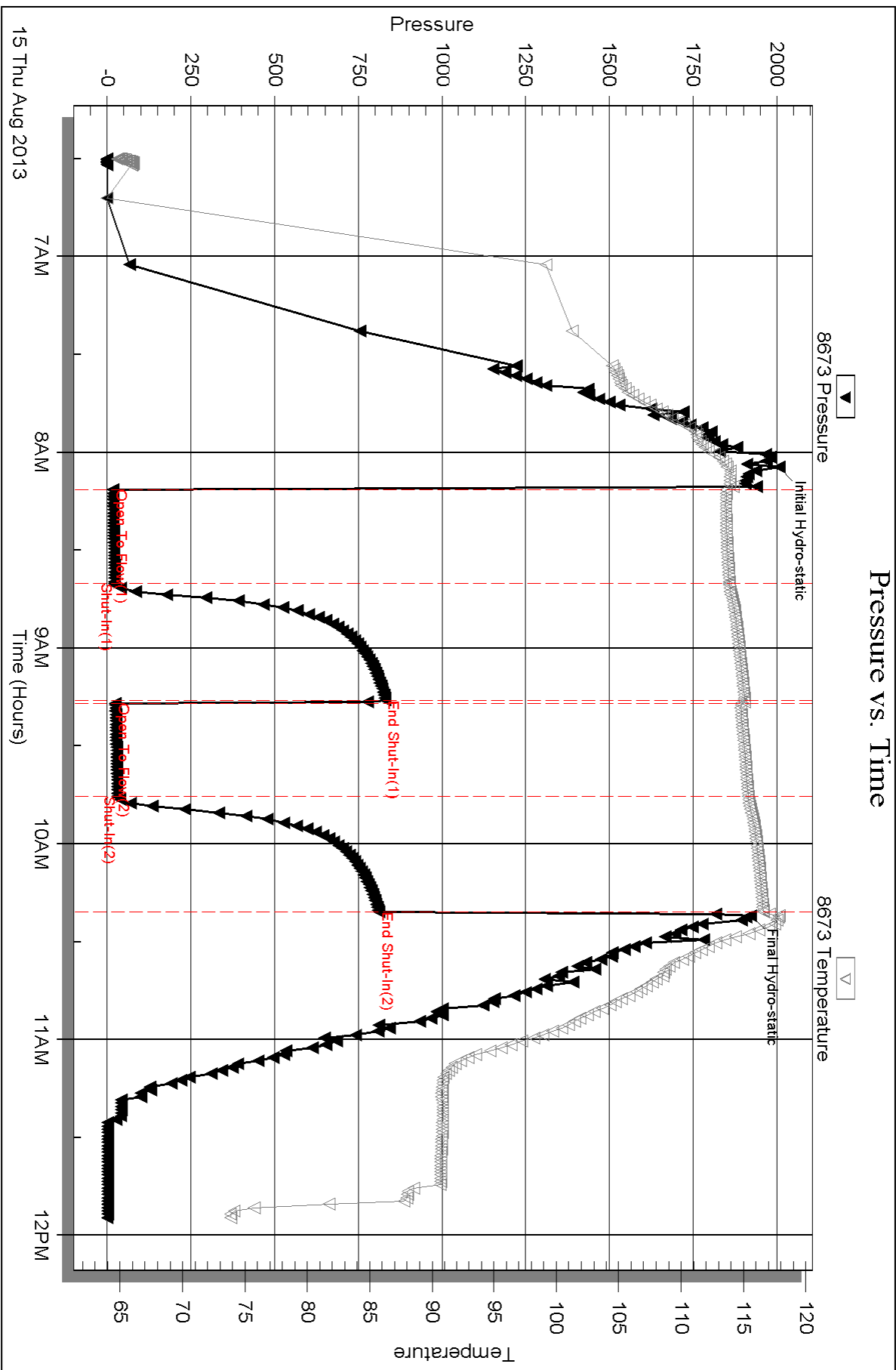
| | | | |
|----------------------------------|----------------------------|-----------------|---------|
| Mud Type: Gel Chem | Cushion Type: | Oil API: | deg API |
| Mud Weight: 9.00 lb/gal | Cushion Length: ft | Water Salinity: | ppm |
| Viscosity: 60.00 sec/qt | Cushion Volume: bbl | | |
| Water Loss: 6.39 in ³ | Gas Cushion Type: | | |
| Resistivity: ohm.m | Gas Cushion Pressure: psig | | |
| Salinity: 1000.00 ppm | | | |
| Filter Cake: 2.00 inches | | | |

Recovery Information

Recovery Table

| Length ft | Description | Volume bbl |
|--------------|-------------|---------------|
| 20.00 | mud-100%m | 0.098 |

Total Length: 20.00 ft Total Volume: 0.098 bbl
 Num Fluid Samples: 0 Num Gas Bombs: 0 Serial #:
 Laboratory Name: Laboratory Location:
 Recovery Comments:

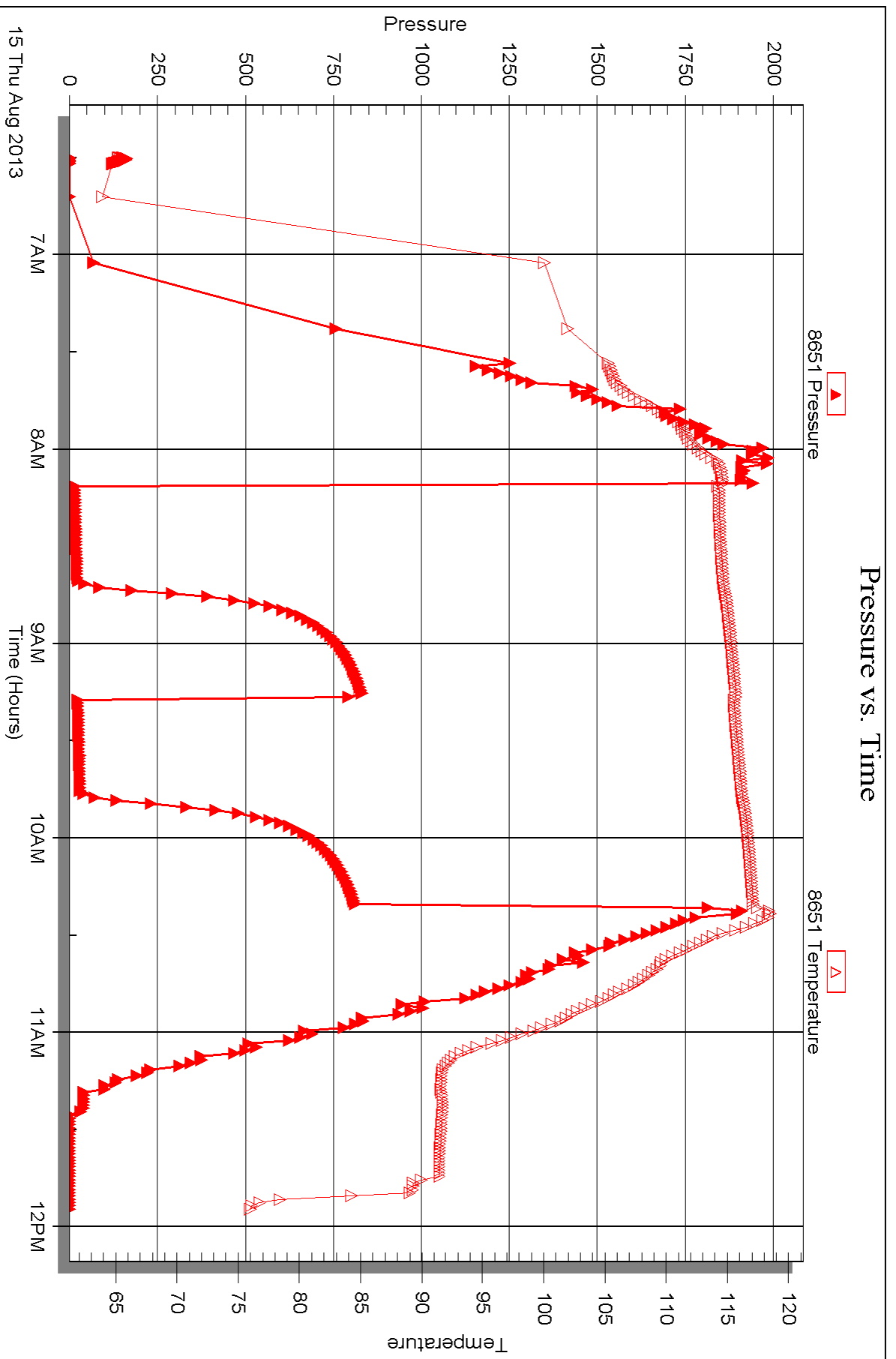


Serial #: 8651

Outside Brinker Trust

Transue #26-5

DST Test Number: 1





DRILL STEM TEST REPORT

Prepared For: **Brinker Trust**

216 S. Marshall
Glen Elder KS 67446

ATTN: Richard Bell

Transue #26-5

26-9s-26w Sheridan,KS

Start Date: 2013.08.16 @ 04:15:00

End Date: 2013.08.16 @ 09:04:30

Job Ticket #: 52728 DST #: 2

Trilobite Testing, Inc
PO Box 362 Hays, KS 67601
ph: 785-625-4778 fax: 785-625-5620

Printed: 2013.08.19 @ 14:20:49

Brinker Trust
26-9s-26w Sheridan,KS
Transue #26-5
DST # 2
LKC J
2013.08.16



TRILOBITE TESTING, INC.

DRILL STEM TEST REPORT

Brinker Trust
 216 S. Marshall
 Glen Elder KS 67446
 ATTN: Richard Bell

26-9s-26w Sheridan,KS
Transue #26-5
 Job Ticket: 52728 **DST#: 2**
 Test Start: 2013.08.16 @ 04:15:00

GENERAL INFORMATION:

Formation: **LKC J**
 Deviated: No Whipstock: ft (KB)
 Test Type: Conventional Bottom Hole (Reset)
 Time Tool Opened: 06:15:00
 Tester: Chuck Kreutzer Jr.
 Time Test Ended: 09:04:30
 Unit No: 61
Interval: 4054.00 ft (KB) To 4080.00 ft (KB) (TVD)
 Reference Elevations: 2630.00 ft (KB)
 Total Depth: 4080.00 ft (KB) (TVD)
 2625.00 ft (CF)
 Hole Diameter: 7.88 inches
 Hole Condition: Good
 KB to GR/CF: 5.00 ft

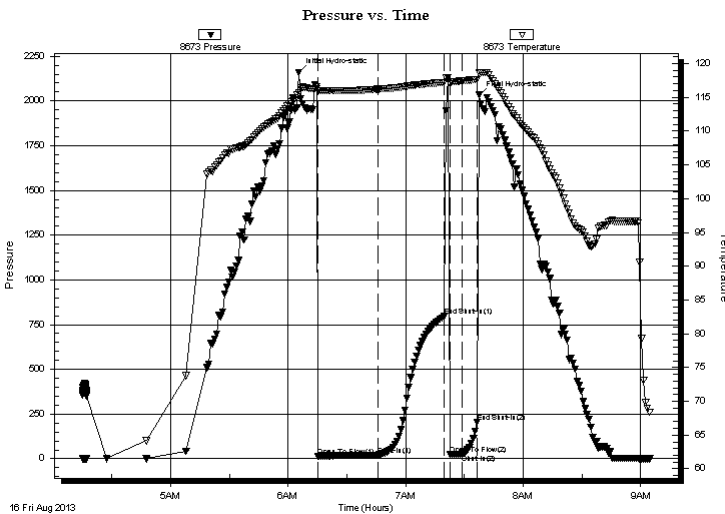
Serial #: 8673

Inside

Press @ RunDepth: 25.67 psig @ 4057.00 ft (KB) Capacity: 8000.00 psig
 Start Date: 2013.08.16 End Date: 2013.08.16 Last Calib.: 2013.08.16
 Start Time: 04:15:01 End Time: 09:04:30 Time On Btm: 2013.08.16 @ 06:05:30
 Time Off Btm: 2013.08.16 @ 07:37:30

TEST COMMENT: IF: Weak blow, Dead in 5 mins.
 IS: No blow back
 FF: Flushed tool Weak blow dead in 30 sec.
 FS: No blow back

PRESSURE SUMMARY



| Time (Min.) | Pressure (psig) | Temp (deg F) | Annotation |
|-------------|-----------------|--------------|----------------------|
| 0 | 2159.64 | 115.64 | Initial Hydro-static |
| 10 | 15.74 | 116.01 | Open To Flow (1) |
| 41 | 20.49 | 116.21 | Shut-In(1) |
| 74 | 796.08 | 117.23 | End Shut-In(1) |
| 77 | 25.07 | 116.98 | Open To Flow (2) |
| 83 | 25.67 | 117.43 | Shut-In(2) |
| 91 | 202.77 | 117.68 | End Shut-In(2) |
| 92 | 2032.08 | 118.60 | Final Hydro-static |

Recovery

| Length (ft) | Description | Volume (bbl) |
|-------------|-------------|--------------|
| 20.00 | mud-100%m | 0.10 |
| | | |
| | | |
| | | |
| | | |

* Recovery from multiple tests

Gas Rates

| Choke (inches) | Pressure (psig) | Gas Rate (Mcf/d) |
|----------------|-----------------|------------------|
| | | |



**TRILOBITE
TESTING, INC.**

DRILL STEM TEST REPORT

TOOL DIAGRAM

Brinker Trust
216 S. Marshall
Glen Elder KS 67446
ATTN: Richard Bell

26-9s-26w Sheridan,KS
Transue #26-5
Job Ticket: 52728 **DST#: 2**
Test Start: 2013.08.16 @ 04:15:00

Tool Information

| | | | | | |
|---------------------------|--------------------|-----------------------|--------------------------------|------------------------|-------------|
| Drill Pipe: | Length: 3867.00 ft | Diameter: 3.80 inches | Volume: 54.24 bbl | Tool Weight: | 2000.00 lb |
| Heavy Wt. Pipe: | Length: 0.00 ft | Diameter: 0.00 inches | Volume: 0.00 bbl | Weight set on Packer: | 20000.00 lb |
| Drill Collar: | Length: 184.00 ft | Diameter: 2.25 inches | Volume: 0.90 bbl | Weight to Pull Loose: | 50000.00 lb |
| | | | <u>Total Volume: 55.14 bbl</u> | Tool Chased | 2.00 ft |
| Drill Pipe Above KB: | 17.00 ft | | | String Weight: Initial | 44000.00 lb |
| Depth to Top Packer: | 4054.00 ft | | | Final | 44000.00 lb |
| Depth to Bottom Packer: | ft | | | | |
| Interval between Packers: | 26.00 ft | | | | |
| Tool Length: | 46.00 ft | | | | |
| Number of Packers: | 2 | Diameter: 6.75 inches | | | |

Tool Comments:

| Tool Description | Length (ft) | Serial No. | Position | Depth (ft) | Accum. Lengths |
|-------------------------|--------------------|-------------------|-----------------|-------------------|-----------------------|
|-------------------------|--------------------|-------------------|-----------------|-------------------|-----------------------|

| | | | | | |
|---------------------------|--------------|------|---------|---------|------------------------------------|
| Shut In Tool | 5.00 | | | 4039.00 | |
| Hydraulic tool | 5.00 | | | 4044.00 | |
| Packer | 5.00 | | | 4049.00 | 20.00 Bottom Of Top Packer |
| Packer | 5.00 | | | 4054.00 | |
| Stubb | 1.00 | | | 4055.00 | |
| Perforations | 2.00 | | | 4057.00 | |
| Recorder | 0.00 | 8673 | Inside | 4057.00 | |
| Recorder | 0.00 | 8651 | Outside | 4057.00 | |
| Perforations | 20.00 | | | 4077.00 | |
| Bullnose | 3.00 | | | 4080.00 | 26.00 Bottom Packers & Anchor |
| Total Tool Length: | 46.00 | | | | |



**TRILOBITE
TESTING, INC.**

DRILL STEM TEST REPORT

FLUID SUMMARY

Brinker Trust
216 S. Marshall
Glen Elder KS 67446
ATTN: Richard Bell

26-9s-26w Sheridan,KS
Transue #26-5
Job Ticket: 52728 **DST#: 2**
Test Start: 2013.08.16 @ 04:15:00

Mud and Cushion Information

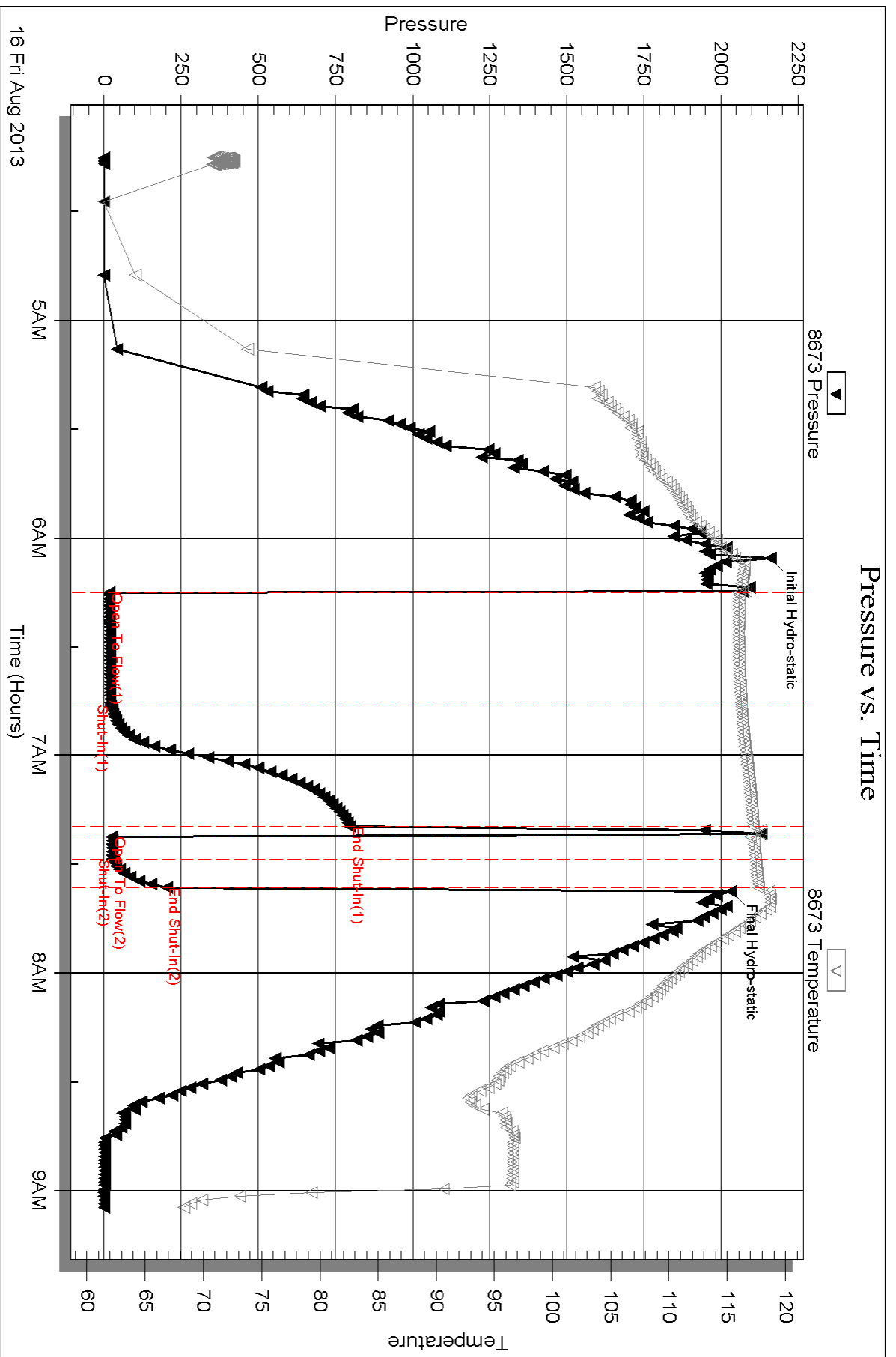
| | | | |
|----------------------------------|----------------------------|-----------------|---------|
| Mud Type: Gel Chem | Cushion Type: | Oil API: | deg API |
| Mud Weight: 9.00 lb/gal | Cushion Length: ft | Water Salinity: | ppm |
| Viscosity: 60.00 sec/qt | Cushion Volume: bbl | | |
| Water Loss: 6.38 in ³ | Gas Cushion Type: | | |
| Resistivity: ohm.m | Gas Cushion Pressure: psig | | |
| Salinity: 1000.00 ppm | | | |
| Filter Cake: 2.00 inches | | | |

Recovery Information

Recovery Table

| Length ft | Description | Volume bbl |
|--------------|-------------|---------------|
| 20.00 | mud-100%m | 0.098 |

Total Length: 20.00 ft Total Volume: 0.098 bbl
 Num Fluid Samples: 0 Num Gas Bombs: 0 Serial #:
 Laboratory Name: Laboratory Location:
 Recovery Comments:

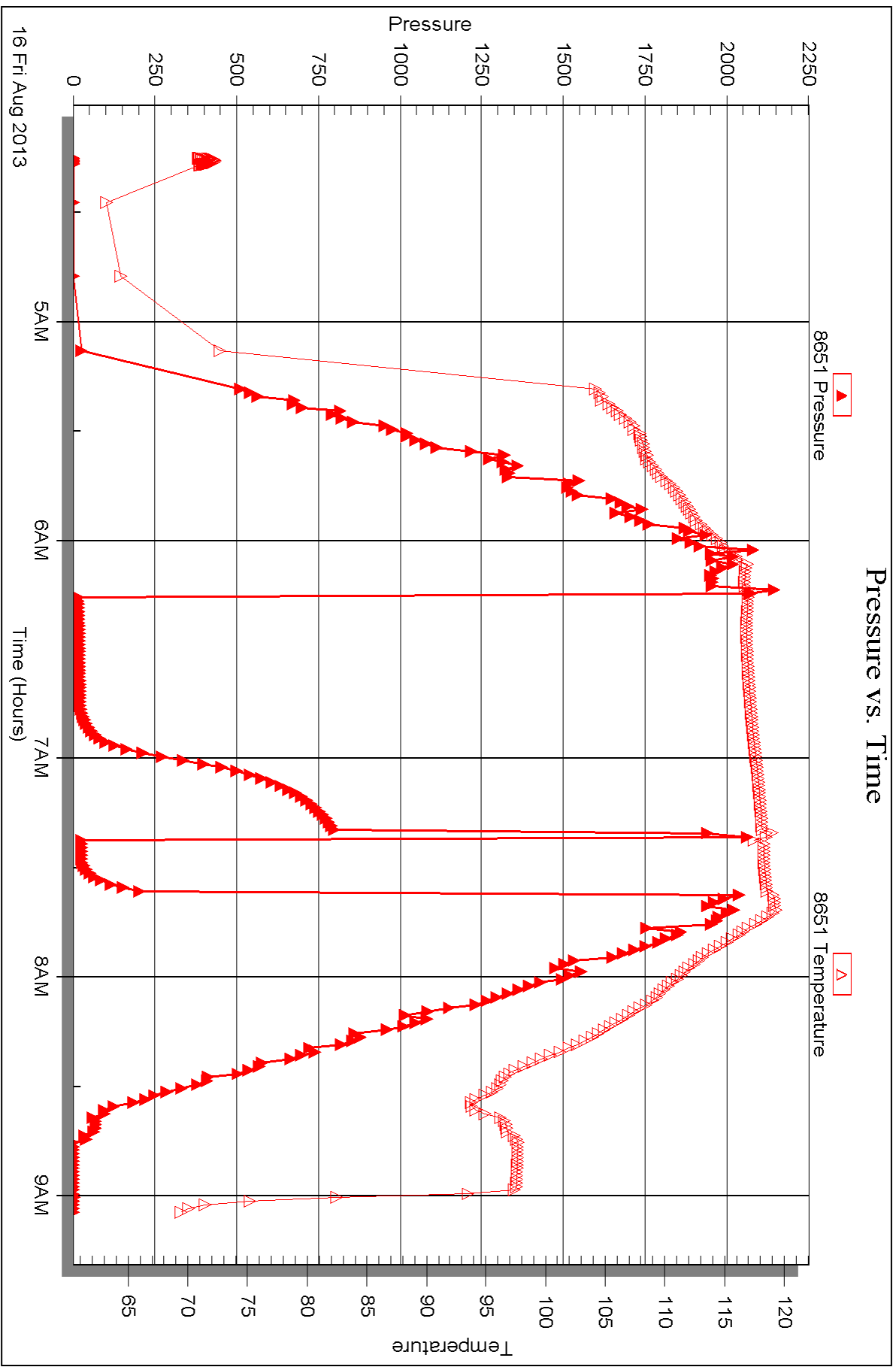


Serial #: 8651

Outside Brinker Trust

Transue #26-5

DST Test Number: 2





DRILL STEM TEST REPORT

Prepared For: **Brinker Trust**

216 S. Marshall
Glen Elder KS 67446

ATTN: Richard Bell

Transue #26-5

26-9s-26w Sheridan,KS

Start Date: 2013.08.16 @ 16:31:00

End Date: 2013.08.16 @ 21:18:30

Job Ticket #: 52729 DST #: 3

Trilobite Testing, Inc
PO Box 362 Hays, KS 67601
ph: 785-625-4778 fax: 785-625-5620

Printed: 2013.08.19 @ 14:16:53

Brinker Trust
26-9s-26w Sheridan,KS
Transue #26-5
DST # 3
LKC-K
2013.08.16



TRILOBITE TESTING, INC.

DRILL STEM TEST REPORT

Brinker Trust
 216 S. Marshall
 Glen Elder KS 67446
 ATTN: Richard Bell

26-9s-26w Sheridan,KS
Transue #26-5
 Job Ticket: 52729 **DST#: 3**
 Test Start: 2013.08.16 @ 16:31:00

GENERAL INFORMATION:

Formation: **LKC-K**
 Deviated: No Whipstock: ft (KB)
 Test Type: Conventional Bottom Hole (Reset)
 Time Tool Opened: 18:15:30
 Tester: Chuck Kreutzer Jr.
 Time Test Ended: 21:18:30
 Unit No: 61
Interval: 4078.00 ft (KB) To 4104.00 ft (KB) (TVD)
 Reference Elevations: 2630.00 ft (KB)
 Total Depth: 4104.00 ft (KB) (TVD)
 2625.00 ft (CF)
 Hole Diameter: 7.88 inches
 Hole Condition: Good
 KB to GR/CF: 5.00 ft

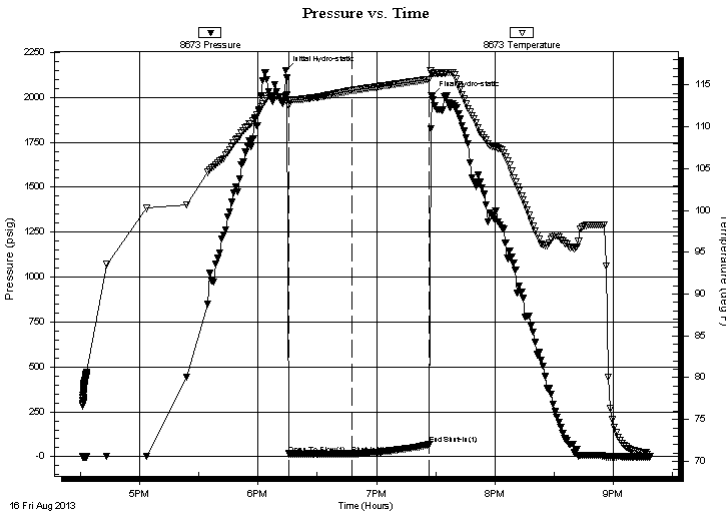
Serial #: 8673

Inside

Press @ Run Depth: 15.73 psig @ 4081.00 ft (KB) Capacity: 8000.00 psig
 Start Date: 2013.08.16 End Date: 2013.08.16 Last Calib.: 2013.08.16
 Start Time: 16:31:01 End Time: 21:18:30 Time On Btm: 2013.08.16 @ 18:14:00
 Time Off Btm: 2013.08.16 @ 19:28:00

TEST COMMENT: IF: Weak blow, Dead in 5 mins.
 IS: No blow back
 -----Pulled tool--

PRESSURE SUMMARY



| Time (Min.) | Pressure (psig) | Temp (deg F) | Annotation |
|-------------|-----------------|--------------|----------------------|
| 0 | 2150.24 | 113.69 | Initial Hydro-static |
| 2 | 16.02 | 112.53 | Open To Flow (1) |
| 34 | 15.73 | 114.35 | Shut-In(1) |
| 73 | 67.06 | 115.69 | End Shut-In(1) |
| 74 | 2007.43 | 116.40 | Final Hydro-static |

Recovery

| Length (ft) | Description | Volume (bbl) |
|-------------|-------------|--------------|
| 5.00 | mud-100%m | 0.02 |
| | | |
| | | |
| | | |
| | | |

* Recovery from multiple tests

Gas Rates

| Choke (inches) | Pressure (psig) | Gas Rate (Mcf/d) |
|----------------|-----------------|------------------|
| | | |



**TRILOBITE
TESTING, INC.**

DRILL STEM TEST REPORT

FLUID SUMMARY

Brinker Trust
216 S. Marshall
Glen Elder KS 67446
ATTN: Richard Bell

26-9s-26w Sheridan,KS
Transue #26-5
Job Ticket: 52729 **DST#: 3**
Test Start: 2013.08.16 @ 16:31:00

Mud and Cushion Information

| | | | |
|----------------------------------|----------------------------|-----------------|---------|
| Mud Type: Gel Chem | Cushion Type: | Oil API: | deg API |
| Mud Weight: 10.00 lb/gal | Cushion Length: ft | Water Salinity: | ppm |
| Viscosity: 60.00 sec/qt | Cushion Volume: bbl | | |
| Water Loss: 7.99 in ³ | Gas Cushion Type: | | |
| Resistivity: ohm.m | Gas Cushion Pressure: psig | | |
| Salinity: 1500.00 ppm | | | |
| Filter Cake: 2.00 inches | | | |

Recovery Information

Recovery Table

| Length ft | Description | Volume bbl |
|--------------|-------------|---------------|
| 5.00 | mud-100%m | 0.025 |

Total Length: 5.00 ft Total Volume: 0.025 bbl
 Num Fluid Samples: 0 Num Gas Bombs: 0 Serial #:
 Laboratory Name: Laboratory Location:
 Recovery Comments:

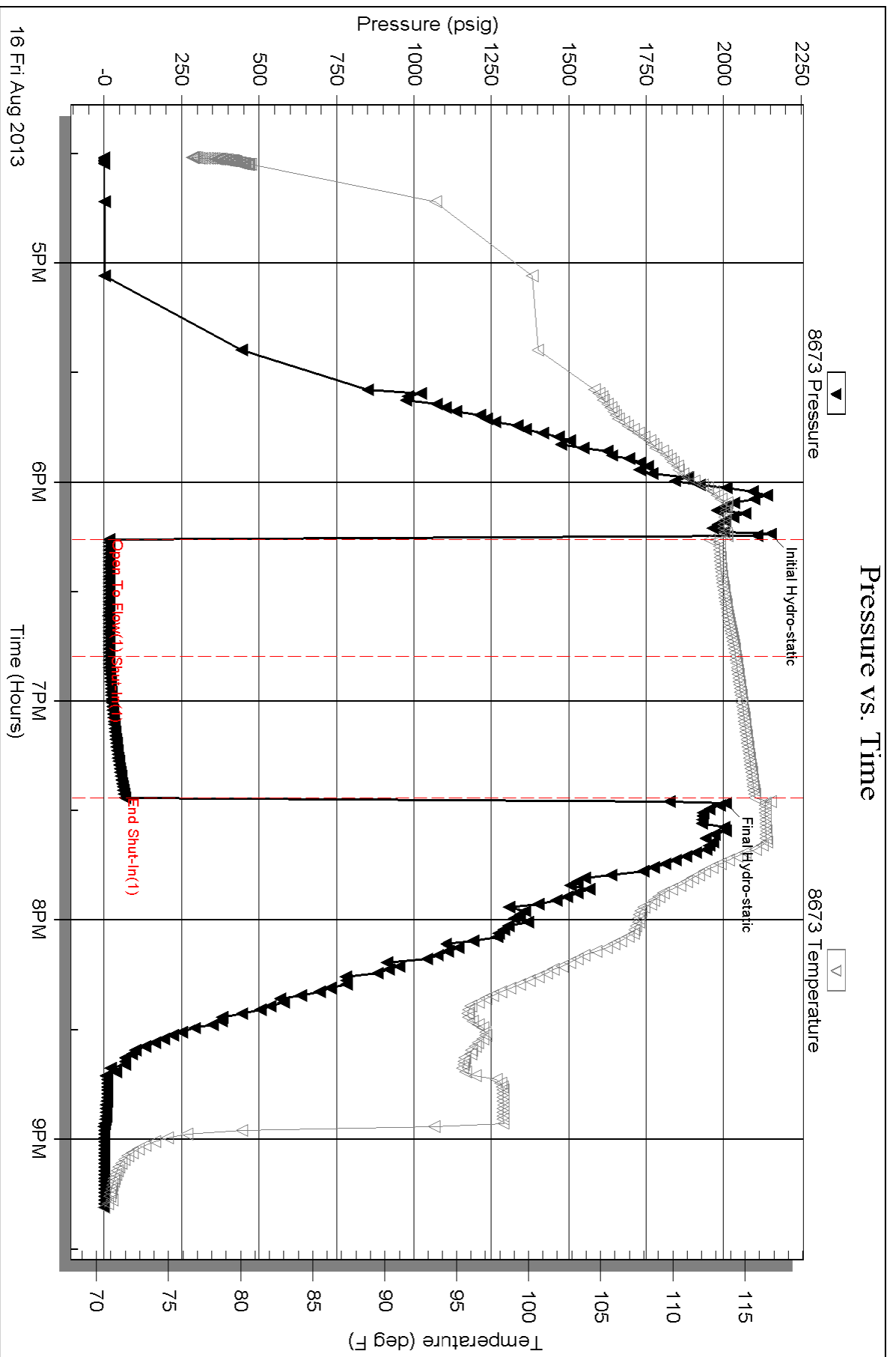
Serial #: 8673

Inside

Brinker Trust

Transue #26-5

DST Test Number: 3

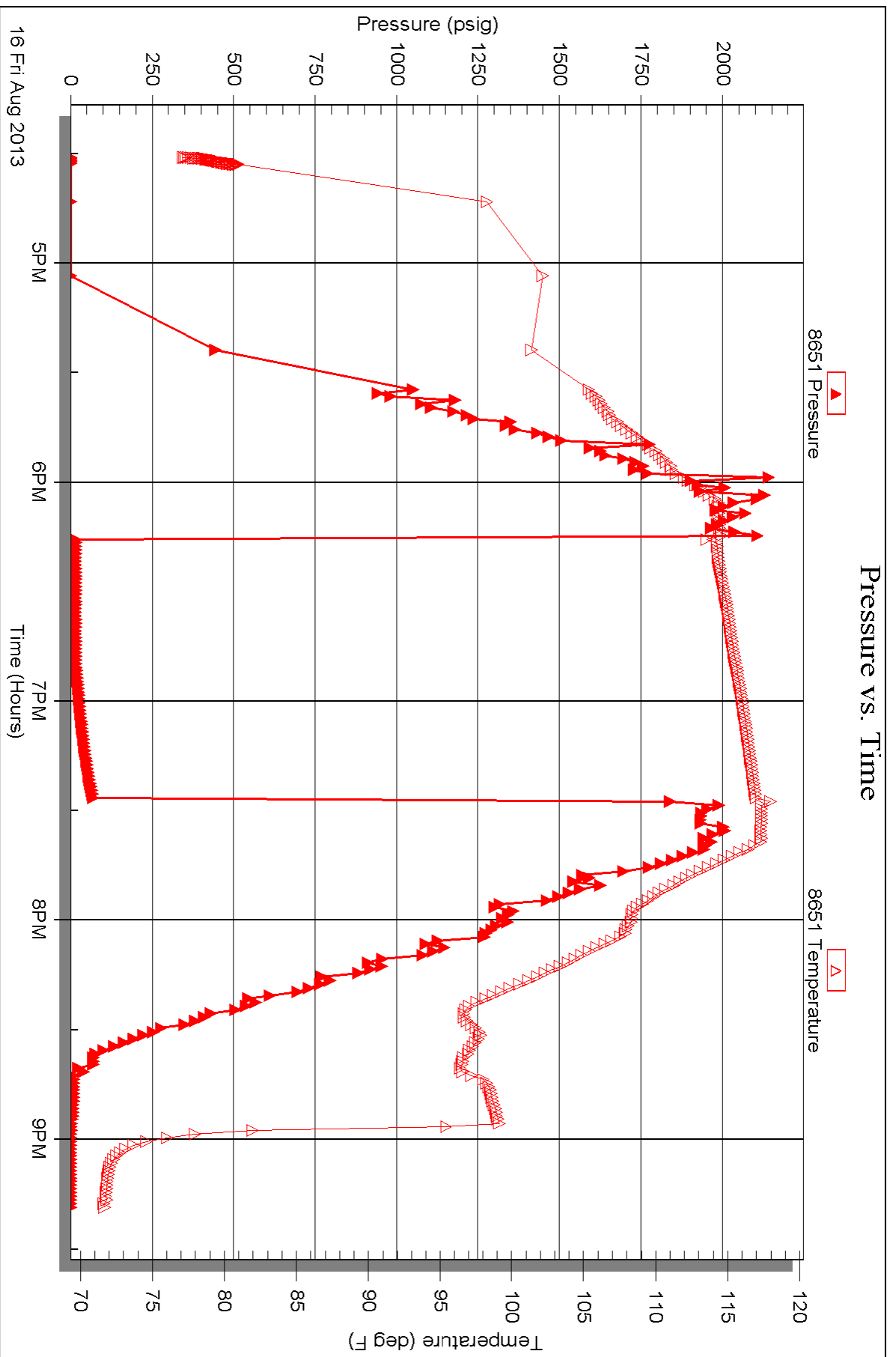


Serial #: 8651

Outside Brinker Trust

Transue #26-5

DST Test Number: 3





TRILOBITE TESTING INC.

1515 Commerce Parkway • Hays, Kansas 67601

Test Ticket

NO. 52727

Well Name & No. Transue #265 Test No. 1 Date 8-15-2013
 Company Brinker Enterprises, LLC Elevation 2630 KB 2625 GL
 Address 216 S Marshall St. Glen Elder KS. 67446
 Co. Rep / Geo. Richard Bell Rig WW#6
 Location: Sec. 26 Twp. 9S Rge. 26W Co. Steridan State KS

Interval Tested 3911 3950 Zone Tested LRL-C, D
 Anchor Length 39 Drill Pipe Run _____ Mud Wt. 8.9
 Top Packer Depth 3906 Drill Collars Run 184 Vis 60
 Bottom Packer Depth 3911 Wt. Pipe Run -0- WL 6.4
 Total Depth 3950 Chlorides 1000 ppm System LCM 2#

Blow Description IF: Weak blow dead in 13 mins. Had 5 ft of fill
ISF: No blow back
FI: No blow
FSI: No blow back

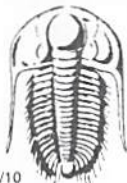
| Rec | Feet of | %gas | %oil | %water | %mud |
|-----------|------------|------|------|--------|------------|
| <u>20</u> | <u>mud</u> | | | | <u>100</u> |
| _____ | _____ | | | | |
| _____ | _____ | | | | |
| _____ | _____ | | | | |

Rec Total 20 BHT 115 Gravity _____ API RW _____ @ _____ °F Chlorides _____ ppm

(A) Initial Hydrostatic 2006 Test 1150 T-On Location 5:10
 (B) First Initial Flow 17 Jars _____ T-Started 6:30
 (C) First Final Flow 22 Safety Joint _____ T-Open 8:11
 (D) Initial Shut-In 830 Circ Sub _____ T-Pulled 10:15
 (E) Second Initial Flow 25 Hourly Standby _____ T-Out 11:55
 (F) Second Final Flow 30 Mileage 68x2 = 136x1.55 210.80 Comments _____
 (G) Final Shut-In 810 Sampler _____
 (H) Final Hydrostatic 1923 Straddle _____ Ruined Shale Packer _____
 Shale Packer _____ Ruined Packer _____
 Extra Packer _____ Extra Copies _____
 Initial Open 30 Extra Recorder _____ Sub Total 0
 Initial Shut-In 30 Day Standby _____ Total 1360.80
 Final Flow 30 Accessibility _____ MP/DST Disc't _____
 Final Shut-In 30 Sub Total 1360.80

Approved By _____ Our Representative Chuck Koke

Trilobite Testing Inc. shall not be liable for damaged of any kind of the property or personnel of the one for whom a test is made, or for any loss suffered or sustained, directly or indirectly, through the use of its equipment, or its statements or opinion concerning the results of any test, tools lost or damaged in the hole shall be paid for at cost by the party for whom the test is made.



TRILOBITE TESTING INC.

1515 Commerce Parkway • Hays, Kansas 67601

Test Ticket

NO. 52728

Well Name & No. Tranue # 26-5 Test No. 2 Date 8-16-2013
 Company Brinker Enterprises, LLC Elevation 2630 KB 2625 GL
 Address 216 S. Marshall St. Glen Elder KS 67446
 Co. Rep / Geo. Richard Bell Rig WW#6
 Location: Sec. 26 Twp. 9S Rge. 26W Co. Sheridan State Ks

Interval Tested 4054 4080 Zone Tested LKC-J
 Anchor Length 26 Drill Pipe Run 3867 Mud Wt. 8.4
 Top Packer Depth 4049 Drill Collars Run 184 Vis 60
 Bottom Packer Depth 4054 Wt. Pipe Run 0 WL 6.4
 Total Depth 4080 Chlorides 1000 ppm System LCM 2#

Blow Description IF: Weak blow, Dead in 5 mins.

ISJ: No blow back

FF: Flushed tool, Weak blow Dead in 30 secs.

FSJ: No blow back

| Rec | Feet of | %gas | %oil | %water | %mud |
|-----------|------------|------|------|--------|------------|
| <u>20</u> | <u>mud</u> | | | | <u>100</u> |
| | | | | | |
| | | | | | |
| | | | | | |

Rec Total 20 BHT 2160 Gravity 1250 API RW 210.80 @ 210.80 ° F Chlorides 1000 ppm

(A) Initial Hydrostatic 2160 Test 1250 T-On Location 4:10
 (B) First Initial Flow 16 Jars 4:15
 (C) First Final Flow 20 Safety Joint 6:15
 (D) Initial Shut-In 796 Circ Sub 7:35
 (E) Second Initial Flow 25 Hourly Standby 9:04
 (F) Second Final Flow 26 Mileage 68x2=136x1.55 210.80
 (G) Final Shut-In 208 Sampler
 (H) Final Hydrostatic 2032 Straddle
 Shale Packer
 Shale Packer
 Extra Packer
 Extra Recorder
 Day Standby
 Accessibility

Initial Open 30
 Initial Shut-In 30
 Final Flow 5
 Final Shut-In 5

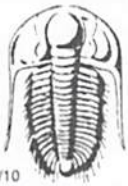
Sub Total 1460.80

Comments _____
 Ruined Shale Packer
 Ruined Packer
 Extra Copies
 Sub Total 0
 Total 1460.80
 MP/DST Disc't _____

Approved By _____

Our Representative Chuck [Signature]

Trilobite Testing Inc. shall not be liable for damaged of any kind of the property or personnel of the one for whom a test is made, or for any loss suffered or sustained, directly or indirectly, through the use of its equipment, or its statements or opinion concerning the results of any test, tools lost or damaged in the hole shall be paid for at cost by the party for whom the test is made.



TRILOBITE TESTING INC.

1515 Commerce Parkway • Hays, Kansas 67601

Test Ticket

NO. 52729

4/10

Well Name & No. Transue #26-5 Test No. 3 Date 8-18-2013
 Company Brinker Enterprises, LLC Elevation 2630 KB 2625 GL
 Address 216 S. Marsh all St. Glen Elder
 Co. Rep / Geo. Richard Bell Rig WWT#6
 Location: Sec. 26 Twp. 9S Rge. 26W Co. Sheridan State KS

Interval Tested 4078 4104 Zone Tested LKC-K
 Anchor Length 26 Drill Pipe Run 3848 Mud Wt. 9.5
 Top Packer Depth 4073 Drill Collars Run 184 Vis 60
 Bottom Packer Depth 4078 Wt. Pipe Run - 0- WL 8.0
 Total Depth 4104 Chlorides 1500 ppm System LCM 2#

Blow Description IF: Weak blow dead in 5 mins
ISI: No blow back

| Rec | Feet of | %gas | %oil | %water | %mud |
|----------|------------|------|------|--------|------------|
| <u>5</u> | <u>mud</u> | | | | <u>100</u> |
| Rec | Feet of | %gas | %oil | %water | %mud |
| Rec | Feet of | %gas | %oil | %water | %mud |
| Rec | Feet of | %gas | %oil | %water | %mud |
| Rec | Feet of | %gas | %oil | %water | %mud |

Rec Total 5 BHT 115 Gravity _____ API RW _____ @ _____ °F Chlorides _____ ppm

(A) Initial Hydrostatic 2150 Test 1250 T-On Location 18:30
 (B) First Initial Flow 16 Jars T-Started 16:31
 (C) First Final Flow 16 Safety Joint T-Open 18:15
 (D) Initial Shut-In 67 Circ Sub T-Pulled 19:10
 (E) Second Initial Flow _____ Hourly Standby T-Out 21:18
 (F) Second Final Flow _____ Mileage 6842 = 13641.55 210.80 Comments _____
 (G) Final Shut-In _____ Sampler _____
 (H) Final Hydrostatic 2007 Straddle _____ Ruined Shale Packer _____
 Shale Packer _____ Ruined Packer _____
 Extra Packer _____ Extra Copies _____
 Initial Open 30 Extra Recorder _____ Sub Total 01460.80
 Initial Shut-In 30 Day Standby _____ Total _____
 Final Flow 0 Accessibility _____ MP/DST Disc't _____
 Final Shut-In 0 Sub Total 1460.80

Approved By _____

Our Representative Chuck Hays

Trilobite Testing Inc. shall not be liable for damaged of any kind of the property or personnel of the one for whom a test is made, or for any loss suffered or sustained, directly or indirectly, through the use of its equipment, or its statements or opinion concerning the results of any test, tools lost or damaged in the hole shall be paid for at cost by the party for whom the test is made.