



DRILL STEM TEST REPORT

Prepared For: **Hartman Oil Co.**

10500 E Berkeley SQ Pkwy
STE 100 Wichita Kansas 67206

ATTN: Derek Patterson

Brooks 1-19

19-05s-22w-Norton

Start Date: 2013.08.24 @ 04:51:00

End Date: 2013.08.24 @ 11:15:30

Job Ticket #: 17549 DST #: 2

Superior Testers Enterprises LLC
PO Box 138 Great Bend KS 67530
1-800-792-6902

Printed: 2013.08.24 @ 21:32:11



DRILL STEM TEST REPORT

Hartman Oil Co.
 10500 E Berkeley SQ Pkw y
 STE 100 Wichita Kansas 67206
 ATTN: Derek Patterson

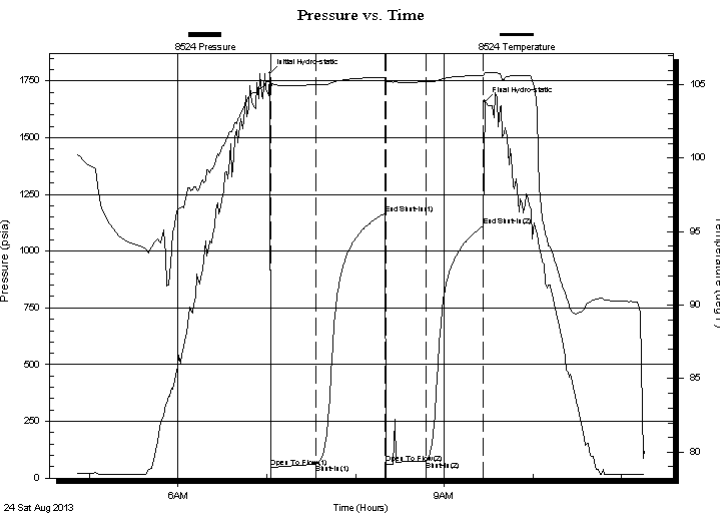
19-05s-22w-Norton
Brooks 1-19
 Job Ticket: 17549 **DST#: 2**
 Test Start: 2013.08.24 @ 04:51:00

GENERAL INFORMATION:

Formation: **Lansing C**
 Deviated: No Whipstock: ft (KB)
 Test Type: Conventional Bottom Hole (Initial)
 Time Tool Opened: 07:02:30 Tester: Dustin Ellis
 Time Test Ended: 11:15:30 Unit No: 3315-Hays-236
 Interval: **3430.00 ft (KB) To 3454.00 ft (KB) (TVD)** Reference Elevations: 2226.00 ft (KB)
 Total Depth: 3454.00 ft (KB) (TVD) 2217.00 ft (CF)
 Hole Diameter: 7.88 inches Hole Condition: Fair KB to GR/CF: 9.00 ft

Serial #: 8524 Inside
 Press @ Run Depth: 74.26 psia @ 3450.00 ft (KB) Capacity: 5000.00 psia
 Start Date: 2013.08.24 End Date: 2013.08.24 Last Calib.: 2013.08.24
 Start Time: 04:51:00 End Time: 11:15:30 Time On Btm: 2013.08.24 @ 07:02:00
 Time Off Btm: 2013.08.24 @ 09:27:30

TEST COMMENT: 1st Open 30 minutes Weak surface blow built to a 1/2 inch.
 1st Shut in 45 minutes No blow back
 2nd Open 30 minutes Dead, Flushed tool weak surface blow though out.
 2nd Shut in 45 minutes No blow back



PRESSURE SUMMARY

Time (Min.)	Pressure (psia)	Temp (deg F)	Annotation
0	1782.62	105.29	Initial Hydro-static
1	45.53	104.70	Open To Flow (1)
31	58.89	105.00	Shut-In(1)
78	1166.14	105.51	End Shut-In(1)
79	65.69	105.18	Open To Flow (2)
106	74.26	105.19	Shut-In(2)
145	1109.36	105.64	End Shut-In(2)
146	1658.89	105.81	Final Hydro-static

Recovery

Length (ft)	Description	Volume (bbl)
66.00	Oil cut mud 10% Oil 90%Mud	0.32

Gas Rates

Choke (inches)	Pressure (psia)	Gas Rate (Mcf/d)



DRILL STEM TEST REPORT

TOOL DIAGRAM

Hartman Oil Co.
 10500 E Berkeley SQ Pkwy
 STE 100 Wichita Kansas 67206
 A T T N : Derek Patterson

19-05s-22w-Norton
Brooks 1-19
 Job Ticket: 17549 **DST#: 2**
 Test Start: 2013.08.24 @ 04:51:00

Tool Information

Drill Pipe:	Length: 3199.00 ft	Diameter: 3.80 inches	Volume: 44.87 bbl	Tool Weight: 2000.00 lb
Heavy Wt. Pipe:	Length: 0.00 ft	Diameter: 0.00 inches	Volume: 0.00 bbl	Weight set on Packer: 20000.00 lb
Drill Collar:	Length: 234.79 ft	Diameter: 2.25 inches	Volume: 1.15 bbl	Weight to Pull Loose: 70000.00 lb
			<u>Total Volume: 46.02 bbl</u>	Tool Chased 0.00 ft
Drill Pipe Above KB:	31.79 ft			String Weight: Initial 58000.00 lb
Depth to Top Packer:	3430.00 ft			Final 58000.00 lb
Depth to Bottom Packer:	ft			
Interval between Packers:	24.00 ft			
Tool Length:	52.00 ft			
Number of Packers:	2	Diameter: 6.75 inches		

Tool Comments:

Tool Description	Length (ft)	Serial No.	Position	Depth (ft)	Accum. Lengths
Shut-In Tool	5.00			3407.00	
Hydraulic Tool	5.00			3412.00	
Jars	6.00			3418.00	
Safety Joint	2.00			3420.00	
Packer	5.00			3425.00	28.00 Bottom Of Top Packer
Packer	5.00			3430.00	
Anchor	19.00			3449.00	
Recorder	1.00	8524	Inside	3450.00	
Recorder	1.00	6839	Outside	3451.00	
Bull Plug	3.00			3454.00	24.00 Bottom Packers & Anchor
Total Tool Length:	52.00				



DRILL STEM TEST REPORT

FLUID SUMMARY

Hartman Oil Co.

19-05s-22w-Norton

10500 E Berkeley SQ Pkw y
STE 100 Wichita Kansas 67206

Brooks 1-19

Job Ticket: 17549

DST#: 2

ATTN: Derek Patterson

Test Start: 2013.08.24 @ 04:51:00

Mud and Cushion Information

Mud Type: Gel Chem

Cushion Type:

Oil API:

deg API

Mud Weight: 9.00 lb/gal

Cushion Length: ft

Water Salinity: ppm

Viscosity: 54.00 sec/qt

Cushion Volume: bbl

Water Loss: 63.98 in³

Gas Cushion Type:

Resistivity: ohm.m

Gas Cushion Pressure: psia

Salinity: 600.00 ppm

Filter Cake: 1.00 inches

Recovery Information

Recovery Table

Length ft	Description	Volume bbl
66.00	Oil cut mud 10% Oil 90%Mud	0.325

Total Length: 66.00 ft Total Volume: 0.325 bbl

Num Fluid Samples: 0

Num Gas Bombs: 0

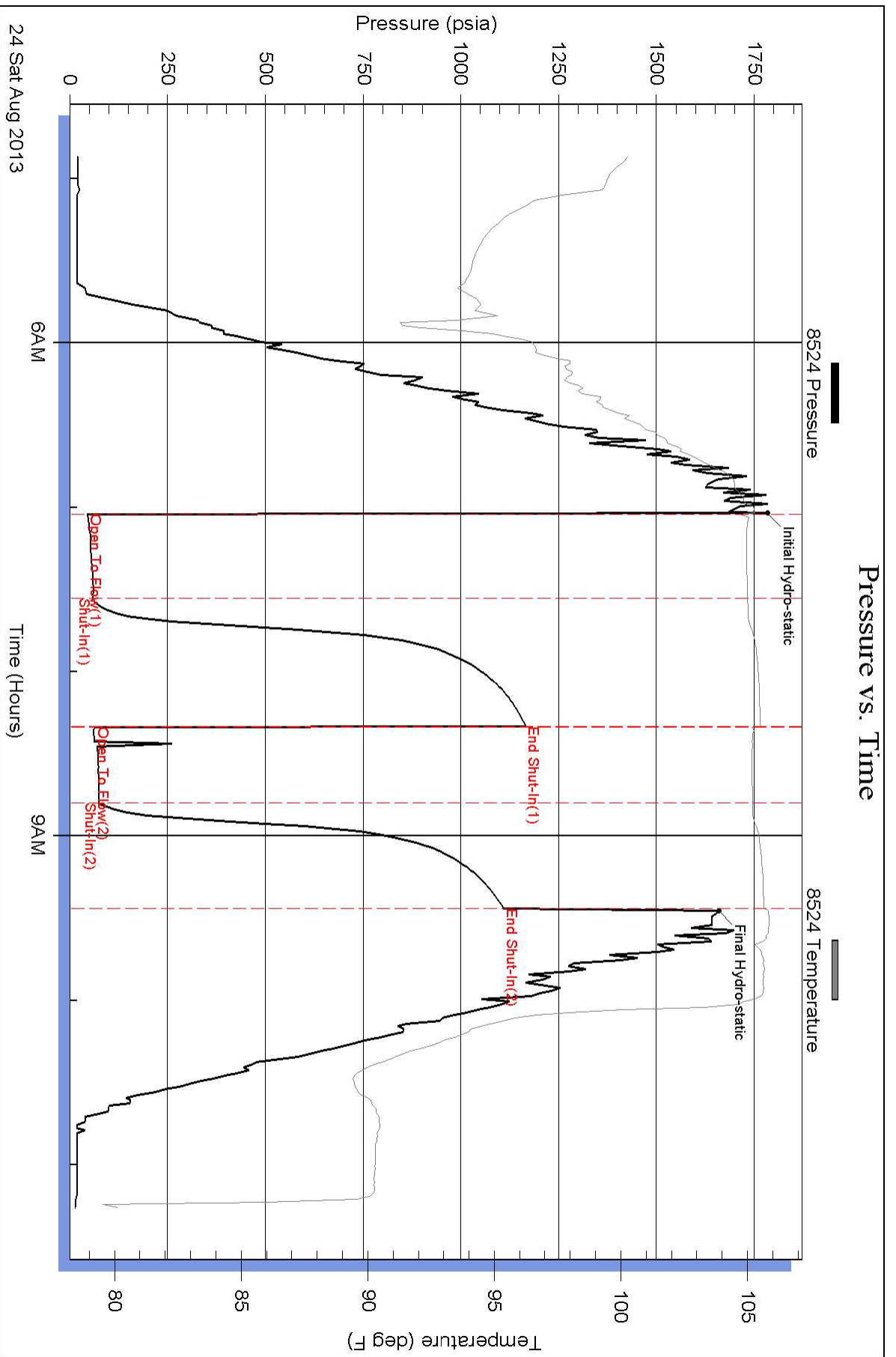
Serial #:

Laboratory Name:

Laboratory Location:

Recovery Comments:

Pressure vs. Time



Pressure vs. Time

