



**TRILOBITE TESTING, INC.**

# DRILL STEM TEST REPORT

Russell Oil, Inc  
 PO Box 8050  
 Edmund, OK. 73083  
 ATTN: Kitt Noah

**5-10s-12w-Osborne**  
**Brown A #1-5**  
 Job Ticket: 50428 **DST#: 1**  
 Test Start: 2013.06.07 @ 04:21:20

## GENERAL INFORMATION:

Formation: **Lansing A**  
 Deviated: No Whipstock: 0.00 ft (KB)  
 Time Tool Opened: 07:21:05  
 Time Test Ended: 11:20:50  
 Interval: **3036.00 ft (KB) To 3078.00 ft (KB) (TVD)**  
 Total Depth: 3078.00 ft (KB) (TVD)  
 Hole Diameter: 7.80 inches Hole Condition: Good  
 Test Type: Conventional Bottom Hole (Initial)  
 Tester: Jason McLemore  
 Unit No: 54  
 Reference Elevations: 1819.00 ft (KB)  
 1812.00 ft (CF)  
 KB to GR/CF: 7.00 ft

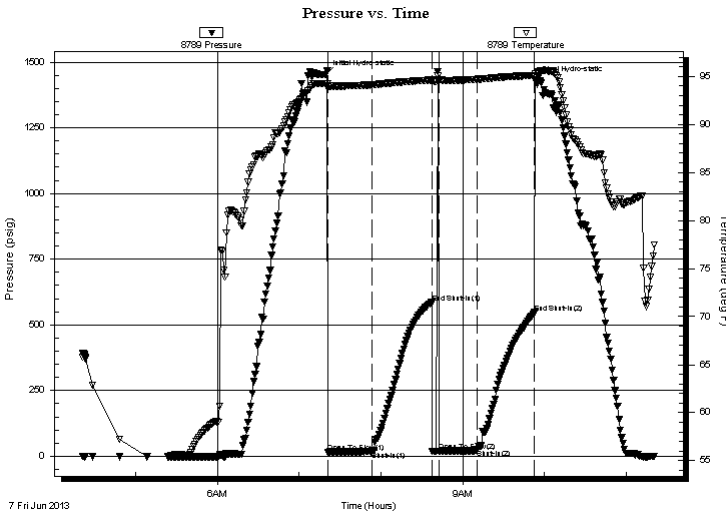
## Serial #: 8789

Inside

Press @ RunDepth: 24.94 psig @ 3072.00 ft (KB) Capacity: 8000.00 psig  
 Start Date: 2013.06.07 End Date: 2013.06.07 Last Calib.: 2013.06.07  
 Start Time: 04:21:22 End Time: 11:20:50 Time On Btm: 2013.06.07 @ 07:19:35  
 Time Off Btm: 2013.06.07 @ 09:53:20

TEST COMMENT: IFP-Intermittant Surface Blow , Died in 20 Min.  
 ISI-Dead  
 FFP-Dead, FLush Tool, Died in 3 Min.  
 FSI-Dead

## PRESSURE SUMMARY



Time (Min.)	Pressure (psig)	Temp (deg F)	Annotation
0	1451.73	94.24	Initial Hydro-static
2	16.18	93.73	Open To Flow (1)
34	17.65	94.12	Shut-In(1)
78	585.20	94.62	End Shut-In(1)
83	19.84	94.52	Open To Flow (2)
111	24.94	94.69	Shut-In(2)
153	546.48	95.12	End Shut-In(2)
154	1429.29	95.32	Final Hydro-static

## Recovery

Length (ft)	Description	Volume (bbl)
8.00	Drilling Mud W/ Oil Scum	0.11

## Gas Rates

Choke (inches)	Pressure (psig)	Gas Rate (Mcf/d)



**TRILOBITE  
TESTING, INC.**

# DRILL STEM TEST REPORT

## FLUID SUMMARY

Russell Oil, Inc  
PO Box 8050  
Edmund, OK. 73083  
ATTN: Kitt Noah

**5-10s-12w-Osborne**  
**Brown A #1-5**  
Job Ticket: 50428      **DST#: 1**  
Test Start: 2013.06.07 @ 04:21:20

### Mud and Cushion Information

Mud Type: Gel Chem	Cushion Type:	Oil API:	deg API
Mud Weight: 9.00 lb/gal	Cushion Length: ft	Water Salinity:	ppm
Viscosity: 55.00 sec/qt	Cushion Volume: bbl		
Water Loss: 7.20 in <sup>3</sup>	Gas Cushion Type:		
Resistivity: ohm.m	Gas Cushion Pressure: psig		
Salinity: 3800.00 ppm			
Filter Cake: inches			

### Recovery Information

Recovery Table

Length ft	Description	Volume bbl
8.00	Drilling Mud W/ Oil Scum	0.112

Total Length: 8.00 ft      Total Volume: 0.112 bbl

Num Fluid Samples: 0      Num Gas Bombs: 0      Serial #:

Laboratory Name:      Laboratory Location:

Recovery Comments:

# Pressure vs. Time

