



TRILOBITE TESTING, INC.

DRILL STEM TEST REPORT

Russell Oil, Inc
 PO Box 8050
 Edmund, OK. 73083
 ATTN: Kitt Noah

5-10s-12w-Osborne
Brown A #1-5
 Job Ticket: 50429 **DST#: 2**
 Test Start: 2013.06.07 @ 19:40:08

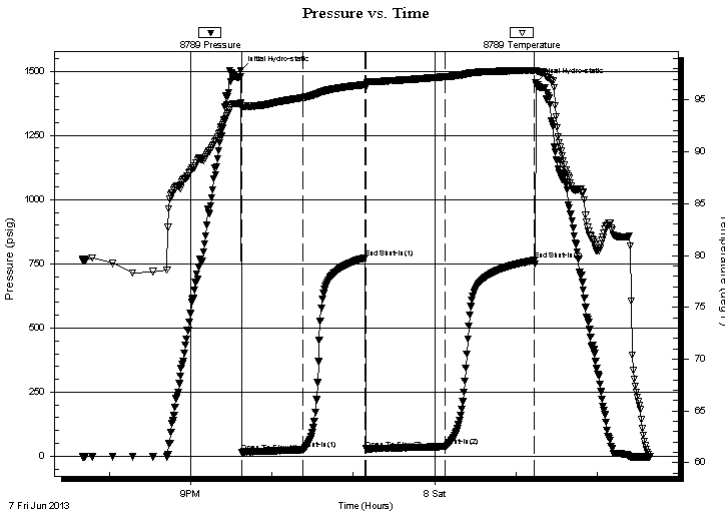
GENERAL INFORMATION:

Formation: **LKC- C**
 Deviated: No Whipstock: 0.00 ft (KB)
 Time Tool Opened: 21:37:38
 Time Test Ended: 02:38:53
 Interval: **3102.00 ft (KB) To 3116.00 ft (KB) (TVD)**
 Total Depth: 3116.00 ft (KB) (TVD)
 Hole Diameter: 7.80 inches Hole Condition: Good
 Test Type: Conventional Bottom Hole (Reset)
 Tester: Jason McLemore
 Unit No: 54
 Reference Elevations: 1819.00 ft (KB)
 1812.00 ft (CF)
 KB to GR/CF: 7.00 ft

Serial #: 8789 **Inside**
 Press @ Run Depth: 37.97 psig @ 3105.00 ft (KB) Capacity: 8000.00 psig
 Start Date: 2013.06.07 End Date: 2013.06.08 Last Calib.: 2013.06.08
 Start Time: 19:40:10 End Time: 02:38:53 Time On Btm: 2013.06.07 @ 21:36:53
 Time Off Btm: 2013.06.08 @ 01:14:38

TEST COMMENT: IFP-Weak Blow , Built to 3-1/4"
 ISI-Dead
 FFP-Weak Blow , Built to 2-1/2"
 FSI-Dead

PRESSURE SUMMARY



Time (Min.)	Pressure (psig)	Temp (deg F)	Annotation
0	1502.30	94.71	Initial Hydro-static
1	15.37	94.22	Open To Flow (1)
46	25.98	95.22	Shut-In(1)
92	773.30	96.48	End Shut-In(1)
93	28.59	96.22	Open To Flow (2)
151	37.97	97.24	Shut-In(2)
217	763.28	97.85	End Shut-In(2)
218	1456.18	97.86	Final Hydro-static

Recovery

Length (ft)	Description	Volume (bbl)
2.00	Free Oil	0.03
48.00	Watery Mud-40%W-60%M	0.67

* Recovery from multiple tests

Gas Rates

Choke (inches)	Pressure (psig)	Gas Rate (Mcf/d)



**TRILOBITE
TESTING, INC.**

DRILL STEM TEST REPORT

FLUID SUMMARY

Russell Oil, Inc
PO Box 8050
Edmund, OK. 73083
ATTN: Kitt Noah

5-10s-12w-Osborne
Brown A #1-5
Job Ticket: 50429 **DST#: 2**
Test Start: 2013.06.07 @ 19:40:08

Mud and Cushion Information

Mud Type: Gel Chem	Cushion Type:	Oil API:	deg API
Mud Weight: 9.00 lb/gal	Cushion Length: ft	Water Salinity:	41000 ppm
Viscosity: 55.00 sec/qt	Cushion Volume: bbl		
Water Loss: 7.19 in ³	Gas Cushion Type:		
Resistivity: ohm.m	Gas Cushion Pressure: psig		
Salinity: 3800.00 ppm			
Filter Cake: inches			

Recovery Information

Recovery Table

Length ft	Description	Volume bbl
2.00	Free Oil	0.028
48.00	Watery Mud-40%W-60%M	0.673

Total Length: 50.00 ft Total Volume: 0.701 bbl
 Num Fluid Samples: 0 Num Gas Bombs: 0 Serial #:
 Laboratory Name: Laboratory Location:
 Recovery Comments:

